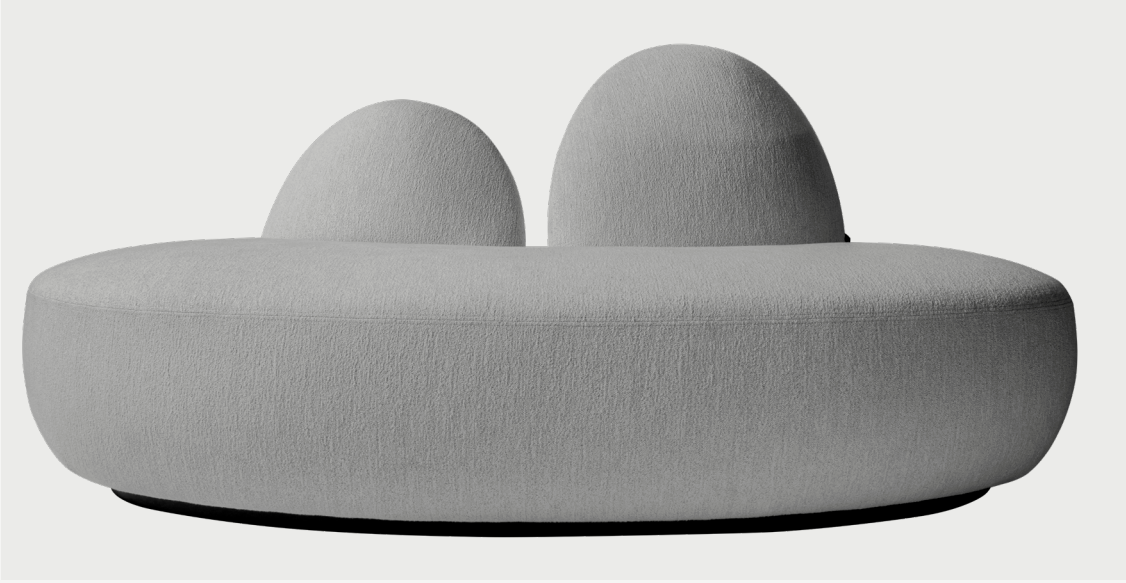


*live letter*

## COLLECTION of FUYU



**Designer** Ufuk CEYLAN

## FUYU SEATING UNITS

The specially designed FUYU SOFA, which you will be impressed by its unusual form and comfort, brings all its elegance to your living space... With its unique design, FUYU SOFA brings together the wide seating and naturalness that you cannot find in other single sofas.

Teşvikiye Mahallesi,  
Güzelbahçe sokak, No:1A  
Nişantaşı, Şişli / İSTANBUL

lagu.shop  
info@lagu.com.tr

+90 850 305 52 48  
+90 533 498 52 48

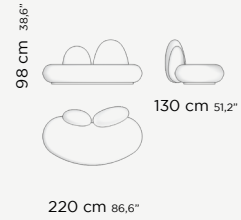


**FUYU DOUBLE SOFA**



**DIMENSIONS**

H: 98 cm / 38,6 inc  
 D: 130 cm / 51,2 inc  
 W: 220 cm / 86,6 inc

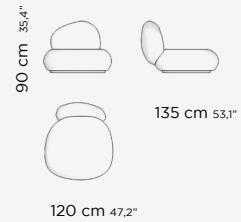


**FUYU SINGLE**



**DIMENSIONS**

H: 90 cm / 35,4 inc  
 D: 135 cm / 53,1 inc  
 W: 120 cm / 47,2 inc



**USER GUIDE**

**USER GUIDE OF UPHOLSTERED FURNITURE**

When your upholstery is made up of fine fabrics, leather or leatherette, remember that direct sunlight will destroy your upholstery with prolonged exposure. The ultraviolet rays in sunlight work to deteriorate the condition and lifetime of your upholstery. A little exposure to the sun every now and then is harmless, but do keep your favourite upholstered furniture out of harm's way by drawing the blinds or placing them out of areas that receive direct sunlight. The longer you avoid vacuuming your upholstery, the worse the damage. Dust settles on everything in your home, your upholstery included. Whenever you sit on your sofas and chairs, the weight forces the dust down deeper into the fibers of the upholstery. With prolonged periods of no maintenance, the dust acts like an abrasive, cutting, and scraping your upholstery on a microscopic level, thus causing the material to wear out a lot faster. You should regularly flip your upholstered cushions (both the seat and the back cushions) depending on the frequency of their use. You will find that your upholstery will wear out evenly and your cushions will maintain their shape for longer.

**USER GUIDE OF LEATHER**

For everyday cleaning, simply wipe the surface with a clean, dry, non-abrasive, preferably white cloth. Dry dirt can be easily removed with the use of a soft bristle brush. You can also use a medium power vacuum cleaner with a suitable attachment, and avoid rubbing the surface with it. Any stains caused from water soluble substances (soft drinks, coffee, tea, milk, chocolate, oil, grease, make-up) should be removed quickly by gently dabbing the surface with a dry cloth or paper towel. Do not use a hairdryer and avoid exposing to direct sunlight.

**CAUTION**

Do not place leather furniture or sofas near any source of heat such as fireplaces, stoves or radiators. The minimum distance must be 50cm. The upholstery will maintain its original colour by avoiding placing the sofa in direct sunlight or near artificial light sources, especially halogen lights. In fact both artificial light and sunlight can permanently damage leather upholstery, as can unsuitable detergents. Natural leather upholstery makes each sofa a unique piece because every hide is one of a kind. Specific Nabuk cleaner and care kit, including specific products and accessories is available upon request.

## LEATHER

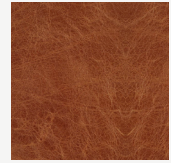
BLACK  
LEATHER



BROWN  
LEATHER



TABA  
LEATHER



BEIGE  
LEATHER



GREEN  
LEATHER

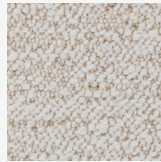


## FABRIC

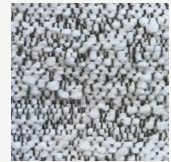
HERMES 01



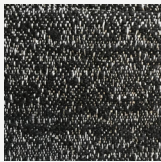
HERMES 02



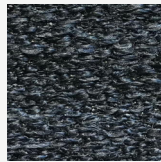
HERMES 04



HERMES 13



BLACK  
CANDLEWICK



WHITE  
CANDLEWICK



MUSTARD  
CANDLEWICK



KENZO BLUE



KENZO BROWN



KENZO PINK



LORD 04



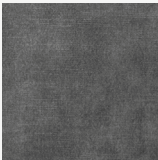
LORD 24



## STRUCTURE FINISHES

**STRUCTURE FINISHES**

**LORD 26**



**LORD 29**



**LORD 34**



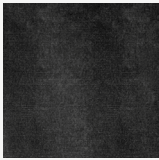
**LORD 38**



**LORD 49**



**LORD 76**



**LORD 84**



Materials can be changed according to project or material supply.