

Joto Cap & Flat Press Manual

Model No.: E-HP-JCH-51

OPERATOR'S MANUAL



JOTOTM
Bringing images to lifeTM

Safety Instructions

For Use By Qualified Personnel Only

When using your Heat Press, basic precautions should always be followed, including the following:

Read all instructions.

Use heat press only for its intended use.

Always keep the heat press dry. Do not get the heat press wet to reduce the risk of electric shock. Do not store heat press in a wet/ damp area.

Never pull cord to disconnect the power. Instead, grasp plug and pull to disconnect from power outlet.

Make sure you protect the power cord by keeping it away from hot surfaces. Avoid placing objects on top of the cord. This could cause damage to the cord and could be a fire hazard risk.

Do not operate heat press with a damaged cord or if the equipment has been damaged. To prevent risks of injury, please do not disassemble or attempt to repair the heat press by yourself if you are not qualified to do so. Instead, call or take it to a qualified service person for examination and repair. Incorrect assembly or repair could increase the risk of fire, electric shock, or injury to persons when the equipment is used.

If heat press being used by or near children, please make sure that it is supervised. Do not leave equipment unattended while connected.

Metal parts on the press can become hot. Avoid touching the hot metal parts to prevent burns. Proceed with caution when using the heat press.

To reduce the likelihood of circuit overload, Joto recommends to use a dedicated circuit if possible.

Make sure that the cord is safely secured so it cannot be pulled or tripped over.

If you need to use an extension cord, make sure you use a 20 amperage rated cord. Cords rated below 20 amperage can overheat. Make sure that the extension cord is safely secured so it cannot be pulled or tripped over.

Note: This heat press should not be set to exceed 400°F (200°C). Setting the press temperature to above 400°F (200°C) may cause a fire hazard.

Be careful of the Auto Release feature. Press handle can injure body parts when autoreleasing. Stand clear of auto-release path.



PLEASE KEEP THE BOX THAT YOUR HEAT PRESS ARRIVED IN, ALONG WITH ALL ORIGINAL PACKAGING.

Congratulations on your purchase of a Joto 5 in 1 Cap & Flat Press! In order to work professionally with the machine and start production, please make sure you read this manual carefully. Reproduction of this manual requires written consent from Joto. Errors and amendments of technical details excepted, all rights reserved. Joto is not liable for any direct or indirect damages caused by the use of this product.

Table of Contents

Safety.....	2
Introduction	3
Flat and Cap Press Overview	4-5
Machine Parts Diagram	6
Platten Overview	7
Setting Up Your Heat Press	8
Operating Instructions	9
Replacing Elements	10
Maintenance	11
Heat Pressing Guide	12
Expanded View	-13
Circuit Diagram.....	14
Warranty.....	15
Contact	16

Cap & Flat Press Overview



Technical Specs

Model No.:	E-HP-JCH-51
Machine Type:	Flat & Cap
Machine Size:	20.70" x 19.68" x 9.84" (526mm x 500mm x 250mm)
Printable Area Size:	3.14" x 5.11" x 0.39" (80mm x 130mm x 10mm)
Controller	GY-04 Digital Controller
Voltage:	220v/ 1 Phase/ 120v/ 1 Phase
Power:	0.6kw
Time Range:	0~999s
Maximum Temp:	437°F (225°C)
Packing Size:	24.40" x 23.62" x 13.77" (620mm x 600mm x 350mm)
Gross Weight:	55.11lbs (25kg)

Note: This heat press should not be set to exceed 400°F (200°C). Setting the press temperature to above 400°F (200°C) may cause a fire hazard.

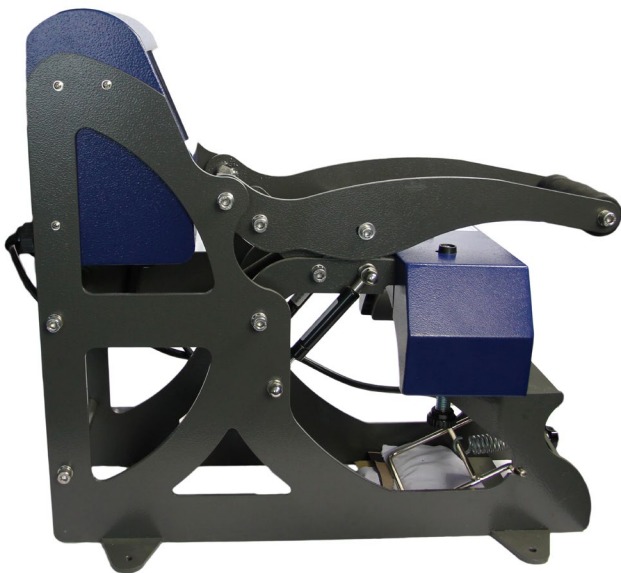
Cap & Flat Press Overview



TOP VIEW



FRONT VIEW

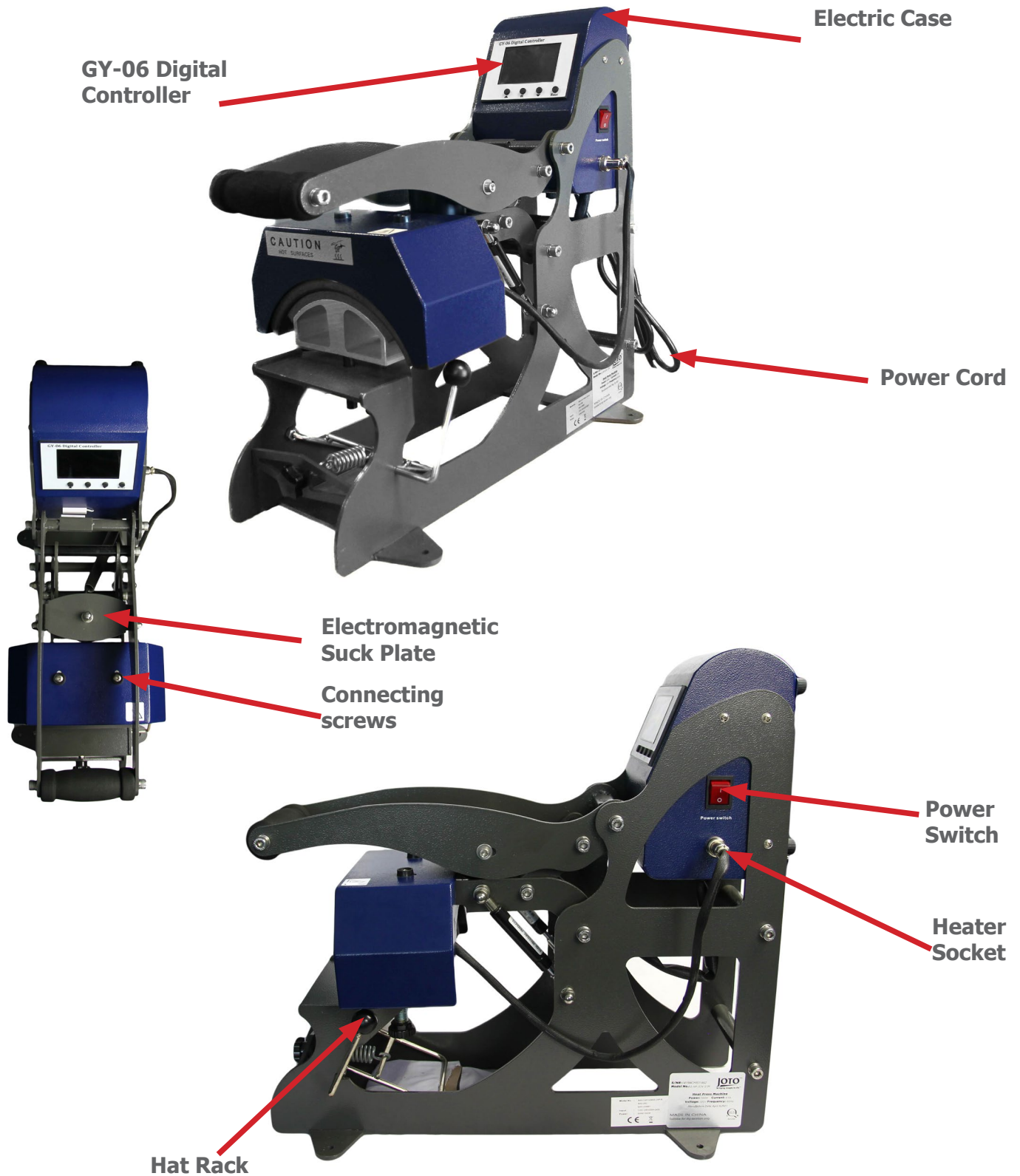


LEFT VIEW



RIGHT VIEW

Machine Parts Diagram



Platen Overview

Top Flat Heat Platen
5.9"x 5.9"
15 x 15cm



Bottom Flat Heat Platen
5.9"x 5.9"
15 x 15cm



Curvy Heat Platen Bottom
4.01" x 6.35"
102*161.5mm

Curvy Heat Platen Bottom
3.93" x 5.43"
100*138mm

Curvy Heat Platen Bottom
2.83" x 5.43"
72*138mm

Curvy Heat Platen Bottom
3.07" x 4.92"
78*125mm

Setting Up Your Cap & Flat Press

Turning On Your Mug Press

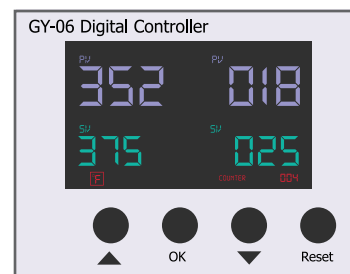
Turn the Main Power Switch ON. The Main Power Switch is at the right side of the heat press.

Current temperature, set temperature, current time, set time will display.



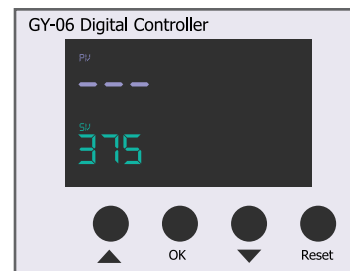
How to Read The Display

- 1.) Left side PV value = Current Temperature
- 2.) Right side PV value = Current Time
- 3.) Left side SV value = Set Press Temperature
- 4.) Right side SV value = Set Press Time



Setting Press Temperature

- 1.) Press OK to start. Use the up and down arrows to choose to display in °F or °C. °F stands for Fahrenheit °C stands for Celsius
- 2.) Once selection is made, press OK to save.
- 3.) Green set temperature value will flash. Use the up and down arrows to set press temperature value. Press OK to save.



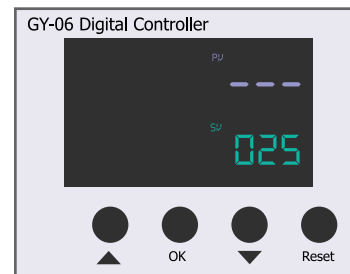
Note: Setting the press temperature to above 400°F (200°C) may cause a fire hazard.

Setting Press Time

Green Set Time Value will flash
Use the up and down arrows to change the value.

Press OK to save the value.

Wait until the current temperature is the same as the set temperature before using. The press will beep once set temperature is reached. Close and open the press to stop the beeping.



Operating Instructions

Pressing a cap

- 1.) Turn ON the Power Switch.
- 2.) Set the appropriate Press Temperature, and Time.
- 3.) Tape your imaged transfer/sublimation paper to your cap/substrate with heat tape.
- 4.) Set the pressure. To do this, place a blank cap/substrate into the cap press. Adjust the pressure knob at the bottom of the press until the cap fits snugly when press is closed.

It is recommended that you use medium-high pressure for transfer papers and transfer vinyls.

For sublimation, light pressure is required. Turn pressure knob counter-clockwise to raise the base plate (to increase pressure or turn the knob clockwise to lower the base plate (to decrease pressure).

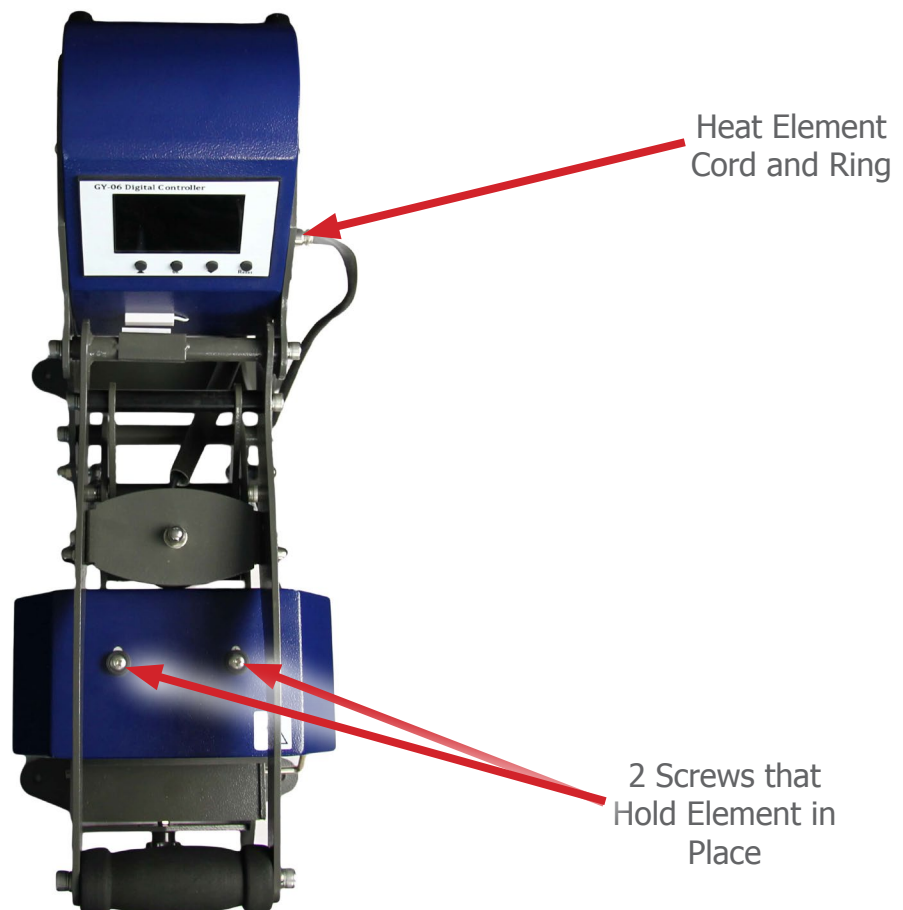
- 5.) Wait until cap press reaches the set temperature. Once the press is at temperature, place cap/substrate into the press. Close the press.
- 6.) Timer will start counting down. The press will beep when the set time has counted down to 3. The auto-release function will activate once timer reaches zero.
- 7.) Peel paper immediately or as suggested by the product instructions.

Note: Do not obstruct the heat press when auto release function is active. Auto release will be automatically activated after counter reaches zero. Beware of moving parts.

Replacing Platen Element

Replacing your Heat Element

- 1.) Ensure the power switch is OFF.
- 2.) Unplug the heat press if it is still plugged in.
- 3.) Detach the platen element cord from the mug press. Unscrew the ring that holds the cord in place before detaching. See below diagram for detailed instructions
- 4.) With the Heat Press open, unscrew the two screws that hold the heat element in place.
- 5.) Gently remove the heat element out of the flat and cap heat press. Please be careful not to damage the cord or the mug press.
- 6.) Gently install the new heat element into the flat and cap heat press.
- 7.) Re-screw the two screws to keep the heat element in place.
- 8.) Connect the new heat element cord to the heat press.
Ensure that the pattern on the cord matches the socket on the heat press.



Maintenance

General Maintenance

Please switch off the machine and unplug the power cord when the machine is not in use.

To protect the heat platen, do not allow any hard surface objects to be in direct contact with the platen. This includes zippers, buttons, metal sublimation items. When pressing these items, place a protective sheet between the platen and the objects.

Please add the lubrication oil regularly on the joints. to prolong the life of your heat press. The frequency will depend on how often you use your machine.

The cooling fan will automatically start when the temperature of heat platen reaches 80°C (176°F). This helps to cool electrical parts and prolong the heat press.

The heat platen will cool down to room temperature if heat press is not used for more than 30 minutes.

Note: This heat press should not be set to exceed 400°F (200°C) Setting the press temperature to above 400°F (200°C) may cause a fire hazard.



If your mug press stops working, please contact Joto at 1-800-565-5686 so we can help you troubleshoot.

Heat Pressing Guide

Transfer Vinyls

MultiCut One-4-All

Temperature: 265°F
Time: 3-5 seconds
Peel: Warm (Cotton)



MultiCut Premium

Temperature: 310-330°F
Time: 45 seconds
Peel: Warm/Cool



MultiCut New Flock

Temperature: 310-330°F
Time: 15 seconds
Peel: Warm



MultiCut Lustre

Temperature: 310-330°F
Time: 15-20 seconds
Peel: Hot to Cold



MultiCut Nylon

Temperature: 300-305°F
1st Press Time: 3-4 seconds
2nd Press Time: 10-15 seconds



MultiCut Style

Temperature: 310-330°F
Time: 15-20 seconds
Peel: Hot to Cold



For more instructions, please visit our website at www.jotoimagingsupplies.com/support/how-to-library/instructions.html

Transfer Papers

CL TrimFree Dark

(REQUIRE A WHITE TONER PRINTER)
Temperature: 310°F
1st Press Time: 120 seconds
2nd Press Time: 30 seconds



CL TrimFree Light

Temperature: 330°F
Time: 30 seconds
Peel: Warm (5-10 seconds)



Inkjet Light

Temperature: 350-365°F
Time: 20 seconds
Peel: Warm



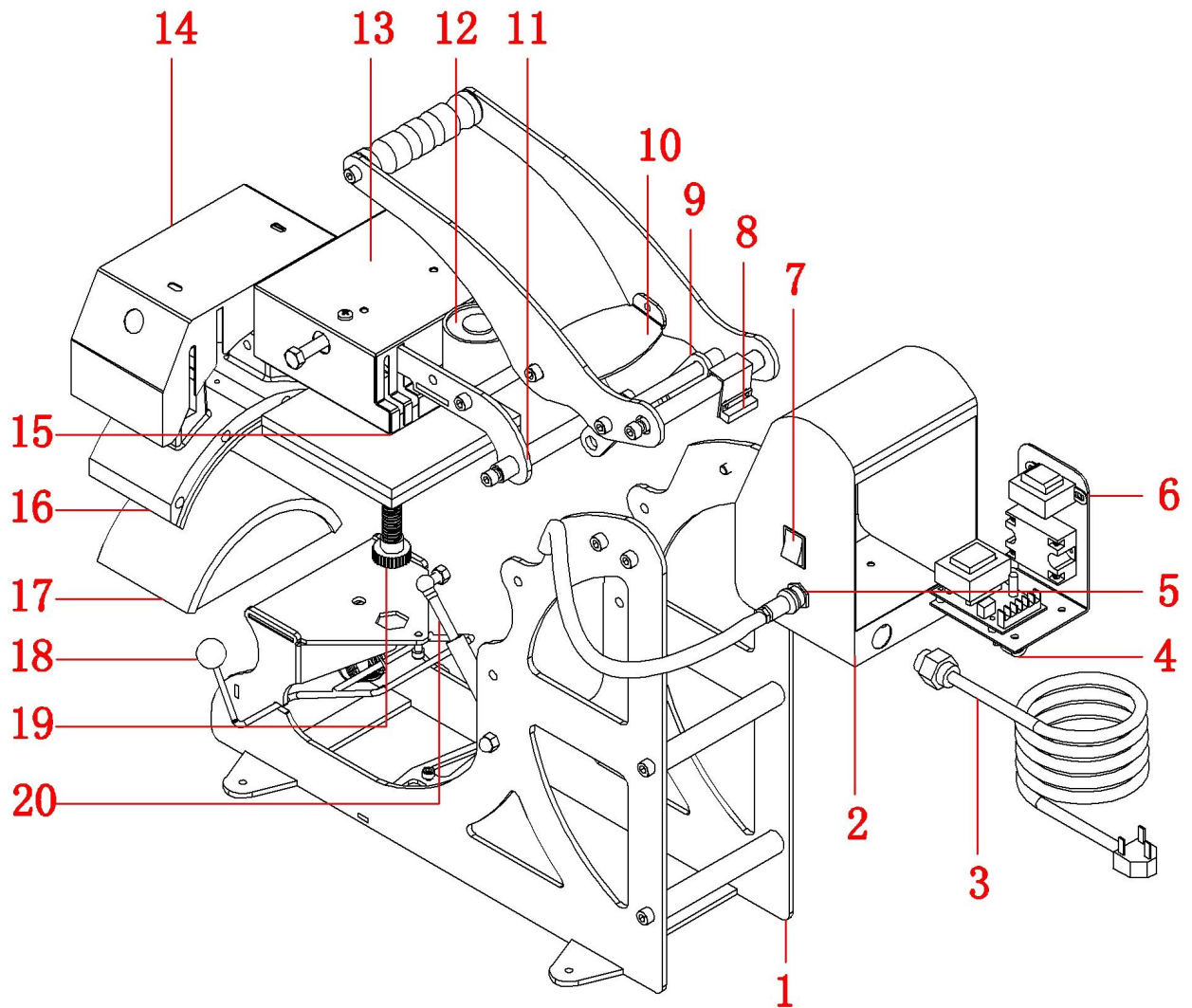
Inkjet Dark

Temperature: 375°F
Time: 20-25 seconds
Peel: Cool



For more instructions, please visit our website at www.jotoimagingsupplies.com/support/how-to-library/instructions.html

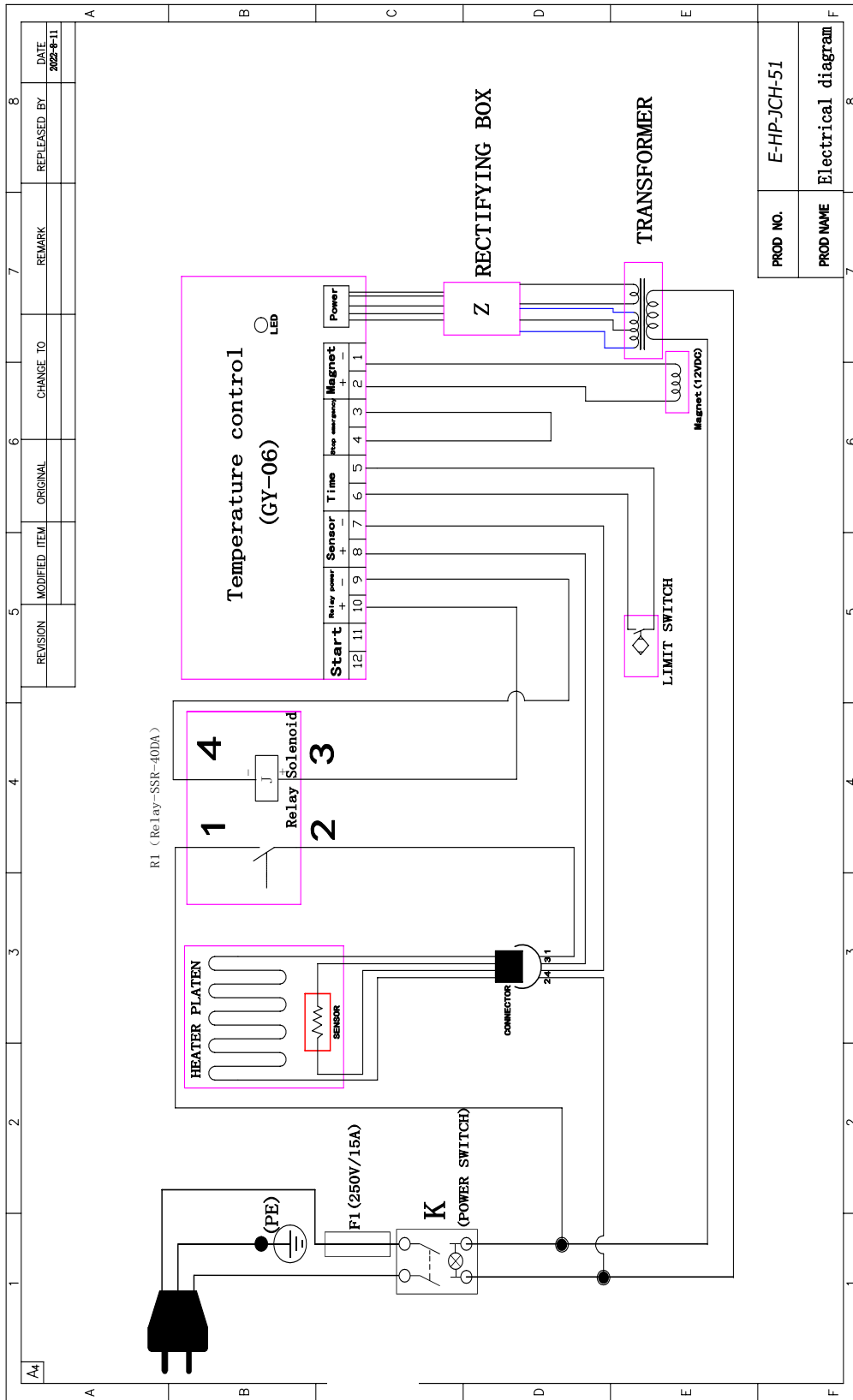
Expanded Diagram



Serial No.	Part Name	Qty
1	Machine Frame	1
2	Electric Case	1
3	Power Cord	1
4	Fuse Holder	1
5	Heating Plate Socket	1
6	Electrical Parts Bracket	1
7	Power Switch	1
8	Limit Switch	1
9	Connecting Piece	2
10	Electromagnet Suck Plate	1

Serial No.	Part Name	Qty
11	Davit Arm	1
12	Electromagnet	1
13	Flat Heat Platen Cover	1
14	Cap Heater Cover	1
15	Flat Heat Platen	1
16	Cap Heater	1
17	Electromagnet	1
18	Hat Rack	1
19	Pressure Adjust Gear	1
20	Gas Spring	1

Circuit Diagram



PROD NO.	E-HP-JCH-51
PROD NAME	Electrical diagram

Warranty Statement

JOTO warrants to the original purchaser JOTO's E-HP-JCH-51M heat press or component that such heat press or component is free from defects in materials and workmanship, subject to the limitations set forth below.

IN LIEU OF ALL WARRANTIES, EITHER EXPRESS OR IMPLIED, INCLUDING WITHOUT LIMITATION ANY IMPLIED WARRANTY OF MERCHANTABILITY OR FITNESS FOR A PARTICULAR PURPOSE, WHICH JOTO HEREBY DISCLAIMS, THE OBLIGATIONS OF JOTO UNDER THIS WARRANTY ARE EXPRESSLY LIMITED TO THE FOLLOWING:

- a. JOTO will repair or replace at its option, free of charge, any product, component of its products, and any component it sells separately which is installed in JOTO's heat presses, within twenty four months and sixty months for the heating platen from date of original purchase.
 - b. This warranty does not apply to damage incurred in shipment. Damage incurred in shipment should be reported to the designated carrier. It is the carrier's responsibility to ensure arrival in undamaged condition.
 - c. Service labor, when requested in connection with any of the above items covered by this warranty, will be charged for traveling expenses only.
 - d. This warranty applies only if the product or component proves to be defective under conditions of normal use. It does not apply to breakage or to defects resulting from accident, alteration, misuse, or improper installation.
 - e. This warranty does not include installation of the product or component.
 - f. Prior to any return of a product or component, Buyer must receive written authorization to do so from JOTO. After written authorization, Buyer shall return the defective product or component freight prepaid by the original purchaser and JOTO will ship the replacement or repaired component freight prepaid by JOTO.
 - g. This warranty is effective only if the product or component is installed in a location and manner prescribed by JOTO instructions and only if it is maintained in accordance therewith. This warranty shall become ineffective if the product or component is altered by anyone other than JOTO employees. JOTO neither assumes, nor authorizes any person to assume for it, any obligation or liability other than as specified herein.
- JOTO WILL IN NO CASE AND UNDER NO CIRCUMSTANCES BE LIABLE FOR SPECIAL OR CONSEQUENTIAL DAMAGES, LOSS OF PROFIT OR COMMISSION, OR FOR LOSS OR DELAY IN PRODUCTION.

Without limiting the generality of the foregoing, JOTO will not be liable with respect to furnishing or delay in furnishing any product or component, the use, resale or other disposition thereof, failure to furnish the same, or any other cause. JOTO liability arising out of the supply of any product or component, its use, resale, or other disposition, or out of any guarantee or warranty, express or implied, or any other cause shall in no case exceed the cost to JOTO of the product or component which JOTO has agreed to supply. All liability of JOTO with respect to any product or component shall terminate upon the expiration of the twenty four month period described above.

-Any controversy or claim arising out of or relating to transactions or orders or breach thereof, including breach of warranty, shall be settled by arbitration in Blaine, Washington, pursuant to the rules of American Arbitration Association. Any award made against JOTO shall be limited as provided above. Judgment upon award rendered by arbitration may be entered in any court having jurisdiction thereof. However, at JOTO's option, this paragraph shall not apply to collection by JOTO of the price of any product sold or any action related thereto.



**PLEASE KEEP THE BOX THAT YOUR HEAT PRESS ARRIVED IN,
ALONG WITH ALL ORIGINAL PACKAGING.**

JOTOTM

The logo features the word "JOTO" in a bold, black, serif font. A red swoosh underline is positioned beneath the letters, starting under the 'J' and extending to the right, ending under the 'O'. A small "TM" trademark symbol is located to the upper right of the 'O'.

Bringing images to lifeTM

www.jotoimagingssupplies.com

Tel: 1-800-565-5686

Fax: 1-800-565-5622

Coquitlam, BC | Brampton, ON

Blaine, WA | Las Vegas, NV | Antioch TN