

## Cautions

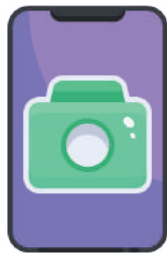
1. Please make sure to refer to the accessories list before assembling the product. Double-check the quantity of accessories and verify if there are any missing parts, damages, or deformations that might affect the installation process. If there are any questions, please contact our customer service team ([service@joybos.com](mailto:service@joybos.com)) with the problem item photo. We will take care of the rest.

2. During the installation process, the screws and screw heads are tightened can make the cabinet more stable.

*Thank you for your trust and support all the time*



## Installation method



Installation steps

Scan the QR code,  
and click on the YouTube link to  
get the installation tutorial video

Please obtain the installation video before installation, follow the installation steps,  
and tighten each fixing screw to make it more stable during use.

# Joybos<sup>®</sup> Metal Storage Cabinet

## Instructions manual

Answers to all installation  
confusion and concerns are right here

Joybos

Make Your Life More Colorful

# Installation Notes:

Check the quantity of accessories before installation



Check the number of parts first and then assemble



The foot mats need to be tapped with tools to make them fully embedded

1. Install the foot plugs at the bottom of the side panel and then install and tighten the foot mats.



The left and right directions of the bottom side panel and the magnetic position are in the same direction

2. Attach and fix the Layer board and bottom Side panel together using screws.



3. Install the Layer boards sequentially with screws.



4. Install the left and right side panel connectors, use tools to tap the connectors to the bottom.



The upper side panel needs to be distinguished from the left and right sides so that the magnetic pieces on the upper and lower side panels are facing the same side.

5. Install the side panels on both sides, distinguish the left and right side panels, align the connectors, and insert them downwards.



6. Install all the layers board in sequence



All screws must be tightened to ensure stability

7. Install the back panel from the back, align the screw holes and screw in the screws



There is a protective film on the front and back of the door panel, which needs to be removed manually

8. Tear off the protective film of the door panel and fix the door panel and door frame with buckles.



9. Install the door panels in sequence and press the spring to make the door panels snap into the track.