

# ZINC [OB E SR]

UNISEX: 62138 WHITE

SIZE: EU 37-48, UK 4-13

OB SR CE UK EN ISO 20347:2022 [OB E SR]

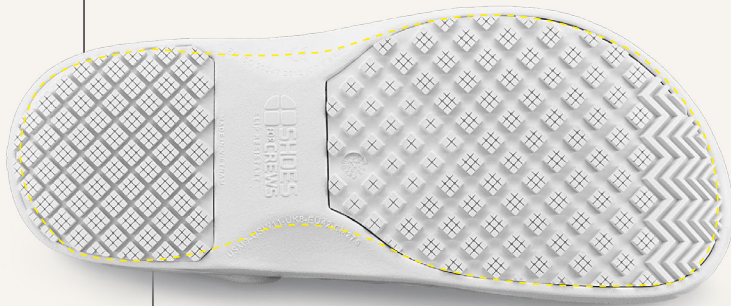
Adjustable strap

Lightweight design

Wide Fit



Energy absorbing heel construction



Different traction patterns across the slip-resistant outsole appropriate for the job, work surface and environment



**WATER RESISTANT** upper to temporarily repel water and keep your feet dry



**Metal free**



**EXTREMELY SLIP-RESISTANT OUTSOLE**

- Exceeds the industry norm SR according to EN ISO 20344:2021 slip resistance test



**TRIPGUARD**

- Allows ease of movement between different surfaces
- Added depth for improved durability and wear time
- Larger surface covered by the outsole provides better slip-resistance



**CLOG-RESISTANT OUTSOLE**

- Traction lugs have wide spacing which won't let dirt and debris get stuck in the outsole

Weight (per shoe):  
272 grams  
(based on size 38)

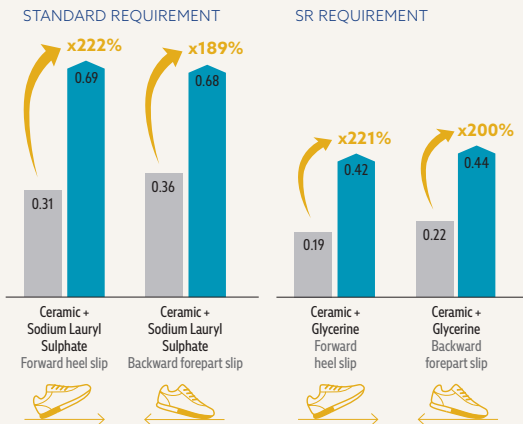
## DATA GUIDE

Certification:	EN ISO 20347:2022 [OB E SR]
Upper Material:	EVA
Lining Material:	EVA
Midssole Material:	EVA
Outsole Material:	Rubber
Safety Toe Cap:	N/A



Click or scan QR code  
To view certificate

## TESTING THE SLIP RESISTANCE OF OUR SFC OUTSOLE [EN ISO 20344:2021]



Slip resistance test according to EN ISO 20344:2021, conducted by Intertek Testing Services Shenzhen Ltd., in August 2022; on a scale of 0.0 (without slip resistance) to 1.0 (very high level of slip resistance, e.g. on dry carpeted floors). All SFC shoes are fitted with the patented, slip-resistant Shoes For Crews outsole. Tested product: Carrig Low 62201.

Also available:



Zinc Black: 66064

