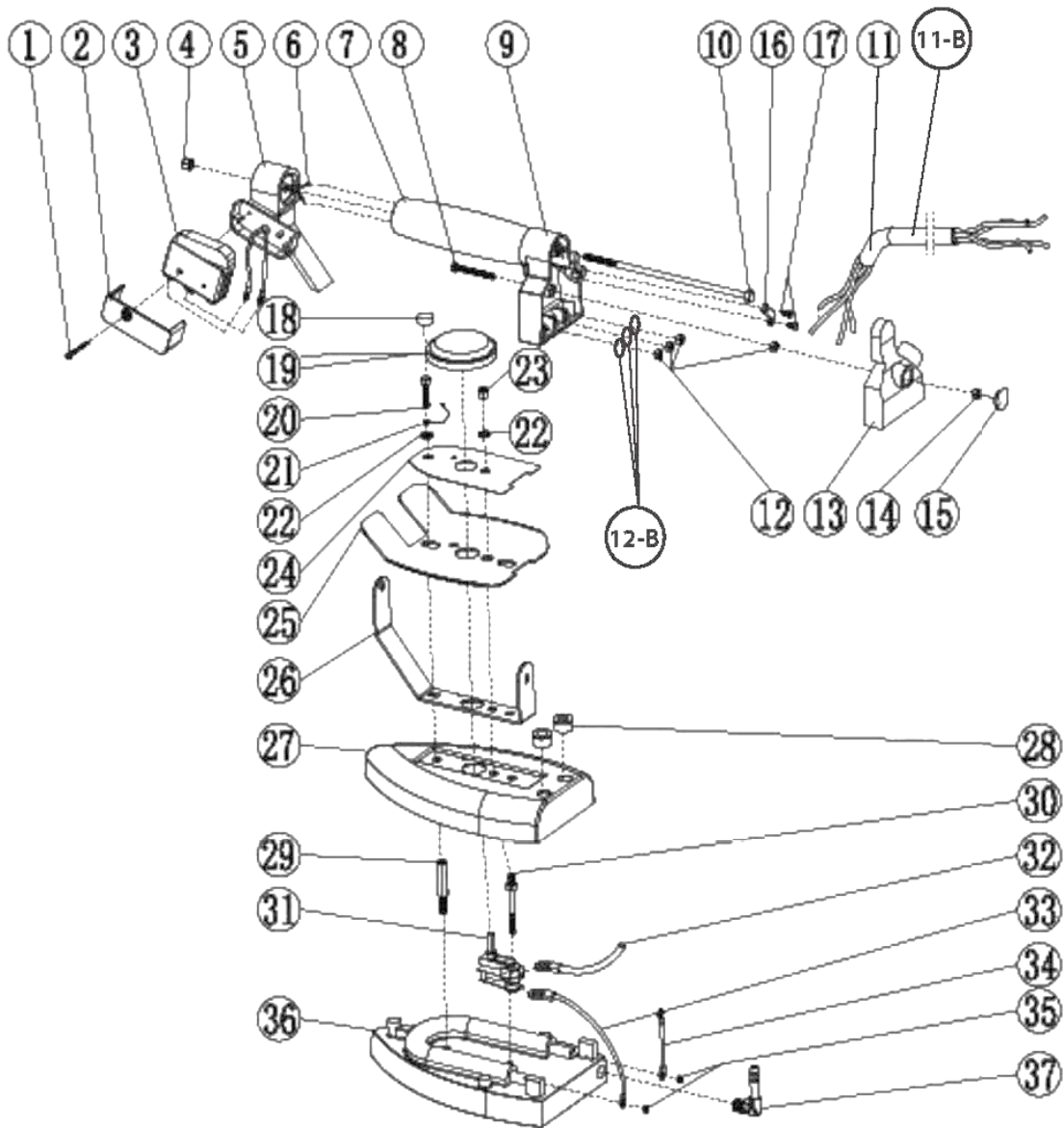


HS Series

– Electric Steam Iron Model No. HS1000 –

Exploded View Model HS100



HÖT-STEAM®

Copyright©2021 Höt-Steam® All rights reserved

HÖT-STEAM • 40 Banfi Plaza North, Unit B, Farmingdale NY 11735 • Tel: (631) 393-2811 • Fax: (888) 276-7617 • www.hot-steam.com

HS Series

– Electric Steam Iron Model No. HS1000 –

Part List Model HS100

Ref#	Item#	Description
1	HS101	Screw for Thumb Switch
2	HS102	Thumb Switch Cover
3	HS103	Microswitch
4	HS104	Front Crown Nut
5	HS105	Front Handle End
6	HS106	Thumb Switch Wire (Set of 2)
7	HS107	Cork Handle
8	HS108	Screw for Rear Cover
9	HS109	Rear Handle End
10	HS110	Long Handle Bolt
11	HS111	4-Wire Power Cord (8ft)
11-B	HS111-B	Power Cord Bushing
12	HS112	Wire Nut (Set of 3)
12-B	HS112-B	Spring Washer (Set of 3)
13	HS113	Rear Cover
14	HS114	Rear Crown Nut
15	HS115	Rear Cover Cap
16	HS116	Stopper
17	HS117	Stopper Screw (Set of 2)
18	HS118	Cover Bolt Cap
19	HS119	Temperature Control Knob
20	HS120	Cover Bolt
21	HS121	Thermostat Knob Spring
22	HS122	Cover Flat Washer
23	HS123	Cover Lock Nut
24	HS124	Name Plate (110V or 220V)
25	HS125	Heat Shield
26	HS126	Handle Bracket
27	HS127	Metal Cover
28	HS128	Metal Cover Bushing
29	HS129	Tapped and Threaded Bolt
30	HS130	Thermostat Mounting Screw
31	HS131	Thermostat with Thermal Fuse
32	HS132	Thermostat Lead Wire Short
33	HS133	Lead Wire to Thermostat (Left)
34	HS134	Lead Wire to Heating Element (Right)
35	HS135	Lead Wire Nut
36	HS136	Iron Sole Plate (110V or 220V)
37	HS137	Hose Fitting

[Additional Parts]

Ref#	Item#	Description
-	SP3	Steam Regulator (110V or 220V)
-	4PP	Male Plug for Power Cord
-	BSH10	10ft Black Silicon Hose
-	IR1	Metal Silicon Iron Rest
-	IRS1000	Iron Shoe