

JMP INSTRUCTIONALS:

HOW TO INSTALL A POST TO POST RAKE RAIL



JMPWOOD.COM

KING OF STAIR PARTS

T: 908.777.1567

E: Team@jmpwood.com

SUPPLIES: CLICK EACH ITEM TO ADD TO CART



ZIPBOLT SLIPFIX RAILBOLT
11.550



ZIPBOLT SLIPFIX RAILBOLT
13.900 / 19.950



ZIPBOLT SIDE RATCHET TOOL
40.310



G-FORCE ALUMINUM ALLOY
RAFTER SQUARE



TITEBOND II PREMIUM INTERIOR &
EXTERIOR WOOD GLUE



ZIPBOLT RAILBOLT DRILL GUIDE
40.260

Click Or Scan Me



"COME GET YA
STAIR PARTS!"

Add All Items To Cart



IRWIN SPEEDBOR 3/8" &
1/4" SPADE DRILL BIT



DIABLO 1" FORSTNER DRILL BIT



JMP INSTRUCTIONALS:

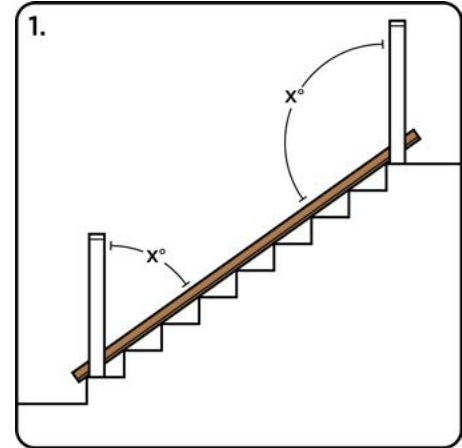
HOW TO INSTALL A POST TO POST RAKE RAIL

1

MEASURE ANGLES OF POST TO RAKE:

SET THE RAIL ALONG THE RAKE OF THE STAIRS.

MEASURE THE INSIDE ANGLES OF THE POSTS IN RELATION TO THE RAIL.

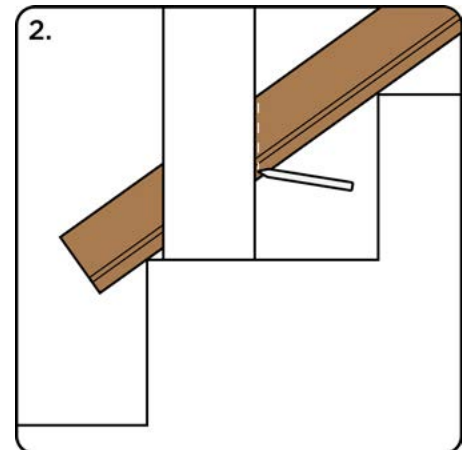


2

MARK THE RAIL:

WHILE THE RAIL IS ALIGNED WITH THE RAKE, MARK THE INSIDE OF THE POST WITH A SCRIBE.

DO THE SAME TO THE OTHER SIDE.

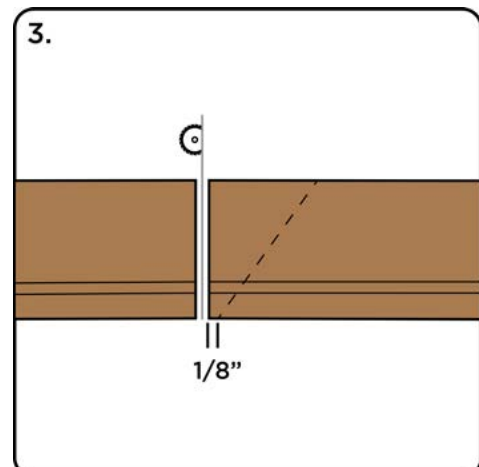


3

CUT THE RAIL:

CUT THE RAIL 1/8" PAST THE MARKED LINE AT 90° PERPENDICULAR TO THE RAIL.

REPEAT THIS STEP TO THE OTHER END OF THE RAIL.



JMP INSTRUCTIONALS:

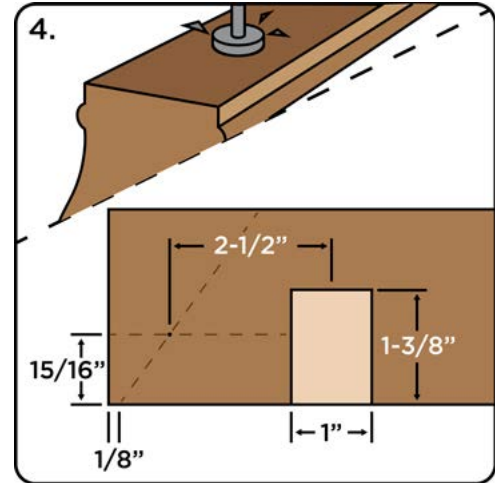
HOW TO INSTALL A POST TO POST RAKE RAIL

4

MEASURE AND DRILL A 1" HOLE:

FOLLOW THE GRAPHIC.

MEASURE 2-1/2" FROM THE INTERSECTING POINT AND DRILL A 1" HOLE 1-3/8" DEEP INTO THE UNDERSIDE OF THE RAIL ON CENTER.

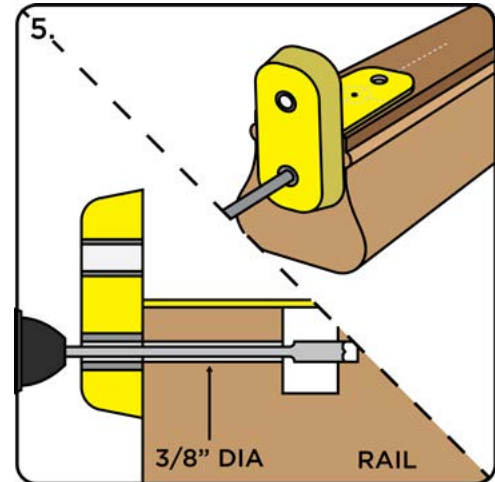


5

DRILL A 3/8" USING THE DRILL GUIDE:

FLIP RAIL AND ALIGN THE [RAILBOLT DRILL GUIDE](#) WITH THE CENTER OF THE RAIL.

WITH THE 3/8" SIDE DOWN, DRILL A HOLE USING THE [3/8" SPEEDBOR SPADE BIT](#).

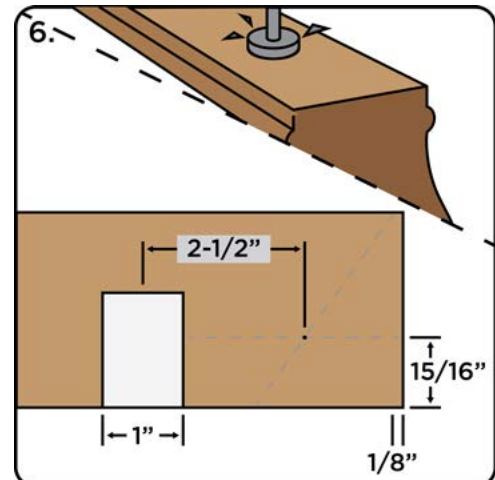


6

DRILL A 1" HOLE:

FOLLOW THE GUIDE SHOWN ON THE OTHER END OF THE RAIL.

MEASURE 2-1/2" FROM THE INTERSECTING POINT AND DRILL A 1" HOLE 1-3/8" DEEP INTO THE UNDERSIDE OF THE RAIL ON CENTER.



JMP INSTRUCTIONALS:

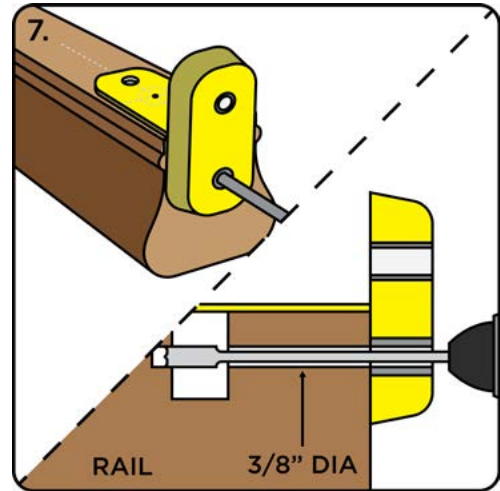
HOW TO INSTALL A POST TO POST RAKE RAIL

7

DRILL A 3/8" USING THE DRILL GUIDE:

FLIP RAIL AND ALIGN THE RAILBOLT DRILL GUIDE WITH THE CENTER OF THE RAIL.

WITH THE 3/8" SIDE DOWN, DRILL A HOLE USING THE [3/8" SPEEDBOR SPADE BIT](#).

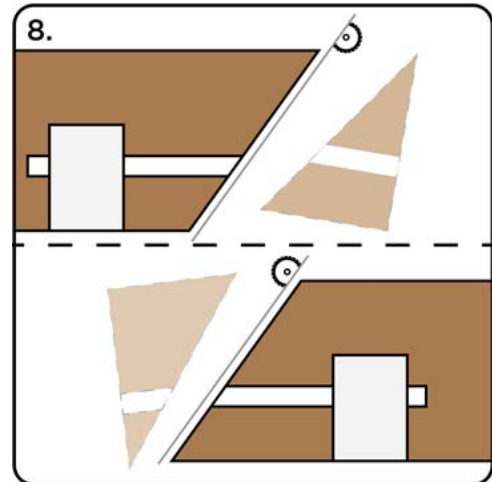


8

SET ANGLES AND CUT THE RAIL:

USING A CHOP SAW, SET THE ANGLE MEASURED FROM [STEP 1](#) AND CUT ALONG THE SCRIBED LINES CREATED IN [STEP 2](#).

REPEAT THIS TO THE OTHER END OF THE RAIL.

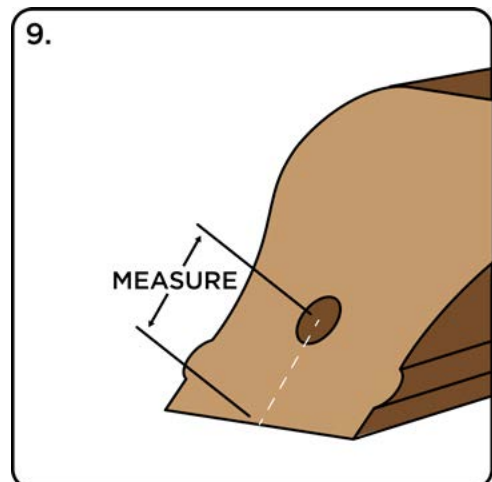


9

MEASURE DISTANCE TO THE CENTER OF THE HOLE:

START FROM THE END THAT WILL BE ATTACHED TO THE BOTTOM POST.

MEASURE AND RECORD THE DISTANCE FROM THE BOTTOM OF THE HANDRAIL TO THE CENTER OF THE 3/8" HOLE ALONG THE CUT SURFACE.



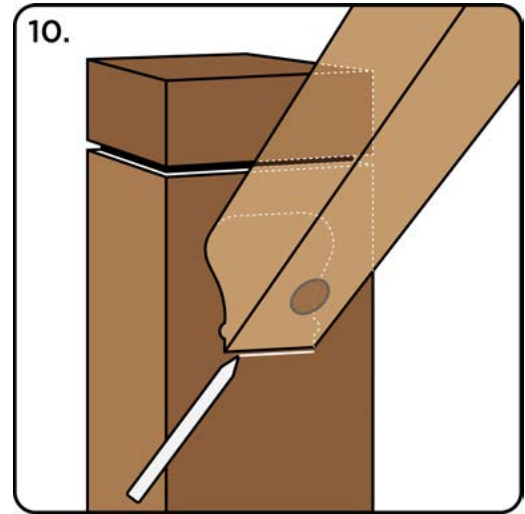
JMP INSTRUCTIONALS:

HOW TO INSTALL A POST TO POST RAKE RAIL

10

POSITION THE RAIL AND MARK:

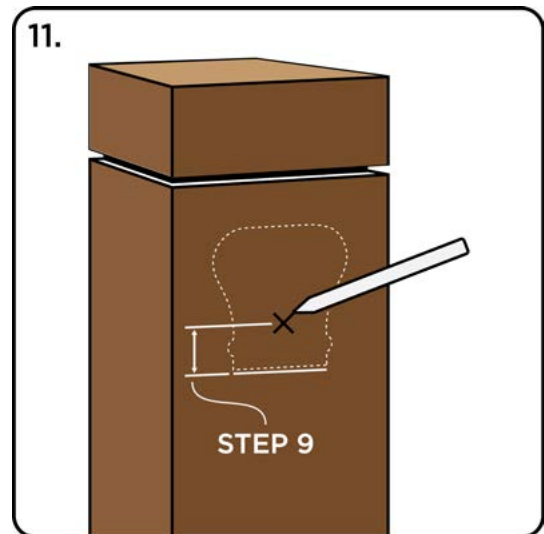
POSITION YOUR RAIL BETWEEN THE POSTS AT THE DESIRED HEIGHT AND MARK THE POSTS ALONG THE BOTTOM OF THE HANDRAIL.



11

MEASURE AND MARK:

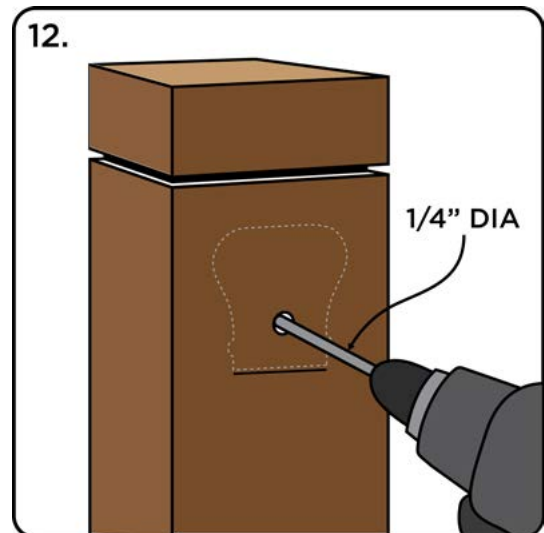
TAKING THE MEASUREMENT RECORDED FROM [STEP 9](#), MARK A POINT ON CENTER FROM THE LINE DRAWN IN STEP 10 ON THE BOTTOM POST.



12

DRILL A 1/4" HOLE:

USING A SPEEDBOR 1/4" BIT, DRILL A HOLE ROUGHLY 2-3/16" DEEP INTO THE POST AT THE MARKED LOCATION.



JMP INSTRUCTIONALS:

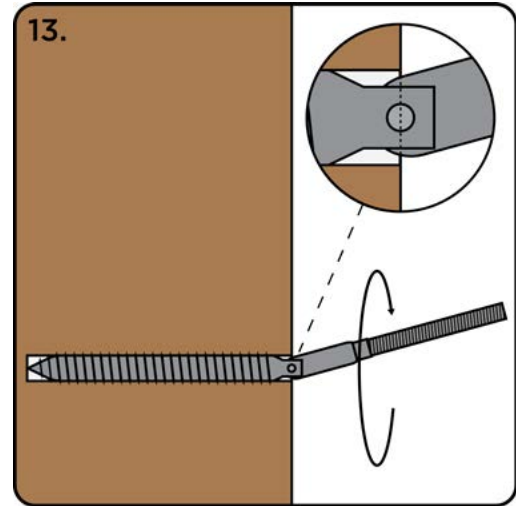
HOW TO INSTALL A POST TO POST RAKE RAIL

13

SCREW IN ANGLED ZIPBOLT SHAFT:

SCREW IN THE [11.500 ANGLED ZIPBOLT SHAFT](#) UNTIL THE JOINT IS FLUSH WITH THE SURFACE OF THE POST.

MAKE SURE THAT THE SHAFT CAN ACTUATE VERTICALLY AND NOT SIDE TO SIDE.

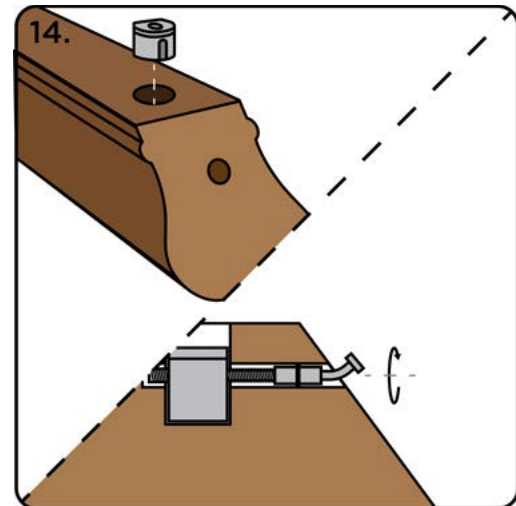


14

INSERT CAM AND THREAD THE SLIPFIX SHAFT:

AT THE END OF THE HANDRAIL WHICH CONNECTS TO THE TOP POST, INSERT THE ZIPBOLT CAM INTO THE 1" HOLE.

NEXT, REVERSE THREAD THE ([13.900/13.950](#)) [ANGLED SLIPFIX SHAFT INTO THE ZIPBOLT CAM](#) UNTIL JUST THE CURVED END IS STICKING OUT.

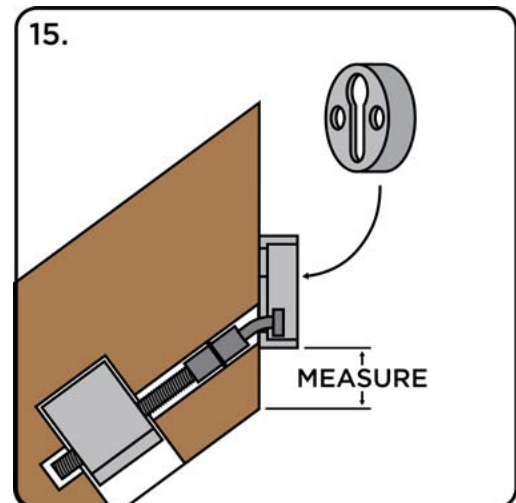


15

FIT THE FACEPLATE TO THE ZIPBOLT SHAFT:

FIT THE SLIPFIX FACEPLATE TO THE ZIPBOLT SHAFT AND SHIFT THE PLATE INTO IT'S LOCKED POSITION.

MEASURE THE DISTANCE FROM THE BOTTOM OF THE HANDRAIL TO THE BOTTOM OF THE FACEPLATE.



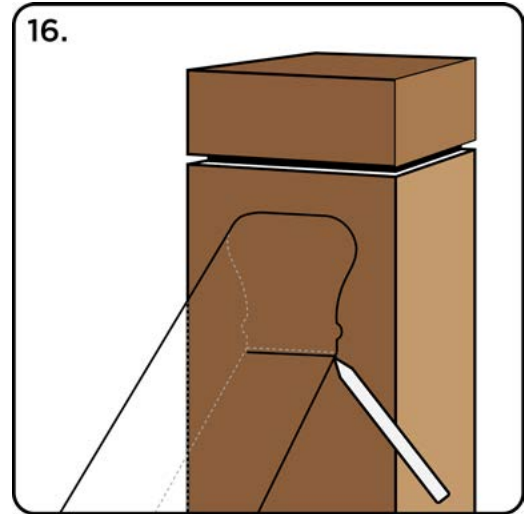
JMP INSTRUCTIONALS:

HOW TO INSTALL A POST TO POST RAKE RAIL

16

MEASURE AND MARK:

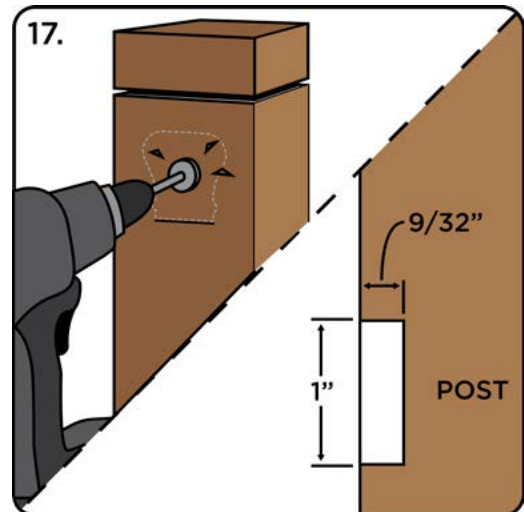
TAKING THE MEASUREMENT RECORDED FROM STEP 15, ADD $15/32$ " TO THAT MEASUREMENT, AND MARK A POINT ON CENTER FROM THE LINE DRAWN IN STEP 10 ON THE TOP POST.



17

DRILL A 1" HOLE:

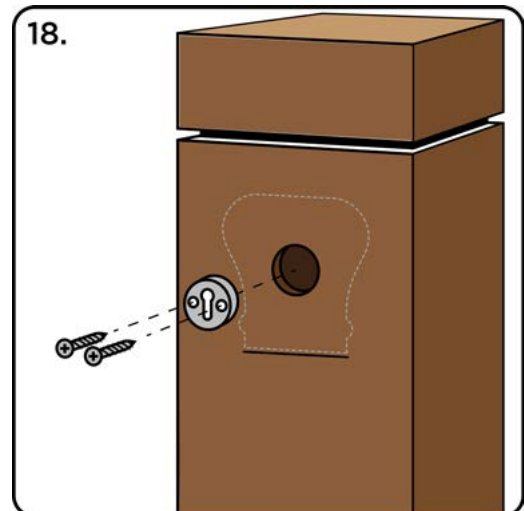
DRILL A 1" HOLE ROUGHLY $9/32$ " DEEP INTO THE POST, OR UNTIL THE SLIPFIX FACEPLATE IS FLUSH WITH THE SURFACE OF THE POST.



18

INSTALL THE SLIPFIX FACEPLATE:

INSTALL THE [SLIPFIX FACEPLATE](#) WITH THE INCLUDED HARDWARE.



JMP INSTRUCTIONALS:

HOW TO INSTALL A POST TO POST RAKE RAIL

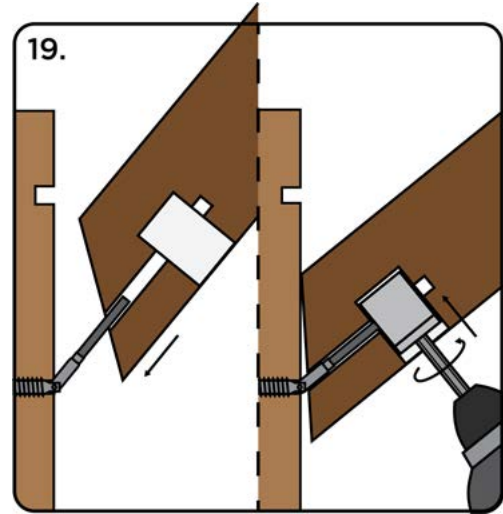
19

INSTALL THE BOTTOM END OF THE RAIL:

INSTALL THE BOTTOM END OF THE HANDRAIL AS DEPICTED.

INSERT THE ZIPBOLT CAM INTO THE 1" HOLE AND THREAD THE CAM ONTO THE SHAFT USING THE [ZIPBOLT HEX DRIVER](#).

LEAVE THE ZIPBOLT LOOSE SO THAT YOU CAN STILL MOVE THE HANDRAIL.



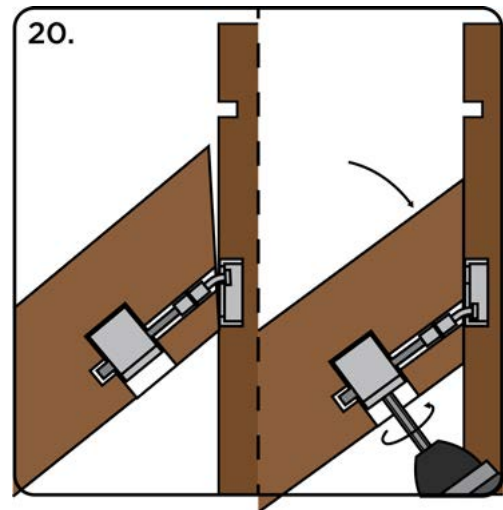
20

SET THE TOP END OF THE RAIL:

INSERT THE SHAFT INTO THE FACEPLATE AND SHIFT THE RAIL INTO ITS FINAL POSITION.

IF NECESSARY, TIGHTEN OR LOOSEN THE CAMS ON EITHER END OF THE RAIL.

ONCE IN PLACE TIGHTEN DOWN BOTH OF THE ZIPBOLT CAMS.

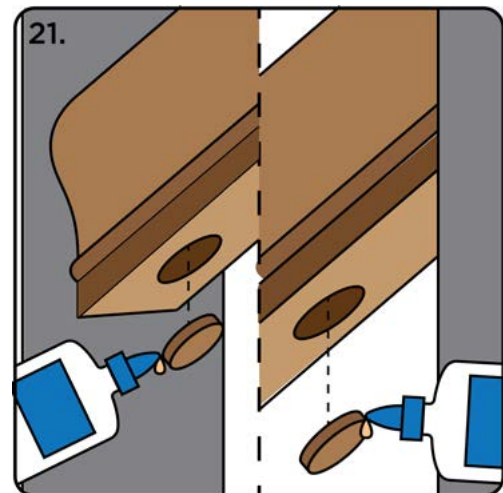


21

GLUE IN PLUGS AND FINISH:

GLUE IN THE PLUGS PROVIDED WITH THE ZIPBOLT KITS.

WE RECOMMEND [TITEBOND II PREMIUM INTERIOR & EXTERIOR WOOD GLUE](#).





NOTICE: FAILURE TO PROPERLY SECURE THE HANDRAIL IS DANGEROUS.

IT IS IMPERATIVE THAT THE POST IS PROPERLY SECURED TO THE POST. IMPROPER MOUNTING CAN RESULT IN DEATH OR INJURY.



NOTICE



Important Note: Consumer Self-Installation

Please note that you if have chosen to install the product yourself. It is crucial to emphasize that you, as the consumer, are solely responsible for the installation process. We highly recommend adhering to your local building codes, regulations, and guidelines while installing our product. Local codes vary, and it is your responsibility to comply with them to guarantee a safe and secure installation.

JMPWood Disclaimer:

JMPWood assumes no liability for any risks, damages, or issues that may arise due to improper installation. Our installation guide is provided as a reference, but it is not a substitute for professional installation services. If you are unsure about any step of the installation process, we strongly recommend consulting a qualified professional or contractor.

