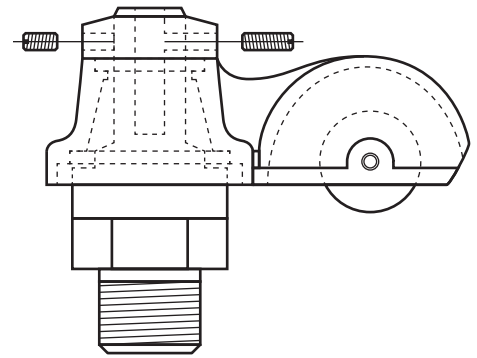
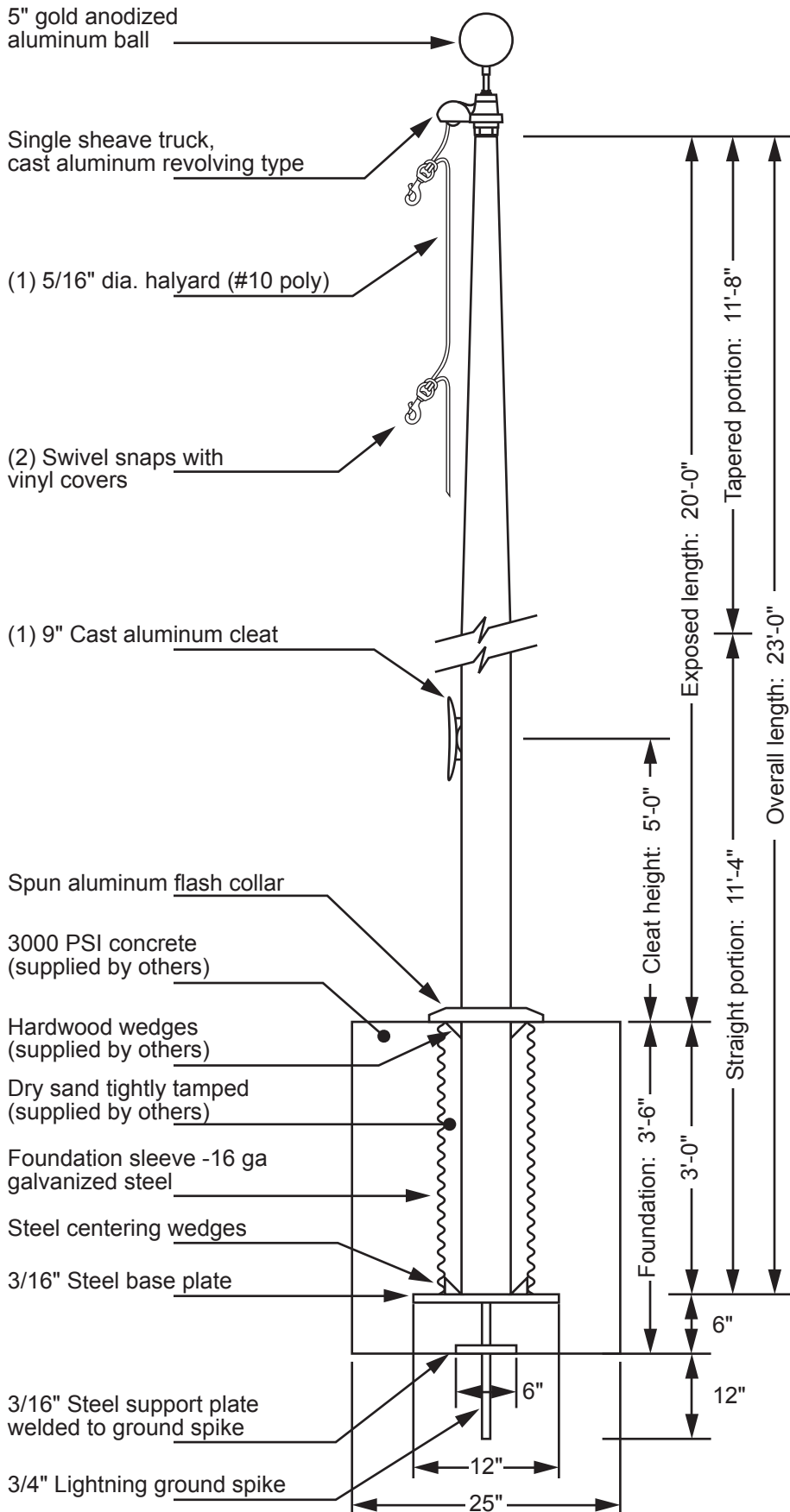


Model ECX20 - External Single Halyard



Single Sheave Truck Detail

Revolving truck
Cast aluminum body
Stainless steel ball bearings
Nylon sheave
Cast aluminum spindle

HD FLAGPOLES

Project:	Date:	Exposed Height __ 20'-0"	Ground Set Tapered
Location:	Job:	Overall Height __ 23'-0"	Aluminum Flagpole
Contractor:	Revision:	Butt Diameter __ 5"	ALLOY 6063T6
Customer:		Top Diameter __ 3"	80 grit polish
		Wall Thickness __ .125"	FINISH:
		Ships in 1 section	