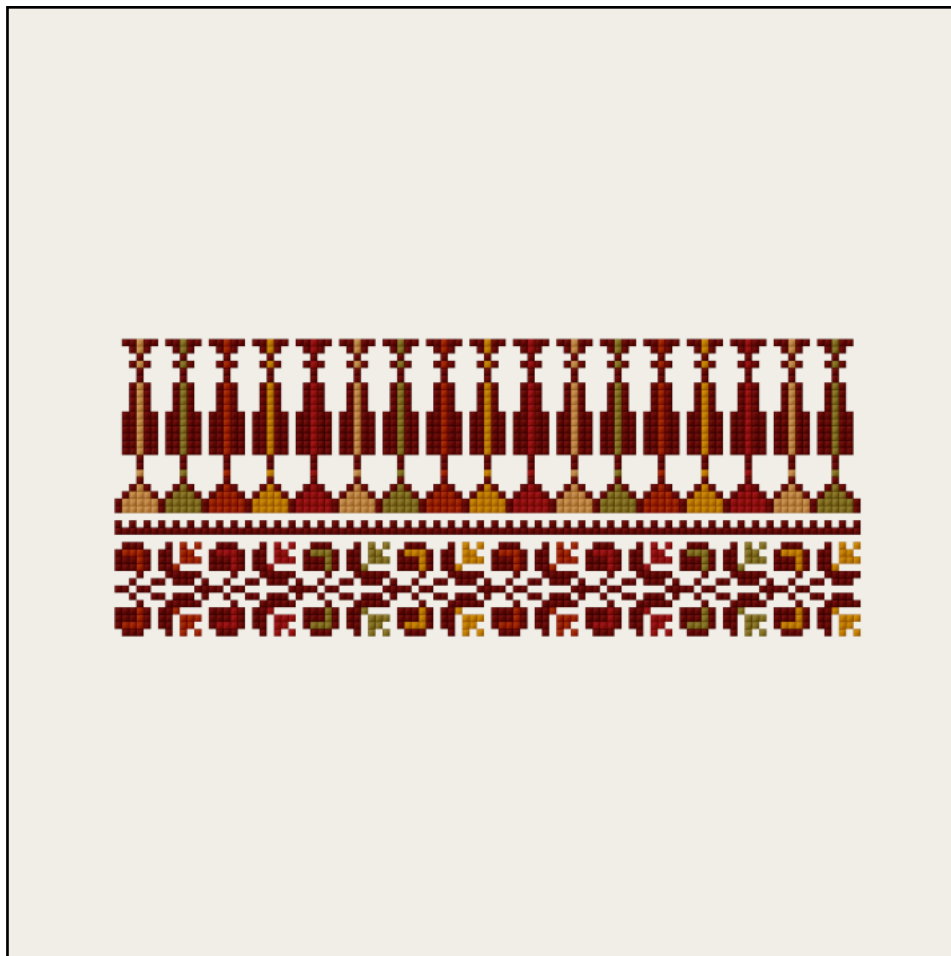


Trees Of Jaffa



Pattern size: 132 x 72

Fabric count: 12

Finished size: 11.0 x 6.0"

Total stitches: 2,297

Number of strands: 1

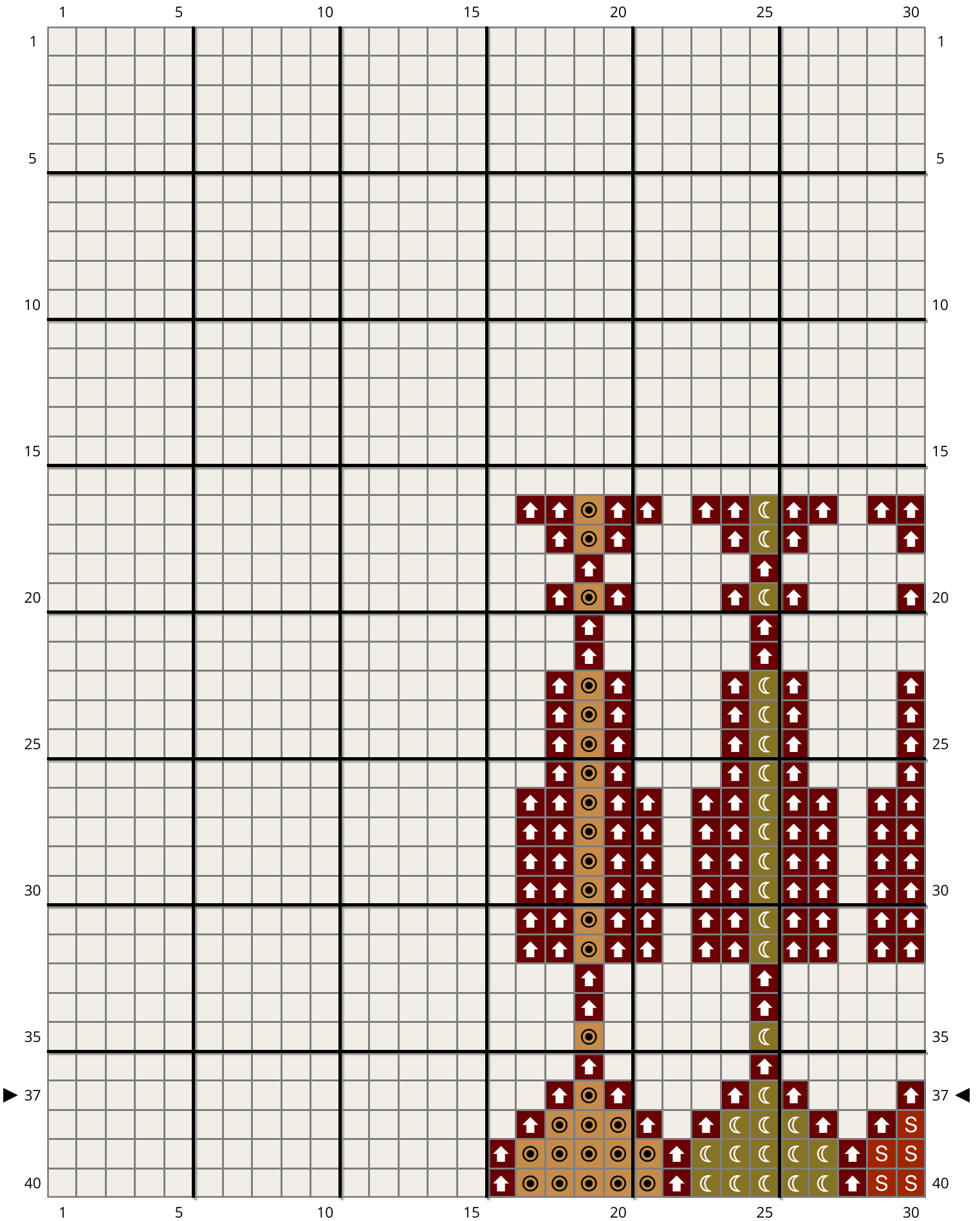
Total skeins: 6

Fabric color: Antique White (101)

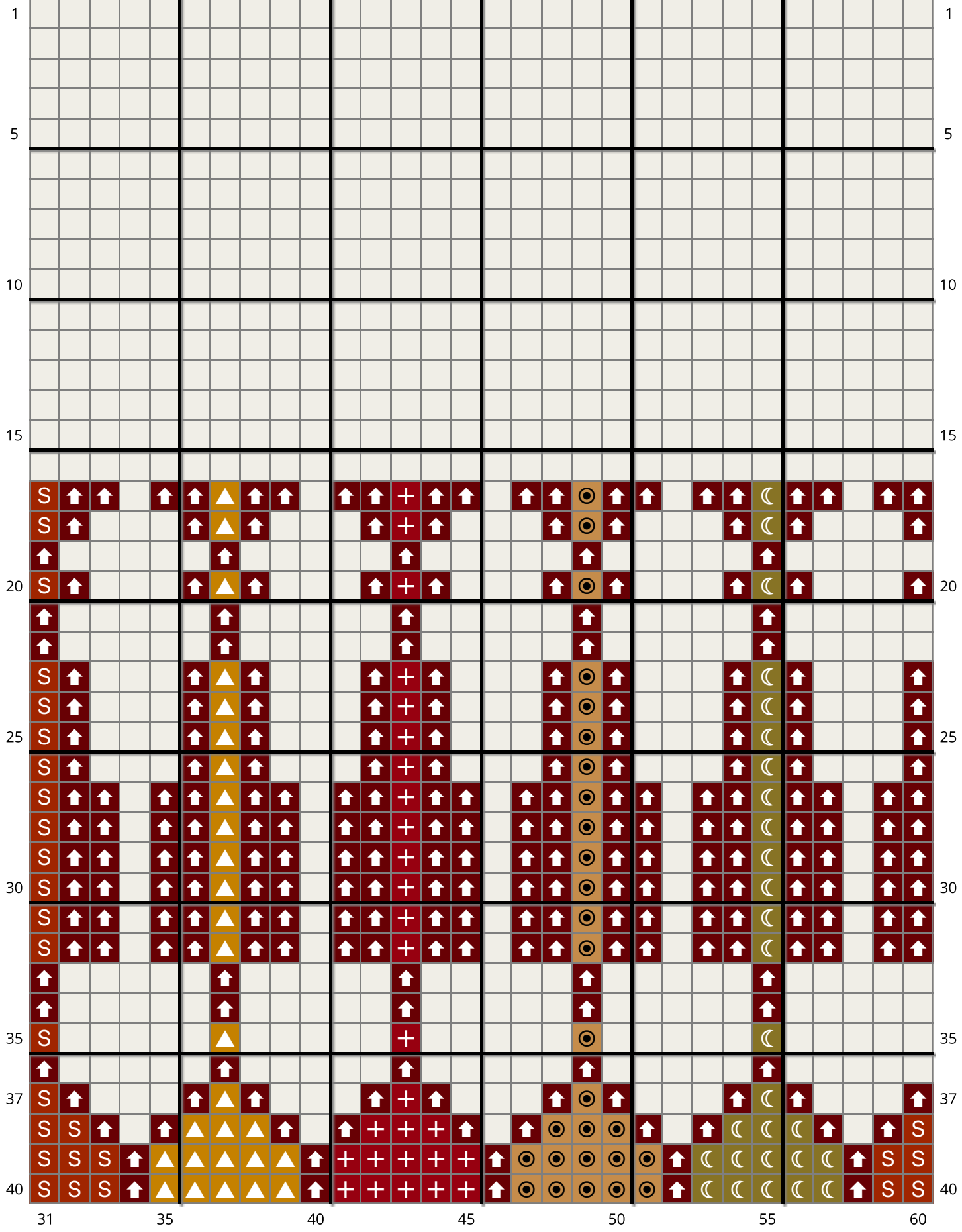


© 2024 Badan Collective

badancollective.com

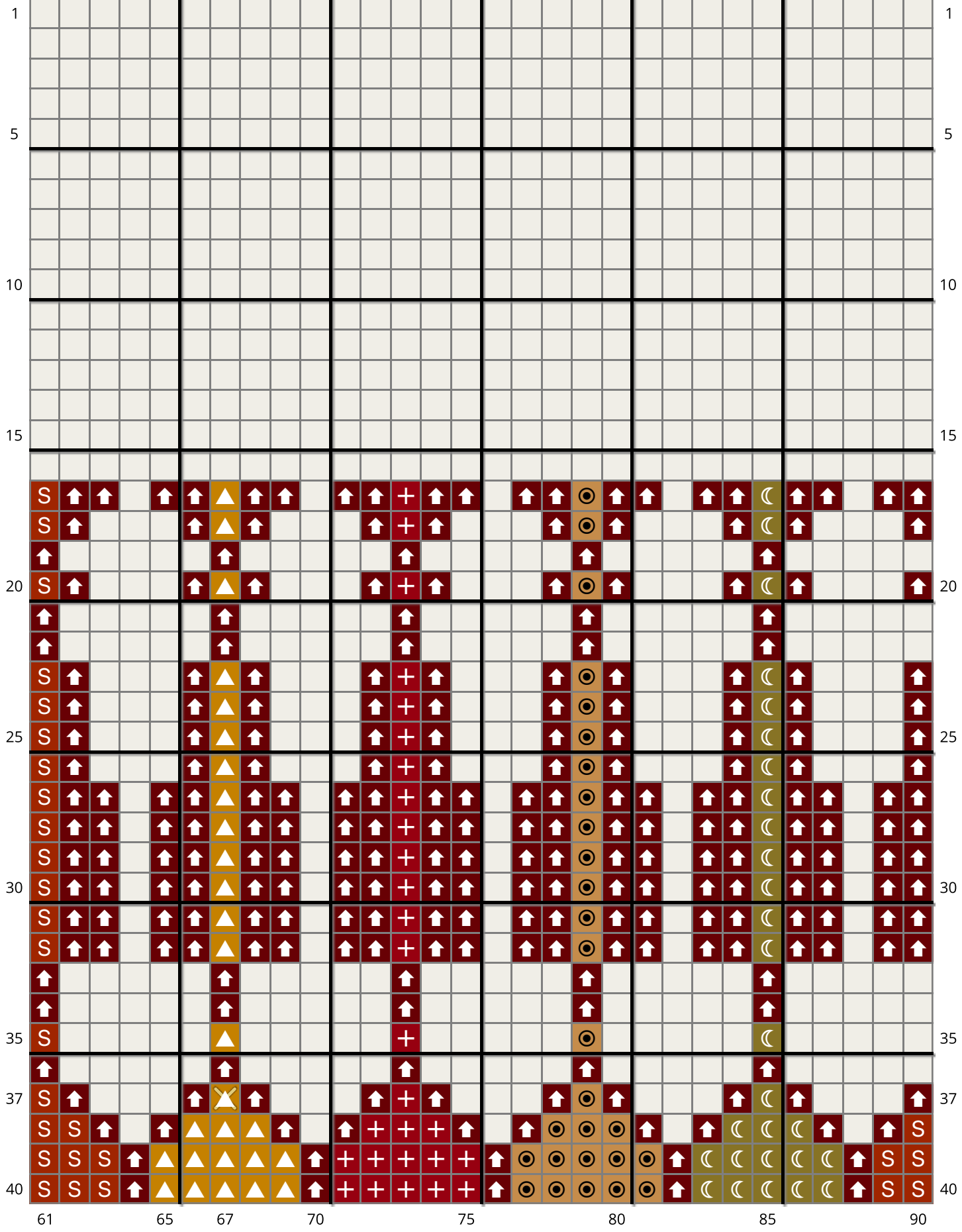


31 35 40 45 50 55 60

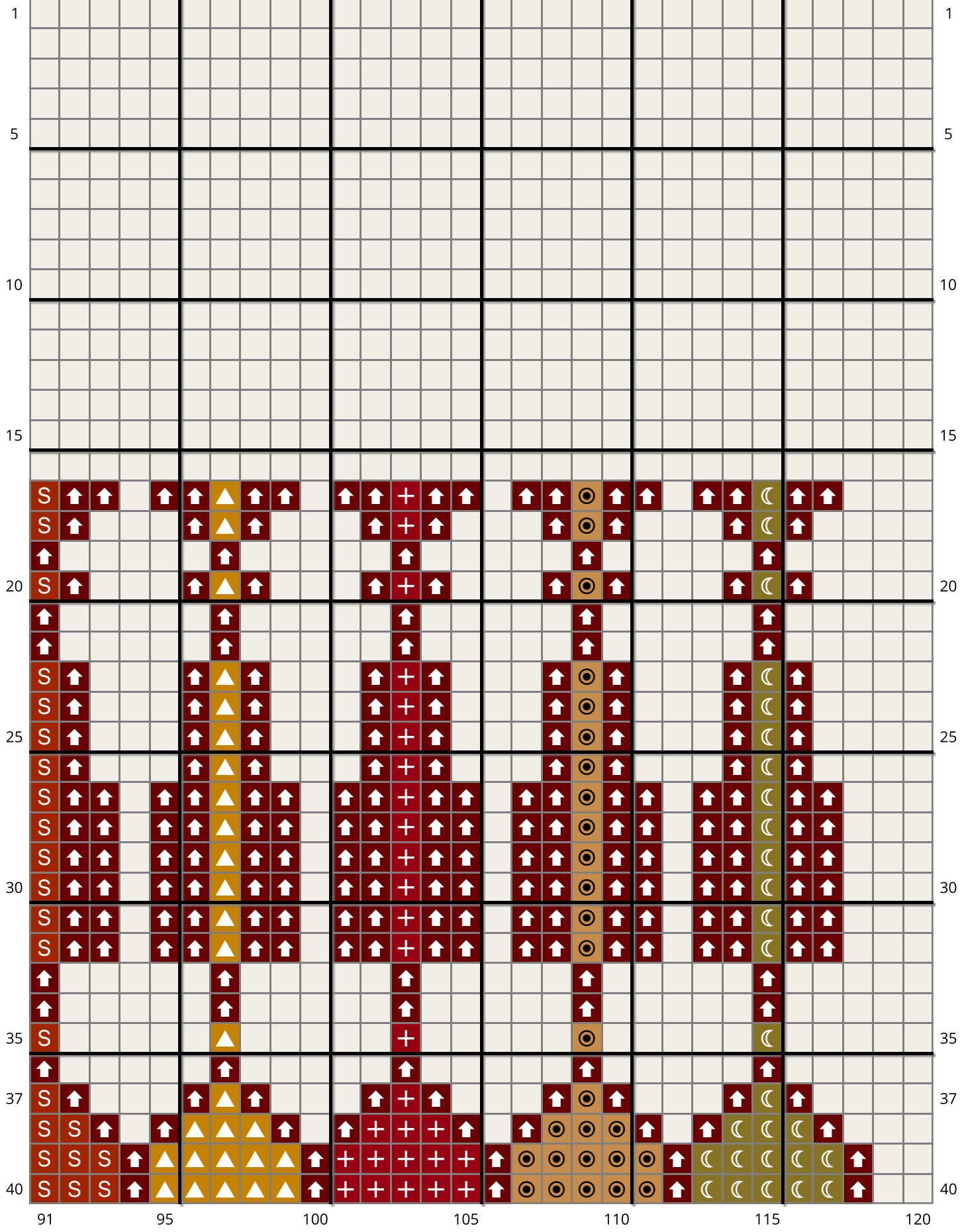


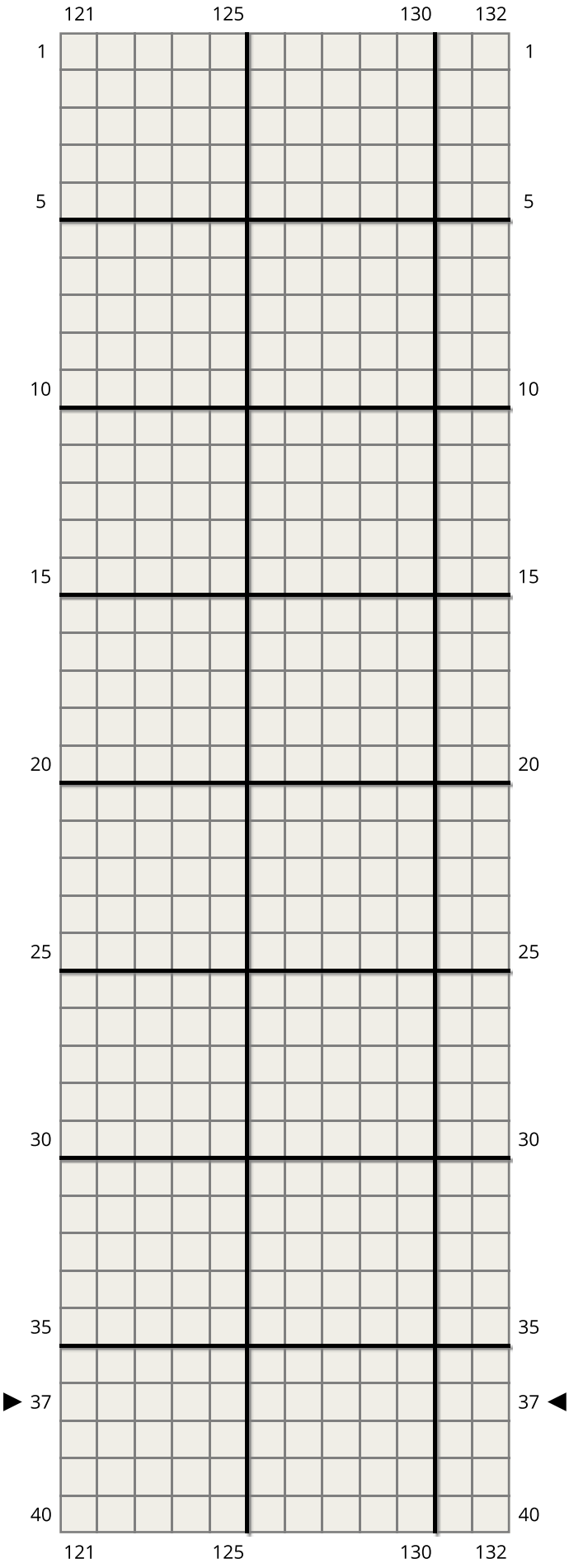


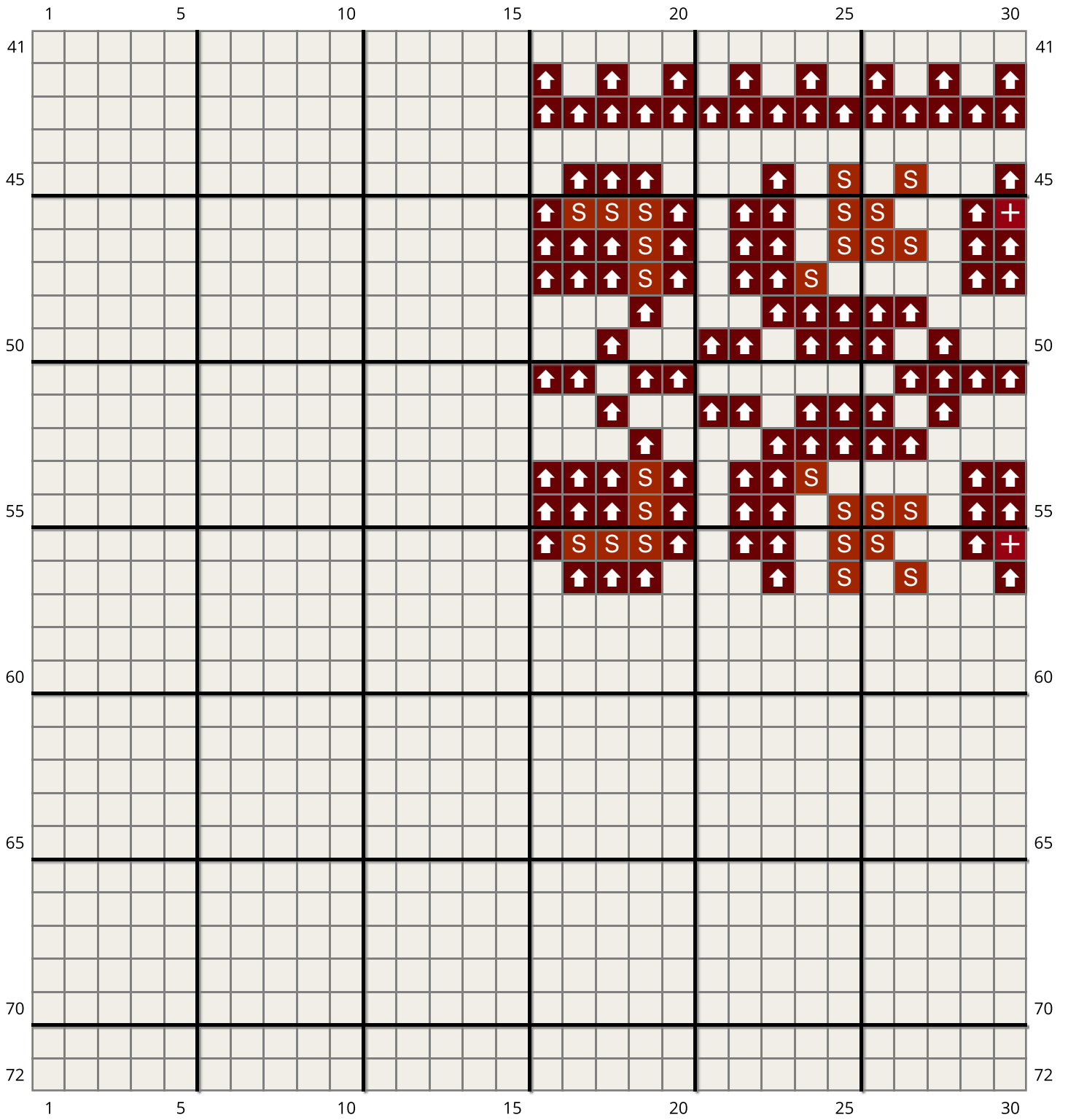
61 65 67 70 75 80 85 90

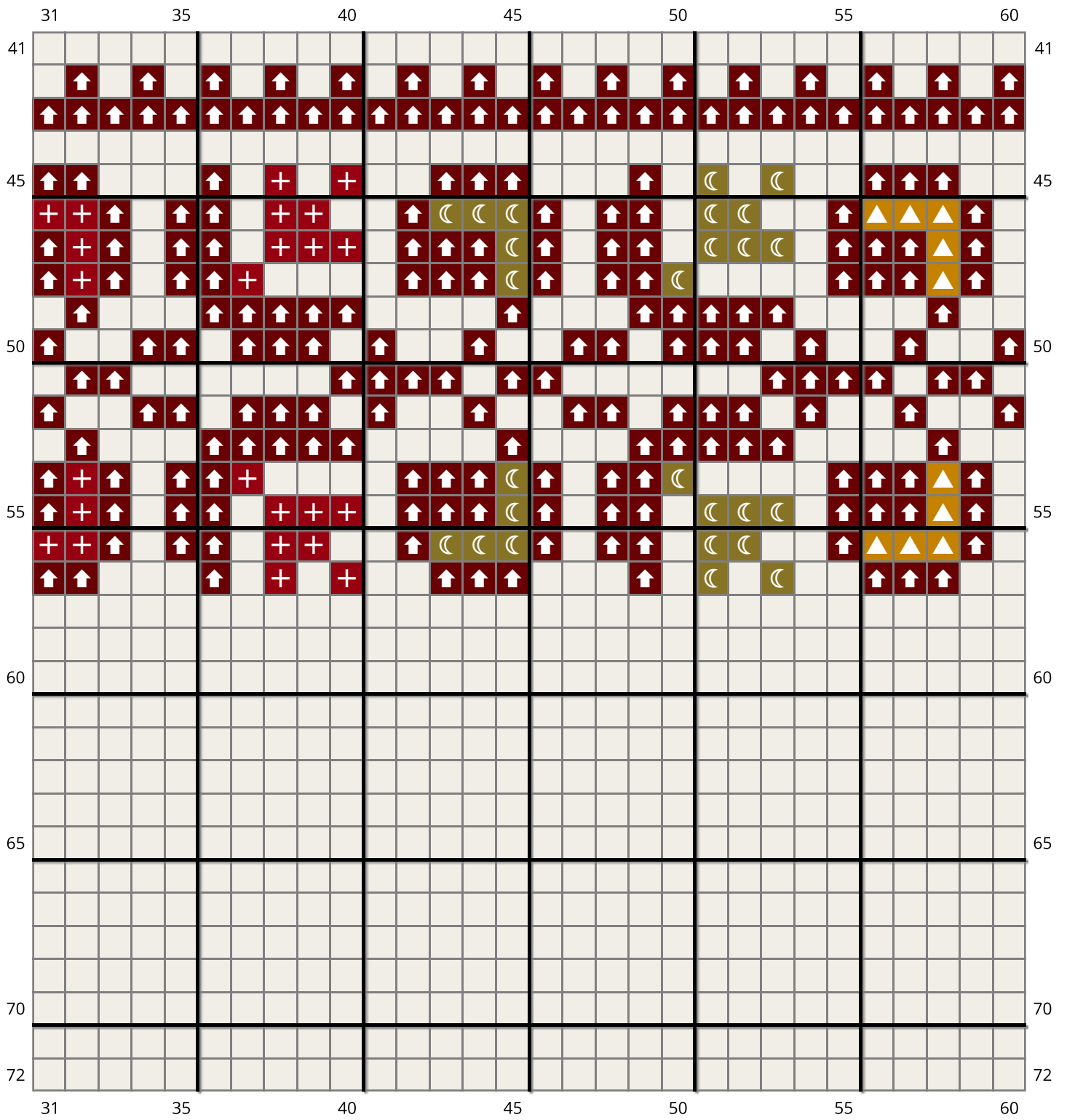


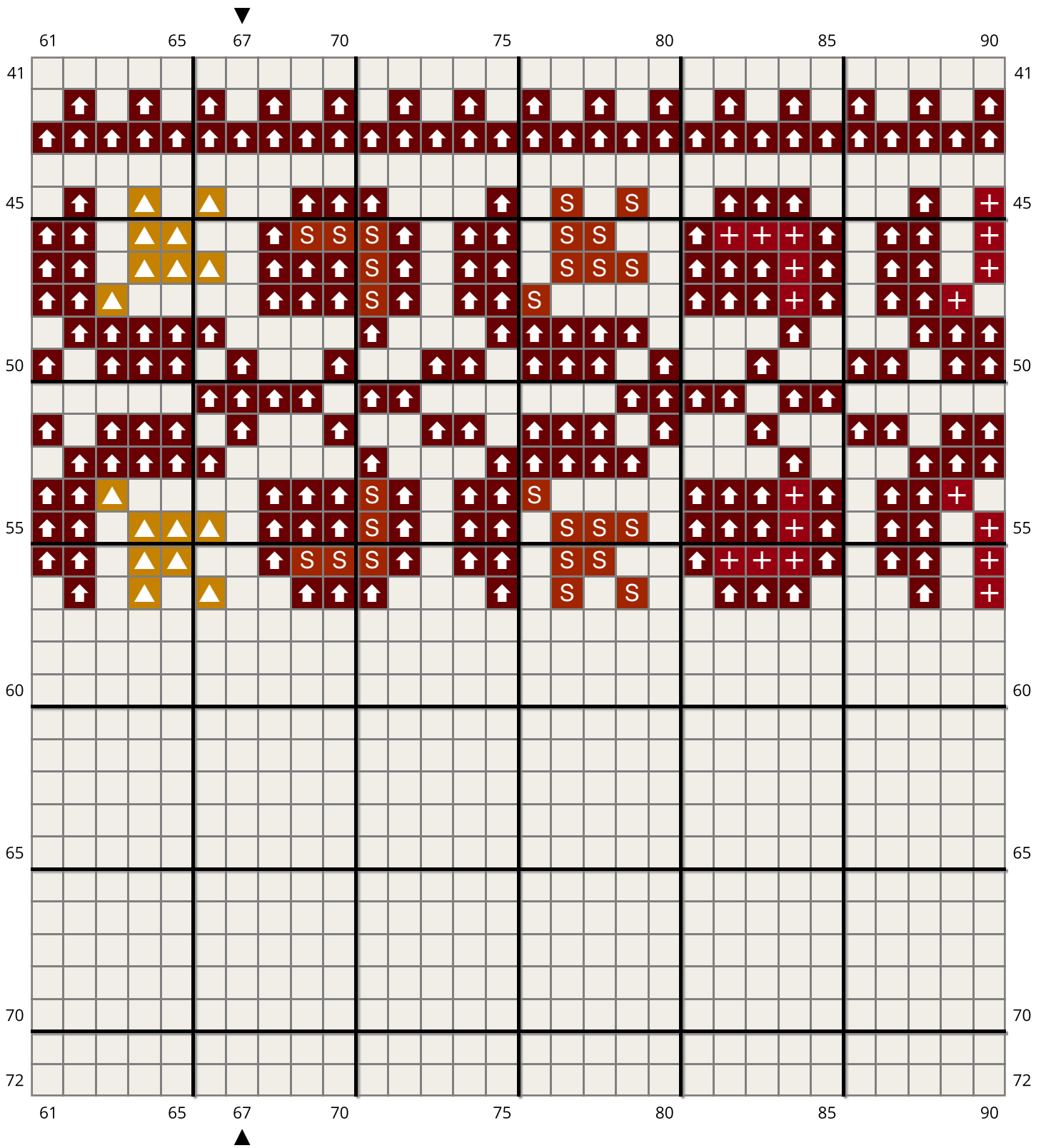
91 95 100 105 110 115 120

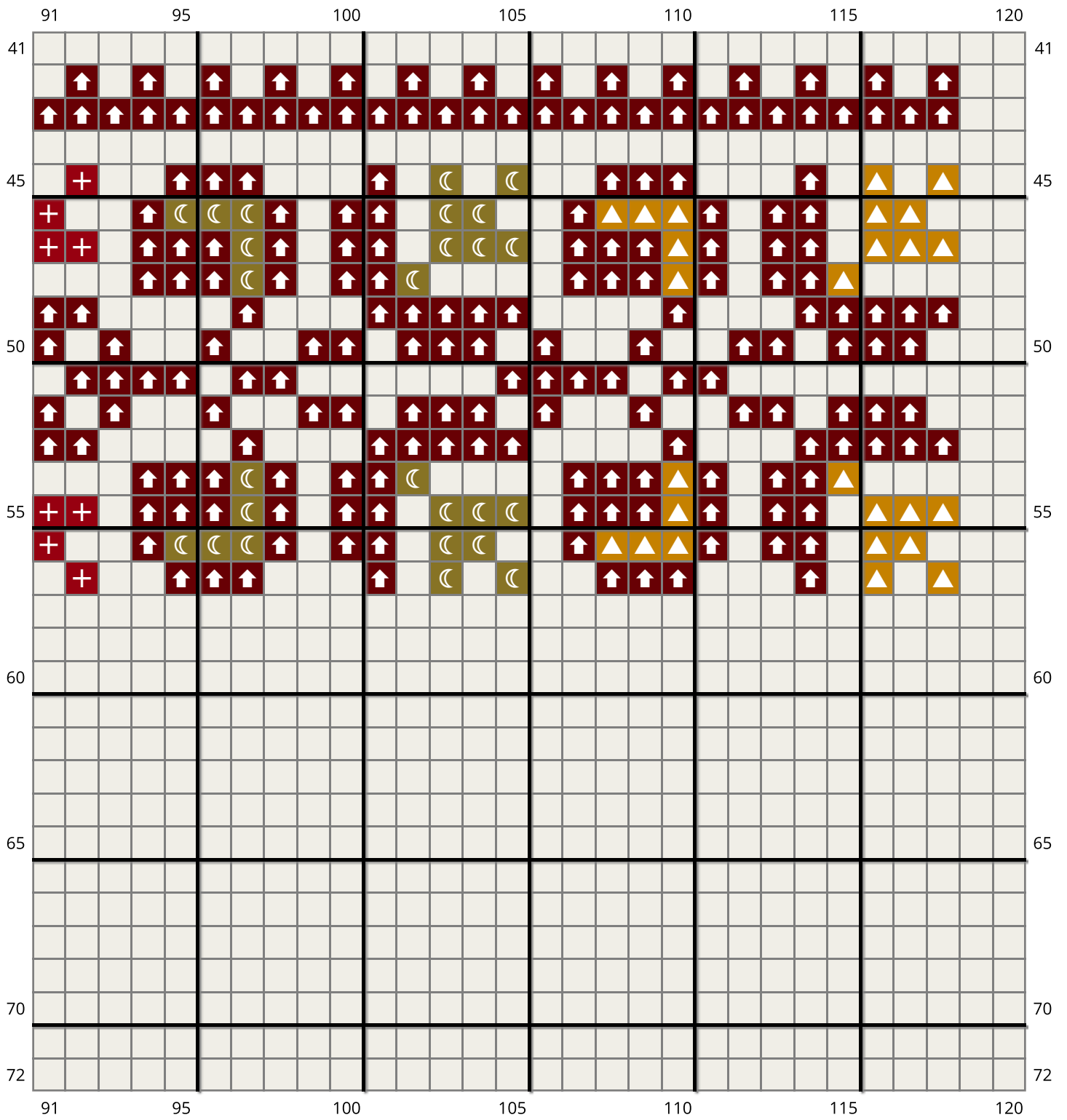


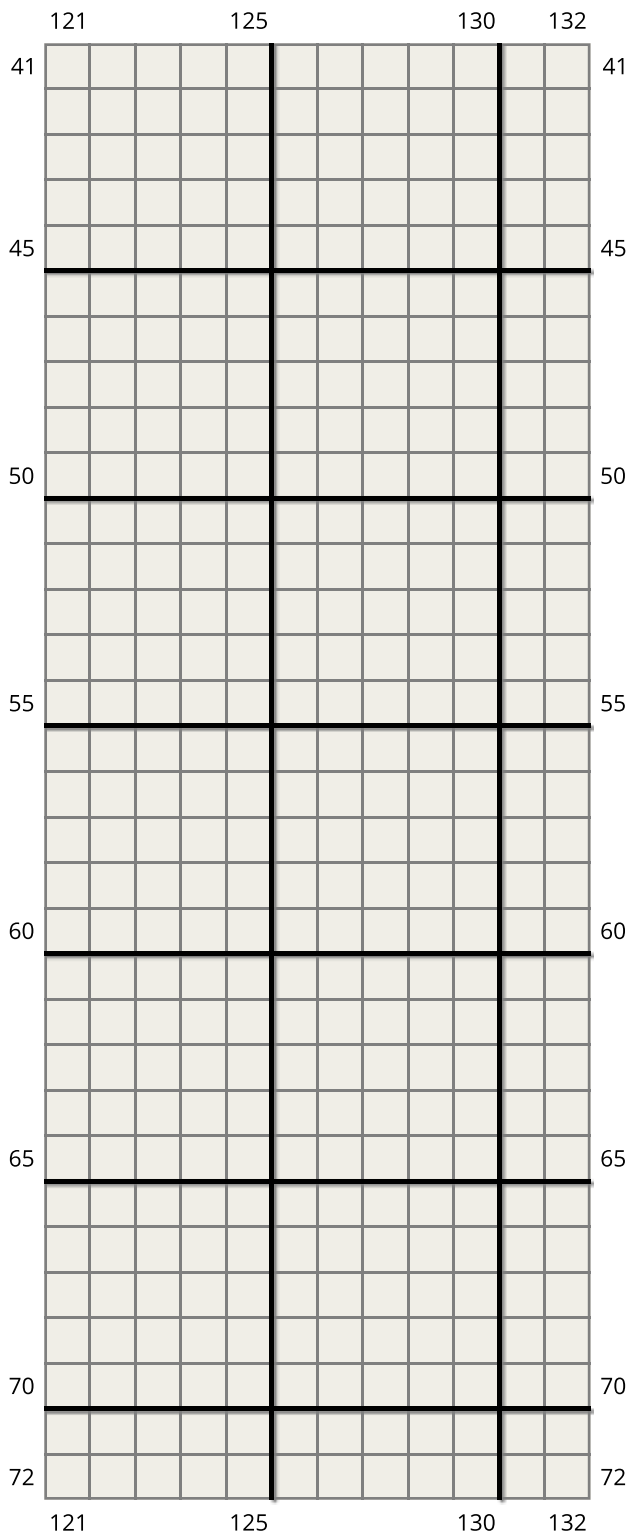


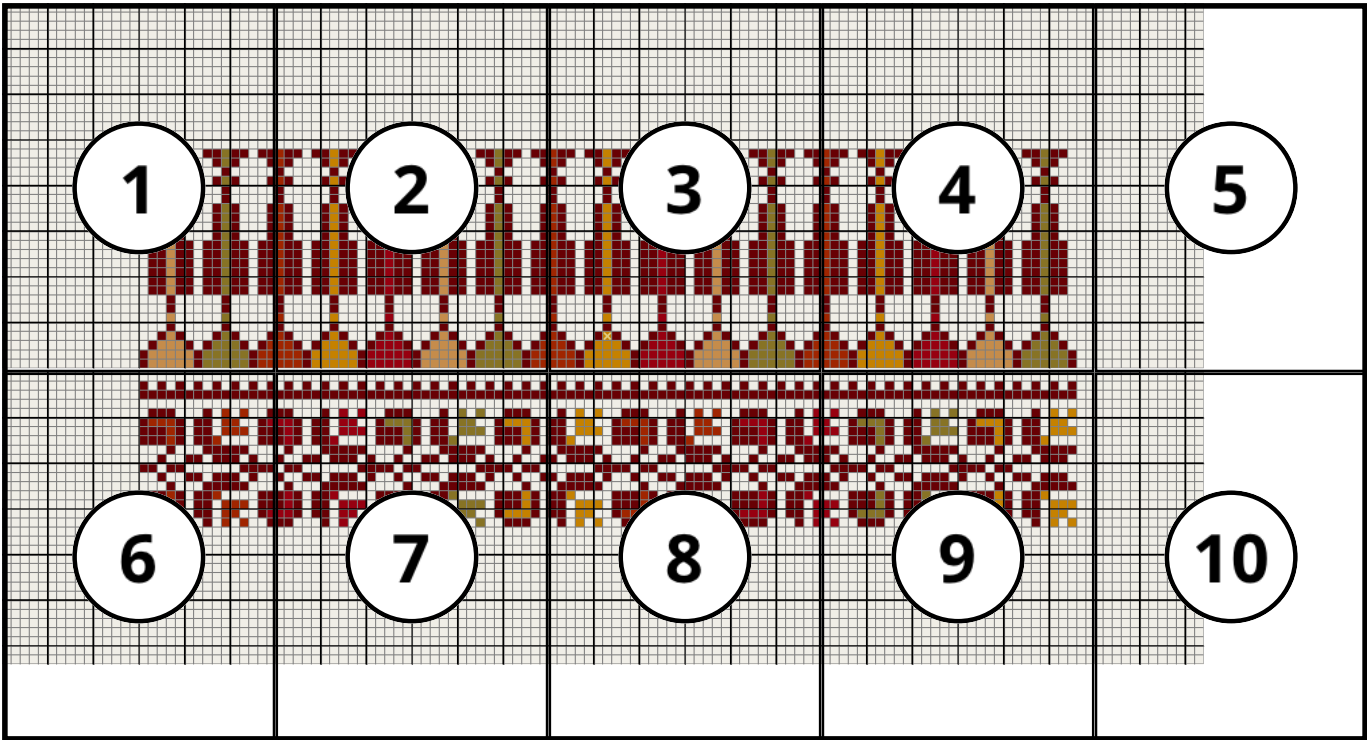












DMC Stranded (D)



D321
Red
Stitches: 136 - Skeins: 1



D436
Tan
Stitches: 112 - Skeins: 1



D783
Topaz MD
Stitches: 136 - Skeins: 1



D815
Garnet MD
Stitches: 1,613 - Skeins: 1



D831
Golden Olive MD
Stitches: 164 - Skeins: 1



D918
Red Copper DK
Stitches: 136 - Skeins: 1