

Soul Of The Soul



Pattern size: 96 x 120

Fabric count: 12

Finished size: 8.0 x 10.0"

Total stitches: 2,401

Number of strands: 1

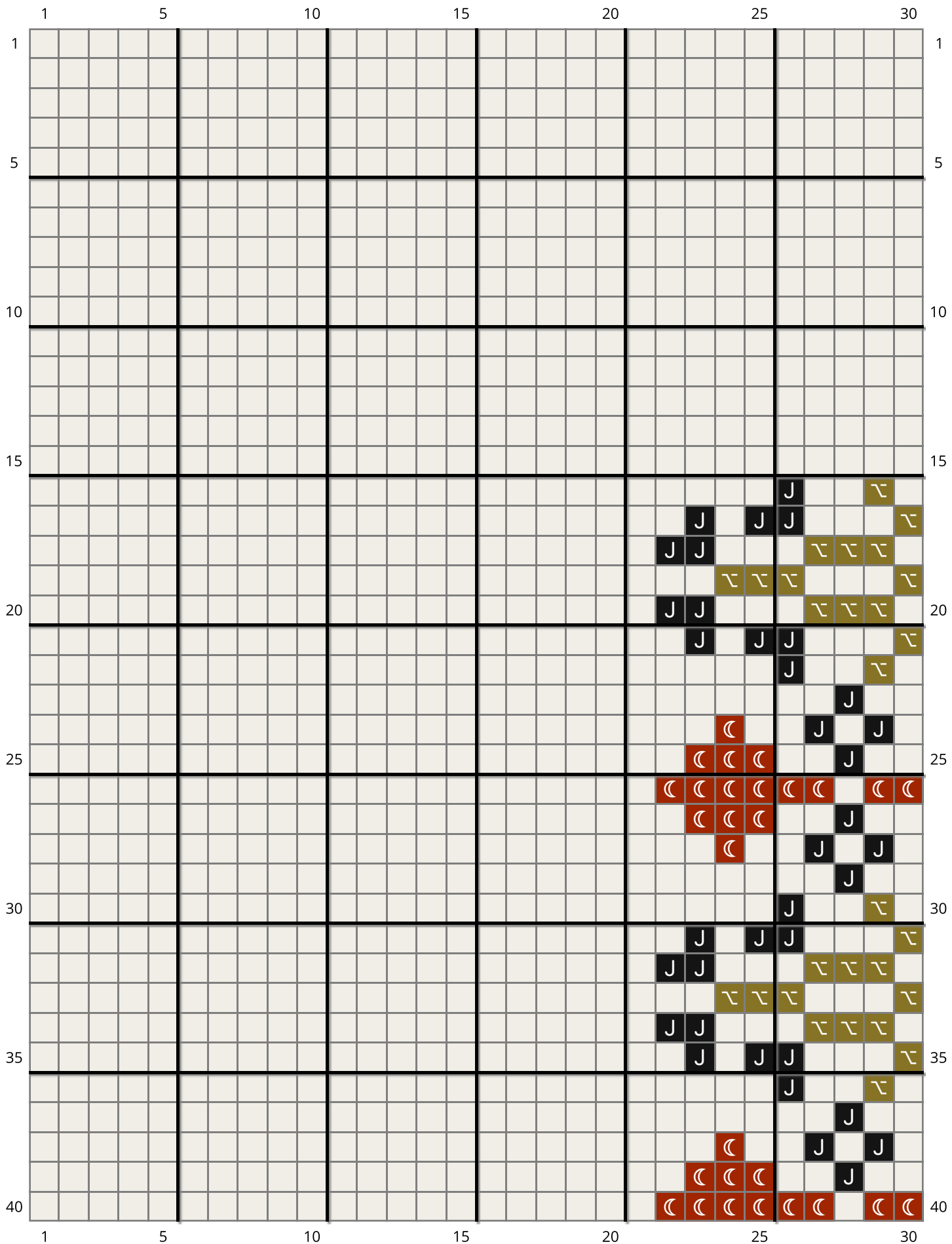
Total skeins: 3

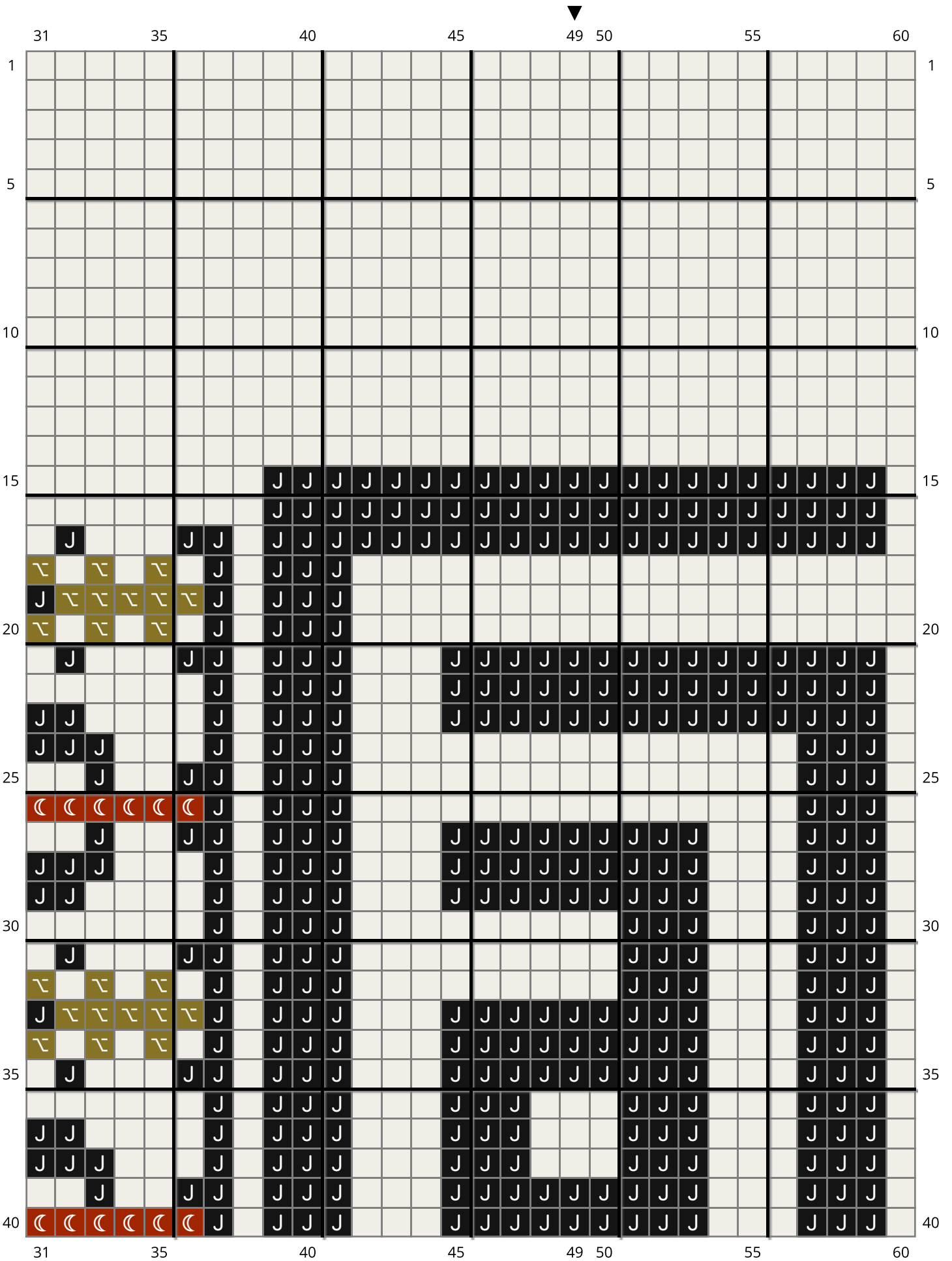
Fabric color: Antique White (101)

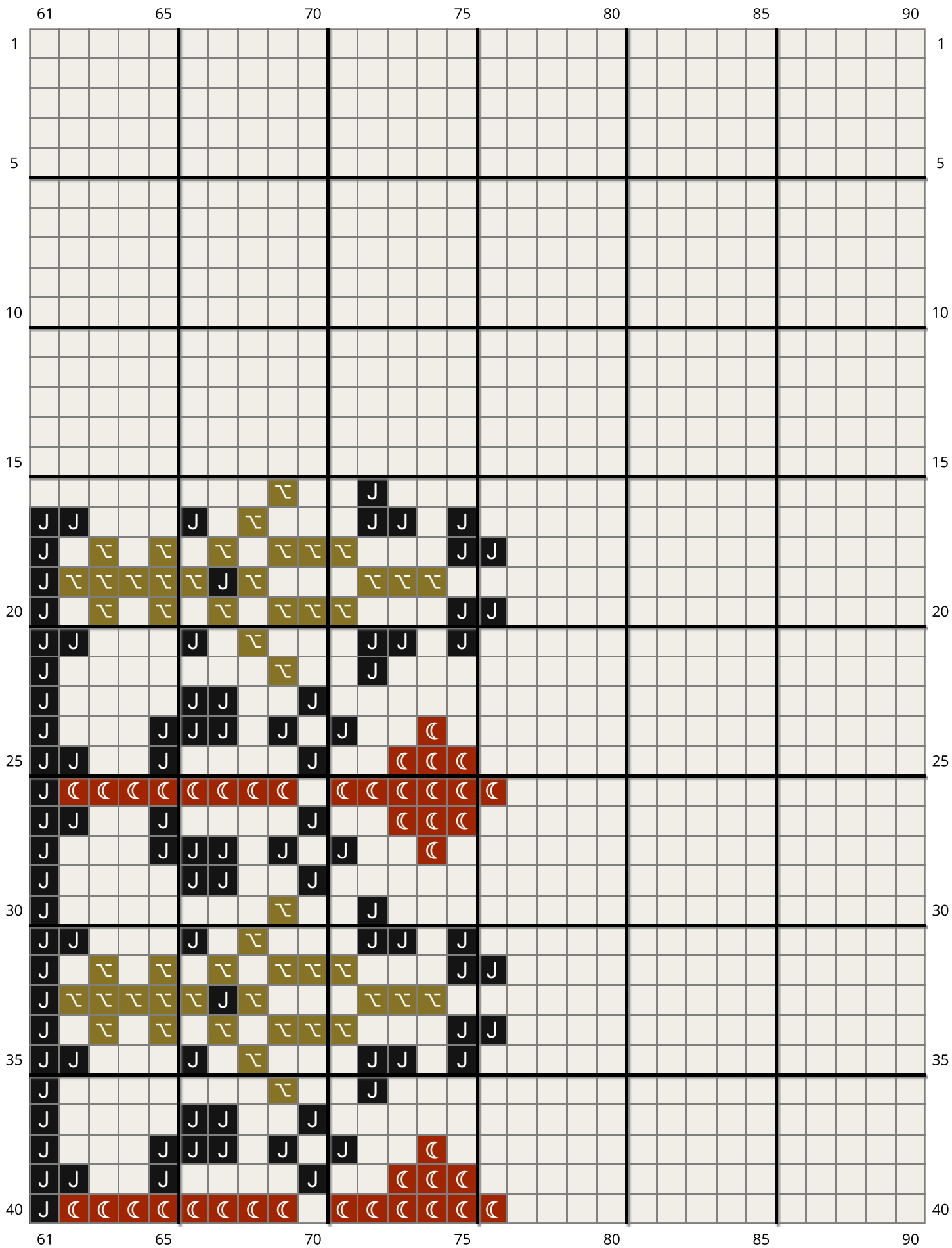


© 2024 Badan Collective

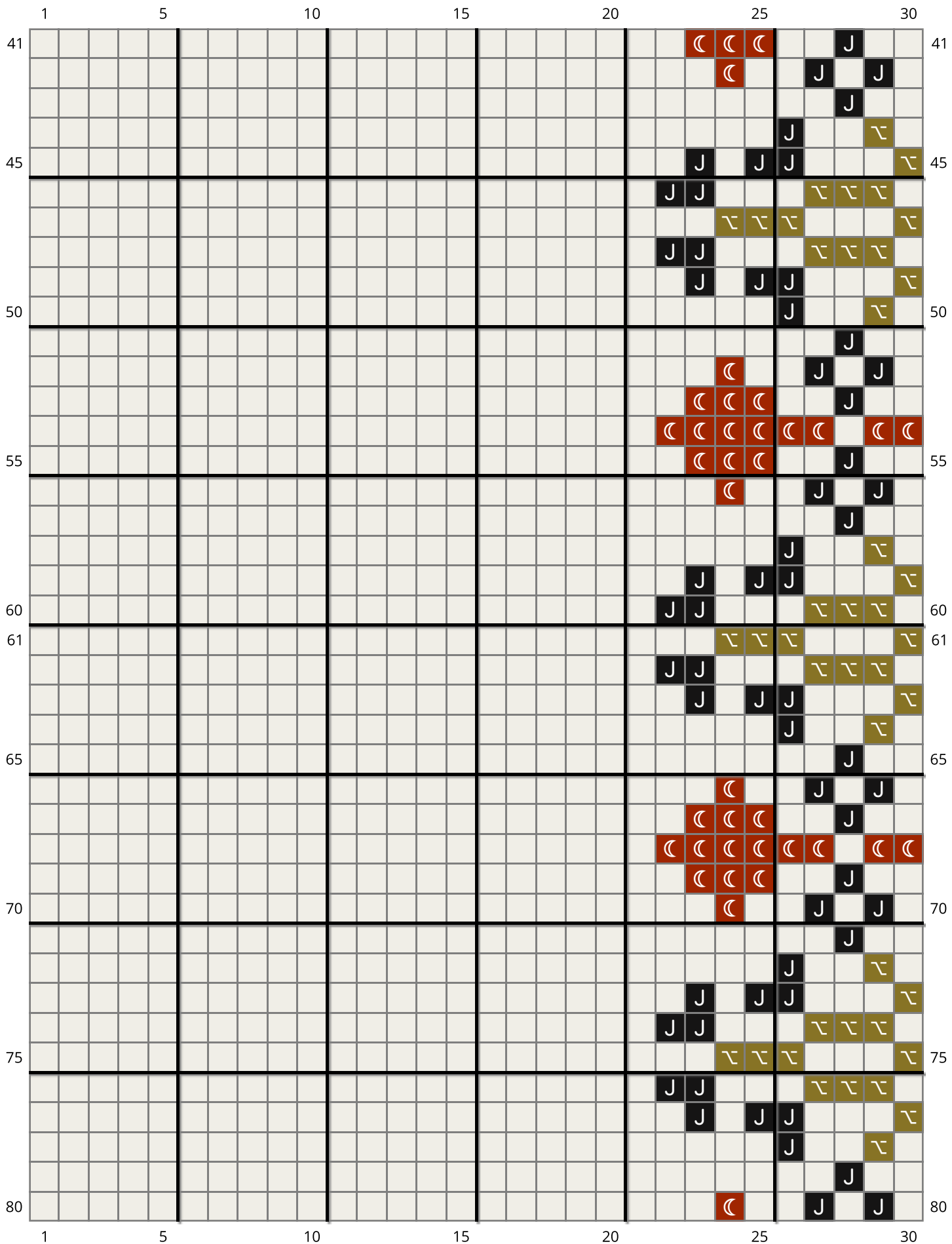
badancollective.com

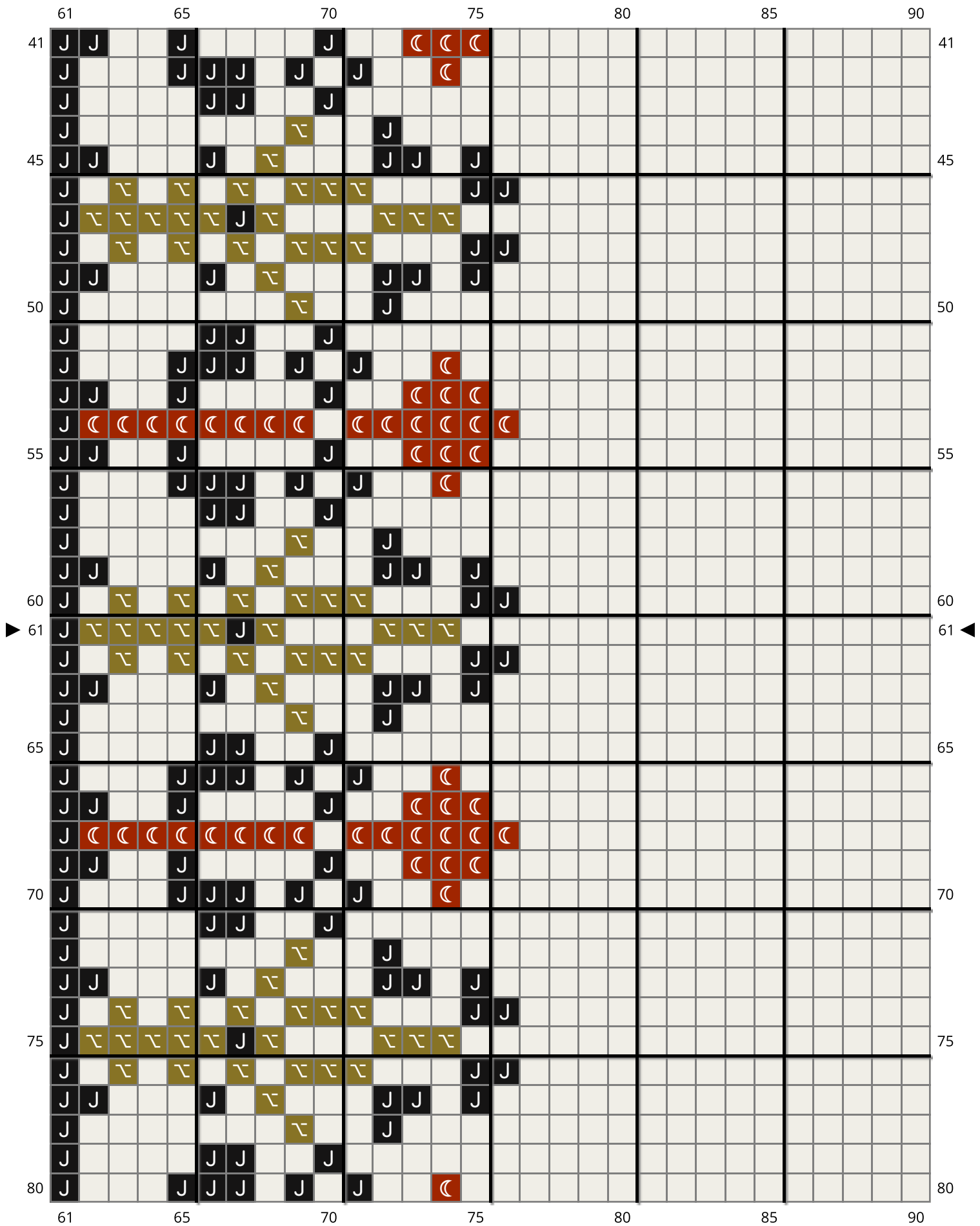




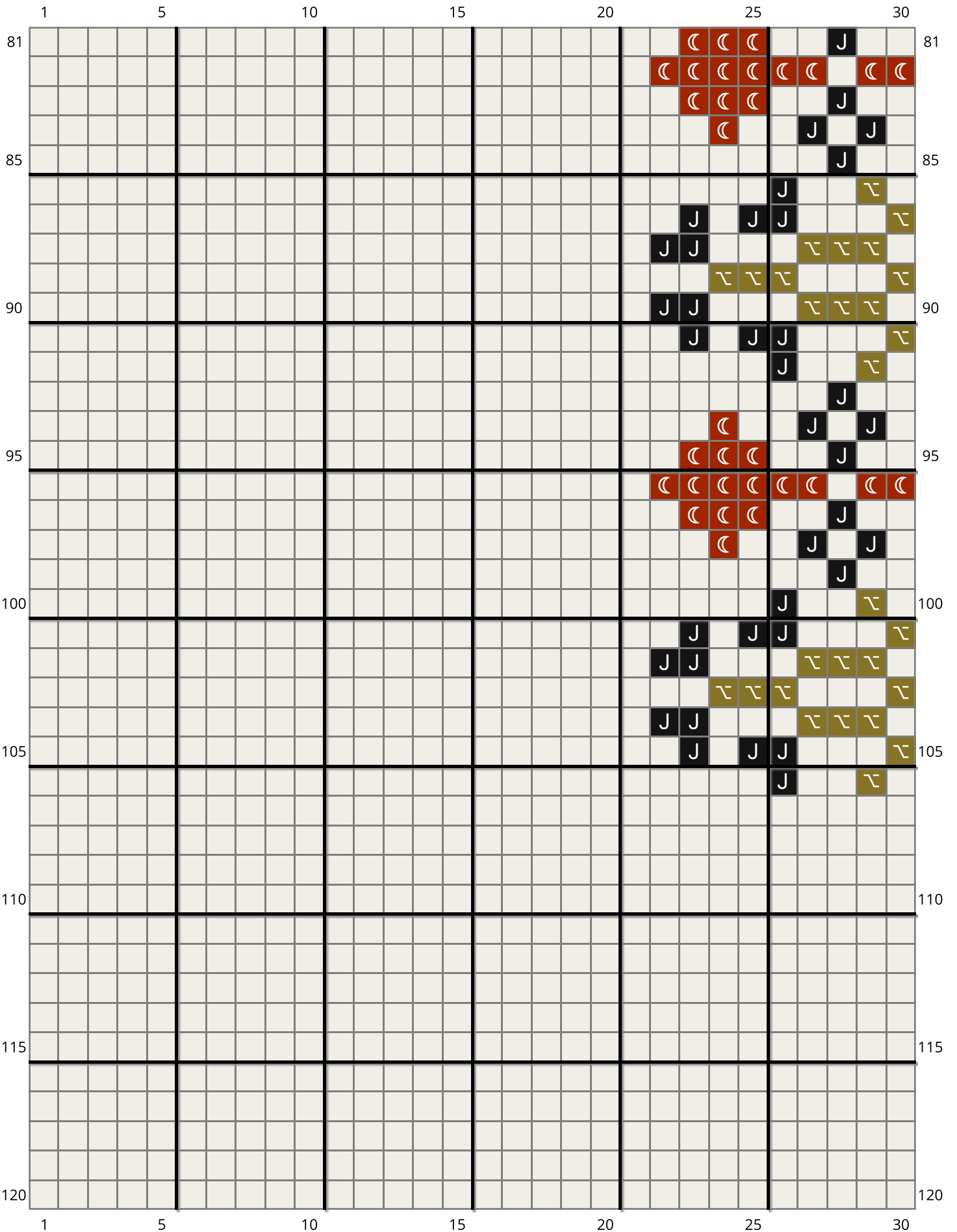


	91				95	96	
1							1
5							5
10							10
15							15
20							20
25							25
30							30
35							35
40							40
	91				95	96	





41	91				95	96	41
45							45
50							50
55							55
60							60
▶ 61							61 ◀
65							65
70							70
75							75
80							80
	91				95	96	





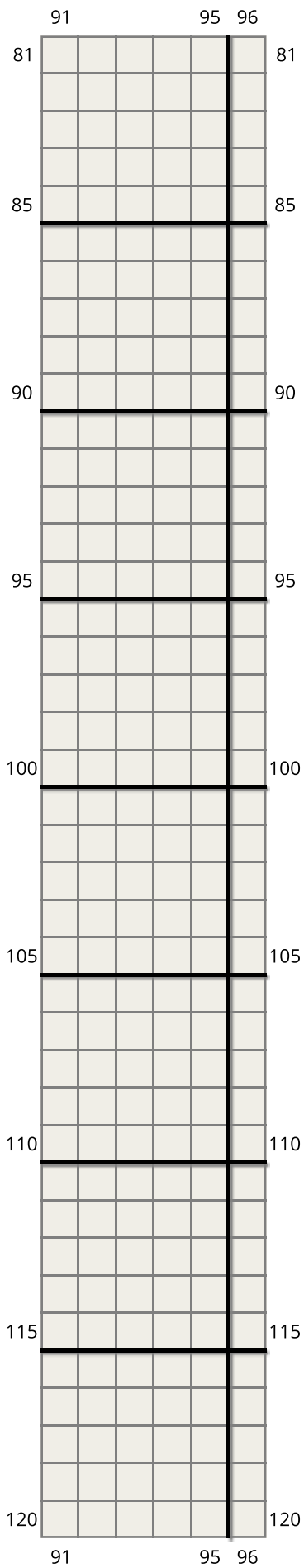
31 35 40 45 49 50 55 60

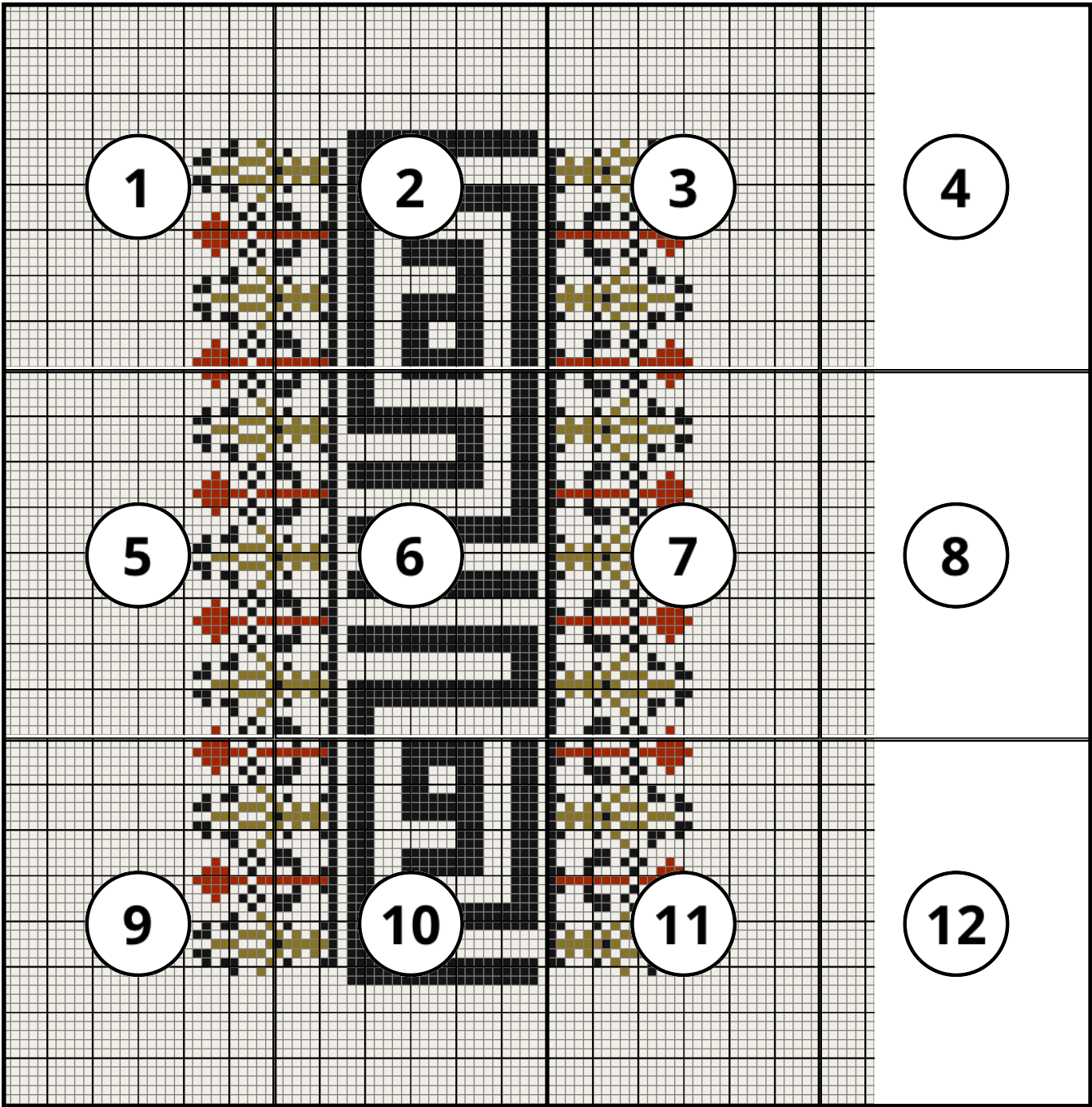
81			J			J	J		J	J	J				J	J	J	J	J	J	J	J	J					J	J	J			81
	☾	☾	☾	☾	☾	☾	J		J	J	J				J	J	J	J	J	J	J	J	J					J	J	J			
			J			J	J		J	J	J				J	J	J	J	J	J	J	J	J					J	J	J			
	J	J	J				J		J	J	J				J	J	J											J	J	J			
85	J	J					J		J	J	J				J	J	J											J	J	J			85
							J		J	J	J				J	J	J											J	J	J			
		J				J	J		J	J	J				J	J	J	J	J	J	J	J	J					J	J	J			
	☾		☾		☾		J		J	J	J				J	J	J	J	J	J	J	J	J					J	J	J			
	J	☾	☾	☾	☾	J	☾		J	J	J				J	J	J	J	J	J	J	J	J					J	J	J			
90	☾		☾		☾		J		J	J	J																	J	J	J			90
		J				J	J		J	J	J																	J	J	J			
							J		J	J	J																	J	J	J			
	J	J					J		J	J	J				J	J	J	J	J	J	J	J	J					J	J	J			
	J	J	J				J		J	J	J				J	J	J	J	J	J	J	J	J					J	J	J			
95			J			J	J		J	J	J				J	J	J	J	J	J	J	J	J					J	J	J			95
	☾	☾	☾	☾	☾	☾	J		J	J	J																	J	J	J			
			J			J	J		J	J	J																	J	J	J			
	J	J	J				J		J	J	J				J	J	J	J	J	J	J	J	J					J	J	J			
	J	J					J		J	J	J				J	J	J	J	J	J	J	J	J					J	J	J			
100							J		J	J	J				J	J	J	J	J	J	J	J	J					J	J	J			100
		J				J	J		J	J	J				J	J	J	J	J	J	J	J	J					J	J	J			
	☾		☾		☾		J		J	J	J																	J	J	J			
	J	☾	☾	☾	☾	J	☾		J	J	J																	J	J	J			
	☾		☾		☾		J		J	J	J																	J	J	J			
105		J				J	J		J	J	J	J	J	J	J	J	J	J	J	J	J	J	J			J	J	J	J	J			105
							J	J	J	J	J	J	J	J	J	J	J	J	J	J	J	J	J			J	J	J	J	J			
							J	J	J	J	J	J	J	J	J	J	J	J	J	J	J	J	J			J	J	J	J	J			
110																																	110
115																																	115
120																																	120

31 35 40 45 49 50 55 60



	61		65		70		75		80		85		90	
81	J	J		J				J		☾	☾	☾		81
	J	☾	☾	☾	☾	☾	☾	☾		☾	☾	☾	☾	
	J	J		J				J		☾	☾	☾		
	J			J	J	J		J		☾				
85	J			J	J			J						85
	J					☾		J						
	J	J		J		☾		J	J		J			
	J		☾		☾		☾	☾	☾		J	J		
90	J	☾	☾	☾	☾	☾	J	☾		☾	☾	☾		90
	J		☾		☾		☾	☾		J	J			
	J	J		J		☾		J	J	J				
	J					☾		J						
	J			J	J		J							
95	J	J		J				J		☾	☾	☾		95
	J	☾	☾	☾	☾	☾	☾	☾		☾	☾	☾	☾	
	J	J		J				J		☾	☾	☾		
	J			J	J	J		J		☾				
100	J					☾		J						100
	J	J		J		☾		J	J	J				
	J		☾		☾		☾	☾	☾		J	J		
	J	☾	☾	☾	☾	J	☾		☾	☾	☾			
105	J		☾		☾		☾	☾		J	J			105
	J	J		J		☾		J	J	J				
					☾			J						
110														110
115														115
120														120
	61		65		70		75		80		85		90	





DMC Stranded (D)



D310
Black
Stitches: 1,787 - Skeins: 1



D831
Golden Olive MD
Stitches: 350 - Skeins: 1



D918
Red Copper DK
Stitches: 264 - Skeins: 1