

LAVA PEBBLES



ODS07-B46
Black lava pebble
Size Dia. 1.6" - 2.4"



ODS07-B68
Black lava pebble
Size Dia. 2.4" - 3.1"



ODS07-R46
Red lava pebble
Size Dia. 1.6" - 2.4"

Product Description:

- Sourced from lava fields
- Recommended purchased with fire features together
- Tumbled to create a more uniform shape and unique look



NATURAL GAS CONVERSION KIT

OCK45-NG01
For 45,000 BTUs Compatibility



Product Description:

- Convert your propane gas unit to run on natural gas
- It must be installed by a qualified installer or gas technician

BUILT-IN BURNER KIT



Natural gas item No.: BBK01NG
Propane item No.: BBK01LP

Product Description:

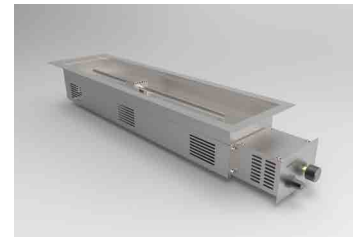
- Body construction: Stainless steel
- Burner size: Dia.12"
- Burner construction: 16 gauge, 304 stainless steel
- Control system: Push button spark ignition
- Maximum heat output: 60,000 BTUs
- Certification: CSA Certified
- Media: 19.8 lbs lava rock (included)
- Stainless steel lid included
- Warranty: 1 year



Natural gas item No.: BBK02NG
Propane item No.: BBK02LP

Product Description:

- Body construction: Stainless steel
- Burner size: Dia.12"
- Burner construction: 16 gauge, 304 stainless steel
- Control system: Push button spark ignition
- Maximum heat output: 60,000 BTUs
- Certification: CSA Certified
- Media: 19.8 lbs lava rock (included)
- Stainless steel lid included
- Warranty: 1 year



Natural gas item No.: BBK03NG
Propane item No.: BBK03LP

Product Description:

- Body construction: Stainless steel
- Burner size: Length 30"
- Burner construction: 16 gauge, 304 stainless steel
- Control system: Push button spark ignition
- Maximum heat output: 60,000 BTUs
- Certification: CSA Certified
- Media: 19.8 lbs lava rock (included)
- Stainless steel lid included
- Warranty: 1 year

FID#	Product specification				Package specification			
	L(inch)	W(inch)	H(inch)	Weight(lb)	L(inch)	W(inch)	H(inch)	Weight(lb)
BBK01	20.3	20.3	6.5	33.2	31.9	22.8	9.1	39.4
BBK02	24.3	20.3	6.5	34.8	38.6	22.8	9.1	42.0
BBK03	43.5	11.3	6.5	40.7	49.6	16.9	9.1	47.5