

Revugu – Adjustable Side Skirts Installation Guide



What's in the box:

1. 2pc Front Door Side Skirts
2. 2pc Rear Door Side Skirts
3. 12pc Black Push Pins
4. 3M double-sided tape (attached on the side-skirts)

****Before Installation please clean the area where the side skirts will be installed****

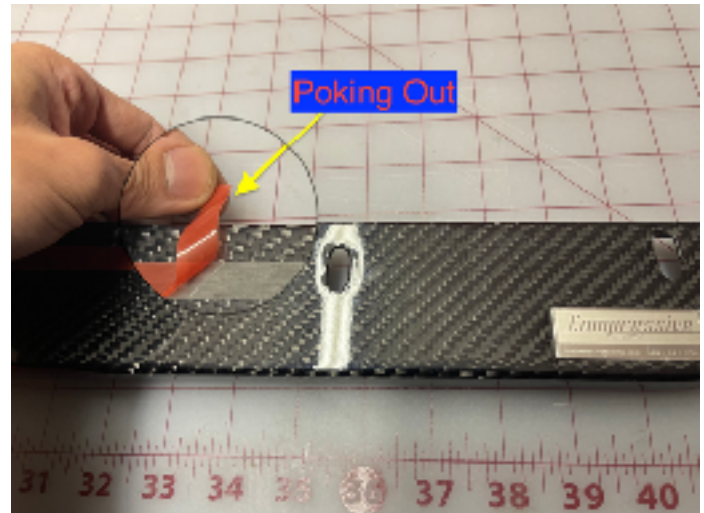
Front side skirts diagram*

- Push Pin Pits
- Passenger Side
- Driver Side
- 3M double sided tape in RED

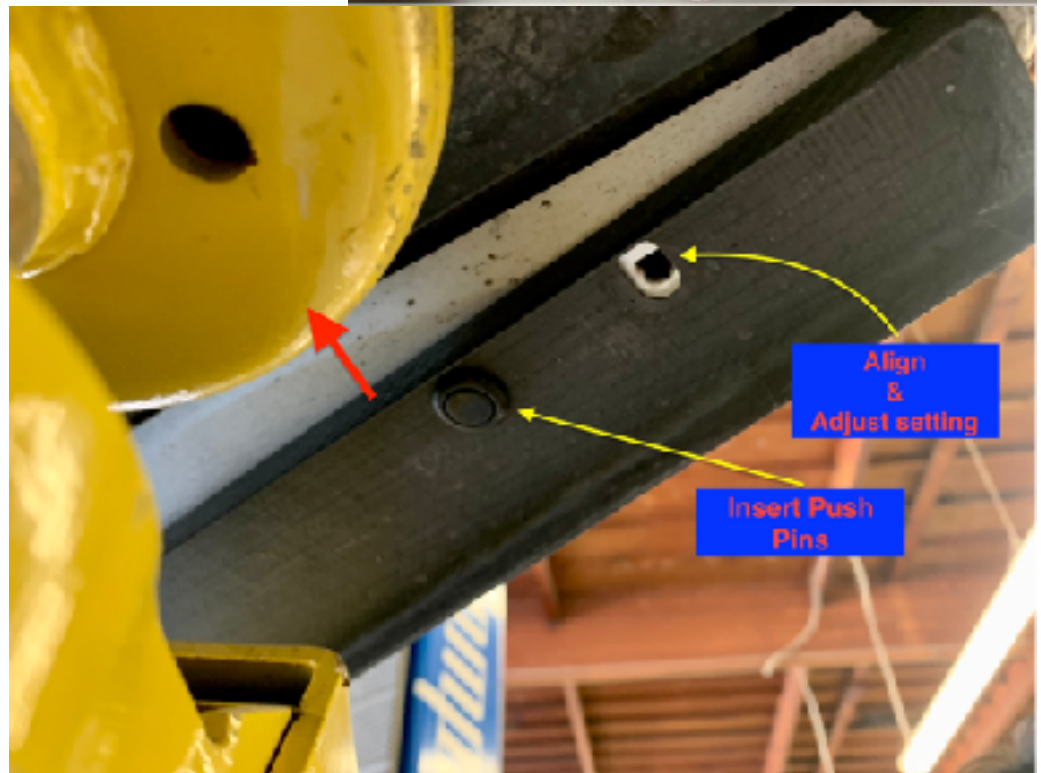


Front Side Skirts Installation:

1. *Align* Push Pin Pits onto existing holes under the door.
2. *Peel* the corner of 3M double sided tape
 - ****peel ONLY the corner on both end for this step****
 - ****The purpose of this step is to have the RED film poking out** to prepare for the next step (step 3)



3. *Insert* Push Pin & *adjust* side skirt to desire setting.



Note: RED arrow represents the red film poking out.

4. *Peel off* red film on 3M double sided tape entirely to secure Revugu Adjustable Side Skirts.

Rear side skirts diagram

- Push Pin Pits
- Passenger Side
- Driver Side
- 3M double sided tape in RED



*****Repeat the process of the front side skirt installation*****

- Align
- Peel Out
- Insert & Adjust
- Peel Off