

XTi-DEFLECTOR

INSTALLATION INSTRUCTIONS

TOOL LIST

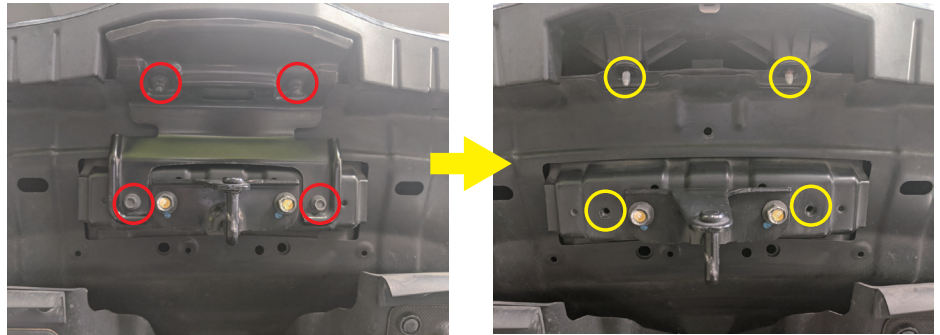
1. 8mm wrench
2. Phillips screwdriver
3. Panel popper tool (Plastic)
4. Tape (for positioning)

HARDWARES INCLUDED :

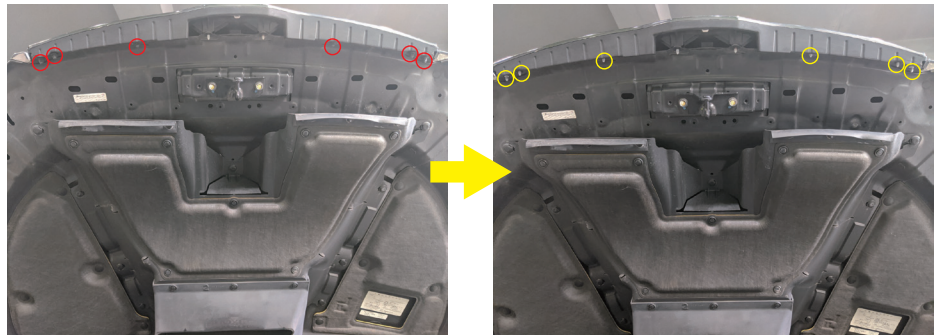
1. Alcohol Prep Pad x1
2. 3M protecting film x6
3. Bug-shield supporting stands (Long) x2
4. Bug-shield supporting stands (Short) x4
5. Supporting clip x6
6. Washer x6
7. Screws x6
8. Supporting dots (adhesive applied) x2



Remove 4 bolts on the hood bracket.
(Use 8mm wrench)



Remove 6 bolts inside the upper grill.
(Use 8mm wrench)



Remove the upper grill.
(Use plastic panel popper to assist)



XTi-DEFLECTOR

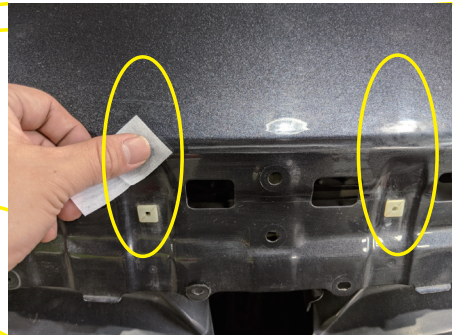
Remove 2 screws on the upper grill.
(Use Phillips screwdriver)



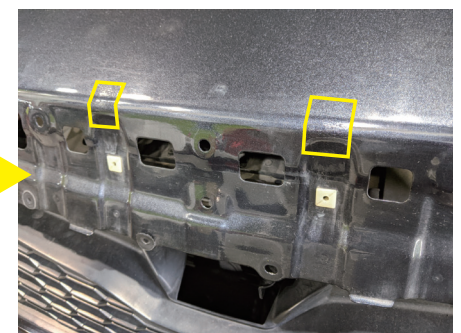
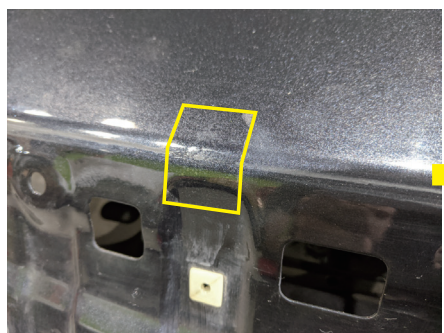
Remove the upper grill frame.
(Use plastic panel popper tool)



Use the Alcohol prep pad to clean the surface
for 3M film. (Need to use the prep pad again
later, do not throw it away)

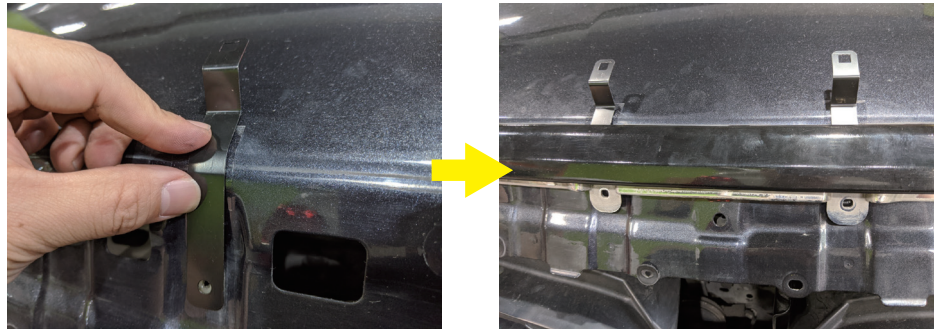


Apply the 3M protecting film to the 2 positions.

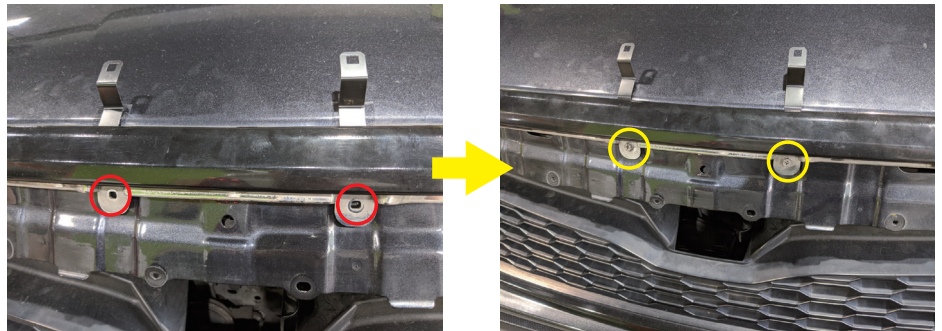


XTi-DEFLECTOR

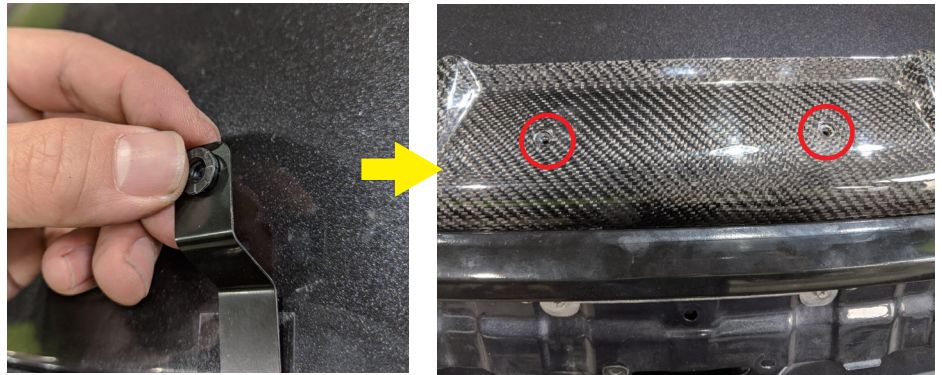
Apply the 2 long supporting stands on the 3M protecting film, and cover it with the upper grill frame. Pop the grill frame back into place.



Put the 2 screws of the upper grill frame back, tighten them with the supporting stands beneath it.



Apply the Clip on the supporting stands. Push the Clip into the hole on the stands.

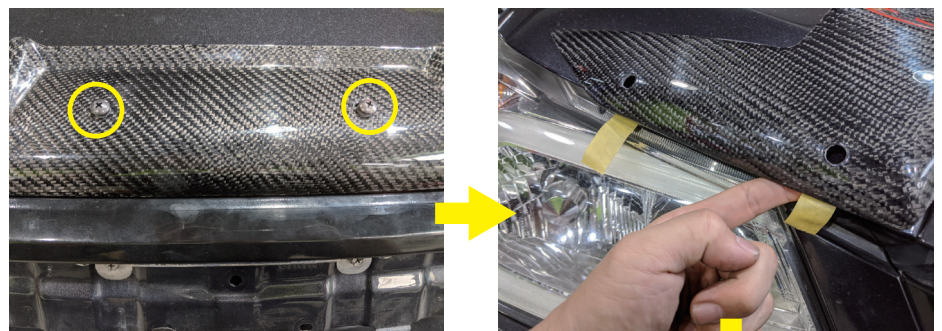


Put the Bug-shield on, and check if the two center holes line up correctly.

Put the screws on, to hold the bug-shield still. (Not too tight)

Use tape to mark the position under the screw holes of the bug-shield.(2 left, 2 right)

These are where the rest of the 3M protecting film should be applied.

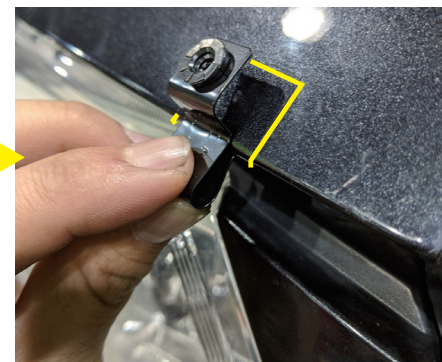
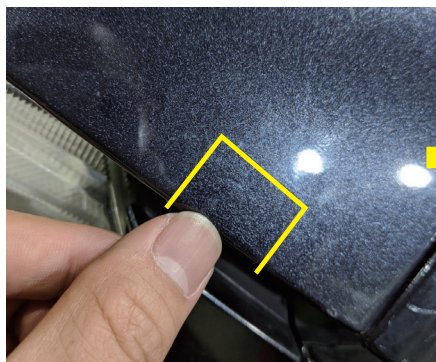


XTi-DEFLECTOR

Remove the bug-shield, and use the Alcohol Prep Pad again to clean the surface



Apply the 3M protecting film to the 4 positions. Then apply the 4 short supporting stands on the same positions.



The 6 supporting stands should look like the image to the right, after installation.

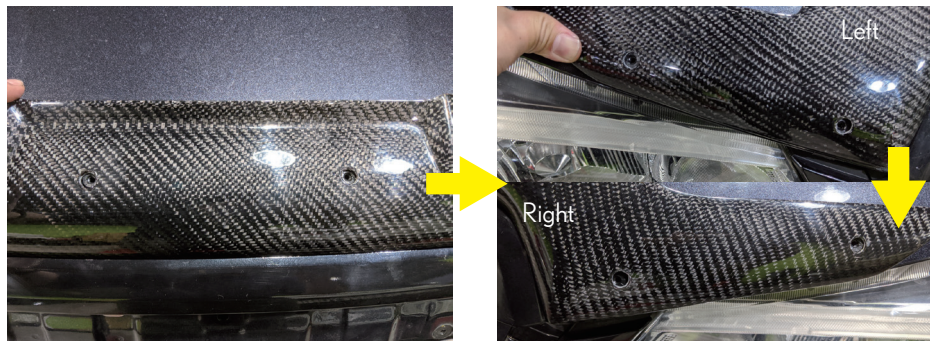


Put the supporting dots under the screw holes of the two supporting stands, and center them as shown on the right image. It does not need to touch the supporting stand, as it will work as an extra support during strong winds gusts only.



XTi-DEFLECTOR

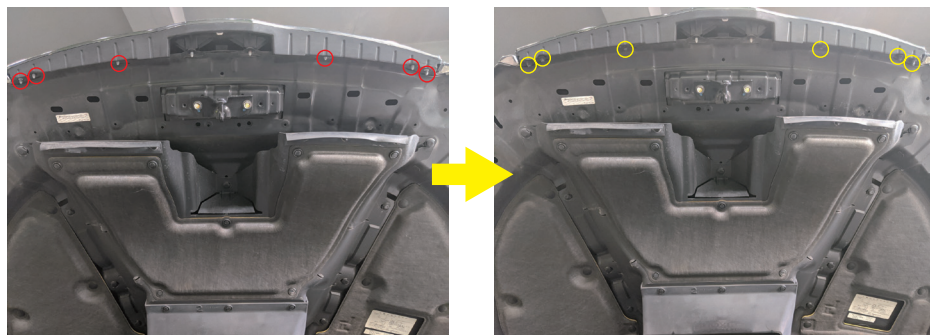
Put the bug-shield back on, and check if all the 6 screw holes line up correctly. Once they are lined up, tighten the center two screws first, then the remaining 4 screws.



Put the upper grill back on.



Put the 6 bolts back on. (Use 8mm wrench)



Put the hood bracket and the 4 bolts back on. (Use 8mm wrench)

