

Package Contents and How to Wear

▶ What's Included



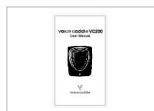
VC200



Box



USB Cable



User Manual



Ball Marker

▶ Sold Separately



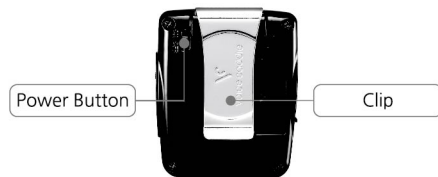
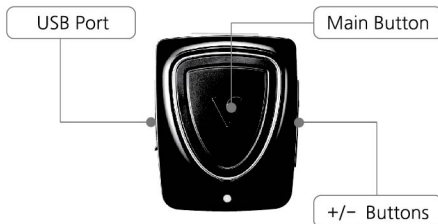
Power Adaptor

▶ How to Wear



Getting Started (1)

▶ Device Overview



Getting Started (2)

▶ Power ON/OFF

Turn the 'ON/OFF' power switch on back of the device.

▶ **"Let's go, enjoy your game with Voice Caddie. The remaining battery is 00 percent."**

▶ **Once the power is 'ON,' your VC200 will automatically start searching for GPS and recognize the golf course.**

▶ **"Golf Course is detected. Please move onto the tee box."**

* Prior to each use, please allow approximately two minutes to sync the satellites.

▶ Measuring Distance to the Green

Press the 'Main Button' to measure the distance to the center of the green.

▶ **"Hole number (1-18), 000 yards/meters left to the green."**

* VC200 measures the direct distance from wherever the player stands to the center of the green.

* The measurement does not account for external conditions including, but not limited to, weather, wind, and elevation.

▶ Distance Guidance near the Green

VC200 stops the distance guidance when you are less than 15 yards from the green.

▶ **"Hole number (1-18), less than 15 yards/meters left."**

▶ Measuring Shot Distance

Press and hold the 'Main Button' for 2 seconds at the starting point to select the measurement.

▶ **"Measuring the shot distance."**

Press and hold the 'Main Button' for 2 seconds again at the desired ending point to complete the measurement.

▶ **"The shot distance is 00 yards."**

Getting Started (3)

▶ Select Units of Measurement (Yard/Meter)

Press and hold the '+' button for 2 seconds.

▶ **"Yard/Meter Selected."**

▶ Changing Holes Manually

If your VC200 locates the incorrect hole number, you may manually select the desired hole number.

1. Press and hold the '+' and '-' buttons simultaneously for 2 seconds

▶ **"Changing holes."**

2. Next, select the desired hole number using the '+' or '-' button.

▶ **"Hole has been changed. Hole number (1-18)."**

▶ Select Left/Right Green

Press and hold the '+' button for 2 seconds.

▶ **"Left/Right green selected."**

* This feature only applies to the courses that have two greens per hole.

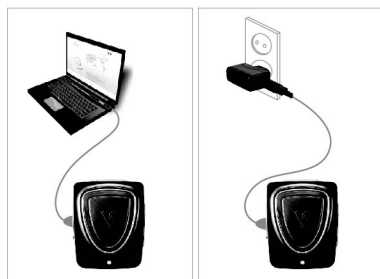
▶ Volume Control

Using the '+' or '-' button, adjust the volume to your desired level (1 to 7).

Charging

▶ Charging

Connect your VC200 to a computer using the USB Cable provided or to a power outlet using the Power Adaptor(sold separately).



* VC200 can be charged in either 'ON' or 'OFF' position.

▶ Key Indicators

Red light: Charging

Green light: Fully charged

Charging time: Approximately 2 hours

Battery life: Approximately 9 hours

* In the areas with poor satellite reception, the battery life may be reduced.

Voice Caddie Manager

▶ Updating firmware, course information, or changing voice language options

1. Visit Voice Caddie website, www.voicecaddie.com
2. Download the VC Manager software from the Golf Course Update page under Support menu.
3. Connect your device to your computer/laptop using the USB Cable provided.
4. Start the VC Manager to update firmware, course information, or to change voice language options.

▶ Supported languages

English, Korean, Chinese, Japanese, French, Spanish, Italian, Swedish, Norwegian, and German

* Visit www.voicecaddie.com for more information.

Warranty

Terms and Conditions:

Voice Caddie warrants its product against defects in materials and workmanship for a period of one year from the date of original retail purchase. If a defect exists, at its discretion Voice Caddie will: (1) repair the product at no charge; (2) exchange the product with a product that is functionally equivalent to the original product. Voice Caddie shall have no obligation to repair, or replace until the product is received and evaluated by Voice Caddie. This warranty does not apply: (1) to damage caused by accident, abuse, misuse, misapplication, or damage caused by non-Voice Caddie product or peripherals; (2) to damage caused by service performed by anyone who is not a Voice Caddie Authorized Service Provider; or (3) to a product or part that has been modified without the written permission of Voice Caddie.

Warranty Procedures:

Email us at rma@voicecaddie.com to receive a return merchandise authorization (RMA) number prior to returning any merchandise. A copy of the original purchase receipt is required to verify the date of purchase. If a return is approved, please send the unit along with a copy of the original purchase receipt and the RMA number marked clearly on the outside of the package. Shipping fees accrued for returns are responsibility of the sender.



voice caddie

Tel: 888-939-3978

E-mail: contact@voicecaddie.com

www.voicecaddie.com

voice caddie VC200 User Manual



voice caddie