

# G3

## User Manual



**VOICE CADDIE**

[www.voicecaddie.com](http://www.voicecaddie.com)

# Major Buttons

---

## ► Main Screen (Watch Mode)

P : Back Light

LP : Power ON/OFF

P : Move up

P : OK

P : Move to Menu /  
Move to Previous  
Step

P : Move down



※ P : Short-press (0.5 Seconds)

LP : Long-press (2 Seconds)

# Major Buttons

---

## ► Golf Mode

P : Back Light  
LP : Exit Mode



P : Move to Green /  
Yardage View  
LP : Select left/  
right green

P : OK  
LP : Display  
watch face

P : Measure  
driving distance  
LP : Correct score

P : Move to Green /  
Yardage View  
LP : Change unit

※ P : Short-press (0.5 Seconds)  
LP : Long-press (2 Seconds)

# Major Buttons

---

## ► Fitness Mode

P : Back Light

LP : Exit Mode

P : Change item  
(speed/pace)

P : OK  
LP : Display  
watch face

P : Initialize gauge  
or go back

P : Change unit  
(mile/km)



※ P : Short-press (0.5 Seconds)

LP : Long-press (2 Seconds)

# Time/Date Setting


---

## ► Automatic Setting (Outdoor Only)

Menu > Golf Mode(  ) or Fitness(  ) Mode


- Select Golf Mode or Fitness Mode to automatically set 'Time/Date' based on GPS signals

## ► Manual Setting (Outdoor / Indoor)

Menu > Setting(  ) > Date/Time > 'Time'

- Set 'Time' with 'UP', and 'DOWN' buttons
- Click 'OK' to save the setting



Menu > Setting(  ) > Date/Time > 'Date'

- Set 'Date' with 'UP', and 'DOWN' buttons
- Click 'OK' to save the setting



# Setting

---

## ► Weight

Menu > Setting( ⚙ ) > Unit > 'Weight'

- Set 'Weight' with 'UP', and 'DOWN' buttons
- Long-press 'DOWN' button to change unit



## ► Reset

Menu > Setting( ⚙ ) > About > 'Factory Reset'

- All data settings in product are reset

# Recharging & Update

---

## ► How to Recharge

This product can only be recharged by using the dedicated charging cable provided



Charging



Charging completed

## ► Update

How to update golf course information and program

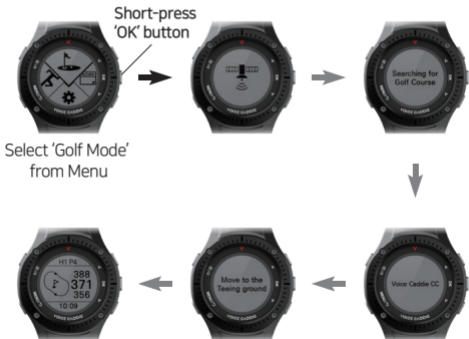
1. Go to Voice Caddie website ([www.voicecaddie.com](http://www.voicecaddie.com))
2. Go to Support > Voice Caddie Manager (VCM) > then install "G3"
3. Run the program, connect the product to your computer using dedicated charging cable and update

# Enter Golf Mode

---

## ► Entering Golf Mode

Select 'Golf Mode( 🏌️ )' to automatically recognize holes based on GPS signals



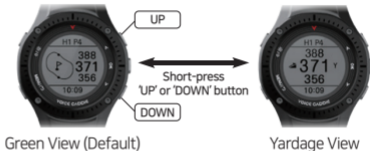


# Golf Mode Distance Guide

---

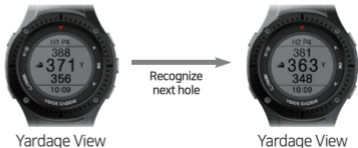
## ► Green View / Yardage View

Short-press 'UP' or 'DOWN' button to switch



## ► Changing Default Page

In Golf Mode, if you select 'Yardage View', the default page changes to 'Yardage View'



# Green View

---

## ▶ Active Green Front/Back

Depending on the location of golfer, provides front / back distance to green and remaining distance to pin



\* The image of the 'Green View' can be different depending on the region and the golf course situation.

## ▶ Switching Between Left/Right Green in Two Green

Long-press 'UP' button to switch



# Change Unit

---

## ► Changing Unit

In Golf Mode, long-press 'DOWN' button to switch between units (yard, meter)

### Green View



yard

Long-press  
'DOWN' button



meter

After  
5 Seconds



### Yardage View



yard

Long-press  
'DOWN' button



meter

# Measuring Driving Distance / --- Current Time Popup

## ► Measuring Driving Distance (Manual)

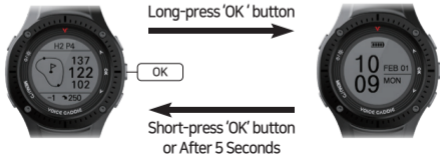
- ① At the position where you want to measure driving distance, short-press 'MENU' button
- ② Measure driving distance from the point where you pressed 'MENU' button
- ③ When hole is changed, driving distance measuring mode automatically ends

\* If needed, short-press 'MENU' again to reset driving distance measuring



Driving distance  
: 250 yards

## ► Current Time Popup



# Scoring / Correct Score

Available only if 'Scoring' is turned 'ON'  
\* Menu > Setting( ⚙ ) > 'Scoring' > 'ON'

## ► Scoring

Automatically displays scoring popup at hole out



## ► Correct Score

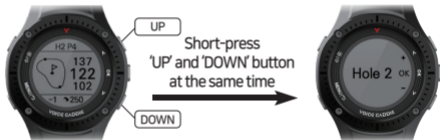
- Long-press 'MENU' button, and select hole to correct
- Short-press 'MENU' button again to return to Golf Mode

# Changing Hole / Exit Golf Mode

---

## ► Changing Hole (Manual)

Short-press 'UP' and 'DOWN' buttons at the same time to manually change hole



## ► Exit Golf Mode

- Long-press 'POWER' button to Exit Golf Mode
- You can check score and workrate at the end
  - Available only if 'Scoring' is turned 'ON'
  - \* Menu > Setting( ⚙ ) > 'Scoring' > 'ON'

# Correcting & Deleting Score Card

---

## ▶ Menu > 'Score Card( )'



- ① From golf round history, select the course to correct by pressing 'OK'

\* How to delete golf round history

→ Select course, and long-press UP' button



Total Score

- ② Scroll 'UP', and 'DOWN', then select the hole to correct by pressing 'OK'



Total Score


- ③ Scroll 'UP', and 'DOWN' to correct score, then save by pressing 'OK'

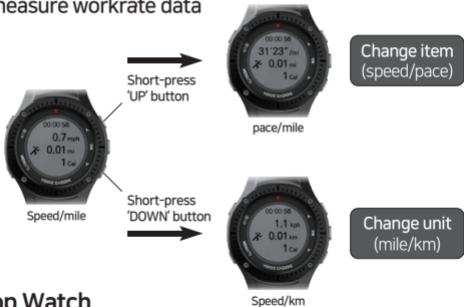
\* Up to 200 golf round histories are saved

# Fitness Mode


---

## ► Walking / Running, Cycling

Menu > 'Fitness Mode(  ) > 'Walking / Running'  
or 'Cycling' > Automatically activate GPS,  
then measure workrate data



## ► Stop Watch

Menu > 'Fitness Mode(  ) > 'Stop Watch'  
· Press 'OK' to shift between Start, Stop and Reset



## Caution

---

This device complies with Part 15 of the FCC Rules. Operation is subject to the following two conditions: (1) this device may not cause harmful interference (2) this device must accept any interference received, including interference that may cause undesired operation.

This equipment has been tested and found to comply with the limits for a Class A digital device, pursuant to part 15 of the FCC Rules. These limits are designed to provide reasonable protection against harmful interference when the equipment is operated in a commercial environment. This equipment generates, uses, and can radiate radio frequency energy and, if not installed and used in accordance with the instruction manual, may cause harmful interference to radio communications. Operation of this equipment in a residential area is likely to cause harmful interference in which case the user will be required to correct the interference at his own expense.

Any changes or modifications not expressly approved by the party responsible for compliance could void the user's authority to operate this equipment.

## Caution for use

---

1. The time required to capture GPS satellite signals while in golf or fitness mode may vary depending on the environment (weather, topography)
  2. When the battery is fully charged, the Golf Mode is available for about 11 hours and the Watch Mode for about 30days. The battery's usage time may be reduced during rounds in cold weather and in areas where satellite reception is poor
  3. It is recommended to turn power on once outside and ready to begin your round to increase product usage time.
  4. Do not leave the product in vehicles in hot temperatures or humid places as damage may occur.
  5. You can measure a more precise amount of calories burned by entering your weight correctly during exercise measurements.
-

# Product Warranty

---

One Year Limited Warranty

---

Voice caddie warrants this hardware product against defects in materials and workmanship for a period of one year from the date of original purchase. If a defect exists, at its option Voice Caddie will (1) repair the product at no charge, (2) exchange the product with a product that is new or like-new and is at least functionally equivalent to the original product, or (3) refund the purchase price of the product. Voice Caddie shall have no obligation to repair, replace or refund until the customer returns the defective product to Voice Caddie.

This warranty does not apply : (1) to damage caused by accident, abuse, misuse, misapplication, or non-Voice Caddie products; (2) to damage caused by service performed by anyone who is not a Voice Caddie Authorized Service Provider; or (3) to a product or part that has been modified without the written permission of Voice Caddie. For more information on Voice Caddie's warranty and return policy, please visit [www.Voicecaddie.com](http://www.Voicecaddie.com)

---

# Product Warranty

---

Product Name	VOICE CADDIE G3
Serial Number	
Date of Purchase	
Supplier	
Full Name	
Phone	
Warranty Period	<b>1 year from purchase</b> (6 months for battery and other components)

## Responsible Party – U.S Contact Information

Street Address : 13951 Valley View Ave

City, State : La Mirada, CA | Postal Code : 90638

Country : United States | Telephone Number : 1-888-939-3978

Internet Contact Information : [support@voicecaddie.com](mailto:support@voicecaddie.com)

Website : [www.voicecaddie.com](http://www.voicecaddie.com)