

Register and Save!

waterpik® ION
waterflosser®

Congratulations!

You are now on your way to better oral health!

Save Over \$50!

Register at [waterpik.com/registration](https://www.waterpik.com/registration) to receive exclusive discount code.

Offer includes
50% off
your next order
of assorted
tips + tip
storage case.



We'd love to hear from you!

Connect with Us
@Waterpik



Call: 1-800-525-2774
www.waterpik.com

Waterpik® 14 Day Challenge App

Make water flossing a habit! Try our new mobile App for the best water flossing experience.



©2021 Water Pik, Inc.
FN 20028198-FAB

This device is compatible with voltages of 100-240 VAC, 50-60 Hz



Register and Save

Register your product at [waterpik.com/registration](https://www.waterpik.com/registration) to receive over **\$50** in savings.



Write a Review

Creating innovative Waterpik® products that inspire better oral health is our passion. We invite you to leave a review by sharing your thoughts on Waterpik® ION on [waterpik.com](https://www.waterpik.com) or the retailer's website.



We're Here to Help

We hope you are loving your new Water Flosser. If for any reason you are not satisfied or have any product questions, please contact our fast and friendly Customer Service Team based in Fort Collins, Colorado.

Waterpik® ION Water Flosser is backed by a 3-year manufacturer's warranty.

Call: 1-800-525-2774
Monday-Friday
7 am - 5 pm MST



Chat or E-mail
service@waterpik.com



**Quick Start
Guide Inside!**



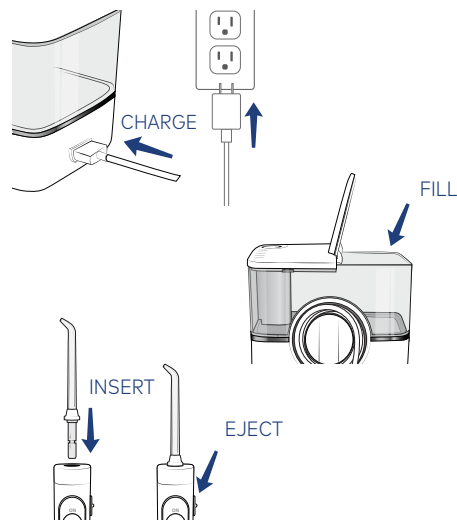
Quick Start Guide

1 GETTING STARTED

Connect the charger cord to the USB power supply. Plug the power supply into the wall outlet and connect magnetic charger to unit and charge for approximately 5 hours.

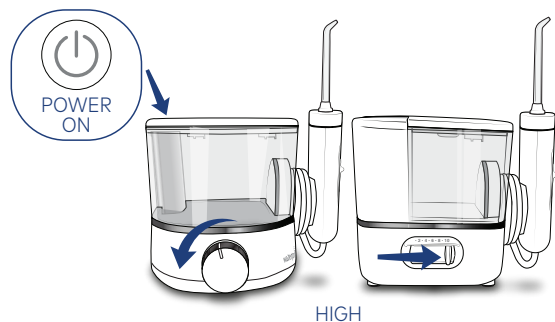
Remove the reservoir and fill with water. Replace reservoir and press down firmly.

Insert tip into the Water Flosser handle, pressing down firmly until it clicks into place.



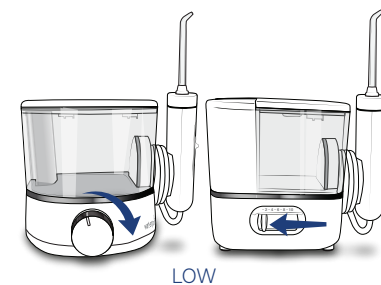
2 PRIMING UNIT (FIRST TIME USE ONLY)

Set pressure control on base to high (pressure setting No.10), point the handle and tip into sink. Turn power and water ON until water flows from the tip. Turn both power and water OFF.



3 ADJUSTING THE PRESSURE SETTING

Turn the pressure control on the base of the unit to the lowest setting (pressure setting No.1) for first-time use. Gradually increase pressure over time to the setting you prefer – or as instructed by your dental professional.

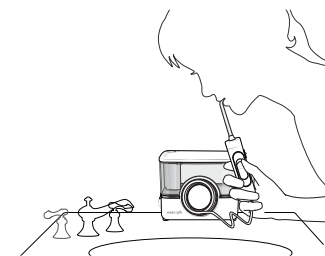


4 USING THE WATER FLOSSER

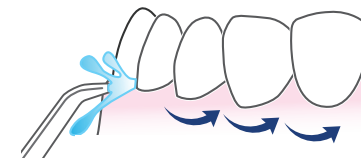
With unit OFF, place tip in mouth. Start on low pressure. Turn power ON and water ON. Adjust pressure to your liking.

Lean over sink. Close lips enough to prevent splashing.

TIP: TO AVOID MESS KEEP TIP IN MOUTH WHILE UNIT IS ON.



5 Aim water at the gumline at a 90 degree angle. Follow the gumline and pause briefly between teeth.



NEED HELP?

Visit Waterpik.com/WelcomeWF

To watch a How To Video and find additional product support.

Call Us! 1-800-525-2774

Canadian customers please visit www.Waterpik.ca for more information.