



NOLZUR'S MARVELOUS PIGMENTS
OFFICIAL PAINTING SERIES



HOW TO PAINT MINSC & BOO

DUNGEONS & DRAGONS®



THE
ARMY
PAINTER

©GF9 2018, TM & ©Wizards. ©The Army Painter 2018. All rights reserved.

INTRODUCTION

The official Dungeons & Dragons™ Paint Series from The Army Painter offers collectors and painters the perfect selection of userfriendly waterbased paints.

Each pot in the Monsters Paint Set is painstakingly selected to match the creatures from the Monster Manual offering you the range of paints you need to paint up most of your encounters.



"TAKE HEART FELLOW ADVENTURERS, FOR YOU HAVE CURRIED THE FAVOR OF BOO, THE ONLY MINIATURE GIANT SPACE HAMSTER IN THE REALM!"
MINS -

WORK AREA SET-UP



FOR THIS TUTORIAL YOU WILL NEED:

- BRUSHES
- WATER
- MIXING PALETTE
- PAINTS
- NAPKINS

Check out our online video tutorials here:

 YouTube

 SUBSCRIBE



PRODUCTS USED IN TUTORIAL



75001 Adventurers Paint Set



75002 Monsters Paint Set

The colours in the Adventurers Paint Set is great for getting your mini on the table - if you want a greater look, the extra colours of the monsters paint set is a great add on.



BRUSHES



D&D Starter Brush
75001 Adventurers Paint Set



D&D Basecoat Brush
75003 Nolzur's Marvelous Brush Set



D&D Detail Brush
75003 Nolzur's Marvelous Brush Set



D&D DryBrush
75003 Nolzur's Marvelous Brush Set



LEVEL 1: STEP 0: PRIMING

Level 1

All miniatures need a primer for the acrylic Warpaints to stick to the models! You might find leftovers of oily release agents from the production injection moulds and if you skip the priming stage you will find the Warpaints struggles to adhere to the miniature and acts like water on oil.



In the D&D Adventurers paint set you'll find the WP **GREY PRIMER** – a neutral grey colour that acts as an impeccable canvass for all colours. It can be advantageous to use the D&D **DRYBRUSH** or another big brush like the **MONSTER BRUSH** for this job.

NOLZUR SAYS:

'My pigments are magical - non-toxic, water based acrylics. But make no mistake - if you let them dry on you they are there to stay...'



- *Wear appropriate clothes*
- *Use warm water and soap to get the paint off*

You only need a very thin coat of primer on the miniature since you don't want to ruin the intricate details. You might want to thin the **GREY PRIMER** with a few drops of water to help the flow and to prevent you giving too thick a coat. Leave to dry for 5 minutes – time to make yourself a cup of coffee and plan out a colour scheme...

If you are painting more than a few miniatures at a time, we strongly recommend using Colour Primer sprays to prime your miniatures. The advantage of sprays is a smoother, more even finish in a manner of seconds. Add to that a choice of 24 Colour Primer colours allowing you to prime miniatures in a time-saving base colour. For example, if you were painting a party of tomb skeletons, you might want to consider using Colour Primer: Skeleton Bone as your primer, saving a lot of painting time as all bone areas are halfway done in the priming stage.



PRIMED MINSC & BOO

The Grey Primer dries in a manner of minutes – just time to plan out what colour you want to paint Minsc and Boo, are you thinking a desert theme or forest hunter ...? In this guide we have chosen a Red, Black and Metallic palette.

LEVEL 1: STEP 1: BASECOAT

Level 1

With the primer all dry it is time to add some paints to the Minsc miniature. For this you'll need the Warpaints from the Adventurers set, your D&D STARTER BRUSH, a glass of clean water, a mixing palette (like an old flat tile) and some tissue paper for drying your brushes. The Army Painter Warpaints are all waterbased, non-toxic and extremely user friendly. The smooth Warpaint is easy to apply, doesn't wear out your brushes. It dries in minutes meaning you don't have to wait for the paint to dry and can keep painting.

1A

We started with Minsc's skin colour using **FLUMPH PINK**. You want a good even coverage, so you might want to give two thin coats. Don't worry too much if you spill onto other areas of the miniature – these will be covered in paint.



BASECOATED MINSC & BOO

NOLZUR SAYS:

“Two thin coats are better than one thick coat to keep the fine details of the miniature intact.”



AFTER EACH PAINT, MAKE SURE YOU RINSE YOUR BRUSHES VERY CAREFULLY IN CLEAN GLASS OF WATER AND DRY THE BRISTLES ON A PIECE OF TISSUE PAPER BEFORE STARTING ON YOUR NEXT COLOUR.



“All metallic Warpaints come with a black lid, making the paints easy to identify.”



1B



The next colour to use is the metallic **MITHRAL SILVER** for the sword, the scale armour, the arm greaves and the leg plates. We also painted the belt buckle and his ear-ring trying to be as neat as possible. We used the D&D **STARTER BRUSH** included in the Adventurers Set, but a thinner brush would make your life easier when it comes to painting the small details; for instance, the D&D **PRECISE DETAIL BRUSH** from the **D&D BRUSH SET**.

Be careful - do not to drown your miniature in paint. Better apply two thin layers of basecoat.



We painted the cloak with **DRAGONFIRE RED**. You'll find that two coats of Dragonfire Red give a strong and vibrant basecoat. By now many of the parts of the Minsc miniature has been basecoated and you need to take care not to get paint onto the already painted areas.

Try to be as neat as you can – but if the inevitable should happen, wait for the paint to dry and go over the mistake using the previous colour. Now Minsc is starting to come to life.

1C



BASECOATED CLOAK



1D

The trousers were painted **ABYSSAL BLACK**, again taking extra care not to get black onto the cloak or the leg plates.



BASECOATED TROUSERS

We finished off painting all the leather parts with a coat of Bugbear Brown. The boots were straight forward, but for the belts try to be as careful as you can and load only a little paint onto the brush at a time. When you have only a little paint on your brush, the paint dries out very quickly, so you might want to add a tiny bit of water to your paint, in order to have a smooth flow off your brush.

1E



NOLZUR SAYS:

"Should the odd mistake happen and you end up splotching paint onto an already finished area - let the paint dry and simply touch up with the previous colour and fix your mistake."



1H

Now it is time to paint on Minsc's purple tattoo and for this we also need to mix some paints. Two parts **KRAKEN BLUE**, 1 part **DRAGONFIRE RED** and 1 part **LAWFUL WHITE** mixed on our palette and painted onto the miniature as neatly as possible.

Now we shifted our attention to Boo – starting off by painting all of the little critter with **LAWFUL WHITE**. The D&D **STARTER BRUSH** is small enough for most detail work and large enough for the basic work – a good all-round brush.



The fur of Boo is a yellowy-brown that you'll need to mix if you just have the paints from the D&D Adventurers Paint Set.

We used a mix of 3 parts **ANGELIC YELLOW** and 1 part **BUGBEAR BROWN**. Simply mix the paint on your pallet and apply it to the top half of Boo, leaving some of the white paint on his legs and underbelly. Alternatively, you could have used **OTYUGH BROWN** from the D&D Monsters Paint Set.



Stopping at this stage is perfectly OK and if you are new to the painting hobby, you might be very pleased and proud of your result so far and reluctant to risk ruining the miniature by venturing into the expert techniques. But – give it a go – by using a few very simple techniques you can become a black belt of miniature painting in no time.



BASECOATED MINSC & BOO

We finished off the basecoat stage by painting the edge of the base with **ABYSSAL BLACK** and the Minsc & Boo miniature is done!

If you plan to play a lot of games, you'll need to varnish your miniature in order to protect it from the wear and tear of the tabletop gaming (...and the wandering monsters in the deep dungeons). We recommend using either **AEGIS SUIT SATIN VARNISH** spray or the brush-on **WARPAINTS ANTI-SHINE VARNISH**.

NOLZUR SAYS:

"The first time you use a Warpaint after shaking it first, drip the first 4 drops into a tissue - as acrylic medium will always be at the dropper neck flowing out first."



LEVEL 1 MINSC & BOO ARE READY TO PLAY!

It is perfectly all-right to stop at this stage and play out your first encounters. But... let us explore some simple techniques that will take your painting skills to the next level.



OR DO YOU WANT TO TAKE IT TO THE NEXT LEVEL?



LEVEL 2: STEP 2: SHADING

Level 2

Washes are essentially thinned down specialist's paints, designed to create 3D shading to the miniature as the thin wash flows into the deepest crevasses. The Washes are thin and runny and have a consistency of milk, so you need to take care not to splash it onto the entire model or let it run onto unwanted parts of the models.



Washes are thin paint with a lot of fine pigment.

THE ARMY PAINTER

Cap System

White: Paints

Red: Quickshade Washes

Black: Metallics

White: Effects



In the D&D Monsters Paint Set we have 3 different washes and we have used all three on the Minsc & Boo miniature.

Afterwards we covered the whole of Minsc's skin and Boo with **FLESH WASH** – this wash has a light red-brownish pigment perfect to add subtle shading to pale skin tones. We also painted over the purple tattoo.



2B



The first wash we applied was the black **SHADOW WASH**. This was applied onto all the metallic areas and instantly adds depth and realism to the scale armour. Because washes are so thin, they take slightly longer to dry than the normal acrylic paints.

SHADED MINSC & BOO

2C

The rest of the miniature was shaded with the **BROWN WASH** – a fantastic fits-all type of wash, that can work on all colours. We shaded the red cloak, the brown leather and the stone base.



SHADED MINSC & BOO

NOLZUR SAYS:

'Because washes are so thin they take a little longer to dry than your normal Warpaints.'

The washes have really made a difference to Minsc & Boo adding instant 3D shading.

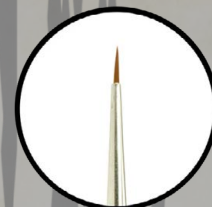
However, it has also darkened the miniature and left us with a dirty and worn feel, unsuitable for our brave hero. In the next stages we will build up the bright colours again with highlights on the raised surfaces.

Level 2

NOLZUR'S MARVELOUS BRUSH SET



Product Code: 75003



BASECOAT DETAIL DRYBRUSH

Get these D&D™ custom made, German quality handmade brushes!

CLICK HERE

LEVEL 2: STEP 3: HIGHLIGHTING

Level 2

In this step we have gone back to each of the basecoat colours from step 2 and repainted parts of the miniature to redefine the strong and vibrant colours.

washes flow into the deepest recesses of the miniature and creates a dark shadow, the aim of the highlight is to paint only on the raised areas of the miniature with a lighter colour.

When highlighting you do the exact opposite of the wash-step. While

3A

The highlighting technique is best visualized on the red cloak. The **BROWN WASH** has settled nicely in the folds of the cloak creating a dark brown shade. We painted the raised folds with **DRAGONFIRE RED**, taking care only to get red paint on the very raised surfaces.



The next colour to highlight was the **MITHRAL SILVER** – again taking care not to get silver onto other parts of the model. We used the drybrushing technique and added a fine highlight on the very tip of the scales on Minsc's armour and the tip of the sword blade.



Using the Flumph Pink on only the raised surfaces we highlighted the skin. For inspiration look at artwork or drawings to see where the light will settle and then try and match that.

For instance, highlight only on the nose, the cheek bones, the top of the ears and the bald top of Minsc's head. Likewise, try only to paint the highlight colour on the top of the fingers – not in between where you like the Flesh Wash shade to stay.



HIGHLIGHTED MINSC & BOO

3D



Following the same pattern, we highlighted the boots and belts with the **BUGBEAR BROWN**.

3E



We redefined the purple mix also used in the basecoat stage and highlighted the tattoo.

3F

Finally, we drybrushed the pavement stones on the base with a 50/50 mix of **LAWFUL WHITE** and **ABYSSAL BLACK**. You could use your standard brush, but we used the specially designed **D&D DRYBRUSH** from the D&D Brush Set. And then we touched up the edge of the base with a fresh coat of **ABYSSAL BLACK**.

And you are finished. Minsc and Boo ready to go monster-bashing in the deep underdark crypts!

If you are happy with the result and want to start gaming, we recommend using either **AEGIS SUIT SATIN VARNISH SPRAY** or the brush-on **WARPAINTS ANTI-SHINE VARNISH** to protect your precious paint job.



HIGHLIGHTED MINSC & BOO



LEVEL 3: STEP 4: MASTERCLASS SECOND HIGHLIGHT

Level 3

If you really want to go to town you can add a more highlights to your miniatures, enhancing the look and 3D feel.

The technique is exactly like what you have just done, now using a brighter colour and painting only the very highest raised areas. The aim is to let some of the first highlight show and only put the second highlight on a smaller area.

This requires a little patience and a fine brush – but give it a go.

To get brighter paints, you can simply mix in a drop **LAWFUL WHITE** to the basecoat colour – or for us lazy painters – you can pick a brighter colour from the 36 additional Warpaints in the D&D Monster Set or from the entire Warpaints range of 124 colours.

For instance; you can mix a 1 drop of **BUGBEAR BROWN** with 1 drop **LAWFUL WHITE** to get a brighter brown for a second highlight of the boots and belts – or you can use **FAIR SKIN** from the D&D Monsters Set.

Here is a chart of the colours we used for the second masterclass highlight:

Using the **PRECISION BRUSH** from the **D&D BRUSH SET** we painted in the eyes. First, we painted the socket with a little thinned down **ABYSSAL BLACK**. Then we painted the eyes with **LAWFUL WHITE**, leaving a line of black showing around the white. And finally – with your most steady hand – dot in the eyes with a spot of **ABYSSAL BLACK**.

Finishing touches

Once dry we gave the Minsc & Boo miniature a thin coat of Aegis Suit Satin Varnish spray top protect the model. And we glued in some Battlefields Highland Tufts and Swamp Tufts to the base with a drop of Super Glue.



LEATHER: FAIR SKIN

TATOO: BEHOLDER PURPLE

CLOAK: RUST MONSTER

TROUSERS: ETHEREAL BLUE

METAL: SILVER DRAGON

SKIN: ROSY SKIN

PAVEMENT STONES: ORC SKIN

JOB DONE!

Level 3

And there you have it, no matter where you stopped in this tutorial, you should now have a table ready mini to be proud of. Here is our final result - Happy painting!



DUNGEONS & DRAGONS®



THE
ARMY
PAINTER

©GF9 2018, TM & ©Wizards. ©The Army Painter 2018. All rights reserved.