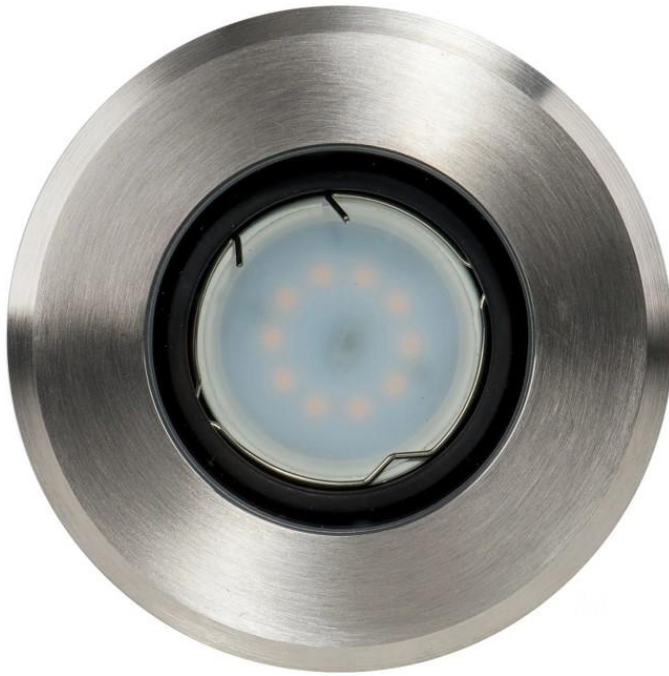


Luta 316 Stainless Steel TRI Colour Adjustable Inground Light MR16 5w



Product Code-	IFL-1825T
Wattage-	5w
Voltage	12v DC
Colour Temperature (k)-	3000K, 4000K, 5500K
Beam Angle-	120°
Lumen output-	270-300
Lamp Base-	MR16
CRI-	80+
Ip Rating-	IP65
Dimmable	No
Mounting Type	Inground
Material-	316 Stainless Steel
Colour-	Stainless Steel
Warranty-	3 Years Replacement

