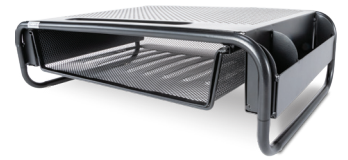
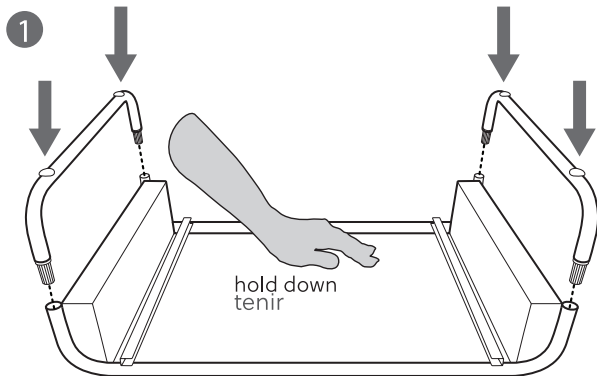
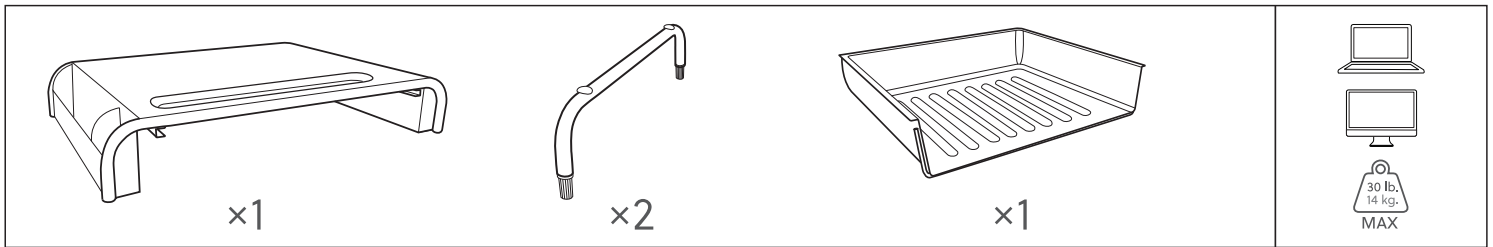


ALLSOP ORGANIZER 5 MONITOR STAND™



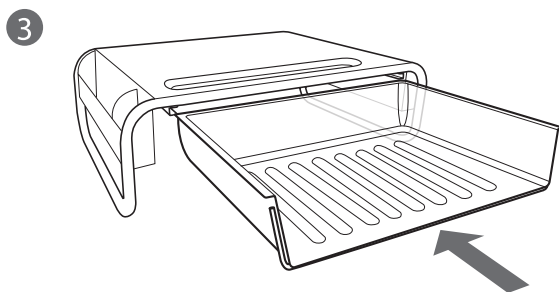
USER GUIDE • GUIDE D'UTILISATION

Rev 031623



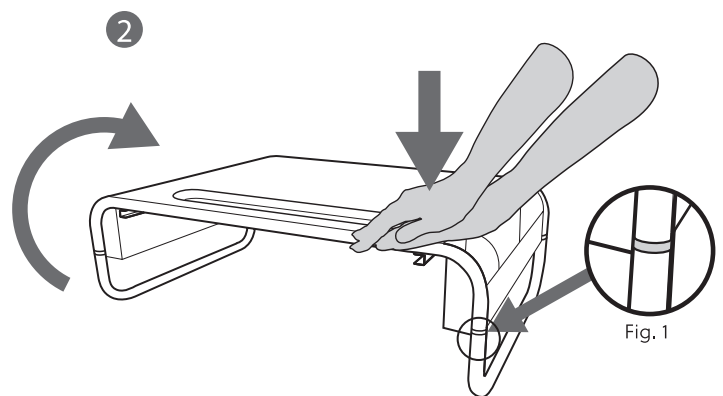
Insert leg connectors into each hole of the upside-down frame. Press down on each connection point until partially inserted.

Insérer les raccords de patte dans chaque orifice sur cadre à l'envers. Appuyer sur chaque point de raccordement jusqu'à ce que les raccords soient partiellement insérés.



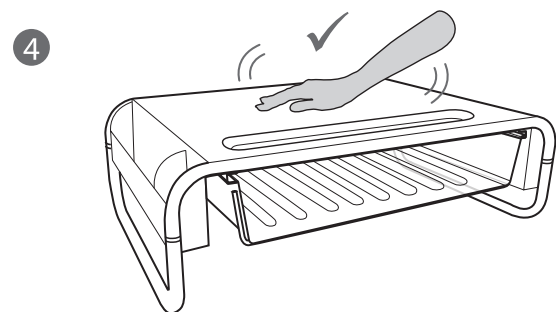
Slide drawer into the slots that are located on the underside of the frame.

Glisser le tiroir dans les fentes situées sous le cadre.



Flip over stand. Using both hands, apply substantial force straight downward on each corner until inserted completely (see Fig. 1).

Retourner le support à l'endroit. Avec les deux mains, exercer une grande force vers le bas sur chaque coin jusqu'à ce que les raccords de patte soient complètement insérés (voir Fig. 1).



Check that your monitor stand is sturdy before use.

Vérifier que le support de moniteur est solide avant de l'utiliser.

ALLSOP®

a family of brands

THANK YOU FOR YOUR PURCHASE!
We want you to be **completely satisfied**.
If you have any questions please contact
our USA-based customer service:

SUPPORT@ALLSOP.COM

1-800-426-4303

For how-to videos, FAQs, and more great products visit our websites:

ALLSOP®
allsop.com

ALLSOP®
HOME GARDEN
allsopgarden.com

di Digital
Innovations

digitalinnovations.com

IYN™
STANDS

iynstands.com

Love our product? Please leave a review!

