

Ultra High Purity Reverse Osmosis

Installing Your Undersink System

Step by Step Installation

1. Taking into consideration ease of maintenance, find a convenient location beneath the benchtop. Using the selftapping screws provided, attach the filter to the cupboard wall (allowing approx 50mm height for changing cartridges). The system can also stand freely on the cupboard base, or even on it's side.
2. **Shut Off the Water Supply** - Locate the ministop valve for the cold water feed line (see Diagram 2).

Close the cold water shut off valve. Turn on the cold water faucet only to assure that the line is completely shut off and drained. (If there is no cold water shut off valve located under the sink, then turn off the main water supply at the entry to the property).

▲ Feeding the system with hot water will damage the membrane.

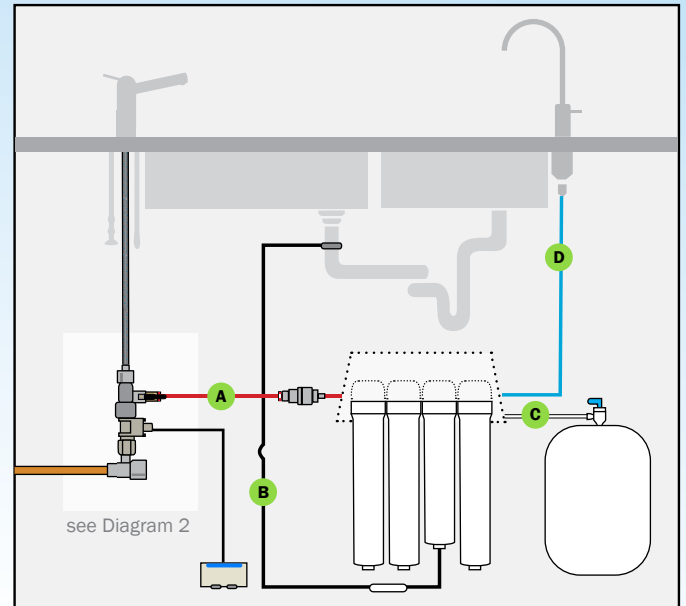
3. **Attach the Feed Water** - Unscrew the braided hose from ministop valve of the cold water line. Screw on the Female/Male Tee piece and re-attach braided hose (see Diagram 2).
4. **Installing the Drain Outlet Clamp Assembly** - Select a location for the drain clamp above the 'S' Trap. Position the drain clamp on the drain pipe. Allow adequate space for drilling. Tighten the clamp with the 'Tightening Screw' (see Diagram 3). Unscrew Quick Fit Connector. Using the opening in the drain clamp, drill a 1/4" hole in the drain pipe. Clean debris from the clamp. Reattach Quick Fit Connector.

▲ Where applicable, ensure you locate the drain connection away from any electric garbage disposal.

5. **Pure Water Faucet Installation** - The pure water faucet may be installed on any flat surface over 50mm (2") in diameter. First, check the underside of the location for interference. Make a small indent using a centre punch to mark the desired drilling location. Drill a pilot hole with a metal drill. Enlarge the hole using a 1/2" metal drill bit.

Once the hole has been drilled install the faucet as per Diagram 4. Be sure the faucet body, chrome plate, and the black rubber washer are placed above the sink. Install the black locating washer, the lock washer and nut underneath, then tighten firmly while aligning faucet in the desired direction. Install female Quick Fit Connector to the end of the faucet (see Diagram 4).

Diagram 1 - Undersink Setup



- A Red tube** connects the feed water valve to the system inlet
- B Black tube** connects the membrane port to the drain clamp
- C White tube** connects the pure water outlet to the storage tank
- D Blue tube** connects the post filter to the pure water faucet

Diagram 2 - Tee Piece Assembly

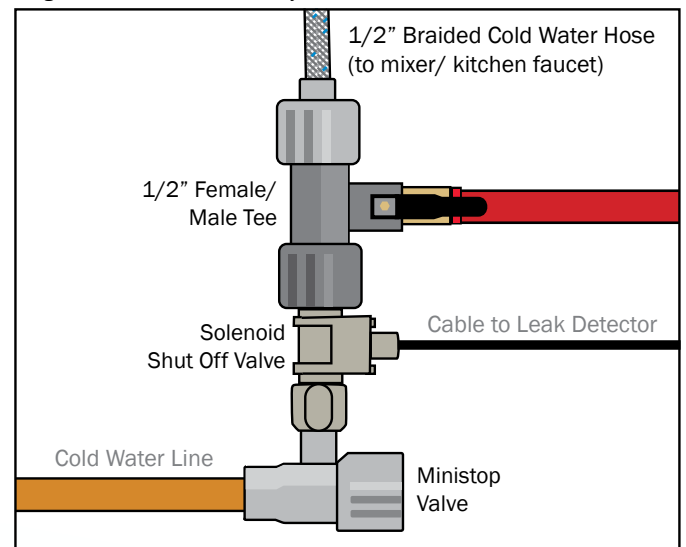
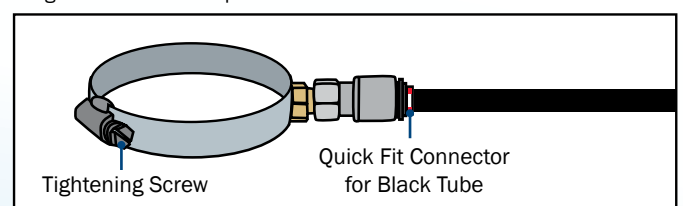


Diagram 3 - Drain Clamp



Ultra High Purity Reverse Osmosis

6. Place the storage tank in a convenient position. The tank can be placed either upright or on it's side. Attach the Storage Tank Tap, applying a few wraps of plumbers tape.

▲ Do not over tighten the tap when attaching to the tank thread. Over tightening may split the tap body resulting in a leak.

7. Connect hosing to the system, please refer to Diagram 5. Make sure the end of the tube is cut straight, ensuring it has an even, clean surface. It is recommended to not shorten the tubes.

8. **Activating the System for the first time** - Ensure the storage tank tap and pure water faucet are turned off. Slowly turn the ministop valve of the cold water line until fully open and then check the system, plumbing assembly and all drain lines are secure and free from leaks.

If system is free from leakage, open the pure water faucet and wait until the tap starts dripping. When dripping occurs, open up the tank tap and close the pure water faucet. Wait a few hours for the pure water storage tank to fill (the time taken will depend on water pressure, temperature and tank size).

Open the Pure Water Faucet and let the water flow until all the air has been expelled from the system. Initially water may be slightly discoloured and have some aeration. This will take a few minutes. Close the pure water faucet. In 15 minutes, check the connections for leaks and correct if necessary.

ⓘ When away for extended periods of time, shut off the water supply (see Step 2).

Diagram 4 - Faucet Installation

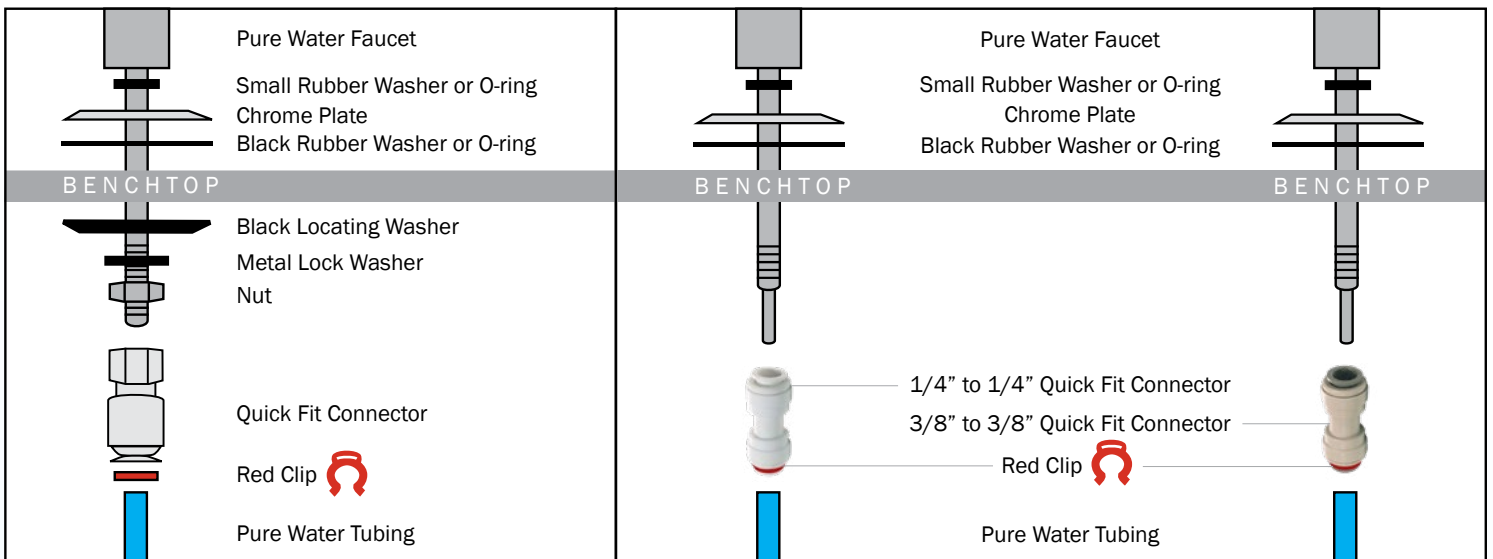
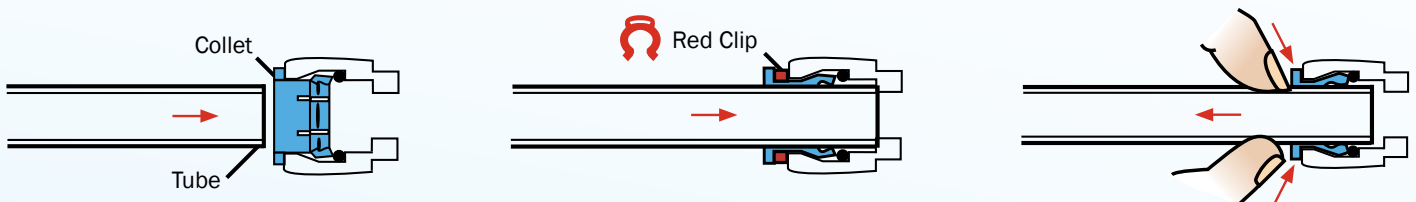


Diagram 5 - Tube Connections



1. To make the connection, push the tube firmly into the collet.

2. Make sure the tube is pushed as far as it can go and secure with a John Guest red clip.

3. **To remove the tube** - First remove the red clip. Use two fingers to push onto the collet and at the same time pull out the tube.