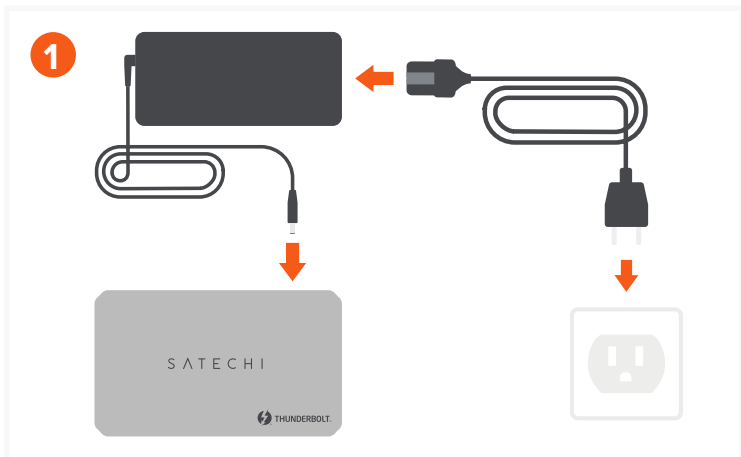
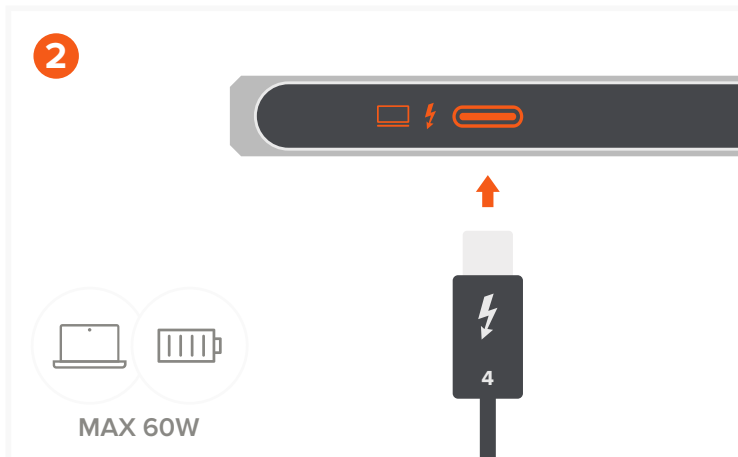


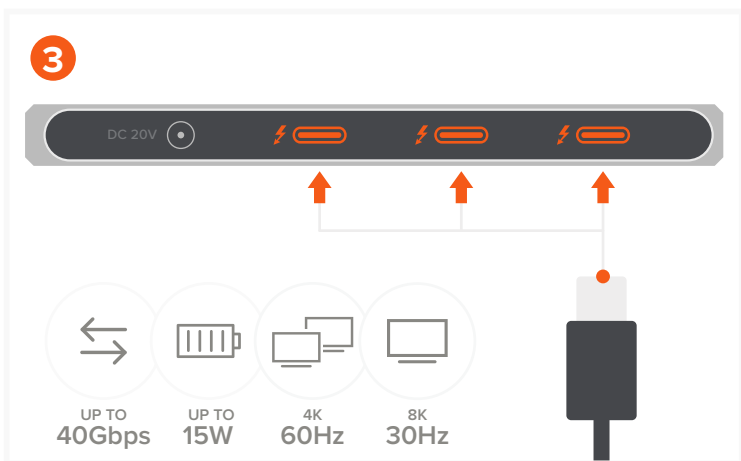
THUNDERBOLT 4 SLIM HUB



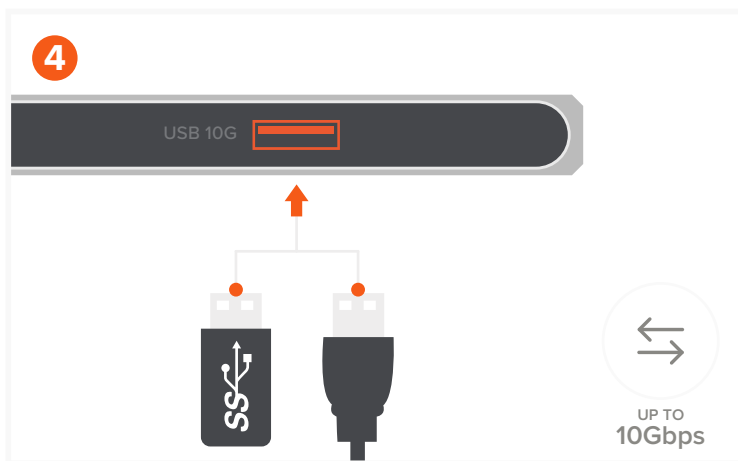
Connect the power adapter from the Hub's DC port directly to a wall outlet.



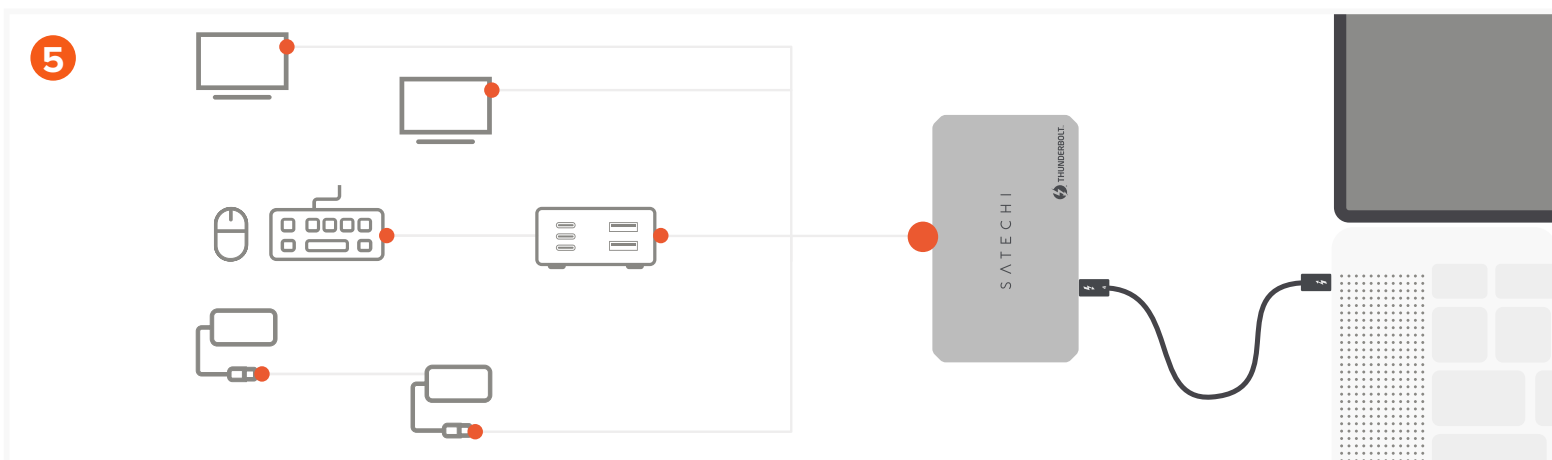
Using the included Thunderbolt 4 cable, connect the hub to your host device from its Thunderbolt 4 host port located at the front of the hub. Features 60W Max Pass-Through charging to the host device






Connect up to three USB-C devices to the hub's Thunderbolt 4 ports. Supports up to 40Gbps & 15W charging. Supports dual 4K HDMI output up to 60Hz total or single 8K HDMI at 30Hz.



USB 3.2 Gen 2 port allows for transfer data at up to 10 Gbps speed.



Allows for daisy-chaining up to 6 devices

-  a. Can connect USB-C to HDMI adapter for HDMI support
-  b. Can connect USB-C to USB-A adapter for additional USB-A ports
-  c. Can connect to other adapters and hubs for more port connectivity