

FUTUR

AIR PURIFIER (MINI)

INSTRUCTION MANUAL



CONTENTS

Product & Accessories	2
Packing List	2
Parameter Information	2
Product Working Principle	3
Use Instructions	3
Wi-Fi Connection	4
Air Quality Display	5
Safety Precautions	5
Daily Cleaning & Maintenance	6
Common Troubleshooting Methods	8

REPAIR TIPS

Please read this user manual carefully to ensure correct and safe use of this product.

Only the personnel trained and qualified maintenance for air purifier can repair the device.

Other personnel are not allowed to repair the air purifier without permission, so as to avoid serious consequences. When the air purifier is abnormal, please refer to the Common Faults Analysis and Exclusion.

If you can't troubleshoot the fault, please unplug the wire and cut off the power, then contact us. Any product quality or inconvenience caused by the device can be obtained from the local merchant customer service center consultation and services.

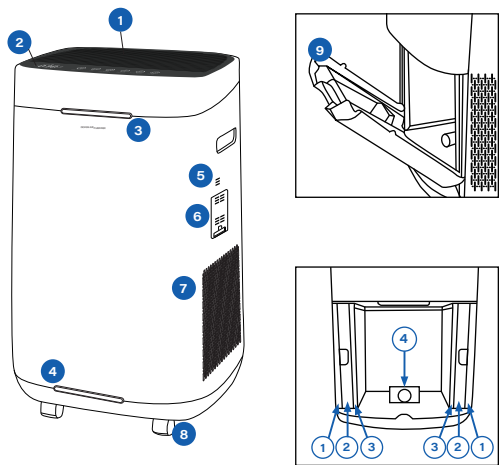
ENVIRONMENTAL IMPACT STATEMENT

1. All the packaging materials are environmentally friendly and recyclable. Please dispose of these packaging materials in an environmentally friendly manner to maintain a good environment.
2. Do not allow children to play with the plastic films and cartons, which may cause a room-breathing accident, so please keep packaging materials away from children.
3. It should be discarded when the old air purifier cannot be used. Please dispose of it as it cannot be reused before discarding. The old one contains useful materials that can be reused. Please assist in proper disposal or recycling to contribute to environmental protection.

TIPS

- Before using, please remove the packing bag of the filter in the purifier.
- For the removal and installation method of the filter, please refer to "**Daily Cleaning & Maintenance**" on page 7.

PRODUCT & ACCESSORIES



- 1. Air Outlet Grid
 - 2. Control Panel
 - 3. PM2.5 Indicator
 - 4. VOC Indicator
 - 5. VOC Sensor Cover
 - 6. PM2.5 Sensor Cover
 - 7. Air Inlet
 - 8. Wheels
 - 9. Filter Cover (back)
- ① Aluminum Mesh Filter
 - ② Electrostatic Filter
 - ③ Ozone Decomposition Filter
 - ④ Cold Plasma

PACKING LIST

Name	Air Purifier	Aluminum Mesh Filter (inside)	Electrostatic Filter (inside)	Ozone Decomposition Filter(inside)	Cold Plasma (inside)	Manual
Q'ty	1pc	2pcs	2pcs	2pcs	1pc	1pc

PARAMETER INFORMATION

Rated Voltage	220V
Rated Frequency	50Hz
Rated Power	60W
PM CADR	600m³/h
Lifespan	10 Years
Coverage Area	32-74m² (340-800 sq. ft)

PRODUCT WORKING PRINCIPLE

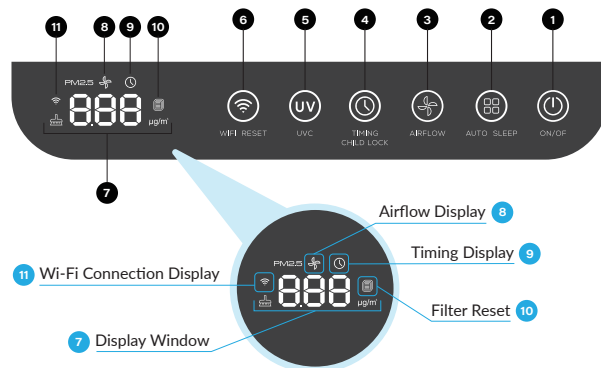
1. Sterilization Principle:

High-voltage electrostatic adsorption is through the electrostatic adsorption device under the action of a high-voltage generator can generate 4KV-8KV DC high voltage and form a strong electrostatic field inside the electrostatic adsorption device. When the indoor air passes through the electrostatic adsorption device, the particulate matter in the air (including microorganisms) is instantaneously polarized and charged with positive and negative charges due to the high-speed impact of positive and negative electrons when passing through the electric field. The charged particles attract each other due to the opposites when running in the electric field. The negatively charged particles will shift to the anode plate, and the positively charged particles will shift to the cathode plate, causing the charged particles to collide with each other in motion. The positive and negative charges will also discharge at the moment of collision and release a large amount of energy to destroy the cell wall and electrolyte of virus and bacteria, so as to achieve the purpose of disinfection and sterilization.

2. Application:

Home, office, school, hospital, food, catering, etc

USE INSTRUCTIONS



1. ON/OFF:

The icon lights up red when the power is on, and press the button to turn on/off respectively. When the machine is turned on, all keys light up white.

2. AUTO/SLEEP:

Short press for auto mode, the button and "AUTO" are fully lit; long press 3 seconds for sleep mode, the button and "SLEEP" are all on, at the same time, all display lights on the panel and machine are in off state.

3. AIRFLOW: Short press the button and switch to speed 1~2~3~4, icon 3 and icon 8 display correspondingly at the same time; the PM2.5 display will be restored after 5 seconds.

4. TIMING/CHILD LOCK:

Short Press and switch to timing mode, and then shift to 1~2~4~6~8H, icon 4 and icon 9 display correspondingly. The PM2.5 display will be restored after 5 seconds. Press long for 3 seconds to switch to child lock mode, button and "CHILD LOCK" are all on, the machine gives a "beep" prompt sound, and other keys fail. Press long for 3 seconds to release.

5. UVC:

Short press for uvc sterilizing mode, button and "UVC" are all on. Press again to disable.

6. WIFI/RESET:

Press the button for 3 seconds to enable the wifi network configuration mode, icon 6 and icon 11 blink simultaneously, the "WIFI" icon is steady on after the network is configured successfully. When the filter remaining time is less than 15%, icon 10 and "RESET" are blinking at the same time. Press the button for 5 seconds, and machine will give a "beep" prompt sound, the filter is reset successfully. Icon 10 will be lit up, number "038" will be displayed as "100" (i.e. full) and PM2.5 display will be restored after 2 seconds.

7. DISPLAY WINDOW

8. AIRFLOW DISPLAY

9. TIMING DISPLAY

10. FILTER RESET

11. WIFI CONNECTION DISPLAY

WI-FI CONNECTION



DOWNLOAD AND REGISTRATION

1. Scan the QR code to download "Smart Life" APP. You can also search "Smart Life" in either APP store or Google Play to install the APP.
2. Open the "Smart Life APP", tap "Register" to register a "Smart Life" account with your phone number or E-mail. Then sign in the APP.
3. Open the "Smart Life APP", click "add device" or tap "+" on the top right corner of the APP homepage. There are two methods to enter the page of "add device" -Add WiFi manually or search for the devices automatically.

In the homepage of add device manually, choosing any one of product rang to enter a new homepage and ensure the indicator light flash quickly.

The devices provide two configuration methods. In the homepage of Easy mode, tap "Other methods" on the top right corner to enter Easy mode and AP mode, then could choose one of mode to connect with WiFi.

Make sure your smart device is energised and your mobile phone is connected to your WiFi network. If the WiFi indicator of smart device do not flash, please press the center button of the light ring for more than 5 seconds until the indicator light keeps flashing quickly, it means the device is ready for configuration.

AIR QUALITY DISPLAY

The **PM2.5 indicator light** above the front panel of the machine shows different colors according to the current PM2.5 status:

- Blue: Excellent
- Green: Good
- Yellow: Moderate
- Red: Poor

Meanwhile, the display window on the control panel will display the current PM2.5 value synchronously.

The **VOC indicator light** under the front panel of the machine shows different colors according to the current status of gaseous pollutants:

- Blue: Excellent
- Green: Good
- Yellow: Moderate
- Red: Poor

SAFETY PRECAUTIONS

About Power

1. Use only two-pin sockets that conform to the standard voltage on the nameplate.
2. Do not use this product when the power cord, plug and power socket are damaged.
3. When unplugging the power, you must hold the plug instead of pulling the power cord, otherwise it may cause electric shock or fire due to short circuit.
4. Clean the dust on the power plug regularly.
5. If the power cord is damaged, it must be replaced by the manufacturer or professional maintenance personnel.

In use

1. Do not use the machine without installing the filters.
2. Do not insert fingers or other things into the air inlet or outlet.
3. Do not block the air inlet/outlet.
4. Do not close to or put on heat source objects (such as heating stove and other places that may contact with flammable gas).
5. If there is any smoke, odor and other malfunctions, should pull out the power plug immediately.

Service Restrictions

1. Do not use if there is oil residue, smoke, flame when lighting up a cigarette, or chemical odor in the air.
2. Do not use the machine in an environment full of flammable gases such as hydrogen, natural gas, propane, etc. to avoid electric shock, fire and other damage.
3. Do not use this unit when using insecticide spray.
4. Do not use it in unstable places such as easy dumping, hot, humid and wet places such as bathrooms, in order to avoid electric shock, fire or other damage.

About Moving

1. When moving, stop running and pull out the power plug.
2. When moving, hold the handle on the side of the machine ; don't hold the front panel, lest the machine fall and injure people.

Notice for Cleaning

1. Do not clean ozone filter and composite hepa filter by water.
2. Caution should be taken when cleaning the machine, as strong corrosive cleaners will damage the machine surface.
3. Only use soft cloth to clean the machine surface, otherwise it may be damaged or broken, and may cause sensor failure.
4. Do not use alcohol or organic solvents to wipe the product, or it will cause damage or electric shock, fire, etc.
5. When cleaning or not using the machine, please unplug the power from the socket, otherwise it may cause electric shock or fire due to short circuit.

About Installation

1. The host cannot start if the front panel is not installed correctly.
2. Do not install near the sensors directly to the tuyere, otherwise it may affect the normal operation of the machine.
3. Do not install near objects (such as curtains, etc.) that may contact with the air inlet or outlet, otherwise the object may get contaminated or cause this unit to malfunction.
4. Do not install the unit where it may be directly exposed to condensation. Please use it at room temperature of 0-40 degrees.
5. Do not install in the place that will produce black smoke (such as kitchen, etc.), otherwise it may cause the machine surface to crack or sensor failure.

Warm Reminding

1. There should be a certain space around the machine to let the air flow naturally, so as to improve the purification effect.
2. This machine is not suitable for the disabled, the perceptual disturbance, the mentally handicapped or children to operate by themselves.

DAILY CLEANING & MAINTENANCE

Clean the Top Outlet and Inlet Grille

1. Use a soft brush to remove dust and debris.
2. If necessary, use a slightly wet paper or cloth to remove large deposits, and do not use any irritating abrasives or cleaning pads on any parts of the equipment.

Clean VOC Sensor

The VOC sensor is located in the middle right side of the machine, above the air inlet grille.

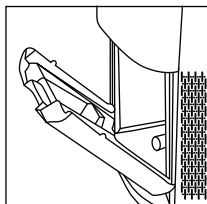
1. Use a soft cloth to clean dust and debris around the VOC sensor to maintain accurate smell identification.
2. Do not modify or open the VOC sensor, and do not spray in or near the grille opening above the VOC sensor, which may cause sensor and warranty failure.

Cleaning Dust Sensor

1. Open the sensor cover
 2. Use a wet cotton swab to clean the lens, air inlet and air outlet.
 3. Use a dry cotton swab to remove residual water stains of the dust sensor.
- The dust sensor needs to be cleaned regularly (approximately every two months) for the machine to operate efficiently.
 - The dust sensors needs to be cleaned more frequently if the machine is placed in areas where dust accumulates.
 - Do not use the swab on any part or area other than the dust sensor.

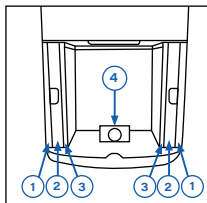
Filter Assembly

This purifier is equipped with 7 different pre-assembled filters. When the filters should be replaced or cleaned, please install the back cover after the filters are assembled.



Sequence of Filter Installation

- ① Aluminum mesh filter (washable)
- ② Electrostatic filter (washable)
- ③ Ozone decomposition filter (unwashable)
- ④ *Plasma Tube (Recommended to replace every 2 years)



Guidance for Cleaning Ozone Decomposition Filter

Use a vacuum cleaner or cloth to remove dust and fluff. Recommend cleaning the filter time is about 8-12 years (this replacement cycle greatly varies from different environments)

Guidance for Cleaning Aluminum Mesh Filter

The aluminum mesh filter collects large particles and should be cleaned at least once every two months depending on the using environment.

1. Use a vacuum cleaner or tissue to remove dust or fluff.
2. Wash with soap water.
3. Thoroughly rinse and remove soap residue from the filter.
4. Dry the filter.

Cleaning Electrostatic Filter

1. Take out the electrostatic filter
2. Spray with neutral detergent and let stand for 5-10 minutes.
3. Shake well in warm water (under 40 degrees) and get out.
4. Repeat step 2 and 3 until it is clean.
5. Rinse the dirt on the dust collector with warm water.
6. Use a hair dryer or dry the filter in the sun.

Whole Machine Cleaning

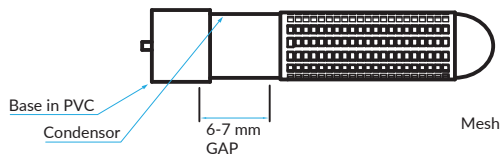
Clean with a damp sponge or cloth

Do not immerse the air purifier in water

Do not disassembly fixed parts for cleaning

Cleaning of Condenser Mesh

1. Gently unscrew the quartz condenser.
2. Remove the OUTSIDE MESH of the condenser : if it seems to be difficult, rotate the net slightly on the quartz condenser.
3. Clean the quartz condenser by using a moist cloth. **WARNING :** Do not use detergents, soaps or similar products.
4. Check whether the condenser shows any cracks or other damage. If so, replace it.
5. As soon as a whitish layer appears on the metal grill inside the condenser, it means the condenser should be replaced.
6. Reposition the metal mesh on the condenser, placing it over the internal grill. **WARNING :** Leave a minimum distance of 6-7mm from the bottom of the condenser.
7. Check that SPRING TAB touches the metal MESH OUTSIDE and pushes in against the glass of the quartz condenser.



COMMON TROUBLESHOOTING METHODS

MALFUNCTION	POSSIBILITY	METHOD
The air outlet with odor	There are many pollution sources in the room	It is suggested that the room be ventilated by opening the window.
	The filter is heavily polluted	Replace a new filter
The effect of dust removal and purification are not obvious, and the air quality is not significantly improved.	The machine has no filter	Install the filter
	The machine is placed in a narrow place or there are obstacles nearby, which affect the purification effect	Clear the blockage or move somewhere else
Too much noise when running	The filter is too dirty	Clean or replace the filter
	Whether the installation is not firm enough	Contact after sales service center
The filter can't fit in	Sundries in machine	Remove debris
	The filter is inversely installed	Adjust the filter in the correct direction and align it with the bottom slot
The machine won't turn on	The filter cover or filter not installed properly	1. Re-install the cover and filter 2. Contact after sales service center
	Motor turns plugging/ motor overheat protection, machine prompts, and does not work	1. Unplug, cool for 1-2 hours and reconnect 2. Contact after sales service center