

-1805-

EARNSHAW

*London*

INSTRUCTION  
MANUAL



-1805-

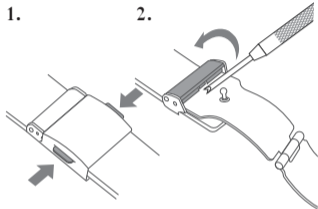
EARNSHAW

*London*

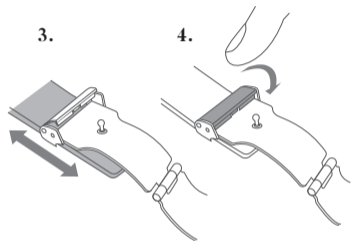
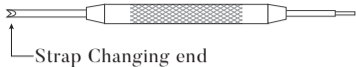
**Congratulations  
on your purchase of this finely  
crafted Earnshaw Timepiece.**

**You are now the owner of a  
timepiece that draws its roots from  
the renowned English horologist,  
clock and watch maker  
Thomas Earnshaw  
1749 - 1829**

## ADJUSTING MESH BAND TO FIT.



1. Push buckle buttons to unbuckle the strap.
2. Use the Strap Tool to lift up the locking part.



3. Slide the buckle along the band to adjust the size.  
(Note that the band has cavities on the backside for different buckle options)
4. When correct size is set, push down the locking part.