



POSSIBILITIES

Instore display assembly instructions

POS DISPLAY STANDS

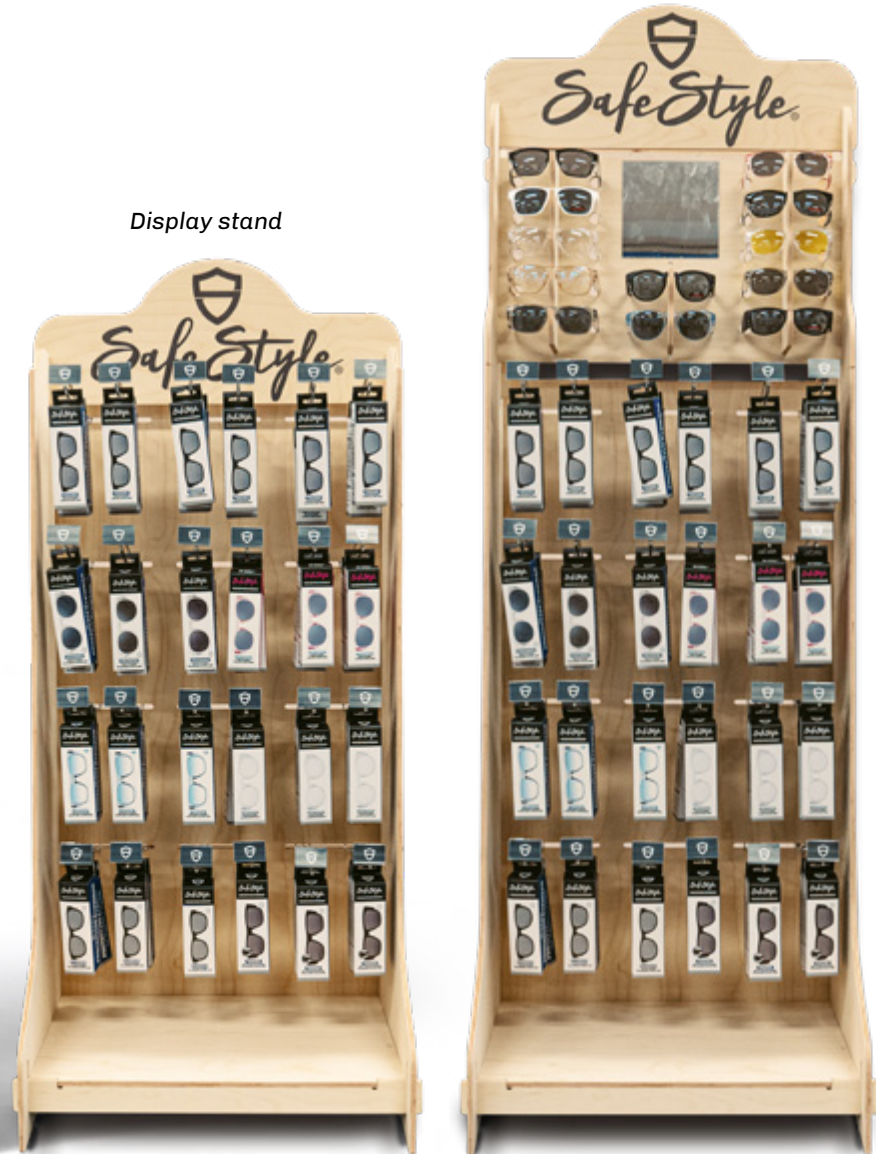
Anywhere sign



Display rack

Display stand

Display stand & rack



POS DISPLAY STANDS

Pack Part A - Anywhere sign (Safestyle Headboard with small feet)

Pack Part B - Display Stand (12x Pair Display with mirror & Feet)

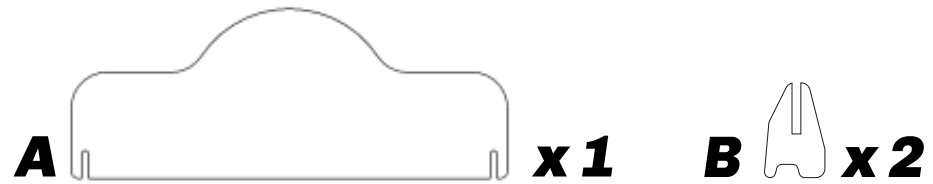
Pack Part C - Display Rack (Large Peg Board with legs, floor board, small board across the front and 2x small joiner pieces)

Pack Part D - Display Pegs

SCAN for our step by step assembly instructions

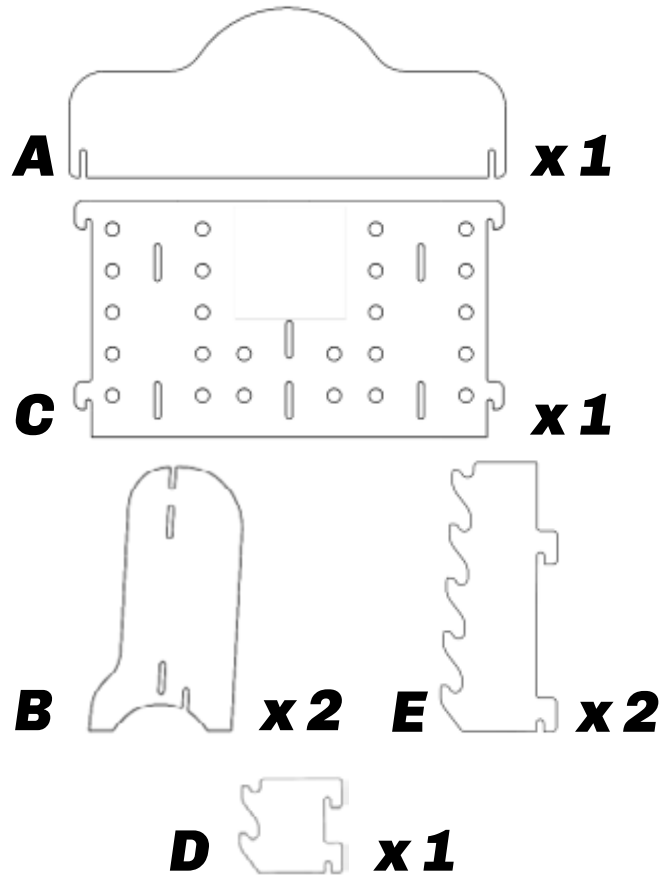


ANYWHERE SIGN



Insert part B (feet) into part A (Headboard), please ensure that the larger width of part B is facing behind.

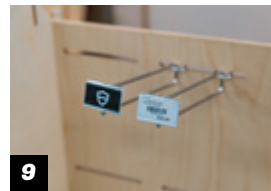
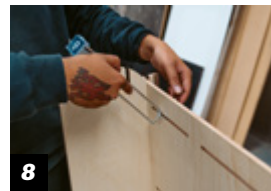
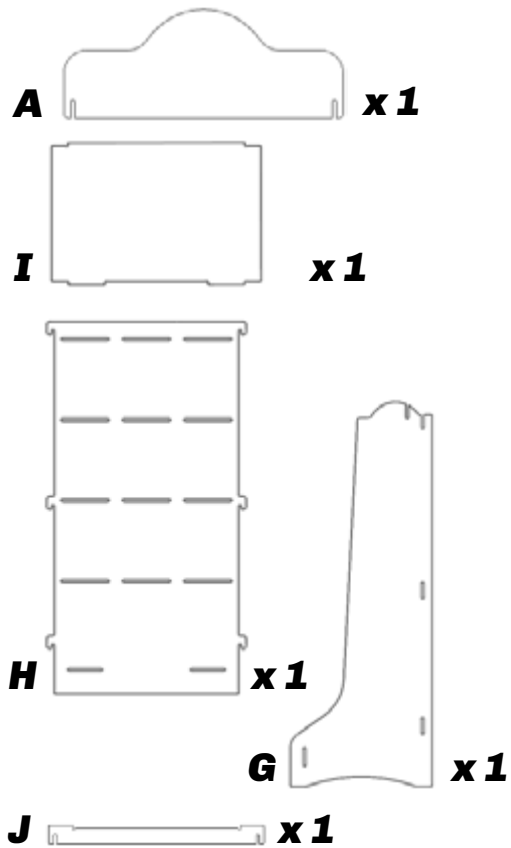
DISPLAY STAND



Display Stand (Pack A & B):

- Insert Part B (Side Legs) onto either side of Part C creating a free counter display.
- Next using both parts E's slot them into each end creating bridge support.
- Follow this by repeating step 2 with Part D in the centre.
- Finally, insert Part A (headboard) from Pack A on top to finish your counter display.

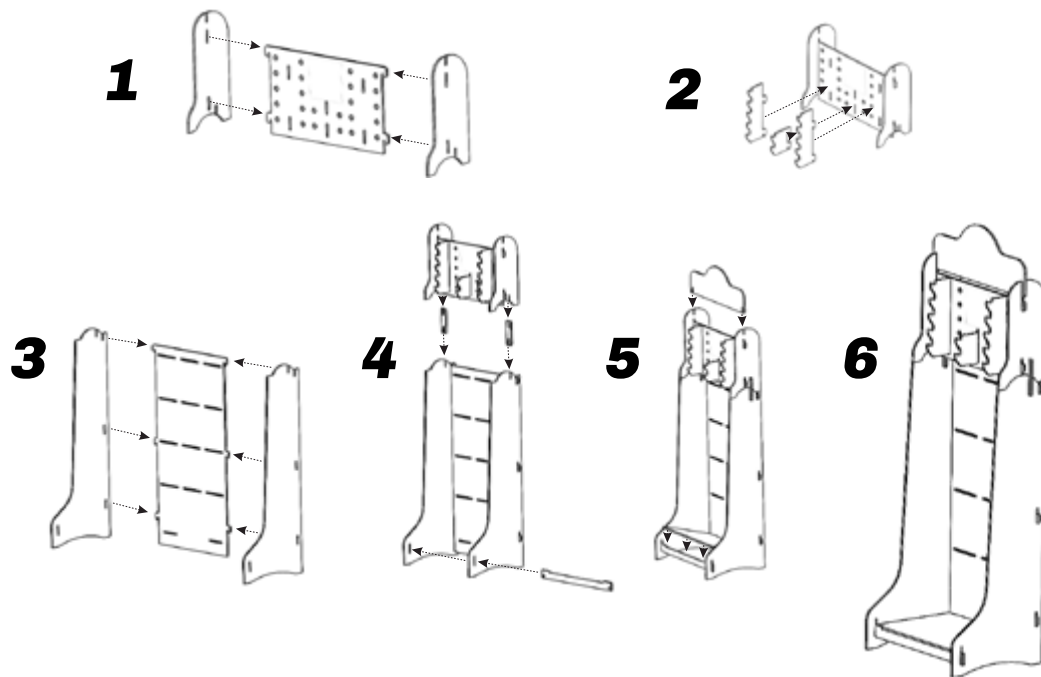
DISPLAY STAND



Floor Stand (Pack A, C & D):

- Insert Part G (Side Legs) onto either side of Part H (Back Board) ensuring they are locked into place, you'll notice Part H has recessed grooves on one side, this is the back of the floor stand.
- Insert Part J in between both feet of Part G creating a bridge across for stability.
- Followed this by inserting Part I (Bottom Floor) into the small slots at the bottom of Part H and resting on top of Part J creating a floor.
- Insert Part A (headboard) on the top.
- Finally, insert prongs into Part H.

FLOOR STAND ASSEMBLY



Floor Stand + Display Stand Combo (Pack A, B, C & D):

This is a combination of the Floor stand and Display Stand assembled as before.

- Remove the header from the Floor stand.
- Connect the display stand to the top of the Floor stand by using part F to join the two together.
- Attach the header to your Display Stand to complete the assembly.

