

LANGUAGES



# INSTRUCTION MANUAL



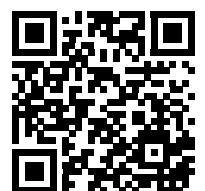
# ASUGA XLR

*Check that you have the latest version of this manual before each use.*

*Contrôlez avant chaque utilisation de ce manuel si vous en avez la dernière version.*

*Überprüfen Sie vor jedem Gebrauch dieses Handbuchs, ob Sie die neueste Version haben.*

*Controleer voor elk gebruik van deze handleiding of u over de laatste versie beschikt.*



C-00288 Manual (Version3)

[www.corally.com](http://www.corally.com)

[www.corally.com](http://www.corally.com)

## INTRODUCTION • QUICK START GUIDE



Thank you for purchasing a Team Corally car. This manual describes the instructions for using the model and the electronic components. You will also find some tips on how to maintain your RC model so that you can enjoy it for years to come. You have purchased one of the most efficient models available on the market that has been designed by a team of professionals. You will also benefit from the best after-sales support. All Team Corally models guarantee a high quality of manufacture and performance that guarantees you a high satisfaction of use and services provided by the Team Corally. Always take the time to read the instructions carefully in order to follow all the procedures to use your RC model safely for you and for other people and property in the area. This will allow you to take full advantage of all the performance of your RC model.

Please also check the website [www.corally.com/Downloads/](http://www.corally.com/Downloads/) to check if you have the latest version of this instruction manual. (Version: see bottom cover of this manual)

If you have any questions about the model and its components, you can send a message to [info@corally.com](mailto:info@corally.com)

We also recommend that you get help from an experienced model maker or your dealer.

You will find all the references of the spare parts on the website [www.corally.com](http://www.corally.com)

### TERM OF USE

The user is responsible for the use of your model. The user assumes all risks associated with the use of the model. This model is not intended for use by children under 14 years of age without the supervision of a responsible adult who is familiar with the dangers of using a RC model. Team Corally / JSP Group Intl bvba, its manufacturers, distributors and resellers cannot control the use and load of the model and therefore cannot be held responsible for any damage to property and damage caused to persons resulting from the use of this product. You must accept these conditions and consider yourself fully responsible for the use of this product. If not, do not use this product.

Due to the continuous development of our products, the exact specifications of the kit may vary. If you have a problem with your new kit, please contact the store where you purchased it, indicating the part number(s).

Team Corally / JSP Group Intl bvba reserves the right to change any specification without notice. All rights reserved.

## READ FIRST • QUICK START GUIDE

This owner's manual is designed for use with your vehicle and contains the instructions you will need to operate and maintain your vehicle.

- We know you want to start driving immediately after unpacking, but it is very important that you take the time to read this manual carefully, even if you are an experienced R/C driver.
- Read carefully and follow all instructions in this manual. Failure to comply with the instructions will be considered as abuse and/or negligence which may result in the cancellation of the warranty.
- Your vehicle is designed to operate on uneven terrain. However, dust, sand, water and carpet fibres can get into your car's workspaces and can damage your vehicle if they are not removed quickly. We do not guarantee any warranty on your vehicle against damage caused by external elements such as sand, dirt or water. Users are responsible for the maintenance and safe operation of this vehicle.
- This product is not a toy. It is not suitable for users under 14 years of age, unless they are supervised by adults.
- Never attempt to disassemble electronic components. These have been carefully calibrated at the factory.
- Only improve your car with parts made for your car. If you upgrade performance, replace the entire system (such as the motor, inverter, battery, etc.) so that all components are properly adapted. Any malfunction resulting from a custom modification will void your warranty.
- Before driving your vehicle, please read this manual in its entirety and examine your vehicle and radio control system for any defects.
- For better performance, some adjustments may be necessary.
- This vehicle requires a battery (included in the car or in the packaging). Make sure the vehicle's battery is sufficiently charged before driving, otherwise you may lose control of the vehicle.
- The radio transmitter requires 4 AA batteries (not included)
- Always remove or disconnect the battery from the vehicle to the inverter when not in use.
- Please drive your car in a spacious place. Never drive your car on the street or in traffic. Public places are subject to specific legislation by country, city, municipality, please comply with the legislation for the use of RC models in your region.
- This product is fully assembled in the factory. We accept no liability for damage and/or accidents resulting from custom modifications and/or malfunctions.

## SAFETY PRECAUTIONS • QUICK START GUIDE

For your safety, always use wear gloves and goggles when assembling and maintaining your model.

Always take all necessary precautions when handling products (silicone oil, grease, thread lock, cyanolyte glue, fuel) for the operation of the model. (Refer to the manufacturer's instructions)

For your safety, to keep the warranty and obtain the best performance, always use original CORALLY genuine parts.

Contains: LEAD (CAS 7439-92-1) ANTIMONY (CAS 7440-36-0)

**WARNING:** This product contains a chemical known to the state of California to cause cancer and birth defects or other reproductive harm.

**CAUTION: CANCER HAZARD**

Contains lead, a listed carcinogen. Lead is harmful if ingested. Wash thoroughly after using.

DO NOT use product while eating, drinking or smoking.

## USE PRECAUTIONS • QUICK START GUIDE



Failure to operate your model in a safe and responsible manner may result in injury to yourself, others or damage to property around you.

- Do not use your model on public roads or in areas where you may encounter pedestrians or riders.
- Do not operate in a congested area or in crowds.
- Do not operate in areas where loud noises can disturb others, such as hospitals and residential areas.
- Do not operate your model with obstructed line of sight, at night or near water.
- Your model is radio controlled, it is subject to possible radio interference. Radio interference can cause loss of control of your model. Be careful.
- Take care not to injure yourself while using tools to adjust or upgrade your model.
- Since the model contains small parts, keep out of reach of children while assembling and/or disassembling your model.
- If your model becomes stuck against an object, release the throttle and retrieve it by hand
- Do not continue to apply the throttle when your model is stuck. This may damage the motor and/or ESC/Receiver unit.
- Turn OFF your model and don't use it if it runs erratically. Please do not use your model again until the problem has been solved.
- Keep the wheels of the model off the ground when checking the operation of the radio equipment.
- When learning to operate your model, go to an area that has no obstacles that can damage your model.
- Before and after each use, check all the screws on the model.
- To maintain the best performance, check that all moving parts move freely.



Take all necessary precautions before, during and after using your model. You are responsible for the safe assembly, maintenance and use of your model.

In case of any questions, contact your local reseller or contact Team Corally support for assistance.

## LIPO BATTERY SAFETY PRECAUTIONS • QUICK START GUIDE

- Follow and respect the manufacturer's instructions for use
- It is important to check that your ESC is set to LIPO if you are using a LIPO battery. Failure to comply with this instruction will result in increased battery discharge and may cause fire and damage to persons and property.
- When charging or storing LiPo batteries always use LiPo Safety Bag (Flame retardant).
- Always respect the maximum rate and voltage specified by the battery manufacturer.
- Charge the LIPO battery outdoors or in a ventilated area away from flammable objects and surfaces.
- NEVER leave your LiPo battery unattended while charging.
- If the battery swells during charging, stop charging immediately and disconnect the battery from the charger. Leave the battery outside for a few hours and observe. Then recycle the battery according to the instructions of your country/region. Never dispose of a LIPO battery with domestic waste.
- Before recycling your defective battery, it must be neutralized. Take a plastic container, fill it with water and add a lot of salt until the water becomes opaque. Place the LIPO battery in the water and leave for 24 hours. Check with a voltmeter that the voltage is 0.0V. Then recycle the battery according to local regulations.
- Never charge a damaged or inflated battery.
- Never discharge the battery cells below 3.2V.
- Always use the appropriate balancer/charger when charging your LiPo battery pack.
- When the battery is empty, check the temperature of the battery before charging it. If the battery is very hot, wait until it cools before charging it.
- Never charge a very hot battery as this may cause an explosion or fire.
- When the battery is empty, recharge it immediately. Do not store an empty battery, the battery will continue to discharge, it will fall below the minimum voltage and become unusable.

## WARRANTY • QUICK START GUIDE



If material defects or manufacturing faults should arise in a product distributed or manufactured by Team Corally / JSP Group Intl bvba, and purchased by a consumer, we Team Corally / JSP Group Intl bvba acknowledge the obligation to correct those faults or defects within the limitations described below. This manufacturer's warranty is in addition to, and does not affect, the legal or contractual rights of the consumer which arise from the purchase of such products. Team Corally / JSP Group Intl bvba guarantees the consumer that its products are free from material, manufacturing, and construction faults, as determined by the general state of knowledge and technology valid at the time of manufacturing. The fault responsible for causing the damage must be proven to have been present in the product at this time. Claims for compensation arising from consequential damage or product liability will not be considered valid unless they fall under peremptory provisions of the law. If material defects or manufacturing faults should arise in a product distributed or manufactured by Team Corally / JSP Group Intl bvba in the European community (EC) and purchased by a consumer, then Team Corally / JSP Group Intl bvba undertakes to correct those defects within the limitations described below. This manufacturer's declaration does not affect the consumer's legal or contractual rights regarding defects arising from the purchase contract between the consumer and the dealer or reseller. Extend of the Warranty

If a claim is made under warranty, we take at our discretion to repair or replace the defective goods. We will not consider supplementary claims, especially for reimbursement of costs relating to the defect (e.g. installation / removal costs) and compensation for consequent damages unless they are allowed by statute. This does not affect claims on legal regulations, especially according to the product liability law.

### Provisions of the Warranty

The purchaser is required to make the warranty claim in writing, and must enclose original proof of purchase (e.g. invoice, receipt, delivery note) and the appropriate warranty card. He must send the defective goods to our local representatives or directly to Team Corally / JSP Group Intl bvba, Geelseweg 80, 2250 Olen, Belgium at his own risk and cost.

The purchaser should state the material defect or manufacturing fault, or symptoms of the fault, as accurate as possible, so that we can check if our warranty obligation is applicable. The goods are transported from the consumer to us, and from us to the consumer, entirely at the risk and cost of the consumer.

### Invalidation of the Warranty

The consumer cannot make a claim under warranty when the fault is affecting the use of the product arising from natural wear, competition use, or improper use (including installation) or external forces. The consumer's adherence to the building and operating instructions relevant to the model, including the installation, operation, use of, and maintenance of, model-related components cannot be supervised by Team Corally / JSP Group Intl bvba. Therefore Team Corally / JSP Group Intl bvba is in no way liable for loss, damage, or costs resulting from improper use, or behaviour in any way connected to the above described provisions. Unless otherwise required by law, Team Corally / JSP Group Intl bvba is in no way whatever liable to provide compensation for damages arising from the improper use of the model (including personal injury, death, damage to buildings, loss of turnover, loss of business, or interruption of business, or any other direct, or indirectly caused, consequential damage).

### Duration of Validity

The claim period is 24 months from the date of purchase of the product by the consumer from a dealer in the European Community (EC) counted from the date of purchase. The claim period is 12 months from the date of purchase of the product by the consumer from a dealer outside the European Community (EC) counted from the date of purchase. If a defect arises after the end of the claim period, or if evidence or documents required according to this declaration in order to make the claim valid are not presented until after this period, then the consumer forfeits any rights or claims from this declaration. The guarantee period is not prolonged by the granting of any claims within the framework of this warranty, especially in the case of repair or replacement. The guarantee period also does not restart in such cases.

### Warranty Expiration

If we do not acknowledge the validity of a claim based on this declaration within the claim period, all claims based on this declaration will expire after six months from the time of registering the claim; however this cannot occur prior to the end of the claim period.

For any support, contact us at [support.corally.com](http://support.corally.com)



**DOWNLOAD • QUICK START GUIDE**

 Download the latest version of this manual and other languages.

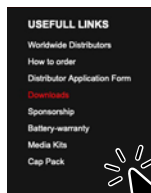
Download updated PDF pages of : *Spare parts - Option Parts - Exploded Views - Screws Chart ...*

[www.corally.com/Downloads/](http://www.corally.com/Downloads/)



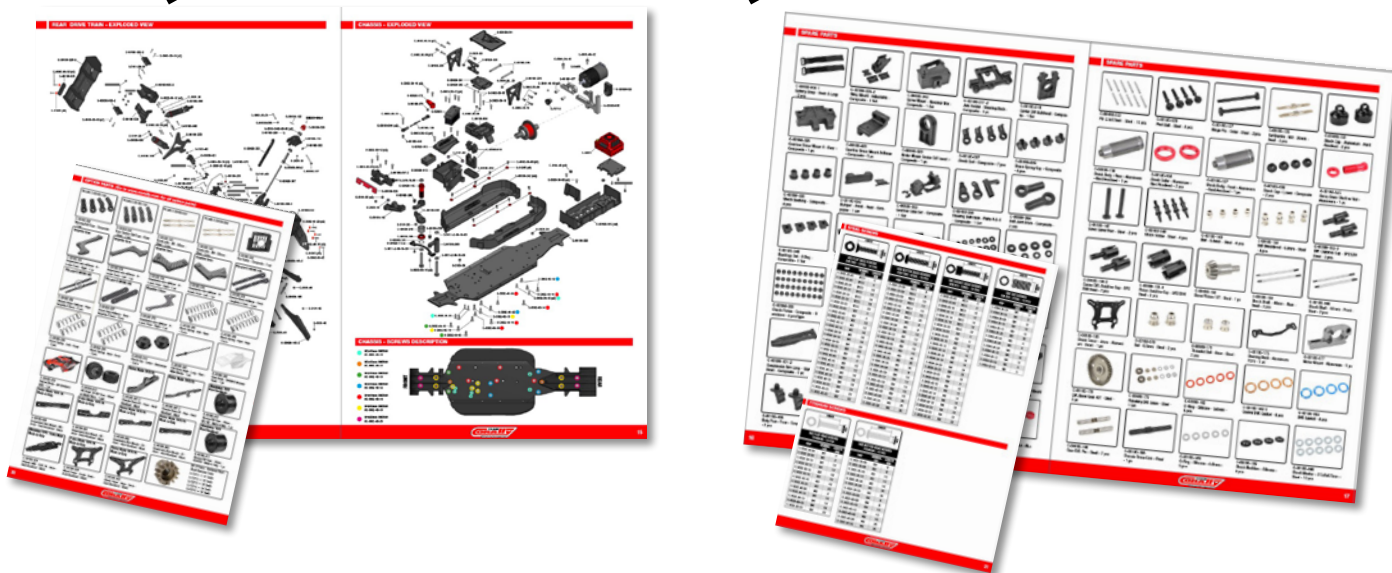
“DOWNLOAD”  
Home page / right column

**Click !**



“DOWNLOAD”  
Bottom of the website

**Click !**



**KIT CONTENT (Depends on the selected model)**



Transmitter

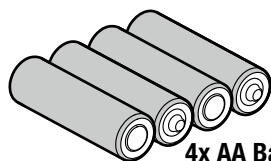


RTR Model (Chassis with Body)

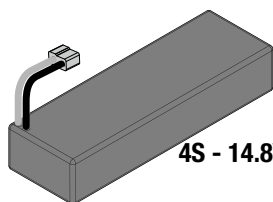


User Guide

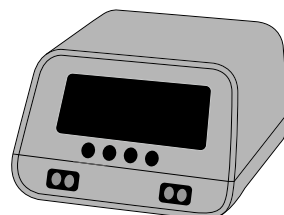
**REQUIRED FOR OPERATION (Not included)**



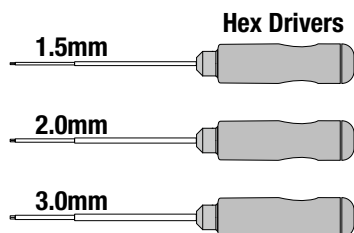
4x AA Batteries  
for the Transmitter



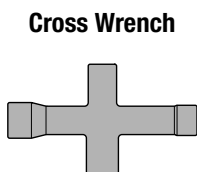
4S - 14.8V LiPo Battery



Charger



Hex Drivers

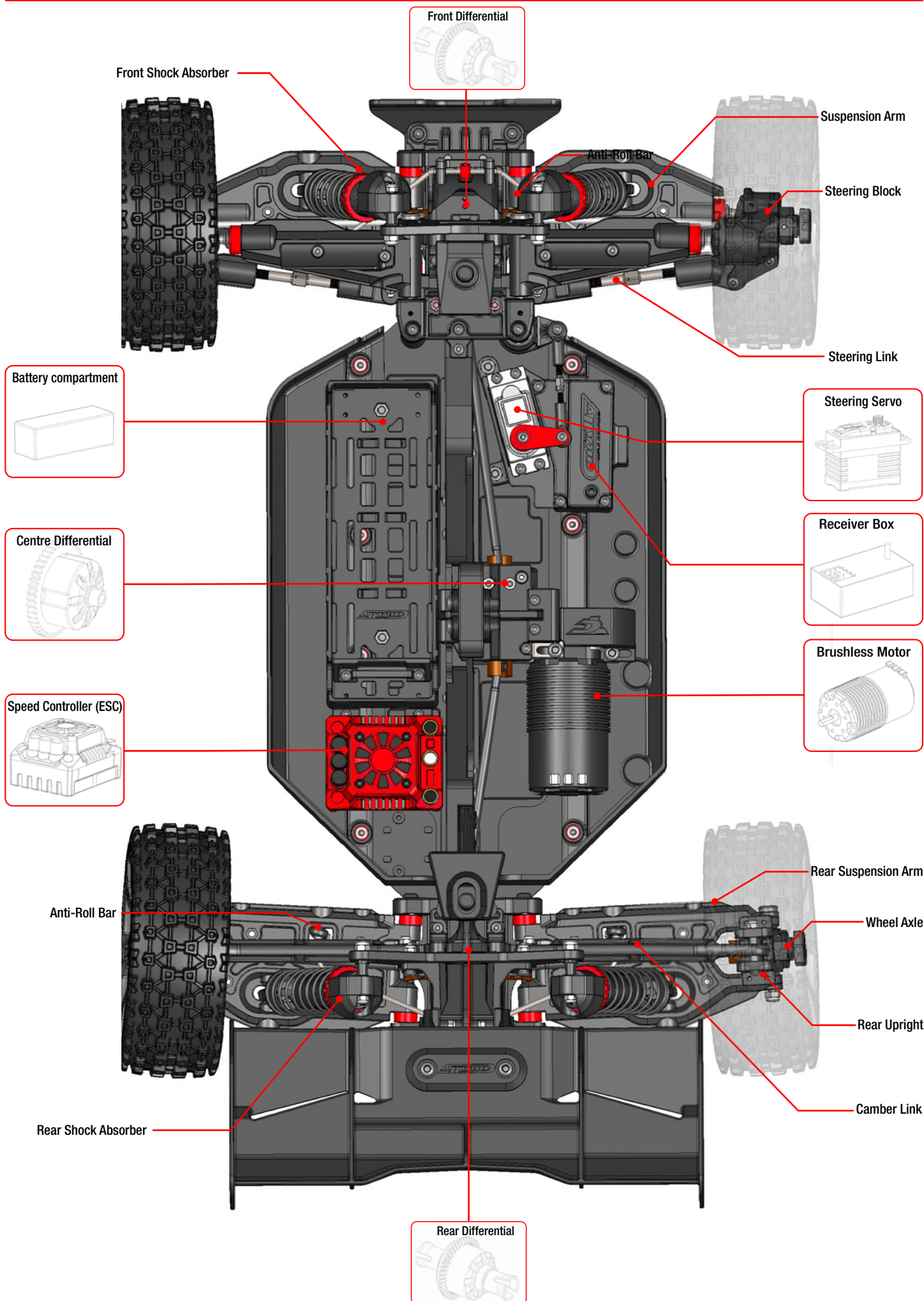


Cross Wrench



Silicone Oil  
(for maintenance)

**CAR COMPONENTS • QUICK START GUIDE**



**FOLLOW THE STEPS • QUICK START GUIDE**



**READ THE INSTRUCTIONS**

**Instruction**

**CHARGE THE BATTERY**

**INSTALL 4x AA BATTERY - 1.5V**

**MAKE SURE THAT ALL SCREWS AND NUTS ARE TIGHTENED PROPERLY.**

**INSTALL THE BATTERY**

**TURN ON THE TRANSMITTER (Always First)**

**CONNECT THE BATTERY TO THE ESC SWITCH ON THE ESC**

**CHECK THE FUNCTIONS**

**CHECK THE RADIO SYSTEM RANGE**

Move away from the max. distance you will drive the vehicle.  
Check that the vehicle responds properly to the controls.  
If not, reduce the distance or change the driving location.

**DRIVE SLOWLY TO BEGIN**

**WHEN FINISHING**

- 
- 
- 
- 

**CLEAN AND MAINTAIN YOUR VEHICLE**





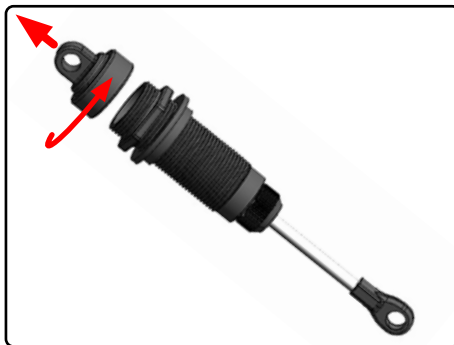
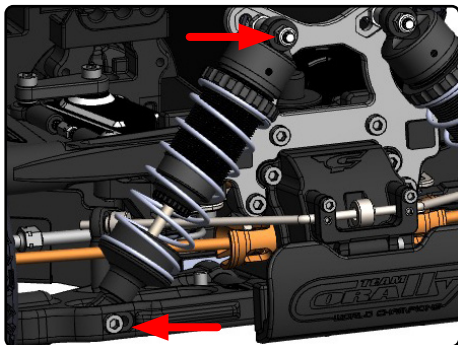
It may be necessary to replace the silicone oil in the shock absorbers every 40 runs (depends on how you drive and the type of terrain you drive on).

Il peut être nécessaire de remplacer l'huile silicone des amortisseurs toutes les 40 courses (cela dépend de votre conduite et du type de terrain sur lequel vous roulez).



Es kann notwendig sein, das Silikonöl in den Stoßdämpfern alle 40 Fahrten zu wechseln (abhängig von Ihrer Fahrweise und dem Gelände, auf dem Sie fahren).

Het kan nodig zijn de siliconenolie in de schokdempers om de 40 ritten te vervangen (afhankelijk van uw rijstijl en het soort terrein waarop u rijdt).



**ALWAYS USE SILICONE OIL, NEVER USE ANY OTHER TYPES OF OIL.**

FILL	MOVE UP	WAIT	TIGHTEN 50%	MOVE UP	TIGHTEN FULLY
<p><b>2</b> <b>FILL</b></p> <p>1 <b>↓</b></p>	<p><b>MOVE UP</b></p> <p><b>3-4x</b></p>	<p><b>WAIT</b></p> <p><b>5min</b></p>	<p><b>TIGHTEN 50%</b></p>	<p><b>MOVE UP</b></p> <p><b>SLOWLY</b></p>	<p><b>TIGHTEN FULLY</b></p>
<ul style="list-style-type: none"> <li>• Fill the shock with silicone oil.</li> <li>• Remplissez l'amortisseur avec de l'huile de silicone.</li> <li>• Füllen Sie den Dämpfer mit Silikonöl.</li> <li>• Vul de schokdemper met siliconenolie.</li> </ul>	<ul style="list-style-type: none"> <li>• Move the piston up&amp;down (3-4x) to release the air bubbles in the silicone oil.</li> <li>• Déplacez le piston de haut en bas (3-4x) pour libérer les bulles d'air.</li> <li>• Bewegen Sie den Kolben nach oben&amp;unten (3-4x), um die Luftblasen abzulassen.</li> <li>• Beweeg de zuiger op en neer (3-4x) om de luchtbel-len te laten ontsnappen.</li> </ul>	<ul style="list-style-type: none"> <li>• Pull the Shock shaft down and wait until the bubbles rise to the surface.</li> <li>• Tirez la tige d'amortisseur vers le bas et attendez que les bulles remontent à la surface.</li> <li>• Ziehen Sie die Schockwelle nach unten und warten Sie, bis die Blasen an die Oberfläche steigen.</li> <li>• Trek de Schokas naar beneden en wacht tot de luchtbel-len naar de opper-vlakte stijgen.</li> </ul>	<ul style="list-style-type: none"> <li>• Screw in the shock absorber cap at 50%.</li> <li>• Vissez le bouchon d'amortisseur à 50%</li> <li>• Schrauben Sie die Stoßdämpferkappe zu 50 % ein.</li> <li>• Schroef de dop van de schokdemper op 50%.</li> </ul>	<ul style="list-style-type: none"> <li>• Gently move the piston in upper position, the oil excess will flow out.</li> <li>• Déplacez doucement le piston en position haute, l'excédent d'huile s'écoulera.</li> <li>• Bewegen Sie den Kolben vorsichtig in die obere Position, das überschüssige Öl fließt dann heraus.</li> <li>• Beweeg de piston langzaam in de bovenste positie, de overtollige olie zal eruit stromen.</li> </ul>	<ul style="list-style-type: none"> <li>• Now tighten the cap fully but not too much otherwise the membrane will be deformed.</li> <li>• Maintenant, serrez le bouchon à fond, mais pas trop, sinon la membrane sera déformée.</li> <li>• Ziehen Sie nun die Kappe vollständig, aber nicht zu fest an, da sonst die Membran verformt wird.</li> <li>• Draai nu de dop helemaal vast, maar niet te vast, anders wordt het membraan vervormd.</li> </ul>

	FRONT		REAR		SHOCK PISTON
	SILICONE OIL	SPRING TENSION	SILICONE OIL	SPRING TENSION	
TRACK USE	1000CPS	4mm	800CPS	0mm	8 Holes Ø1.2mm
OFF-ROAD	800CPS	4mm	700CPS	0mm	8 Holes Ø1.2mm
BASHING	1000CPS	4mm	800CPS	0mm	8 Holes Ø1.2mm
FACTORY	1000CPS		800CPS		8 Holes Ø1.2mm



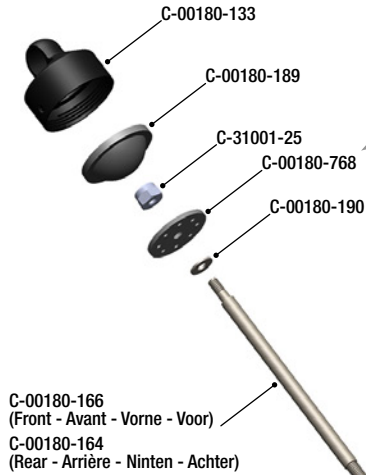
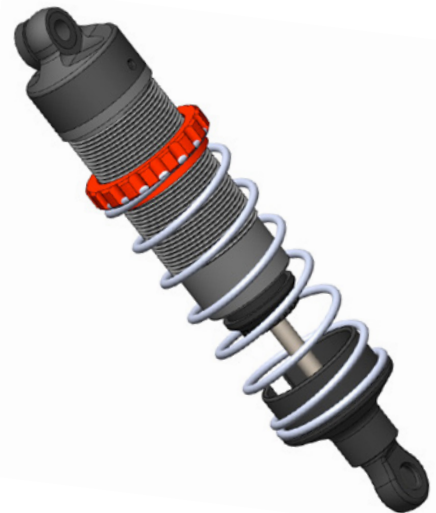


- **Do not overtighten the Shock Cap to prevent deformation of the silicone Shock Bladder.**
- *Ne serrez pas trop le capuchon de l'amortisseur pour éviter la déformation de la membrane en silicone.*
- *Ziehen Sie die Dämpferabdeckung nicht zu fest an, um eine Verformung der Silikonmembran zu vermeiden.*
- *Draai de schokkap niet te strak aan om vervorming van het siliconenmembraan te voorkomen.*

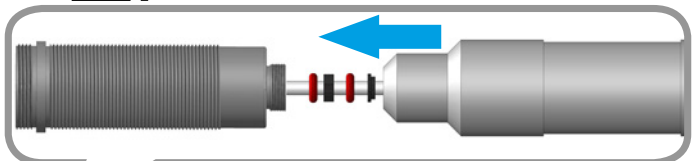
**C-00180-768 Shock Piston (8pcs)**



Shock Piston - **6 Holes 1.4**  
Shock Piston - **8 Holes 1.2**  
(Factory installed)



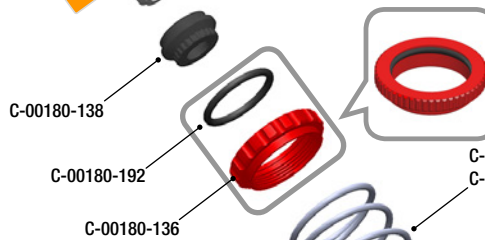
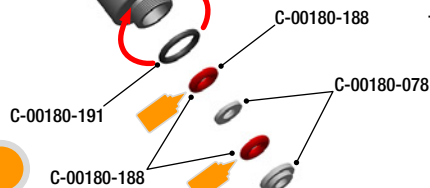
**Place all small parts on a screwdriver (Ø3mm) and push them into the shock body. All parts will be properly aligned.**



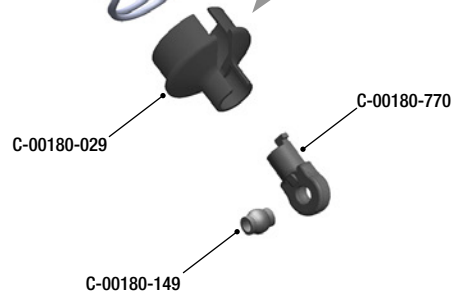
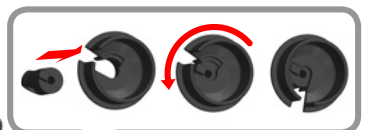
- *Placez toutes les petites pièces sur un tournevis (Ø3mm) et poussez-les dans le corps de l'amortisseur. Toutes les pièces seront correctement alignées.*
- *Setzen Sie alle Kleinteile auf einen Schraubendreher (Ø3mm) und drücken Sie sie in den Dämpferkörper. Alle Teile werden richtig ausgerichtet.*
- *Plaats alle kleine onderdelen op een schroevendraaier (Ø3mm) en duw ze in de behuizing van de schokdemper. Alle onderdelen zullen goed uitgelijnd zijn.*

C-00180-137 (Front - Avant - Vorne - Voor)  
C-00180-134 (Rear - Arrière - Ninten - Achter)

**APPLY SILICONE OIL**  
- Appliquez de l'huile silicone  
- Silikonöl auftragen  
- Breng siliconenolie aan



C-00180-291 (Front - Avant - Vorne - Voor)  
C-00180-288 (Rear - Arrière - Ninten - Achter)



## GEAR RATIO



### MOTOR PINION MOD1.0 - PIGNON MOTEUR MOD1.0 - MOTORRITZEL MOD1.0 - MOTOR PINION MOD1.0

High-performance 13T tooth pinion gear, manufactured from special steel for toughness and durability with precise tolerances and assures unparalleled concentricity. Created on a special gear machine, all pinions feature ultra-precise tooth shaping and ultra-true running for vibration-free operation. Each pinion is marked with the tooth number for easy and quick identification.



*Pignon 13 dents Haute Performance, fabriqué en acier spécial avec des tolérances précises pour garantir solidité, longévité et concentricité. Tous les pignons présentent une forme de dent ultra-précise pour un fonctionnement sans vibrations. Chaque pignon est marqué du nombre de dents pour une identification facile et rapide.*



Hochleistungs-Ritzel mit 13 Zähnen, hergestellt aus Spezialstahl mit präzisen Toleranzen, um Festigkeit, Haltbarkeit und Rundlauf zu gewährleisten. Alle Ritzel haben eine ultrapräzise Zahnform für einen vibrationsfreien Betrieb. Jedes Kettenrad ist zur schnellen und einfachen Identifizierung mit der Anzahl der Zähne gekennzeichnet.

*High-performance tandwiel 13-T, geproduceerd van speciaal staal met nauwkeurige toleranties om sterkte, duurzaamheid en concentriciteit te garanderen. Alle kettingwielen hebben een ultra-precieze tandvorm voor een trillingsvrije werking. Elk tandwiel is gemarkeerd met het aantal tanden voor een snelle en eenvoudige identificatie.*

- **Special hardened steel** - Acier spécial trempé - Spezialgehärteter Stahl - Geharde speciaal staal
- **CNC cut teeth for perfect teeth shape and concentricity** - Usiné CNC pour une forme et une concentricité parfaites des dents - CNC-gefräst für perfekte Zahnform und Rundlaufgenauigkeit - CNC gefreesd voor perfecte tandvorm en concentriciteit
- **Fits all cars with MOD1 gears (1/8 Scale)** - Convient à toutes les voitures avec des transmissions MOD1 (Echelle 1/8) - Passend für alle Fahrzeuge mit MOD1-Getriebe (Maßstab 1/8) - Past op alle auto's met MOD1 versnellingen (1/8 Schaal)
- **For 5.0mm motor shafts** - Pour les axes moteur de 5,0 mm - Für 5,0 mm Motorwellen - Voor 5,0mm motorassen



### SPEED GEAR CHART - TABLEAU DES VITESSES - DREHZAHLGANGDIAGRAMM - VERSNELLINGSTABEL

#### With Spur Gear 46T - Gear Ratio 3.31

	Km/h	Mph	Km/h	Mph	Km/h	Mph	Km/h	Mph	Km/h	Mph	Km/h	Mph	Km/h	Mph	Km/h	Mph
Gear	11T Pinion		12T Pinion		13T Pinion		14T Pinion		15T Pinion		16T Pinion		17T Pinion		18T Pinion	
46T	13,83		12,68		11,71		10,87		10,14		9,51		8,95		8,45	
4S	58	36	63	39	69	43	74	46	79	49	84	52	90	56	95	59
6S	87	54	95	59	103	64	111	69	119	74	127	79	135	84	143	89

#### With Spur Gear 52T - Gear Ratio 3.31

	Km/h	Mph	Km/h	Mph	Km/h	Mph	Km/h	Mph	Km/h	Mph	Km/h	Mph
Gear	11T Pinion		12T Pinion		13T Pinion		14T Pinion		15T Pinion		16T Pinion	
52T	15,64		14,33		13,23		12,29		11,47		10,75	
4S	51	32	56	35	61	38	65	40	70	43	75	47
6S	77	48	84	52	91	57	98	61	105	65	112	70

■ OK   
 ■ Factory fitted   
 ■ Usable but not recommended   
 ■ Not recommended, at your own risk



**Note: The speed indicated in the table is a theoretical speed for information purposes. The real speed varies according to the type of terrain, electronic equipment, atmospheric conditions, type of tyre and its diameter and other driving parameters.**

*Note: La vitesse indiquée dans le tableau est une vitesse théorique à titre indicatif. La vitesse réelle varie en fonction du type de terrain, de l'équipement électronique, des conditions atmosphériques, du type de pneu et son diamètre et d'autres paramètres de conduite.*

*Bemerkung: Die in der Tabelle angegebene Geschwindigkeit ist eine theoretische Geschwindigkeit, die nur als Referenz dient. Die tatsächliche Geschwindigkeit hängt von der Art des Geländes, der elektronischen Ausrüstung, den Wetterbedingungen, des Reifentyps und seines Durchmessers und anderen Fahrparametern ab.*

*Nota: De in de tabel aangegeven snelheid is een theoretische snelheid, uitsluitend ter referentie. De werkelijke snelheid varieert afhankelijk van het soort terrein, de elektronische apparatuur, de weersomstandigheden, het type band en zijn diameter en andere rijparameters.*



If the gear mesh is not correct, you wear out the spur gear prematurely, the transmission will make noise, give unnecessary load on the motor (higher consumption, heating of the transmission).



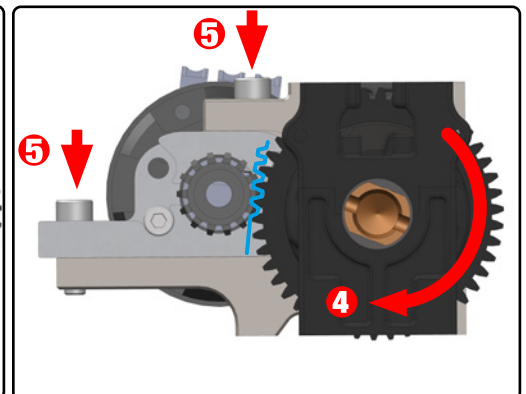
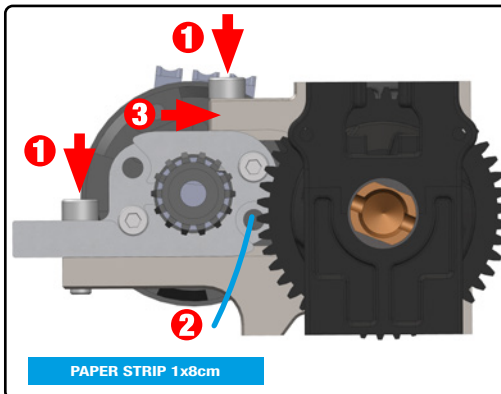
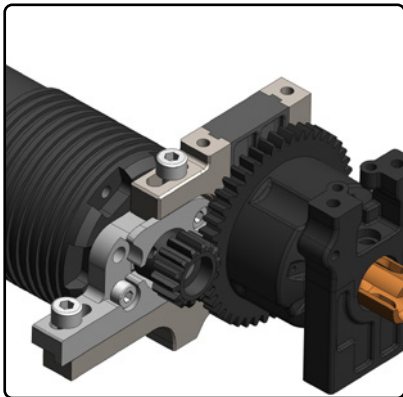
*Si l'espace entre le pignon et la couronne n'est pas correct, la couronne dentée s'use prématurément, la transmission fait du bruit et le moteur est inutilement sollicité (consommation plus élevée, échauffement de la transmission).*



Wenn der Abstand zwischen Ritzel und Tellerrad nicht stimmt, verschleißt das Zahnrad vorzeitig, das Getriebe macht Geräusche und der Motor wird unnötig belastet (höherer Verbrauch, Erwärmung des Getriebes).



*Als de afstand tussen het tandwiel en de recht tandwiel niet correct is, slijt de recht tandwiel voortijdig, maakt de transmissie lawaai en wordt de motor onnodig belast (hoger verbruik, verhitting van de transmissie).*



**1. Loosen the screws.**

*Desserrez les vis.*

Lösen Sie die Schrauben.

*Draai de schroeven los.*

**2. Insert the paper strip.**

*Insérez la bande de papier.*

Legen Sie den Papierstreifen ein.

*Plaats de papierstrook.*

**3. Push the motor against the spur gear.**

*Poussez le moteur contre la couronne dentée.*

Schieben Sie den Motor gegen das Zahnrad.

*Duw de motor tegen het recht tandwiel.*

**4. Turn the spur gear to run the paper through the teeth.**

**Stop when the paper is in the middle.**

**Make sure that the motor pinion is against the spur gear.**

*Tournez la couronne dentée pour faire passer le papier entre les dents.*

*Arrêtez lorsque le papier est au milieu.*

*Assurez-vous que le pignon du moteur est contre la couronne dentée.*

Drehen Sie das Hauptzahnrad, um das Papier durch die Zähne zu führen.

Halten Sie an, wenn sich das Papier in der Mitte befindet.

Achten Sie darauf, dass das Motorritzeln am Hauptzahnrad anliegt.

*Draai aan het rechte tandwiel om het papier door de tanden te laten lopen.*

*Stop wanneer het papier in het midden is.*

*Zorg ervoor dat het motortandwiel tegen het rechte tandwiel staat.*

**5. Maintain and tighten the fixing screws.**

*Maintenez et serrez les vis de fixation.*

Halten Sie die Befestigungsschrauben fest und ziehen Sie sie an.

*De bevestigingsschroeven aanhouden en vastdraaien.*

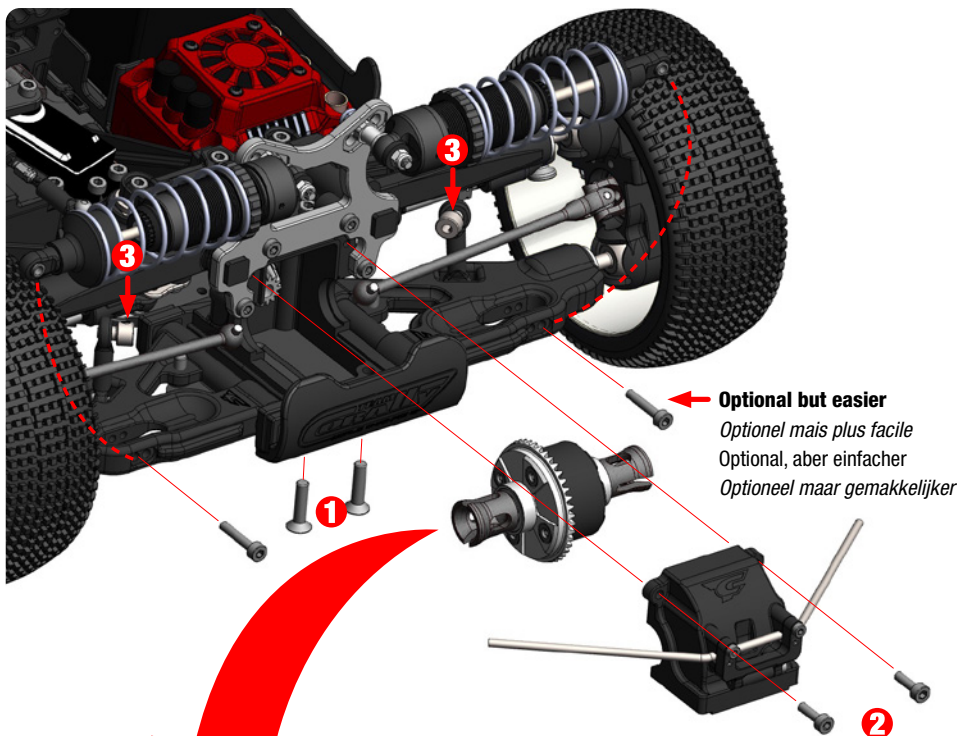


It may be necessary to replace the silicone oil every 50 runs (depends on how you drive and the type of terrain you drive on).

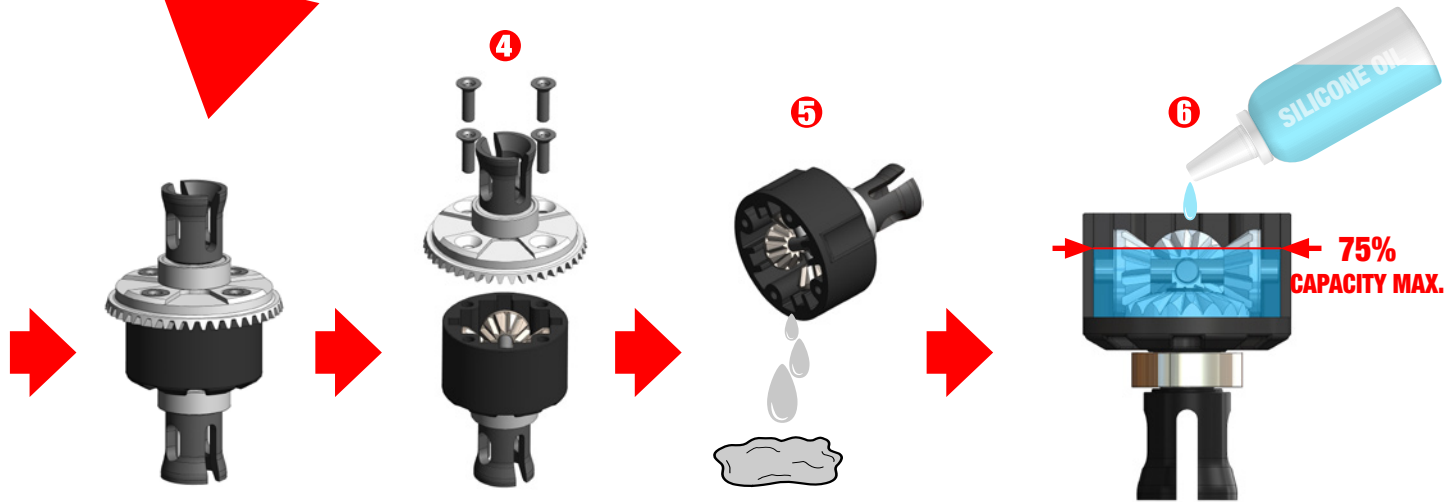
*Il peut être nécessaire de remplacer l'huile silicone toutes les 50 courses (cela dépend de votre conduite et du type de terrain sur lequel vous roulez).*

Es kann notwendig sein, das Silikonöl alle 50 Fahrten zu wechseln (abhängig von Ihrer Fahrweise und dem Gelände, auf dem Sie fahren).

*Het kan nodig zijn de siliconenolie om de 50 ritten te vervangen (afhankelijk van uw rijstijl en het soort terrein waarop u rijdt).*



- **1. Remove 2 screws under the chassis.**  
*Retirez 2 vis sous le châssis.*  
Entfernen Sie 2 Schrauben unter dem Chassis.  
Verwijder 2 schroeven onder het chassis.
- **2. Remove the screws from the differential cover.**  
*Retirez les vis du couvercle du différentiel.*  
Entfernen Sie die Schrauben des Differentialdeckels.  
Verwijder de schroeven van het deksel van het differentieel.
- **3. Unscrew the ANTI-ROLL BAR Screws.**  
*Dévissez les vis de la barre anti-roulis.*  
Lösen Sie die ANTI-ROLL BAR-Schrauben.  
Schroef de ANTI-ROLL BAR-schroeven los.
- **4. Unscrew the differential. (4x F/H M3x10)**  
*Ouvrir le différentiel.*  
Öffnen Sie das Differential.  
Open het differentieel.
- **5 Drain the silicone oil from the differential.**  
*Vidangez l'huile de silicone du différentiel.*  
Lassen Sie das Silikonöl aus dem Differential ab.  
Laat de siliconenolie uit het differentieel lopen.
- **6 Fill with new silicone oil (75% capacity max.)**  
*Remplir avec de l'huile silicone neuve (75% max.)*  
Füllen Sie neues Silikonöl ein (max. 75% Füllmenge).  
Vullen met nieuwe siliconenolie (75% capaciteit max.)



**Perform the same maintenance operation for the Centre and Rear differentials.**

*Effectuez la même opération d'entretien pour les différentiels central et arrière.*

Führen Sie die gleichen Wartungsarbeiten für das mittlere und hintere Differential durch.

*Doe dezelfde onderhoudswerkzaamheden voor het midden- en achterdifferentieel.*

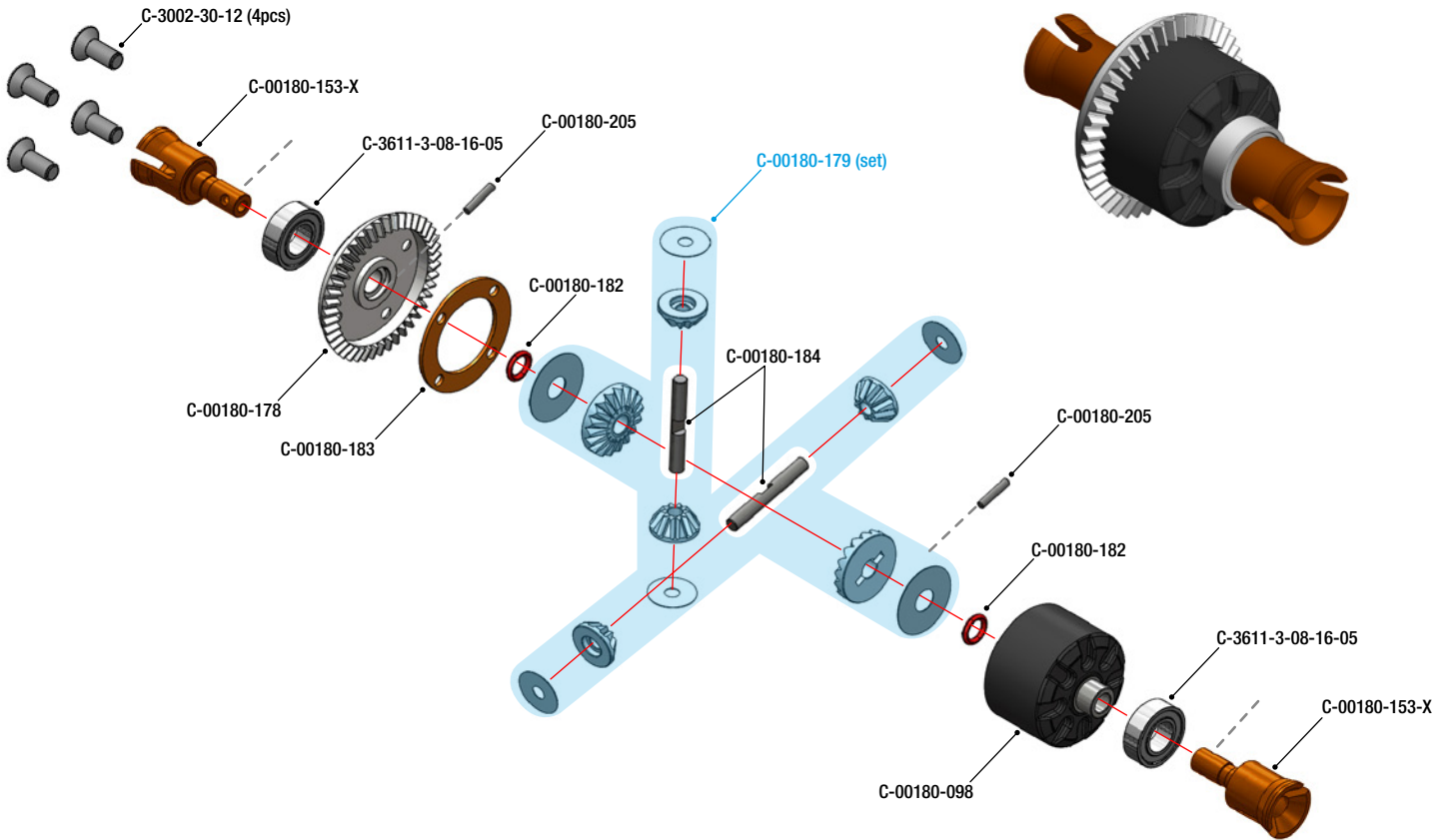


	FRONT DIFF	CENTRE DIFF	REAR DIFF
TRACK USE	100.000CPS	100.000CPS	50.000CPS
OFF-ROAD	10.000CPS	10.000CPS	7.500CPS
FACTORY	30.000CPS	100.000CPS	20.000CPS

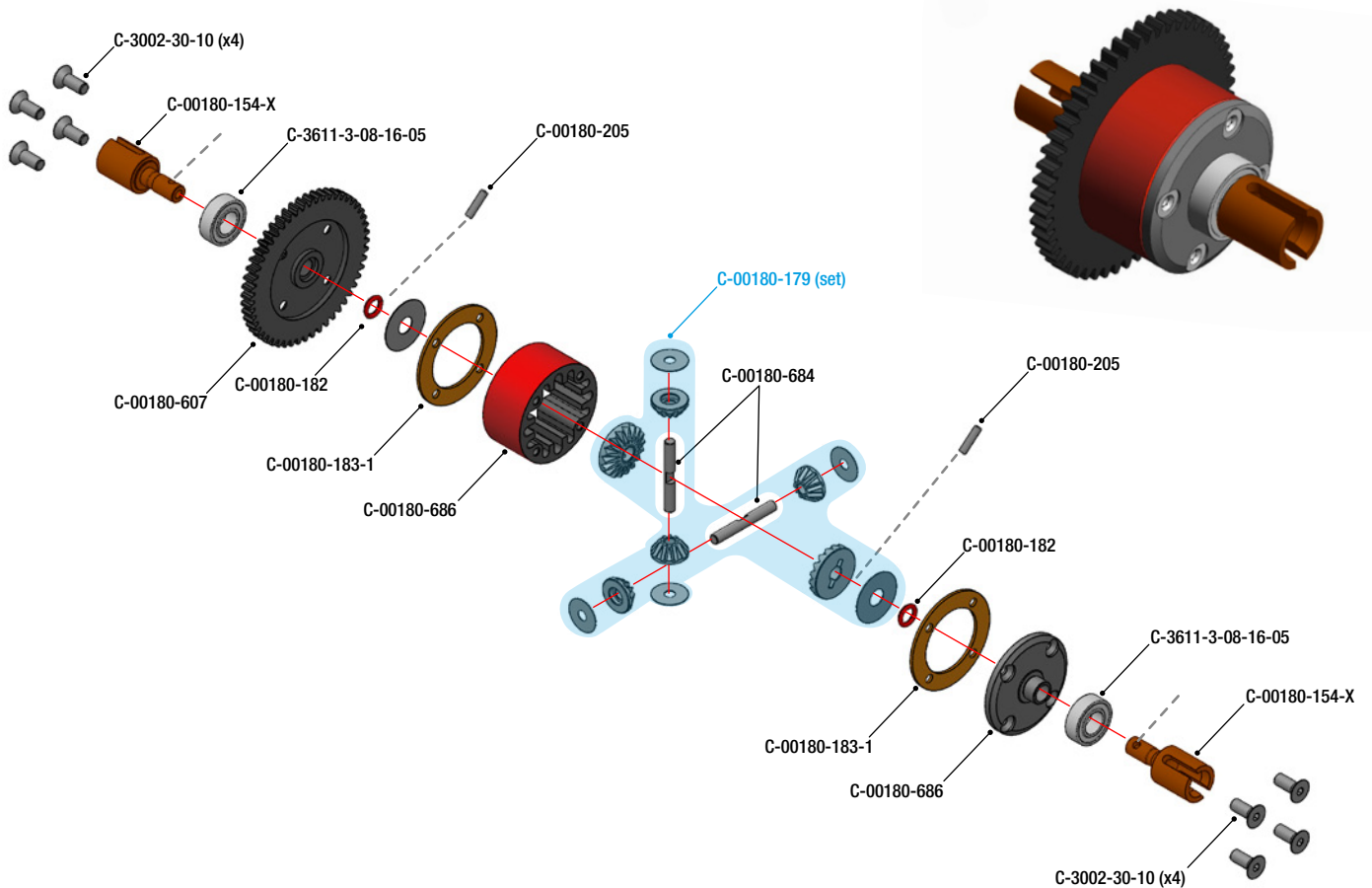
[www.corally.com/Chemicals/Silicone-Oils/](http://www.corally.com/Chemicals/Silicone-Oils/)

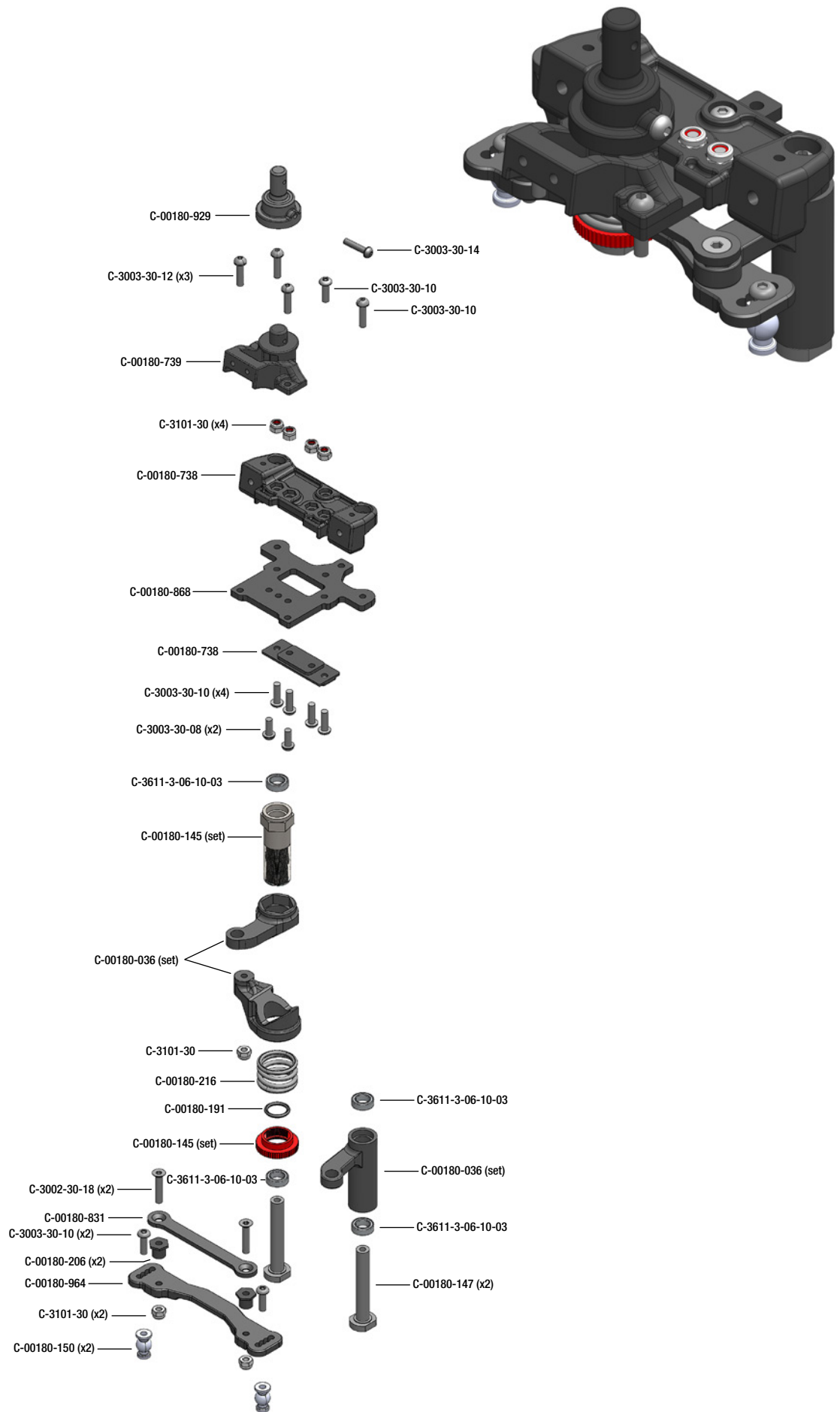


**FRONT & REAR DIFFERENTIAL - DIFFÉRENTIEL AVANT ET ARRIÈRE - DIFFERENTIAL VORNE UND HINTEN - VOOR & ACHTER DIFFERENTIEEL**

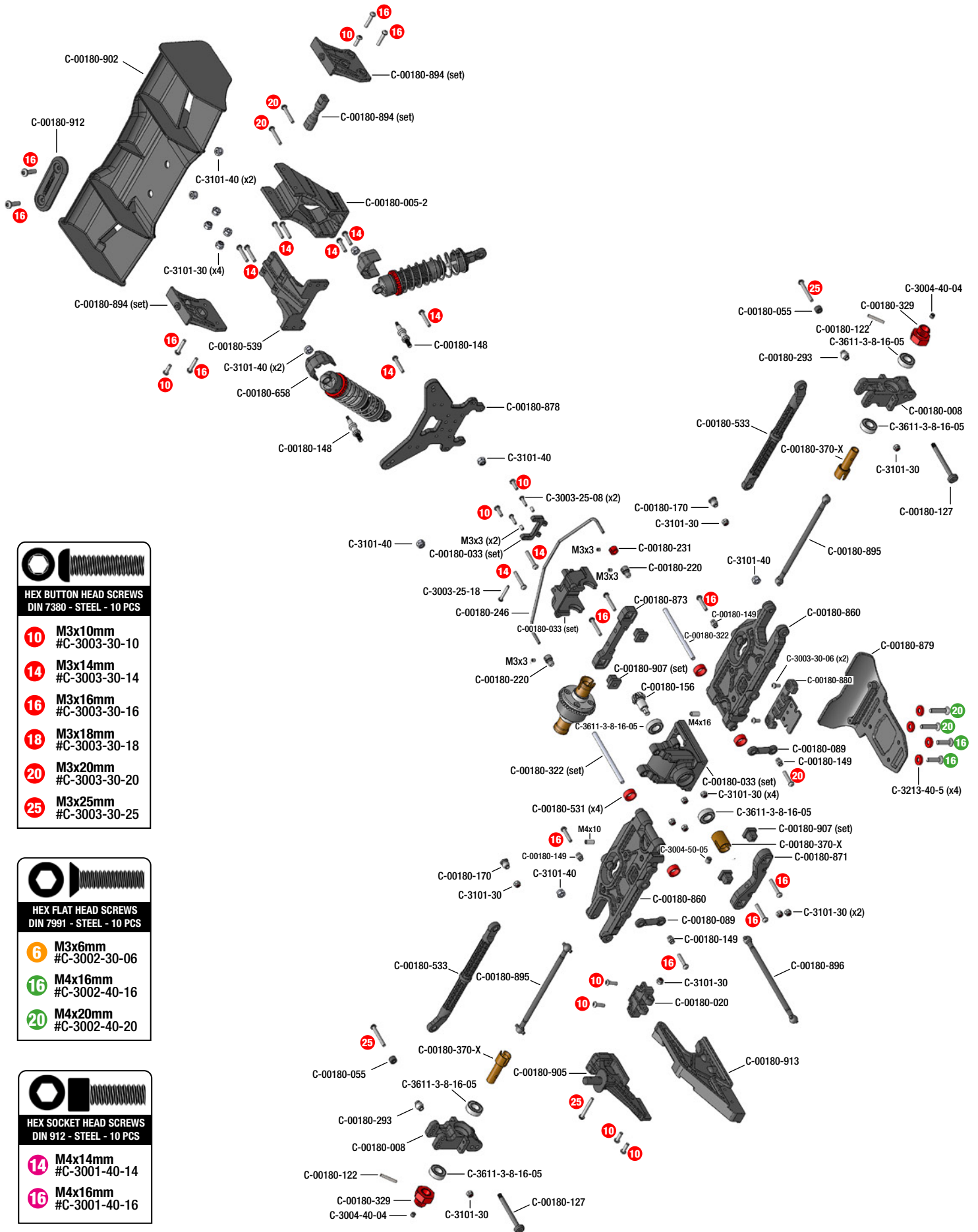


**CENTRE DIFFERENTIAL - DIFFÉRENTIEL CENTRAL - ZENTRALDIFFERENTIAL - CENTERDIFFERENTIEEL**















C-00180-004-1  
Battery Strap - Hook & Loop  
- 2 pcs



C-00180-005-2  
Wing Mount - Adjustable -  
Composite - 1 Set



C-00180-008  
Hub - Rear - Composite - 1 pc



C-00180-009-1  
HD Steering Block - Pivot Ball Cup  
(2) - Composite - 1 set



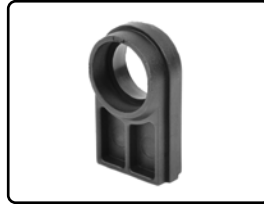
C-00180-013  
Servo Mount - Receiver Box -  
Composite - 1 Set



C-00180-018  
Centre Diff Bulkhead - Compos-  
ite - 1 Set



C-00180-020  
Gearbox Brace Mount A - Rear -  
Composite - 1 pc



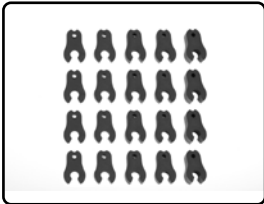
C-00180-023  
Motor Mount Centre Diff Insert -  
Composite - 1 pc



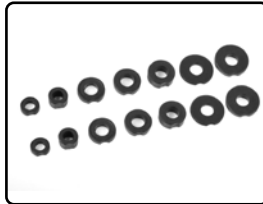
C-00180-033  
Gearbox Case Set - Composite  
- 1 Set



C-00180-036  
Steering Bellcrank - Parts A-B-C  
- Composite - 1 Set



C-00180-109  
Caster Clips Set - 1 to 4.5mm  
- 1 Set



C-00180-055  
Suspension Arm Shim - Com-  
posite - 1 Set



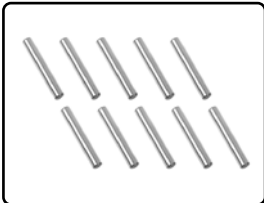
C-00180-044  
Ball Joint 6mm - Composite -  
2 pcs



C-00180-089  
Anti-Roll Bar Ball Cups - Com-  
posite - 4 pcs



C-00180-117  
Pivot Ball Adjusting Nut - Alu-  
minium - 4 pcs



C-00180-122  
Pin 2.5x17mm - Steel - 10 pcs



C-00180-123  
Pivot Ball - Steel - 4 pcs



C-00180-127  
Hinge Pin - Outer - Steel - 2 pcs



C-00180-129  
Turnbuckle - M3 - 35mm -  
Steel - 2 pcs



C-00180-145  
Servo Saver Shaft w/ Nut -  
Aluminium - 1 pc



C-00180-147  
Servo Saver Post - Steel - 2 pcs



C-00180-148  
Shock Screw - Steel - 4 pcs



C-00180-149  
Ball - 5.8mm - Steel - 4 pcs



C-00180-150  
Ball Shouldered - 6.8mm - Steel  
- 4 pcs



C-00180-170  
Ball - 6.8mm - Steel - 2 pcs



C-00180-171  
Threaded Ball - 6mm - Steel -  
2 pcs



C-00180-176  
Motor Bulkhead - Aluminium  
- 1 pc



C-00180-177  
Motor Mount - Aluminium - 1 pc



C-00180-197  
Anti-Roll Bar - 2.4mm - Front  
- 1 pc



C-00180-200  
Anti-Roll Bar - 2.4mm - Rear  
- 1 pc



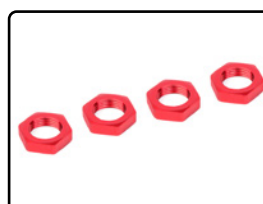
C-00180-206  
Steering Rack Bushing - Steel  
- 2 pcs



C-00180-216  
Servo Saver Spring - 1 pc



C-00180-220  
Ball End 5.8mm - for Anti Roll  
Bar - Steel - 4 pcs



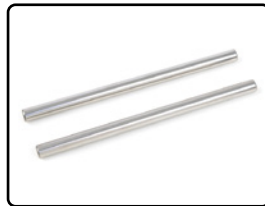
C-00180-230  
Wheel Nut - Aluminium -  
Ribbed - 4 pcs



C-00180-231  
Collar - for Anti-roll Bar - Alu-  
minium - 1 pc



C-00180-293  
Ball 6.8mm - Steel - 4 pcs



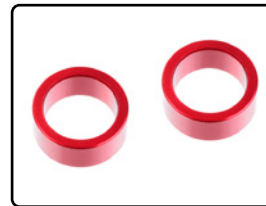
C-00180-322  
Suspension Arm Pivot Pin - Lower Inner - Fr/Re - Steel - 2 pcs



C-00180-329  
Wheel Hex Adapter - Wide RTR - Aluminium - 2 pcs



C-00180-372  
Servo Arm - Steering - Alu - 1 pc



C-00180-531  
HDA Suspension Arm Insert - Inner - Aluminum - Red - 2 pcs



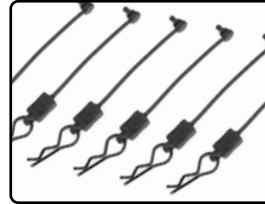
C-00180-532  
HDA Susp. Arm Insert - Outer - Spacer 1.5mm - Alu. - Red - 2 pcs



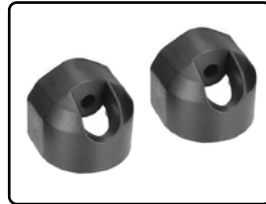
C-00180-562  
Center Diff Spacer - 4mm - Composite - 1 pc



C-00180-615  
Battery ESC Tray - V2 - Large - Composite - 1 Pc



C-00180-614  
Body Clip Retainer w/ Body clip - Black - 6 pcs



C-00180-658  
Shock absorber cover - Composite - 4 pcs



C-00180-722  
Center Diff Plate - Spur Gear Cover - Composite - 1 pc



C-00180-738  
Arm Holder for Steering Deck - Composite - 1 Pc



C-00180-739  
Steering Deck Holder - w/ Body Post - Composite - 1 pc



C-00180-831  
Steering Rack - Dual Stiffener - Aluminium - 1 Pc



C-00185-856  
Off-Road 1/8 XL Tires - Low Profile - Glued on Rims - 1 pair



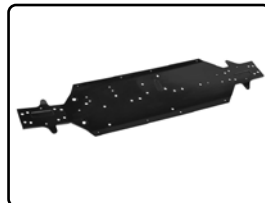
C-00180-859  
Suspension Arm HDA-3 - Lower - Front - Composite - 1 pc



C-00180-860  
Suspension Arm HDA-3 - Lower - Rear - Composite - 1 pc



C-00180-861  
Suspension Arm HDA-3 - Upper - Front - Composite - 1 pc



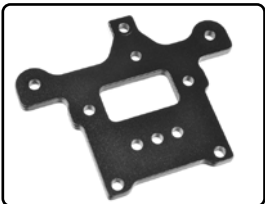
C-00180-862  
Chassis - Buggy XL - Aluminum - 1 pc



C-00180-863  
Side Guards - Left-Right - Composite - 1 Set



C-00180-867  
Chassis Brace - Center Upper - Aluminum 3mm - Black - 1 pc



C-00180-868  
Steering Deck - Aluminum - Black - 1 Pc



C-00180-869  
Chassis Brace Cover - Composite - 1 pc



C-00180-870  
Chassis Brace - Center Lower - Aluminum 3mm - Black - 1 pc



C-00180-871  
Suspension Arm Mount HD - RE-FR - 8mm - Aluminum - Black - 1 pc



C-00180-872  
Suspension Arm Mount HD - FR-RE - 8mm - Aluminum - Black - 1 pc



C-00180-873  
Suspension Arm Mount HD - RE-RE - 8mm - Aluminum - Black - 1 pc



C-00180-874  
Suspension Arm Mount HD - FR-FR - 8mm - Aluminum - Black - 1 pc



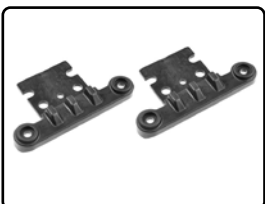
C-00180-877  
Shock Tower - 5mm - Aluminium - Front - 1 pc



C-00180-878  
Shock Tower - 5mm - Aluminium - Rear - 1 pc



C-00180-879  
Bumper w/ Skid Plate - Rear - Composite - 1 pc



C-00180-880  
Gearbox Cover - Composite - 2 pcs



C-00180-882  
Bumper w/ Skid Plate - Rear - Composite - 1 pc



C-00180-891  
Hinge Pin - Front Upper Arm - Steel - 2 pcs



C-00180-894  
Wing Support - Left - Right - Composite - 1 Set

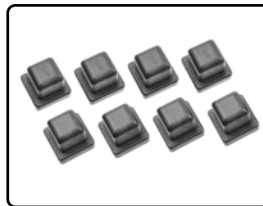




C-00180-902  
Wing XL- Composite - 1 pc



C-00180-905  
Body Post / Shock Tower Brace - Composite - 1 pc



C-00180-907  
Arm Holder Inserts - Composite - 0°, 1° - Set 8 pcs



C-00180-912  
Wing Washer - XL - Composite - 1 Pc



C-00180-913  
Chassis Brace - Rear - Composite - 1 pc



C-00180-914  
Chassis Brace - Front - Composite - 1 pc



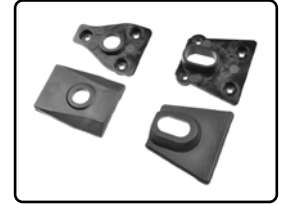
C-00180-915  
Winglets for HDA-3 Front Upper Arm - Left - Right - 1 Set



C-00180-921  
HD Camber Links - HDA-3 - Front - Composite - 2 pcs



C-00180-922  
HD Camber Links - HDA-3 - Rear - Composite - 2 pcs



C-00180-924  
Body Post Protection Plates - 1 Set



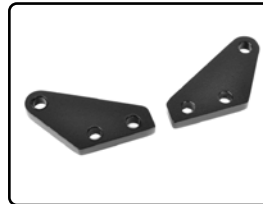
C-00180-929  
Body Post Extension - Long - Composite - 1 pc



C-00180-964  
Steering Rack - MT23 - 7075 T6 - 3mm - Made in Italy - 1 pc



C-00180-1039  
Front Lexan Support - Composite - 1 pc



C-00180-1064  
Steering Block Arms - Aluminum - 2 pcs



C-52022  
Digital Servo - CRHV-7225-MG - High Voltage - Metal Gear



C-54055  
Brushless Motor - Kuron 825 - 4-Pole - 2050 KV - Sensorless



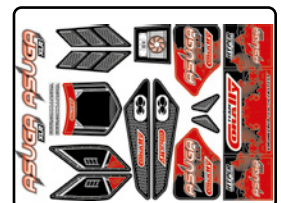
C-72713  
M1.0 Pinion - Hardened Steel - 13 Teeth - Shaft Dia. 5mm



C-54011  
Speed Controller - TOROX 185 - Brushless - 2-6S



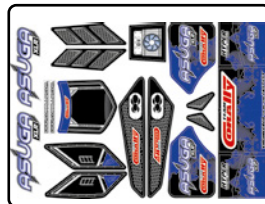
C-00180-857-R  
Body - Buggy XL - Polycarbonate - Painted RED - 1 pc



C-00180-858-R  
Body Decal Sheet - Asuga XLB - RED - 1 pc



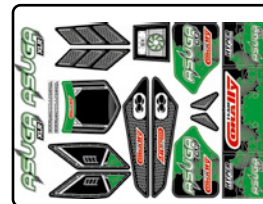
C-00180-857-B  
Body - Buggy XL - Polycarbonate - Painted BLUE - 1 pc



C-00180-858-B  
Body Decal Sheet - Asuga XLB - BLUE - 1 pc



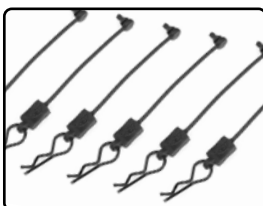
C-00180-857-G  
Body - Buggy XL - Polycarbonate - Painted GREEN - 1 pc



C-00180-858-G  
Body Decal Sheet - Asuga XLB - GREEN - 1 pc



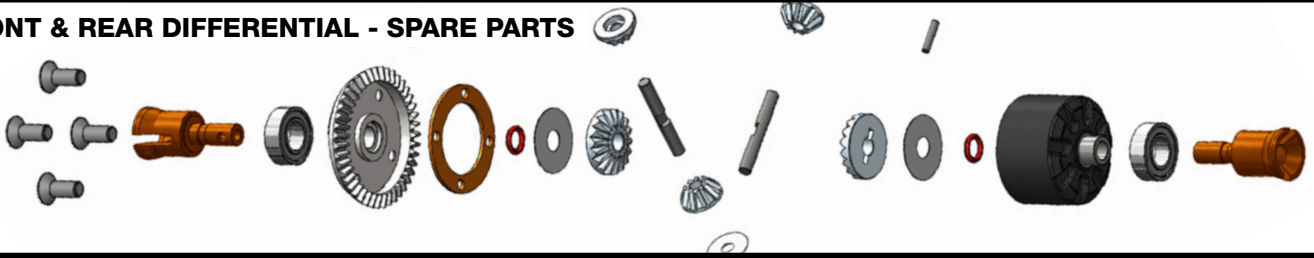
C-00180-857  
Body - Buggy XL - Polycarbonate - CLEAR - 1 pc



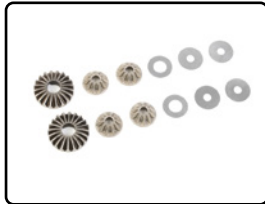
C-00180-614  
Body Clip Retainer w/ Body clip - Black - 6 pcs



**FRONT & REAR DIFFERENTIAL - SPARE PARTS**



C-00180-178  
Diff. Bevel Gear 43T - CNC Cut  
Steel - 1 pc



C-00180-179  
Planetary Diff. Gears - Steel -  
1 Set



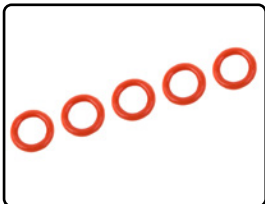
C-00180-184  
Gear Diff. Pin - Steel - 2 pcs



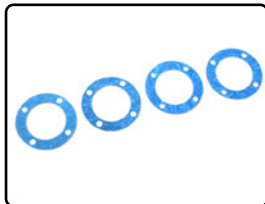
C-00180-205  
Diff. Outdrive Pin - 2x11,8mm -  
Steel - 4 pcs



C-00180-098  
Diff Case - FR-RE - Composite  
- 1 pc



C-00180-182  
O-Ring - Silicone - 5x8mm -  
5 pcs



C-00180-183  
Diff. Gasket - 4 pcs



C-00180-156  
Bevel Pinion 13T - CNC Cut-  
Steel - 1 pc



C-00180-153-X  
PRO Diff. Outdrive Cup - Swiss  
Spring Steel - 2 pcs



C-00180-155-X  
PRO Pinion Outdrive Cup -  
Swiss Spring Steel - 2 pcs



C-00180-370-X  
PRO Drive Axle - Rear - Swiss  
Spring Steel - 2 pcs



C-00180-895  
Dogbones - 112mm - Rear -  
Steel - 2 pcs

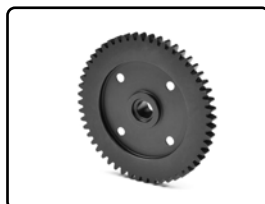


C-00180-898  
Universal Joint Drive Shaft -  
113,5mm - Front - 1 pc

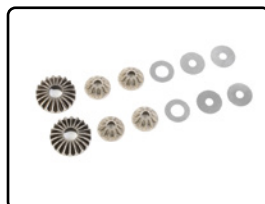
**CENTRE DIFFERENTIAL - SPARE PARTS**



C-00180-686  
Diff Case - Centre - Aluminium.  
- 1 pc



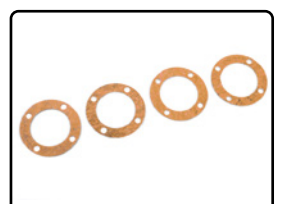
C-00180-607  
Spur Gear 52T - Steel - 1 pc



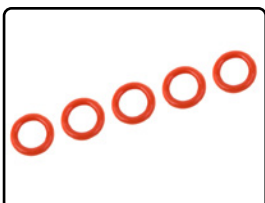
C-00180-179  
Planetary Diff. Gears - Steel -  
1 Set



C-00180-684  
Gear Diff Pin - 3.5x29.8mm -  
for C-00180-686 - Steel - 4 pcs



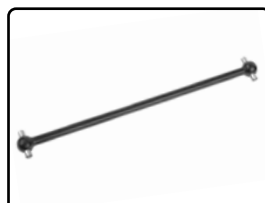
C-00180-183-1  
Central Diff. Gasket - 4 pcs



C-00180-182  
O-Ring - Silicone - 5x8mm -  
5 pcs



C-00180-154-X  
PRO Centre Diff. Outdrive Cup -  
Swiss Spring Steel - 2 pcs



C-00180-896  
Drive Shaft - Centre - Rear -  
109mm - Steel - 1 pc

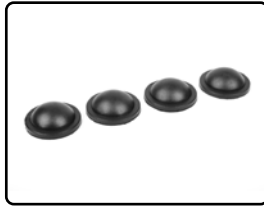


C-00180-897  
Drive Shaft - Centre - Front -  
134mm - Steel - 1 pc

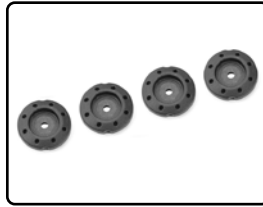
**SHOCK ABSORBER - SPARE PARTS**



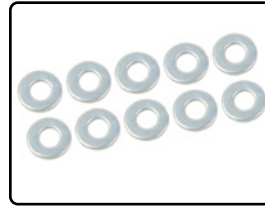
C-00180-133  
Shock Cap - Aluminium - Hard Anodised - 2 pcs



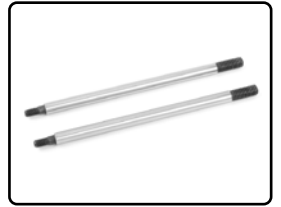
C-00180-189  
Shock Bladders - Silicone - 4 pcs



C-00180-767  
Shock Piston Heavy Duty - 8x1.2mm thick - 4 pcs



C-00180-190  
Shock Washer - 2.5x6x0.5mm - Steel - 10 pcs



C-00180-164  
Shock Shaft - 66mm - Rear - Steel - 2 pcs



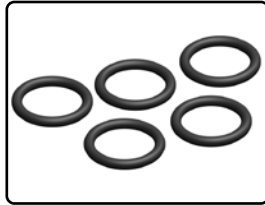
C-00180-166  
Shock Shaft - 61mm - Front - Steel - 2 pcs



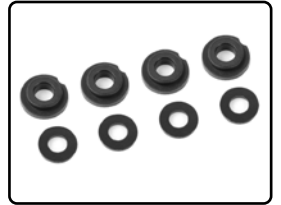
C-00180-134  
Shock Body - Rear - Aluminium - Hard Anodised - 1 pc



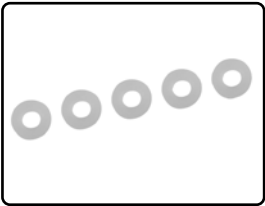
C-00180-137  
Shock Body - Front - Aluminium - Hard Anodised - 1 pc



C-00180-191  
O-Ring - Silicone - 9x12mm - 5 pcs



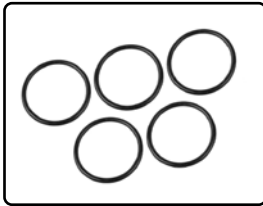
C-00180-078  
Shock Body Insert - Washer - Composite - 1 set



C-00180-188  
O-Ring - Silicone - 4x8mm - 5 pcs



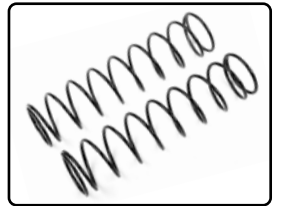
C-00180-138  
Shock Cap - Lower - Composite - 2 pcs



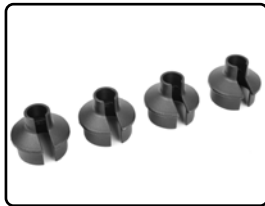
C-00180-192  
O-Ring - Silicone - 16.2x19.8mm - 5 pcs



C-00180-136  
Shock Collar - Aluminium - Hard Anodised - 2 pcs



Shock Spring - 2 pcs  
C-00180-287 • REAR - MED.  
C-00180-288 • REAR - HARD  
C-00180-290 • FRONT - MED  
C-00180-291 • FRONT - HARD



C-00180-029  
Shock Spring Cup - Composite - 4 pcs



C-00180-770  
HD Shock End - Short - Composite - 4 pcs

**OPTION PARTS - PIÈCES D'OPTION - OPTIONSTEILE - OPTIES**



C-00180-892  
Turnbuckle - M5 - 70mm - S2 Springsteel - 2 pcs



C-00180-903  
HD Steering Ball Joint - Composite - 1 set



C-00180-316  
Shock Cap - Lower - Aluminium - 2 pcs



C-00180-854  
Gearbox Case Set - Swiss Made 7075 T6 - Black - Set



M1.0 Pinion - Hardened Steel - Shaft Diameter 5mm  
C-72711 • 11 Teeth  
C-72712 • 12 Teeth  
C-72713 • 13 Teeth  
C-72714 • 14 Teeth  
C-72715 • 15 Teeth



C-52015  
OC-27 HV Digital Servo - 5-8.4V - IP-67 - Core DC Motor - Steel Gear



C-52001  
High Speed Servo - High Voltage - Coreless Motor - Titanium Gear

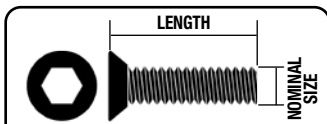


C-00180-157  
Wing Washer - Lightened - Aluminum - 2 pcs



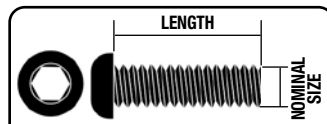
C-00180-410  
Xtreme Diff Case - 30mm - FR / RE - Made in Italy - 1 pc

## STEEL SCREWS



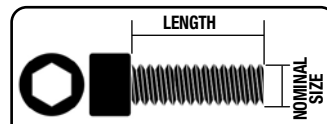
**HEX FLAT HEAD SCREWS**  
DIN 7991 - STEEL - 10 PCS

REF	NOMINAL SIZE	LENGTH MM
C-3002-25-06	M2.5	6
C-3002-25-08	M2.5	8
C-3002-25-10	M2.5	10
C-3002-25-12	M2.5	12
C-3002-25-16	M2.5	16
C-3002-25-18	M2.5	18
C-3002-25-20	M2.5	20
C-3002-30-06	M3	6
C-3002-30-08	M3	8
C-3002-30-10	M3	10
C-3002-30-12	M3	12
C-3002-30-14	M3	14
C-3002-30-16	M3	16
C-3002-30-18	M3	18
C-3002-30-20	M3	20
C-3002-30-25	M3	25
C-3002-30-35	M3	35
C-3002-40-08	M4	8
C-3002-40-10	M4	10
C-3002-40-12	M4	12
C-3002-40-14	M4	14
C-3002-40-16	M4	16
C-3002-40-18	M4	18
C-3002-40-20	M4	20
C-3002-40-25	M4	25
C-3002-40-30	M4	30



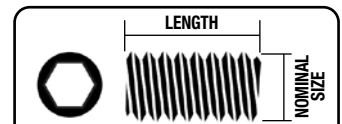
**HEX BUTTON HEAD SCREWS**  
DIN 7380 - STEEL - 10 PCS

REF	NOMINAL SIZE	LENGTH MM
C-3003-25-06	M2.5	6
C-3003-25-08	M2.5	8
C-3003-25-10	M2.5	10
C-3003-25-12	M2.5	12
C-3003-25-16	M2.5	16
C-3003-25-18	M2.5	18
C-3003-25-20	M2.5	20
C-3003-30-06	M3	6
C-3003-30-08	M3	8
C-3003-30-10	M3	10
C-3003-30-12	M3	12
C-3003-30-14	M3	14
C-3003-30-16	M3	16
C-3003-30-18	M3	18
C-3003-30-20	M3	20
C-3003-30-25	M3	25
C-3003-30-35	M3	35
C-3003-40-08	M4	8
C-3003-40-10	M4	10
C-3003-40-12	M4	12
C-3003-40-14	M4	14
C-3003-40-16	M4	16
C-3003-40-18	M4	18
C-3003-40-20	M4	20
C-3003-40-25	M4	25
C-3003-40-30	M4	30



**HEX SOCKET HEAD SCREWS**  
DIN 912 - STEEL - 10 PCS

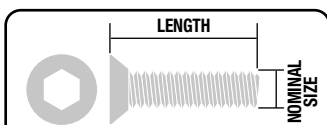
REF	NOMINAL SIZE	LENGTH MM
C-3000-25-06	M2.5	6
C-3000-25-08	M2.5	8
C-3000-25-10	M2.5	10
C-3000-25-12	M2.5	12
C-3000-25-16	M2.5	16
C-3000-25-18	M2.5	18
C-3000-25-20	M2.5	20
C-3000-30-06	M3	6
C-3000-30-08	M3	8
C-3000-30-10	M3	10
C-3000-30-12	M3	12
C-3000-30-14	M3	14
C-3000-30-16	M3	16
C-3000-30-18	M3	18
C-3000-30-20	M3	20
C-3000-30-25	M3	25
C-3000-30-35	M3	35
C-3000-40-08	M4	8
C-3000-40-10	M4	10
C-3000-40-12	M4	12
C-3000-40-14	M4	14
C-3000-40-16	M4	16
C-3000-40-18	M4	18
C-3000-40-20	M4	20
C-3000-40-25	M4	25
C-3000-40-30	M4	30



**HEX SET SCREWS**  
DIN 916 - STEEL - 10 PCS

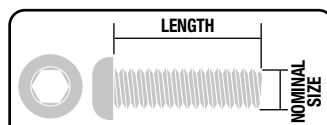
REF	NOMINAL SIZE	LENGTH MM
C-3004-30-03	M3	3
C-3004-30-05	M3	5
C-3004-30-08	M3	8
C-3004-30-10	M3	10
C-3004-30-12	M3	12
C-3004-30-20	M3	20
C-3004-40-04	M4	4
C-3004-40-06	M4	6
C-3004-40-08	M4	8
C-3004-40-10	M4	10
C-3004-40-12	M4	12
C-3004-50-04	M5	4
C-3004-50-05	M5	5

## TITANIUM SCREWS



**HEX FLAT HEAD SCREWS**  
TITANIUM - 10 PCS

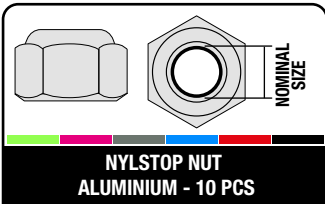
REF	NOMINAL SIZE	LENGTH MM
C-3022-30-06	M3	6
C-3022-30-08	M3	8
C-3022-30-10	M3	10
C-3022-30-12	M3	12
C-3022-30-14	M3	14
C-3022-30-16	M3	16
C-3022-30-18	M3	18
C-3022-30-20	M3	20
C-3022-40-08	M4	8
C-3022-40-10	M4	10
C-3022-40-12	M4	12
C-3022-40-16	M4	16
C-3002-40-20	M4	20



**HEX BUTTON HEAD SCREWS**  
TITANIUM - 10 PCS

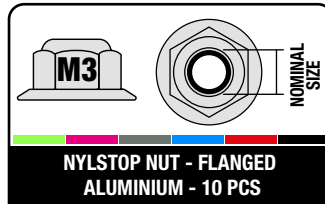
REF	NOMINAL SIZE	LENGTH MM
C-3023-30-06	M3	6
C-3023-30-08	M3	8
C-3023-30-10	M3	10
C-3023-30-12	M3	12
C-3023-30-16	M3	16
C-3023-30-20	M3	20
C-3023-30-25	M3	25
C-3023-40-06	M4	6
C-3023-40-08	M4	8
C-3023-40-10	M4	10
C-3023-40-12	M4	12
C-3023-40-16	M4	16
C-3023-40-20	M4	20
C-3023-40-25	M4	25

## NUTS



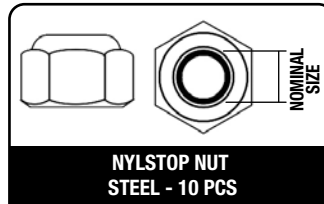
**NYLSTOP NUT  
ALUMINIUM - 10 PCS**

REF	NOMINAL SIZE	COLOR
C-3106-20-0	M2	Gold
C-3106-20-1	M2	Green
C-3106-20-2	M2	Purple
C-3106-20-3	M2	Gun
C-3106-20-4	M2	Blue
C-3106-20-5	M2	Red
C-3106-20-6	M2	Black
C-3106-30-0	M3	Gold
C-3106-30-1	M3	Green
C-3106-30-2	M3	Purple
C-3106-30-3	M3	Gun
C-3106-30-4	M3	Blue
C-3106-30-5	M3	Red
C-3106-30-6	M3	Black
C-3106-40-0	M4	Gold
C-3106-40-1	M4	Green
C-3106-40-2	M4	Purple
C-3106-40-3	M4	Gun
C-3106-40-4	M4	Blue
C-3106-40-5	M4	Red
C-3106-40-6	M4	Black
C-3106-50-0	M5	Gold
C-3106-50-1	M5	Green
C-3106-50-2	M5	Purple
C-3106-50-3	M5	Gun
C-3106-50-4	M5	Blue
C-3106-50-5	M5	Red
C-3106-50-6	M5	Black



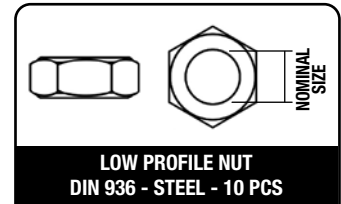
**NYLSTOP NUT - FLANGED  
ALUMINIUM - 10 PCS**

REF	NOMINAL SIZE	COLOR
C-3107-30-0	M3	Gold
C-3107-30-1	M3	Green
C-3107-30-2	M3	Purple
C-3107-30-3	M3	Gun
C-3107-30-4	M3	Blue
C-3107-30-5	M3	Red
C-3107-30-6	M3	Black
C-3107-40-0	M4	Gold
C-3107-40-1	M4	Green
C-3107-40-2	M4	Purple
C-3107-40-3	M4	Gun
C-3107-40-4	M4	Blue
C-3107-40-5	M4	Red
C-3107-40-6	M4	Black
C-3107-50-0	M5	Gold
C-3107-50-1	M5	Green
C-3107-50-2	M5	Purple
C-3107-50-3	M5	Gun
C-3107-50-4	M5	Blue
C-3107-50-5	M5	Red
C-3107-50-6	M5	Black



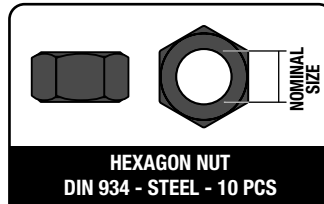
**NYLSTOP NUT  
STEEL - 10 PCS**

REF	NOMINAL SIZE	COLOR
C-3101-20-6	M2	Black
C-3101-25	M2.5	Silver
C-3101-25-6	M2.5	Black
C-3101-30	M3	Silver
C-3101-30-6	M3	Black
C-3101-40	M4	Silver
C-3101-40-6	M4	Black



**LOW PROFILE NUT  
DIN 936 - STEEL - 10 PCS**

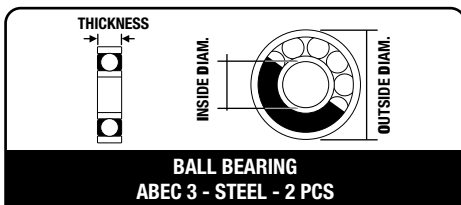
REF	NOMINAL SIZE	COLOR
C-3104-40	M4	Silver
C-3104-50	M5	Silver



**HEXAGON NUT  
DIN 934 - STEEL - 10 PCS**

REF	NOMINAL SIZE	COLOR
C-3103-20-6	M2	Black
C-3103-25-6	M2.5	Black
C-3103-30-6	M3	Black
C-3103-40-6	M4	Black
C-3103-50-6	M5	Black

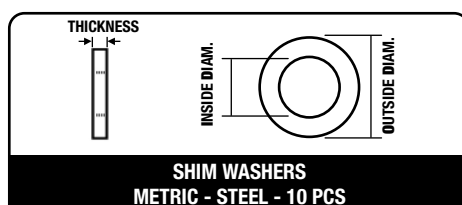
## BALL BEARINGS



**BALL BEARING  
ABEC 3 - STEEL - 2 PCS**

REF	ID MM	OD MM	TH MM
C-3611-3-05-08-03	5	8	3
C-3611-3-05-10-04	5	10	4
C-3611-3-06-10-03	6	10	3
C-3611-3-08-16-05	8	16	5
C-3611-3-10-15-04	10	15	4
C-3611-3-12-21-05	12	21	5

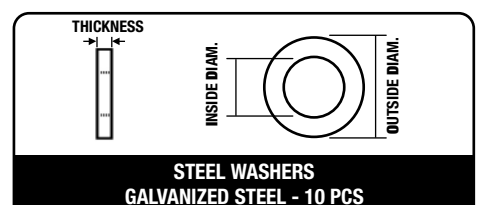
## SHIMS



**SHIM WASHERS  
METRIC - STEEL - 10 PCS**

REF	ID MM	OD MM	TH MM
C-3301-04-06-01	4	6	0.1
C-3301-06-08-01	6	8	0.1
C-3301-08-10-01	8	10	0.1
C-3301-13-16-01	13	16	0.1

## STEELWASHERS



**STEEL WASHERS  
GALVANIZED STEEL - 10 PCS**

REF	ID MM	OD MM	TH MM
C-3201-30	3.2	7	0.5
C-3201-40	4.3	9	0.8
C-3201-60	6.4	12	1.6



**Discover our range of practical plastic boxes  
with a selection of the most commonly used Screws, Nuts, Shims, Washers.**



**C-38500**  
Screw Set M3 - Hex Button Head - DIN 7380 - Steel Black - 10.9 Grade - 15 Sizes - 375 pcs



**C-38501**  
Screw Set M4 - Hex Button Head - DIN 7380 - Steel Black - 10.9 Grade - 15 Sizes - 265 pcs



**C-38505**  
Screw Set M3 - Hex Flat Head - DIN 7991 - Steel Black - 10.9 Grade - 15 Sizes - 375 pcs



**C-38506**  
Screw Set M4 - Hex Flat Head - DIN 7991 - Steel Black - 10.9 Grade - 15 Sizes - 265 pcs



**C-38510**  
Screw Set M3 - Hex Socket Head - DIN912 - Steel Black - 12.9 Grade - 15 Sizes - 375 pcs



**C-38511**  
Screw Set M4 - Hex Socket Head - DIN912 - Steel Black - 12.9 Grade - 15 Sizes - 265 pcs



**C-38515**  
Screw Set - Set Screws - M3 - M4 - M5 - DIN 916 - Steel Black - 12.9 Grade - 10 Sizes - 370 pcs



**C-38516**  
Nuts - Lock Nuts - Washers Set - M2 - M2.5 - M3 - M4 - Steel Black - 10 Sizes - 320 pcs



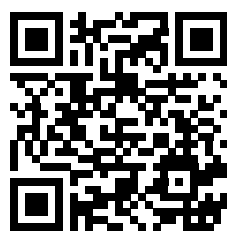
**970 pcs**

**C-38516**  
Universal Sport Car Series - Screws - Nuts Set - 34 Sizes - 970 pcs



**C-38520**  
Shim Ring Set - Steel - 15 Sizes - 375 pcs

More info



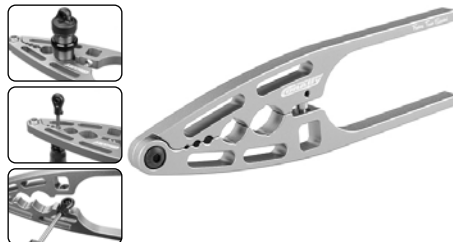
[www.corally.com](http://www.corally.com)

**FACTORY PRO TOOL**



Factory Pro Tool - Hardened Tip - Alu Grip - Hex

**TEAM CORALLY - SHOCK PLIERS**



Team Corally - Shock Pliers

**PINION CADDY M1.0**



Team Corally - Pinion Caddy M1.0 - 9 Pinions - ø5mm

**TEAM CORALLY - GREASE**



Lithium Grease - Blue Grease - Ball Diff Grease - Copper Grease

**TEAM CORALLY - SILICONE OILS**



Shock Oils 60ml - 150ml - CST or WT - 100 >1000 CPS  
Diff Oils 60ml - 2000 >2 000 000 CPS

**TEAM PIT GEAR**



A range of quality equipment for the transport and protection of your equipment.

**TEAM CORALLY - PINIONS**



Discover our range of Precision CNC-Cut MOD-1.0 Pinions for motors with a ø 5.0mm motor shaft

**SPORT RACING - LIPO**



Team Corally - Sport Racing 50C - 4S or 6S - XT-90 - Hard Case

**ELECTRONIC**



A range of high quality electronic equipment for the best performance.



**Discover all these products and more on the website [www.corally.com](http://www.corally.com)**  
*Découvrez tous ces produits et bien plus encore sur le site web [www.corally.com](http://www.corally.com)*  
 Entdecken Sie all diese Produkte und mehr auf der Website [www.corally.com](http://www.corally.com)  
*Ontdek al deze producten en meer op de website [www.corally.com](http://www.corally.com)*

This manual is an edition of Corally, a division of JSP GROUP INTL nv, Geelseweg 80, B-2250 Olen, Belgium. This manual is protected by a copyright and nothing from this edition may be reproduced or used without any prior written authorisation. Whilst every effort has been made to ensure the accuracy of the information in this manual, errors creep in and Corally can accept no responsibility for failures, wrong specifications, accuracy of colours, losses or damages caused. Corally denies any responsibility claims or damages caused by use of our products. Corally is not responsible for product / parts / specifications / Colour changes or availability of these products.

**DECLARATION OF CONFORMITY**  
**EU-Konformitätserklärung/ Déclaration de Conformité UE**

(in accordance with ISO/IEC 17050-1) / (in Übereinstimmung mit ISO/IEC 17050-1) /  
 (Conformément à la norme ISO/IEC 17050-1)

Description : **ASUGA XLR - BUGGY 4WD - 1/8 -RTR**  
 Item Number: **C-00288**

This declaration is issued under the sole responsibility of the manufacturer.  
 Die alleinige Verantwortung für die Ausstellung dieser Erklärung trägt der Hersteller.  
 La présente déclaration est établie sous la seule responsabilité du fabricant.

Product(s)/Produkt(e)/ Produit(s) : **ASUGA XLR - BUGGY 4WD - 1/8 -RTR**

The object of declaration described above is in conformity with the relevant Union harmonization Legislation, specifically the requirements of the specifications listed below, following the provisions of the European RED Directive 2014/53/EU:  
 Der Gegenstand dieser Erklärung ist konform mit den Harmonisierungsrechtsvorschriften der Europäischen Union, insbesondere mit den unten aufgeführten Bestimmungen, und folgt der europäischen RED Direktive 2014/53/EU:  
 L'objet de la déclaration décrit ci-dessus est conforme à la législation pertinente en matière d'harmonisation de l'Union européenne, en particulier les exigences des spécifications énumérées ci-dessous, conformément aux dispositions des directives européennes RED 2014/53/EU:

EN 300 440 V2.1.1:2017	EN 301 489-3 V1.6.1:2013
EN 301 489-1 V2.1.1:2017	EN 60950-1:2006+A11:2009+A1:2010+A12:2011+A2:2013
EN 62479:2010	EN 55024:2010+A1:2015
EN 55032:2015	EN 61000-3-3:2013
EN 61000-3-2:2014	

JSP GROUP INTL • Geelseweg, 80 • 2250 Olen • Belgium

Signed for and on behalf of/ Unterzeichnet für und im Namen von/ Signé pour et au nom de :

Place/Ort/Lieu and Date/Datum/Data : **Olen, Belgium, 15 November 2022**

Name/Nom: **Stefan Engelen**  
 Title/Titel/Titre : **Ceo**

Signature/Unterschrift :




**FEDERAL COMMUNICATIONS COMMISSION**

EQUIPMENT AUTHORIZATION is hereby issued to the named GRANTEE JSP GROUP INTL BVBA / CORALLY, and is VALID ONLY for the equipment identified hereon for use under the Commission's Rules and Regulations listed below.

FCC IDENTIFIER : **2ASFS-C59060**  
 Name of Grantee : **JSP GROUP INTL BVBA / CORALLY**  
 Equipment Class : **Part 15 Low Power Communication Device Transmitter**  
 Notes : **Corally CT2R - C-59060**  
 FCC Rules : **15C**  
 Frequency Range (MHZ) : **2410.0 - 2480.0**

WWW.CORALLY.COM

TEAM  
CORALLY

WORLD CHAMPIONS



WWW.CORALLY.COM

Team Corally is a registered trademark licensed to  
JSP Group Intl bvba • Geelseweg 80 • B-2250 OLEN • Belgium  
Tel: +32 14 25 92 94 • Info@corally.com