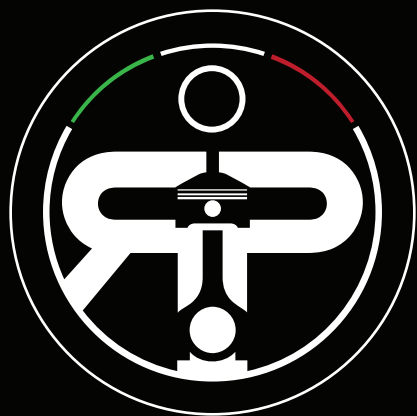


**ITALIANRP**  
RODS AND PISTONS



# RODS INSTALLATION SPECIFICATION SHEET

[www.italianrp.it](http://www.italianrp.it)

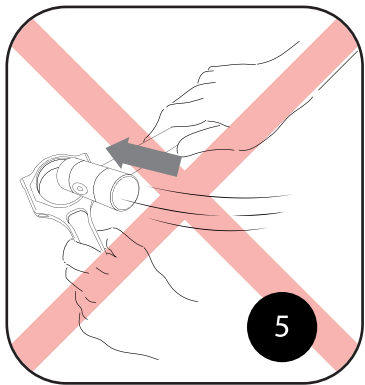
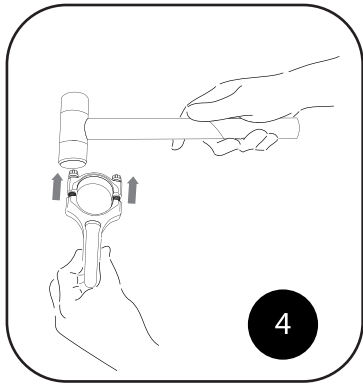
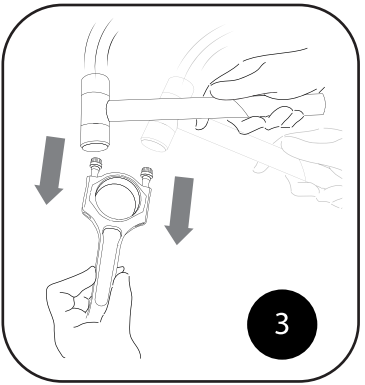
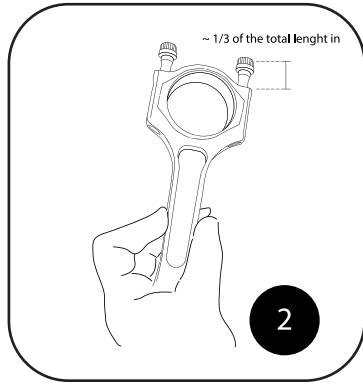
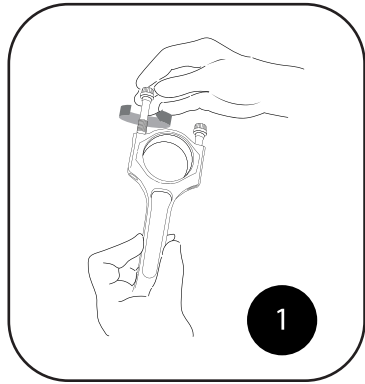


## ***CERTIFICATE OF QUALITY***

At ItalianRP all departments, starting from material, research and development, production to quality control, are housed under the same roof in our factory in Italy. All materials needed in the production for our products are acquired in Italy (or Germany) and 100% certified.

## ***DISCLAIMER/WARRANTY***

Due to the nature of the application, these parts are sold without any express warranty or any implied warranty of merchantability, or fitness for a particular purpose. ItalianRP shall not, under any circumstances, be liable for any special, incidental or consequential damages, including, but not limited to, damage, or loss of property or equipment, loss of profits or revenue, cost of purchased or replacement goods, or claims of customers of the purchase, which may arise and/or result from sale, installation or use of these parts. The sole obligation of ItalianRP shall be limited only to the products to be found defective, in either workmanship or material, after inspection performed by our company. This Limited Warranty applies only to the original purchaser of the product and only covers the replacement or repair of the product at our election.



# FASTENER INSTRUCTIONS

(1/2) Screw the bolts into the threads up to 1/3 of their total length

(3/4) Strike the head of the bolts with a rubber hammer until the upper cap separates from the body  
Upon assembly, tighten the screws with the force indicated in the table below, taking into account the screw model

(5) Do not hit the upper cap inward in an attempt to separate the two parts

## GENERAL FASTENING INSTRUCTION

Under no circumstances assemble the connecting rods without lube on threads and under the head.  
Use only ARP Moly Assembly Lube

- 1) Clear bolts, bolt holes & mating faces with a brush to remove any residue before installing the rods.
- 2) Rods should always be re-sized when new bolts are installed.
- 3) Use ARP Moly Assembly Lube to lubricate the dowel area of the threads and head of the bolt.
- 4) ARP recommends using the "Stretch Method" for torquing bolts, as follow:  
After applying the lubricant and the rods are installed inside the engine, torque the bolts with the pressure listed in the table below, then loosen the bolt and torque them again. Repeat this process a third time.

A log should be kept on the original non-torqued length of each bolt. Bolts that have any permanent deformation or have increased non-torqued length should be replaced.

\*To convert ft-lbs to Nm you must multiply the value for 1,355

MODEL	LENGTH	TORQUE VALUE	STRETCH VALUE
ARP2000 / VIMI 2500	5/16 UNF	37 ft-lbs	.0050" - .0055"
ARP 2000 / VIMI 2500	3/8 UNF	55 ft-lbs	.0055" - .0060"
ARP 2000	7/16 UNF	75 ft-lbs	.0045" - .0050"
ARP L19	3/8 UNF	51 ft-lbs	--
CUSTOM AGE	5/16 UNF	33 ft-lbs	.0055" - .0060"
CUSTOM AGE	3/8 UNF	60 ft-lbs	.0055" - .0060"