

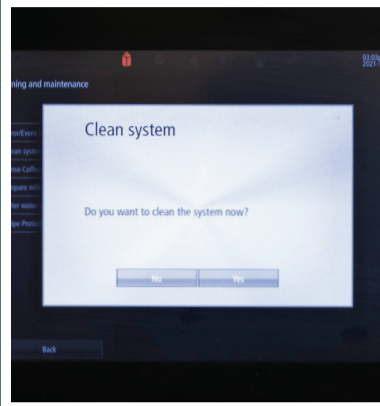
# COFFEE MACHINE DAILY CLEAN CYCLE.



To begin a clean cycle, open the fridge door and remove the milk container



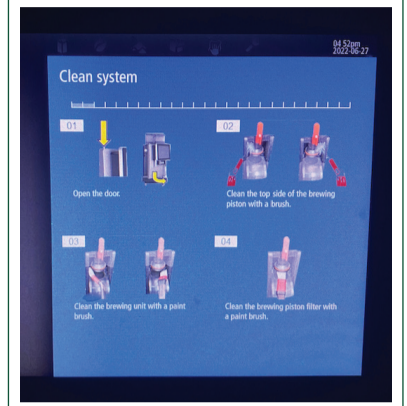
Insert the EMPTY blue cleaning container (with tube connected) and close the fridge door



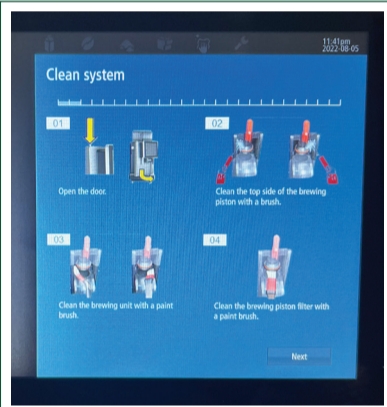
Select YES to begin the daily cleaning process



Open the door by pressing down on the silver button on top. Leave the door open for the next steps



Follow the steps to clean around the brew unit with a brush and remove any coffee grounds



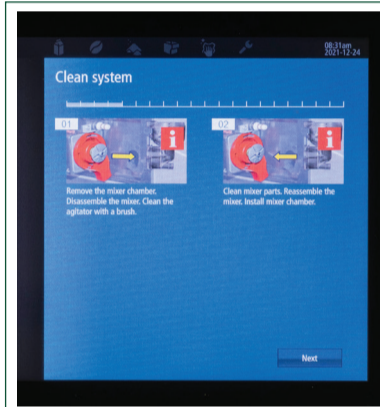
Once complete, select NEXT. Ensure the door is still open in order to proceed



The machine will now prompt you to remove the grounds container and clean the interior



Remove the grounds container and empty into bin. Rinse if required. Select NEXT



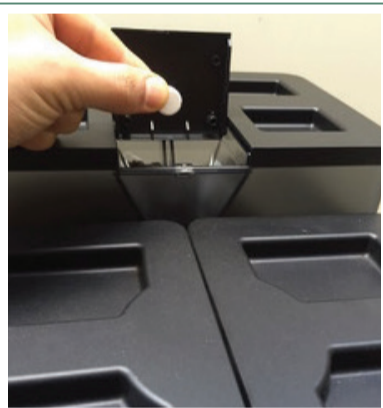
Skip the mixer chamber clean (we do this for you during maintenance) and select NEXT



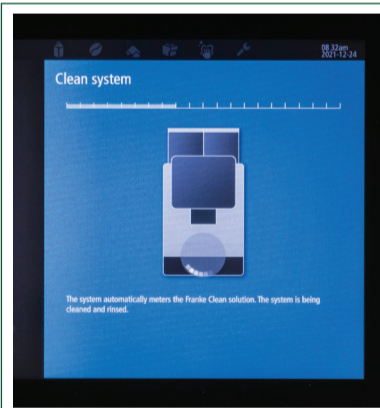
Reinsert the grounds container if you haven't already, and close the door



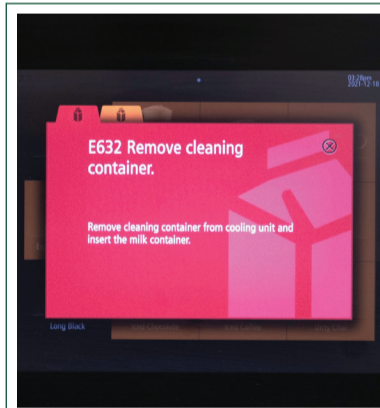
Follow the on-screen instructions to clean the spout, drip grid and drip tray



Drop a Franke cleaning tablet into the chute on top of the coffee machine and select NEXT



The machine will now start an automatic clean cycle (≈ 13 mins), you can leave unattended



The machine is now clean. Remove the blue cleaning container and reinsert the milk container to use



Scan the QR code to watch a live video demonstration

- ✓ **DO** clean the machine **daily** to keep clean & hygienic
- ✓ **DO** regularly clean the milk container (dishwasher ok)
- ✓ **DO** regularly clean the inside of the milk tube
- ✓ **DO** wipe down the machine exterior as needed
- ✓ **DO** remove the screw-top lid on the cleaning solution

- × **DON'T** remove vacuum seal on the cleaning solution
- × **DON'T** fill the blue cleaning container with water
- × **DON'T** remove the brewing unit unless advised to
- × **DON'T** overfill the chocolate and chai hoppers
- × **DON'T** let loose coffee beans fall into the choc/chai