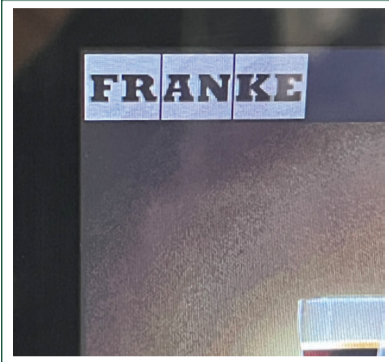


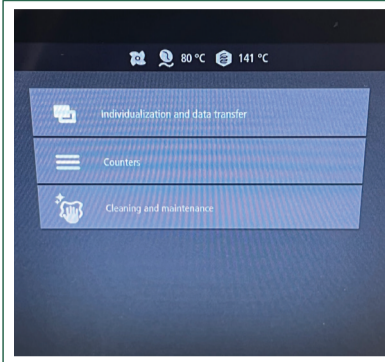
COFFEE MACHINE DAILY CLEAN CYCLE



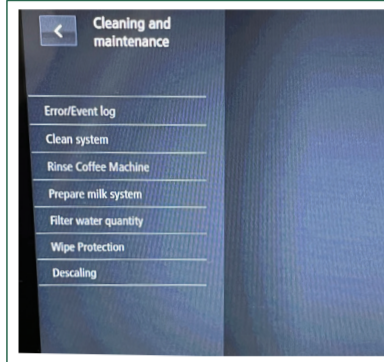
To start a clean cycle, press the Franke logo in the top left corner



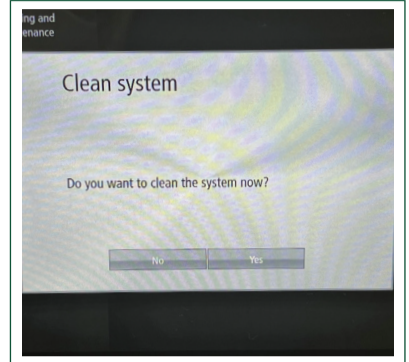
Enter the pin code 7777 and select OK



Select Cleaning and Maintenance



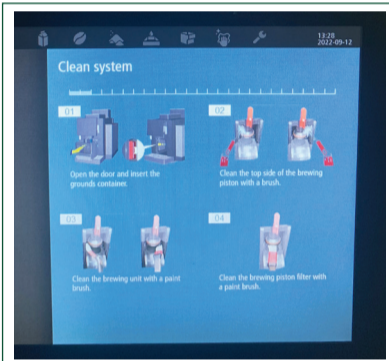
Select Clean System



Select YES



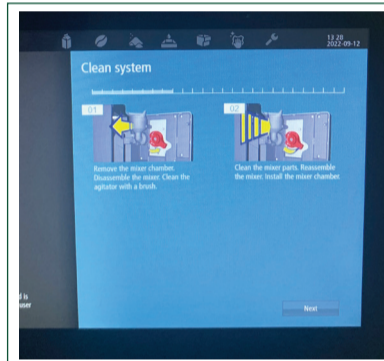
Open the door by removing the grounds container and pressing the red lever on the inside left of the door



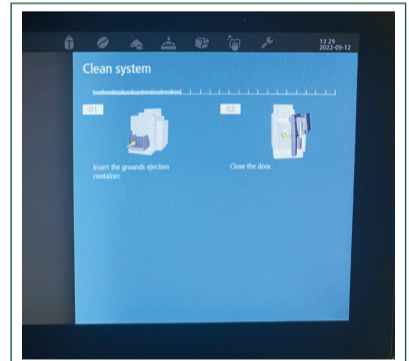
The machine will now prompt you to clean the brew unit. Follow the steps and select NEXT



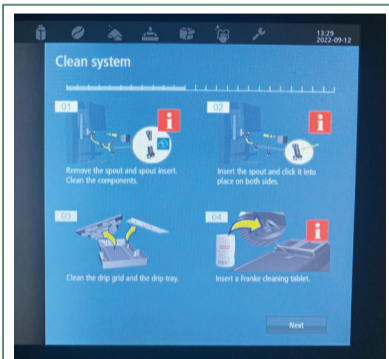
Remove the grounds container and empty into bin. Rinse if required. Brush out any loose grounds. Select NEXT



Skip the mixer chamber clean (we do this for you during maintenance) and select NEXT



Reinsert the grounds container and close the door



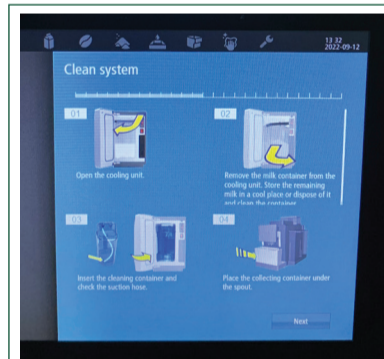
Follow the on-screen instructions to clean the spout, drip grid and drip tray



To remove the spout & spout insert, gently pull down. Rinse, reattach, then reinsert into place



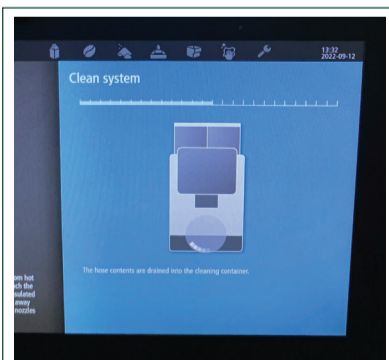
Drop a Franke cleaning tablet into the chute on top of the coffee machine and select NEXT



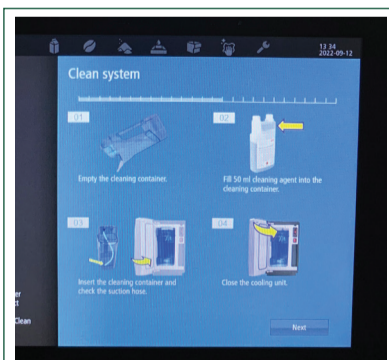
Remove the milk container and store in your kitchen fridge. Step 04 only applies to tanked machines



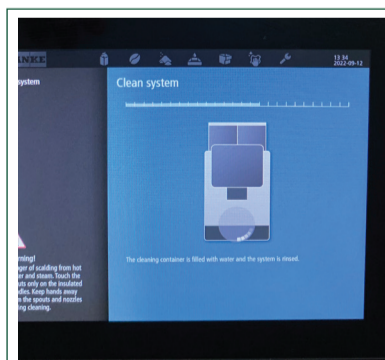
Insert the blue jug and close the door. Select NEXT



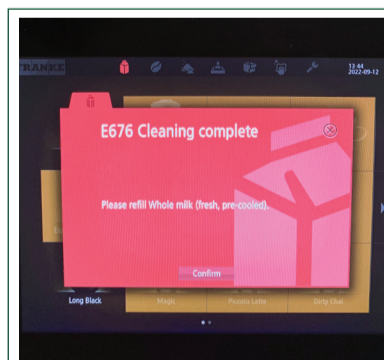
The machine will now run through a short 1 minute rinse cycle



Once complete, empty the blue jug, fill with 50ml of cleaning solution and reinsert. Close door and select NEXT



The machine will now start an automatic clean cycle (≈ 9 mins), you can leave unattended



The machine is now clean. Remove the blue jug, reinsert the milk container and select CONFIRM to start using



Scan the QR code to watch a live video demonstration