

MARQUIS Chifley

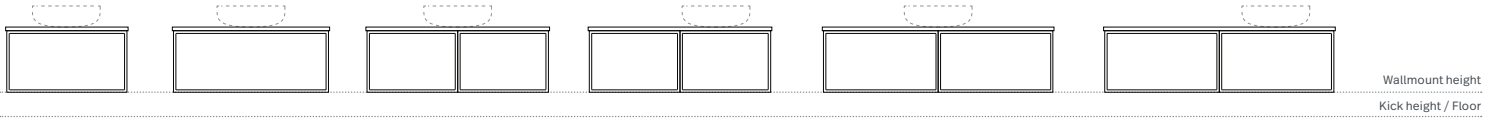
Customer name _____

PO# _____

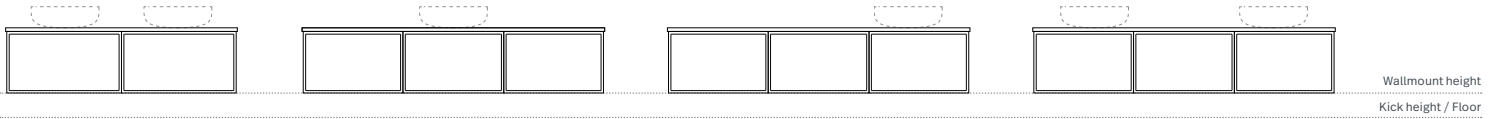
Salesperson _____

Store _____

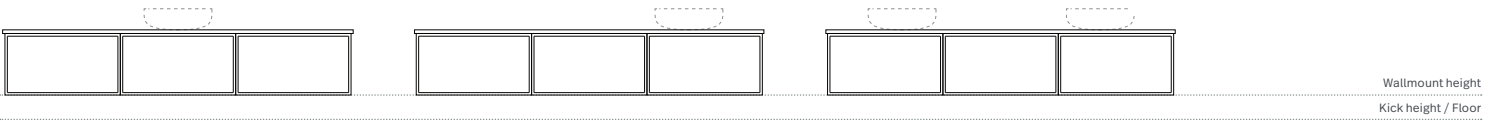
1 Configurations Standard features: soft close drawers



- Chifley 1**
600mm
centre basin
- Chifley 2**
750mm
centre basin
- Chifley 3**
900mm
centre basin
- Chifley 4**
900mm
off centre basin
- Chifley 5**
1200mm
centre basin
- Chifley 6**
1200mm
off centre basin



- Chifley 7**
1200mm
double basin
- Chifley 8**
1500mm
centre basin
- Chifley 9**
1800mm
off centre basin
- Chifley 10**
1500mm
double basin



- Chifley 11**
1800mm
centre basin
- Chifley 12**
1800mm
off centre basin
- Chifley 13**
1800mm
double basin

*Chifley 6, 9 and 12: Right hand basin Left hand basin

2 Base options

- Wallmount only

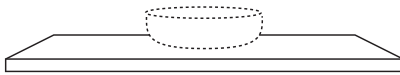
3 Cabinet finishes Vertical grain only

- Prime Oak
- Florentine Walnut
- Coastal Oak
- Bottega Oak
- Estella Oak
- Blossom Matte White

4 Handles (top pull handles only. For full range of handles, see marquis.com.au/handles-legs)

- Handle name: _____
- No Handle Do not drill. Attach your own.

5 Top



Above Counter Basin only

- 1 tap hole 3 tap holes No tap holes
- 12 o'clock 10 o'clock 2 o'clock

Select basins from Marquis Bathroom Book. Note: Taphole options will vary. Refer Marquis office

Top finish

- Symphony colour _____
- Caesarstone colour _____
- Dekton colour _____

Marquis above counter basin range

- Basin name _____

Additional info _____

Customer signature _____

Date _____