



STEG

CROWN

For Mercedes-Benz 190e

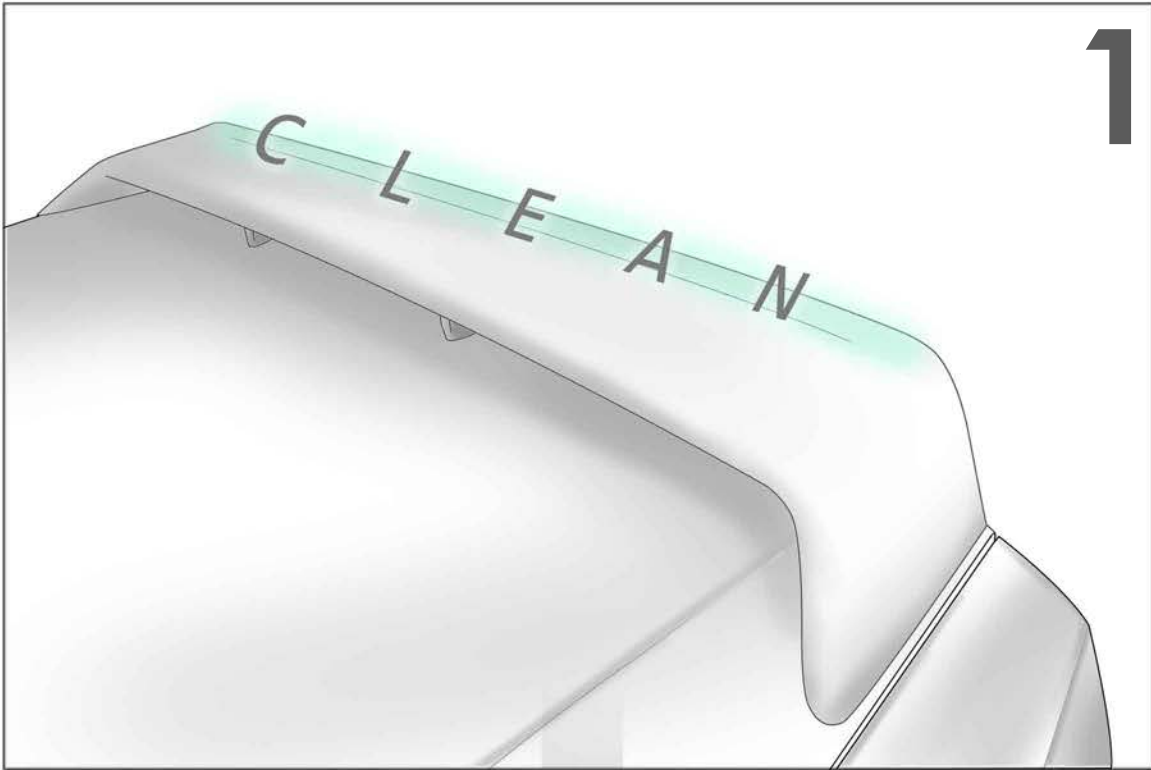


Disclaimer

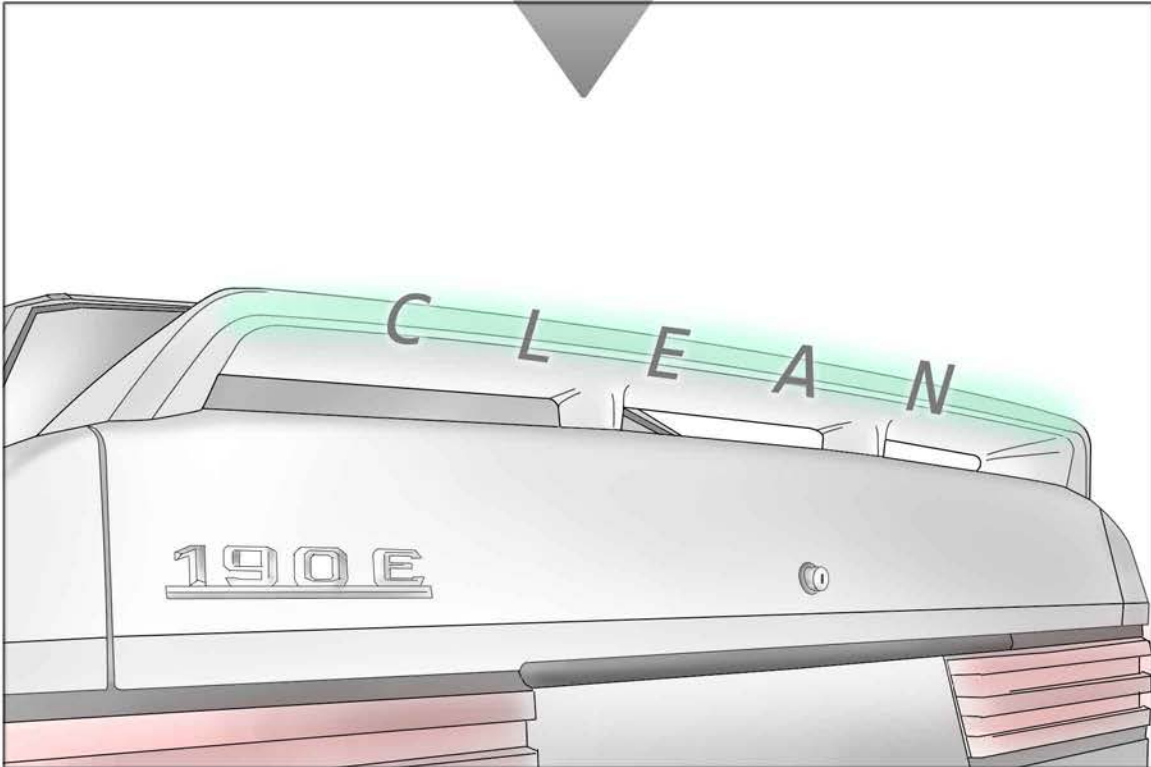
This installation manual is intended as a reference for attachment of the STEVS Crown. While there are many different ways to attach the Crown, this method has been tested for strength and durability for daily driving and occasional track day use.

Due to the age of these vehicles some applications may need slight trimming and adjustment for a perfect fit. The Crowns are pre-fitted to a factory spoiler.

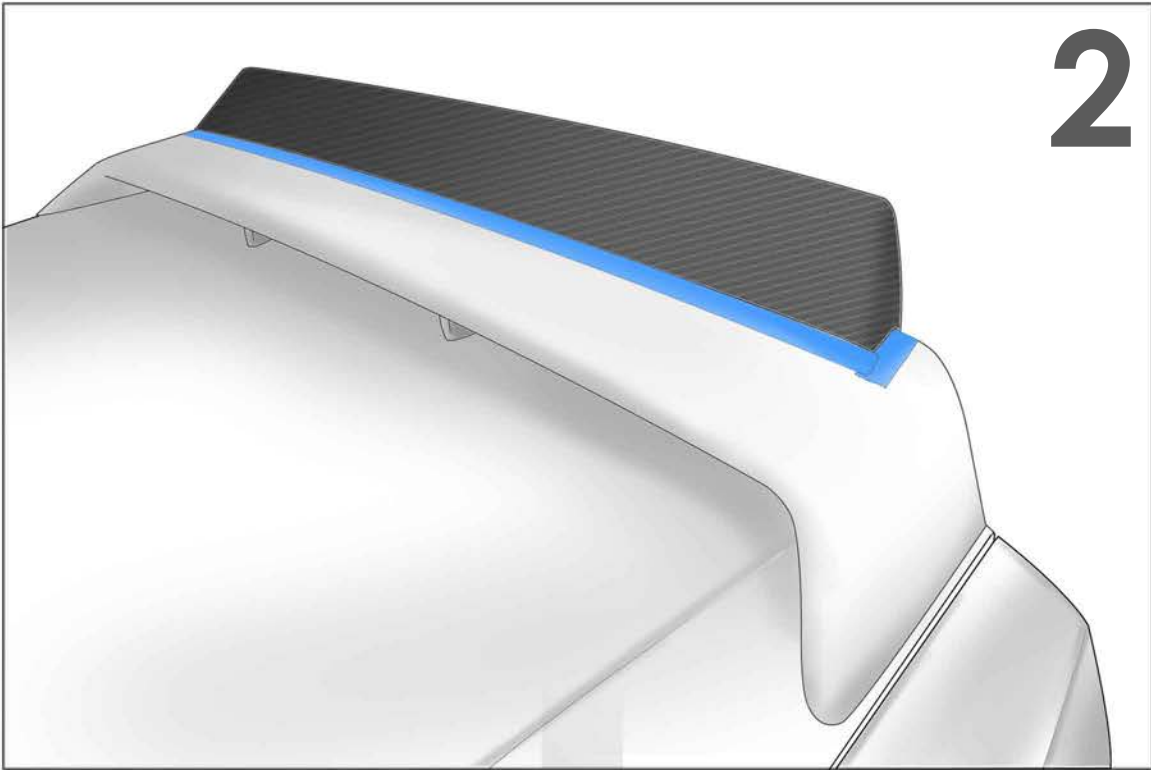
STEVS is not responsible for any damage caused by improper installations.



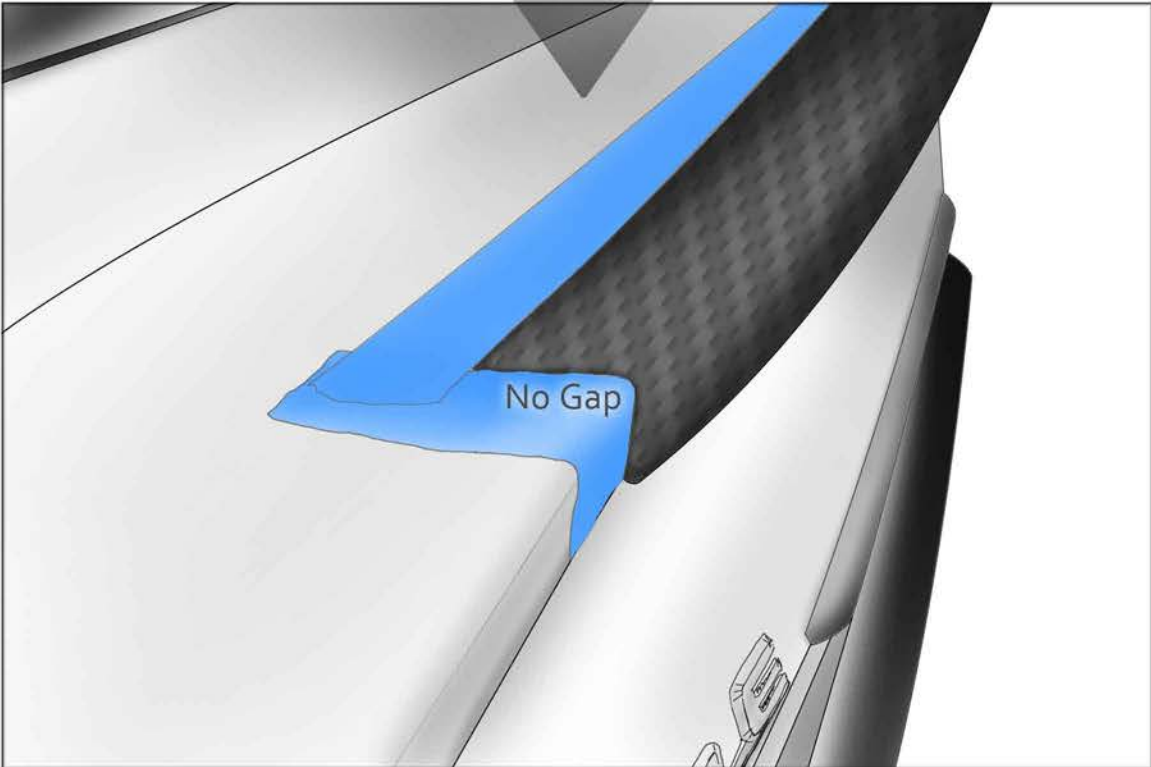
Thoroughly clean the area, that is shown in green, of the spoiler where the Crown will be mounted over. Use a wax and grease remover to sufficiently prepare the surface.



Ensure that you clean the back edge of the spoiler and underneath as well. Once wiped clean, let dry.

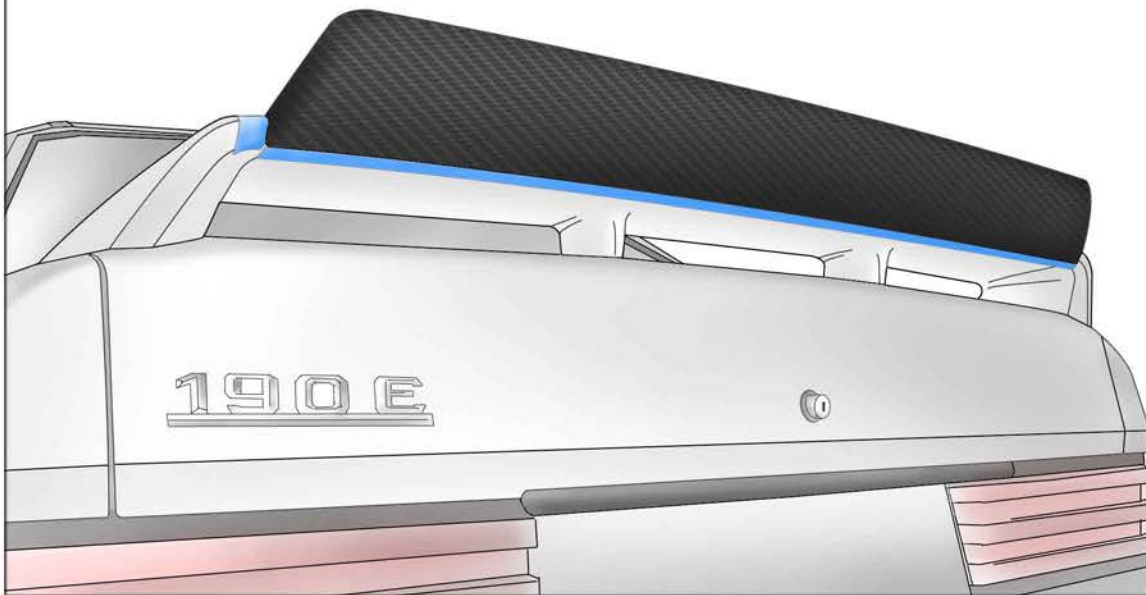


Place the Crown onto the spoiler ensuring that it is centered and at the correct angle for mounting. Stick painters tape on the spoiler up to the front edge of the Crown. (Use tape to temporarily hold the Crown in place if you are installing alone)



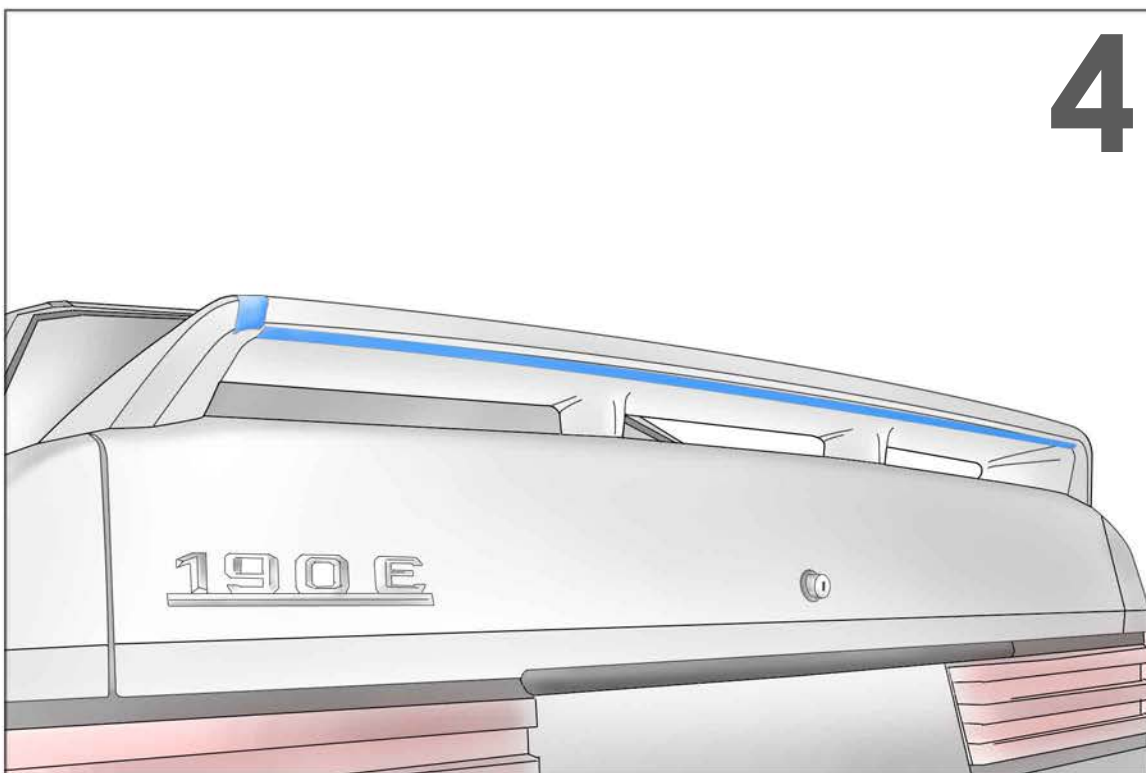
Adjust the angle until there is no gap on the sides where the Crown meets the spoiler.

3



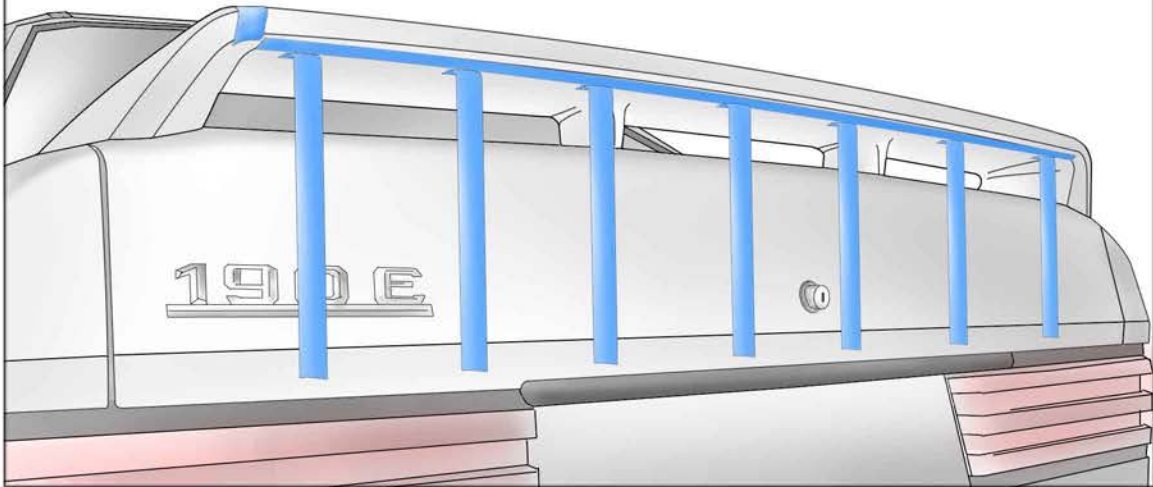
Place tape surrounding the entire Crown. This will prevent any excess urethane from contacting the paint.

4



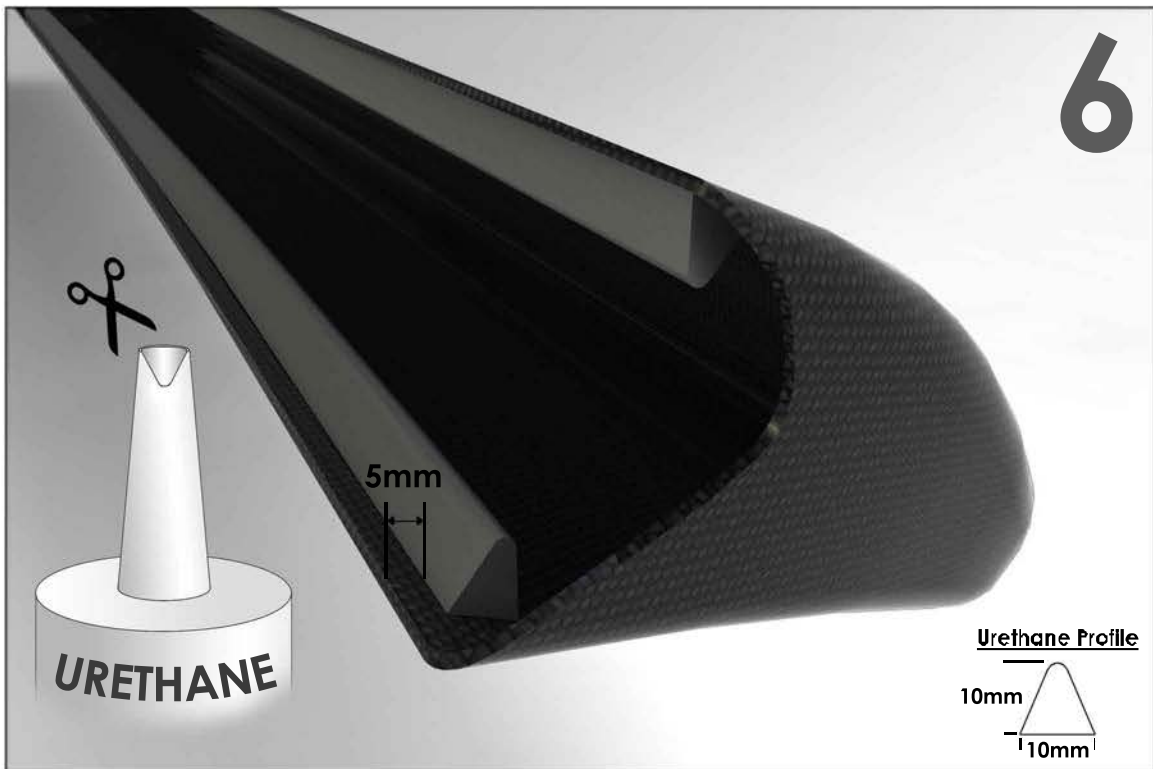
Place the Crown aside for now.

5



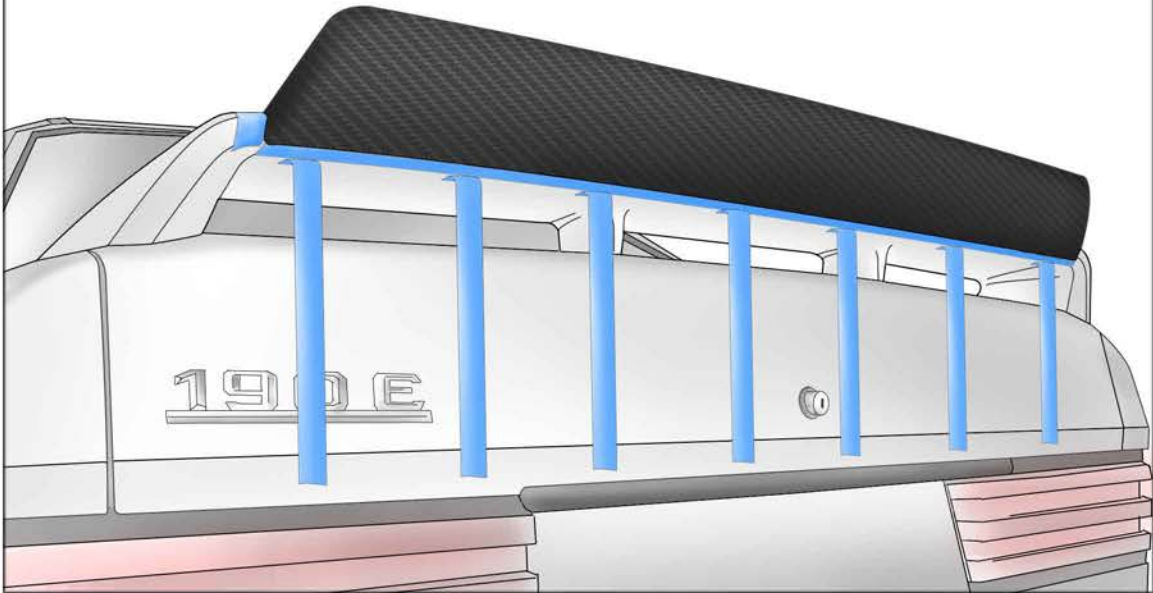
Measure out strips of tape approximately 18 inches in length. Stick them on the underside of the spoiler with the sticky side facing out. Place them around 5 inches apart.

6



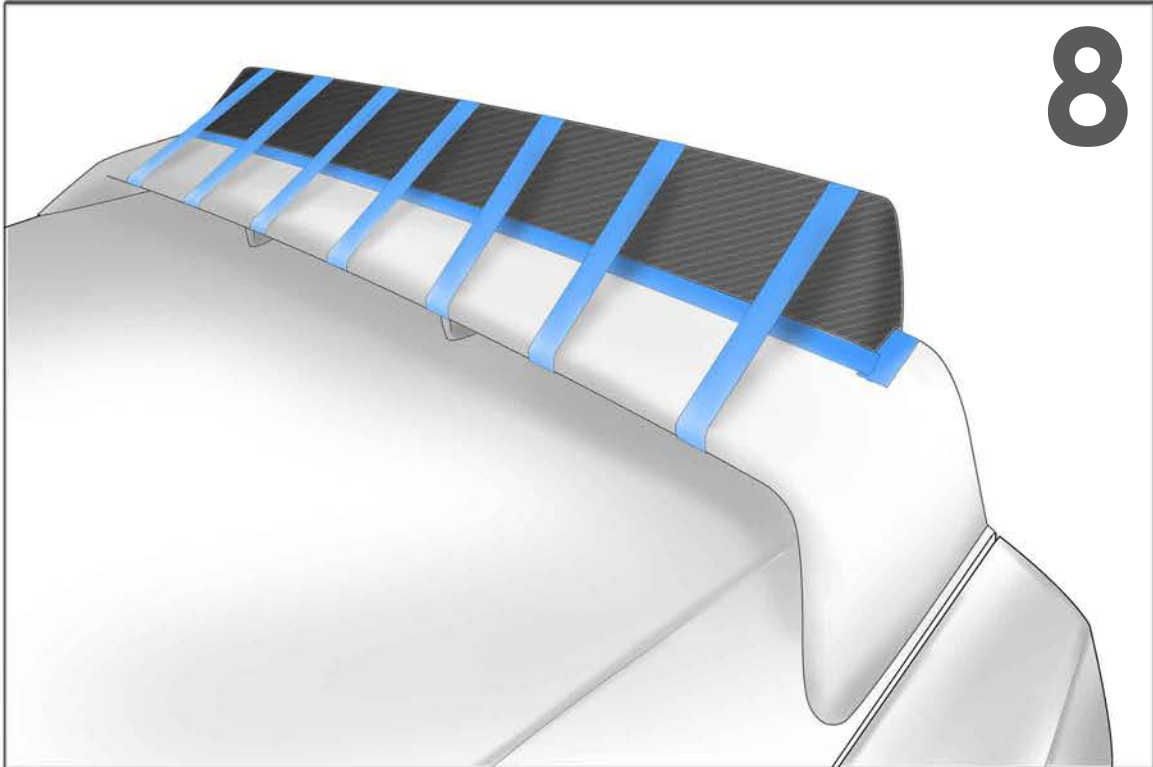
Lay a bead of windshield urethane, or similar, on each side of the inside of the Crown. Leave a 5 mm gap from the edge to the bead. The profile of the bead should be about 10mm X 10mm. Cut the urethane tube nozzle in a 'V' shape to get a pointed profile.

7

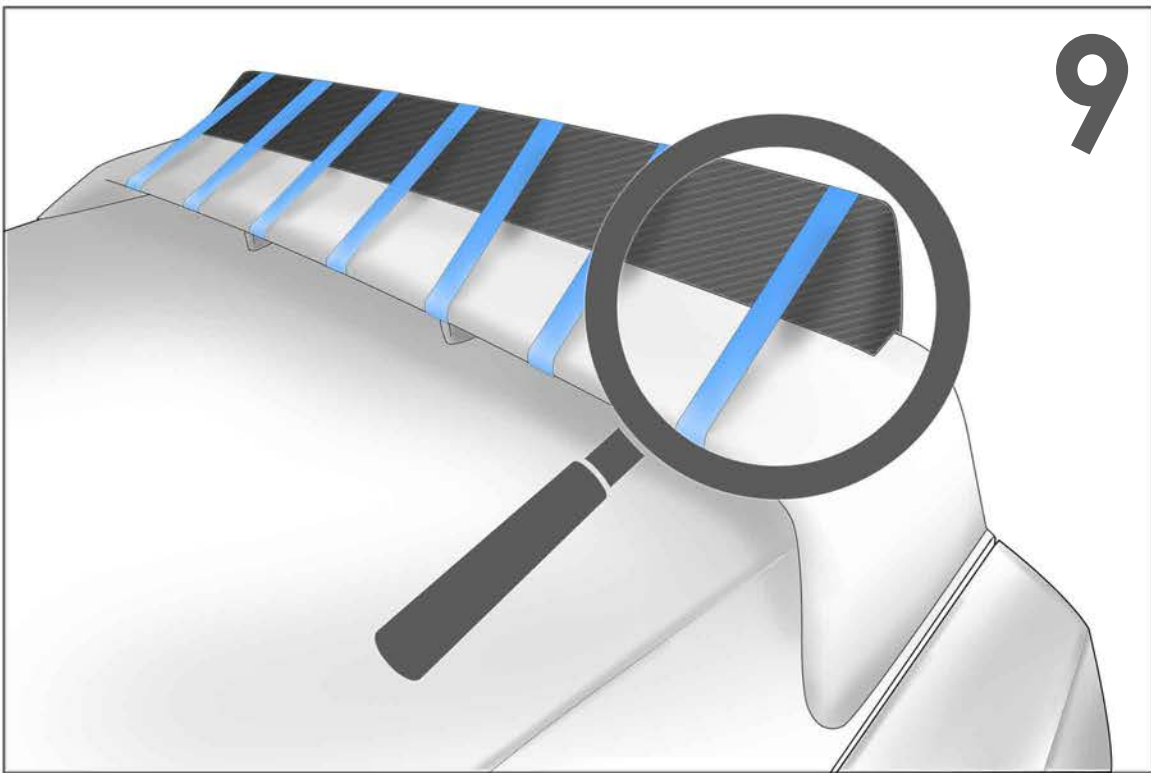


Carefully place the Crown onto the spoiler within the tape boundaries. Ensure that the angle is correct and that there is no gap on the sides.

8



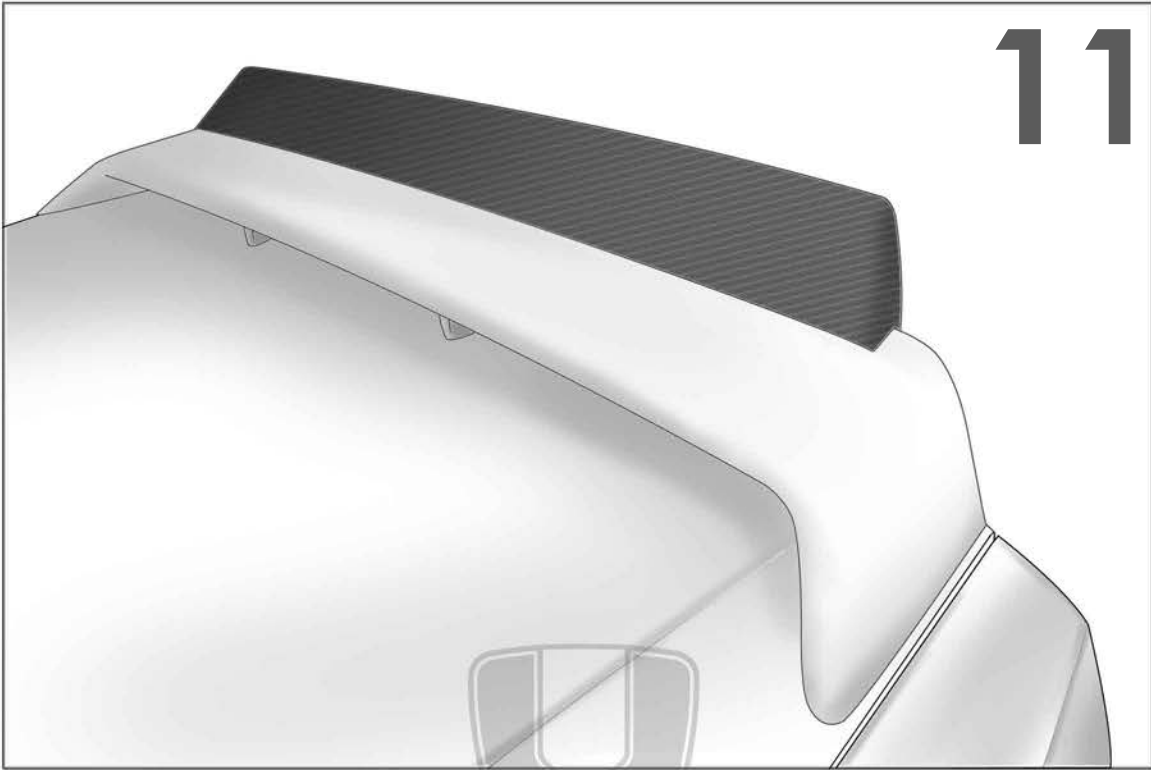
Wrap the tape firmly around the Crown and over the front edge of the spoiler.



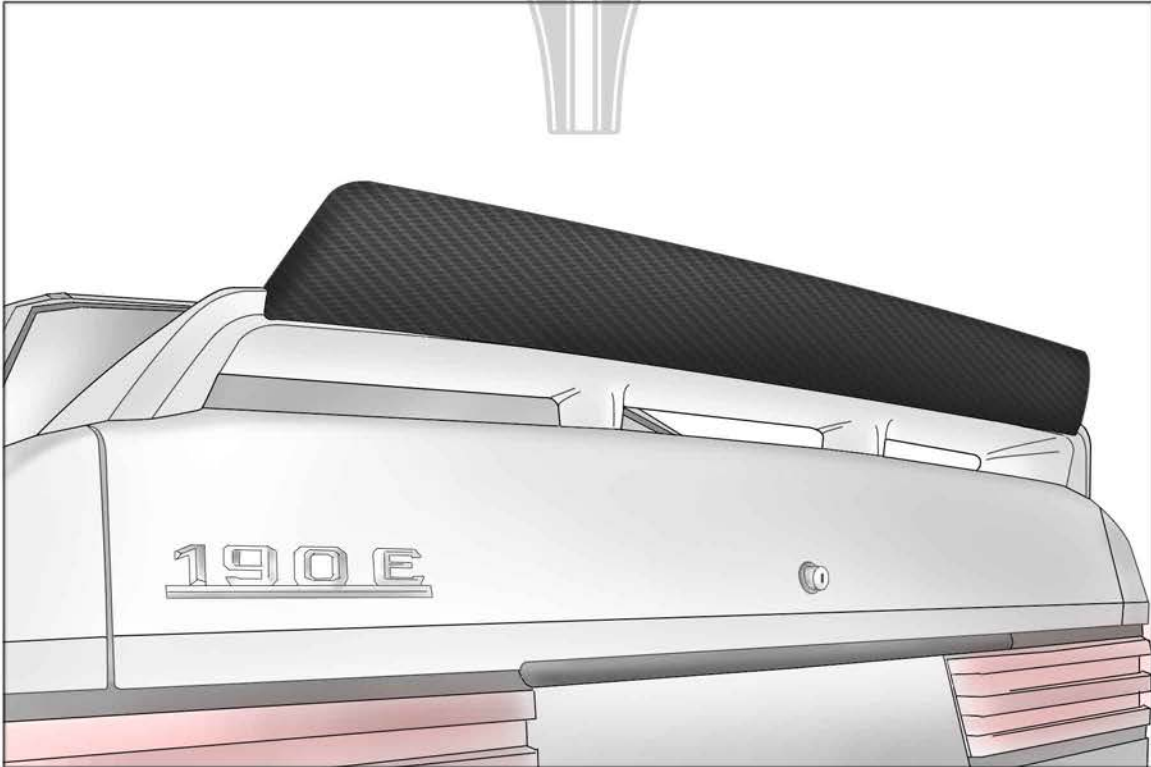
Remove the front and side pieces of tape. Inspect the Crown to ensure that it is well placed. If needed, secure with extra pieces of tape. Wipe off the excess urethane from the bottom piece of tape. (This tape will be removed later).



Allow the urethane to cure based on the specifications of the product you are using.



Once the urethane is cured, remove all of the tape holding the Crown in place as well as the tape at the bottom. Ensure that the Crown is well secured.



Ready for action!