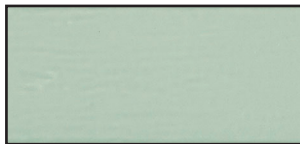


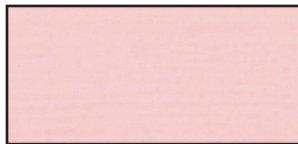
## Boqueria

Inspired by classic English brick that has weathered and painted over time. Boqueria is a unique product with a textured finish in 38 colors.

1. 38 Colors
2. Matte finish only
3. 3" x 9"



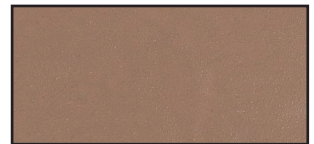
**500-401**



**500-402**



**500-403**



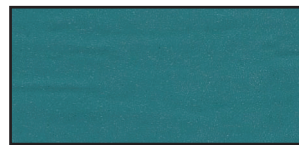
**500-404**



**500-405**



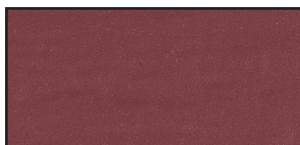
**500-406**



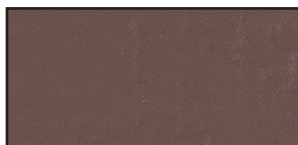
**500-407**



**500-408**



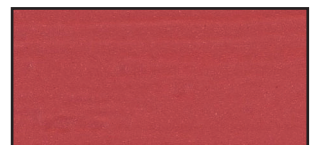
**500-409**



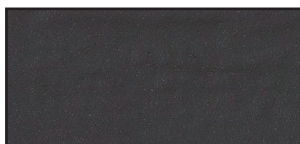
**500-410**



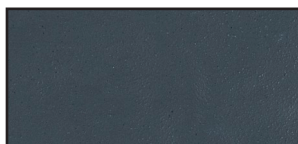
**500-411**



**500-412**



**500-413**



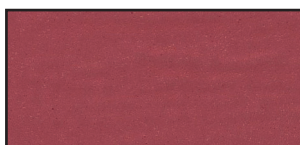
**500-414**



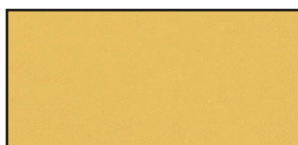
**500-415**



**500-416**



**500-417**



**500-418**



**500-419**



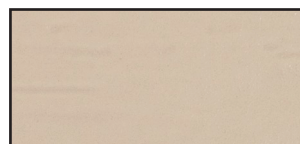
**500-420**



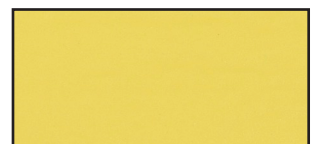
**500-421**



**500-422**



**500-423**



**500-424**

USA

MADE/STOCK





500-425



500-426



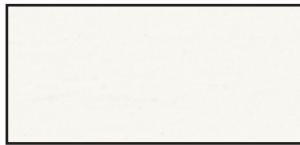
500-427



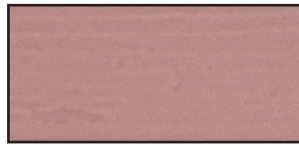
500-428



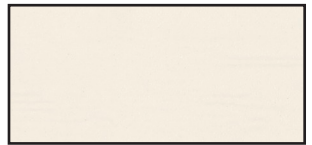
500-429



500-430



500-431



500-432



500-433



500-434



500-435



500-436

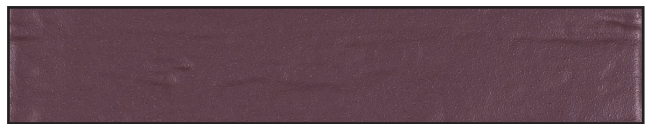
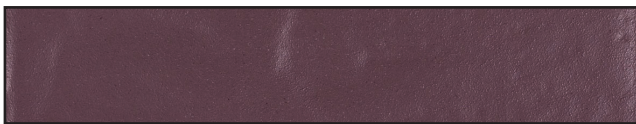
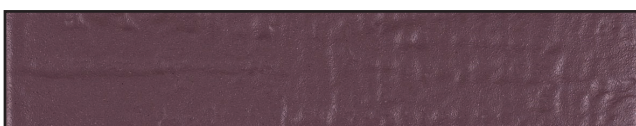


500-437



500-438

*Mixture of Texture*



**Sizes**



3x9



## Floor and Wall Solutions

Order Samples at  
331-702-2178

www.mondanicollection.com

### 1. FINISHES:

**Matte**

**Type: Ceramic Wall Tile**

**Application: Indoor**

**Thickness: 7.2 mm**

### 2. TECHNICAL DATA

Physical Properties	ASTM Test	ISO Test	Industry Standards	Mondani Results
Water Absorption	C373	ISO-10545/3	7.0% < wa ≤ 20%	> 10%
Breaking Strength	C648	ISO-10545/4	> 250 lbf	> 400 lbf
Scratch Hardness	MOH's Scale	EN-101	-	3
Chemical Resistance	C650	ISO-10545/13	Unaffected	Unaffected
Shade and Texture	CTDA "V"	-	-	V1
Warpage	C485	ISO-10545/2	0.0075	Pass
Wedging	C502	ISO-10545/2	1.0% Max	Pass

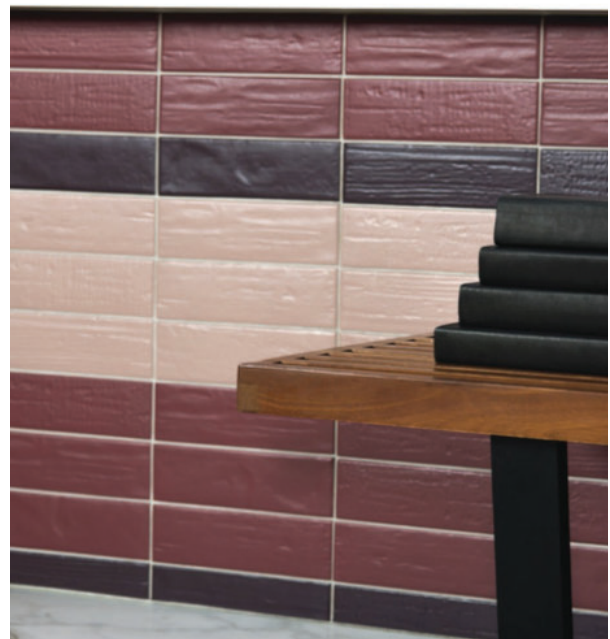
### 3. INSTALLATION

All installation work using Mondani Collection tiles will conform to the standards set forth in the latest version of ANSI A108/118 and/or the TCNA Handbook for Ceramic Tile installations.

Installation or setting materials:

Movement joints shall be provided throughout the tile and work will conform to ANSI Specification A108.01-3.7; A108.02 – 4.4. and TCNA Details EJ171.

Setting materials used will conform to the ANSI 118.4 standard or greater and be recommended by the selected manufacturer for the installation & setting materials for ceramic or porcelain tile based on the application requirements.



USA  
MADE/STOCK



# MONDANI

COLLECTION

## Floor and Wall Solutions

Order Samples at  
331-702-2178  
[www.mondanicollection.com](http://www.mondanicollection.com)



USA  
MADE/STOCK

