

Terrazzo Effect

An attractive blend of concrete and stone with gentle movement of fine grains speaks to the modern elegance of Terrazzo.

1. 4 Colors
2. 4 Sizes
3. Matte finish
4. Mosaics and trim available
5. Rectified



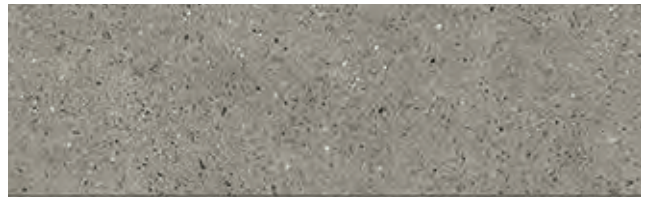
400-301



400-302



400-303

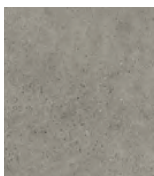


400-304

Sizes, Mosaics and Trims



24x48



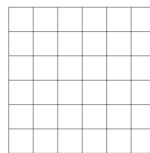
24x24



12x24



6x24



2x2 mosaic
Sheet Size: 12x12



Bullnose
3x24



Cove Base
6x12





Floor and Wall Solutions

Order Samples at
331-702-2178

www.mondanicollection.com

1. FINISHES:

Matte

Thickness: 9mm

Recommended Grout Joint: 3/32" or greater

All sizes modular with 3/16" grout joint

Grout joints of 1/8" inch or less, may require floor flatness values in excess of the 1/4" in 10' (or 1/16" in 1.0') standard required by ANSI.

2. TECHNICAL DATA

Physical Properties	ASTM Test	Industry Standards	Mondani Results
Water Absorption	C373	Impervious <0.5%	≤ 0.1%
Bond Strength	C482	≥ 50 psi	≥ 200 psi
Breaking Strength	C648	≥ 250 lbf	≥ 400 lbf
Hardness (Mohs)	(No regulated)	Range 0 - 10	≥ 7
Frost Resistance		No sample must show alterations to surface	Resistant
(Freeze/Thaw)	C1026	No Requirement	
Chemical Resistance	C650	Range E - A	Unaffected
Coefficient of Friction (Dynamic)	DCOF Acutest sn (wet)	≥ 0.42*	≥ 0.42
Aesthetic Classification	Visual Evaluation Shade & Texture	No Requirement	V2

* All values given are for matte and semi-polished. No values are given for polished material. Mondani Collection does not recommend polished surfaces in area subject to exposure from grease, oil or water.

For level interior spaces to be walked upon when wet (see ANSI A137.1 section 6.2.2.1.10 – Section 9.6 for test procedure).

3. INSTALLATION

All installation work using Mondani Collection tiles will conform to the standards set forth in the latest version of ANSI A108/118 and/or the TCNA Handbook for Ceramic Tile installations.

Installation or setting materials:

Movement joints shall be provided throughout the tile and work will conform to ANSI Specification A108.01-3.7; A108.02 – 4.4. and TCNA Details EJ171.

Setting materials used will conform to the ANSI 118.4 standard or greater and be recommended by the selected manufacturer for the installation & setting materials for ceramic or porcelain tile based on the application requirements.

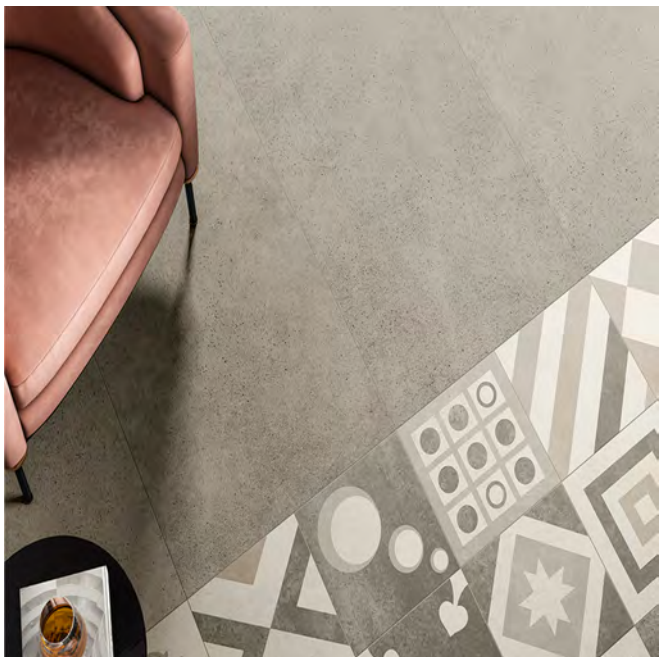


MONDANI

COLLECTION

Floor and Wall Solutions

Order Samples at
331-702-2178
www.mondanicollection.com



USA
MADE/STOCK

