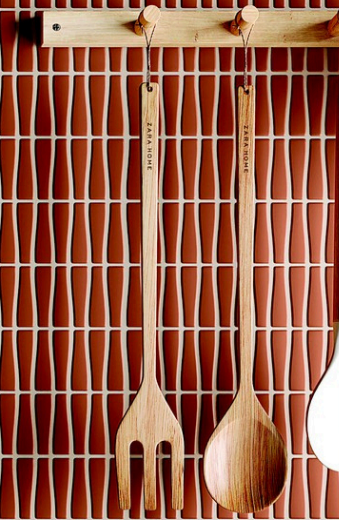
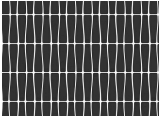


# Move

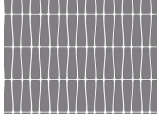




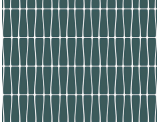
**SOBRO 12x12**



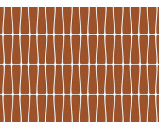
500-1403MOSS-12X12  
MOS SOBRO BLACK



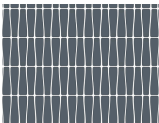
500-1402MOSS-12X12  
MOS SOBRO ASH



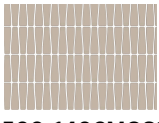
500-1404MOSS-12X12  
MOS SOBRO CYAN



500-1401MOSS-12X12  
MOS SOBRO AMBER



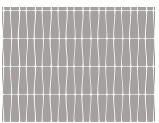
500-1405MOSS-12X12  
MOS SOBRO INDIGO



500-1406MOSS-12X12  
MOS SOBRO SAND

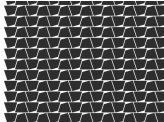


500-1408MOSS-12X12  
MOS SOBRO WHITE

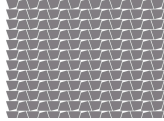


500-1407MOSS-12X12  
MOS SOBRO SILVER

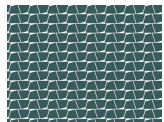
**BROADWAY 12x12**



500-1403MOSBR-12X12  
MOS BROADWAY BLACK



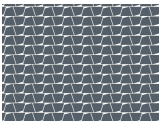
500-1402MOSBR-12X12  
MOS BROADWAY ASH



500-1404MOSBR-12X12  
MOS BROADWAY CYAN



500-1401MOSBR-12X12  
MOS BROADWAY AMBER



500-1405MOSBR-12X12  
MOS BROADWAY INDIGO



500-1406MOSBR-12X12  
MOS BROADWAY SAND



500-1408MOSBR-12X12  
MOS BROADWAY WHITE



500-1407MOSBR-12X12  
MOS BROADWAY SILVER

**BRENTWOOD 11x12**



500-1403MOSB-11X12  
MOS BRENTWOOD BLACK



500-1402MOSB-11X12  
MOS BRENTWOOD ASH



500-1404MOSB-11X12  
MOS BRENTWOOD CYAN



500-1401MOSB-11X12  
MOS BRENTWOOD AMBER



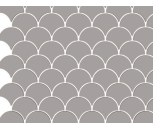
500-1405MOSB-11X12  
MOS BRENTWOOD INDIGO



500-1406MOSB-11X12  
MOS BRENTWOOD SAND



500-1408MOSB-11X12  
MOS BRENTWOOD WHITE



500-1407MOSB-11X12  
MOS BRENTWOOD SILVER

**MIDTOWN 11x11**



500-1403MOSM-11X11  
MOS MIDTOWN BLACK



500-1402MOSM-11X11  
MOS MIDTOWN ASH



500-1404MOSM-11X11  
MOS MIDTOWN CYAN



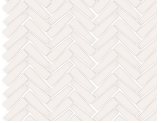
500-1401MOSM-11X11  
MOS MIDTOWN AMBER



500-1405MOSM-11X11  
MOS MIDTOWN INDIGO



500-1406MOSM-11X11  
MOS MIDTOWN SAND



500-1408MOSM-11X11  
MOS MIDTOWN WHITE



500-1407MOSM-11X11  
MOS MIDTOWN SILVER

**TECHNICAL DATA**



Finish MATTE	Freeze Resist Resistant	Shade Variant V1	Color Body N/A	Absorb Resist ≤ 0.5%	Stain Resist Class A	DCOF AccTest N/A	Chew Resist Class A	Break Strength ≥ 250lbf	Hardness 4	Grout Joint N/A
-----------------	----------------------------	---------------------	-------------------	-------------------------	-------------------------	---------------------	------------------------	----------------------------	---------------	--------------------

PACKING INFO

Product Size Inches	Actual Size	THICKNESS MM	LBS/ CARTON	PCS/ CARTON	SF/ CARTON	SF/ PALLET	LBS/ PALLET	CARTON/ PALLET
8 x 48	7.81 x 47.19	9mm	54.02	5	12.8	576.2	2430.8	45
12 x 48	11.75 x 47.18	9mm	18.74	1	3.87	69.66	337.31	18

**FORMATS**

AREAS OF USAGE	
Interior Dry	Suitable
Interior Wet	Suitable



**12 X 48**

**8 X 48**