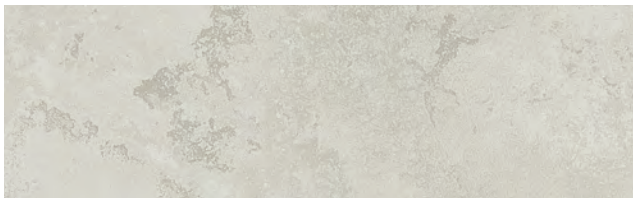


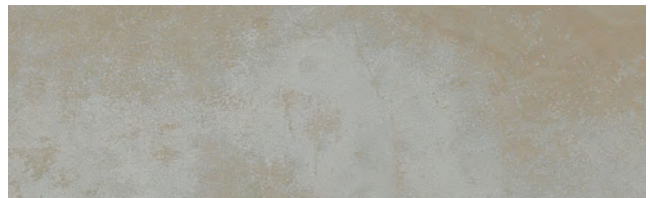
## Forge

Beautiful metal effect tile that can be installed on both walls and floors. Forge provides a contemporary metallic look that would look great for both walls and floors in your next project

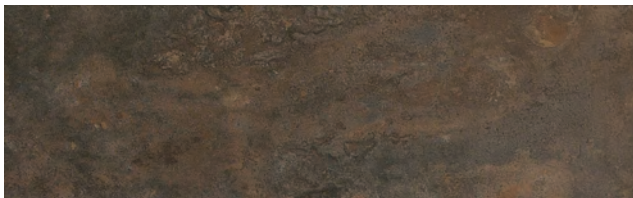
1. 4 Colors, 3 Sizes 48x24,24x24,12x24
2. 24x24 not available in colors 400-402M and 400-403M
3. 24x48 available in colors 400-401M and 400-404M
4. Matte Finish
5. Mosaic and trim available
6. Rectified



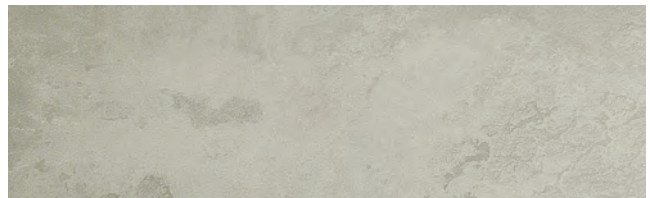
**400-401**



**400-402**



**400-403**

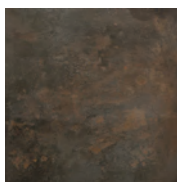


**400-404**

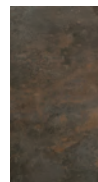
### Sizes, Mosaics and Trims



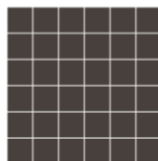
**48x24**



**24x24**



**12x24**



**2x2 mosaic**  
Sheet Size: 12x12



**Bullnose**  
3x24



**Cove Base**  
6x12



## Floor and Wall Solutions

Order Samples at  
331-702-2178  
www.mondanicollection.com

### 1. FINISHES:

Matte

**Thickness: 9 mm**

**Recommended Grout Joint: 3/32" or greater**

**All sizes modular with 3/16" grout joint**

**Grout joints of 1/8" inch or less, may require floor flatness values in excess of the 1/4" in 10' (or 1/16" in 1.0') standard required by ANSI.**

### 2. TECHNICAL DATA

Physical Properties	ASTM Test	Industry Standards	Mondani Results
Water Absorption	C373	Impervious <0.5%	Pass
Bond Strength	C482	≥ 50 psi	≥ 200 psi
Breaking Strength	C648	≥ 250 lbf	≥ 400 lbf
Hardness (Mohs)	(No regulated)	Range 0 - 10	≥ 6
Frost Resistance	Scratch Test	No sample must show alterations to surface	Pass
(Freeze/Thaw)	C1026	No Requirement	Pass
Chemical Resistance	C650	Range E - A	Unaffected
Coefficient of Friction (Dynamic)	DCOF Acutest m (wet)	≥ 0.42*	> 0.42
Aesthetic Classification	Visual Evaluation Shade & Texture	No Requirement	V2

\* All values given are for matte and semi-polished. No values are given for polished material. Mondani Collection does not recommend polished surfaces in area subject to exposure from grease, oil or water.

For level interior spaces to be walked upon when wet (see ANSI A137.1 section 6.2.2.1.10 – Section 9.6 for test procedure).

### 3. INSTALLATION

All installation work using Mondani Collection tiles will conform to the standards set forth in the latest version of ANSI A108/118 and/or the TCNA Handbook for Ceramic Tile installations.

Installation or setting materials:

Movement joints shall be provided throughout the tile and work will conform to ANSI Specification A108.01-3.7; A108.02 – 4.4. and TCNA Details EJ171.

Setting materials used will conform to the ANSI 118.4 standard or greater and be recommended by the selected manufacturer for the installation & setting materials for ceramic or porcelain tile based on the application requirements.

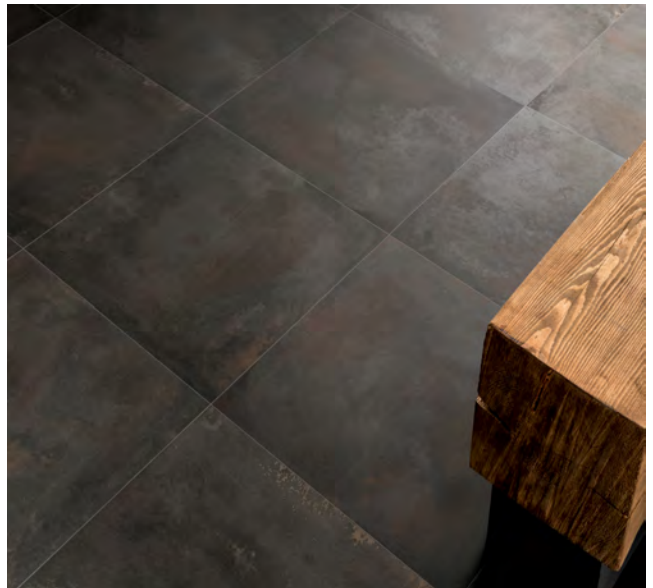
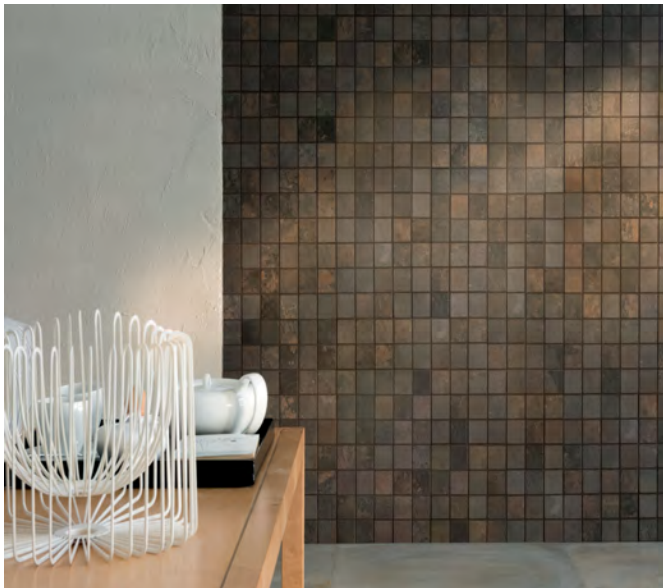


# MONDANI

COLLECTION

## Floor and Wall Solutions

Order Samples at  
331-702-2178  
[www.mondanicollection.com](http://www.mondanicollection.com)



USA  
MADE/STOCK

