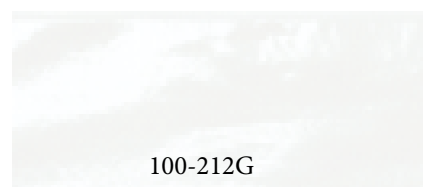
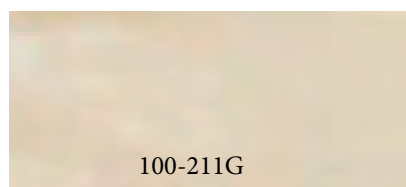
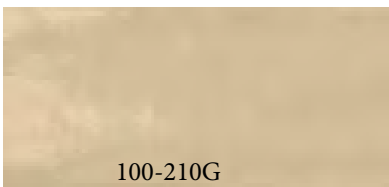
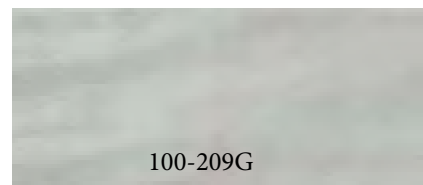
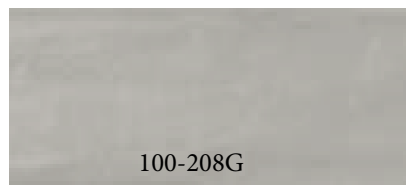
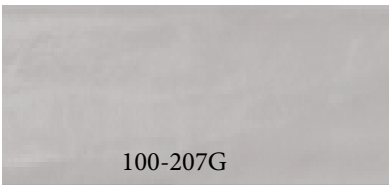
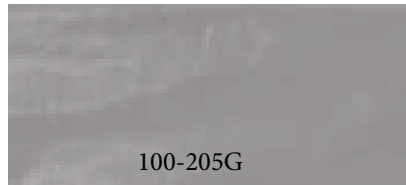
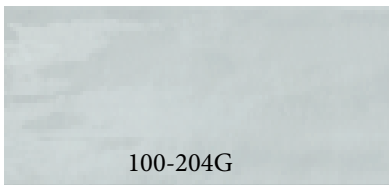
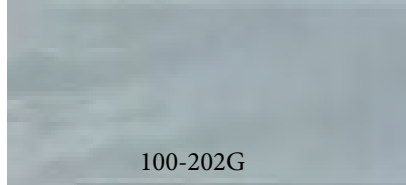
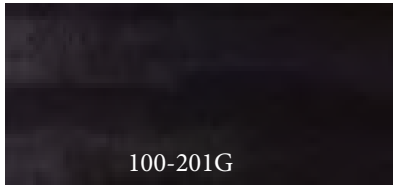


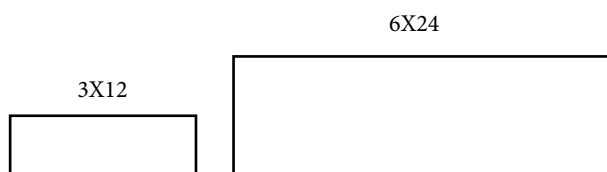
## Evolve

Evolve is a porcelain wall tile with an urban aesthetic that uses raw textures and gentle colors to create harmonious color options.

1. Available in 13 colors in glossy finish only
2. Sizes: 3x12, 6x24
3. Has 30% recycled content (Post & Pre Consumer)



### SIZES



USA  
MADE/STOCK



**1. FINISHES:**

**Matte and Glossy**

**Type: Ceramic Wall Tile**

**Application: Indoor**

**Thickness: 7.4**

**Recommended Grout Joint: 1/8" or greater**

**All sizes modular with 3/16" grout joint**

**2. TECHNICAL DATA**

SPECS	TEST METHOD	INDUSTRY STANDARD	MILE <sup>®</sup> STONE VALUES
WATER ABSORPTION	ASTM C373	≤0.5%	≤0.4%
CHEMICAL RESISTANCE	ASTM C650	<i>A tile sample is placed in continuous contact with a variety of chemicals for 24 hours. No sample must show visible defects.</i>	NOT AFFECTED
D.C.O.F. AcuTest <sup>®</sup>	ANSI A326.3	≥0.42% WET	≥0.42% WET
STAIN RESISTANCE	ASTM C1378	<i>staining agents for 24 hours followed by four cleaning procedures. Results are recorded post cleaning.</i>	NOT AFFECTED
BREAKING STRENGTH	ASTM C648	≥250 lb/ft <sup>2</sup>	8mm ≥300 lb/ft <sup>2</sup>
RESISTANCE TO FREEZE	ASTM C1026	<i>A tile sample is subjected to repeated processes of freezing and thawing. Sample must show no visible</i>	RESISTANT
WARPAGE EDGE	ASTM C485	<i>Warpage ± 0.4% or ± 0.07 in</i>	± 0.4%
WARPAGE DIAGONAL	ASTM C485	<i>Warpage ± 0.4% or ± 0.07 in</i>	± 0.4%
WEDGING	ASTM C502	<i>± 0.25% or ± 0.03 in</i>	± 0.25%
THICKNESS	ASTM C499	<i>Range: ± 0.04 in</i>	≤ 0.04 in

**3. INSTALLATION**

All installation work using Mondani Collection tiles will conform to the standards set forth in the latest version of ANSI A108/118 and/or the TCNA Handbook for Ceramic Tile installations.

Installation or setting materials:

Movement joints shall be provided throughout the tile and work will conform to ANSI Specification A108.01-3.7; A108.02 – 4.4. and TCNA Details EJ171.

Setting materials used will conform to the ANSI 118.4 standard or greater and be recommended by the selected manufacturer for the installation & setting materials for ceramic or porcelain tile based on the application requirements.





100-202G WALL



100-205G WALL



100-211G WALL  
100-210G WALL



100-209G WALL  
100-210G WALL