

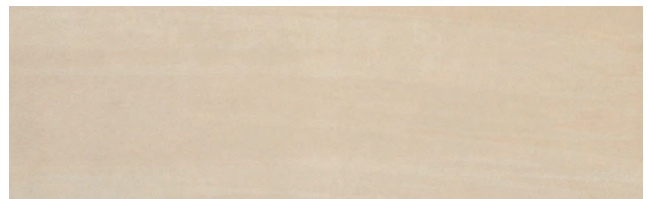
Destination

Tone on tone directional lines create the contemporary look of Destination. The directional pattern can be installed in the same direction or in a random fashion.

1. 4 sizes: 12x24, 24x24, 24x48, 6x24.
2. 24x24 and 24x48 size not available in color 400-104M
3. 4 colors
4. Matte finish
5. Mosaics and trim available
6. Rectified



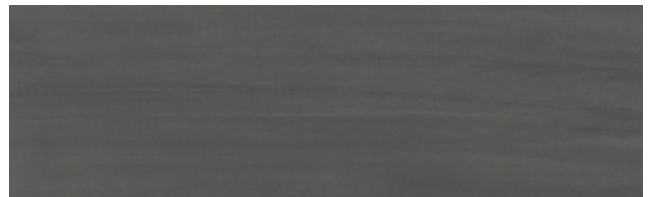
400-101M



400-102M



400-103M

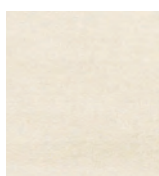


400-104M

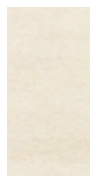
Sizes, Mosaics and Trims



24x48



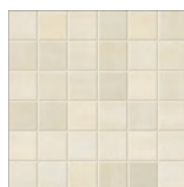
24x24



12x24



6x24



2x2 mosaic
Sheet Size: 12x12



Bullnose
3x24



Cove Base
6x12

USA

MADE/STOCK





Floor and Wall Solutions

Order Samples at
331-702-2178
www.mondanicollection.com

1. FINISHES:

Matte

Thickness: 9 mm

Recommended Grout Joint: 3/32" or greater

All sizes modular with 3/16" grout joint

Grout joints of 1/8" inch or less, may require floor flatness values in excess of the 1/4" in 10' (or 1/16" in 1.0') standard required by ANSI.

2. TECHNICAL DATA

Physical Properties	ASTM Test	Industry Standards	Mondani Results
Water Absorption	C373	Impervious <0.5%	≤ 0.1%
Bond Strength	C482	≥ 50 psi	≥ 200 psi
Breaking Strength	C648	≥ 250 lbf	≥ 400 lbf
	Scratch Test		
Hardness (Mohs)	(No regulated)	Range 0 - 10	6
Frost Resistance		No sample must show alterations to surface	
(Freeze/Thaw)	C1026	No Requirement	Resistant
Chemical Resistance	C650	Range E - A	Unaffected
	DCOF Acutest		
Coefficient of Friction (Dynamic)	sn (wet)	≥ 0.42*	≥ 0.42
Aesthetic Classification	Visual Evaluation Shade & Texture	Range V0 - V4	V2

* All values given are for matte. No values are given for polished material. Mondani Collection. does not recommend polished surfaces in area subject to exposure from grease, oil or water.

For level interior spaces to be walked upon when wet (see ANSI A137.1 section 6.2.2.1.10 – Section 9.6 for test procedure).

3. INSTALLATION

All installation work using Mondani Collection tiles will conform to the standards set forth in the latest version of ANSI A108/118 and/or the TCNA Handbook for Ceramic Tile installations.

Installation or setting materials:

Movement joints shall be provided throughout the tile and work will conform to ANSI Specification A108.01-3.7; A108.02 – 4.4. and TCNA Details EJ171.

Setting materials used will conform to the ANSI 118.4 standard or greater and be recommended by the selected manufacturer for the installation & setting materials for ceramic or porcelain tile based on the application requirements.



MONDANI

COLLECTION

Floor and Wall Solutions

Order Samples at
331-702-2178
www.mondanicollection.com



USA
MADE/STOCK

