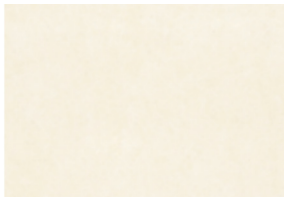


Building Blocks

Building Blox is a natural stone look with several great color options.

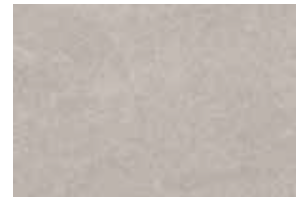
1. 5 colors
2. All available in Matte or Polished
3. Rectified color body porcelain
4. Mosaics and trim available in matte finish only



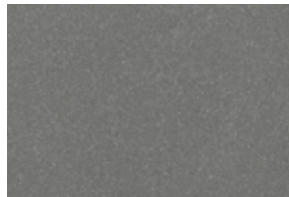
200-101



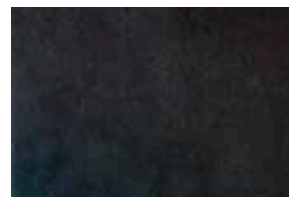
200-102



200-104

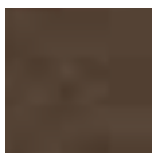


200-106



200-107

Sizes, Mosaics and Trims



24x24



12x24



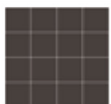
6x24



**Bullnose
3x12**



**Cove Base
6x12**



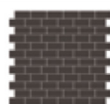
**3x3 Mosaic
Sheet Size: 12x12**



**1x2 Herringbone
Mosaic
Sheet Size: 12x12**



**1x12 Mosaic
Sheet Size: 12x12**



**3x6 Brick Mosaic
Sheet Size: 12x12**



Floor and Wall Solutions

Order Samples at

331-702-2178

www.mondanicollection.com

1. FINISHES:

Matte and Polished

Thickness: 8 mm

Recommended Grout Joint: 3/32" or greater

All sizes modular with 3/16" grout joint

Grout joints of 1/8" inch or less, may require floor flatness values in excess of the 1/4" in 10' (or 1/16" in 1.0') standard required by ANSI.

2. TECHNICAL DATA

Physical Properties	ASTM Test	Industry Standards	Mondani Results
Water Absorption	C373	Impervious <0.5%	< 0.1%
Bond Strength	C482	≥ 50 psi	≥ 200 psi
Breaking Strength	C648	≥ 250 lbf	≥ 400 lbf
Hardness (Mohs)	(No regulated)	Range 0 - 10	≥ 7
Frost Resistance (Freeze/Thaw)	C1026	No sample must show alterations to surface	Resistant
Chemical Resistance	C650	No Requirement	Unaffected
Coefficient of Friction (Dynamic)	DCOF Acutest (wet)	≥ 0.42*	≥ 0.42
Aesthetic Classification	Visual Evaluation Shade & Texture	No Requirement	V2
		Range V0 – V4	

* All values given are for matte and semi-polished. No values are given for polished material. Mondani Collection does not recommend polished surfaces in area subject to exposure from grease, oil or water.

For level interior spaces to be walked upon when wet (see ANSI A137.1 section 6.2.2.1.10 – Section 9.6 for test procedure).

3. INSTALLATION

All installation work using Mondani Collection tiles will conform to the standards set forth in the latest version of ANSI A108/118 and/or the TCNA Handbook for Ceramic Tile installations.

Installation or setting materials:

Movement joints shall be provided throughout the tile and work will conform to ANSI Specification A108.01-3.7; A108.02 – 4.4. and TCNA Details EJ171.

Setting materials used will conform to the ANSI 118.4 standard or greater and be recommended by the selected manufacturer for the installation & setting materials for ceramic or porcelain tile based on the application requirements.





Floor and Wall Solutions

Order Samples at
331-702-2178
www.mondanicollection.com



USA
MADE/STOCK

