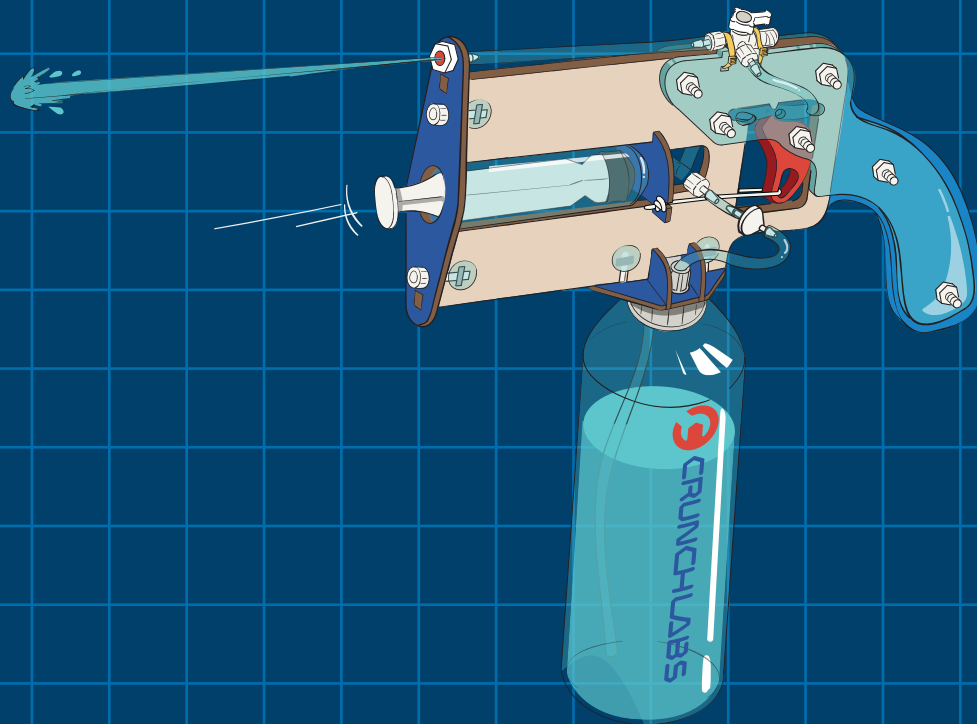




BUILD
BOX



WET BANDIT

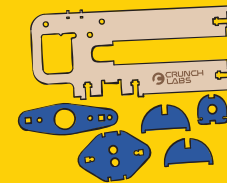


NEW VIDEO UNLOCKED

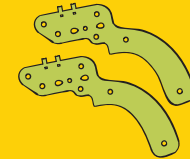
BUILD ALONG & LEARN WITH MARK ROBER



[CRUNCHLABS.COM/WATER](https://crunchlabs.com/water)



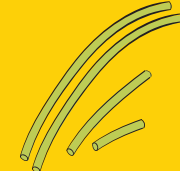
wood pieces



acrylic handles



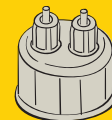
foam handle



tubes



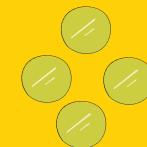
elastic cord



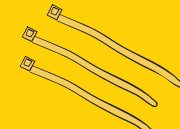
bottle adapter



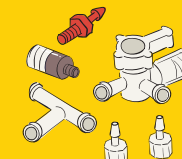
trigger



clear stickers



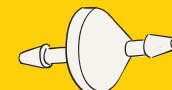
zip ties



valve kit



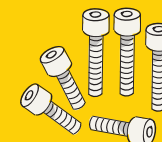
syringe



one way valve



nuts



bolts

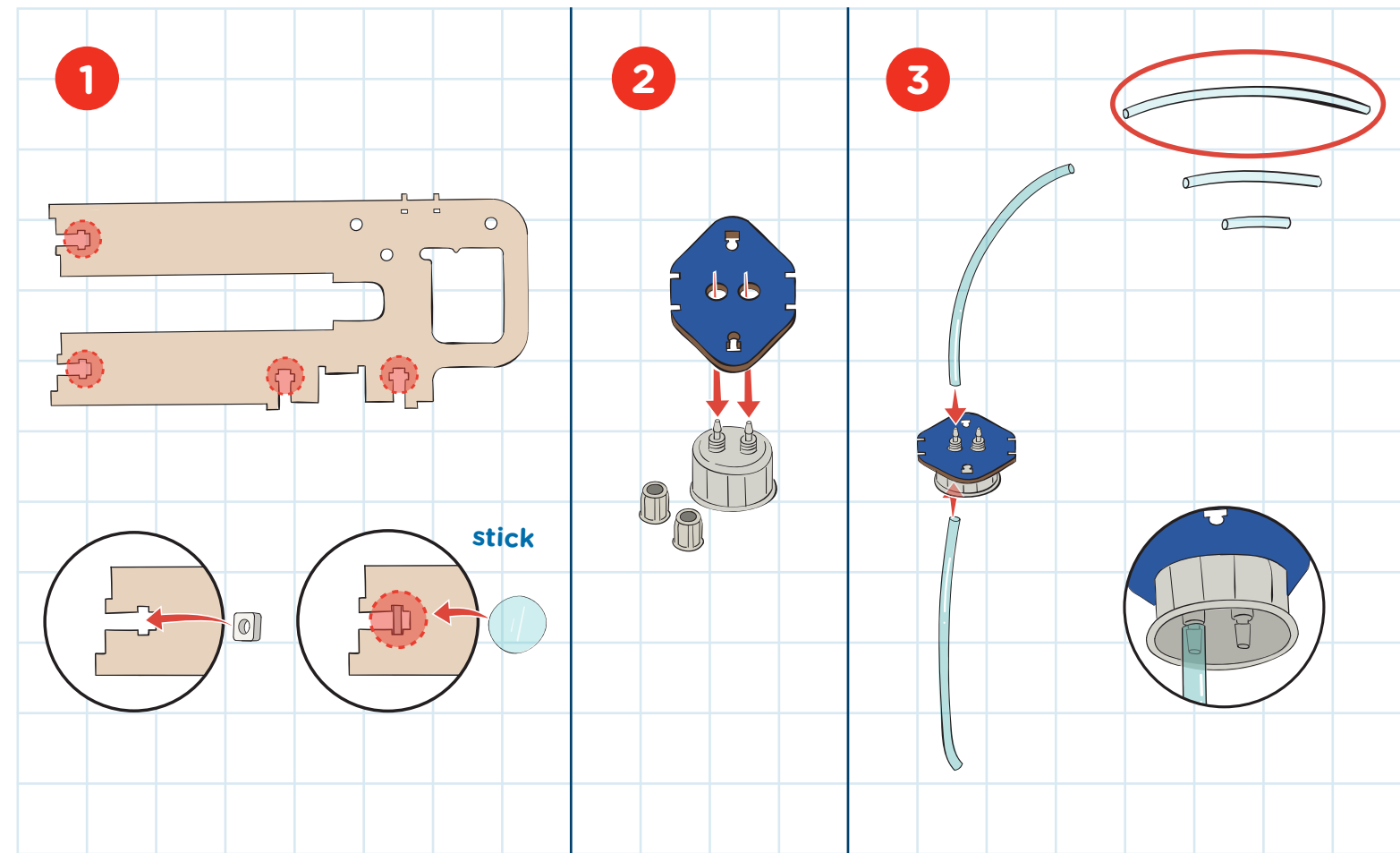


water bottle

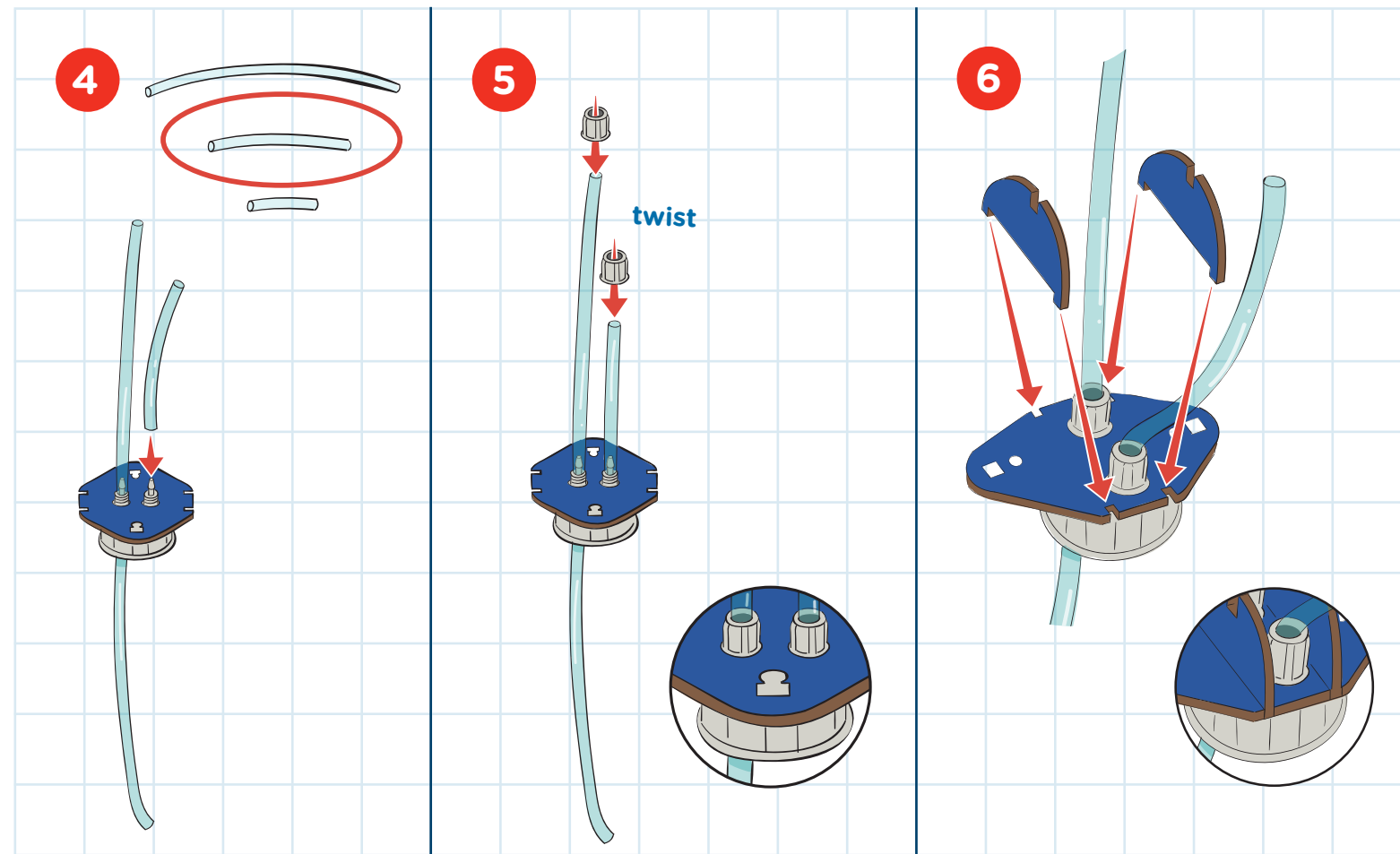
PARTS

For missing and replacement parts, visit "My Account" at crunchlabs.com and we'll ship them to you for free.

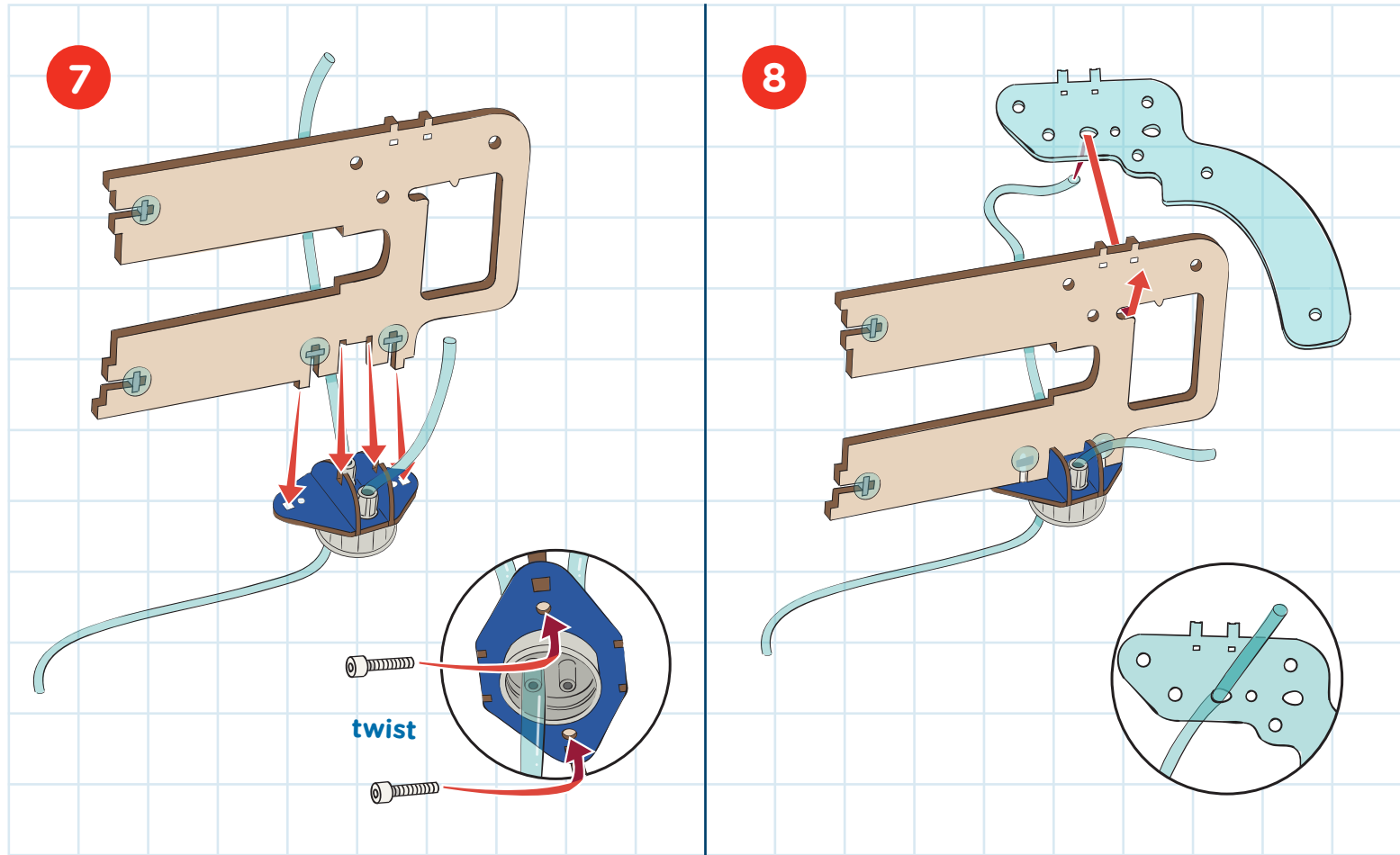
BUILD



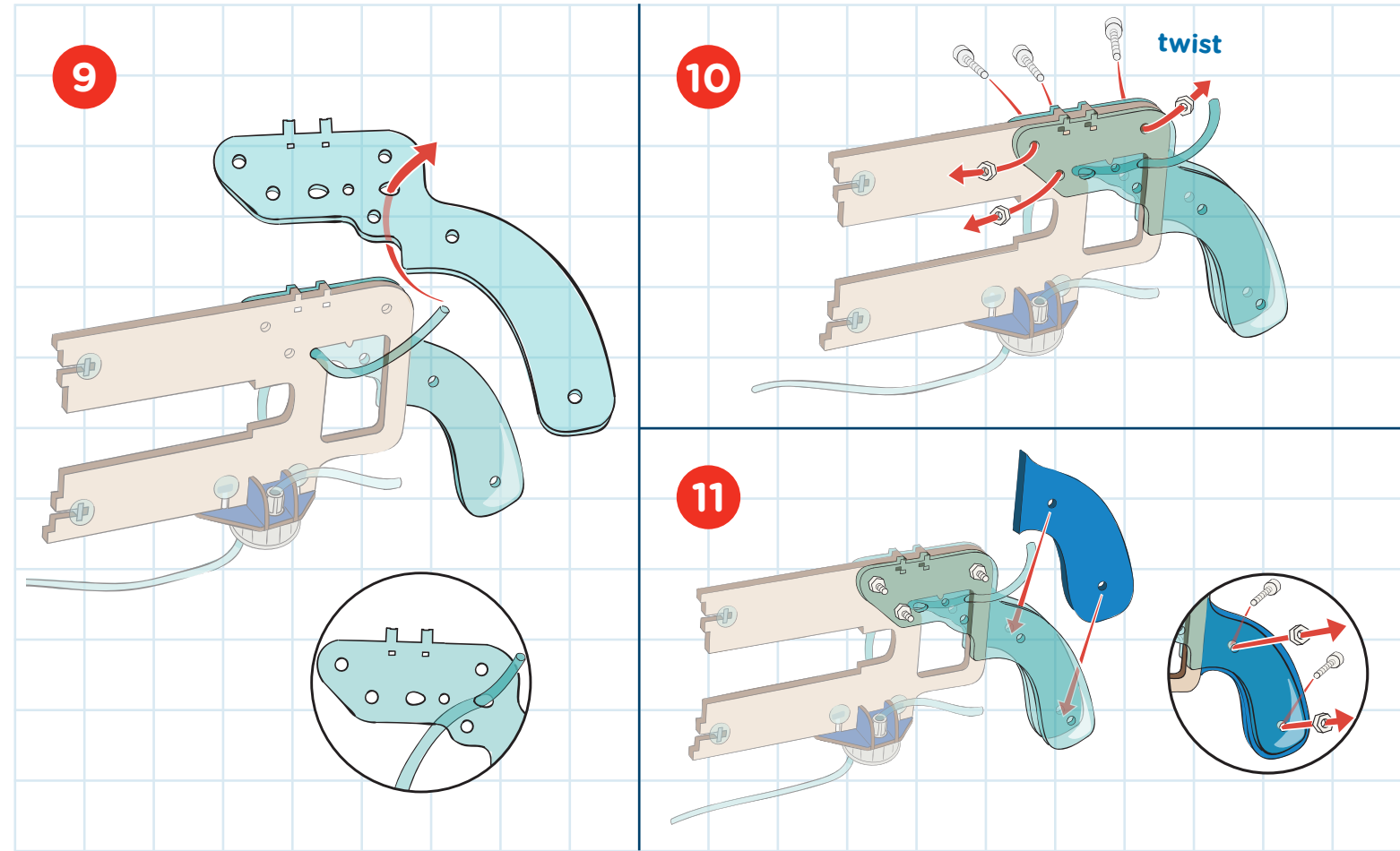
BUILD



BUILD



BUILD



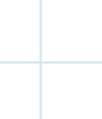
BUILD

12

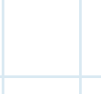
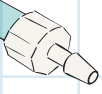
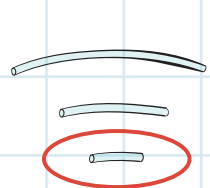
twist



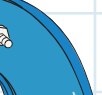
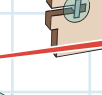
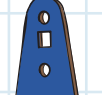
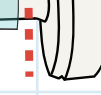
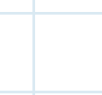
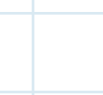
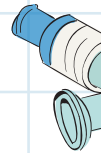
twist



13



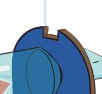
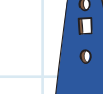
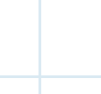
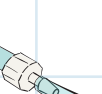
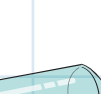
14



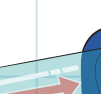
◀◀ **PRO TIP!**
One-way valves allow fluid to pass through in **one direction** but not the other. You can discover the direction of flow by looking at the valve's body, which is shaped like an arrow.

BUILD

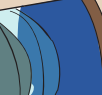
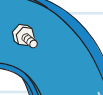
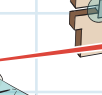
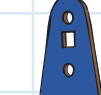
15



16



17



BUILD

18

twist

19

20

twist

21

BUILD

21

click
click

22

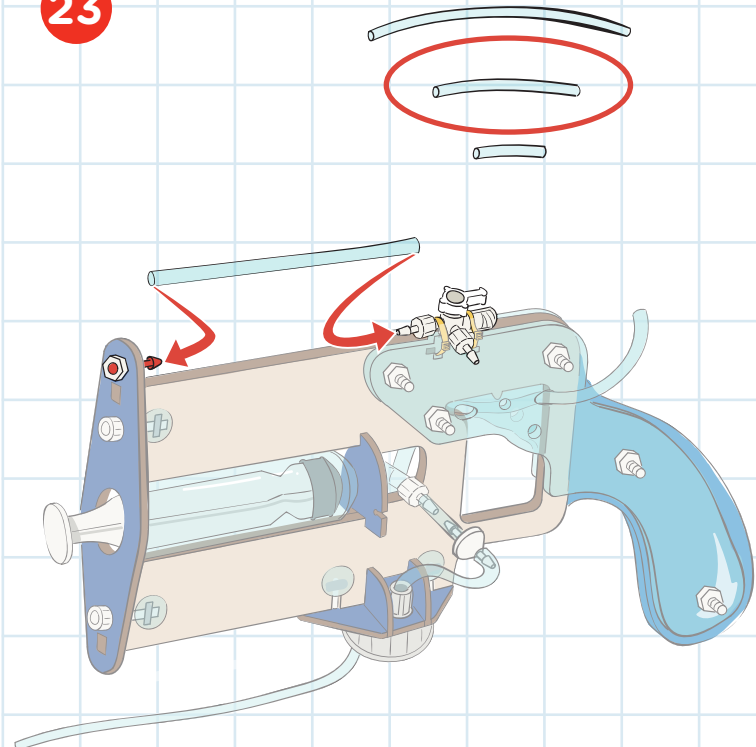
23

snip

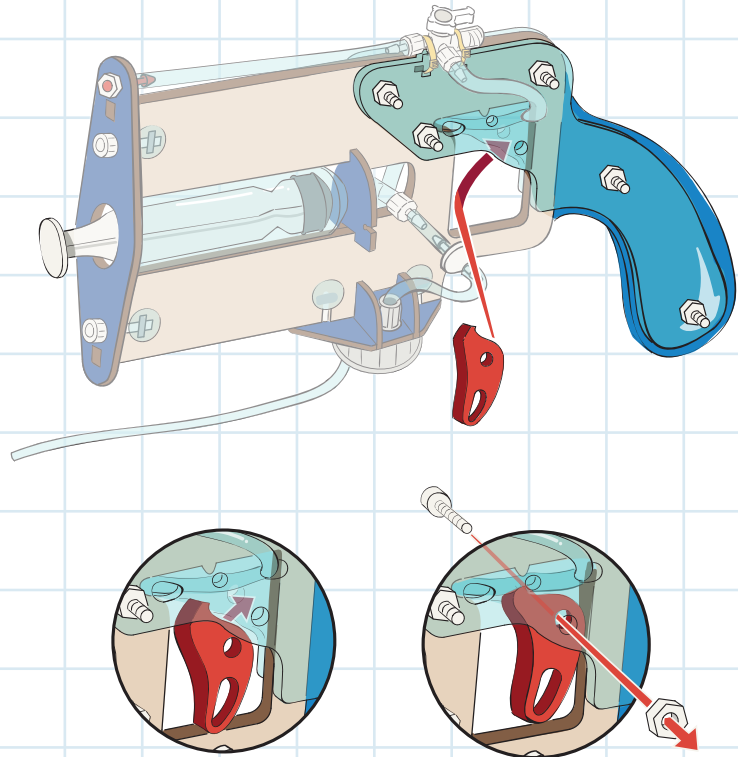
24

BUILD

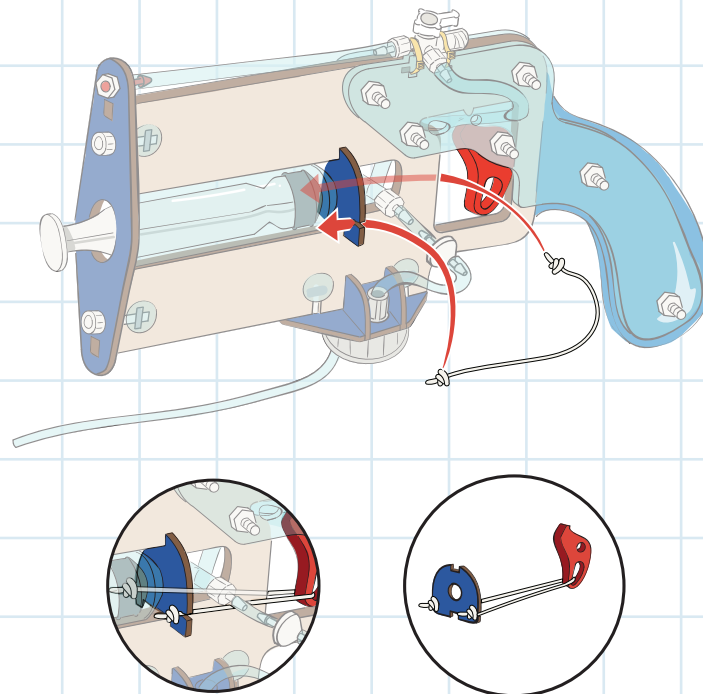
23



24



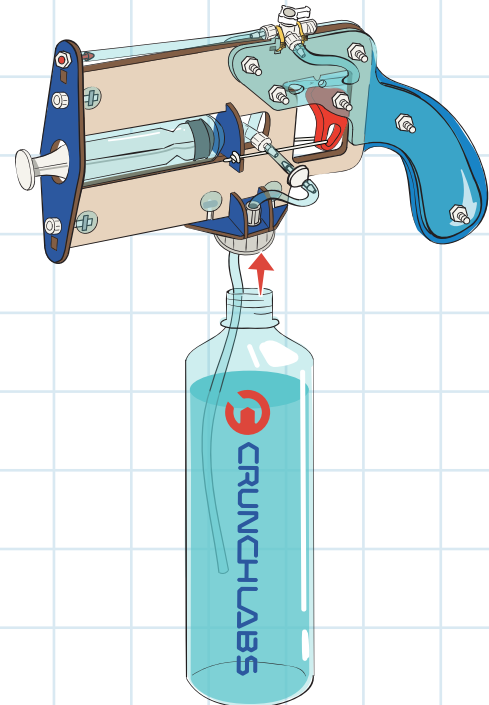
25



26

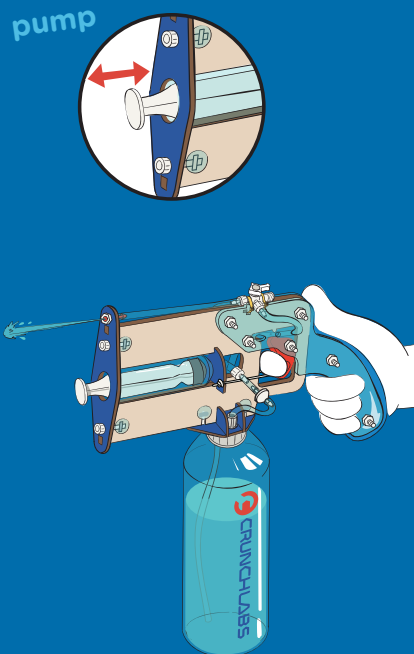


27

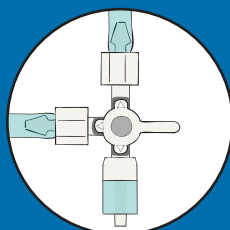


BUILD

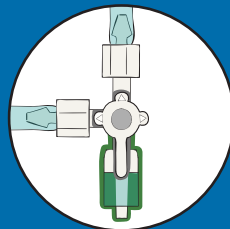
TEST



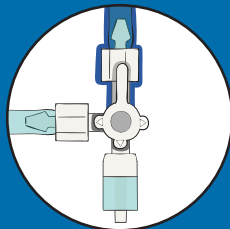
Having trouble? Watch the video at crunchlabs.com/water



OFF

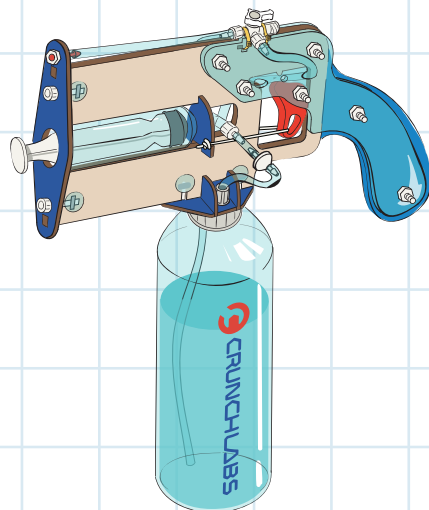


FIRE



PRANK

BUILT!

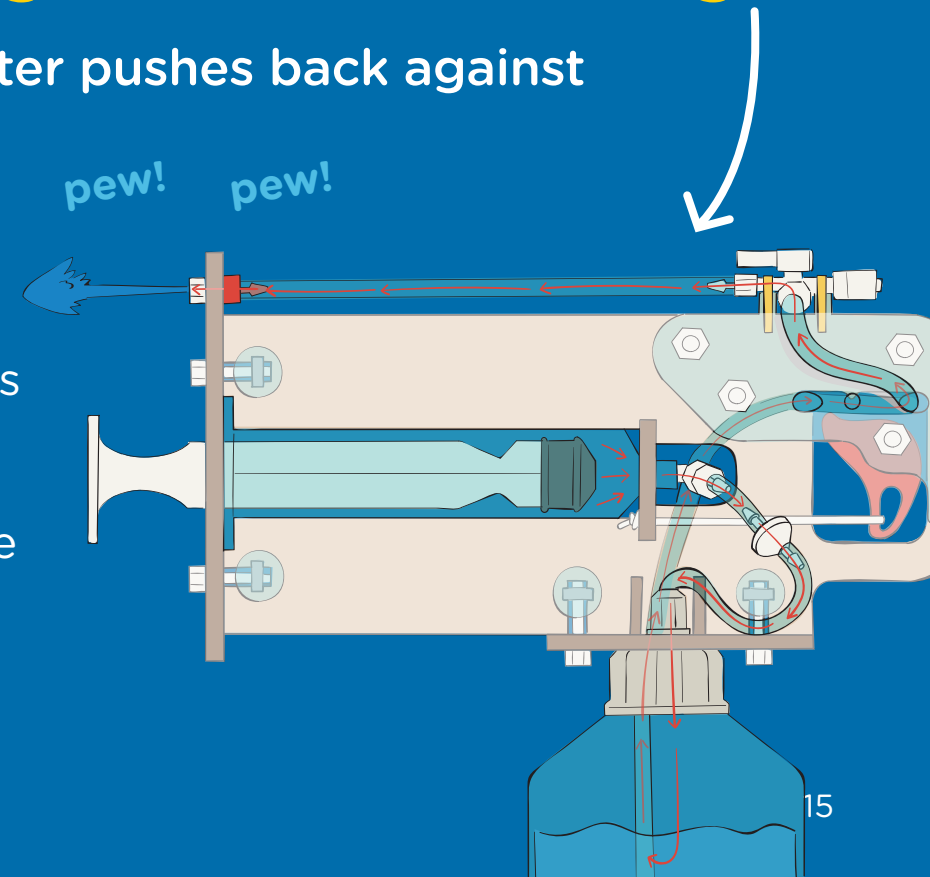


THINK

Water pressure is the force created by compressed water against its surroundings.

Basically, it's how much water pushes back against its container.

When pressurized, water molecules push off each other towards lower pressure areas. Opening a soda bottle produces a hiss because the pressurized air inside is escaping! When you turn on a faucet, or squeeze the trigger of the Wet Bandit, **pressurized water** in the tank forces its way out.



THINK

Find water pressure at work.

With each pump of the syringe on the Wet Bandit, you're forcing more air into the pressure chamber above the water. The air pushes down against the water so that when you squeeze the trigger the water is pushed through the tubes and out of the system to a lower pressure area.



ANCIENT PLUMBING

Ancient human societies figured out how to use water pressure, gravity, and plumbing to irrigate crops, pipe fresh drinking water into cities, and flush waste out to sea.



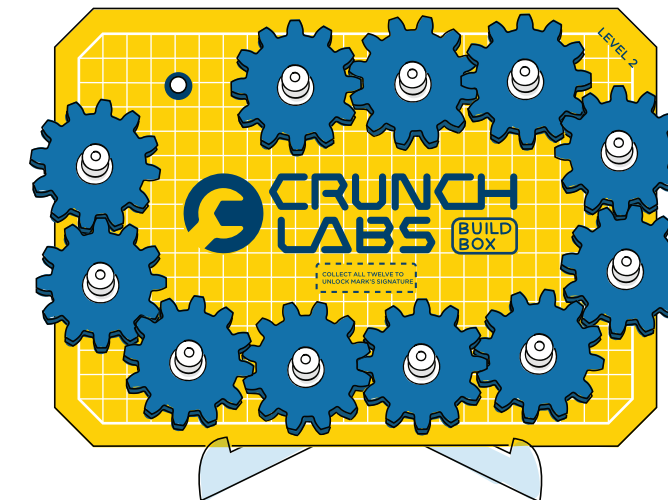
VALVES

We control water using valves, which act like a light switch: shutting off the flow of water while you pressurize the tank, and letting it rush out when you open the valve. The valve on top of the Wet Bandit acts like a traffic light, changing which way the water will flow.

THINK

CONGRATULATIONS!

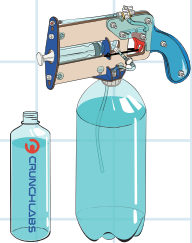
You earned a gear badge for water pressure



Don't forget to add your gear badge to your gear train!

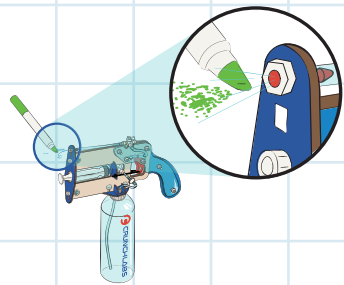
CRUNCH

It's crunch time! Use your engineering superpowers to keep building.



HIGH VOLUME

Upgrade the reservoir on your Wet Bandit to a larger soda bottle for longer run time.



SPRAY PAINT

Pour the water out and pressurize just air. Hold the tip of a marker up to the nozzle and use the air pressure to spray ink particles!



STAY COOL

Add some ice cubes to the reservoir to super-chill the water on a hot summer day.

SHOW OFF YOUR BUILD



Share your funniest moments & coolest mods!
#crunchlabs @crunchlabs    



WARNING: Do not aim at face and eyes.

SWEEPSTAKES

Each CrunchLabs build box contains the chance to WIN a trip to visit CrunchLabs with Mark Rober! Sadly, you are not a prize winner this time. Check inside your next build box for another chance to win.

Trip includes roundtrip transportation and two (2) night's hotel accommodations for a family of four (4). Approximate value: \$4,500.

NO PURCHASE NECESSARY. Open to legal U.S. residents, 18 years of age or older. Void where prohibited. For complete Official Rules, including promotion end date and information on how to obtain a free game ticket, visit www.crunchlabs.com/win.

This toy is intended for use by children over the age of eight years. These instructions contain important information, do not throw away.

© 2024 CrunchLabs LLC, All Rights Reserved