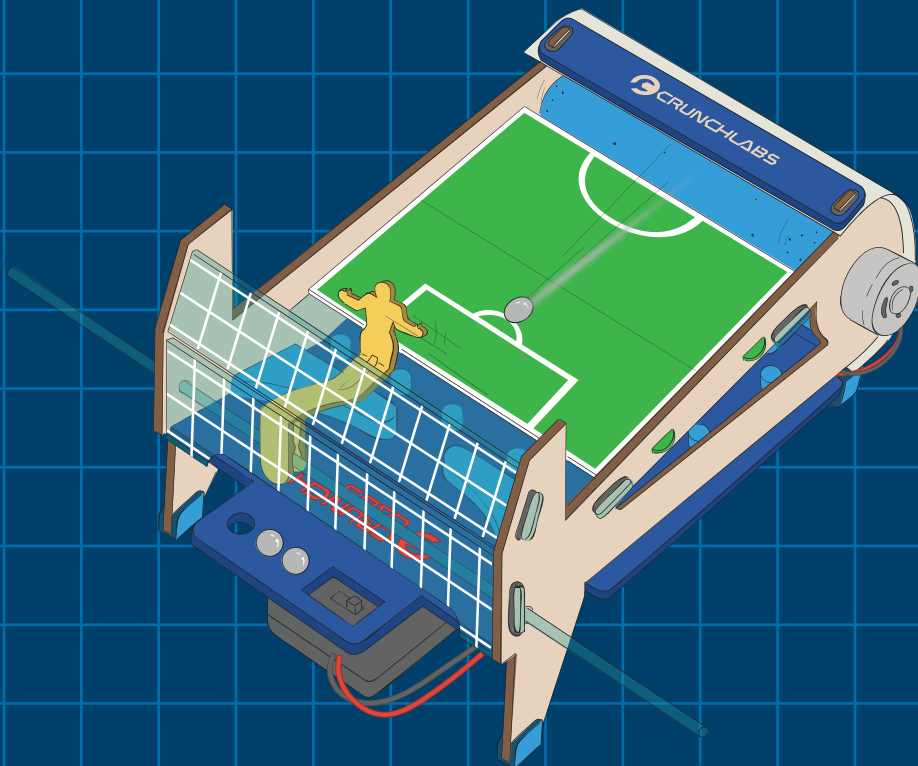




BUILD  
BOX



GALTON'S  
GOALIE



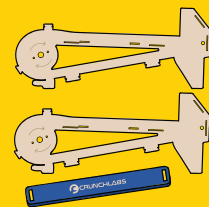
# NEW VIDEO UNLOCKED

BUILD ALONG & LEARN WITH MARK ROBER

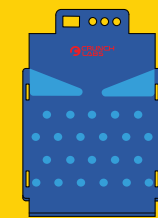


CRUNCHLABS.COM/GOAL

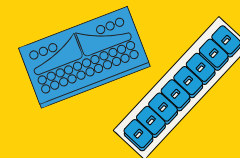
## PARTS



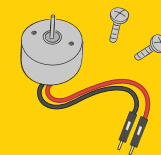
wood pieces



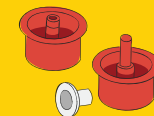
puzzle board



adhesive foam



motor



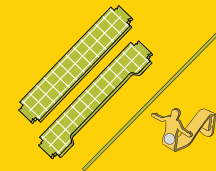
roller hub kit



o-rings



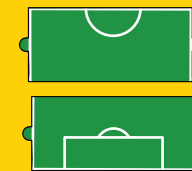
roller noodle



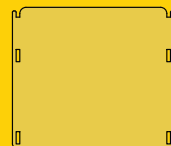
goalie kit



clear base



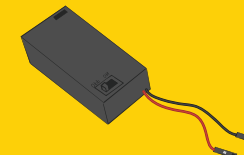
field



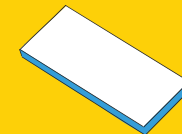
frosted cover



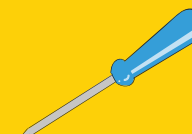
ball



battery



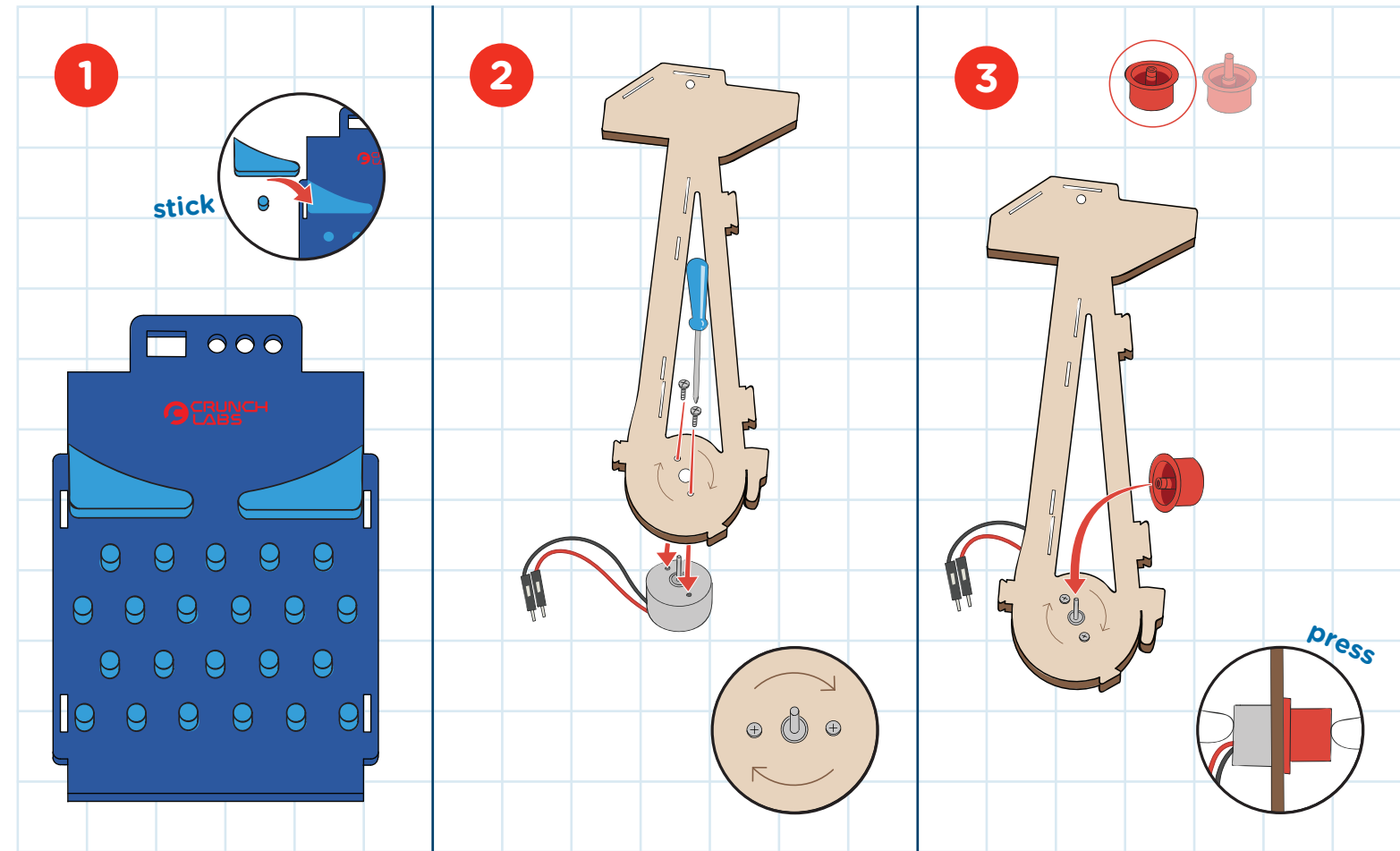
battery adhesive



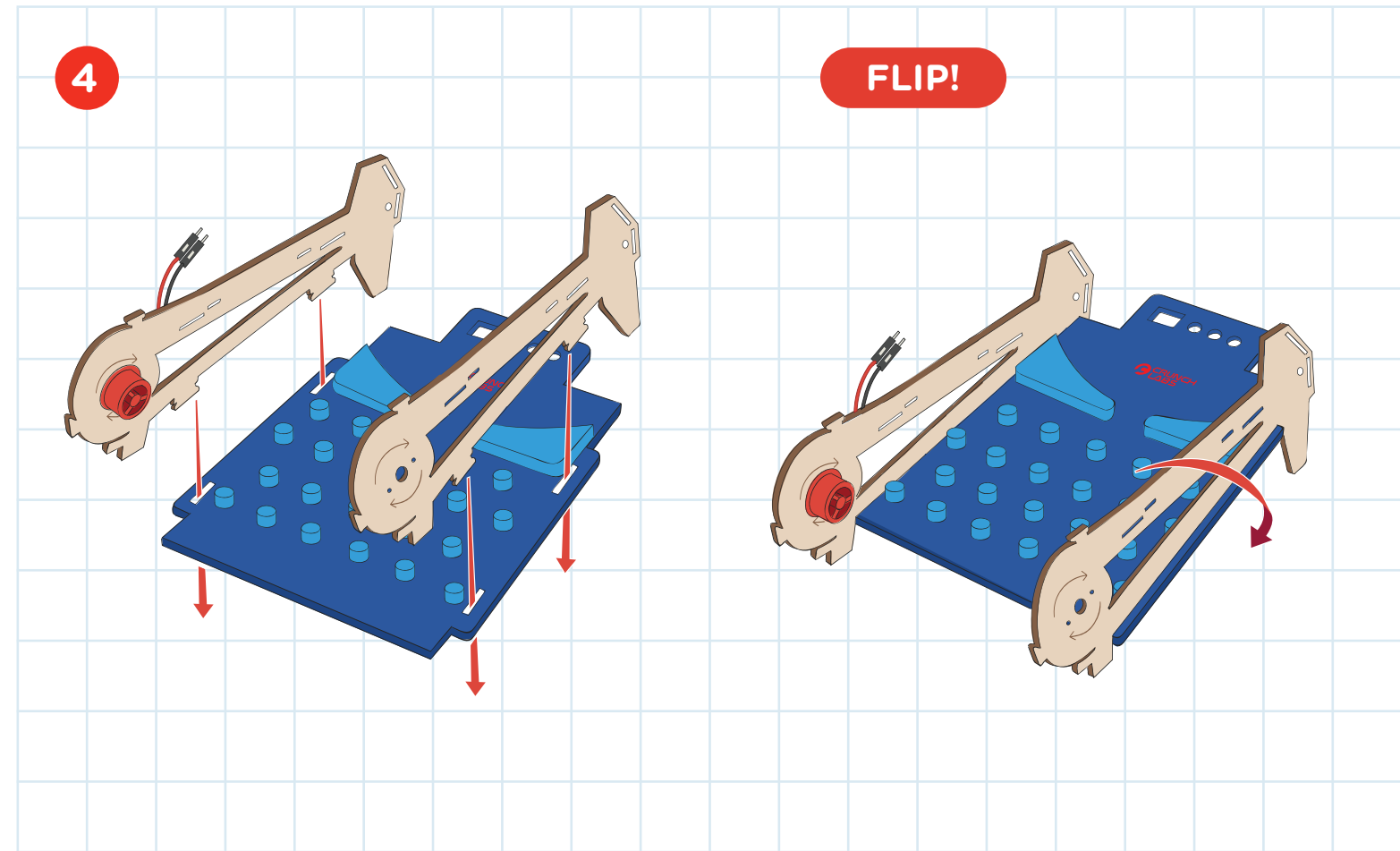
screw driver

For missing and replacement parts, visit "My Account" at [crunchlabs.com](https://crunchlabs.com) and we'll ship them to you for free.

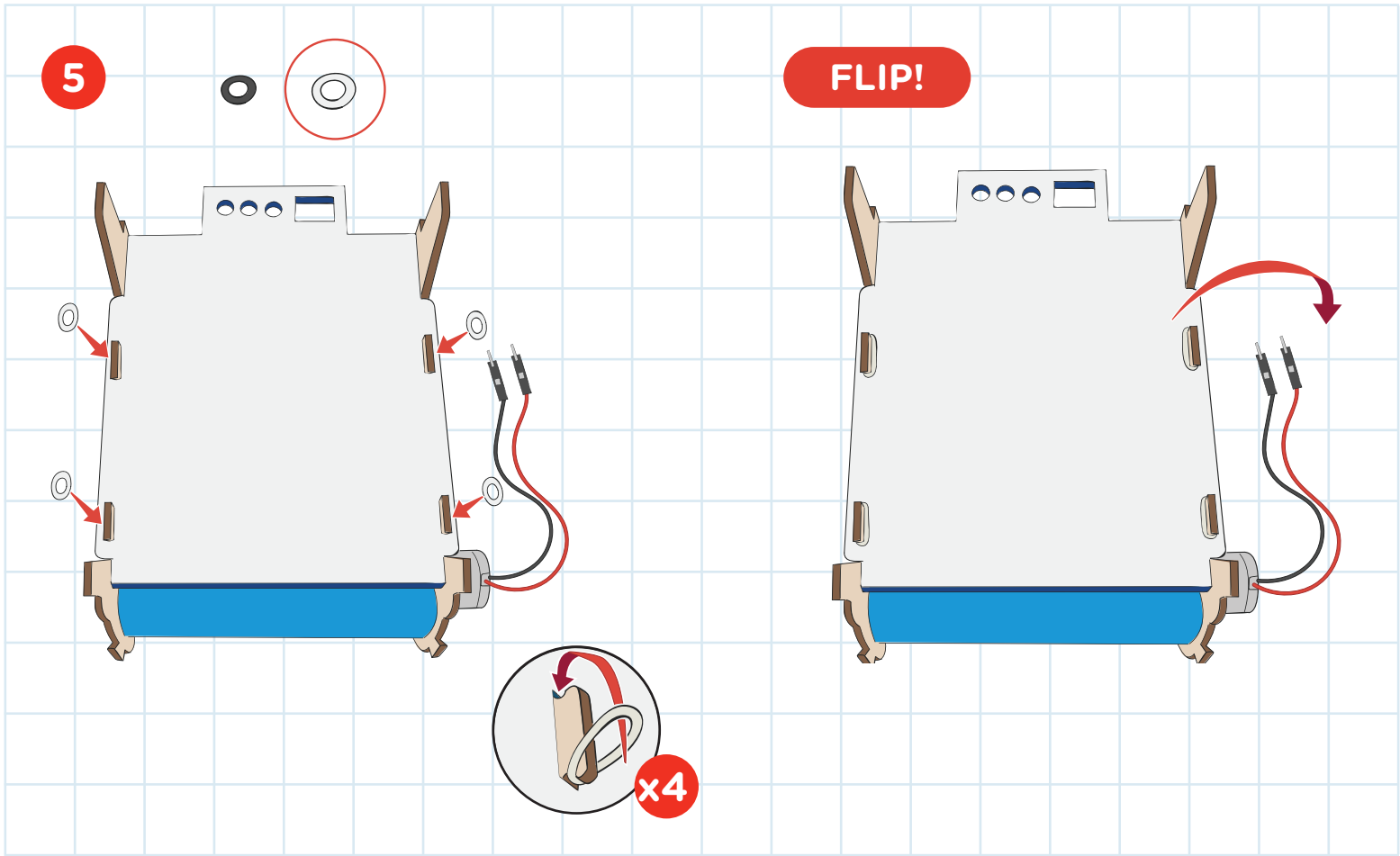
# BUILD



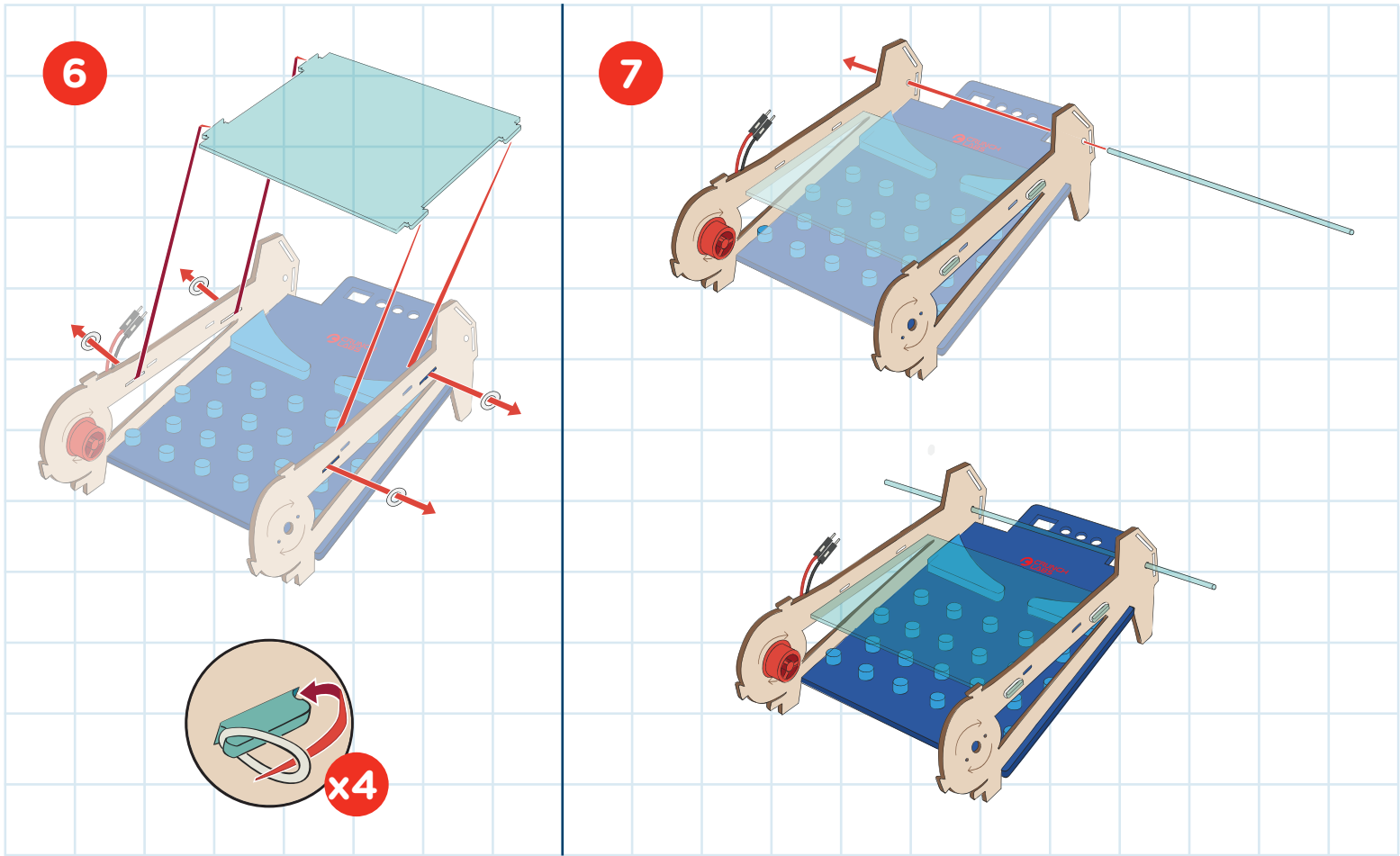
# BUILD



BUILD

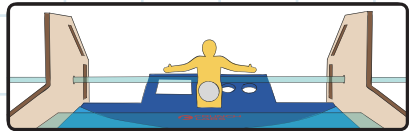
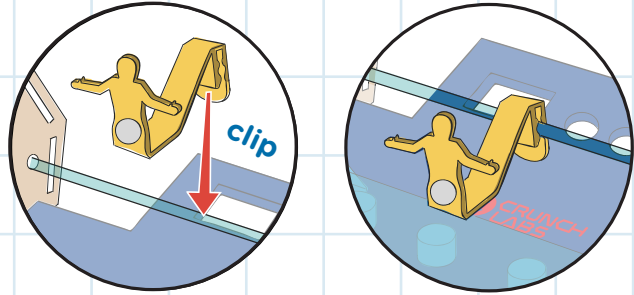


BUILD



# BUILD

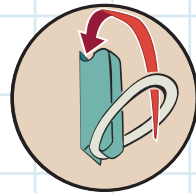
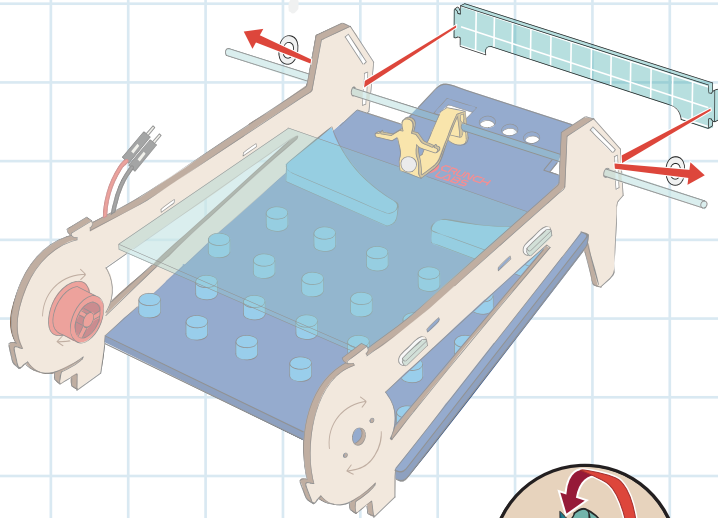
8



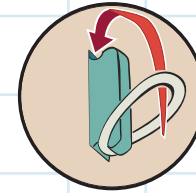
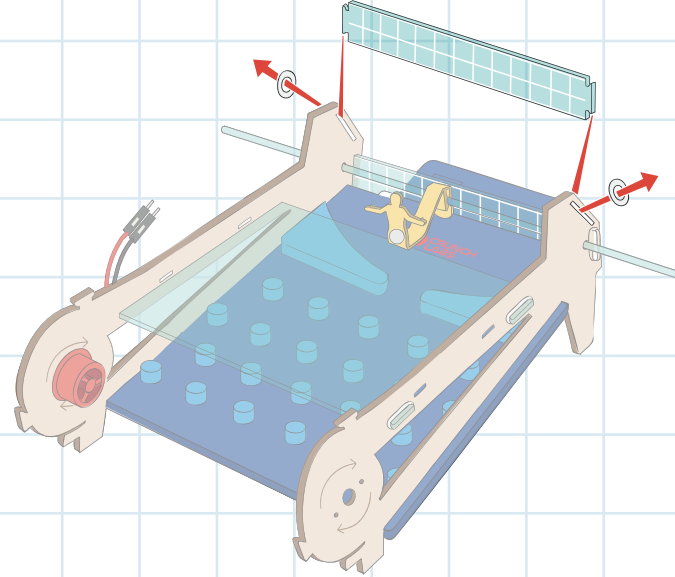
**PRO TIP!**

This is your **goalie**. Make sure your plastic rod goes through the clip behind your goal protector.

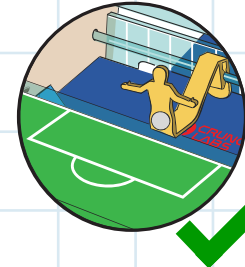
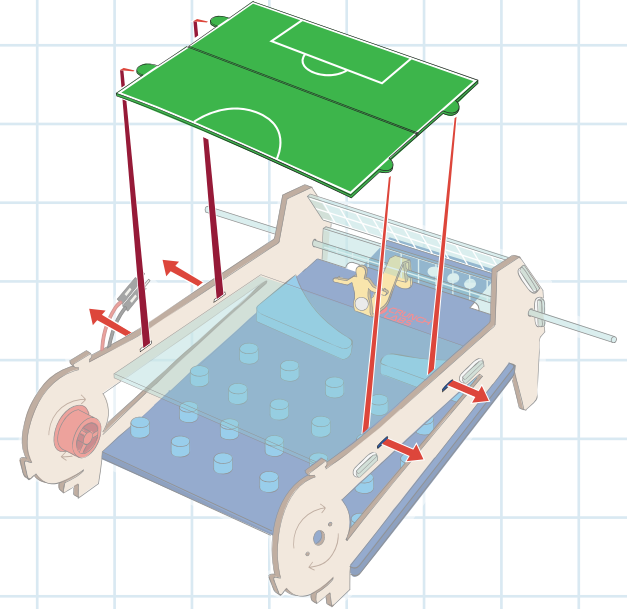
9



10



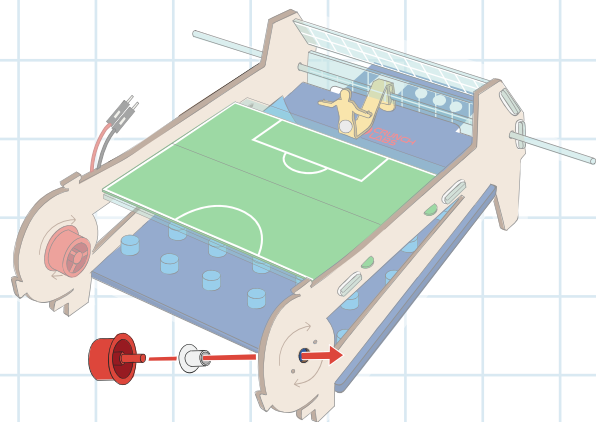
11



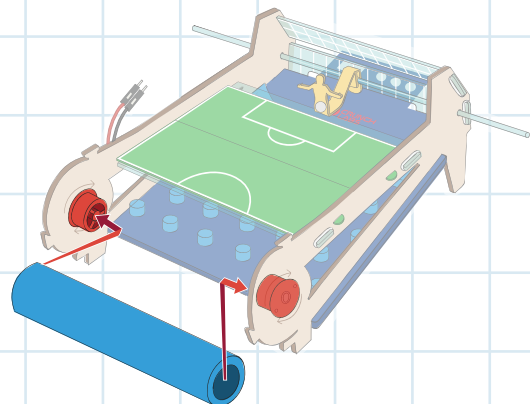
# BUILD

# BUILD

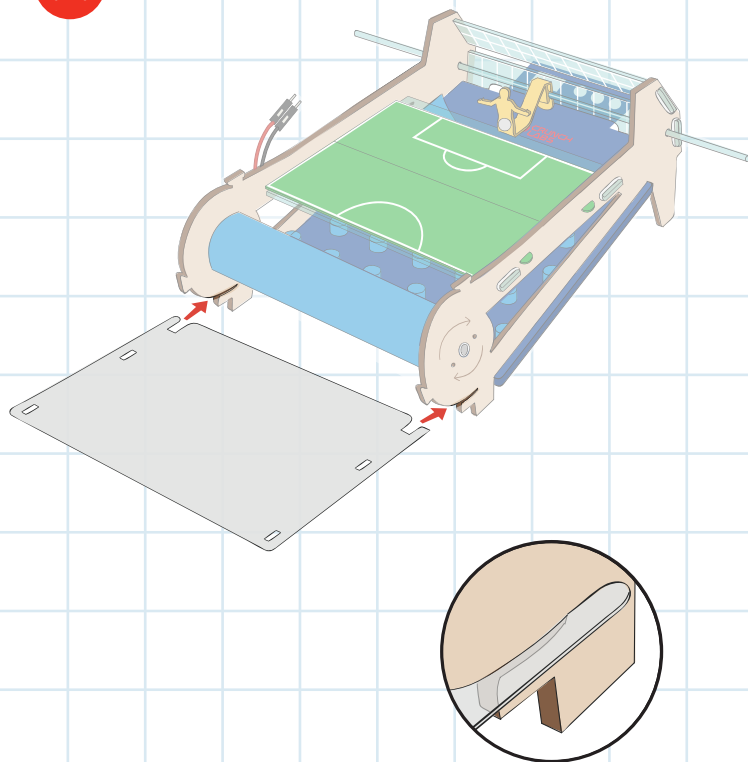
12



13

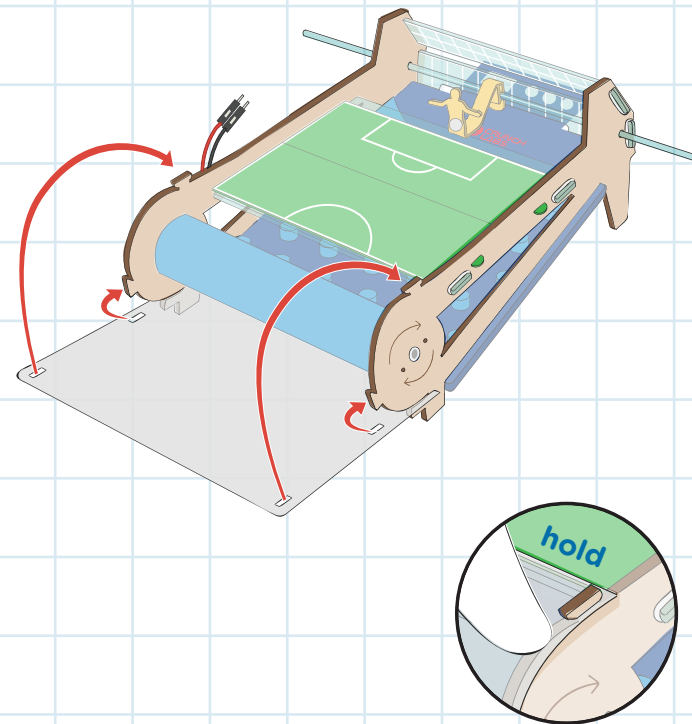


14

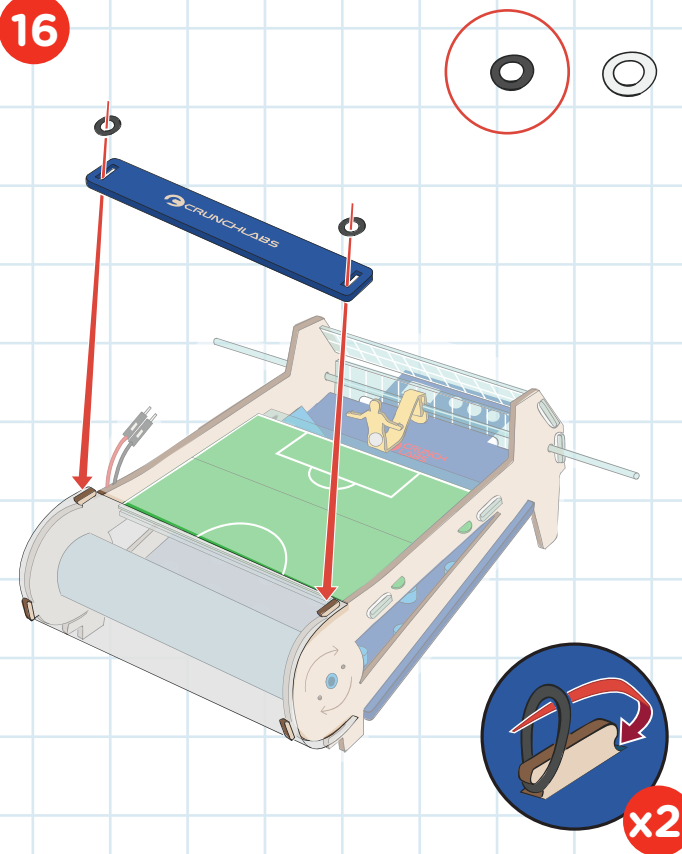


# BUILD

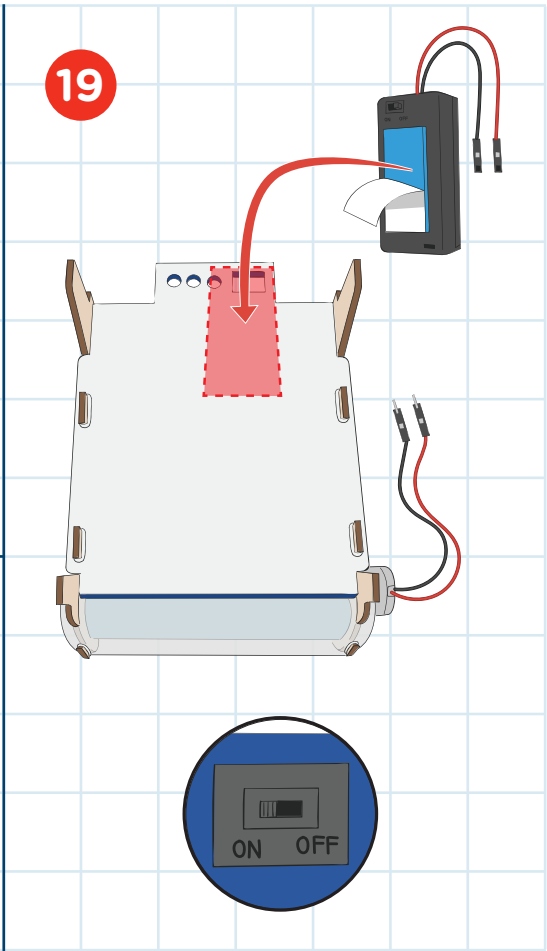
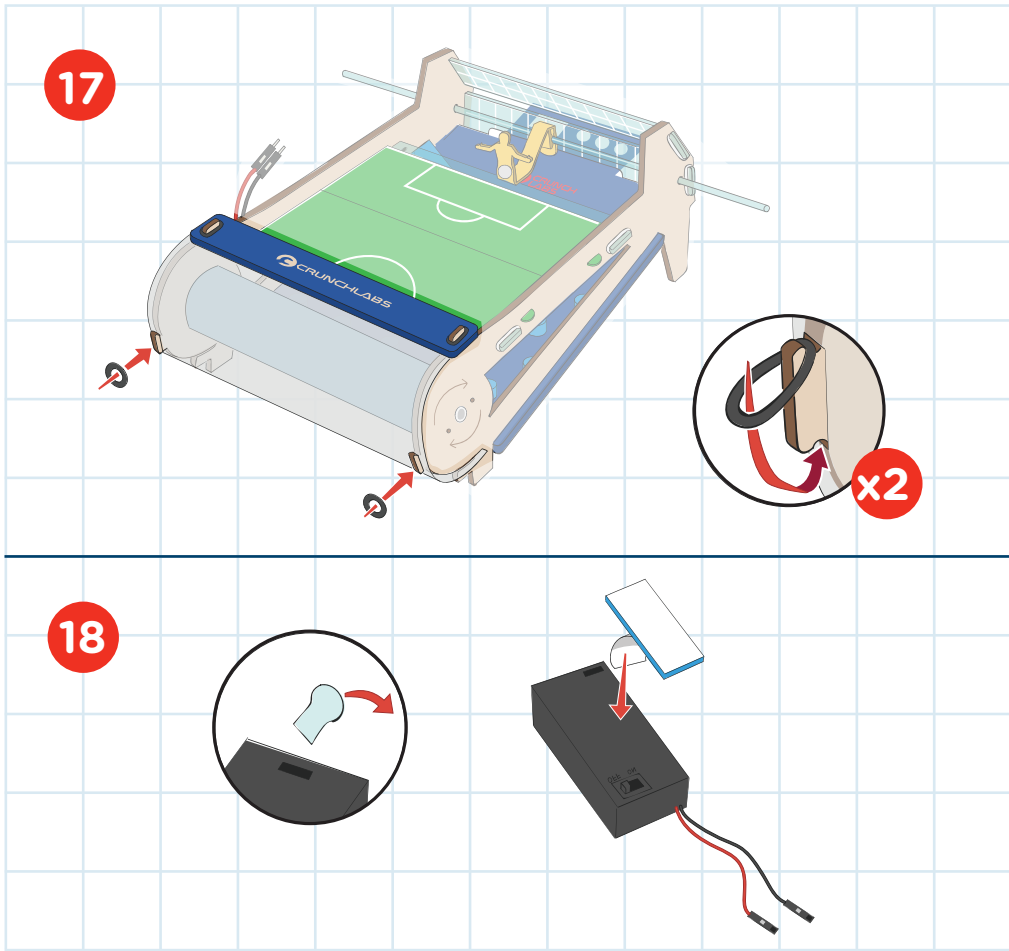
15



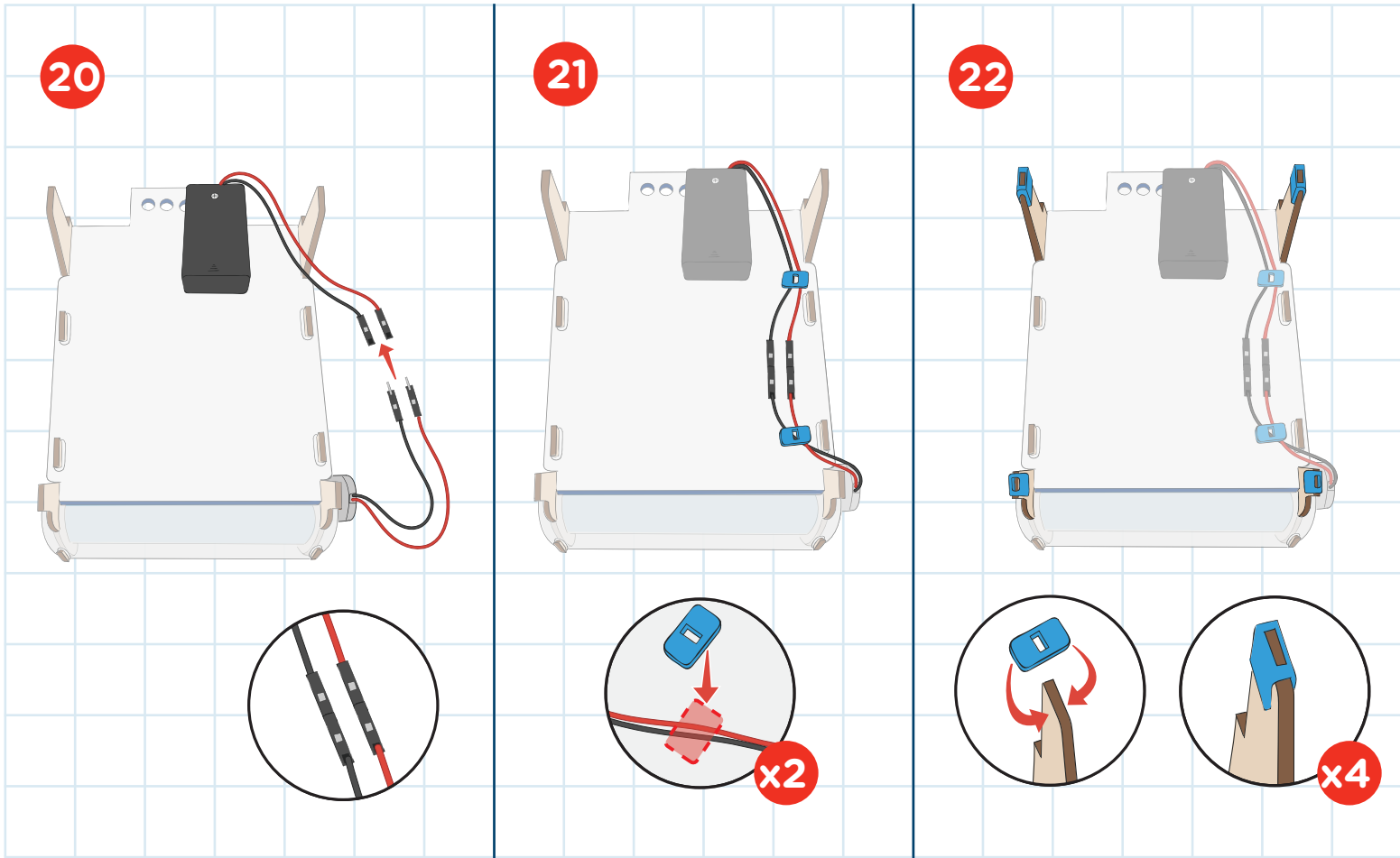
16



BUILD

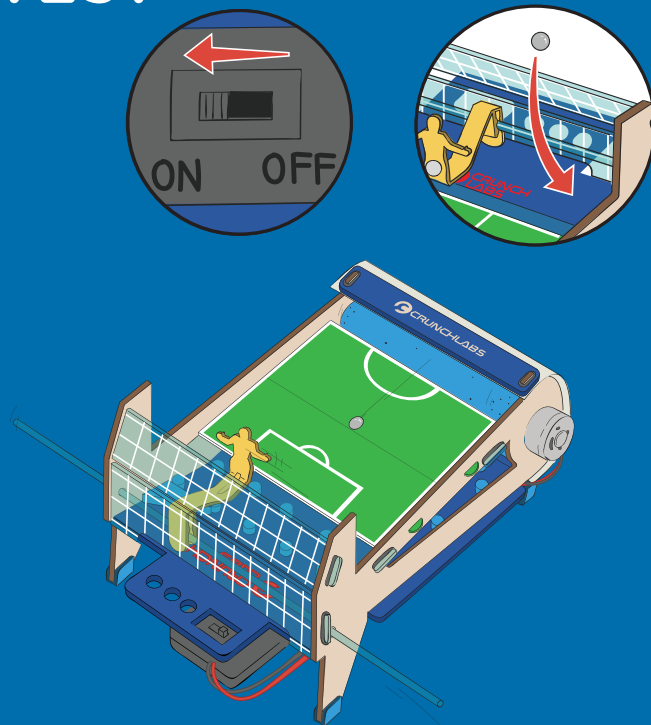


BUILD



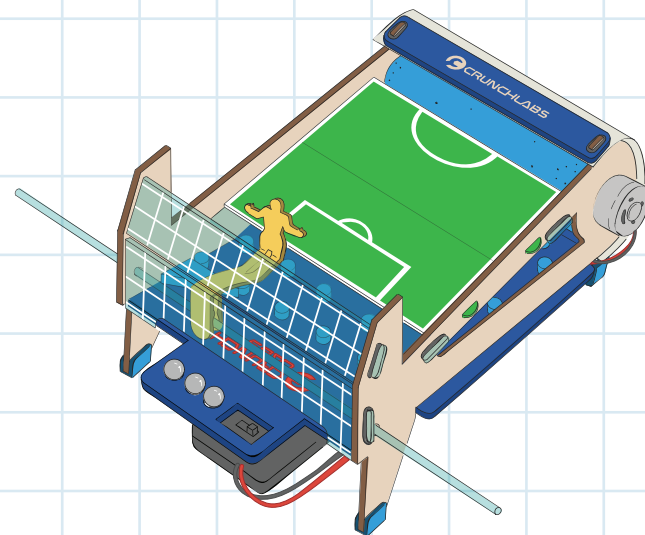


## TEST



Having trouble? Watch the video at [crunchlabs.com/goal](https://crunchlabs.com/goal)

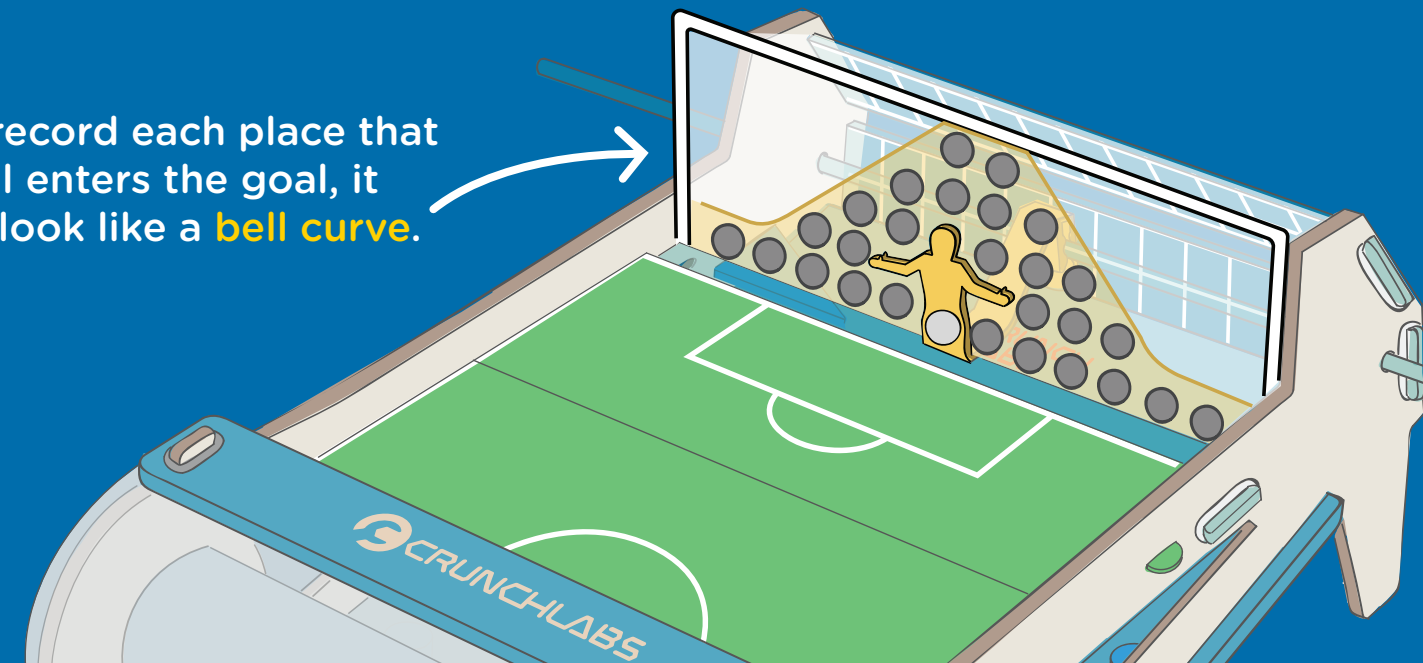
## BUILT!



## Why do we have the pegs on the board?

Without them, the ball would just shoot at the same spot every time. The pegs change the path of the ball making it harder for you to save. In Galton's Goalie, the direction of the next shot is a mystery. The ball usually lands in the middle of the goal and sometimes on the sides.

If you record each place that the ball enters the goal, it would look like a **bell curve**.

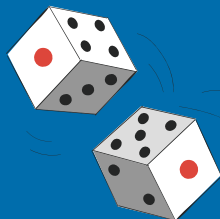




THINK

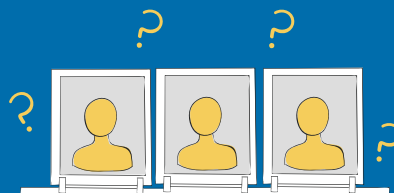
## Discover bell curves in other games!

Understanding bell curves can help you win certain games.



### TESTING YOUR LUCK

In Galton's Goalie, the ball lands in the middle most of the time. The same thing happens when rolling dice. The two numbers usually add up to 7 (like the middle of the goal), but rarely add up to 2 (like the sides of the goal).

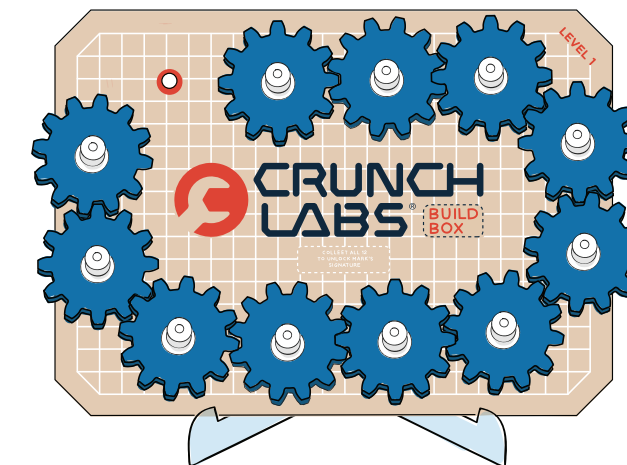
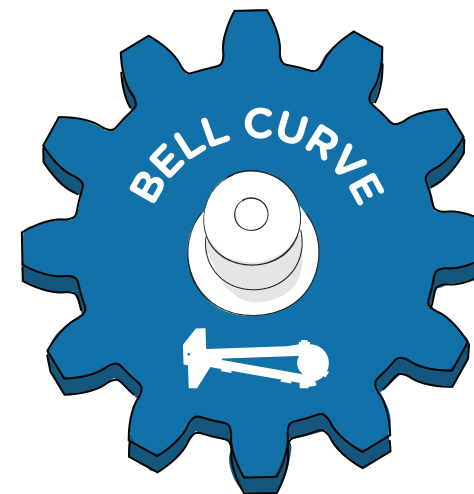


### GUESS WHO

In Mark's video on the game "Guess Who", he came up with a special guessing strategy to win more games. Mark used bell curves to predict that he would win almost every time!

THINK

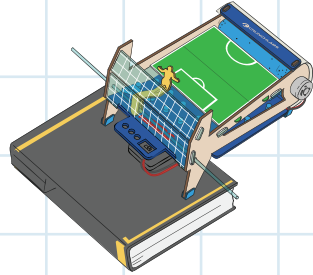
## CONGRATULATIONS! You earned a gear badge for bell curve



Don't forget to add your gear badge to your gear train!

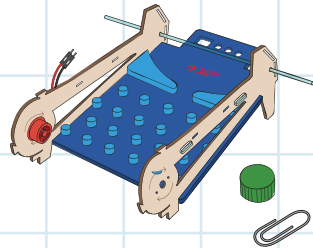
# CRUNCH

It's crunch time! Use your engineering superpowers to keep building.



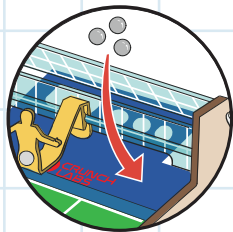
## SPEED UP

Try tilting the field to speed up the sorting process. Try to block the ball now!



## NOT SO RANDOM

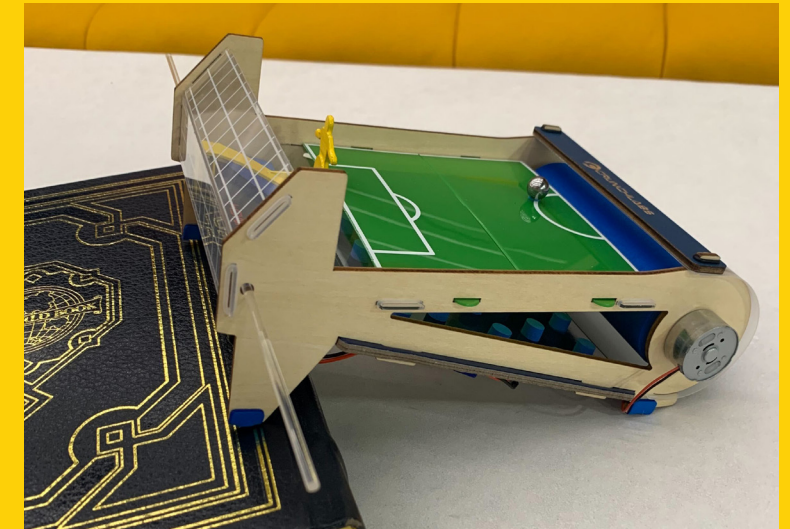
Place different obstacles on your maze board to change the outcome of the shots.



## MULTI-BALL

Test your goalie by placing multiple balls into your goal. How quickly can you catch all three?

# SHOW OFF YOUR BUILD



Share your funniest moments & coolest mods!  
**#crunchlabs @crunchlabs**    



**WARNING:** Improper assembly can short circuit batteries.

### BATTERY SAFETY

Remove exhausted batteries. Do not mix old & new batteries. Do not mix alkaline, standard (carbon-zinc), or rechargeable batteries. Do not recharge non-rechargeable batteries. If using rechargeable batteries, remove them from the toy before charging. Rechargeable batteries should be charged under adult supervision. Do not short-circuit supply terminals. Do not connect this toy to a power supply greater than two AA batteries. **How to remove batteries:** 1. Remove screw and lid from battery pack. 2. Remove batteries. **How to insert batteries:** 1. Remove screw and lid from battery pack. 2. Insert two new batteries into the battery pack with correct polarity (+ and -). 3. Replace lid and secure the screw on the battery pack.

### SWEEPSTAKES

**Each CrunchLabs build box contains the chance to WIN a trip to visit CrunchLabs with Mark Rober! Sadly, you are not a prize winner this time. Check inside your next build box for another chance to win.**

*Trip includes roundtrip transportation and two (2) night's hotel accommodations for a family of four (4). Approximate value: \$4,500. NO PURCHASE NECESSARY. Open to legal U.S. residents, 18 years of age or older. Void where prohibited. For complete Official Rules, including promotion end date and information on how to obtain a free game ticket, visit [www.crunchlabs.com/win](http://www.crunchlabs.com/win).*

This toy is intended for use by children over the age of eight years. These instructions contain important information, do not throw away.