

# 45 TON

## WHL45TC125



With a 45-ton lifting capacity, combined with 125' reach and a sub-frame suitable for fifth wheel installation, the Hydra-Lift WHL45TC125 Swing Cab Cranes offer heavy lifting and versatility.

Out and down outriggers with independently operated horizontal extension cylinders and vertical jack cylinders, give the operator true stability on uneven surfaces or in tight locations. The fully equipped cab provides the operator with a comfortable working environment in all weather conditions. Mounted on a tandem steer tri-drive rear axle chassis with fifth wheel, or single steer tri-drive rear axle chassis, or tandem steer tandem drive rear axle chassis without fifth wheel, WHL45TC125 Cranes are truly capable of heavy lifting and heavy hauling.



### FEATURES & BENEFITS

- 45-ton lifting capacity (80,000 lbs at 10' radius)
- 135' tip height (fully extended)
- 4 section 125' fully proportional boom
- 38.6' retracted length
- Continuous 360° rotation
- Tapered rear subframe for fifth wheel installation
- Out and down outriggers
- Dual fan oil cooler
- Hydraulic tank heater
- Pre-wired boom and cab for LED work lights
- New cab design with electric controls
- Designed and tested to CSA Z-150 standards
- 15,000 lb, 2 speed grooved drum planetary winch with integral brake for high efficiency and security, includes cable packer
- High strength box construction, welded booms for maximum strength to weight ratio
- A2B and LMI system with digital radio weight indicator
- Remote Monitoring Video System: two cameras and one in-cab colour display (view right rear outriggers and winches)
- 40-ton four-sheave crane block (Easy Reeve)

### OPTIONAL EQUIPMENT

- Boom lights
- Air conditioning

Continued on next page »

# LOAD CHARTS AND SPECIFICATIONS

## WHL45TC125 TRACTOR LOAD CHART Outriggers at Full Spread (240° over the back)

MAIN BOOM MAXIMUM RATED LOAD IN LBS.																	
LOADED OPERATING RADIUS	LOADED BOOM ANGLE	RETRACTED BOOM LENGTH	LOADED BOOM ANGLE	BOOM LENGTH	LOADED BOOM ANGLE	BOOM LENGTH	LOADED BOOM ANGLE	BOOM LENGTH	LOADED BOOM ANGLE	BOOM LENGTH	LOADED BOOM ANGLE	EXTENDED BOOM LENGTH	LOADED BOOM ANGLE	EXTENDED BOOM LENGTH	LOADED BOOM ANGLE	EXTENDED BOOM LENGTH	
FEET	°	38.6'	°	45'	°	60'	°	75'	°	90'	°	105'	°	120'	°	125'	
10	69	80,000	72	53,000													
12	66	71,000	69	53,000	75	42,000											
15	61	60,000	65	52,000	72	39,700	75	32,000									
20	52	45,000	58	43,400	67	36,700	71	29,000	75	25,000							
25	41	38,000	50	35,900	61	34,100	67	27,000	71	23,800	74	20,000	76	16,600			
30	28	27,000	41	28,500	56	29,600	63	25,500	68	22,300	71	18,500	74	15,200	74	12,600	
35			30	23,700	50	26,000	59	23,300	65	20,300	68	16,000	71	13,500	72	12,600	
40			11	19,600	43	22,400	54	21,500	61	19,400	65	13,500	69	12,200	69	11,400	
45					35	18,300	49	18,600	57	17,200	62	12,000	66	11,000	67	10,500	
50					26	15,300	44	15,500	53	15,500	59	10,600	63	10,000	64	9,800	
55					13	12,900	38	13,200	49	13,400	56	9,400	61	9,400	62	9,000	
60							31	11,000	45	11,500	53	8,300	58	8,500	59	8,200	
65							23	9,700	40	9,900	49	7,700	55	7,800	57	7,500	
70							8	8,400	35	8,600	45	6,900	52	7,100	54	6,700	
75									29	7,500	41	6,200	49	6,400	51	6,000	
80									21	6,500	37	5,600	46	5,800	48	5,400	
85									8	5,700	32	5,100	42	5,300	45	4,800	
90											26	4,600	38	4,800	41	4,400	
95											19	4,200	34	4,400	38	3,900	
100											7	3,800	30	4,000	34	3,500	
105													25	3,000	29	3,000	
110													18	2,500	24	2,500	
115													6	1,700	18	1,700	
120														6	1,200	0	1,000
	0	22,000	0	18,000	0	12,000	0	8,000	0	5,600	0	3,700	0	1,700	0	1,000	

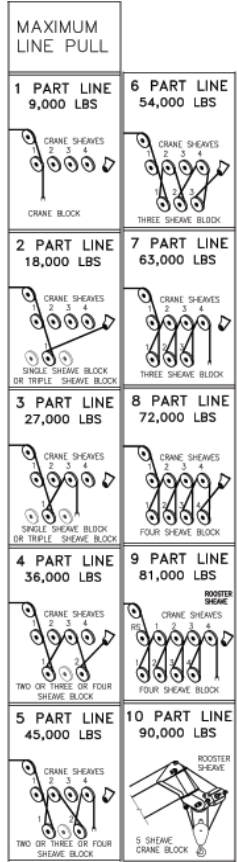
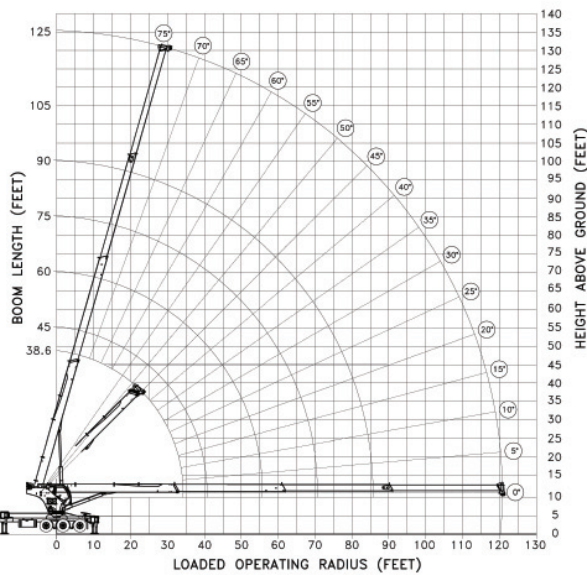
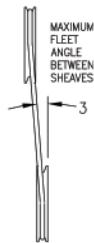
RATINGS ABOVE THE HEAVY LINE ARE BASED ON STRUCTURAL COMPETENCE AND NOT ON MACHINE STABILITY.

### WARNING

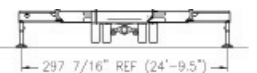
- Actual load radius governs all loads and must be measured manually
- Do not allow boom deflection to increase the load radius
- Anti-two-block system must be in good working condition before operating the crane
- Keep a minimum of five wraps of load on the winch drum
- Do not exceed 10 parts of line

### IMPORTANT

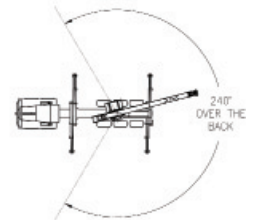
- Deductions must be made from rated loads for lifting accessories: Jib, Overhaul Ball, Load Hook, Snatch Block, Load Block, etc.
- Maximum outrigger pad load is less than 84,500 lbs.
- De-rate chart 2% of the rated load for every degree below -14°F
- At -40°F and below, the chart should be reduced to 50% of the rated load. Crane movement must be slow and shock loading avoided
- The crane should not be used at -58°F or colder



- Lift line ratings are based on 5/8" 18x19 rotation resistant wire rope with a minimum breaking strength of 45,400lb (SF>5)
- Sheaves numbered from left to right when viewed facing the crane



LOAD CHART WORKING AREA



FOR ALL OTHER LOADING CONFIGURATIONS, REFER TO LOAD CHART BOOKLET



12155 - 154 Street  
Edmonton, AB Canada T5V 1J3  
Toll Free: 1 800 661 0378 | Fax: 780 455 6770

www.weldco-hydralift.com

702-20-2709 (REV B)

Last revised October 19, 2018