

45 TON WHL45TC100



With a 45-ton lifting capacity, long reach and a sub-frame suitable for fifth wheel installation, the Hydra-Lift WHL45TC100 Swing Cab Cranes offer heavy lifting and versatility.

Out and down outriggers with independently operated horizontal extension cylinders and vertical jack cylinders, give the operator true stability on uneven surfaces or in tight locations. The fully equipped cab provides the operator with a comfortable working environment in all weather conditions. Mounted on a tandem steer tri-drive rear axle chassis with fifth wheel, or single steer tri-drive rear axle chassis, or tandem steer tandem rear axle chassis without fifth wheel, WHL45TC100 Cranes are truly capable of heavy lifting and heavy hauling.

FEATURES

- 45-ton lifting capacity (80,000lbs at 10' radius)
- 110' tip height (fully extended)
- 4 section 100' fully proportional boom
- 30.5' retracted length
- Continuous rotation
- Tapered rear subframe for fifth wheel installation
- Out and down outriggers
- Dual fan oil cooler
- 15,000 lb, 2 speed grooved drum planetary winch with integral brake for high efficiency and security, includes cable packer
- High strength box construction, welded booms for maximum strength to weight ratio
- A2B and LMI system with digital radio weight indicator
- Pre-wired boom and cab for work lights
- Remote Monitoring Video System: two cameras and one in-cab colour display (view right rear outriggers and winches)
- 40-ton four-sheave crane block (Easy Reeve)

OPTIONAL

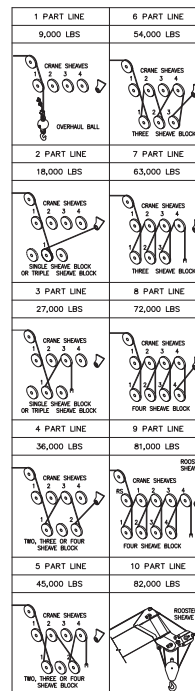
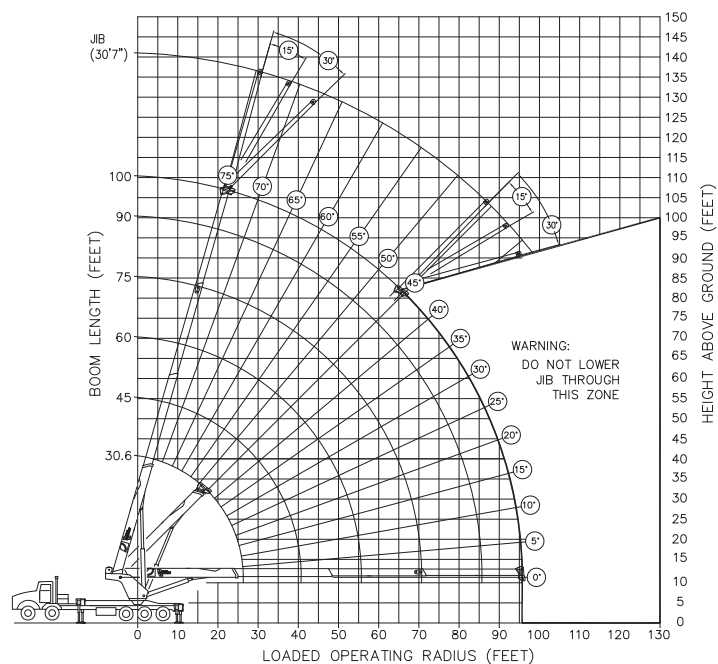
- 31' Orientable (0°, 15°, 30°) swing around jib, stows on side of boom
- 31' - 51' Orientable (0°, 15°, 30°) two-stage swing around jib, stows on side of boom
- Hydraulic tank heater
- Boom lights
- Auxillary winch options, 12,000 lb or 15,000 lb winch
- Two person self levelling man basket
- Air conditioning
- Remote radio crane controls

LOAD CHARTS AND SPECIFICATIONS

MAXIMUM RATED LOAD IN LBS. WITH OUTRIGGERS FULLY EXTENDED																				
LOADED OPERATING RADIUS	LOADED BOOM ANGLE	RETRACTED BOOM LENGTH	LOADED BOOM ANGLE	BOOM LENGTH	LOADED BOOM ANGLE	BOOM LENGTH	LOADED BOOM ANGLE	BOOM LENGTH	LOADED BOOM ANGLE	BOOM LENGTH	LOADED BOOM ANGLE	BOOM LENGTH	LOADED OPERATING RADIUS	30'7" ORIENTABLE JIB						
														0°		15°		30°		
														BOOM ANGLE	LOAD	BOOM ANGLE	LOAD	BOOM ANGLE	LOAD	
FEET	°	30.6'	°	45'	°	60'	°	75'	°	90'	°	100'	FEET	°	LB	°	LB	°	LB	
10	63	80,000	72	51,000									10							
12	58	70,000	69	51,000									12							
15	51	56,000	65	51,000	72	40,000							15							
20	37	42,000	58	42,500	67	38,000	71	27,500					20							
25	17	30,000	50	35,100	61	30,500	67	24,500	71	24,300	73	18,000	25							
30			41	29,300	56	27,100	63	21,500	68	21,300	70	17,500	30							
35			30	24,500	50	24,200	59	19,100	65	19,100	67	15,900	35							
40			11	20,700	43	21,200	54	17,000	61	17,000	64	14,100	40	70	8,500					
45					35	17,500	43	15,250	57	15,250	61	12,500	45	68	8,250	71	6,800	74	5,900	
50					26	14,500	44	13,800	53	13,800	57	11,300	50	65	7,200	69	6,300	72	5,500	
55					13	12,300	38	12,400	49	12,600	54	10,300	55	63	6,600	66	5,650	69	5,000	
60							31	10,500	45	10,700	50	9,400	60	61	6,150	64	5,300	67	4,750	
65							23	9,000	40	9,200	46	8,400	65	58	5,500	61	4,800	64	4,400	
70									35	8,000	42	7,900	70	55	5,000	59	4,550	61	4,100	
75									29	6,900	38	6,900	75	53	4,600	56	4,200	58	3,850	
80									21	6,000	33	6,000	80	50	4,100	53	3,900	56	3,650	
85											27	5,200	85	47	3,700	50	3,650	53	3,450	
90											20	4,600	90			47	3,400	49	3,200	
95													95					46	3,050	
		975lbs		675lbs		500lbs		425lbs		375lbs		325lbs								Deductions for Stowed Jib

RATINGS ABOVE THE HEAVY LINE ARE BASED ON STRUCTURAL COMPETENCE AND NOT ON MACHINE STABILITY.

- NOTE:**
1. Deductions must be made from rated loads for lifting accessories: fixed jibs, telescopic jibs, overhaul balls, load hooks, snatch blocks and load blocks
 2. Lift line ratings are based on 5/8" 18 x 19 rotation resistant wire rope with a minimum breaking strength of 45400 lbs (sf>5).
 3. Sheaves numbered from left to right when viewed facing the crane



12155 - 154 Street
Edmonton, AB Canada T5V 1J3
Toll Free: 1 800 661 0378 | Fax: 780 455 6770

www.weldco-hydralift.com

