

IMPERIAL

Ferrari
PASSION FOR LIFTING

**TRUCK
Mounted
CRANES**

**7200-651000 lbft
Families**

Ferrari
PASSION FOR LIFTING



Series

300

Compact telescopic

Page 6 to page 13

500

Small articulated

Page 14 to page 25

7000

New Age articulated

Page 26 to page 75

700

***Articulated with
double linkage***

Page 76 to page 89

8

Basic articulated NO CE

Page 90 to page 107

9000C

***New Age Endless slewing
with double linkage***

Page 108 to page 117

900

***Endless slewing
with double linkage***

Page 118 to page 123

7000D

New Age Telescopic boom

Page 124 to page 129

SKY

Self-Aligning basket

Page 130 to page 133

Features & Accessories

Ferrari

PASSION FOR LIFTING

tm

1

3

6

9

300

From 7200 to
25300 lbft class

Compact
telescopic

500

From 21700 to
57900 lbft class

Small
articulated

7000

From 65100 to
188100 lbft class

New Age
articulated

700

From 209800 to
354400 lbft class

Articulated
with double linkage

8

From 72300 to
188100 lbft class

Basic
articulated NO CE

9000 C

From 166400 to
477400 lbft class

New Age
endless slewing
with double linkage

900

From 578600 to
651000 lbft class

Endless slewing
with double linkage

7000 D

From 65100 to
173600 lbft class

New Age
Telescopic boom

SKY

From 36200 to
50600 lbft class

Telescopic boom
Self-Aligning basket

Thousand reasons to choose F.lli Ferrari

18

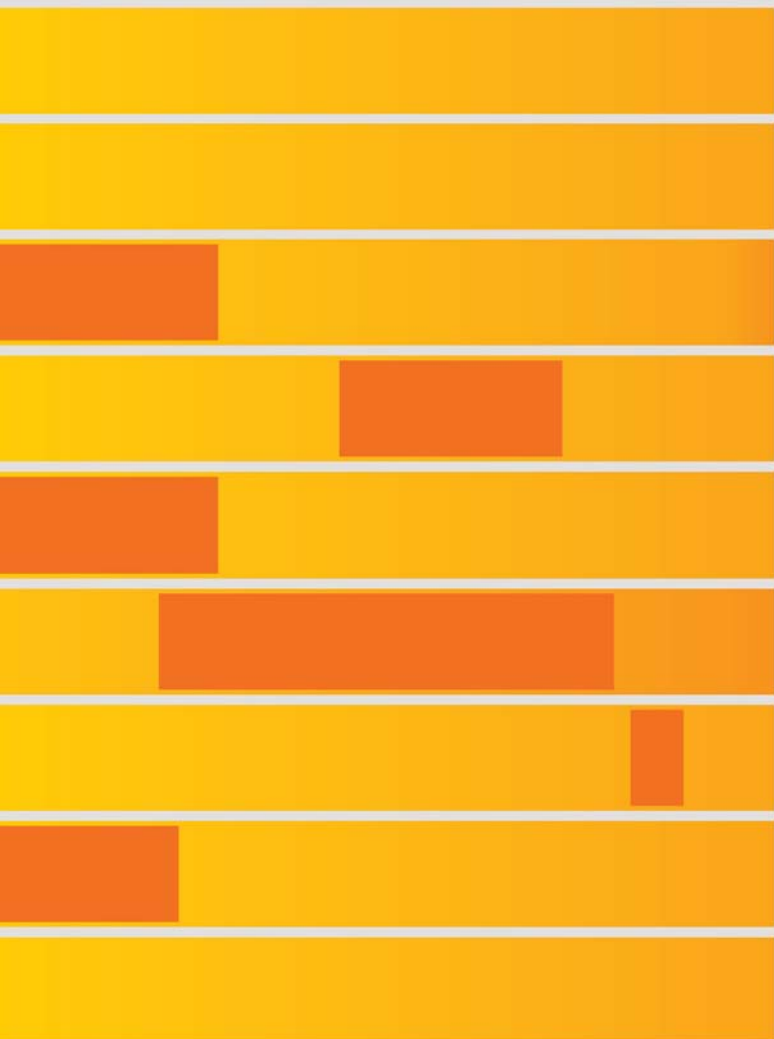
26

29

35

50

90





300 Series

Compact telescopic

310

314

315

317

321

322

326

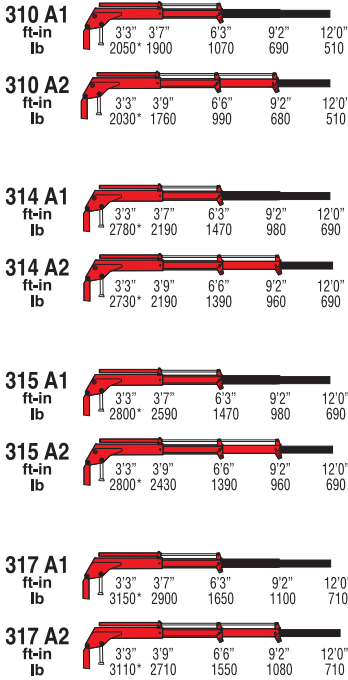
329

330

350



300

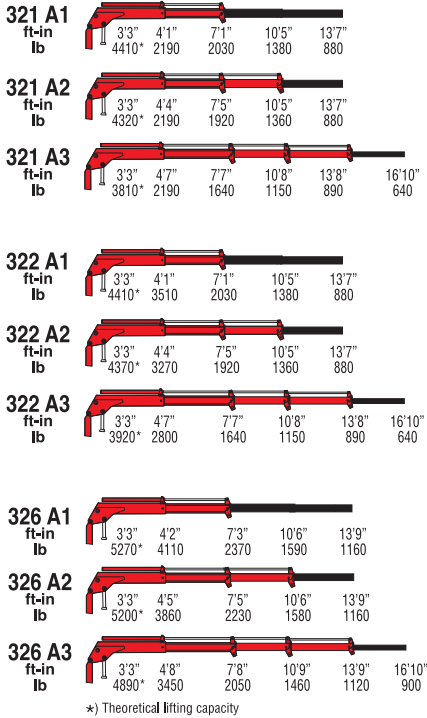


*) Theoretical lifting capacity

MODELS	LIFTING MOMENT lb-ft	SLEWING ANGLE °	WORKING PRESSURE psi	OIL TANK CAPACITY Gal	MAX OIL FLOW gpm	MAX. VERTICAL REACH (HYDR.) ft. in.	CRANE WEIGHT lb	DIMENSIONS in WxHxD
310 A1	6700	328	2610	4,62	1,32	9' 11"	320	24 x49x15
310 A2	-	328	2610	4,62	1,32	12' 8"	390	26x49x15
314 A1	9200	335	2320	4,62	2,11	9' 9"	385	25x49x17
314 A2	-	335	2320	4,62	2,11	12' 6"	425	27x49x17
315 A1	9200	335	2320	4,62	2,11	9' 9"	385	25x49x17
315 A2	-	335	2320	4,62	2,11	12' 6"	440	27x49x17
317 A1	10300	335	2460	4,62	1,59	9' 9"	385	25x49x17
317 A2	-	335	2460	4,62	1,59	12' 6"	440	27x49x17



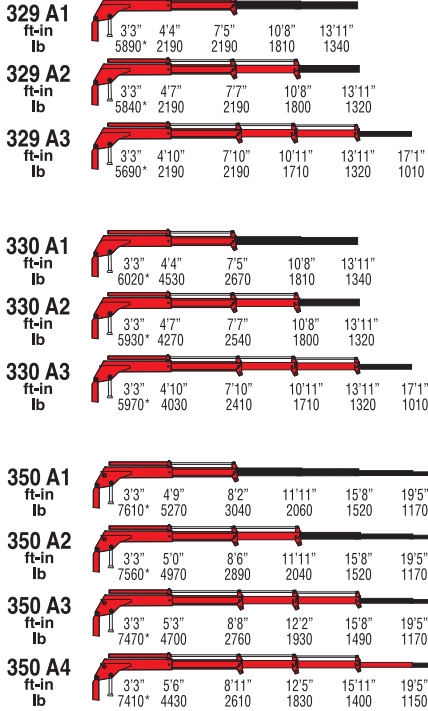
300



MODELS	LIFTING MOMENT	SLEWING ANGLE	WORKING PRESSURE	OIL TANK CAPACITY	MAX OIL FLOW	MAX. VERTICAL REACH (HYDR.)	CRANE WEIGHT	DIMENSIONS
	lb-ft							
321 A1	14500	335	2320	4,62	2,11	11' 8"	475	28x60x17
321 A2	-	335	2320	4,62	2,11	14' 10"	530	28x60x17
321 A3	-	335	2170	4,62	2,11	17' 11"	580	35x60x17
322 A1	14500	335	2320	4,62	2,11	11' 8"	480	28x60x17
322 A2	-	335	2320	4,62	2,11	14' 10"	540	28x60x17
322 A3	-	335	2170	4,62	2,11	17' 11"	585	35x60x17
326 A1	17300	335	2460	4,62	2,11	11' 9"	480	36x60x18
326 A2	-	335	2460	4,62	2,11	14' 9"	560	39x60x18
326 A3	-	335	2460	4,62	2,11	17' 8"	605	39x60x18



300



*) Theoretical lifting capacity

MODELS	LIFTING MOMENT	SLEWING ANGLE	WORKING PRESSURE	OIL TANK CAPACITY	MAX OIL FLOW	MAX. VERTICAL REACH (HYDR.)	CRANE WEIGHT	DIMENSIONS
	lb-ft							
329 A1	19300	335	2320	4,62	2,11	11' 9"	580	29x63x18
329 A2	-	335	2320	4,62	2,11	14' 9"	650	30x63x18
329 A3	-	335	2320	4,62	2,11	17' 8"	710	30x63x18
330 A1	19700	335	2320	4,62	2,64	11' 9"	580	29x63x18
330 A2	-	335	2320	4,62	2,64	14' 9"	660	30x63x18
330 A3	-	335	2320	4,62	2,64	17' 8"	715	30x63x18
350 A1	25000	395	2540	4,62	2,64	12' 11"	675	39x68x20
350 A2	-	395	2540	4,62	2,64	16' 4"	750	41x68x20
350 A3	-	395	2540	4,62	2,64	19' 9"	820	41x68x20
350 A4	-	395	2540	4,62	2,64	23' 1"	880	41x68x20



500 Series

Small articulated

531

538

540

541

550

551

561

571

581

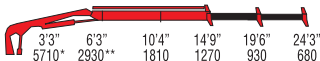


531

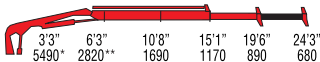
531R



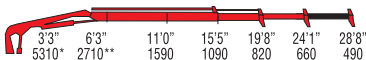
A1
ft-in
lb



A2
ft-in
lb



A3
ft-in
lb



*) Theoretical lifting capacity

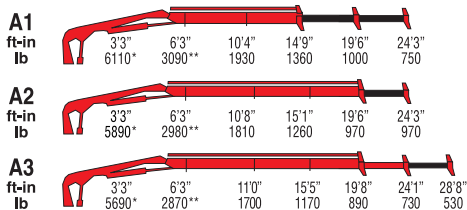
***) Capacity at fixed hook (only if with load limiting device in EC area)

MODELS	LIFTING MOMENT lb-ft	SLEWING ANGLE °	WORKING PRESSURE psi	OIL TANK CAPACITY Gal	MAX OIL FLOW gpm	MAX. VERTICAL REACH (HYDR.) ft. in.	CRANE WEIGHT (STAB. STANDARD) lb	DIMENSIONS in WxHxD
A1	18700	370	2540	6,60	2,11	22' 11"	990	74x63x20
A2	-	370	2540	6,60	2,11	27' 4"	1070	76x63x20
A3	-	370	2540	6,60	2,11	31' 8"	1140	79x63x20



538

538R



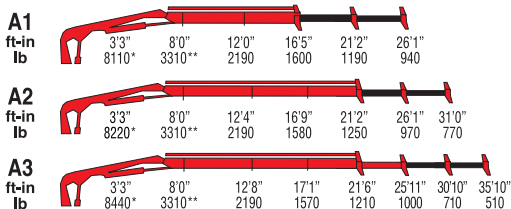
*) Theoretical lifting capacity
 **) Capacity at fixed hook (only if with load limiting device in EC area)

MODELS	LIFTING MOMENT lb-ft	SLEWING ANGLE °	WORKING PRESSURE psi	OIL TANK CAPACITY Gal	MAX OIL FLOW gpm	MAX. VERTICAL REACH (HYDR.) ft. in.	CRANE WEIGHT (STAB. STANDARD) lb	DIMENSIONS in WxHxD
A1	20000	370	2680	6,60	2,11	22' 11"	990	74x63x20
A2	-	370	2680	6,60	2,11	27' 4"	1070	76x63x20
A3	-	370	2680	6,60	2,11	31' 8"	1140	79x63x20



540

540R



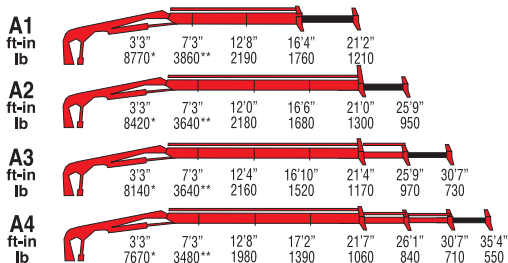
*) Theoretical lifting capacity
 **) Capacity at fixed hook (only if with load limiting device in EC area)

MODELS	LIFTING MOMENT	SLEWING ANGLE	WORKING PRESSURE	OIL TANK CAPACITY	MAX OIL FLOW	MAX. VERTICAL REACH (HYDR.)	CRANE WEIGHT (STAB. STANDARD)	DIMENSIONS
	lb-ft	°	psi	Gal	gpm	ft. in.	lb	
A1	26600	370	3120	7,93	4,23	25' 5"	1310	78x71x20
A2	-	370	3120	7,93	4,23	30' 0"	1400	78x71x20
A3	-	370	3120	7,93	4,23	34' 6"	1490	91x71x25



541

541R



*) Theoretical lifting capacity

***) Capacity at fixed hook (only if with load limiting device in EC area)

MODELS	LIFTING MOMENT	SLEWING ANGLE	WORKING PRESSURE	OIL TANK CAPACITY	MAX OIL FLOW	MAX. VERTICAL REACH (HYDR.)	CRANE WEIGHT (STAB. STANDARD)	DIMENSIONS
	lb-ft	°	psi	Gal	gpm	ft. in.	lb	in WxHxD
A1	28800	370	3480	9,25	3,96	25' 8"	1410	83x69x22
A2	-	370	3480	9,25	3,96	30' 5"	1520	83x69x22
A3	-	370	3480	9,25	3,96	34' 11"	1630	83x69x22
A4	-	370	3480	9,25	3,96	39' 7"	1730	83x69x22

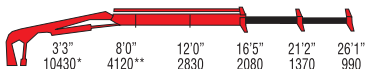


550

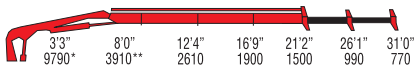
550R



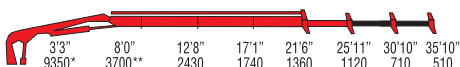
A1
ft-in
lb



A2
ft-in
lb



A3
ft-in
lb



*) Theoretical lifting capacity

MODELS	LIFTING MOMENT	SLEWING ANGLE	WORKING PRESSURE	OIL TANK CAPACITY	MAX OIL FLOW	MAX. VERTICAL REACH (HYDR.)	CRANE WEIGHT (STAB. STANDARD)	DIMENSIONS
	lb-ft	°	psi	Gal	gpm	ft. in.	lb	
A1	34200	370	3620	7,93	4,23	25' 5"	1310	78x71x20
A2	-	370	3620	7,93	4,23	30' 0"	1400	78x71x20
A3	-	370	3620	7,93	4,23	34' 6"	1490	91x71x25



551

551R



Model	3'3"	7'3"	11'6"	16'0"	20'9"	25'7"	30'4"	35'2"
A1 ft-in lb	10670*	4850**	2910	2090	1480			
A2 ft-in lb	9810*	4250**	2710	1940	1520	1100		
A3 ft-in lb	9410*	4120**	2540	1790	1370	1120	860	
A4 ft-in lb	8910*	3970**	2340	1630	1260	990	840	660

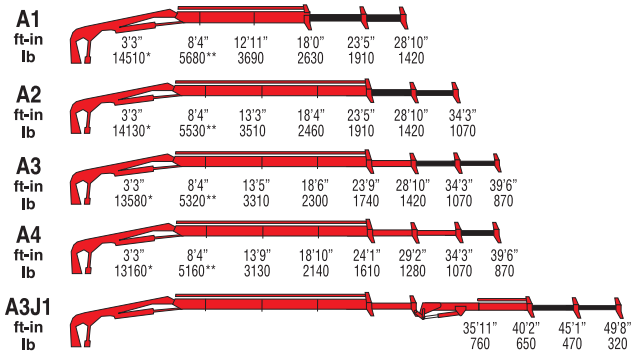
*) Theoretical lifting capacity

MODELS	LIFTING MOMENT lb-ft	SLEWING ANGLE °	WORKING PRESSURE psi	OIL TANK CAPACITY Gal	MAX OIL FLOW gpm	MAX. VERTICAL REACH (HYDR.) ft. in.	CRANE WEIGHT (STAB. STANDARD) lb	DIMENSIONS in WxHxD
A1	35000	370	3840	9,25	3,96	25' 8"	1410	83x69x22
A2	-	370	3840	9,25	3,96	30' 3"	1520	83x69x22
A3	-	370	3840	9,25	3,96	34' 11"	1630	83x69x22
A4	-	370	3840	9,25	3,96	39' 7"	1730	83x69x22



561

561R



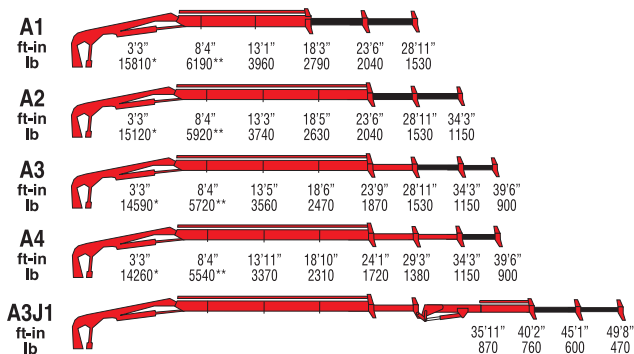
*) Theoretical lifting capacity

MODELS	LIFTING MOMENT lb-ft	SLEWING ANGLE °	WORKING PRESSURE psi	OIL TANK CAPACITY Gal	MAX OIL FLOW gpm	MAX. VERTICAL REACH (HYDR.) ft. in.	CRANE WEIGHT (STAB. STANDARD) lb	DIMENSIONS in WxHxD
A1	47600	387	3550	9,25	5,28	27' 4"	1940	91x78x25
A2	-	387	3550	9,25	5,28	32' 2"	2090	91x78x25
A3	-	387	3550	9,25	5,28	37' 2"	2230	91x78x25
A4	-	387	3550	9,25	5,28	42' 4"	2340	91x78x25
A3J1	-	387	3550	9,25	5,28	48' 2"	2620	91x78x29



571

571R



*) Theoretical lifting capacity

MODELS	LIFTING MOMENT	SLEWING ANGLE	WORKING PRESSURE	OIL TANK CAPACITY	MAX OIL FLOW	MAX. VERTICAL REACH (HYDR.)	CRANE WEIGHT (STAB. STANDARD)	DIMENSIONS in WxHxD
	lb-ft	°	psi	Gal	gpm	ft. in.	lb	
A1	51900	387	3840	9,25	5,28	27' 11"	1940	91x79x24
A2	-	387	3840	9,25	5,28	33' 6"	2120	91x79x24
A3	-	387	3840	9,25	5,28	38' 5"	2250	91x79x24
A4	-	387	3840	9,25	5,28	43' 8"	2380	91x79x24
A3J1	-	387	3840	9,25	5,28	49' 10"	2650	91x79x29

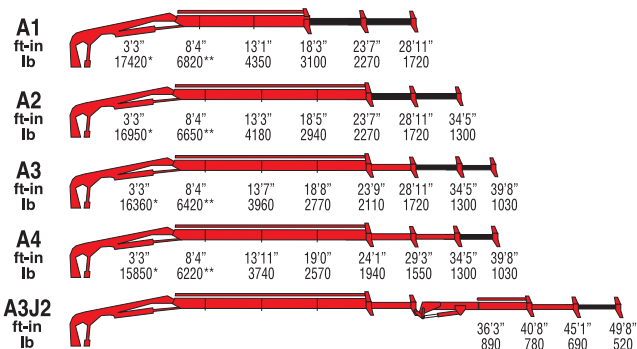


581

581R



RADIOCONTROL



*) Theoretical lifting capacity

MODELS	LIFTING MOMENT lb-ft	SLEWING ANGLE °	WORKING PRESSURE psi	OIL TANK CAPACITY Gal	MAX OIL FLOW gpm	MAX. VERTICAL REACH (HYDR.) ft. in.	CRANE WEIGHT (STAB. STANDARD) lb	DIMENSIONS in WxHxD
A1	57100	387	4130	9,25	5,28	27' 11"	2010	91x79x24
A2	-	387	4130	9,25	5,28	33' 6"	2180	91x79x24
A3	-	387	4130	9,25	5,28	38' 5"	2310	91x79x24
A4	-	387	4130	9,25	5,28	43' 8"	2450	91x79x24
A3J2	-	387	4130	9,25	5,28	54' 6"	2780	91x79x29





NEW AGE

7000 Series

Articulated

7090B

7091C

70915C

7095C

7103C

7111C

71115C

7112B

7121C

7125C

7130B

7131C

71315C

7143C

7153C

7160B

7161C

71615C

7173C

7183C

7210B

7213C

72135C

7223C

7231C

7240B

7243C

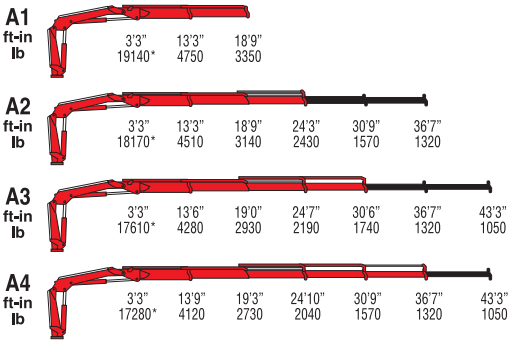
72435C

7245C

7261C



7090B


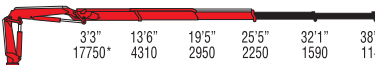
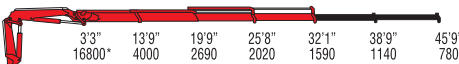
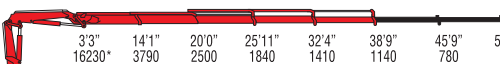
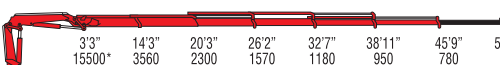


*) Theoretical lifting capacity


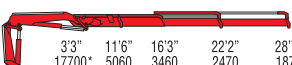
MODELS	LIFTING MOMENT	SLEWING ANGLE	WORKING PRESSURE	OIL TANK CAPACITY	MAX OIL FLOW	MAX. VERTICAL REACH (HYDR.)	CRANE WEIGHT (STAB. STANDARD)	DIMENSIONS in WxHxD
	lb-ft	°	psi	Gal	gpm	ft. in.	lb	
A1	62900	425	4490	19,81	10,57	29' 10"	2515	91x82x34
A2	-	425	4490	19,81	10,57	35' 1"	2690	91x82x34
A3	-	425	4490	19,81	10,57	41' 4"	2865	91x82x34
A4	-	425	4490	19,81	10,57	47' 3"	3020	91x82x34



7091C

A1 ft-in lb		3'3" 18430*	13'6" 4450	19'5" 3110					
A2 ft-in lb		3'3" 17750*	13'6" 4310	19'5" 2950	25'5" 2250	32'1" 1590	38'9" 1140		
A3 ft-in lb		3'3" 16800*	13'9" 4000	19'9" 2690	25'8" 2020	32'1" 1590	38'9" 1140	45'9" 780	
A4 ft-in lb		3'3" 16230*	14'1" 3790	20'0" 2500	25'11" 1840	32'4" 1410	38'9" 1140	45'9" 780	52'11" 620
A5 ft-in lb		3'3" 15500*	14'3" 3560	20'3" 2300	26'2" 1570	32'7" 1180	38'11" 950	45'9" 780	52'11" 620

Short boom

SCA2 ft-in lb		3'3" 18360*	11'3" 5340	15'11" 3780	21'11" 2680			
SCA3 ft-in lb		3'3" 17700*	11'6" 5060	16'3" 3460	22'2" 2470	28'7" 1870		

7091SC

*) Theoretical lifting capacity

MODELS	LIFTING MOMENT	SLEWING ANGLE	WORKING PRESSURE	OIL TANK CAPACITY	MAX OIL FLOW	MAX. VERTICAL REACH (HYDR.)	CRANE WEIGHT (STAB. STANDARD)	DIMENSIONS
	lb-ft	°	psi	Gal	gpm	ft. in.	lb	
A1	60000	425	4570	19,81	10,57	30' 6"	2680	91x83x34
A2	-	425	4570	19,81	10,57	35' 9"	2875	91x83x34
A3	-	425	4570	19,81	10,57	43' 0"	3075	91x83x34
A4	-	425	4570	19,81	10,57	49' 6"	3265	91x83x34
A5	-	425	4570	19,81	10,57	56' 9"	3430	91x83x35
SC A2	60000	425	4640	19,81	10,57	33' 2"	2820	90x83x34
SC A3	-	425	4640	19,81	10,57	40' 0"	3020	90x83x34



7095C

A1		3'3"	13'6"	19'5"					
ft-in									
lb		19620*	4740	3310					
A2		3'3"	13'6"	19'5"	25'5"	32'1"	38'9"		
ft-in									
lb		18850*	4570	3140	2390	1690	1250		
A3		3'3"	13'9"	19'9"	25'8"	32'1"	38'9"	45'9"	
ft-in									
lb		18340*	4370	2930	2190	1730	1280	880	
A4		3'3"	14'1"	20'0"	25'11"	32'4"	38'9"	45'9"	52'11"
ft-in									
lb		17640*	4120	2710	1980	1520	1230	880	740
A5		3'3"	14'3"	20'3"	26'2"	32'7"	38'11"	45'9"	52'11"
ft-in									
lb		16450*	3780	2440	1740	1310	1050	870	680

*) Theoretical lifting capacity

MODELS	LIFTING MOMENT	SLEWING ANGLE	WORKING PRESSURE	OIL TANK CAPACITY	MAX OIL FLOW	MAX. VERTICAL REACH (HYDR.)	CRANE WEIGHT (STAB. STANDARD)	DIMENSIONS
	lb-ft	°	psi	Gal	gpm	ft. in.	lb	
A1	64400	425	4860	19,81	10,57	30' 6"	2680	91x83x34
A2	-	425	4860	19,81	10,57	35' 9"	2875	91x83x34
A3	-	425	4860	19,81	10,57	43' 0"	3075	91x83x34
A4	-	425	4780	19,81	10,57	49' 6"	3265	91x83x34
A5	-	425	4780	19,81	10,57	56' 9"	3430	91x83x35






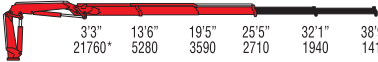
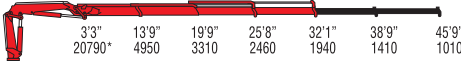

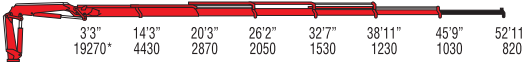
A1		3'3"	13'6"	19'5"					
ft-in									
lb		20920*	5040	3530					
A2		3'3"	13'6"	19'5"	25'5"	32'1"	38'9"		
ft-in									
lb		20130*	4880	3370	2570	1810	1330		
A3		3'3"	13'9"	19'9"	25'8"	32'1"	38'9"	45'9"	
ft-in									
lb		19030*	4530	3050	2280	1800	1340	950	
A4		3'3"	14'1"	20'0"	25'11"	32'4"	38'9"	45'9"	52'11"
ft-in									
lb		17970*	4200	2770	2020	1550	1280	940	780
A5		3'3"	14'3"	20'3"	26'2"	32'7"	38'11"	45'9"	52'11"
ft-in									
lb		17110*	3940	2550	1830	1380	1100	910	730

*.) Theoretical lifting capacity



MODELS	LIFTING MOMENT	SLEWING ANGLE	WORKING PRESSURE	OIL TANK CAPACITY	MAX OIL FLOW	MAX. VERTICAL REACH (HYDR.)	CRANE WEIGHT (STAB. STANDARD)	DIMENSIONS
	lb-ft		psi					
A1	68700	425	5070	19,81	10,57	30' 6"	2680	91x83x34
A2	-	425	5070	19,81	10,57	35' 9"	2875	91x83x34
A3	-	425	5030	19,81	10,57	43' 0"	3075	91x83x34
A4	-	425	4930	19,81	10,57	49' 6"	3265	91x83x34
A5	-	425	4860	19,81	10,57	56' 9"	3430	91x83x35



7111C

A1		3'3"	13'6"	19'5"					
ft-in									
lb		22490*	5460	3780					
A2		3'3"	13'6"	19'5"	25'5"	32'1"	38'9"		
ft-in									
lb		21760*	5280	3590	2710	1940	1410		
A3		3'3"	13'9"	19'9"	25'8"	32'1"	38'9"	45'9"	
ft-in									
lb		20790*	4950	3310	2460	1940	1410	1010	
A4		3'3"	14'1"	20'0"	25'11"	32'4"	38'9"	45'9"	52'11"
ft-in									
lb		19910*	4650	3050	2230	1720	1410	1010	820
A5		3'3"	14'3"	20'3"	26'2"	32'7"	38'11"	45'9"	52'11"
ft-in									
lb		19270*	4430	2870	2050	1530	1230	1030	820

Short boom

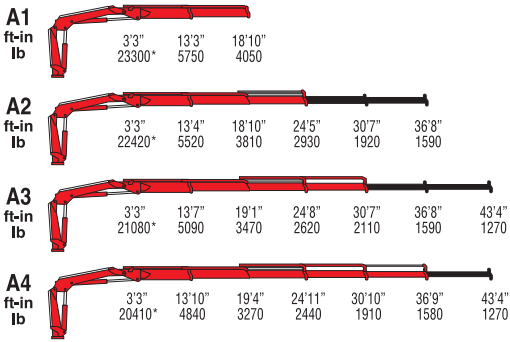
SCA2		3'3"	11'8"	16'4"	22'4"			
ft-in								
lb		21140*	5950	4170	3040			
SCA3		3'3"	11'11"	16'7"	22'6"	28'11"		
ft-in								
lb		20440*	5640	3910	2800	2160		

7111SC

*) Theoretical lifting capacity

MODELS	LIFTING MOMENT	SLEWING ANGLE	WORKING PRESSURE	OIL TANK CAPACITY	MAX OIL FLOW	MAX. VERTICAL REACH (HYDR.)	CRANE WEIGHT (STAB. STANDARD)	DIMENSIONS in WxHxD
	lb-ft	°	psi	Gal	gpm	ft. in.	lb	
A1	73800	425	4570	19,81	10,57	31' 2"	2900	90x84x34
A2	-	425	4640	19,81	10,57	37' 1"	3140	90x84x34
A3	-	425	4640	19,81	10,57	43' 8"	3375	90x84x34
A4	-	425	4640	19,81	10,57	50' 6"	3585	90x84x34
A5	-	425	4640	19,81	10,57	57' 5"	3780	90x84x35
SC A2	68700	425	4490	19,81	10,57	33' 10"	3065	90x84x34
SC A3	-	425	4490	19,81	10,57	40' 8"	3305	90x84x34


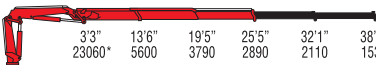
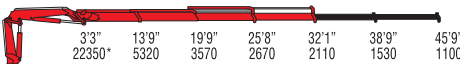
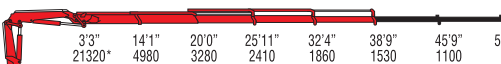
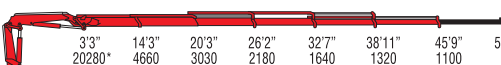




*) Theoretical lifting capacity

MODELS	LIFTING MOMENT	SLEWING ANGLE	WORKING PRESSURE	OIL TANK CAPACITY	MAX OIL FLOW	MAX. VERTICAL REACH (HYDR.)	CRANE WEIGHT (STAB. STANDARD)	DIMENSIONS
	lb-ft	°	psi	Gal	gpm	ft. in.	lb	in WxHxD
A1	75900	425	4490	19,81	10,57	30' 2"	2735	91x83x34
A2	-	425	4490	19,81	10,57	35' 5"	2955	91x83x34
A3	-	425	4490	19,81	10,57	41' 4"	3155	91x83x34
A4	-	425	4490	19,81	10,57	47' 3"	3350	91x83x34



A1 ft-in lb		3'3" 23790*	13'6" 5780	19'5" 4000				
A2 ft-in lb		3'3" 23060*	13'6" 5600	19'5" 3790	25'5" 2890	32'1" 2110	38'9" 1530	
A3 ft-in lb		3'3" 22350*	13'9" 5320	19'9" 3570	25'8" 2670	32'1" 2110	38'9" 1530	45'9" 1100
A4 ft-in lb		3'3" 21320*	14'1" 4980	20'0" 3280	25'11" 2410	32'4" 1860	38'9" 1530	45'9" 1100 52'11" 890
A5 ft-in lb		3'3" 20280*	14'3" 4660	20'3" 3030	26'2" 2180	32'7" 1640	38'11" 1320	45'9" 1100 52'11" 890

*) Theoretical lifting capacity

MODELS	LIFTING MOMENT	SLEWING ANGLE	WORKING PRESSURE	OIL TANK CAPACITY	MAX OIL FLOW	MAX. VERTICAL REACH (HYDR.)	CRANE WEIGHT (STAB. STANDARD)	DIMENSIONS
	lb-ft	°	psi	Gal	gpm	ft. in.	lb	in WxHxD
A1	78100	425	4860	19,81	10,57	31' 2"	2900	90x84x34
A2	-	425	4930	19,81	10,57	37' 1"	3140	90x84x34
A3	-	425	4930	19,81	10,57	43' 8"	3375	90x84x34
A4	-	425	4860	19,81	10,57	50' 6"	3585	90x84x34
A5	-	425	4860	19,81	10,57	57' 5"	3780	90x84x35

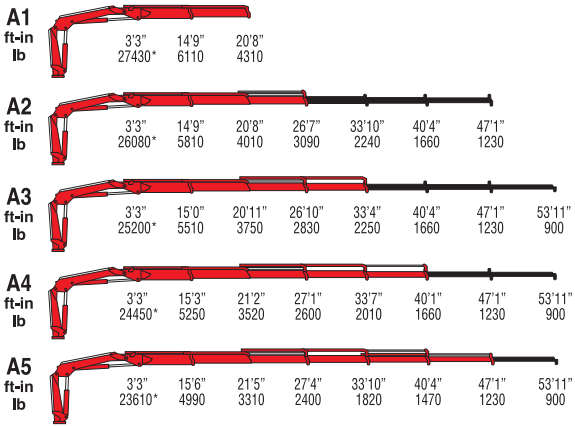




*) Theoretical lifting capacity

MODELS	LIFTING MOMENT lb-ft	SLEWING ANGLE °	WORKING PRESSURE psi	OIL TANK CAPACITY Gal	MAX OIL FLOW gpm	MAX. VERTICAL REACH (HYDR.) ft. in.	CRANE WEIGHT (STAB. STANDARD) lb	DIMENSIONS in WxHxD
A1	83200	425	5070	19,81	10,57	31' 2"	2900	90x84x34
A2	-	425	5150	19,81	10,57	37' 1"	3140	90x84x34
A3	-	425	5070	19,81	10,57	43' 8"	3375	90x84x34
A4	-	425	5000	19,81	10,57	50' 6"	3585	90x84x34
A5	-	425	5000	19,81	10,57	57' 5"	3780	90x84x35

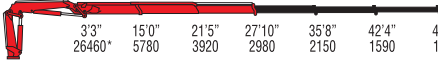
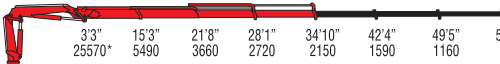
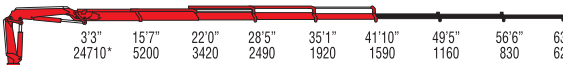
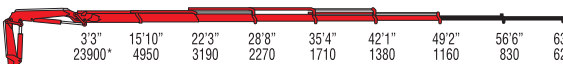
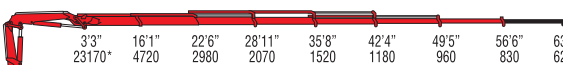







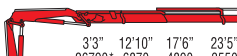
*) Theoretical lifting capacity

MODELS	LIFTING MOMENT	SLEWING ANGLE	WORKING PRESSURE	OIL TANK CAPACITY	MAX OIL FLOW	MAX. VERTICAL REACH (HYDR.)	CRANE WEIGHT (STAB. STANDARD)	DIMENSIONS
	lb-ft	°	psi	Gal	gpm	ft. in.	lb	in WxHxD
A1	89700	425	4130	34,34	7,93	32' 6"	3410	98x91x33
A2	-	425	4130	34,34	7,93	38' 5"	3670	98x91x33
A3	-	425	4130	34,34	7,93	44' 11"	3920	98x91x33
A4	-	425	4130	34,34	7,93	51' 6"	4120	98x91x33
A5	-	425	4130	34,34	7,93	58' 5"	4310	98x91x36



A2 ft-in lb		3'3" 26460*	15'0" 5780	21'5" 3920	27'10" 2980	35'8" 2150	42'4" 1590	49'5" 1160	
A3 ft-in lb		3'3" 25570*	15'3" 5490	21'8" 3660	28'1" 2720	34'10" 2150	42'4" 1590	49'5" 1160	56'6" 830
A4 ft-in lb		3'3" 24710*	15'7" 5200	22'0" 3420	28'5" 2490	35'1" 1920	41'10" 1590	49'5" 1160	56'6" 830 63'4" 620
A5 ft-in lb		3'3" 23900*	15'10" 4950	22'3" 3190	28'8" 2270	35'4" 1710	42'1" 1380	49'2" 1160	56'6" 830 63'4" 620
A6 ft-in lb		3'3" 23170*	16'1" 4720	22'6" 2980	28'11" 2070	35'8" 1520	42'4" 1180	49'5" 960	56'6" 830 63'4" 620
A3J2 ft-in lb							43'8" 950	48'3" 840	53'1" 750 58'3" 570
A4J2 ft-in lb								50'8" 550	55'1" 490 60'0" 440 65'1" 290

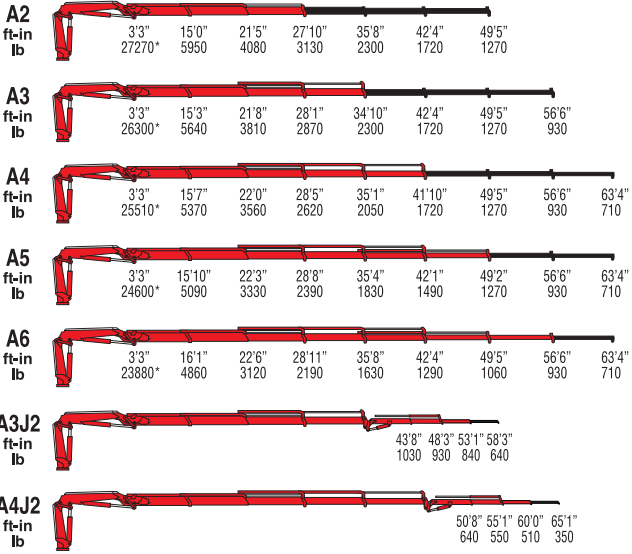
Short boom

A2 SC ft-in lb		3'3" 27580*	12'8" 7170	17'3" 5140	23'2" 3770
A3 SC ft-in lb		3'3" 26790*	12'10" 6870	17'6" 4890	23'5" 3550 29'10" 2770

*) Theoretical lifting capacity

MODELS	LIFTING MOMENT lb-ft	SLEWING ANGLE °	WORKING PRESSURE psi	OIL TANK CAPACITY Gal	MAX OIL FLOW gpm	MAX. VERTICAL REACH (HYDR.) ft. in.	CRANE WEIGHT (STAB. STANDARD) lb	DIMENSIONS in WxHxD
A2	86800	425	4200	34,34	7,93	40' 0"	4010	97x92x33
A3	-	425	4200	34,34	7,93	47' 3"	4270	97x92x33
A4	-	425	4200	34,34	7,93	54' 2"	4500	97x92x33
A5	-	425	4200	34,34	7,93	61' 4"	4720	97x92x36
A6	-	425	4200	34,34	7,93	68' 11"	4920	97x92x36
A3J2	-	425	4200	34,34	7,93	65' 3"	4950	97x97x38
A4J2	-	425	4200	34,34	7,93	72' 2"	5180	98x99x38
SC A2	90400	425	4200	34,34	10,57	35' 9"	3830	97x92x33
SC A3	-	425	4200	34,34	10,57	42' 4"	4050	97x92x33

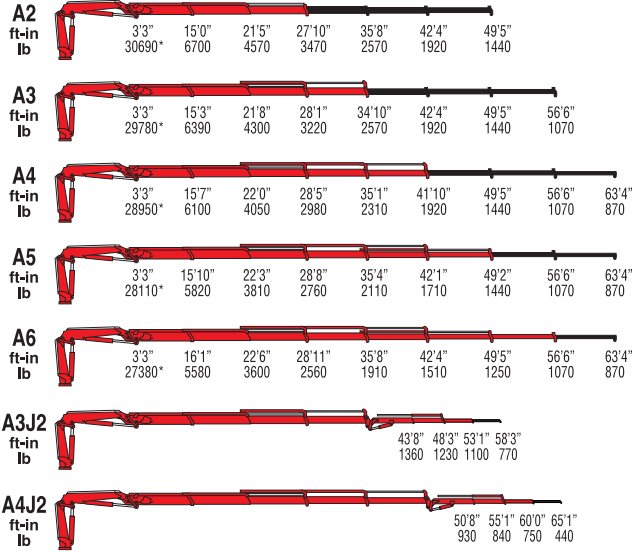




*) Theoretical lifting capacity

MODELS	LIFTING MOMENT	SLEWING ANGLE	WORKING PRESSURE	OIL TANK CAPACITY	MAX OIL FLOW	MAX. VERTICAL REACH (HYDR.)	CRANE WEIGHT (STAB. STANDARD)	DIMENSIONS
	lb-ft	°	psi	Gal	gpm	ft. in.	lb	in WxHxD
A2	89700	425	4420	34,34	7,93	40' 0"	4010	97x92x33
A3	-	425	4420	34,34	7,93	47' 3"	4270	97x92x33
A4	-	425	4420	34,34	7,93	54' 2"	4500	97x92x33
A5	-	425	4420	34,34	7,93	61' 4"	4720	97x92x36
A6	-	425	4420	34,34	7,93	68' 11"	4920	97x92x36
A3J2	-	425	4420	34,34	7,93	65' 3"	4950	97x97x38
A4J2	-	425	4420	34,34	7,93	72' 2"	5180	98x99x38



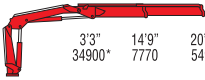
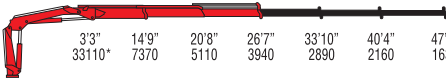
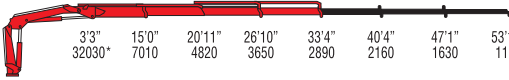
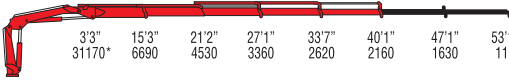



*) Theoretical lifting capacity

MODELS	LIFTING MOMENT	SLEWING ANGLE	WORKING PRESSURE	OIL TANK CAPACITY	MAX OIL FLOW	MAX. VERTICAL REACH (HYDR.)	CRANE WEIGHT (STAB. STANDARD)	DIMENSIONS
	lb-ft							
A2	100500	425	4710	34,34	15,85	40' 0"	4010	97x92x33
A3	-	425	4710	34,34	15,85	47' 3"	4270	97x92x33
A4	-	425	4710	34,34	15,85	54' 2"	4500	97x92x33
A5	-	425	4710	34,34	15,85	61' 4"	4720	97x92x36
A6	-	425	4710	34,34	15,85	68' 11"	4920	97x92x36
A3J2	-	425	4710	34,34	15,85	65' 3"	4950	97x97x38
A4J2	-	425	4710	34,34	15,85	72' 2"	5180	98x99x38



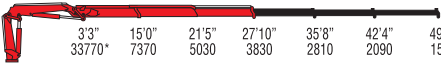




7160B

A1		3'3"	14'9"	20'8"					
ft-in		34900*	7770	5490					
lb									
A2		3'3"	14'9"	20'8"	26'7"	33'10"	40'4"	47'1"	
ft-in		33110*	7370	5110	3940	2890	2160	1630	
lb									
A3		3'3"	15'0"	20'11"	26'10"	33'4"	40'4"	47'1"	53'11"
ft-in		32030*	7010	4820	3650	2890	2160	1630	1180
lb									
A4		3'3"	15'3"	21'2"	27'1"	33'7"	40'1"	47'1"	53'11"
ft-in		31170*	6690	4530	3360	2620	2160	1630	1180
lb									
A5		3'3"	15'6"	21'5"	27'4"	33'10"	40'4"	47'1"	53'11"
ft-in		30290*	6400	4270	3120	2390	1930	1630	1180
lb									

*) Theoretical lifting capacity

MODELS	LIFTING MOMENT	SLEWING ANGLE	WORKING PRESSURE	OIL TANK CAPACITY	MAX OIL FLOW	MAX. VERTICAL REACH (HYDR.)	CRANE WEIGHT (STAB. STANDARD)	DIMENSIONS in WxHxD
	lb-ft	°	psi	Gal	gpm	ft. in.	lb	
A1	114300	425	4060	34,34	10,57	32' 6"	3910	99x91x33
A2	-	425	4060	34,34	10,57	38' 5"	4210	99x91x33
A3	-	425	4060	34,34	10,57	44' 11"	4460	99x91x33
A4	-	425	4060	34,34	10,57	51' 6"	4700	99x91x33
A5	-	425	4060	34,34	10,57	58' 5"	4890	99x91x36



A2 ft-in lb		3'3"	15'0"	21'5"	27'10"	35'8"	42'4"	49'5"						
		33770*	7370	5030	3830	2810	2090	1570						
A3 ft-in lb		3'3"	15'3"	21'8"	28'1"	34'10"	42'4"	49'5"	56'6"					
		32720*	7020	4720	3520	2810	2090	1570	1170					
A4 ft-in lb		3'3"	15'7"	22'0"	28'5"	35'1"	41'10"	49'5"	56'6"	63'4"				
		31830*	6700	4430	3250	2550	2090	1570	1170	880				
A5 ft-in lb		3'3"	15'10"	22'3"	28'8"	35'4"	42'1"	49'2"	56'6"	63'4"				
		30890*	6390	4180	3010	2290	1860	1570	1170	880				
A6 ft-in lb		3'3"	16'1"	22'6"	28'11"	35'8"	42'4"	49'5"	56'6"	63'4"				
		30050*	6120	3950	2790	2080	1640	1360	1170	880				
A3J3 ft-in lb									44'5"	49'8"	54'8"	59'11"	65'1"	71'0"
									1410	1200	1070	940	710	600

Short boom

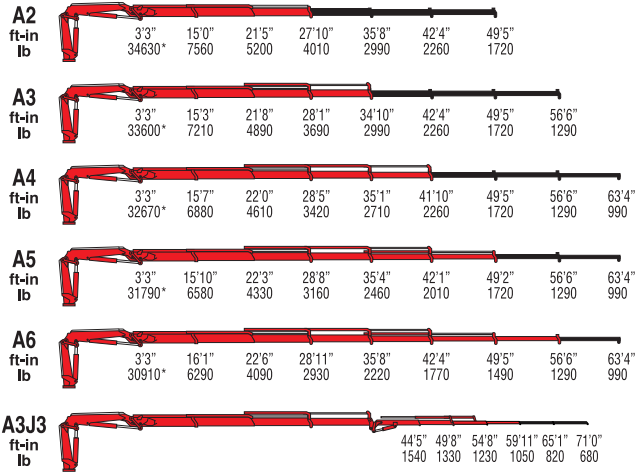
A2 SC ft-in lb		3'3"	12'6"	16'10"	23'3"
		34020*	8950	6540	4680

A3 SC ft-in lb		3'3"	12'8"	17'0"	23'3"	30'1"
		33180*	8620	6240	4410	3380

*) Theoretical lifting capacity

MODELS	LIFTING MOMENT	SLEWING ANGLE	WORKING PRESSURE	OIL TANK CAPACITY	MAX OIL FLOW	MAX. VERTICAL REACH (HYDR.)	CRANE WEIGHT (STAB. STANDARD)	DIMENSIONS
	lb-ft							
A2	110700	425	4350	34,34	10,57	40' 0"	4390	98x92x33
A3	-	425	4350	34,34	10,57	47' 3"	4670	98x92x33
A4	-	425	4350	34,34	10,57	54' 2"	4940	98x92x33
A5	-	425	4350	34,34	10,57	61' 4"	5180	98x92x36
A6	-	425	4350	34,34	10,57	68' 11"	5390	98x92x36
A3J3	-	425	4570	34,34	10,57	71' 10"	5750	98x103x38
SC A2	111400	425	4350	34,34	10,57	35' 9"	4140	97x92x33
SC A3	-	425	4350	34,34	10,57	42' 4"	4420	97x92x33



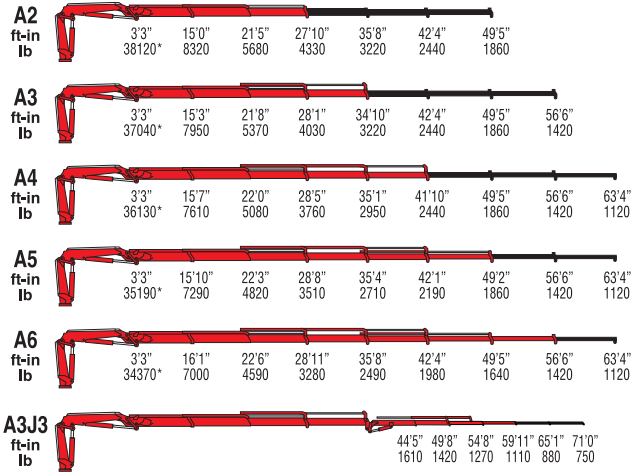


*) Theoretical lifting capacity

MODELS	LIFTING MOMENT lb-ft	SLEWING ANGLE °	WORKING PRESSURE psi	OIL TANK CAPACITY Gal	MAX OIL FLOW gpm	MAX. VERTICAL REACH (HYDR.) ft. in.	CRANE WEIGHT (STAB. STANDARD) lb	DIMENSIONS in WxHxD
A2	113600	425	4570	34,34	15,85	40' 0"	4400	98x92x33
A3	-	425	4570	34,34	15,85	47' 3"	4685	98x92x33
A4	-	425	4570	34,34	15,85	54' 2"	4950	98x92x33
A5	-	425	4570	34,34	15,85	61' 4"	5190	98x92x36
A6	-	425	4570	34,34	15,85	68' 11"	5400	98x92x36
A3J3	-	425	4780	34,34	15,85	71' 10"	5765	98x103x38



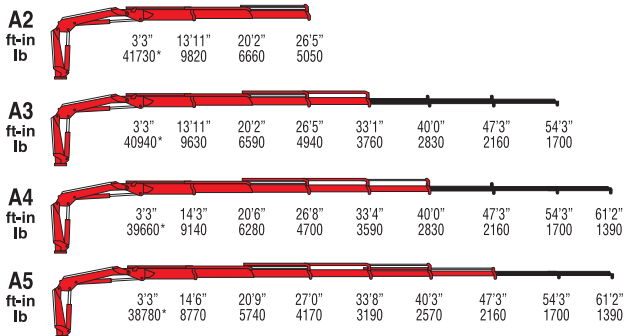
7183C



*) Theoretical lifting capacity

MODELS	LIFTING MOMENT lb-ft	SLEWING ANGLE °	WORKING PRESSURE psi	OIL TANK CAPACITY Gal	MAX OIL FLOW gpm	MAX. VERTICAL REACH (HYDR.) ft. in.	CRANE WEIGHT (STAB. STANDARD) lb	DIMENSIONS in WxHxD
A2	125100	425	4780	34,34	15,85	40' 0"	4400	98x92x33
A3	-	425	4780	34,34	15,85	47' 3"	4680	98x92x33
A4	-	425	4780	34,34	15,85	54' 2"	4950	98x92x33
A5	-	425	4780	34,34	15,85	61' 4"	5190	98x92x36
A6	-	425	4780	34,34	15,85	68' 11"	5400	98x92x36
A3J3	-	425	4930	34,34	15,85	71' 10"	5770	98x103x38





*) Theoretical lifting capacity

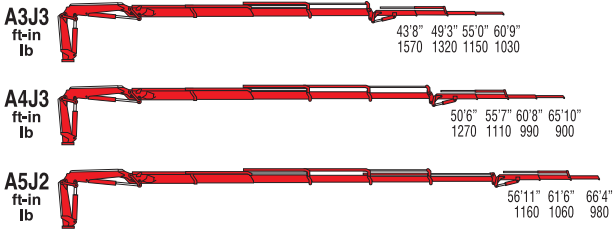
MODELS	LIFTING MOMENT lb-ft	SLEWING ANGLE °	WORKING PRESSURE psi	OIL TANK CAPACITY Gal	MAX OIL FLOW gpm	MAX. VERTICAL REACH (HYDR.) ft. in.	CRANE WEIGHT (STAB. STANDARD) lb	DIMENSIONS in WxHxD
A1	136700	415	4570	34,34	18,49	39' 1"	5080	100x91x37
A2	-	415	4570	34,34	18,49	45' 7"	5410	100x91x37
A3	-	415	4570	34,34	18,49	52' 10"	5730	100x91x37
A4	-	415	4570	34,34	18,49	59' 9"	5985	100x91x37



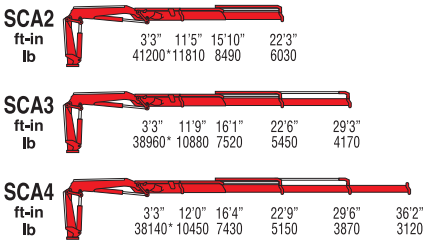
7213C

A2										
ft-in	3'3"	14'1"	20'7"	27'0"						
lb	43650	10150	6820	5150						
A3										
ft-in	3'3"	14'1"	20'7"	27'0"	33'10"	40'11"	48'2"	55'8"		
lb	41340*	9610	6310	4700	3690	2460	2070	1600		
A4										
ft-in	3'3"	14'4"	20'10"	27'4"	34'1"	40'11"	48'2"	55'8"	62'6"	
lb	40040*	9140	5960	4340	3370	2780	2070	1600	1320	
A5										
ft-in	3'3"	14'8"	21'1"	27'7"	34'4"	41'2"	48'2"	55'8"	62'6"	
lb	38740*	8690	5600	4020	3060	2470	2080	1600	1320	
A6										
ft-in	3'3"	14'11"	21'5"	27'10"	34'8"	41'5"	48'5"	55'8"	62'6"	
lb	37960*	8340	5340	4010	2980	2310	1860	1610	1320	

7213C



Short boom



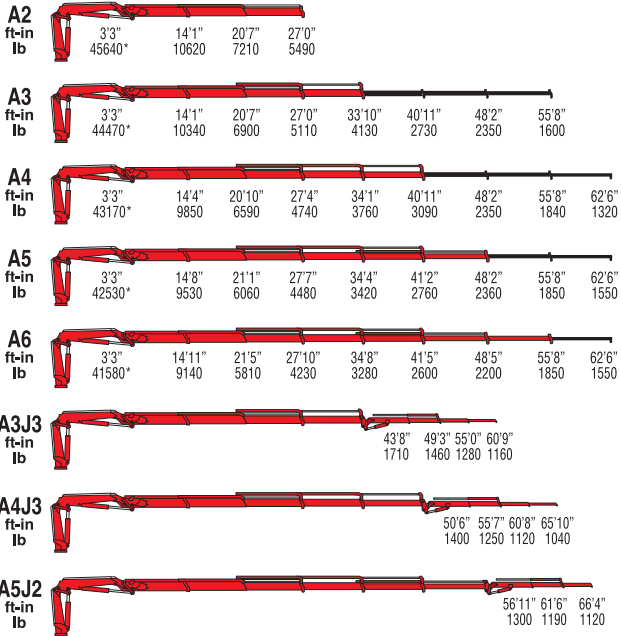
7213SC

*) Theoretical lifting capacity

MODELS	LIFTING MOMENT	SLEWING ANGLE	WORKING PRESSURE	OIL TANK CAPACITY	MAX OIL FLOW	MAX. VERTICAL REACH (HYDR.)	CRANE WEIGHT (STAB. STANDARD)	DIMENSIONS
	lb-ft							
A2	143200	415	4640	34,34	18,49	39' 4"	5455	100x91x37
A3	-	415	4640	34,34	18,49	46' 3"	5785	100x91x37
A4	-	415	4490	34,34	18,49	53' 2"	6120	100x91x37
A5	-	415	4490	34,34	18,49	60' 4"	6380	100x91x37
A6	-	415	4490	34,34	18,49	67' 11"	6590	100x91x37
A3J3	-	415	-	34,34	18,49	72' 10"	7240	100x107x42
A4J3	-	415	-	34,34	18,49	78' 1"	7200	100x103x42
A5J2	-	415	-	34,34	18,49	78' 5"	6990	100x101x42
SC A2	135300	415	4350	34,34	18,49	34' 5"	5580	98x91x35
SC A3	-	415	4350	34,34	18,49	41' 8"	5480	98x91x35
SC A4	-	415	4350	34,34	18,49	48' 7"	5745	98x91x35



7223C

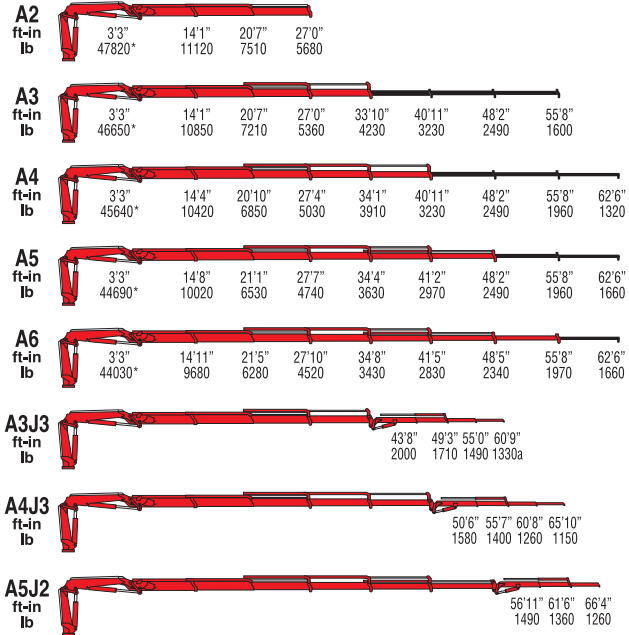


*) Theoretical lifting capacity

MODELS	LIFTING MOMENT	SLEWING ANGLE	WORKING PRESSURE	OIL TANK CAPACITY	MAX OIL FLOW	MAX. VERTICAL REACH (HYDR.)	CRANE WEIGHT (STAB. STANDARD)	DIMENSIONS
	lb-ft	°	psi	Gal	gpm	ft. in.	lb	in WxHxD
A2	149700	415	4860	34,34	18,49	39' 4"	5455	100x91x37
A3	-	415	4860	34,34	18,49	46' 3"	5785	100x91x37
A4	-	415	4860	34,34	18,49	53' 2"	6120	100x91x37
A5	-	415	4860	34,34	18,49	60' 4"	6380	100x91x37
A6	-	415	4860	34,34	18,49	67' 11"	6590	100x91x37
A3J3	-	415	-	34,34	18,49	72' 10"	7240	100x107x42
A4J3	-	415	-	34,34	18,49	78' 1"	7200	100x103x42
A5J2	-	415	-	34,34	18,49	78' 5"	6990	100x101x42



7231C

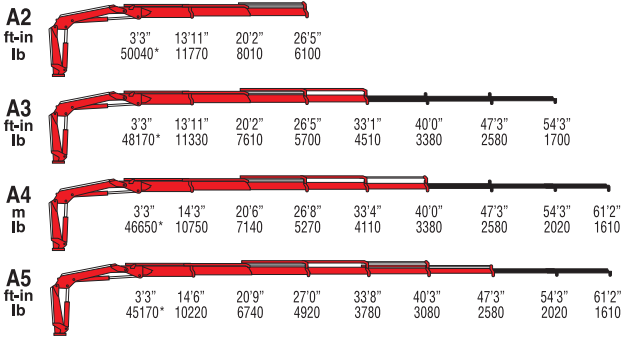


*) Theoretical lifting capacity

MODELS	LIFTING MOMENT	SLEWING ANGLE	WORKING PRESSURE	OIL TANK CAPACITY	MAX OIL FLOW	MAX. VERTICAL REACH (HYDR.)	CRANE WEIGHT (STAB. STANDARD)	DIMENSIONS
	lb-ft	°	psi	Gal	gpm	ft. in.	lb	in WxHxD
A2	17000	415	5000	34,34	18,49	39' 4"	5455	100x91x37
A3	-	415	5000	34,34	18,49	46' 3"	5785	100x91x37
A4	-	415	5000	34,34	18,49	53' 2"	6120	100x91x37
A5	-	415	5000	34,34	18,49	60' 4"	6380	100x91x37
A6	-	415	5000	34,34	18,49	67' 11"	6590	100x91x37
A3J3	-	415	-	34,34	18,49	72' 10"	7240	100x107x42
A4J3	-	415	-	34,34	18,49	78' 1"	7200	100x103x42
A5J2	-	415	-	34,34	18,49	78' 5"	6990	100x101x42



7240B



*) Theoretical lifting capacity

MODELS	LIFTING MOMENT lb-ft	SLEWING ANGLE °	WORKING PRESSURE psi	OIL TANK CAPACITY Gal	MAX OIL FLOW gpm	MAX. VERTICAL REACH (HYDR.) ft. in.	CRANE WEIGHT (STAB. STANDARD) lb	DIMENSIONS in WxHxD
A2	164200	415	4640	34,34	21,13	39' 1"	5480	100x91x37
A3	-	415	4640	34,34	21,13	45' 7"	5820	100x91x37
A4	-	415	4640	34,34	21,13	52' 6"	6150	100x91x37
A5	-	415	4640	34,34	21,13	59' 9"	6415	100x91x37



7243C

A2		3'3"	13'11"	20'1"	26'4"
	ft-in	49650*	11740	7980	6050
lb					

A3		3'3"	13'11"	20'1"	26'4"	33'0"	39'11"	47'3"	54'6"
	ft-in	48810*	11540	7760	5820	4610	3540	2870	2200
lb									

A4		3'3"	14'2"	20'4"	27'2"	33'3"	39'11"	47'3"	54'6"	61'10"
	ft-in	46940*	10890	7260	5370	4190	3400	2730	2200	1330
lb										

A5		3'3"	14'5"	20'8"	26'10"	33'6"	40'2"	47'2"	54'6"	61'10"	69'4"
	ft-in	45110*	10270	6780	4950	3800	3100	2600	1980	1650	1180
lb											

A6		3'3"	14'8"	20'11"	27'2"	33'10"	40'6"	47'6"	54'6"	61'10"	69'4"
	ft-in	44200*	9870	6460	4660	3530	2820	2330	2000	1330	1180
lb											

A7		3'3"	15'0"	21'2"	27'5"	34'1"	40'9"	47'9"	54'9"	61'10"	69'4"	76'3"
	ft-in	43390*	9510	6170	4400	3270	2560	2070	1750	1530	1260	770
lb												

A8		3'3"	15'3"	21'6"	27'9"	34'5"	41'1"	48'0"	55'0"	62'1"	69'4"	76'3"
	ft-in	42750*	9190	5930	4190	3080	2360	1870	1550	1330	1180	990
lb												

7243C



Short boom

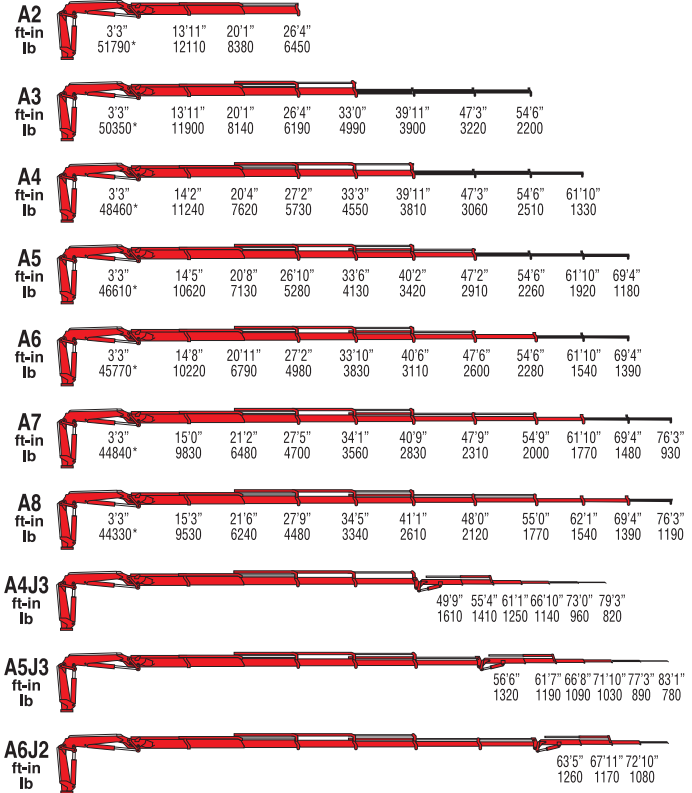


*) Theoretical lifting capacity

7243SC

MODELS	LIFTING MOMENT	SLEWING ANGLE	WORKING PRESSURE	OIL TANK CAPACITY	MAX OIL FLOW	MAX. VERTICAL REACH (HYDR.)	CRANE WEIGHT (STAB. STANDARD)	DIMENSIONS
	lb-ft							
A2	162700	415	4570	34,34	21,13	38' 5"	5730	100x91x37
A3	-	415	4490	34,34	21,13	45' 3"	6040	100x91x37
A4	-	415	4490	34,34	21,13	52' 2"	6350	100x91x37
A5	-	415	4490	34,34	21,13	59' 5"	6625	100x91x37
A6	-	415	4490	34,34	21,13	66' 7"	6855	100x91x37
A7	-	415	4490	34,34	21,13	73' 10"	7120	100x91x40
A8	-	415	4490	34,34	21,13	81' 4"	7320	100x91x40
A4J3	-	415	4710	34,34	21,13	79' 1"	7805	100x107x42
A5J3	-	415	4780	34,34	21,13	84' 0"	7705	100x103x42
A6J2	-	415	4710	34,34	21,13	85' 0"	7465	100x103x42
SC A2	164200	415	4640	34,34	21,13	35' 1"	5580	100x91x37
SC A3	-	415	4640	34,34	21,13	42' 0"	5885	100x91x37
SC A4	-	415	4640	34,34	21,13	48' 11"	6195	100x91x37

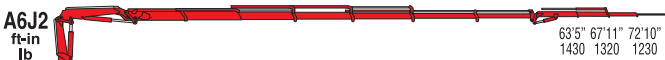
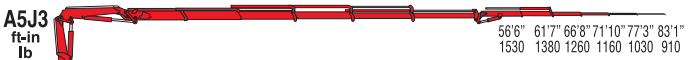
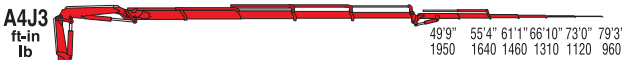
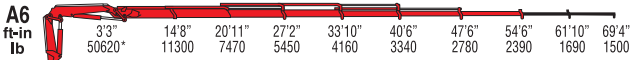
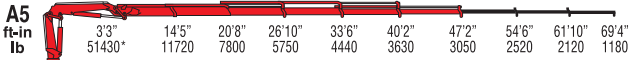




*) Theoretical lifting capacity

MODELS	LIFTING MOMENT lb-ft	SLEWING ANGLE °	WORKING PRESSURE psi	OIL TANK CAPACITY Gal	MAX OIL FLOW gpm	MAX. VERTICAL REACH (HYDR.) ft. in.	CRANE WEIGHT (STAB. STANDARD) lb	DIMENSIONS in WxHxD
A2	169300	415	4780	34,34	21,13	38' 5"	5730	100x91x37
A3	-	415	4780	34,34	21,13	45' 3"	6040	100x91x37
A4	-	415	4780	34,34	21,13	52' 2"	6350	100x91x37
A5	-	415	4780	34,34	21,13	59' 5"	6625	100x91x37
A6	-	415	4780	34,34	21,13	66' 7"	6855	100x91x37
A7	-	415	4780	34,34	21,13	73' 10"	7120	100x91x40
A8	-	415	4780	34,34	21,13	81' 4"	7320	100x91x40
A4J3	-	415	4860	34,34	21,13	79' 1"	7805	100x107x42
A5J3	-	415	4860	34,34	21,13	84' 0"	7705	100x103x42
A6J2	-	415	4780	34,34	21,13	85' 0"	7465	100x103x42





*) Theoretical lifting capacity

MODELS	LIFTING MOMENT lb-ft	SLEWING ANGLE °	WORKING PRESSURE psi	OIL TANK CAPACITY Gal	MAX OIL FLOW gpm	MAX. VERTICAL REACH (HYDR.) ft. in.	CRANE WEIGHT (STAB. STANDARD) lb	DIMENSIONS in WxHxD
A2	179400	415	5000	34,34	21,13	38' 5"	5730	100x91x37
A3	-	415	5000	34,34	21,13	45' 3"	6040	100x91x37
A4	-	415	5000	34,34	21,13	52' 2"	6350	100x91x37
A5	-	415	5000	34,34	21,13	59' 5"	6625	100x91x37
A6	-	415	5000	34,34	21,13	66' 7"	6855	100x91x37
A7	-	415	5000	34,34	21,13	73' 10"	7120	100x91x40
A8	-	415	5000	34,34	21,13	81' 4"	7320	100x91x40
A4J3	-	415	5150	34,34	21,13	79' 1"	7805	100x107x42
A5J3	-	415	5070	34,34	21,13	84' 0"	7705	100x103x42
A6J2	-	415	5070	34,34	21,13	85' 0"	7465	100x103x42



700 Series

***Articulated with
double linkage***

729

732

732SC

736R





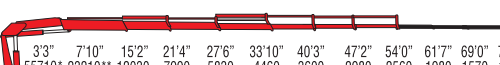

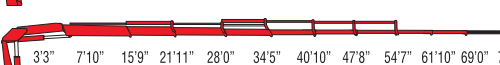


736RSC

745

746R

749R



A2	
ft-in	3'3" 7'10" 14'6" 20'7" 26'9" 33'3" 39'8" 46'10"
lb	60360* 25150** 13530 9330 7110 5380 4200 3270
A3	
ft-in	3'3" 7'10" 14'8" 20'9" 26'11" 33'4" 39'8" 46'10" 54'0"
lb	59750* 24890** 13390 9040 6780 5380 4200 3270 2560
A4	
ft-in	3'3" 7'10" 14'8" 20'9" 26'11" 33'4" 39'8" 46'10" 54'0" 61'7"
lb	57670* 24030** 12930 8710 6470 5090 4200 3270 2560 1980
A5	
ft-in	3'3" 7'10" 14'11" 21'0" 27'2" 33'7" 40'0" 46'10" 54'0" 61'7" 69'0"
lb	56570* 23570** 12430 8300 6120 4740 3890 3270 2560 1980 1570
A6	
ft-in	3'3" 7'10" 15'2" 21'4" 27'6" 33'10" 40'3" 47'2" 54'0" 61'7" 69'0" 76'3"
lb	55710* 23210** 12030 7990 5830 4460 3600 2980 2560 1980 1570 1260
A7	
ft-in	3'3" 7'10" 15'6" 21'7" 27'9" 34'2" 40'7" 47'5" 54'4" 61'7" 69'0" 76'3"
lb	54670* 22770** 11590 7640 5490 4180 3340 2710 2290 1980 1570 1260
A8	
ft-in	3'3" 7'10" 15'9" 21'11" 28'0" 34'5" 40'10" 47'8" 54'7" 61'10" 69'0" 76'3"
lb	53750* 22400** 11180 7320 5220 3940 3100 2490 2070 1790 1570 1260
A4J4	
ft-in	49'8" 55'3" 60'10" 66'5" 72'4" 78'7"
lb	1700 1430 1230 1090 980 770
A6J4	
ft-in	64'2" 69'5" 74'6" 79'0" 84'3" 90'3"
lb	1060 940 840 770 710 550

*) Theoretical lifting capacity

***) Capacity at fixed hook (only if with load limiting device in EC area)

MODELS	LIFTING MOMENT	SLEWING ANGLE	WORKING PRESSURE	OIL TANK CAPACITY	MAX OIL FLOW	MAX. VERTICAL REACH (HYDR.)	CRANE WEIGHT (STAB. STANDARD)	DIMENSIONS in WxHxD
	lb-ft	°	psi	Gal	gpm	ft. in.	lb	
A2	198200	400	4710	47,55	13,21	39' 1"	7070	99x94x40
A3	-	400	4710	47,55	13,21	45' 5"	7420	99x94x40
A4	-	400	4710	47,55	13,21	51' 10"	7760	99x94x40
A5	-	400	4710	47,55	13,21	58' 11"	8070	99x94x42
A6	-	400	4710	47,55	13,21	65' 11"	8340	99x94x42
A7	-	400	4710	47,55	13,21	73' 6"	8600	99x94x46
A8	-	400	4710	47,55	13,21	81' 0"	8820	99x94x47
A6J4	-	400	4710	47,55	13,21	95' 6"	9610	99x108x48



A1
 ft-in 3'3" 8'5" 13'5" 19'2" 25'1" 31'10" 38'8"
 lb 68870*25790**16710 11770 8490 6150 4630

732

A2
 ft-in 3'3" 8'5" 13'5" 19'2" 25'3" 31'10" 38'8" 46'2"
 lb 66820*25130**16380 11220 8490 6150 4630 3510

A3
 ft-in 3'3" 8'5" 13'5" 19'2" 25'3" 31'10" 38'9" 46'3" 53'10"
 lb 65260*24470**15920 10870 8090 6330 4630 3510 2690

A4
 ft-in 3'3" 8'5" 13'9" 19'6" 25'7" 32'2" 38'9" 46'3" 53'10" 61'6"
 lb 63980*23810**15230 10340 7610 5860 4810 3510 2690 2120

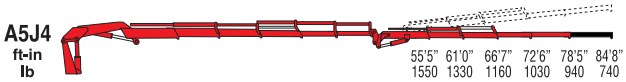
A5
 ft-in 3'3" 8'5" 14'1" 19'10" 25'11" 32'6" 39'1" 46'3" 53'10" 61'6" 68'5"
 lb 62850*23150**14620 9880 7230 5470 4430 3680 2690 2120 1740

A6
 ft-in 3'3" 8'5" 14'3" 20'4" 26'3" 32'10" 39'4" 46'7" 53'10" 61'6" 68'5"
 lb 61290*22600**14090 9410 6810 5110 4080 3330 2840 2120 1740

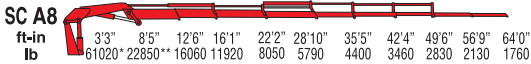
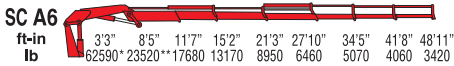
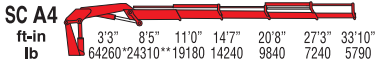
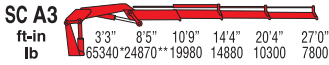
A7
 ft-in 3'3" 8'5" 14'9" 20'8" 26'11" 33'6" 40'0" 47'3" 54'6" 61'6" 68'5"
 lb 60030*22050**13340 8950 6480 4810 3750 3020 2540 2200 1740

A8
 ft-in 3'3" 8'5" 15'1" 21'0" 27'3" 33'10" 40'4" 47'7" 54'9" 62'0" 69'1" 77'1"
 lb 59020*21940**12830 8510 6060 4450 3460 2760 2270 1960 1740 880

A4J4
 ft-in 48'3" 53'10" 59'9" 65'3" 71'2" 77'1"
 lb 2400 2060 1800 1530 1330 940



Short boom



732SC R



*) Theoretical lifting capacity
 **) Capacity at fixed hook (only if with load limiting device in EC area)

MODELS	LIFTING MOMENT	SLEWING ANGLE	WORKING PRESSURE	OIL TANK CAPACITY	MAX OIL FLOW	MAX. VERTICAL REACH (HYDR.)	CRANE WEIGHT (STAB. STANDARD)	DIMENSIONS
	lb-ft							
A1	225700	397	4350	42,27	11,89	32' 6"	7910	99x93x47
A2	-	397	4350	42,27	11,89	38' 9"	8420	99x93x47
A3	-	397	4350	42,27	11,89	45' 3"	8910	99x93x47
A4	-	397	4350	42,27	11,89	51' 10"	9410	99x93x47
A5	-	397	4350	42,27	11,89	59' 5"	9790	99x93x47
A6	-	397	4350	42,27	11,89	66' 11"	10140	99x95x47
A7	-	397	4350	42,27	11,89	74' 6"	10410	99x99x49
A8	-	397	4350	42,27	11,89	82' 0"	10670	100x101x52
A4J4	-	397	4200	42,27	11,89	84' 4"	11270	101x104x53
A5J4	-	397	4200	42,27	11,89	91' 10"	11640	101x104x53
SC A2	219200	397	4350	42,27	11,89	33' 6"	8270	101x93x47
SC A3	-	397	4350	42,27	11,89	40' 4"	8750	101x93x47
SC A4	-	397	4350	42,27	11,89	47' 3"	9260	101x93x47
SC A5	-	397	4350	42,27	11,89	54' 9"	9630	101x93x47
SC A6	-	397	4350	42,27	11,89	62' 0"	9990	101x95x47
SC A7	-	397	4350	42,27	11,89	69' 11"	10250	101x99x49
SC A8	-	397	4350	42,27	11,89	77' 5"	10520	100x101x52



A1

ft-in	3'3"	8'5"	13'5"	19'2"	25'1"	31'10"	38'8"
lb	71450*	26680**	17170	12210	8880	6700	5160

A2

ft-in	3'3"	8'5"	13'5"	19'2"	25'3"	31'10"	38'8"	46'2"
lb	68630*	25790**	16820	11640	8880	6700	5160	3990

A3

ft-in	3'3"	8'5"	13'5"	19'2"	25'3"	31'10"	38'9"	46'3"	53'10"
lb	67060*	25130**	16360	11290	8490	6700	5160	3990	3130

A4

ft-in	3'3"	8'5"	13'9"	19'6"	25'7"	32'2"	38'9"	46'3"	53'10"	61'6"
lb	65830*	24470**	15670	10740	8000	6220	5160	3950	3130	2470

A5

ft-in	3'3"	8'5"	14'1"	19'10"	25'11"	32'6"	39'1"	46'3"	53'10"	61'6"	68'5"
lb	64660*	23810**	15040	10270	7580	5820	4760	3990	3130	2470	1960

A6

ft-in	3'3"	8'5"	14'3"	20'4"	26'3"	32'10"	39'4"	46'7"	53'10"	61'6"	68'5"
lb	63100*	23260**	14510	9790	7140	5420	4390	3620	3130	2470	1960

A7

ft-in	3'3"	8'5"	14'9"	20'8"	26'11"	33'6"	40'0"	47'3"	54'6"	61'6"	68'5"
lb	61910*	22710**	13760	9330	6810	5110	4060	3280	2800	2470	1960

A8

ft-in	3'3"	8'5"	15'1"	21'0"	27'3"	33'10"	40'4"	47'7"	54'9"	62'0"	69'1"	77'1"
lb	60850*	22600**	13230	8860	6370	4740	3730	3000	2510	2200	1960	930

A4J4

ft-in						48'3"	53'10"	59'9"	65'3"	71'2"	77'1"
lb						2580	2240	1970	1770	1550	1090

736R



736R



RADIOCONTROL

A5J4
ft-in
lb



Short boom

SC A2
ft-in
lb



736SC R



RADIOCONTROL

SC A3
ft-in
lb



SC A4
ft-in
lb



SC A5
ft-in
lb



SC A6
ft-in
lb



SC A7
ft-in
lb



SC A8
ft-in
lb

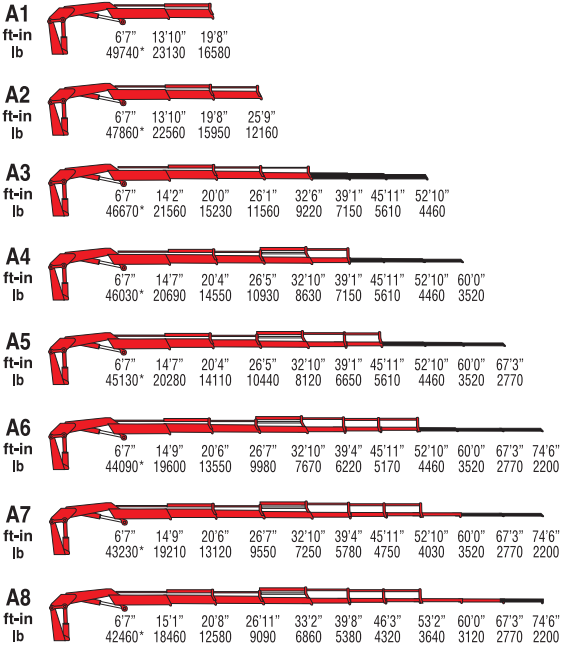


*) Theoretical lifting capacity

**) Capacity at fixed hook (only if with load limiting device in EC area)

MODELS	LIFTING MOMENT	SLEWING ANGLE	WORKING PRESSURE	OIL TANK CAPACITY	MAX OIL FLOW	MAX. VERTICAL REACH (HYDR.)	CRANE WEIGHT (STAB. STANDARD)	DIMENSIONS
	lb-ft	°	psi	Gal	gpm	ft. in.	lb	in WxHxD
A1	234300	397	4490	42,27	11,89	32' 6"	7910	99x93x47
A2	-	397	4490	42,27	11,89	38' 9"	8420	99x93x47
A3	-	397	4490	42,27	11,89	45' 3"	8910	99x93x47
A4	-	397	4490	42,27	11,89	51' 10"	9410	99x93x47
A5	-	397	4490	42,27	11,89	59' 5"	9790	99x93x47
A6	-	397	4490	42,27	11,89	66' 11"	10140	99x95x47
A7	-	397	4490	42,27	11,89	74' 6"	10410	99x99x49
A8	-	397	4490	42,27	11,89	82' 0"	10670	100x101x52
A4J4	-	397	4350	42,27	11,89	84' 4"	11270	101x104x53
A5J4	-	397	4350	42,27	11,89	91' 10"	11640	101x104x53
SC A2	227100	397	4490	42,27	11,89	33' 6"	8270	101x93x47
SC A3	-	397	4490	42,27	11,89	40' 4"	8750	101x93x47
SC A4	-	397	4490	42,27	11,89	47' 3"	9260	101x93x47
SC A5	-	397	4490	42,27	11,89	54' 9"	9630	101x93x47
SC A6	-	397	4490	42,27	11,89	62' 0"	9990	101x95x47
SC A7	-	397	4490	42,27	11,89	69' 11"	10250	101x99x49
SC A8	-	397	4490	42,27	11,89	77' 5"	10520	100x101x52





*) Theoretical lifting capacity

MODELS	LIFTING MOMENT	SLEWING ANGLE	WORKING PRESSURE	OIL TANK CAPACITY	MAX OIL FLOW	MAX. VERTICAL REACH (HYDR.)	CRANE WEIGHT (STAB. STANDARD)	DIMENSIONS
	lb-ft							
A1	326200	400	4350	55,48	13,21	33' 6"	9440	99x97x50
A2	-	400	4350	55,48	13,21	39' 4"	10010	99x97x51
A3	-	400	4350	55,48	13,21	46' 3"	10560	99x97x51
A4	-	400	4350	55,48	13,21	52' 10"	11180	99x97x51
A5	-	400	4350	55,48	13,21	59' 9"	11710	99x97x51
A6	-	400	4350	55,48	13,21	66' 7"	12150	99x97x51
A7	-	400	4350	55,48	13,21	73' 10"	12570	99x97x56
A8	-	400	4350	55,48	13,21	81' 0"	12960	99x98x56



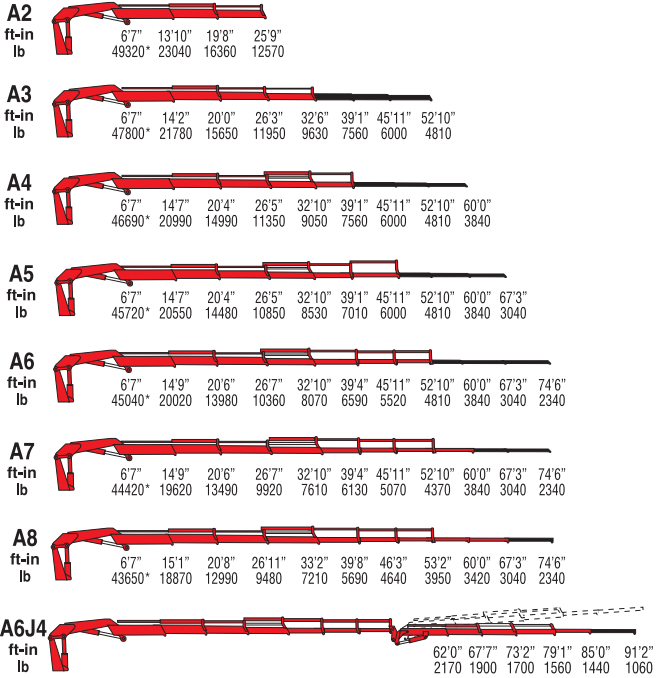


A2	
ft-in	6'7" 13'10" 19'8" 25'9"
lb	47860* 22560 15950 12160
A3	
ft-in	6'7" 14'2" 20'0" 26'1" 32'6" 39'1" 45'11" 52'10"
lb	46670* 21560 15230 11560 9220 7150 5610 4460
A4	
ft-in	6'7" 14'7" 20'4" 26'5" 32'10" 39'1" 45'11" 52'10" 60'0"
lb	46030* 20690 14550 10930 8630 7150 5610 4460 3520
A5	
ft-in	6'7" 14'7" 20'4" 26'5" 32'10" 39'1" 45'11" 52'10" 60'0" 67'3"
lb	45130* 20280 14110 10440 8120 6650 5610 4460 3520 2770
A6	
ft-in	6'7" 14'9" 20'6" 26'7" 32'10" 39'4" 45'11" 52'10" 60'0" 67'3" 74'6"
lb	44090* 19600 13550 9980 7670 6220 5170 4460 3520 2770 2200
A7	
ft-in	6'7" 14'9" 20'6" 26'7" 32'10" 39'4" 45'11" 52'10" 60'0" 67'3" 74'6"
lb	43230* 19210 13120 9550 7250 5780 4750 4030 3520 2770 2200
A8	
ft-in	6'7" 15'1" 20'8" 26'11" 33'2" 39'8" 46'3" 53'2" 60'0" 67'3" 74'6"
lb	42460* 18460 12580 9090 6860 5380 4320 3640 3120 2770 2200
A6J4	
ft-in	62'0" 67'7" 73'2" 79'1" 85'0" 91'2"
lb	1940 1700 1500 1370 1260 990

*) Theoretical lifting capacity

MODELS	LIFTING MOMENT	SLEWING ANGLE	WORKING PRESSURE	OIL TANK CAPACITY	MAX OIL FLOW	MAX. VERTICAL REACH (HYDR.)	CRANE WEIGHT (STAB. STANDARD)	DIMENSIONS
	lb-ft	°	psi	Gal	gpm	ft. in.	lb	in WxHxD
A2	313900	400	4350	55,48	21,13	39' 4"	10010	99x97x51
A3	-	400	4350	55,48	21,13	46' 3"	10560	99x97x51
A4	-	400	4350	55,48	21,13	52' 10"	11180	99x97x51
A5	-	400	4350	55,48	21,13	59' 9"	11710	99x97x51
A6	-	400	4350	55,48	21,13	66' 7"	12150	99x97x51
A7	-	400	4350	55,48	21,13	73' 10"	12570	99x97x56
A8	-	400	4350	55,48	21,13	81' 0"	12960	99x98x56
A6J4	-	400	4350	55,48	21,13	98' 9"	14070	100x108x58





*) Theoretical lifting capacity

MODELS	LIFTING MOMENT lb-ft	SLEWING ANGLE °	WORKING PRESSURE psi	OIL TANK CAPACITY Gal	MAX OIL FLOW gpm	MAX. VERTICAL REACH (HYDR.) ft. in.	CRANE WEIGHT (STAB. STANDARD) lb	DIMENSIONS in WxHxD
A2	323300	400	4640	55,48	21,13	39' 4"	10100	99x97x51
A3	-	400	4640	55,48	21,13	46' 3"	10650	99x97x51
A4	-	400	4640	55,48	21,13	52' 10"	11270	99x97x51
A5	-	400	4640	55,48	21,13	59' 9"	11790	99x97x51
A6	-	400	4640	55,48	21,13	66' 7"	12240	99x97x51
A7	-	400	4640	55,48	21,13	73' 10"	12650	99x97x56
A8	-	400	4640	55,48	21,13	81' 0"	13050	99x98x56
A6J4	-	400	4640	55,48	21,13	98' 9"	14150	100x108x58



8 **Series**

Basic articulated
NO CE

108

128

148

178

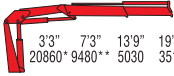

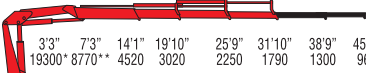
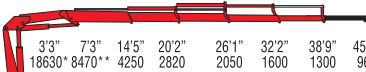
238

248

258

268

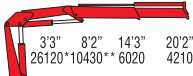



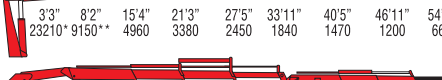



A1 ft-in lb		3'3"	7'3"	13'9"	19'6"				
		20860*	9480**	5030	3510				
A2 ft-in lb		3'3"	7'3"	13'9"	19'6"	25'5"	31'10"	38'9"	45'7"
		19890*	9040**	4810	3310	2490	1790	1300	960
A3 ft-in lb		3'3"	7'3"	14'1"	19'10"	25'9"	31'10"	38'9"	45'7"
		19300*	8770**	4520	3020	2250	1790	1300	960
A4 ft-in lb		3'3"	7'3"	14'5"	20'2"	26'1"	32'2"	38'9"	45'7"
		18630*	8470**	4250	2820	2050	1600	1300	960
A5 ft-in lb		3'3"	7'3"	14'8"	20'6"	26'5"	32'6"	38'7"	45'1"
		17950*	8160	4010	2620	1870	1420	1150	960

*) Theoretical lifting capacity
 **) Capacity at fixed hook (only if with load limiting device in EC area)

MODELS	LIFTING MOMENT	SLEWING ANGLE	WORKING PRESSURE	OIL TANK CAPACITY	MAX OIL FLOW	MAX. VERTICAL REACH (HYDR.)	CRANE WEIGHT (STAB. STANDARD)	DIMENSIONS
	lb-ft		psi					
A1	68400	395	4200	15,85	6,60	31' 0"	2710	98x86x26
A2	-	395	4200	15,85	6,60	37' 1"	2945	98x86x26
A3	-	395	4200	15,85	6,60	43' 4"	3155	98x86x26
A4	-	395	4200	15,85	6,60	50' 2"	3350	98x86x26
A5	-	395	4200	15,85	6,60	56' 9"	3505	98x86x30



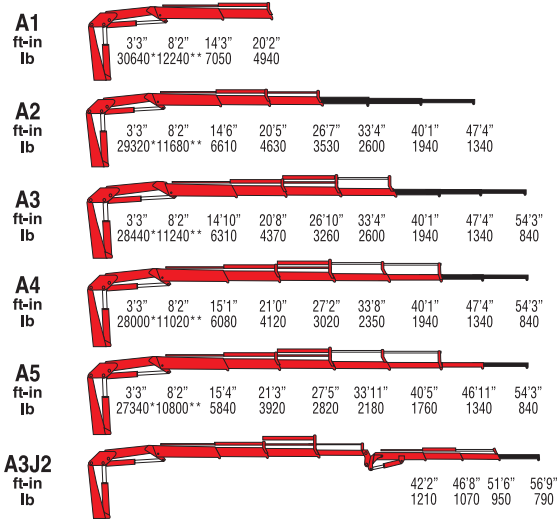
A1 ft-in lb		3'3"	8'2"	14'3"	20'2"							
		26120*	10430**	6020	4210							
A2 ft-in lb		3'3"	8'2"	14'6"	20'5"	26'7"	33'4"	40'1"	47'4"			
		24850*	9850**	5620	3970	3000	2200	1610	1200			
A3 ft-in lb		3'3"	8'2"	14'10"	20'8"	26'10"	33'4"	40'1"	47'4"	54'3"		
		24160*	9550**	5360	3750	2780	2200	1610	1200	660		
A4 ft-in lb		3'3"	8'2"	15'1"	21'0"	27'2"	33'8"	40'1"	47'4"	54'3"		
		23520*	9280**	5110	3480	2560	1960	1610	1200	660		
A5 ft-in lb		3'3"	8'2"	15'4"	21'3"	27'5"	33'11"	40'5"	46'11"	54'3"		
		23210*	9150**	4960	3380	2450	1840	1470	1200	660		
A3J2 ft-in lb									42'2"	46'8"	51'6"	56'9"
									1210	1070	950	790

*) Theoretical lifting capacity

**) Capacity at fixed hook (only if with load limiting device in EC area)

MODELS	LIFTING MOMENT	SLEWING ANGLE	WORKING PRESSURE	OIL TANK CAPACITY	MAX OIL FLOW	MAX. VERTICAL REACH (HYDR.)	CRANE WEIGHT (STAB. STANDARD)	DIMENSIONS
	lb-ft		psi					
A1	86100	380	4490	26,42	6,60	31' 6"	3405	97x93x34
A2	-	380	4490	26,42	6,60	37' 9"	3670	97x93x34
A3	-	380	4490	26,42	6,60	44' 3"	3900	97x93x34
A4	-	380	4490	26,42	6,60	50' 10"	4110	98x93x34
A5	-	380	4490	26,42	6,60	57' 9"	4310	99x93x38
A3J2	-	380	4200	26,42	6,60	61' 8"	4585	99x93x41

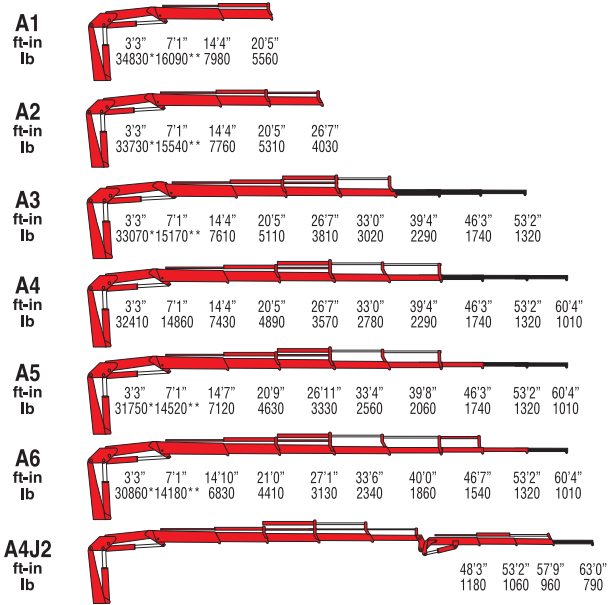




*) Theoretical lifting capacity
 **) Capacity at fixed hook (only if with load limiting device in EC area)

MODELS	LIFTING MOMENT	SLEWING ANGLE	WORKING PRESSURE	OIL TANK CAPACITY	MAX OIL FLOW	MAX. VERTICAL REACH (HYDR.)	CRANE WEIGHT (STAB. STANDARD)	DIMENSIONS
	lb-ft	°	psi	Gal	gpm	ft. in.	lb	in WxHxD
A1	100500	380	4200	26,42	6,60	31' 6"	3705	97x93x34
A2	-	380	4200	26,42	6,60	37' 9"	3990	97x93x34
A3	-	380	4200	26,42	6,60	44' 3"	4255	97x93x34
A4	-	380	4200	26,42	6,60	50' 10"	4475	98x93x34
A5	-	380	4200	26,42	6,60	57' 9"	4675	99x93x38
A3J2	-	380	4200	26,42	6,60	61' 8"	4940	99x93x41

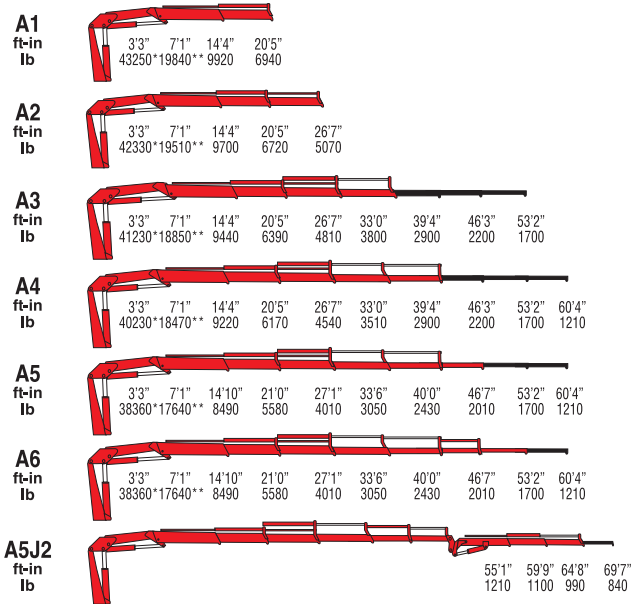




*) Theoretical lifting capacity
 **) Capacity at fixed hook (only if with load limiting device in EC area)

MODELS	LIFTING MOMENT	SLEWING ANGLE	WORKING PRESSURE	OIL TANK CAPACITY	MAX OIL FLOW	MAX. VERTICAL REACH (HYDR.)	CRANE WEIGHT (STAB. STANDARD)	DIMENSIONS in WxHxD
	lb-ft	°	psi	Gal	gpm	ft. in.	lb	
A1	114300	387	4490	34,34	8,45	32' 6"	4695	98x91x39
A2	-	387	4490	34,34	8,45	38' 9"	5005	98x91x39
A3	-	387	4490	34,34	8,45	45' 3"	5270	98x91x40
A4	-	387	4490	34,34	8,45	51' 6"	5535	98x91x40
A5	-	387	4490	34,34	8,45	58' 5"	5775	98x91x40
A6	-	387	4490	34,34	8,45	65' 0"	5950	99x91x40
A4J2	-	387	4490	34,34	8,45	69' 3"	6215	98x91x41

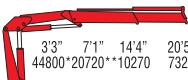
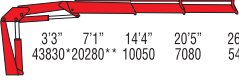

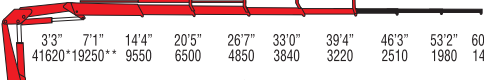







*) Theoretical lifting capacity
**) Capacity at fixed hook (only if with load limiting device in EC area)

MODELS	LIFTING MOMENT	SLEWING ANGLE	WORKING PRESSURE	OIL TANK CAPACITY	MAX OIL FLOW	MAX. VERTICAL REACH (HYDR.)	CRANE WEIGHT (STAB. STANDARD)	DIMENSIONS
	lb-ft							
A1	141800	387	4350	34,34	10,57	32' 6"	5025	98x91x39
A2	-	387	4350	34,34	10,57	38' 9"	5355	98x91x39
A3	-	387	4350	34,34	10,57	45' 3"	5665	98x91x40
A4	-	387	4350	34,34	10,57	51' 6"	5950	98x91x40
A5	-	387	4350	34,34	10,57	58' 5"	6175	98x91x40
A6	-	387	4350	34,34	10,57	65' 0"	6395	99x91x40
A5J2	-	387	4350	34,34	10,57	76' 5"	6910	98x91x41

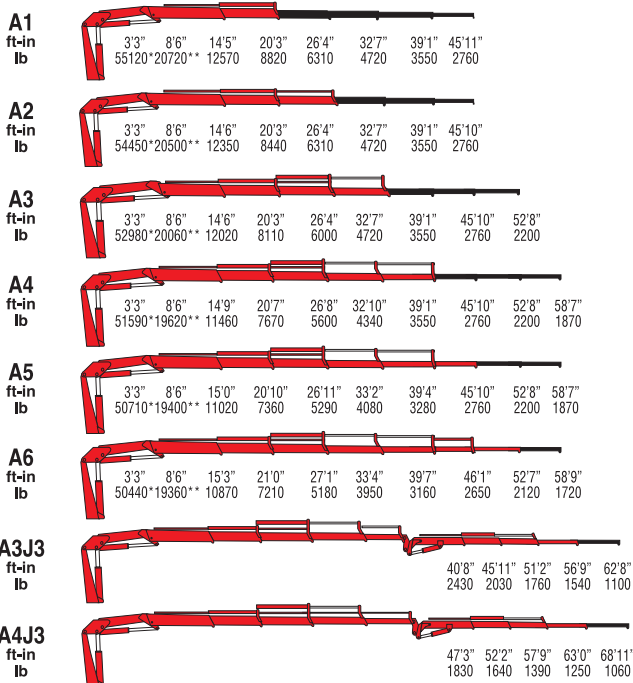


A1 ft-in lb		3'3" 7'1" 14'4" 20'5" 44800*20720**10270 7320
A2 ft-in lb		3'3" 7'1" 14'4" 20'5" 26'7" 43830*20280** 10050 7080 5420
A3 ft-in lb		3'3" 7'1" 14'4" 20'5" 26'7" 33'0" 39'4" 46'3" 53'2" 42580*19690** 9770 6720 5140 4170 3220 2510 1980
A4 ft-in lb		3'3" 7'1" 14'4" 20'5" 26'7" 33'0" 39'4" 46'3" 53'2" 60'4" 41620*19250** 9550 6500 4850 3840 3220 2510 1980 1430
A5 ft-in lb		3'3" 7'1" 14'7" 20'9" 26'11" 33'4" 39'8" 46'3" 53'2" 60'4" 40610*18780** 9130 6130 4520 3570 2910 2510 1980 1430
A6 ft-in lb		3'3" 7'1" 14'10" 21'0" 27'1" 33'6" 40'0" 46'7" 53'2" 60'4" 39760*18360** 8800 5860 4300 3350 2690 2290 1980 1430
A5J2 ft-in lb		55'1" 59'9" 64'8" 69'7" 1330 1210 1110 880

*) Theoretical lifting capacity
 **) Capacity at fixed hook (only if with load limiting device in EC area)

MODELS	LIFTING MOMENT	SLEWING ANGLE	WORKING PRESSURE	OIL TANK CAPACITY	MAX OIL FLOW	MAX. VERTICAL REACH (HYDR.)	CRANE WEIGHT (STAB. STANDARD)	DIMENSIONS in WxHxD
	lb-ft	°	psi	Gal	gpm	ft. in.	lb	
A1	146800	387	4570	34,34	10,57	32' 6"	5095	98x91x39
A2	-	387	4570	34,34	10,57	38' 9"	5425	98x91x39
A3	-	387	4570	34,34	10,57	45' 3"	5730	98x91x40
A4	-	387	4570	34,34	10,57	51' 6"	6020	98x91x40
A5	-	387	4570	34,34	10,57	58' 5"	6240	98x91x40
A6	-	387	4570	34,34	10,57	65' 0"	6460	99x91x40
A5J2	-	387	4570	34,34	10,57	76' 5"	6980	98x91x45

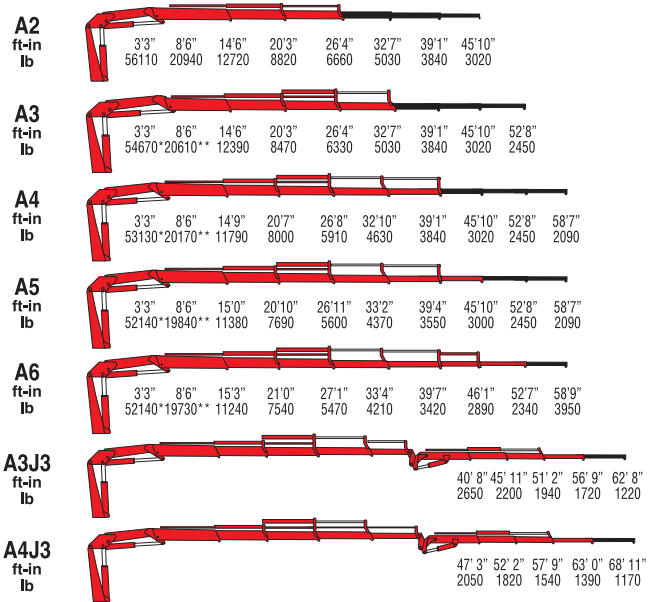




*) Theoretical lifting capacity
**) Capacity at fixed hook (only if with load limiting device in EC area)

MODELS	LIFTING MOMENT	SLEWING ANGLE	WORKING PRESSURE	OIL TANK CAPACITY	MAX OIL FLOW	MAX. VERTICAL REACH (HYDR.)	CRANE WEIGHT (STAB. STANDARD)	DIMENSIONS
	lb-ft							
A1	180800	400	4200	42,27	13,21	32' 2"	6660	99x92x44
A2	-	400	4200	42,27	13,21	38' 1"	7055	99x92x44
A3	-	400	4200	42,27	13,21	44' 0"	7365	99x92x44
A4	-	400	4200	42,27	13,21	50' 2"	7715	99x92x44
A5	-	400	4200	42,27	13,21	56' 9"	8025	99x92x44
A6	-	400	4200	42,27	13,21	63' 4"	8235	101x92x48
A3J3	-	400	4200	42,27	13,21	66' 3"	8575	99x96x52
A4J3	-	400	4200	42,27	13,21	72' 6"	8905	99x97x52





*) Theoretical lifting capacity
 **) Capacity at fixed hook (only if with load limiting device in EC area)

MODELS	LIFTING MOMENT	SLEWING ANGLE	WORKING PRESSURE	OIL TANK CAPACITY	MAX OIL FLOW	MAX. VERTICAL REACH (HYDR.)	CRANE WEIGHT (STAB. STANDARD)	DIMENSIONS
	lb-ft							
A2	183700	400	4420	42,27	13,21	38' 1"	7165	99x92x44
A2	-	400	4420	42,27	13,21	44' 0"	7475	99x92x44
A4	-	400	4420	42,27	13,21	50' 2"	7825	99x92x44
A5	-	400	4420	42,27	13,21	56' 9"	8135	99x92x44
A6	-	400	4420	42,27	13,21	63' 4"	8345	101x92x48
A3J3	-	400	4420	42,27	13,21	66' 3"	8685	99x96x52
A4J3	-	400	4420	42,27	13,21	72' 6"	9015	99x97x52



FERRARI



IVECO

NEW AGE

**9000
Series**

***Endless slewing
with double linkage***

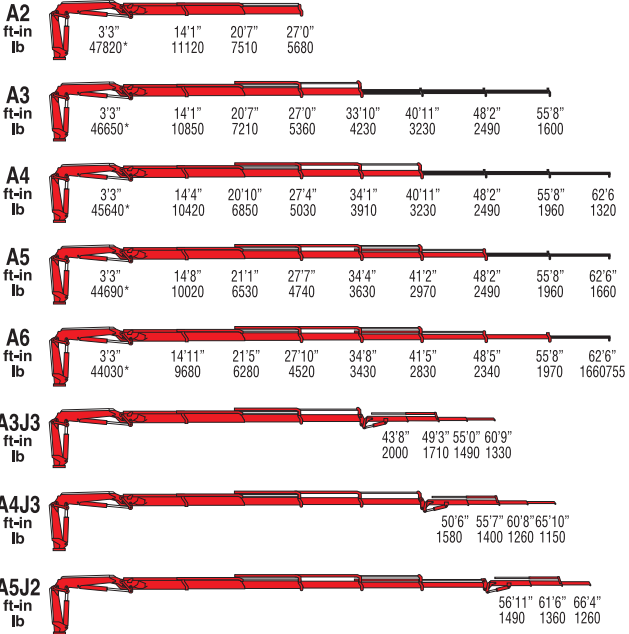
9235C

9265C

9601C

9661C

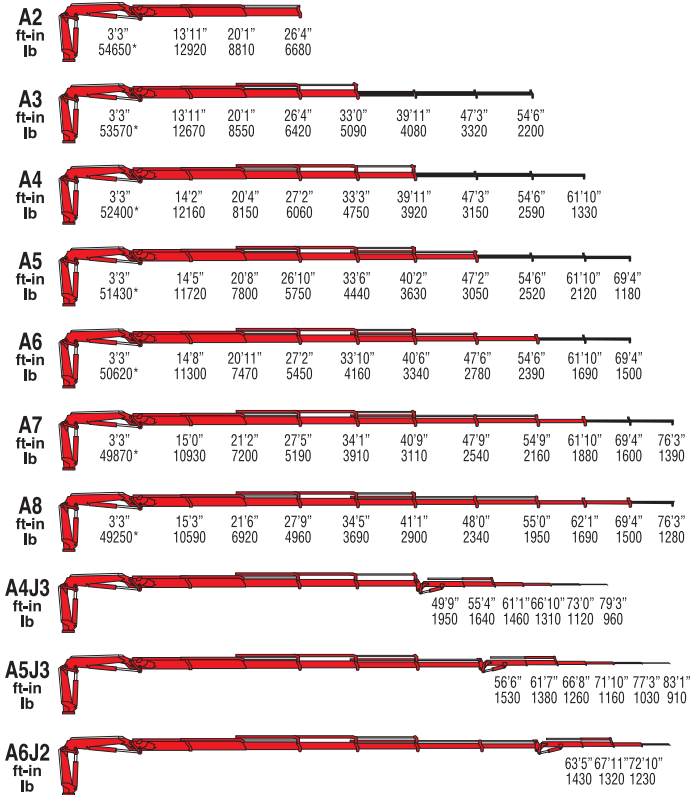




*) Theoretical lifting capacity

MODELS	LIFTING MOMENT	SLEWING ANGLE	WORKING PRESSURE	OIL TANK CAPACITY	MAX OIL FLOW	MAX. VERTICAL REACH (HYDR.)	CRANE WEIGHT (STAB. STANDARD)	DIMENSIONS
	lb-ft	°	psi	Gal	gpm	ft. in.	lb	in WxHxD
A2	157000	Endless	5000	34,34	18,49	39' 4"	5810	100x92x38
A3	-	Endless	5000	34,34	18,49	46' 3"	6140	100x92x38
A4	-	Endless	5000	34,34	18,49	53' 2"	6470	100x92x38
A5	-	Endless	5000	34,34	18,49	60' 4"	6735	100x92x38
A6	-	Endless	5000	34,34	18,49	67' 11"	6945	100x92x38
A3J3	-	Endless	-	34,34	18,49	72' 10"	7595	101x106x44
A4J3	-	Endless	-	34,34	18,49	78' 1"	7550	101x102x44
A5J2	-	Endless	-	34,34	18,49	78' 5"	7340	101x100x44

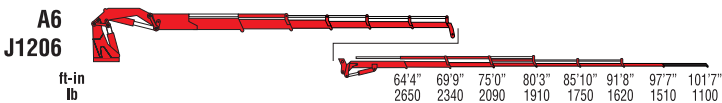
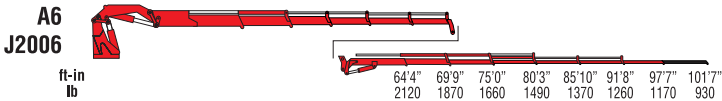
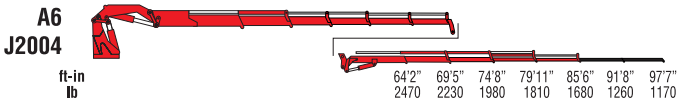
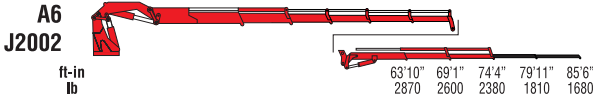
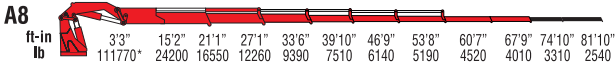
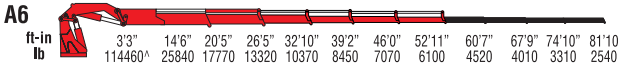
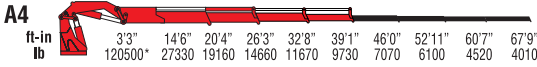




*) Theoretical lifting capacity

MODELS	LIFTING MOMENT	SLEWING ANGLE	WORKING PRESSURE	OIL TANK CAPACITY	MAX OIL FLOW	MAX. VERTICAL REACH (HYDR.)	CRANE WEIGHT (STAB. STANDARD)	DIMENSIONS
	lb-ft	°	psi	Gal	gpm	ft. in.	lb	in WxHxD
A2	179400	Endless	5000	34,34	21,13	38' 5"	6050	100x92x39
A3	-	Endless	5000	34,34	21,13	45' 3"	6360	100x92x39
A4	-	Endless	5000	34,34	21,13	52' 2"	6670	100x92x39
A5	-	Endless	5000	34,34	21,13	59' 5"	6945	100x92x39
A6	-	Endless	5000	34,34	21,13	66' 7"	7175	100x92x39
A7	-	Endless	5000	34,34	21,13	73' 10"	7440	100x92x42
A8	-	Endless	5000	34,34	21,13	81' 4"	7640	100x92x42
A4J3	-	Endless	5150	34,34	21,13	79' 1"	8125	101x107x44
A5J3	-	Endless	5070	34,34	21,13	84' 0"	8025	101x103x44
A6J2	-	Endless	5070	34,34	21,13	85' 0"	7780	101x102x44

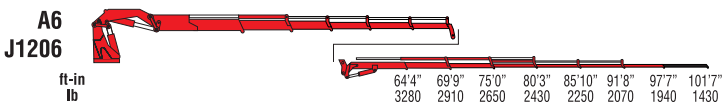
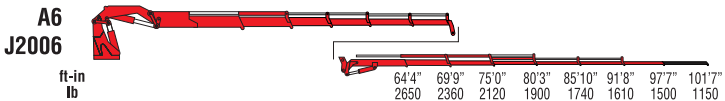
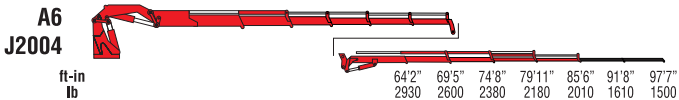
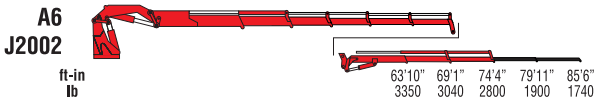
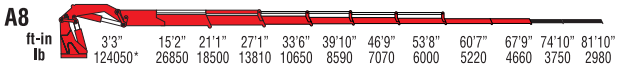
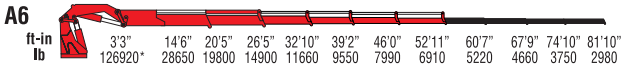




*) theoretical lifting capacity

MODELS	LIFTING MOMENT	SLEWING ANGLE	WORKING PRESSURE	OIL TANK CAPACITY	MAX OIL FLOW	MAX. VERTICAL REACH (HYDR.)	CRANE WEIGHT (STAB. STANDARD)	DIMENSIONS
	lb-ft							
A2	415900	Endless	4860	66,00	26,42	39' 1"	11465	100x96x59
A4	-	Endless	4860	66,00	26,42	52' 2"	12745	100x96x59
A6	-	Endless	4860	66,00	26,42	66' 7"	13935	100x96x59
A8	-	Endless	4860	79,20	26,42	81' 0"	14880	101x96x65
A6J2002	-	Endless	-	66,0/79,2	26,42	87' 3"	16690	101x108x66
A6J2004	-	Endless	-	66,0/79,2	26,42	98' 9"	17165	101x108x66
A6J2006	-	Endless	-	66,0/79,2	26,42	110' 11"	17540	101x108x66
A6J1206	-	Endless	-	66,0/79,2	26,42	110' 11"	16875	101x110x66





*) theoretical lifting capacity

MODELS	LIFTING MOMENT	SLEWING ANGLE	WORKING PRESSURE	OIL TANK CAPACITY	MAX OIL FLOW	MAX. VERTICAL REACH (HYDR.)	CRANE WEIGHT (STAB. STANDARD)	DIMENSIONS
	lb-ft	°	psi	Gal	gpm	ft. in.	lb	in WxHxD
A2	457100	Endless	5290	66,00	26,42	39' 1"	11850	100x96x59
A4	-	Endless	5290	66,00	26,42	52' 2"	13095	100x96x59
A6	-	Endless	5290	66,00	26,42	66' 7"	14255	100x96x59
A8	-	Endless	5290	79,20	26,42	81' 0"	15155	101x96x65
A6J2002	-	Endless	-	66,0/79,2	26,42	87' 3"	16690	101x108x66
A6J2004	-	Endless	-	66,0/79,2	26,42	98' 9"	17165	101x108x66
A6J2006	-	Endless	-	66,0/79,2	26,42	110' 11"	17540	101x108x66
A6J1206	-	Endless	-	66,0/79,2	26,42	110' 11"	16875	101x110x66



900 Series

***Endless slewing
with double linkage***

980

990R





A2
 ft-in 9'10" 13'7" 19'2" 25'1"
 lb 51320* 36330 26100 20130

A4
 ft-in 9'10" 13'10" 19'6" 25'5" 31'8" 37'11"
 lb 48720* 34630 24560 18650 14840 12320

A6
 ft-in 9'10" 14'4" 20'0" 25'10" 32'2" 38'5" 44'11" 51'6" 58'1" 64'8" 72'6"
 lb 47270* 32450 22840 17060 13360 11000 9220 7980 5970 5310 3880

A8
 ft-in 9'10" 14'4" 20'0" 25'10" 32'2" 38'5" 44'11" 51'6" 58'1" 64'8" 72'6" 79'7" 87'3"
 lb 45990* 31570 21960 16120 12350 9880 8110 6860 5970 5310 3880 3530 2780

A10
 ft-in 9'10" 15'3" 20'10" 26'9" 33'2" 39'2" 45'9" 52'4" 58'11" 65'5" 72'6" 79'7" 87'3"
 lb 45550* 29390 20370 14900 11270 8880 7140 5930 5090 4430 3880 3530 2780

A6J6
 ft-in 62'0" 67'3" 72'8" 78'1" 83'8" 89'7" 95'6" 101'5"
 lb 3540 3100 2770 2470 2250 2070 1870 1280

*) Theoretical lifting capacity

MODELS	LIFTING MOMENT	SLEWING ANGLE	WORKING PRESSURE	OIL TANK CAPACITY	MAX OIL FLOW	MAX. VERTICAL REACH (HYDR.)	CRANE WEIGHT (STAB. STANDARD)	DIMENSIONS
	lb-ft							
A2	504900	420	4280	73,97	21,13	39' 8"	16420	100x97x62
A4	-	420	4280	73,97	21,13	52' 6"	17860	100x97x62
A6	-	420	4280	73,97	21,13	65' 11"	19180	100x97x68
A8	-	420	4280	73,97	21,13	79' 5"	20390	100x99x69
A10	-	420	4280	73,97	21,13	94' 6"	21270	100x104x69
A6J6	-	420	4280	73,97	21,13	109' 11"	22490	100x111x73





990R



A2
ft-in 9'10" 13'7" 19'2" 25'1"
lb 54370* 38600 27800 21320

A4
ft-in 9'10" 13'10" 19'6" 25'5" 31'8" 37'11"
lb 51650* 36670 26050 19690 15610 12940

A6
ft-in 9'10" 14'4" 20'0" 25'10" 32'2" 38'5" 44'11" 51'6" 58'1" 64'8" 72'6"
lb 49760* 34160 24200 18190 14130 11550 9720 8420 6400 5710 4280

A8
ft-in 9'10" 14'4" 20'0" 25'10" 32'2" 38'5" 44'11" 51'6" 58'1" 64'8" 72'6" 79'7" 87'3"
lb 48440* 33260 23180 17070 13140 10600 8700 7360 6400 5710 4280 3870 2990

A10
ft-in 9'10" 15'3" 20'10" 26'9" 33'2" 39'2" 45'9" 52'4" 58'11" 65'5" 72'6" 79'7" 87'3"
lb 47990* 30960 21610 15840 12020 9560 7770 6470 5510 4840 4280 3870 2880

A6J6
ft-in 62'0" 67'3" 72'8" 78'1" 83'8" 89'7" 95'6" 101'5"
lb 3760 3320 3010 2730 2490 2290 2030 1390

A8J4
ft-in 73'6" 79'1" 84'10" 90'7" 96'5" 102'8"
lb 2090 1870 1710 1570 1460 1210

*) Theoretical lifting capacity

MODELS	LIFTING MOMENT	SLEWING ANGLE	WORKING PRESSURE	OIL TANK CAPACITY	MAX OIL FLOW	MAX. VERTICAL REACH (HYDR.)	CRANE WEIGHT (STAB. STANDARD)	DIMENSIONS in WxHxD
	lb-ft	°	psi	Gal	gpm	ft. in.	lb	
A2	535200	Endless	4570	73,97	26,42	39' 8"	16420	100x97x62
A4	-	Endless	4570	73,97	26,42	52' 6"	17860	100x97x62
A6	-	Endless	4570	73,97	26,42	65' 11"	19180	100x97x68
A8	-	Endless	4570	73,97	26,42	79' 5"	20390	100x99x69
A10	-	Endless	4570	73,97	26,42	94' 6"	21270	100x104x69
A6J6	-	Endless	4570	73,97	26,42	109' 11"	22490	100x111x73
A8J4	-	Endless	4570	73,97	26,42	110' 11"	22270	101x114x73



NEW AGE

7000D
Series

Telescopic boom

7092D

7112D



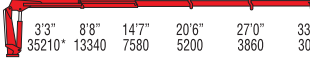
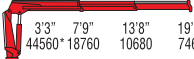
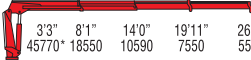

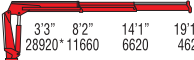


7130D

7162D

7212D

7240D

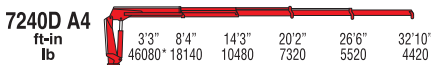
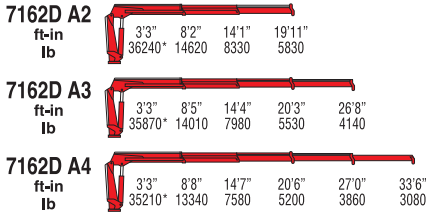


7162D A2	
ft-in	3'3" 8'2" 14'1" 19'11"
lb	36240* 14620 8330 5830
7162D A3	
ft-in	3'3" 8'5" 14'4" 20'3" 26'8"
lb	35870* 14010 7980 5530 4140
7162D A4	
ft-in	3'3" 8'8" 14'7" 20'6" 27'0" 33'6"
lb	35210* 13340 7580 5200 3860 3080
7212D A2	
ft-in	3'3" 7'9" 13'8" 19'7"
lb	44560* 18760 10680 7460
7212DA3	
ft-in	3'3" 8'1" 14'0" 19'11" 26'3"
lb	45770* 18550 10590 7550 5530
7212D A4	
ft-in	3'3" 8'4" 14'3" 20'2" 26'6" 32'10"
lb	5280* 17820 10380 7220 5410 4190
7130D A2	
ft-in	3'3" 8'2" 14'1" 19'11"
lb	28920* 11660 6620 4620
7130DA3	
ft-in	3'3" 8'5" 14'4" 20'3" 26'8"
lb	28590* 11170 6320 4350 3250
7130D A4	
ft-in	3'3" 8'8" 14'7" 20'6" 27'0" 33'6"
lb	28260* 10700 6030 4100 3030 2410

*) Theoretical lifting capacity

MODELS	LIFTING MOMENT	SLEWING ANGLE	WORKING PRESSURE	OIL TANK CAPACITY	MAX OIL FLOW	MAX. VERTICAL REACH (HYDR.)	CRANE WEIGHT (STAB. STANDARD)	DIMENSIONS
	lb-ft		psi					
7162D A2	118600	425	4200	34,34	15,85	32' 2"	3550	91x98x34
7162D A3	-	425	4200	34,34	15,85	38' 9"	3790	91x98x34
7162D A4	-	425	4200	34,34	15,85	45' 3"	3990	91x98x34
7212D A2	146100	415	4570	34,34	18,49	31' 10"	4290	99x95x35
7212D A3	-	415	4570	34,34	18,49	38' 5"	4610	99x95x35
7212D A4	-	415	4570	34,34	18,49	44' 11"	4870	101x95x35
7130D A2	94800	425	4130	34,34	15,85	32' 2"	3295	98x91x33
7130D A3	-	425	4130	34,34	15,85	38' 9"	3515	98x91x33
7130D A4	-	425	4130	34,34	15,85	45' 3"	3725	98x91x33





*) Theoretical lifting capacity

MODELS	LIFTING MOMENT	SLEWING ANGLE	WORKING PRESSURE	OIL TANK CAPACITY	MAX OIL FLOW	MAX. VERTICAL REACH (HYDR.)	CRANE WEIGHT (STAB. STANDARD)	DIMENSIONS
	tm	°	bar	l	l/min	m	kg	mm BxhxS
7162D A2	118600	425	4200	34,34	15,85	32' 2"	3570	98x91x34
7162D A3	-	425	4200	34,34	15,85	38' 9"	3825	98x91x34
7162D A4	-	425	4200	34,34	15,85	45' 3"	4025	98x91x34
7212D A2	146100	415	4570	34,34	18,49	31' 10"	4290	100x95x35
7212D A3	-	415	4570	34,34	18,49	38' 5"	4610	100x95x35
7212D A4	-	415	4570	34,34	18,49	44' 11"	4870	101x95x35
7212D A5	-	415	4350	34,34	18,49	51' 6"	5080	101x95x35
7240D A2	148300	415	4860	34,34	18,49	31' 10"	4290	100x95x35
7240D A3	-	415	4860	34,34	18,49	38' 5"	4610	100x95x35
7240D A4	-	415	4860	34,34	18,49	44' 11"	4870	101x95x35
7240D A5	-	415	4640	34,34	18,49	51' 6"	5080	101x95x35

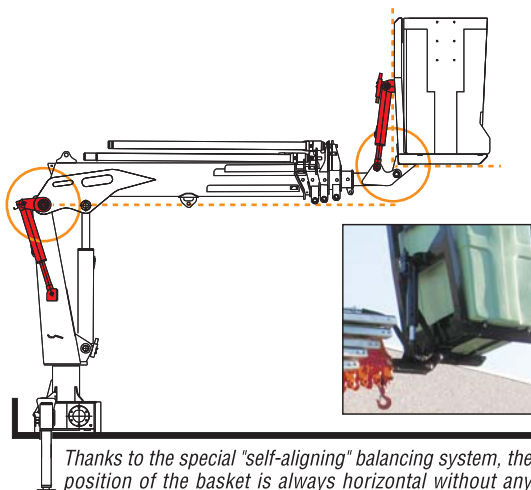


SKY

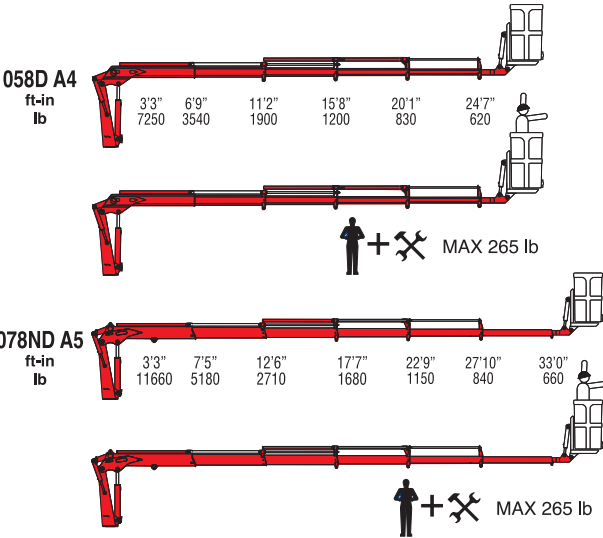
***Self-Aligning
basket***

058D

078ND



Thanks to the special "self-aligning" balancing system, the position of the basket is always horizontal without any intervention from the user.



MODELS	LIFTING MOMENT lb-ft	SLEWING ANGLE °	WORKING PRESSURE psi	OIL TANK CAPACITY Gal	MAX OIL FLOW gpm	MAX. VERTICAL REACH (HYDR.) ft. in.	CRANE WEIGHT (STAB. STANDARD) lb	DIMENSIONS in WxHxD
058D A4	23800	380	3190	9,25	3,96	43' 8"	2070	131x77x34
078D A5	38300	387	3190	9,25	4,76	52' 6"	2780	149x82x34



Features & Accessories



7000 - 9000 **NEW AGE**

New crane line sets new standards in design, performances, reliability and safety for truck mounted cranes.

A new control station, incorporating both crane and stabiliser controls, has an ergonomic working position and user-friendly interface which delivers better operator efficiency and safety together with improved productivity.

Dynamic Load Diagram allows advance verification of the crane lifting capacity based on the truck stability, and, Magic Touch allows automatic folding and unfolding to transport and working positions.

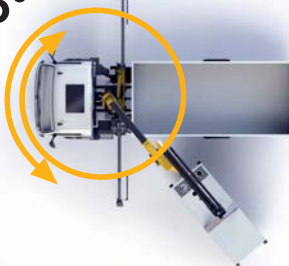
There are several options for radio remote control and a wide range of stabiliser configurations to ensure safe positioning of the truck in all ground conditions.

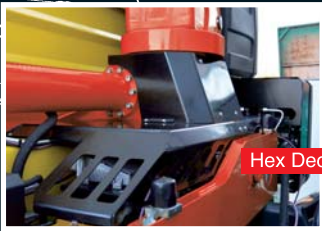


The wide slewing angle, 425°, is best-in-class for medium sized cranes. And, with an extensive range of accessories and attachments, the cranes are suited to a wide range of applications.

Durability and lifetime value too is high with enhanced resistance to adverse environmental conditions as a result of a long life painting process, anti-corrosion treatments on non-painted components, protected rubber hose tracks and assembly of components using specialist tools.

425°





Hex Deck cover on base

Functional aesthetic

NEW AGE



Robust structural design and hose covers.



High volume oil tank made in sandwich-structured materials.

1st layer, PEX

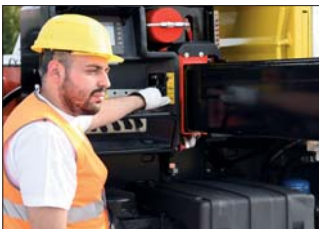
2nd layer, PA6



TOP 7" colour display

New control station

NEW AGE



The most ergonomic working position and user-friendly interface

Safe and fast stabilisation with outstanding supervision for operator.



LED lights on booms and controls for night working. (only CE radio configuration)



Magic Touch

NEW AGE



Focus on innovation

A graphic display which allows the driver, after truck stabilisation, to automatically fold (from any position to transport position) and unfold (to working position) when required. This easy-to-use function improves driver attention, promotes safe operation, saves time and can increase productivity.



Dynamic Load Diagram

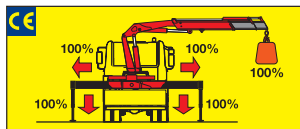


Focus on innovation

A new system which allows the driver to verify in advance the crane lifting capacity based on the truck stability. The operator can select the weight and, according to the stabiliser positions, the system calculates the stability all around the truck. A graphical display shows the outreach available for the load selected and the actual boom slewing position. This system, a first on truck-mounted articulated cranes, optimises stabilisation and makes crane operation safer and more efficient. Easy to use, saves time and improves safety through better crane stabilisation and avoidance of border line working conditions.

Stability control systems (CE)

FS System

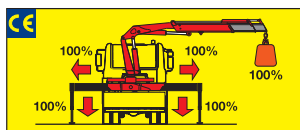


The **FS System** integrated in the load limiting device checks the stabilizers' positions. Only when all beams are fully open and all stabilizers are on the ground the crane can operate and lift loads.



Control display

FM System

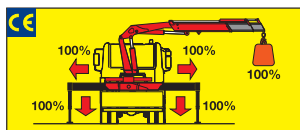


The **FM System** integrated in the load limiting device checks the stabilizers' positions. Only when all beams are fully open and all stabilizers are on the ground the crane can operate and lift loads.



Control display

FML System



The **FML System** integrated in the load limiting device checks the stabilizers' positions. Only when all beams are fully open and all stabilizers are on the ground the crane can operate and lift loads.

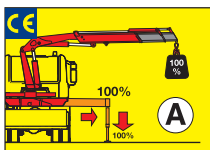


Control display



RADIOCONTROL

FL System

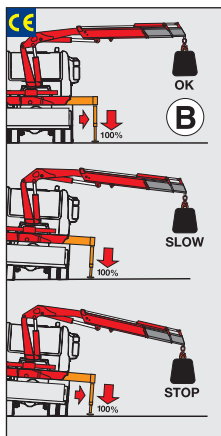


The **FL system** checks the stabilizers' positions and the truck's inclination.

According to the beams' positions, the system allows two operating modes:

Mode A - all beams fully open and all stabilizer feet on the ground.

Mode B - stabilizers on the ground only.



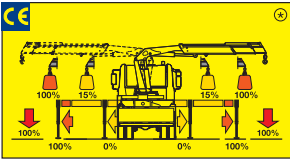
In **mode A**: the load limiting device stops the crane when the crane reaches 100% of the nominal capacity.

In **mode B**: a dedicated sensor monitors the truck's inclination. The load limiting device stops the crane before it reaches an inclination angle dangerous for stability, or when the crane reaches its nominal capacity.

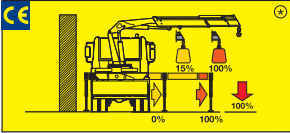


Control display

FXL System



The ECM monitors for 2 possible beam positions: fully open and not fully open. Depending on the position of the beams and the stabilizers, the crane's lifting capacity changes according to the setting made by the installer. The crane can be used even with a beam partially or fully retracted without having stability problems.



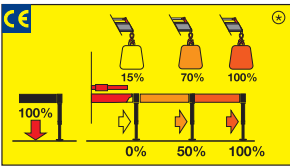
Optional **FRCS**

The Rotation Control Sensor constantly checks the slewing position of the crane and limits the lifting capacity depending on the beams' and the stabilizers' positions.



RADIOCONTROL

F2XL System



The ECM checks the positions of the stabilizers and divides the working area into 4 slewing sectors: over the cabin, right side, left side and the rear of the vehicle. Depending on the position of the beams and the stabilizers, the crane's lifting capacity changes according to the settings made by the installer. The crane can be used even with a beam partially or fully retracted without having stability problems.



The **FPES** (Proportional Encoder Sensor) recognizes 3 positions of the stabilizer's beams: fully open, half extended, fully closed.



The **FRCS** (Rotation Control Sensor) recognizes 4 slewing sectors.

The **CAN-BUS** radio-control allows the operator to know the positions of the stabilizers and the loading conditions of the crane.



With manual opening stabilizers, the F2XL System only recognizes completely open or completely closed beam positions.

⊙ The percentages present in the pictures are merely examples and they have no bearing on the crane's real lifting capacities. The crane's real lifting capacities will depend on the truck's stability.

Stability control systems (CE)

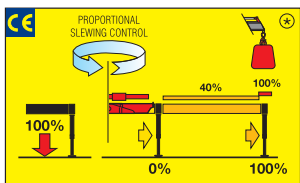
F3XL System



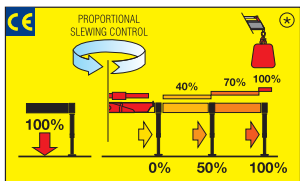
With a 3" TFT display and ergonomic keyboards, the operator can supervise the crane working and select the best parameters for effective use.

The F3XL system controls proportional slewing and the crane's stability, with 2-steps (F3XL₂) or 3-steps (F3XL₃) stabilizers outreach monitoring, depending by crane model and configuration.

NEW AGE



F3XL₂



F3XL₃

⊗ The percentages present in the pictures are merely examples and they have no bearing on the cranes' real lifting capacities. The cranes' real lifting capacities will depend on truck's stability.

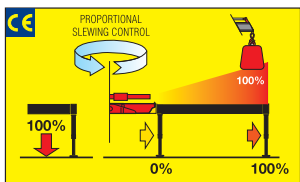
F4XL + TOP System



A 7" color display with integrated keyboard gives the operator a higher level of awareness of the crane operation and allows selection of the best parameters for effective use.

The system detects the exact position of the beams and proportionally calculates the stability.

NEW AGE



Models	STANDARD					RADIO				
	FS	FM	FXL	F2XL	F3XL	FML	FL	F2XL	F3XL	F4XL
310										
314										
315	•					•	OPT			
317	•					•	OPT			
321										
322	•					•	OPT			
326	•					•	OPT			
329										
330	•					•	OPT			
350	•					•	OPT			
531		OPT				OPT				
538		OPT				OPT				
540		OPT				OPT				
541		OPT				OPT				
550		•				•				
551		•				•	OPT			
561			•			•	OPT			
571			•			•	OPT			
581			•					•		
7090B					•				•	OPT
7091C					•				•	OPT
7091SC					•				•	OPT
7095C					•				•	OPT
7103C R									•	OPT
7111C					•				•	OPT
7111SC					•				•	OPT
7112B					•				•	OPT
7121C R									•	OPT
7125C									•	OPT
7130B					•				•	OPT
7131C					•				•	OPT
7131SC					•				•	OPT
7143C					•				•	OPT
7153C R									•	OPT
7160B					•				•	OPT
7161C					•				•	OPT
7161SC					•				•	OPT
7173C					•				•	OPT
7183C R									•	OPT
7210B					•				•	OPT
7213C					•				•	OPT
7213SC					•				•	OPT
7223C					•				•	OPT
7231C R									•	OPT
7240B					•				•	OPT
7243C					•				•	OPT
7243SC					•				•	OPT
7245C					•				•	OPT
7261C R									•	OPT

R = Radiocontrol SC = Short Crane ■ New Age

Models	STANDARD					RADIO				
	FS	FM	FXL	F2XL	F3XL	FML	FL	F2XL	F3XL	F4XL
729				•				•		
732				•				•		
732R SC								•		
736R								•		
736R SC								•		
745										
746R								•		
749R								•		
<hr/>										
■ 9235C R									•	OPT
■ 9265C R									•	OPT
■ 9601C R									•	OPT
■ 9661C R									•	OPT
980										
990R								•		
<hr/>										
■ 7092D					•				•	OPT
■ 7112D					•				•	OPT
■ 7130D					•				•	OPT
■ 7162D					•				•	OPT
■ 7212D					•				•	OPT
■ 7240D					•				•	OPT
<hr/>										
108										
128										
148										
178										
238										
248										
258										
268										
<hr/>										
058D A4										
078ND A5										

R = Radiocontrol SC = Short Crane ■ New Age

Radio remote control



Hetricon "Single Hand"



RADIOCONTROL



Scanreco

The operator can control the crane with high precision proportional levers in every position and, doing so, can supervise the loading and unloading operations.

That means a great time saving and a higher safety.



Hetricon Not CE

All the remote controls used by F.lli FERRARI have an identification code and are shielded from electromagnetic fields and from external radio signals.

The transmitter is equipped with a large display.

Watching this display the operator always knows the lifting condition of the crane and is informed about possible warning messages or alarm codes. The data displayed is an exact copy of the data present on the ECM. The transmitter is equipped with an ON-OFF switch in order to allow the user to engage the accessories (Winch, Grab/Rotator, Jib) without the necessity to use the buttons on the ECM. As on the standard transmitters, the CAN-Bus radio also allows control of the truck engine.



Hetricon CE Basic

Only the model 990R is standard equipped with CANBUS radio remote control on both CE and NO CE versions.



Hetricon CE Graphic



4" TFT HD-color display to keep the crane always under control

RDC

Innovative "Single Hand" radio remote control by Hetric

- Transmitter with compact dimensions and minimal weight
- Proportional speed control
- Single-hand control of every crane function by radio
- Safe stabilizer operation by radio control
- Cable control (optional)
- Transmitter operation with two 'AA' batteries.*



RADIOCONTROL

FUNCTION SELECTION

PROPORTIONAL SPEED CONTROL



(*)

HETRIC

A crane in the palm of your hand

Transmitter with compact dimensions and reduced weight



Receiver



Key selector box



Sectional electro-hydraulic control valve by Bosch Rexroth

Up to 2 extra activations for control of bucket and rotator or winch;

Proportional valve for the regulation of speed;

Manual levers for emergency use.



Visual, acoustic and luminous warning of 90% - 100% of the nominal capacity

With limiter device.



Visual signaling of the load (With limiter)

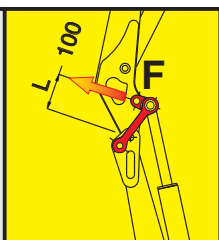
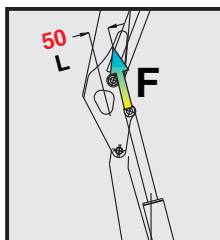
Digital readout in bar of the load induced pressure.



TWICE THE POWER*

STANDARD

RED POWER



$$\text{Power} = F \times L$$

F = Strength of the lifting cylinder

L = Lever of the lifting cylinder

POWER 50%

POWER 100%

"Red Power" means more leverage to the crane booms.
This leverage is achieved through an articulating connecting rod system.

**) In vertical position*

Constant capacity in all positions

"Red Power" brings more leverage to the crane booms and increases crane versatility for many working positions. The double linkage joins the articulation cylinder to the boom. Its design raises the mechanical advantage of the articulation, to provide consistent force through all working angles.



OFP

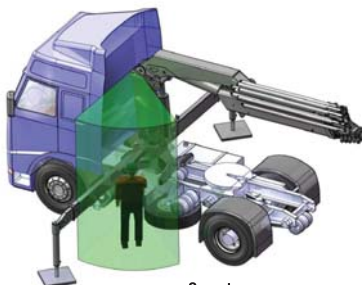
Operator Full Protection

"The green area surrounding the operator represents the space where the crane's boom cannot enter."

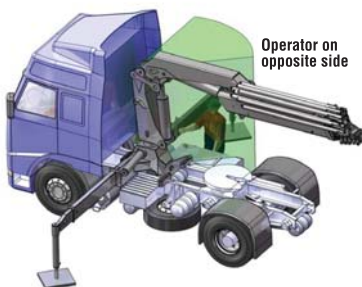
Our technical department developed a new safety system which monitors the control position where the operator is moving the crane, and prevents the crane's booms from entering the zone close to the operator.

Two presence sensors are mounted on the crane's control stations in order to verify where the operator is working, and other sensors monitor the control levers' positions. By sensors applied between the base and the column, the safety system can monitor the slewing sector where the crane is located. Two level sensors constantly monitor the position of the two booms.

Once the operator starts working from a control station, the Operator Full Protection System generates a limitation zone around him in order to avoid any interference between the operator and the crane.



Operator on control valve side



Operator on opposite side



This device shows the load at the hook on a display placed near the controls, making safe the use of the mechanical booms following the European rule EN12999. In case of a CE crane with mechanical booms it is mandatory to mount the RLC device.

Data, descriptions, and illustrations pertain only and uniquely to models sold at the time of printing of this brochure. After the date of printing, this information is purely indicative and not binding upon F.lli Ferrari. Future modifications are solely at the discretion of F.lli Ferrari and are always in compliance with applicable and pertinent safety standards. To obtain updated data, descriptions, and illustrations, contact the manufacturer or your reseller. Cranes manufactured and/or marketed by F.lli Ferrari.

F.lli Ferrari in the World



DEALER

FERRARI
PASSION FOR LIFTING

Via Einstein, 4
42028 Poviglio (RE) Italy
Tel. +39 0522/486308
Fax +39 0522/486330
info@flliferrari.it
marketing@flliferrari.it
www.flliferrari.com



ISO 9001 - ISO 14001