



Opus Art Supplies · Resources for the Creative Individual

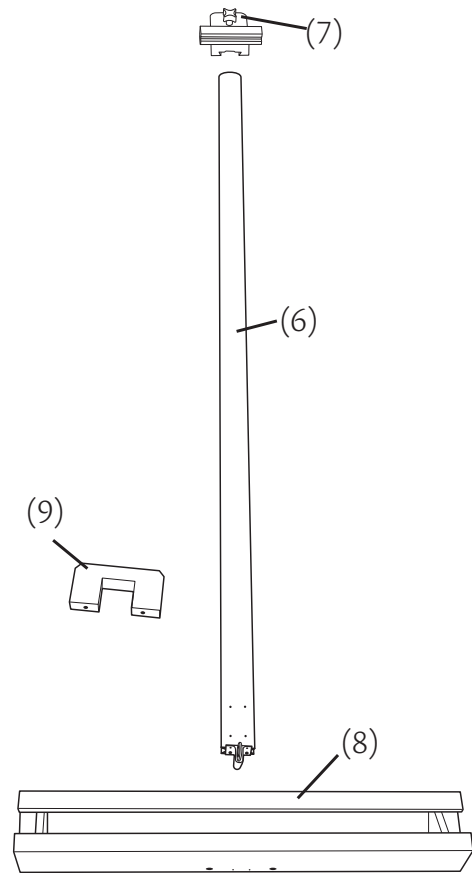
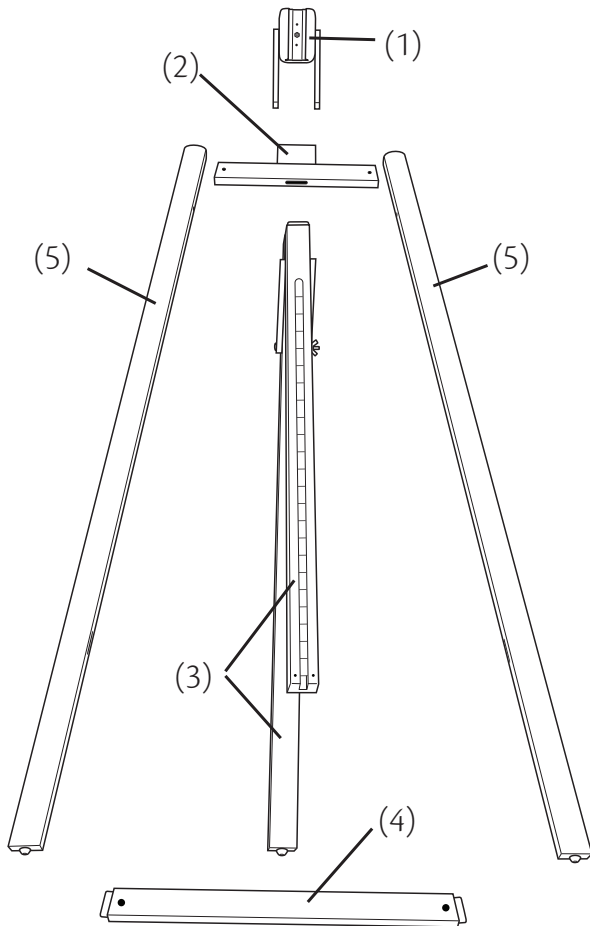
# Assembly Instructions - Athabasca Easel

## PARTS

- (1) Center Slide Post Support
- (2) Upper Cross Bar
- (3) Ratchet Post & Rear Leg Unit
- (4) Lower Cross Bar
- (5) Side Legs
- (6) Center Slide Post
- (7) Top Canvas Holder
- (8) Canvas Brush Tray
- (9) U-shaped Bar

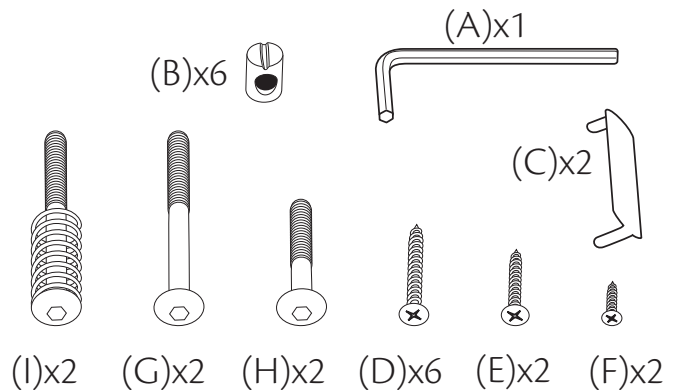
## YOU WILL ALSO NEED:

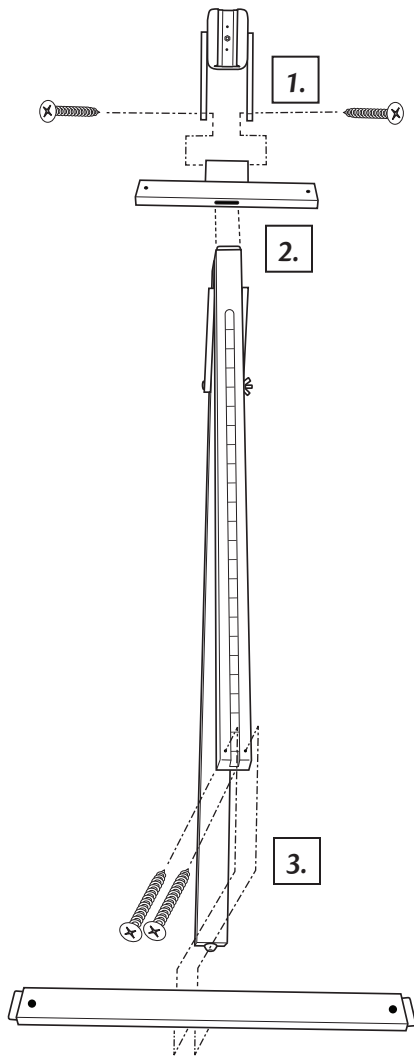
- Phillips Screwdrivers (+) 2 sizes
- Slot (Flat Head) Screwdriver (-)



## HARDWARE

- (A) Hex Wrench/Allen Key (1 pc)
- (B) Bolt Adapters (6 pc, 2 on U-Shaped Bar)
- (C) Metal guard (2 pc)
- (D) Large Screws (6 pc)
- (E) Medium Screws (2 pc)
- (F) Small Screws (2 pc)
- (G) Long Bolts (2 pc)
- (H) Short Bolts (2 pc)
- (I) Long Bolts with springs (2 pc, in U-Shaped Bar)





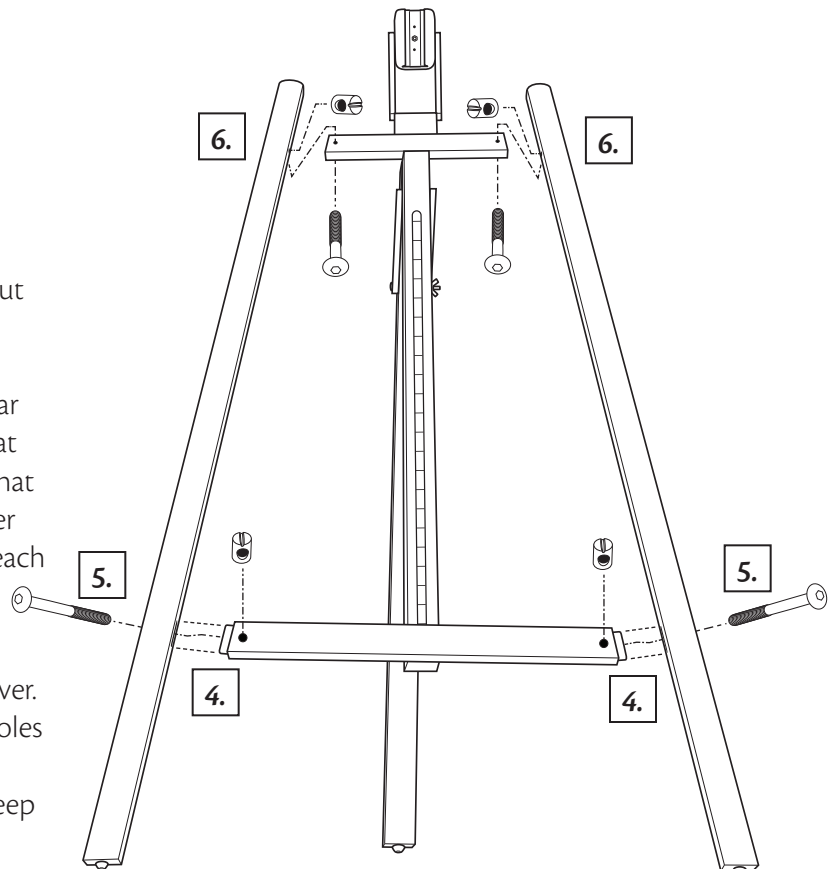
### Assembling The Support Frame:

**Tip:** We recommend assembling the easel entirely before tightening all of your hardware.

**Note:** To make assembly easy, the wood parts have pre-drilled holes for all the screws, bolts and bolt adapters.

1. Use the (E) 2 medium screws and the appropriate sized (+) Phillips screwdriver to screw on the two arms of the (1) Center Slide Post Support to the top protrusion of the (2) Upper Cross Bar.
2. Insert the tongue on top of the (3) Center Ratchet Post into the slot on the bottom of the (2) Upper Cross Bar.
3. Lift the leg of the (3) Ratchet Post & Rear Leg Unit and use two of the (D) large screws to screw the (4) Lower Cross Bar onto the bottom front of the (3) Ratchet Post. Make sure the (4) Lower Cross Bar is facing the right way, shorter edge towards the top.

**Note:** To make it easy to line up the holes, screw in the (D) 2 screws on the (3) Center Ratchet Post only, until the screw points are just poking out on the ratchet side (stair-like metal strip) and then place the (4) Lower Cross bar underneath, screw holes side up and align the holes. You should be able to feel when the points of the screws are in the holes of the (4) Lower Cross Bar.



4. Attach the (5) Side Legs to the (2,4) Cross Bars. Put the (2, 3, 4) Cross Bars and Center Ratchet Post Unit back leg side down/ratchet strip side up. Insert the tongues from the (4) Lower Cross Bar in the slots near the bottom edges of the (5) Side Legs. Make sure that the legs are in front of the (2) Upper Cross Bar and that the holes on the face, near the edges of the (2) Upper Cross Bar and near the top of the (5) Side Legs face each other.

5. Get the (G) 2 Long Bolts, 2 of the (B) Bolt Adapters, the (A) Hex Wrench and the slot screwdriver. Put the (B) Bolt Adapters, slot out, into the 2 large holes on the front of the (4) Lower Cross Bar near the (5) Side Legs. Put your finger underneath the holes to keep

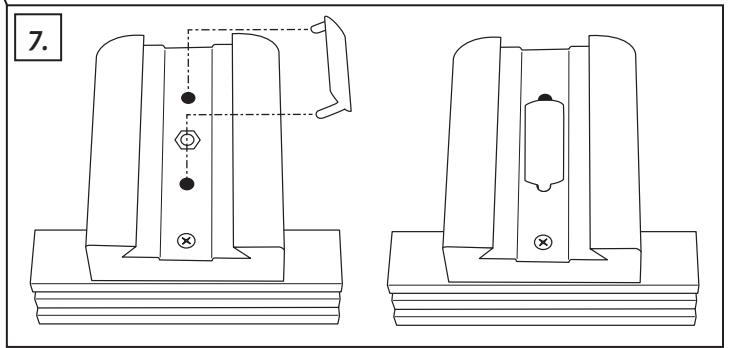
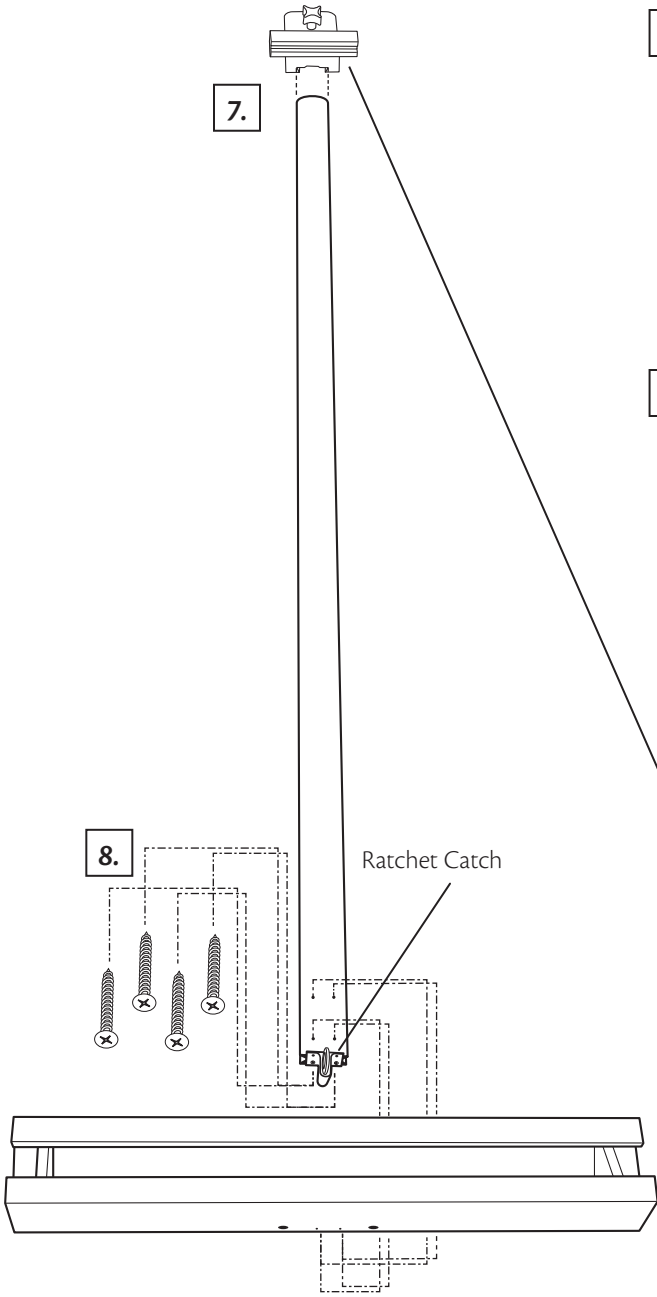
the (B) Adapter in place. Put the (G) Long Bolts into the aligning holes on the sides of the (5) Side Legs. Use your (-) Slot Screwdriver to turn the (B) Adapters so that the slot lines up with the direction of the (G) Bolts. Use the (A) Hex Wrench to screw in the Bolts into the Bolt adapters and loosely tighten.

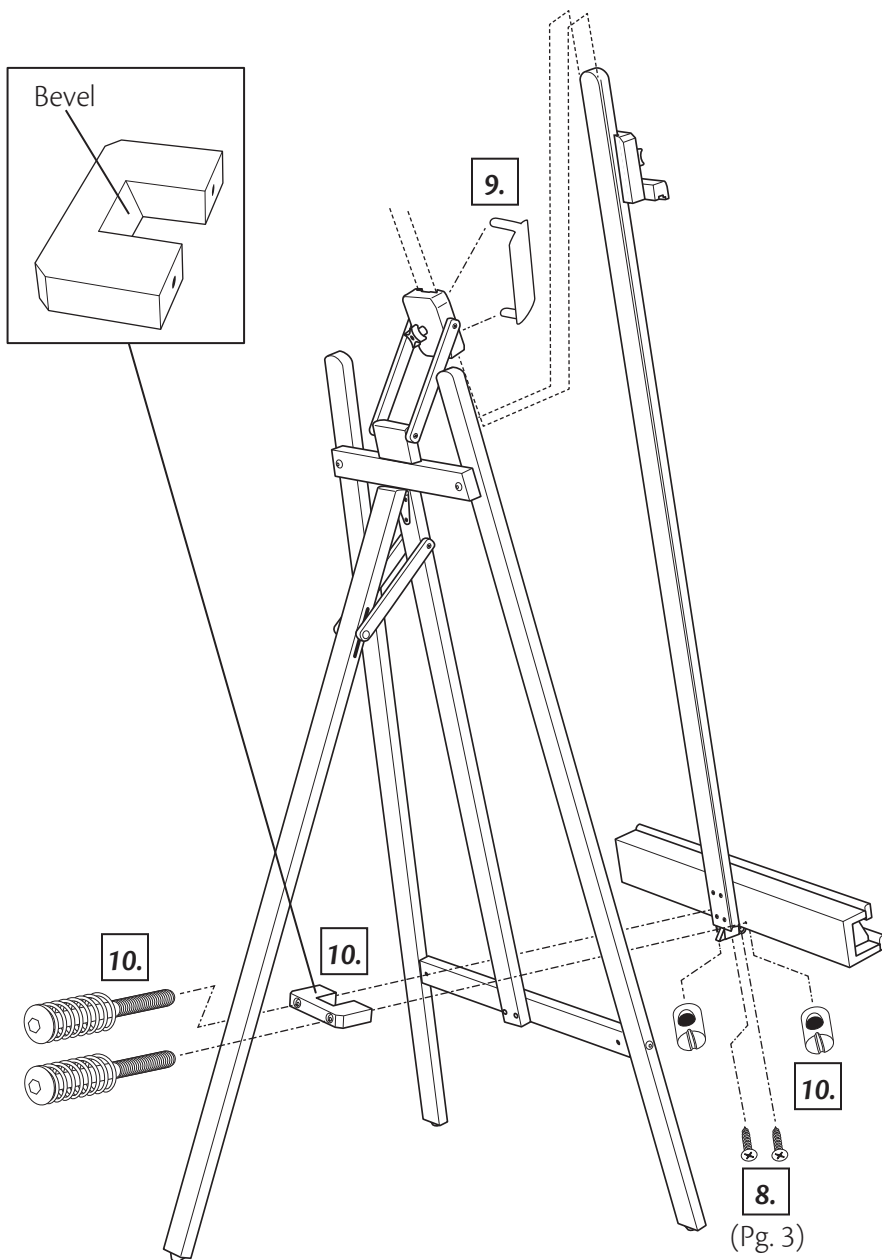
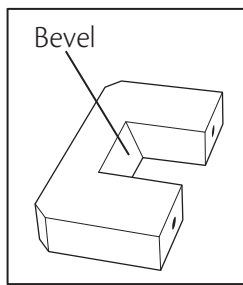
**6.** Get the (H) 2 Short Bolts, 2 of the (B) Bolt Adapters, the (A) Hex Wrench and the slot screwdriver. To attach the (2) Upper Cross Bar to the (5) Side Legs place the 2 (B) Bolt adapters into the holes on the inside edge of the (5) Side Legs directly above the (2) Upper Cross Bar. The (H) 2 Short Bolts go in the back of the (2) Upper Cross Bar. Proceed to tighten as in previous step.

**Assembling the Canvas Support:**

**7.** Unscrew the knob on the (7) Top Canvas Holder so that the knob bolt is flush on the other side. Place a (C) Metal Guard into the channel side of the (7) Top Canvas Holder. The two tabs of the (C) Metal Guard fit into the two holes above and below the imbedded nut. Making sure the (C) Guard does not fall out, feed the flared in channel of the (C) Guard onto the flared out rail of the (7) Canvas Holder on the same side as the (6) Center Slide Post. Tighten knob on the (7) Top Canvas Holder to fix in place and loosen to move up and down.

**8.** Insert the bottom of the (6) Center Slide Post into the groove provided on the back of the (8) Canvas Brush Tray. Make sure all the holes are aligned (you can use the method described previously), including the two screw holes on the bottom of the (8) Tray for the Ratchet Catch (½ of the catch is already attached to the bottom of the (6) Center Slide Post.) Use the last 4 (D) Large Screws to attach the (6) Post to the back of the (8) Tray, and the (F) 2 Small Screws to attach the Ratchet Catch to the bottom of the (8) Tray (Pg. 4 image).





(I) Bolts go in the back of the (9) U-Shaped Bar and through the holes at the back of the (8) Tray. You may need to push with the Hex Wrench to compress the springs enough to be able to screw the (I) Bolts in. Make sure you make the same number of turns on both the (I) Bolts so that you have the same amount of tension on each side. You should be able to pull the (9) U-Shaped Bar away a little so that it springs back against the (3) Ratchet Post when let go. This gives the Canvas Support some leeway for when it is put in its forward position.

**11.** Tighten up the rest of the screws and bolts, stand your new easel up, extend the back leg and get painting.

### Putting it all together:

**9.** Just like the for the (7) Top Canvas Holder, place the last (C) Metal Guard in the flared in channel of the (1) Center Slide Post Support. Then feed the flared in channel onto the back side of the flared out rail of the (6) Center Slide Post (opposite side than the (7) Top Canvas Holder. Don't worry they will slide past each other.)

**10.** Lay the Easel on it's front, careful that the Canvas support does not twist but stays in line with the (3) Ratchet Post. The (9) U-Shaped Bar goes around the (3) Ratchet Post and attaches to the back of the (8) Canvas Brush Tray by the (I) 2 Long Bolts with Springs (should already be in the (9) U-Shaped Bar) and 2 (B) Bolt Adapters. Make sure the bevel on the inside of the (9) U-Shaped Bar bevels up and away from the (3) Ratchet Post (smaller opening on the bottom.) The (B) Adapters go into the holes on the bottom of the (8) Canvas Brush Tray. The

