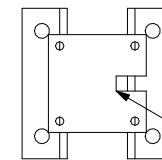
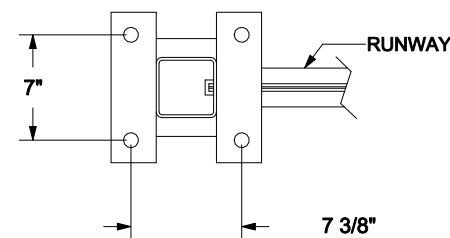


COLUMN TOP VIEW



WHEN INSTALLING COLUMNS
MAKE SURE SLOTS IN
UPPER PLATE FACE EACH
OTHER ALONG RUNWAY.

COLUMN BOTTOM VIEW



- 1) USE 3/4" ANCHOR BOLTS
- 2) ANCHOR BOLTS MUST BE EMBEDDED AT LEAST 4" INTO THE FLOOR
- 3) HAVE A MINIMUM OF TWO THREADS ABOVE NUT
- 4) MAKE SURE COLUMN WELDMENTS ARE PLUMB
- 5) ATTACH RUNWAYS TO COLUMN HEADERS USING 1/2-13 1.5" LG. BOLTS
- 6) LEVEL RUNWAYS AND MAKE SURE THAT THEY ARE PARALLEL WITHIN $\pm .125"$

THIS DRAWING REPRESENTS A CONFIDENTIAL PROPRIETARY DESIGN ORIGINATED BY GORBEL INC. AND ALL DESIGN, MANUFACTURING, REPRODUCTION, USE, AND SALES RIGHTS REGARDING THE SAME ARE EXPRESSLY RESERVED. IT IS SUBMITTED UNDER A CONFIDENTIAL RELATIONSHIP FOR A SPECIFIC PURPOSE, AND THE RECIPIENT AGREES BY ACCEPTING THIS DRAWING NOT TO SUPPLY OR DISCLOSE ANY INFORMATION REGARDING IT TO ANY UNAUTHORIZED PERSON, OR TO INCORPORATE IN OTHER PROJECTS ANY SPECIAL FEATURES PECULIAR TO THIS DESIGN. ALL PATENT RIGHTS HERETO ARE EXPRESSLY RESERVED BY GORBEL INC., FISHERS, NY.

UNLESS OTHERWISE SPECIFIED

ALL DIMENSIONS ARE IN INCHES

BREAK ALL SHARP EDGES
.010 MAXIMUM

CONFORMANCE TO STANDARDS
ASME Y14.5M
ANSI/AWS D14.1

TOLERANCE

1/X \pm 1/16

.XX \pm .010

.XXX \pm .005

X° \pm 1°

QTY. 1

GORBEL

600 FISHERS RUN
P.O. BOX 593
FISHERS, NY 14453-0593

TITLE: GENERAL ARRANGEMENT

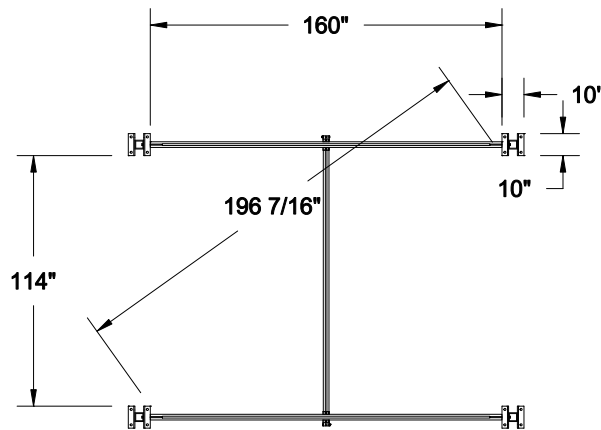
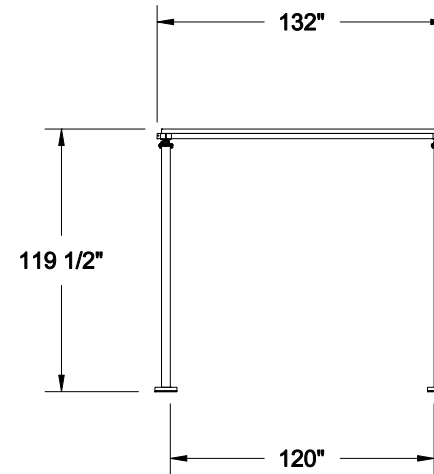
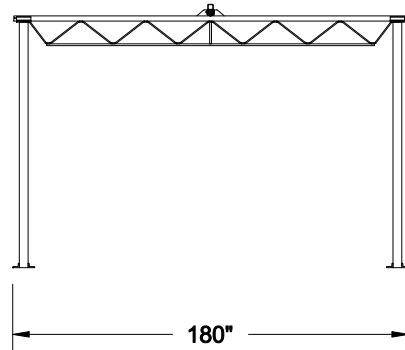
MAT'L: SUB - ASSEMBLY

DWN. BY GORBEL

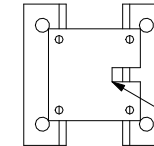
DATE: 7/21/2023

W.O.#

P/N: .0A

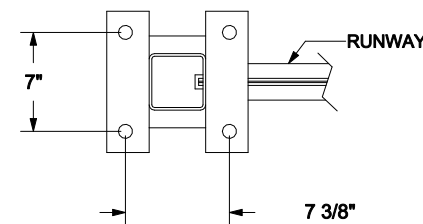


COLUMN TOP VIEW



WHEN INSTALLING COLUMNS
MAKE SURE SLOTS IN
UPPER PLATE FACE EACH
OTHER ALONG RUNWAY.

COLUMN BOTTOM
VIEW



- 1) USE 3/4" ANCHOR BOLTS
- 2) ANCHOR BOLTS MUST BE EMBEDDED AT LEAST 4" INTO THE FLOOR
- 3) HAVE A MINIMUM OF TWO THREADS ABOVE NUT
- 4) MAKE SURE COLUMN WELDMENTS ARE PLUMB
- 5) ATTACH RUNWAYS TO COLUMN HEADERS USING 1/2-13 1.5" LG. BOLTS
- 6) LEVEL RUNWAYS AND MAKE SURE THAT THEY ARE PARALLEL WITHIN $\pm .125"$

THIS DRAWING REPRESENTS A CONFIDENTIAL PROPRIETARY DESIGN ORIGINATED BY GORBEL INC. AND ALL DESIGN, MANUFACTURING, REPRODUCTION, USE, AND SALES RIGHTS REGARDING THE SAME ARE EXPRESSLY RESERVED. IT IS SUBMITTED UNDER A CONFIDENTIAL RELATIONSHIP FOR A SPECIFIC PURPOSE, AND THE RECIPIENT AGREES BY ACCEPTING THIS DRAWING NOT TO SUPPLY OR DISCLOSE ANY INFORMATION REGARDING IT TO ANY UNAUTHORIZED PERSON, OR TO INCORPORATE IN OTHER PROJECTS ANY SPECIAL FEATURES PECULIAR TO THIS DESIGN. ALL PATENT RIGHTS HERETO ARE EXPRESSLY RESERVED BY GORBEL INC., FISHERS, NY.

UNLESS OTHERWISE SPECIFIED

ALL DIMENSIONS ARE IN INCHES

BREAK ALL SHARP EDGES
.010 MAXIMUM

CONFORMANCE TO STANDARDS
ASME Y14.5M
ANSI/AWS D14.1

TOLERANCE

1/X \pm 1/16
.XX \pm .010
.XXX \pm .005
X° \pm 1°

QTY. 1

GORBEL

600 FISHERS RUN
P.O. BOX 593
FISHERS, NY 14453-0593

TITLE: GENERAL ARRANGEMENT

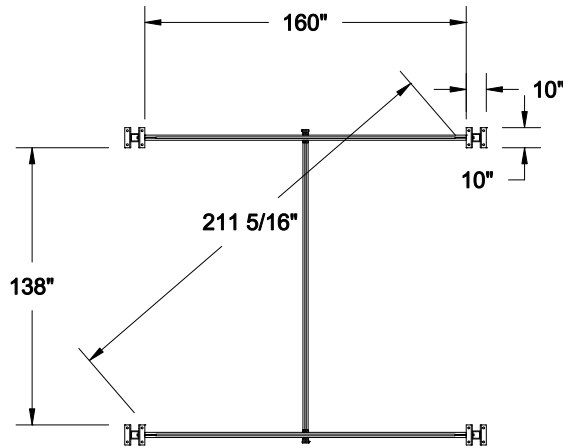
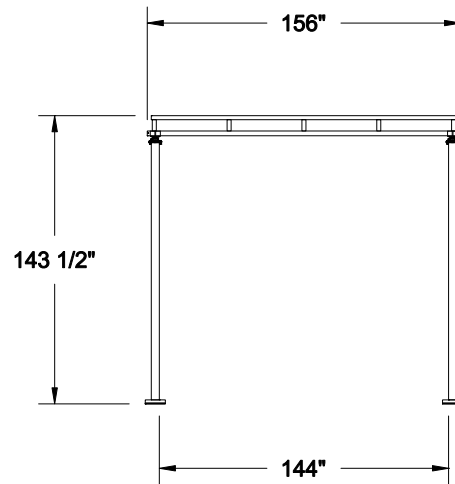
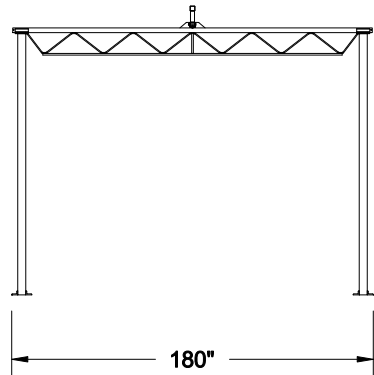
MAT'L: SUB - ASSEMBLY

DWN. BY GORBEL

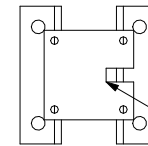
DATE: 7/21/2023

W.O.#

P/N: .0A

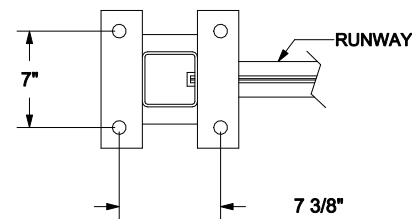


COLUMN TOP VIEW



WHEN INSTALLING COLUMNS
MAKE SURE SLOTS IN
UPPER PLATE FACE EACH
OTHER ALONG RUNWAY.

COLUMN BOTTOM
VIEW



- 1) USE 3/4" ANCHOR BOLTS
- 2) ANCHOR BOLTS MUST BE EMBEDDED AT LEAST 4" INTO THE FLOOR
- 3) HAVE A MINIMUM OF TWO THREADS ABOVE NUT
- 4) MAKE SURE COLUMN WELDMENTS ARE PLUMB
- 5) ATTACH RUNWAYS TO COLUMN HEADERS USING 1/2-13 1.5" LG. BOLTS
- 6) LEVEL RUNWAYS AND MAKE SURE THAT THEY ARE PARALLEL WITHIN $t.125"$

THIS DRAWING REPRESENTS A CONFIDENTIAL PROPRIETARY DESIGN ORIGINATED BY GORBEL INC. AND ALL DESIGN, MANUFACTURING, REPRODUCTION, USE, AND SALES RIGHTS REGARDING THE SAME ARE EXPRESSLY RESERVED. IT IS SUBMITTED UNDER A CONFIDENTIAL RELATIONSHIP FOR A SPECIFIC PURPOSE, AND THE RECIPIENT AGREES BY ACCEPTING THIS DRAWING NOT TO SUPPLY OR DISCLOSE ANY INFORMATION REGARDING IT TO ANY UNAUTHORIZED PERSON, OR TO INCORPORATE IN OTHER PROJECTS ANY SPECIAL FEATURES PECULIAR TO THIS DESIGN. ALL PATENT RIGHTS HERETO ARE EXPRESSLY RESERVED BY GORBEL INC., FISHERS, NY.

UNLESS OTHERWISE SPECIFIED

ALL DIMENSIONS ARE IN INCHES

BREAK ALL SHARP EDGES
.010 MAXIMUM

CONFORMANCE TO STANDARDS
ASME Y14.5M
ANSI/AWS D14.1

TOLERANCE

1/X \pm 1/16
.XX \pm .010
.XXX \pm .005
X° \pm 1°

QTY. 1

GORBEL

600 FISHERS RUN
P.O. BOX 593
FISHERS, NY 14453-0593

TITLE: GENERAL ARRANGEMENT

MAT'L: SUB - ASSEMBLY

DWN. BY GORBEL

DATE: 7/21/2023

W.O.#

P/N: .0A