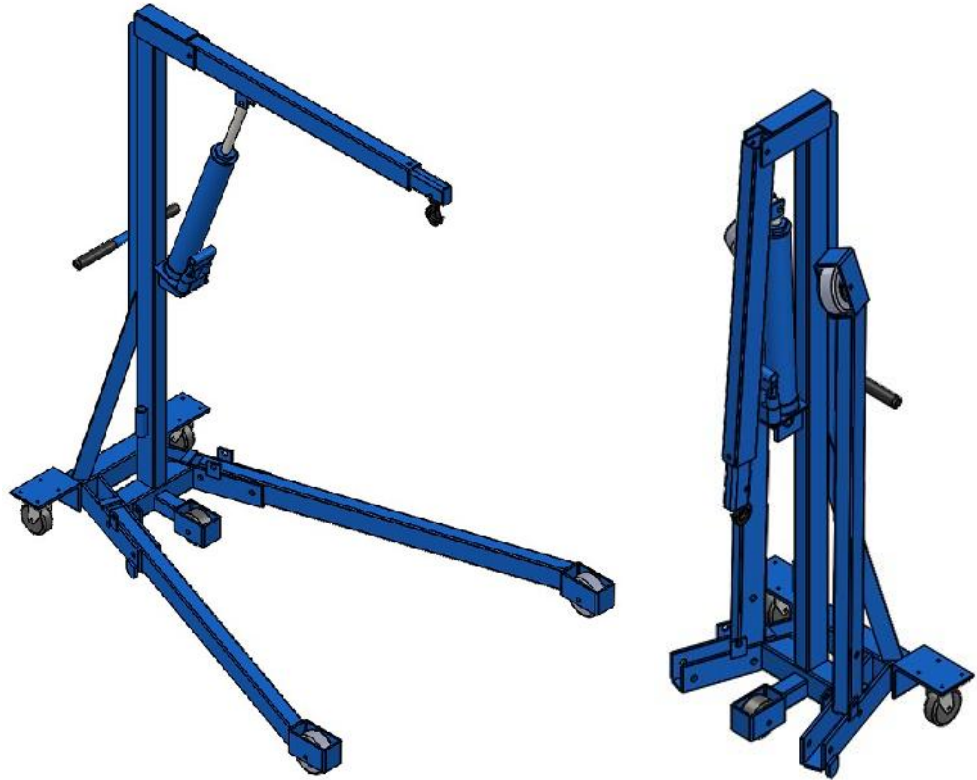


# RUGER MODEL: RC1000K



## **RC1000K**

### **Standard Features:**

- 1,000 lbs maximum rated capacity
- Foldable crane allowing more compact storage
- Meets Ruger's structural engineering standards for 150% rated lifting capacity
- Straddle style legs and built to exceed 125% stability
- Meets ASME PALD standards for shop cranes
- Conforms to ANSI Z535 standards
- Double piston manual hydraulic jack
- Built-in hydraulic pressure relief valve
- Adjustable telescopic boom
- Phenolic wheels with sleeve bearings
- Swivel hook with safety latch
- Steel construction and standard Ruger blue paint

### **Optional Accessories:**

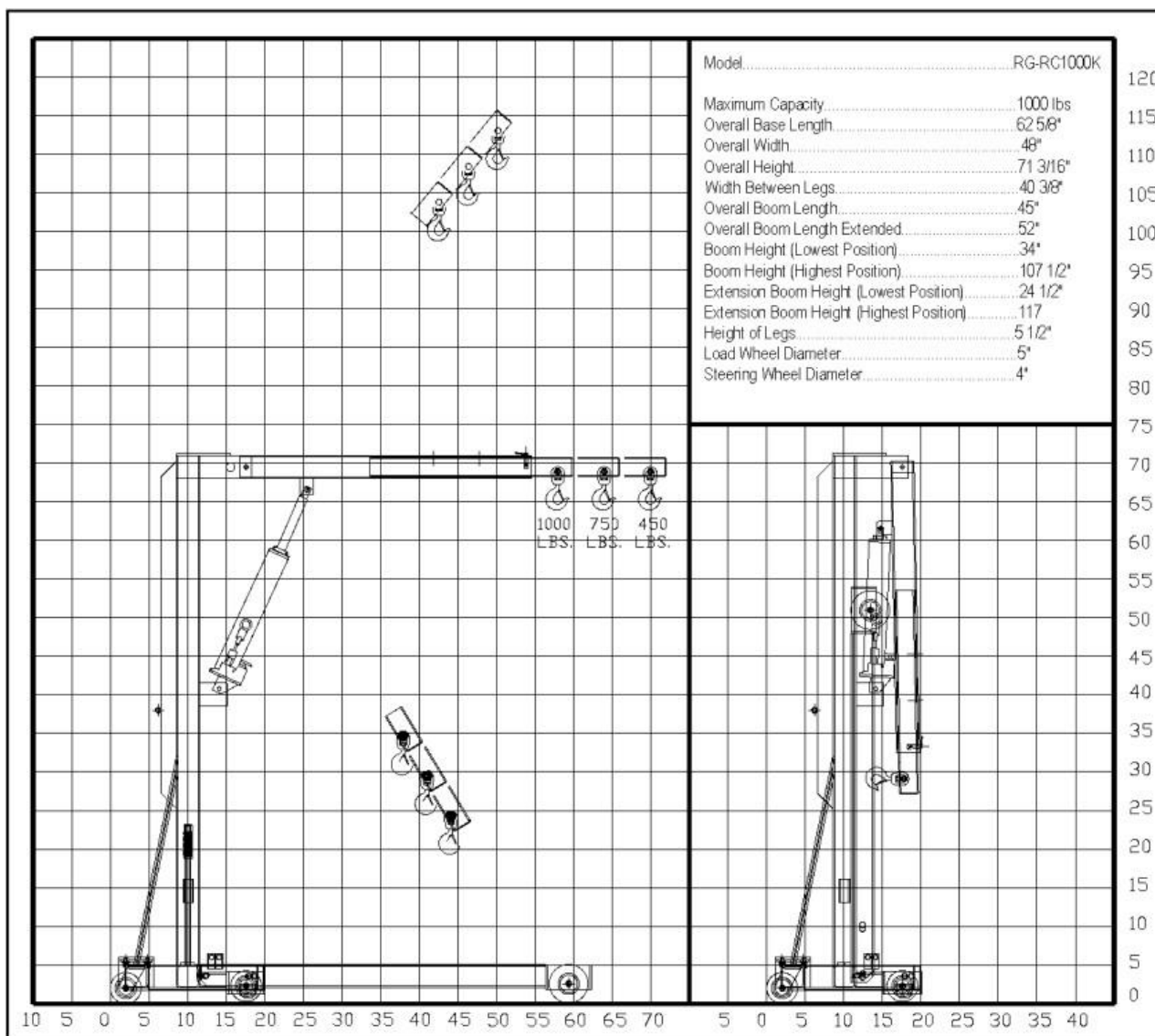
- Bolt on floor lock kit
- Polyurethane Wheels – Direct Bolt on
- Solid Elastomer Wheels - Direct Bolt on

The David Round Company - Ruger Division - 10200 Wellman Rd - Streetsboro, OH 44241  
Phone: 330-656-1600 - Fax: 330-656-1601 - [info@davidround.com](mailto:info@davidround.com) - [www.rugerindustries.com](http://www.rugerindustries.com)

# RUGER MODEL: RC1000K



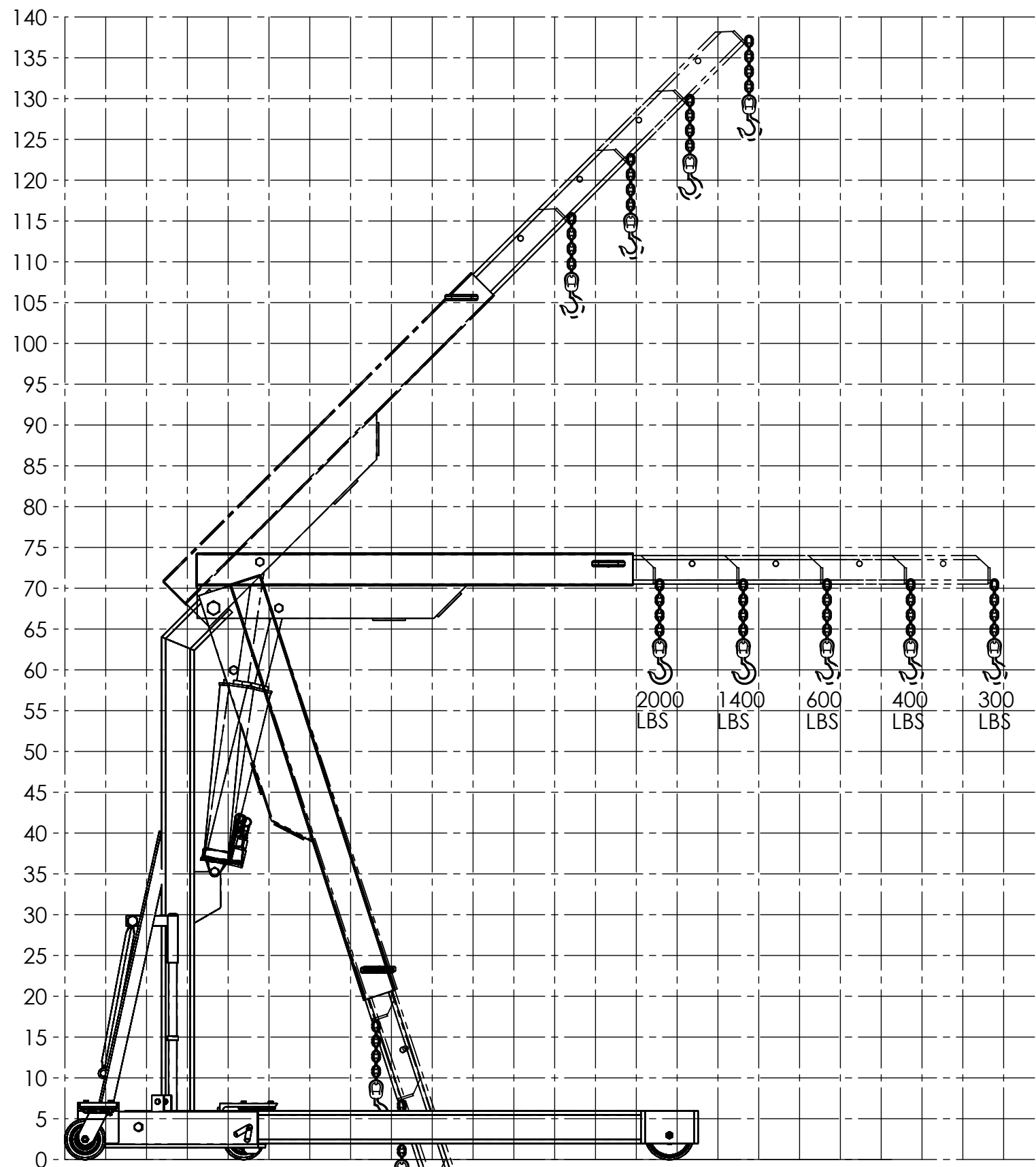
*Designers & Manufacturers of Hydraulic Load Lifting and Material Handling Equipment*



The David Round Company - Ruger Division - 10200 Wellman Rd - Streetsboro, OH 44241  
 Phone: 330-656-1600 - Fax: 330-656-1601 - [info@davidround.com](mailto:info@davidround.com) - [www.rugerindustries.com](http://www.rugerindustries.com)

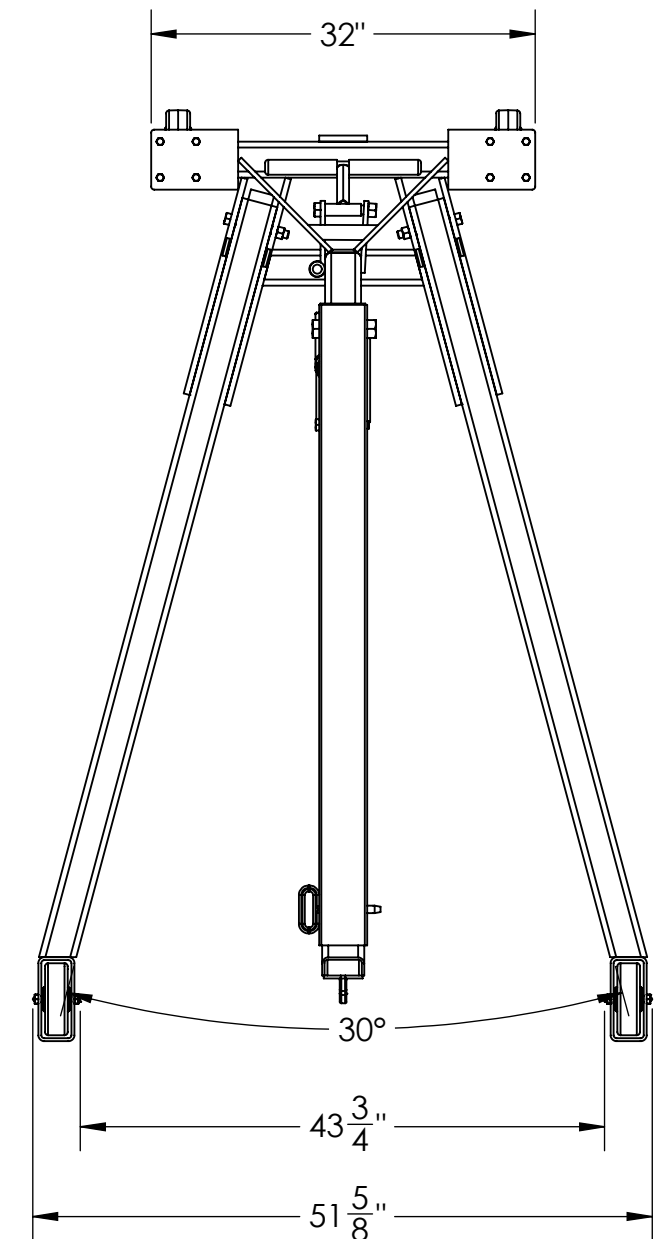
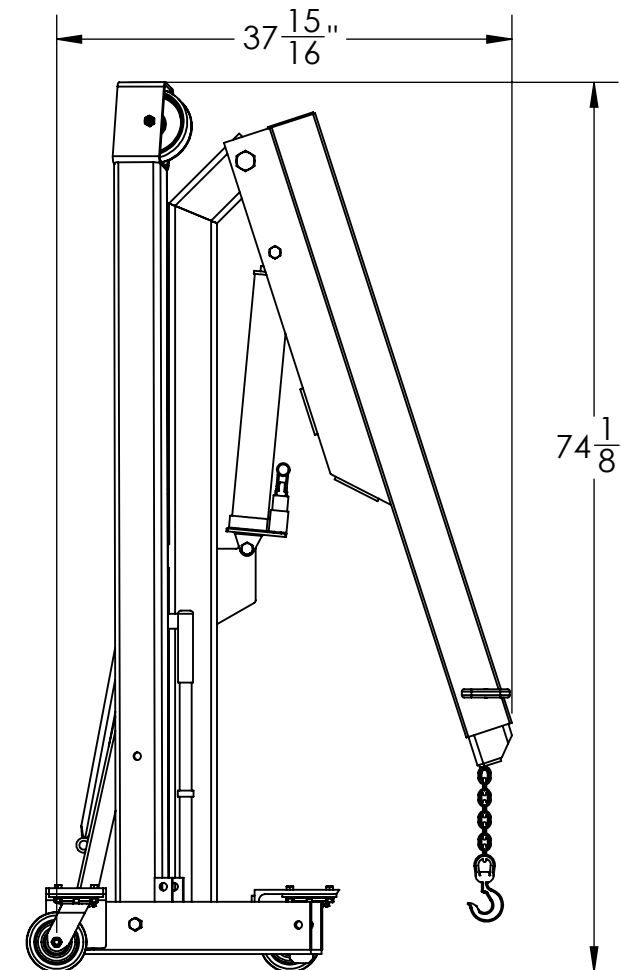
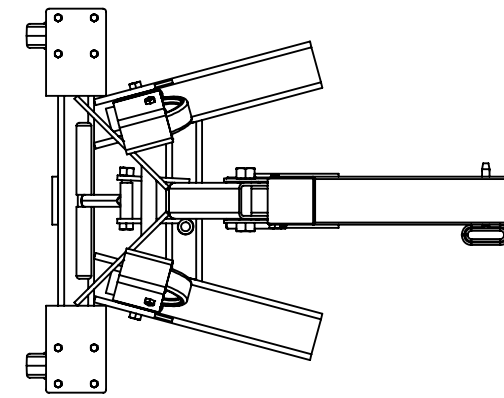
Prices, specifications, and options are subject to change without notice. All Ruger products are shipped F.O.B. Streetsboro, OH 44241

Copyright 2011



THE DAVID ROUND COMPANY  
10200 WELLMAN ROAD  
STREETSBORO, OHIO 44241  
330-656-1600  
WWW.RUGEREQUIPMENT.COM

# Ruger®



## RG-RC2000K

- COMPACT DESIGN TO WORK IN CLOSE QUARTERS
- EASY TO DISASSEMBLE FOR STORAGE IN SMALL AREAS
- MEETS RUGER'S STRUCTURAL ENGINEERING STANDARDS FOR 150% OF NORMAL LIFTING CAPACITY
- COMPLETELY SELF-CONTAINED HYDRAULIC SYSTEM WITH SINGLE ACTING JACK
- STANDARD ADJUSTABLE TELESCOPIC BOOM
- PHENOLIC WHEELS

