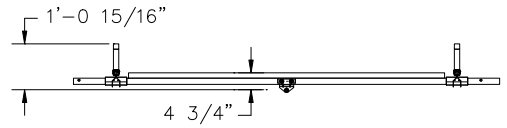
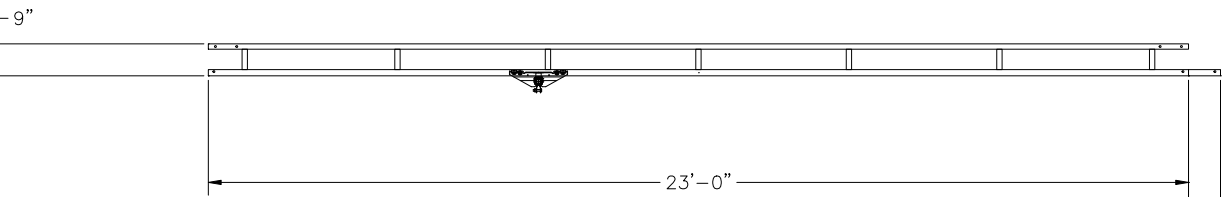
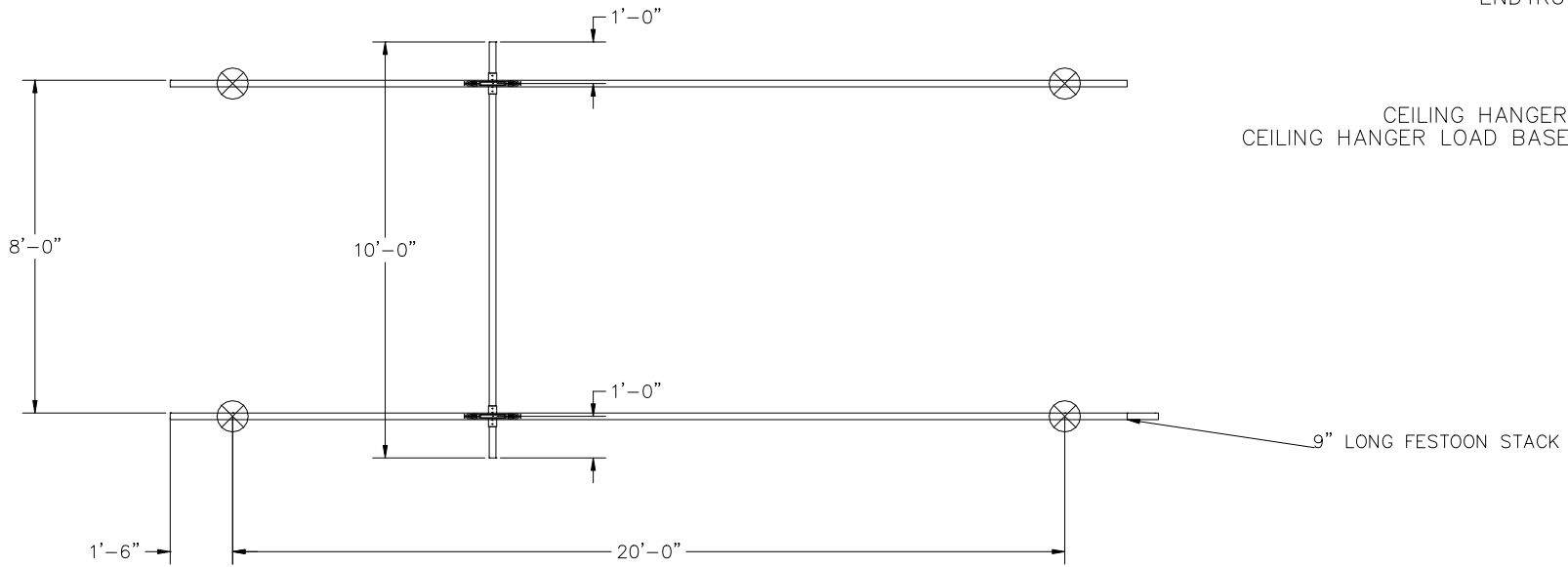


CONFIDENTIAL

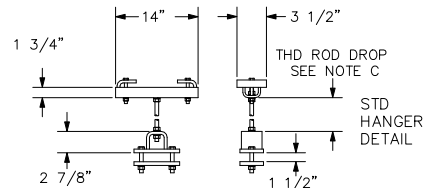
SWAY BRACING IS REQUIRED., REFER TO MANUAL.  
 HANGER DETAIL SHOWN IS OUR STANDARD DESIGN AND MAY NOT  
 REPRESENT THE ACTUAL HANGER DESIGN UTILIZED ON THIS SYSTEM.

NOTE C: MINIMUM THD ROD DROP MUST MAINTAIN 3" OF  
 CLEARANCE BETWEEN BRIDGE AND LOWEST OBSTRUCTION.  
 BRIDGE TROLLEY TRAVEL IS 8'-10 5/8"  
 ENDTRUCK TRAVEL IS 21'-2 1/2"

CEILING HANGER LOAD AS CONFIGURED: 440 LBS  
 CEILING HANGER LOAD BASED ON RUNWAY SERIES AT CAPACITY: 440 LBS



HANGERS ARE ON 20' CENTERS MAXIMUM WITH A  
 48" CANTILEVER ON EACH END STANDARD.  
 X = HANGER POINT  
 HANGER POSITION TOLERANCE = +/- 3 1/2"  
 HANGERS MUST BE WITHIN 48" OF SPLICE JOINT  
 DO NOT SCALE FROM DRAWING.  
 DIMENSIONS ARE STEEL TO STEEL AND MAY VARY.



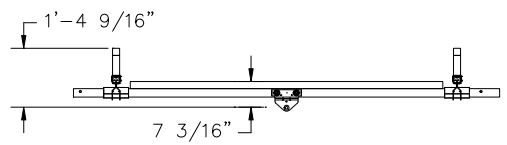
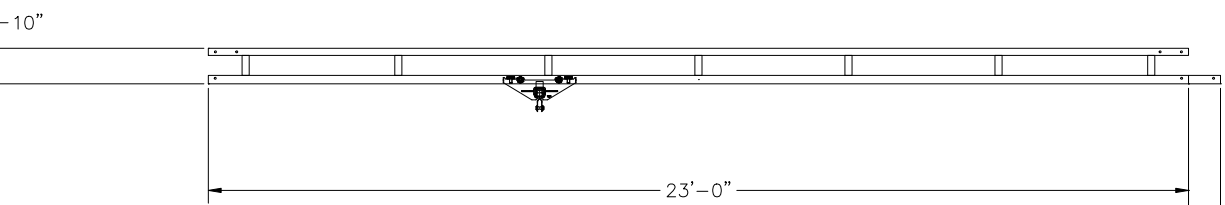
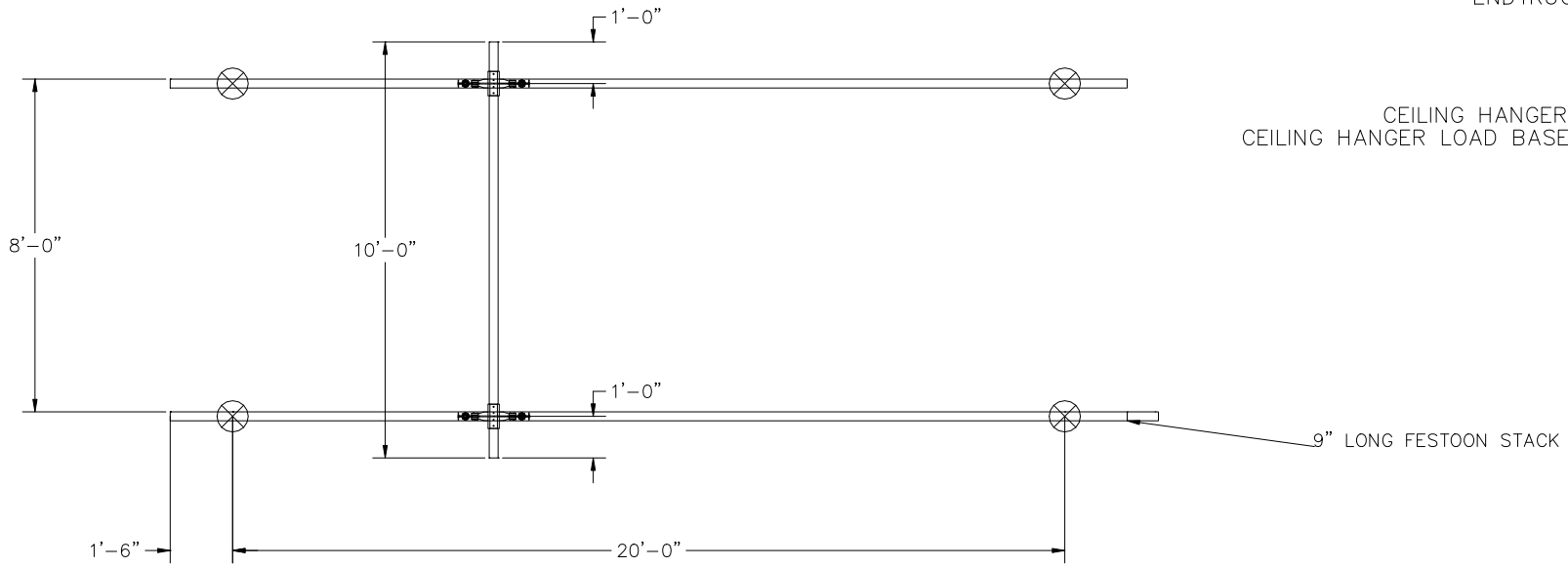
CRANE INFORMATION		<b>GORBEL</b> 600 FISHERS RUN P.O. BOX 593 FISHERS, NY 14453-0593	
CAPACITY: 250 LBS/BR BRIDGE OAL: 10' BRIDGE SERIES: 250 RUNWAY OAL: 23' RUNWAY SERIES: 250			
TOLERANCE: ±1/8		BY: GORBEL	DATE: JUL 21, 2023
QUANTITY: 1		LINE #:0	P/N:ANTSMI00006.0A
GLCS250-10-23			
BOHL CRANE INC			

CONFIDENTIAL


SWAY BRACING IS REQUIRED., REFER TO MANUAL.  
 HANGER DETAIL SHOWN IS OUR STANDARD DESIGN AND MAY NOT  
 REPRESENT THE ACTUAL HANGER DESIGN UTILIZED ON THIS SYSTEM.

NOTE C: MINIMUM THD ROD DROP MUST MAINTAIN 3" OF  
 CLEARANCE BETWEEN BRIDGE AND LOWEST OBSTRUCTION.  
 BRIDGE TROLLEY TRAVEL IS 8'-6 1/4"  
 ENDRUCK TRAVEL IS 20'-9 7/16"

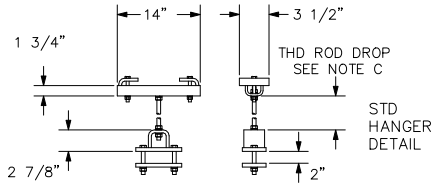
CEILING HANGER LOAD AS CONFIGURED: 838 LBS  
 CEILING HANGER LOAD BASED ON RUNWAY SERIES AT CAPACITY: 838 LBS



CRANE INFORMATION	
CAPACITY: 500 LBS/BR	
BRIDGE OAL: 10'	
BRIDGE SERIES: 500	
RUNWAY OAL: 23'	
RUNWAY SERIES: 500	
TOLERANCE: ±1/8	
QUANTITY: 1	
GLCS500-10-23	
BOHL CRANE INC	

 600 FISHERS RUN P.O. BOX 593 FISHERS, NY 14453-0593	
BY: GORBEL	DATE: JUL 21, 2023
LINE #:0	P/N:ANTSMI00006.0A

HANGERS ARE ON 20' CENTERS MAXIMUM WITH A  
 48" CANTILEVER ON EACH END STANDARD.  
 X = HANGER POINT  
 HANGER POSITION TOLERANCE = +/- 3 1/2"  
 HANGERS MUST BE WITHIN 48" OF SPLICE JOINT  
 DO NOT SCALE FROM DRAWING.  
 DIMENSIONS ARE STEEL TO STEEL AND MAY VARY.

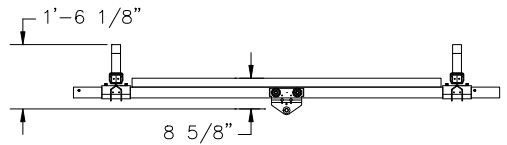
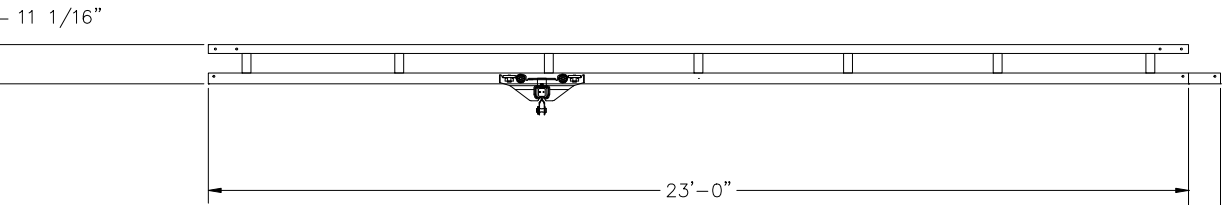
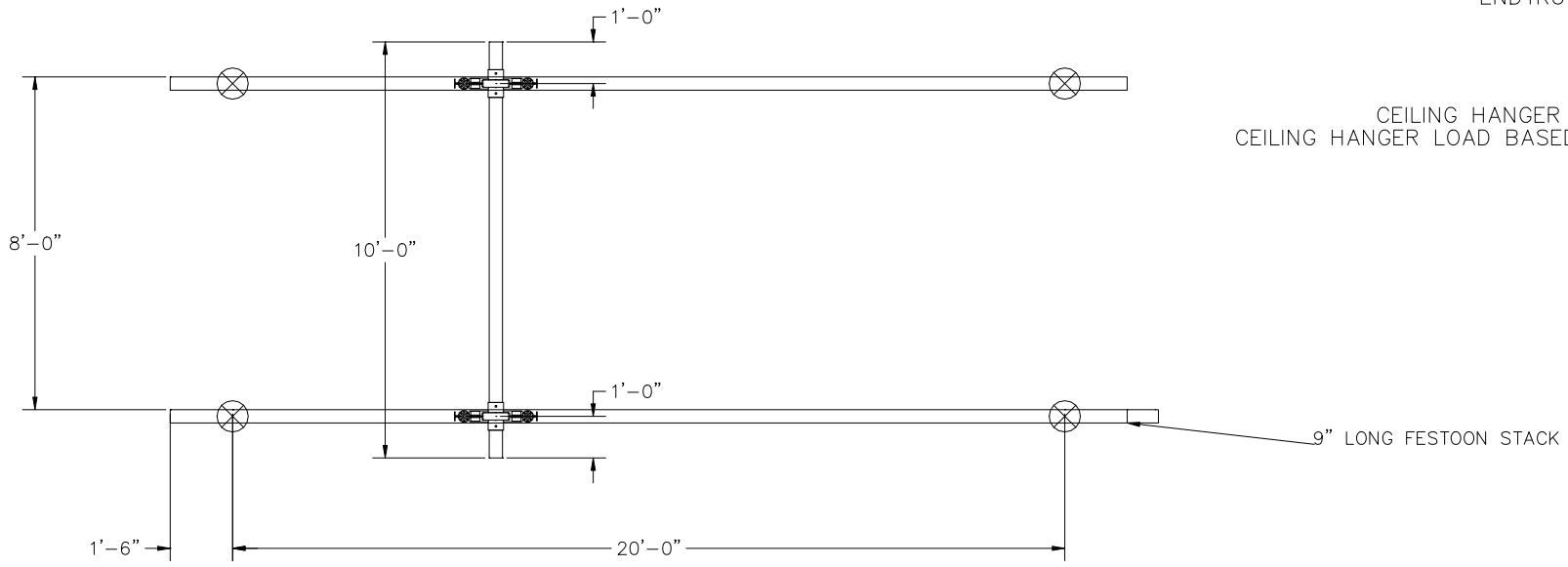


CONFIDENTIAL

SWAY BRACING IS REQUIRED., REFER TO MANUAL.  
 HANGER DETAIL SHOWN IS OUR STANDARD DESIGN AND MAY NOT  
 REPRESENT THE ACTUAL HANGER DESIGN UTILIZED ON THIS SYSTEM.

NOTE C: MINIMUM THD ROD DROP MUST MAINTAIN 3" OF  
 CLEARANCE BETWEEN BRIDGE AND LOWEST OBSTRUCTION.  
 BRIDGE TROLLEY TRAVEL IS 8'-2 7/16"  
 ENDTRUCK TRAVEL IS 20'-5 5/8"

CEILING HANGER LOAD AS CONFIGURED: 1630 LBS  
 CEILING HANGER LOAD BASED ON RUNWAY SERIES AT CAPACITY: 1630 LBS

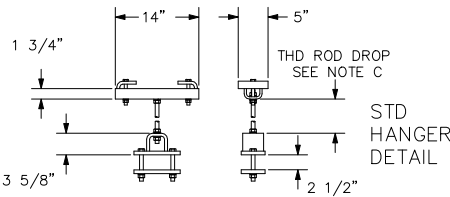


CRANE INFORMATION	
CAPACITY: 1000 LBS/BR	
BRIDGE OAL: 10'	
BRIDGE SERIES: 1000	
RUNWAY OAL: 23'	
RUNWAY SERIES: 1000	
TOLERANCE: ±1/8	BY: GORBEL
QUANTITY: 1	DATE: JUL 21, 2023
GLCS1000-10-23	LINE #:0
P/N:ANTSMI00006.0A	
BOHL CRANE INC	

**GORBEL**  
 600 FISHERS RUN  
 P.O. BOX 593  
 FISHERS, NY 14453-0593

GENERAL ARRANGEMENT

HANGERS ARE ON 20' CENTERS MAXIMUM WITH A  
 48" CANTILEVER ON EACH END STANDARD.  
 X = HANGER POINT  
 HANGER POSITION TOLERANCE = +/- 3 1/2"  
 HANGERS MUST BE WITHIN 48" OF SPLICE JOINT  
 DO NOT SCALE FROM DRAWING.  
 DIMENSIONS ARE STEEL TO STEEL AND MAY VARY.

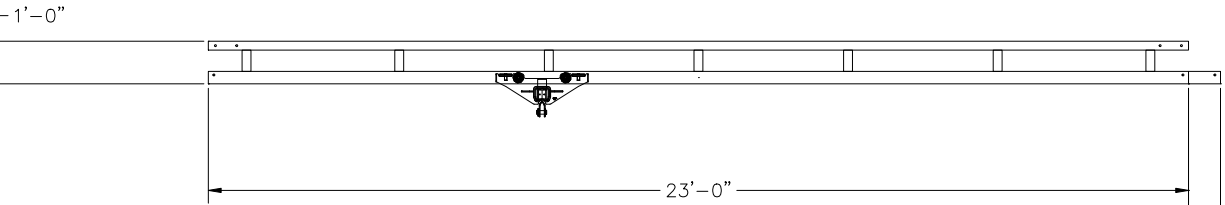
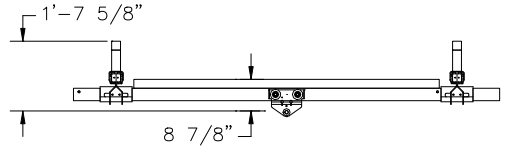
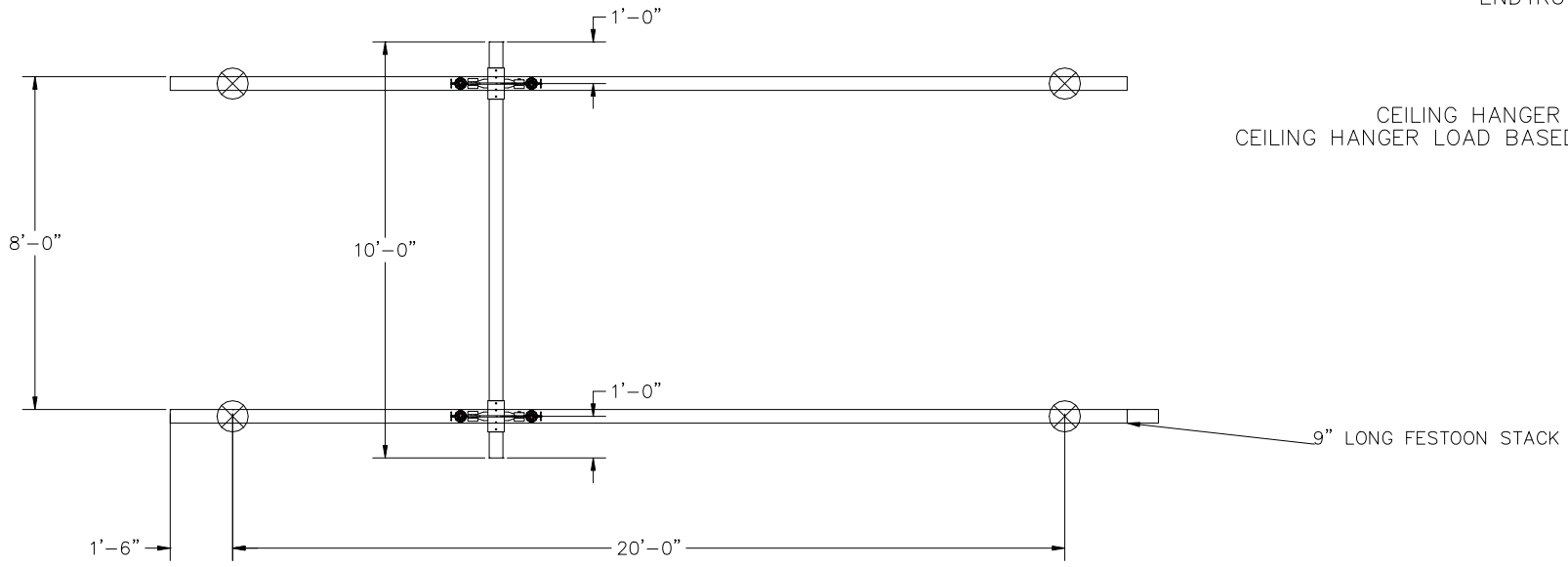


CONFIDENTIAL

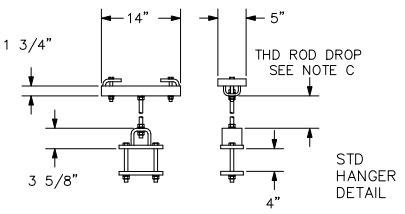
SWAY BRACING IS REQUIRED., REFER TO MANUAL.  
 HANGER DETAIL SHOWN IS OUR STANDARD DESIGN AND MAY NOT  
 REPRESENT THE ACTUAL HANGER DESIGN UTILIZED ON THIS SYSTEM.


NOTE C: MINIMUM THD ROD DROP MUST MAINTAIN 3" OF  
 CLEARANCE BETWEEN BRIDGE AND LOWEST OBSTRUCTION.  
 BRIDGE TROLLEY TRAVEL IS 7'-3 9/16"  
 ENDTRUCK TRAVEL IS 20'-3 1/2"

CEILING HANGER LOAD AS CONFIGURED: 3088 LBS  
 CEILING HANGER LOAD BASED ON RUNWAY SERIES AT CAPACITY: 3088 LBS



HANGERS ARE ON 20' CENTERS MAXIMUM WITH A  
 48" CANTILEVER ON EACH END STANDARD.  
 X = HANGER POINT  
 HANGER POSITION TOLERANCE = +/- 3 1/2"  
 HANGERS MUST BE WITHIN 48" OF SPLICE JOINT  
 DO NOT SCALE FROM DRAWING.  
 DIMENSIONS ARE STEEL TO STEEL AND MAY VARY.



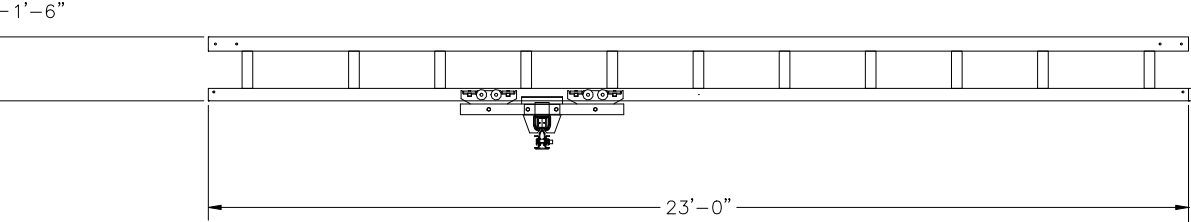
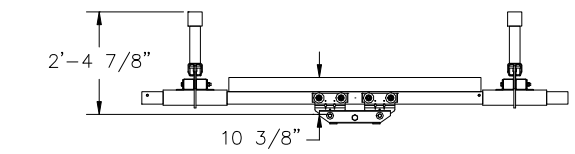
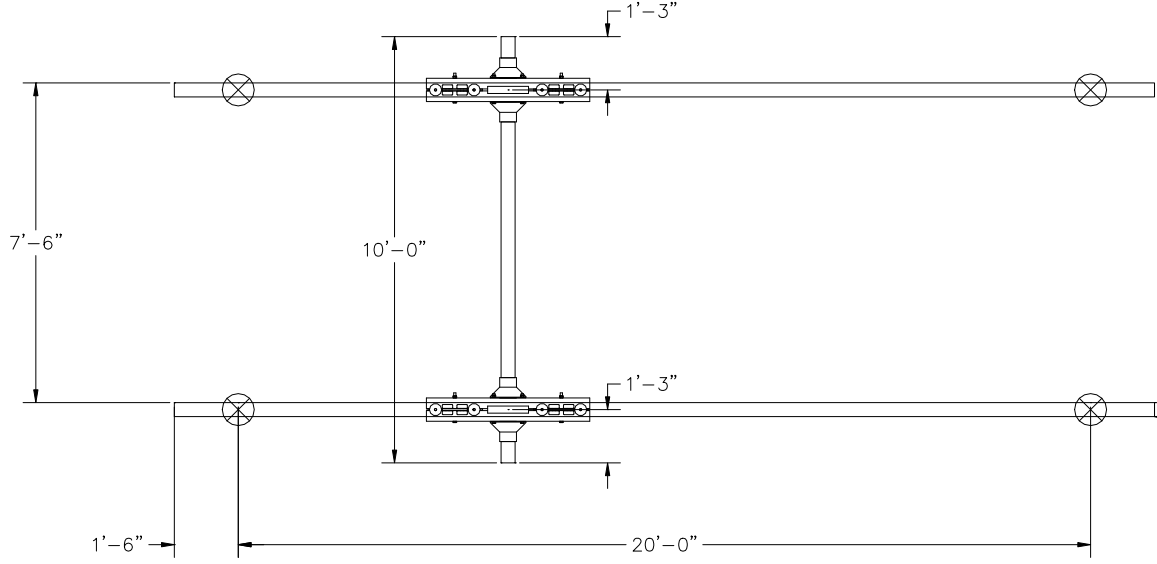
CRANE INFORMATION		 600 FISHERS RUN P.O. BOX 593 FISHERS, NY 14453-0593	
CAPACITY: 2000 LBS/BR			
BRIDGE OAL: 10'			
BRIDGE SERIES: 2000		BY: GORBEL	
RUNWAY OAL: 23'		DATE: JUL 21, 2023	
RUNWAY SERIES: 2000		LINE #:0	
TOLERANCE: ±1/8		P/N:ANTSMI00006.0A	
QUANTITY: 1			
GLCS2000-10-23			
BOHL CRANE INC			

CONFIDENTIAL

SWAY BRACING IS REQUIRED., REFER TO MANUAL.  
 HANGER DETAIL SHOWN IS OUR STANDARD DESIGN AND MAY NOT  
 REPRESENT THE ACTUAL HANGER DESIGN UTILIZED ON THIS SYSTEM.

NOTE C: MINIMUM THD ROD DROP MUST MAINTAIN 3" OF  
 CLEARANCE BETWEEN BRIDGE AND LOWEST OBSTRUCTION.  
 BRIDGE TROLLEY TRAVEL IS 5'-6 1/16"  
 ENDTRUCK TRAVEL IS 18'-7 1/2"

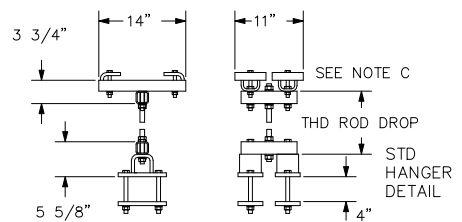
CEILING HANGER LOAD AS CONFIGURED: 6099 LBS  
 CEILING HANGER LOAD BASED ON RUNWAY SERIES AT CAPACITY: 6099 LBS



CRANE INFORMATION	
CAPACITY: 4000 LBS/BR	
BRIDGE OAL: 10'	
BRIDGE SERIES: 4000	
RUNWAY OAL: 23'	
RUNWAY SERIES: 4000	
TOLERANCE: ±1/8	
QUANTITY: 1	
GLCS4000-10-23	
BOHL CRANE INC	

<p>600 FISHERS RUN          P.O. BOX 593          FISHERS, NY 14453-0593</p>	
BY: GORBEL	DATE: JUL 21, 2023
LINE #:0	P/N:ANTSMI00006.0A

HANGERS ARE ON 20' CENTERS MAXIMUM WITH A  
 48" CANTILEVER ON EACH END STANDARD.  
 X = HANGER POINT  
 HANGER POSITION TOLERANCE = +/- 3 1/2"  
 HANGERS MUST BE WITHIN 48" OF SPLICE JOINT  
 DO NOT SCALE FROM DRAWING.  
 DIMENSIONS ARE STEEL TO STEEL AND MAY VARY.

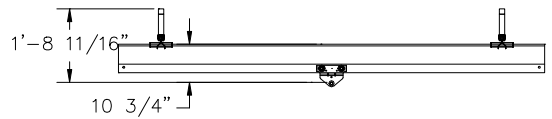
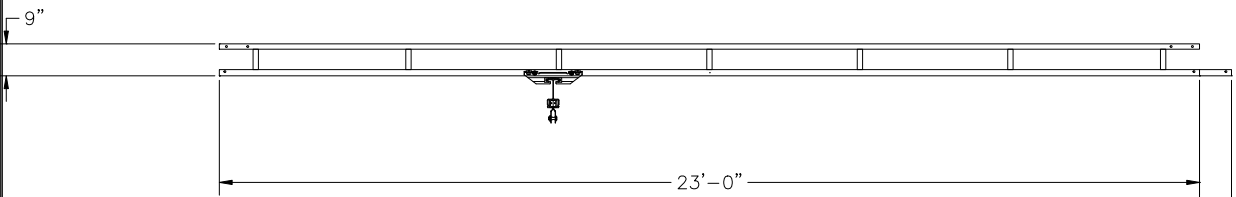
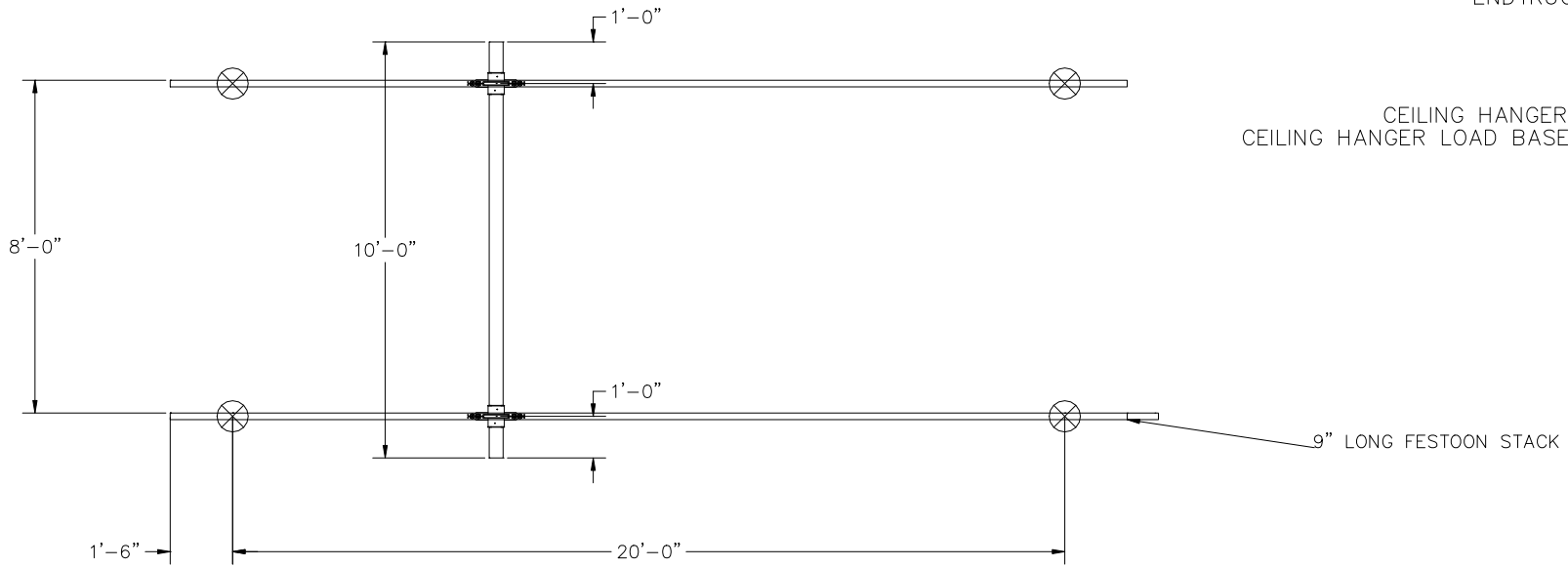


CONFIDENTIAL

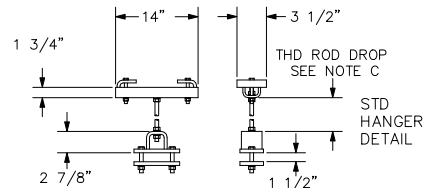
SWAY BRACING IS REQUIRED., REFER TO MANUAL.  
 HANGER DETAIL SHOWN IS OUR STANDARD DESIGN AND MAY NOT  
 REPRESENT THE ACTUAL HANGER DESIGN UTILIZED ON THIS SYSTEM.


NOTE C: MINIMUM THD ROD DROP MUST MAINTAIN 3" OF  
 CLEARANCE BETWEEN BRIDGE AND LOWEST OBSTRUCTION.  
 BRIDGE TROLLEY TRAVEL IS 8'-9 13/16"  
 ENDRUCK TRAVEL IS 20'-10 3/8"

CEILING HANGER LOAD AS CONFIGURED: 435 LBS  
 CEILING HANGER LOAD BASED ON RUNWAY SERIES AT CAPACITY: 435 LBS



HANGERS ARE ON 20' CENTERS MAXIMUM WITH A  
 48" CANTILEVER ON EACH END STANDARD.  
 X = HANGER POINT  
 HANGER POSITION TOLERANCE = +/- 3 1/2"  
 HANGERS MUST BE WITHIN 48" OF SPLICE JOINT  
 DO NOT SCALE FROM DRAWING.  
 DIMENSIONS ARE STEEL TO STEEL AND MAY VARY.



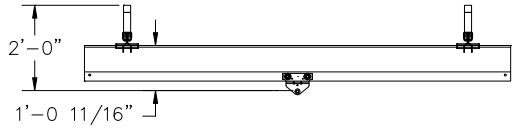
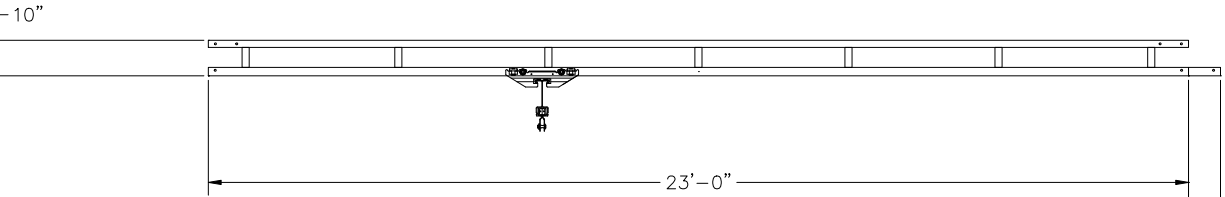
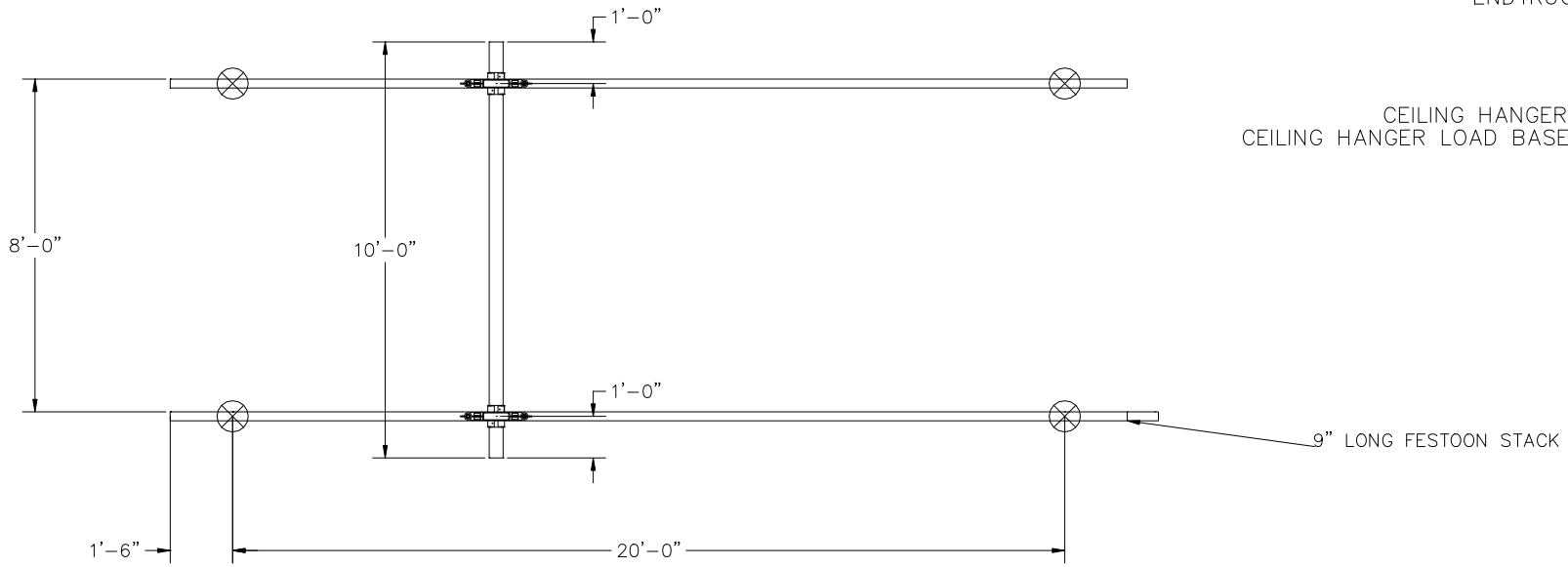
CRANE INFORMATION		 600 FISHERS RUN P.O. BOX 593 FISHERS, NY 14453-0593	
CAPACITY: 250 LBS/BR			
BRIDGE OAL: 10'			
BRIDGE SERIES: 250		BY: GORBEL	
RUNWAY OAL: 23'		DATE: JUL 21, 2023	
RUNWAY SERIES: 250		LINE #:0	
TOLERANCE: ±1/8		P/N:ANTSMI00006.0A	
QUANTITY: 1			
GLCS250-10AL-23			
BOHL CRANE INC			

CONFIDENTIAL

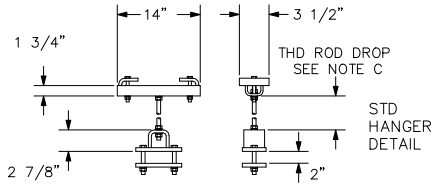
SWAY BRACING IS REQUIRED., REFER TO MANUAL.  
 HANGER DETAIL SHOWN IS OUR STANDARD DESIGN AND MAY NOT  
 REPRESENT THE ACTUAL HANGER DESIGN UTILIZED ON THIS SYSTEM.

NOTE C: MINIMUM THD ROD DROP MUST MAINTAIN 3" OF  
 CLEARANCE BETWEEN BRIDGE AND LOWEST OBSTRUCTION.  
 BRIDGE TROLLEY TRAVEL IS 8'-9 13/16"  
 ENDRUCK TRAVEL IS 20'-9 7/16"

CEILING HANGER LOAD AS CONFIGURED: 826 LBS  
 CEILING HANGER LOAD BASED ON RUNWAY SERIES AT CAPACITY: 826 LBS



HANGERS ARE ON 20' CENTERS MAXIMUM WITH A  
 48" CANTILEVER ON EACH END STANDARD.  
 X = HANGER POINT  
 HANGER POSITION TOLERANCE = +/- 3 1/2"  
 HANGERS MUST BE WITHIN 48" OF SPLICE JOINT  
 DO NOT SCALE FROM DRAWING.  
 DIMENSIONS ARE STEEL TO STEEL AND MAY VARY.



CRANE INFORMATION	
CAPACITY: 500 LBS/BR	
BRIDGE OAL: 10'	
BRIDGE SERIES: 500	
RUNWAY OAL: 23'	
RUNWAY SERIES: 500	
TOLERANCE: ±1/8	
QUANTITY: 1	
GLCS500-10AL-23	
BOHL CRANE INC	

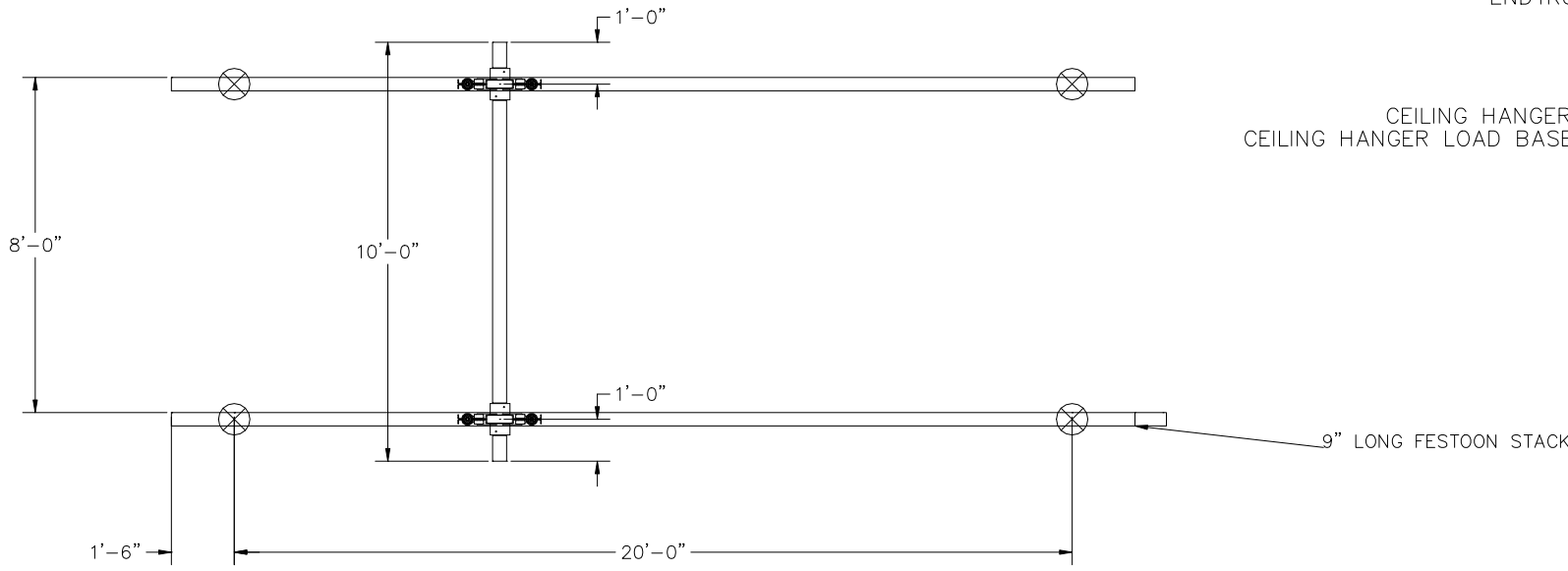
<p>600 FISHERS RUN          P.O. BOX 593          FISHERS, NY 14453-0593</p>	
BY: GORBEL	DATE: JUL 21, 2023
LINE #:0	P/N:ANTSMI00006.0A

CONFIDENTIAL

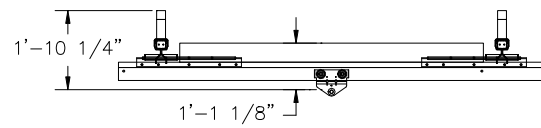
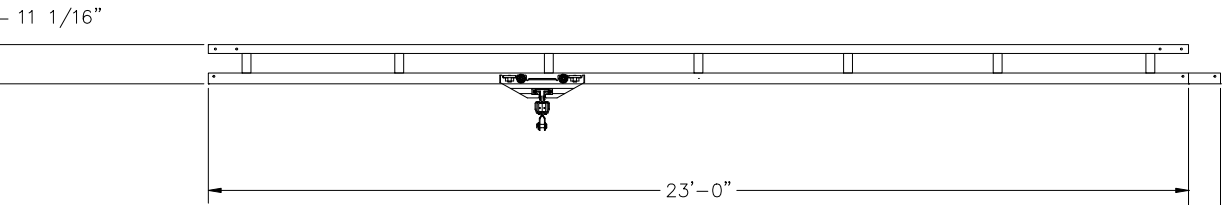
SWAY BRACING IS REQUIRED., REFER TO MANUAL.  
 HANGER DETAIL SHOWN IS OUR STANDARD DESIGN AND MAY NOT  
 REPRESENT THE ACTUAL HANGER DESIGN UTILIZED ON THIS SYSTEM.  
 SYSTEM IS UTILIZING NEW ALUMINUM TRACK BRIDGE(S)


NOTE C: MINIMUM THD ROD DROP MUST MAINTAIN 3" OF  
 CLEARANCE BETWEEN BRIDGE AND LOWEST OBSTRUCTION.  
 BRIDGE TROLLEY TRAVEL IS 7'-3 13/16"  
 ENDTRUCK TRAVEL IS 20'-5 5/8"

CEILING HANGER LOAD AS CONFIGURED: 1613 LBS  
 CEILING HANGER LOAD BASED ON RUNWAY SERIES AT CAPACITY: 1613 LBS

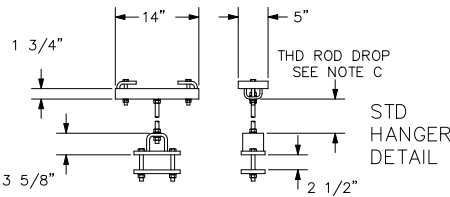


9" LONG FESTOON STACK



<b>CRANE INFORMATION</b> CAPACITY: 1000 LBS/BR BRIDGE OAL: 10' BRIDGE SERIES: 1000 RUNWAY OAL: 23' RUNWAY SERIES: 1000		 600 FISHERS RUN P.O. BOX 593 FISHERS, NY 14453-0593	
TOLERANCE: ±1/8 QUANTITY: 1 GLCS1000-10AL-23 BOHL CRANE INC			

HANGERS ARE ON 20' CENTERS MAXIMUM WITH A  
 48" CANTILEVER ON EACH END STANDARD.  
 X = HANGER POINT  
 HANGER POSITION TOLERANCE = +/- 3 1/2"  
 HANGERS MUST BE WITHIN 48" OF SPLICE JOINT  
 DO NOT SCALE FROM DRAWING.  
 DIMENSIONS ARE STEEL TO STEEL AND MAY VARY.



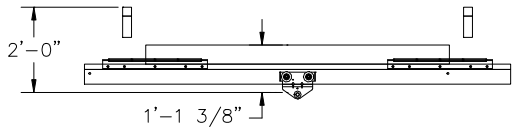
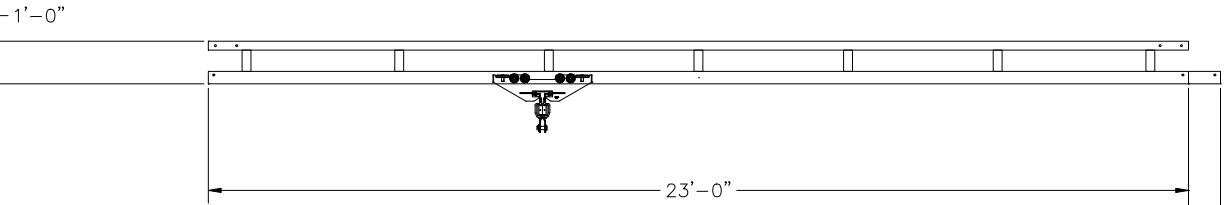
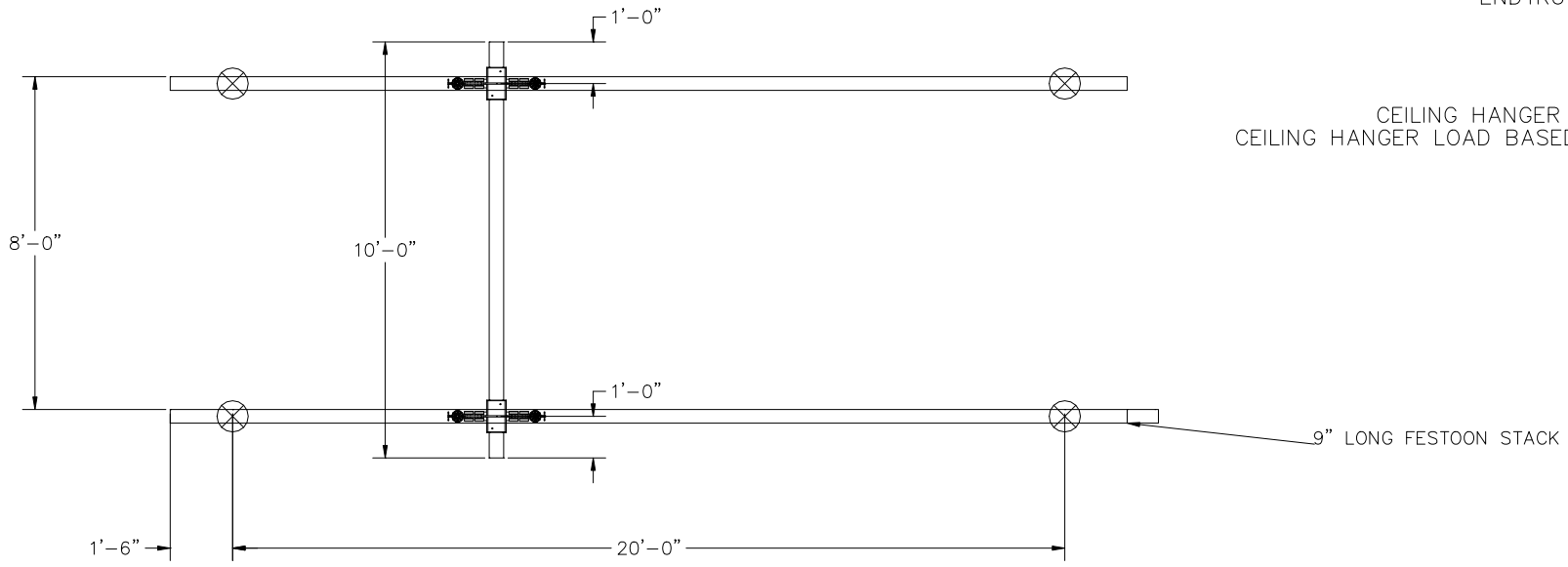


CONFIDENTIAL

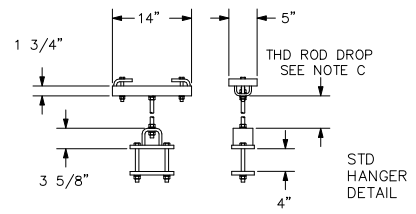
SWAY BRACING IS REQUIRED., REFER TO MANUAL.  
 HANGER DETAIL SHOWN IS OUR STANDARD DESIGN AND MAY NOT  
 REPRESENT THE ACTUAL HANGER DESIGN UTILIZED ON THIS SYSTEM.  
 SYSTEM IS UTILIZING NEW ALUMINUM TRACK BRIDGE(S)

NOTE C: MINIMUM THD ROD DROP MUST MAINTAIN 3" OF  
 CLEARANCE BETWEEN BRIDGE AND LOWEST OBSTRUCTION.  
 BRIDGE TROLLEY TRAVEL IS 7'-3 7/16"  
 ENDTRUCK TRAVEL IS 20'-1 5/8"

CEILING HANGER LOAD AS CONFIGURED: 3064 LBS  
 CEILING HANGER LOAD BASED ON RUNWAY SERIES AT CAPACITY: 3064 LBS



HANGERS ARE ON 20' CENTERS MAXIMUM WITH A  
 48" CANTILEVER ON EACH END STANDARD.  
 X = HANGER POINT  
 HANGER POSITION TOLERANCE = +/- 3 1/2"  
 HANGERS MUST BE WITHIN 48" OF SPLICE JOINT  
 DO NOT SCALE FROM DRAWING.  
 DIMENSIONS ARE STEEL TO STEEL AND MAY VARY.



CRANE INFORMATION	
CAPACITY: 2000 LBS/BR	
BRIDGE OAL: 10'	
BRIDGE SERIES: 2000	
RUNWAY OAL: 23'	
RUNWAY SERIES: 2000	
TOLERANCE: ±1/8	
QUANTITY: 1	
GLCS2000-10AL-23	
BOHL CRANE INC	

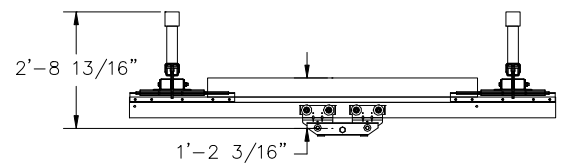
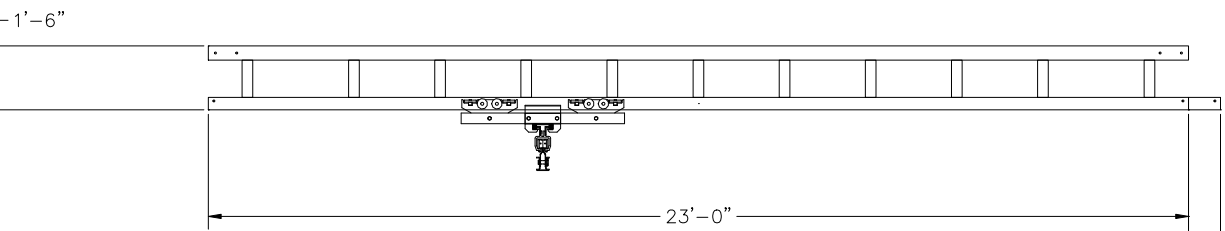
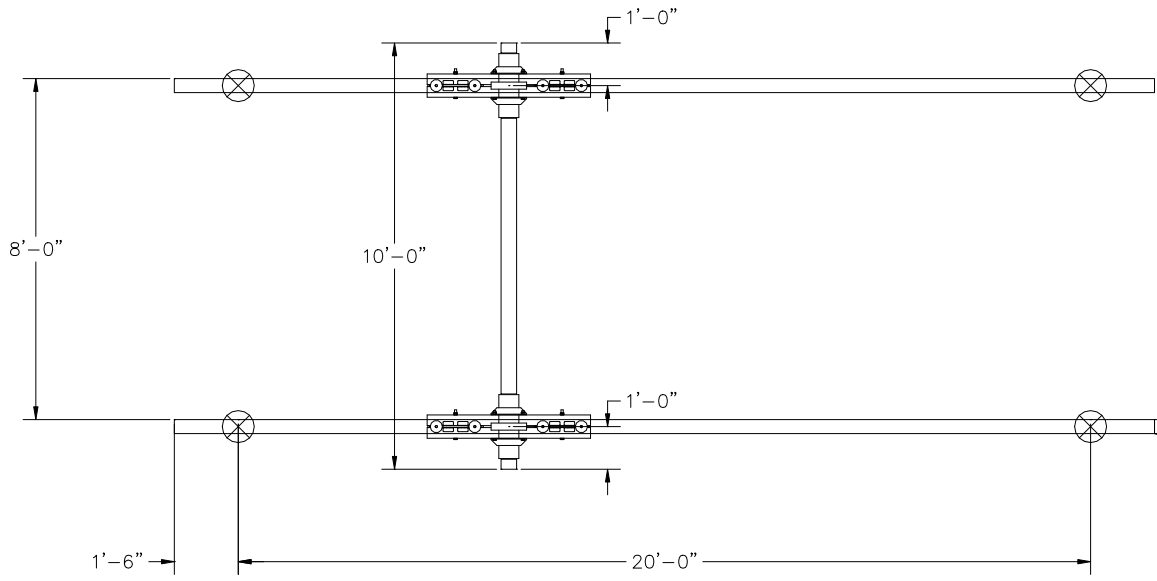
 600 FISHERS RUN P.O. BOX 593 FISHERS, NY 14453-0593	
BY: GORBEL	DATE: JUL 21, 2023
LINE #: 0	P/N: ANTSMI00006.0A

CONFIDENTIAL

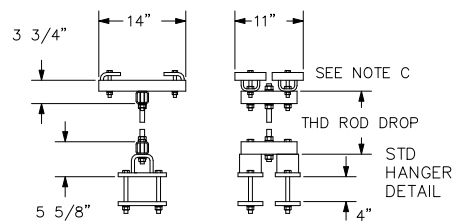
SWAY BRACING IS REQUIRED., REFER TO MANUAL.  
 HANGER DETAIL SHOWN IS OUR STANDARD DESIGN AND MAY NOT  
 REPRESENT THE ACTUAL HANGER DESIGN UTILIZED ON THIS SYSTEM.  
 SYSTEM IS UTILIZING NEW ALUMINUM TRACK BRIDGE(S)

NOTE C: MINIMUM THD ROD DROP MUST MAINTAIN 3" OF  
 CLEARANCE BETWEEN BRIDGE AND LOWEST OBSTRUCTION.  
 BRIDGE TROLLEY TRAVEL IS 5'-8 15/16"  
 ENDTRUCK TRAVEL IS 18'-7 1/2"


CEILING HANGER LOAD AS CONFIGURED: 6068 LBS  
 CEILING HANGER LOAD BASED ON RUNWAY SERIES AT CAPACITY: 6068 LBS



HANGERS ARE ON 20' CENTERS MAXIMUM WITH A  
 48" CANTILEVER ON EACH END STANDARD.  
 X = HANGER POINT  
 HANGER POSITION TOLERANCE = +/- 3 1/2"  
 HANGERS MUST BE WITHIN 48" OF SPLICE JOINT  
 DO NOT SCALE FROM DRAWING.  
 DIMENSIONS ARE STEEL TO STEEL AND MAY VARY.



CRANE INFORMATION	
CAPACITY: 4000 LBS/BR	
BRIDGE OAL: 10'	
BRIDGE SERIES: 4000	
RUNWAY OAL: 23'	
RUNWAY SERIES: 4000	
TOLERANCE: ±1/8	
QUANTITY: 1	
GLCS4000-10AL-23	
BOHL CRANE INC	

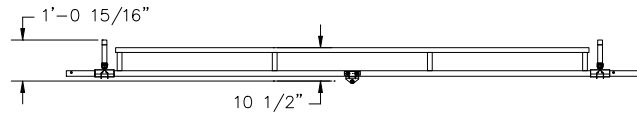
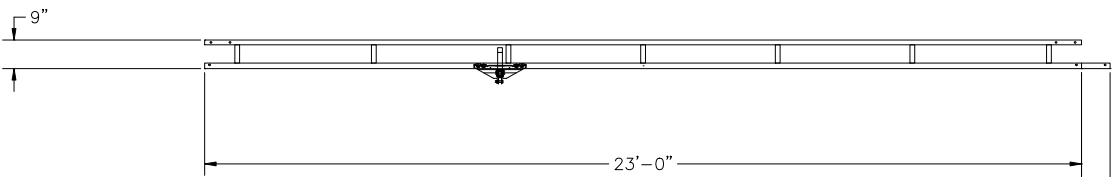
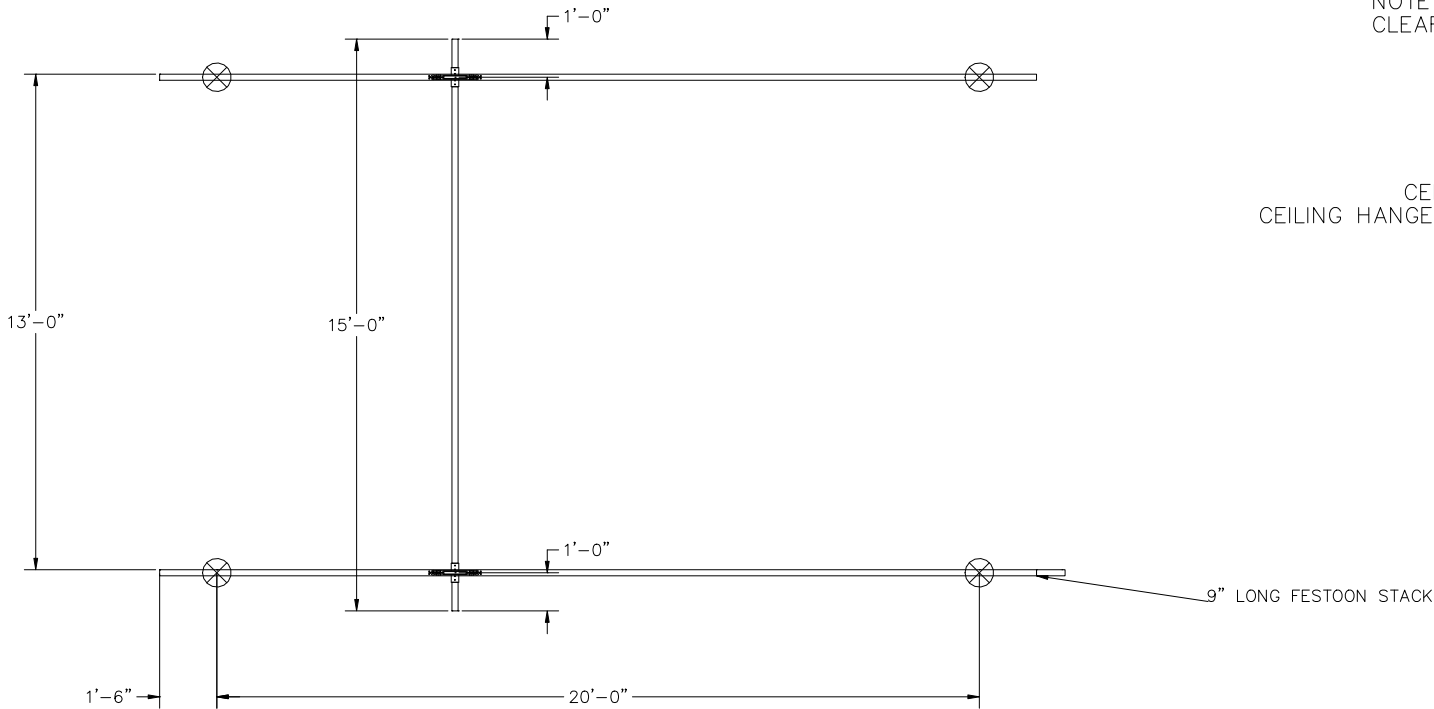
 600 FISHERS RUN P.O. BOX 593 FISHERS, NY 14453-0593	
BY: GORBEL	DATE: JUL 21, 2023
LINE #:0	P/N:ANTSMI00006.0A

CONFIDENTIAL

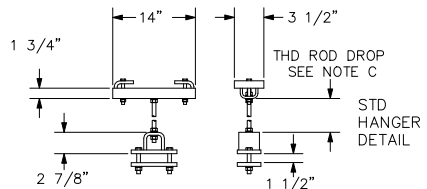
SWAY BRACING IS REQUIRED., REFER TO MANUAL.  
 HANGER DETAIL SHOWN IS OUR STANDARD DESIGN AND MAY NOT  
 REPRESENT THE ACTUAL HANGER DESIGN UTILIZED ON THIS SYSTEM.

NOTE C: MINIMUM THD ROD DROP MUST MAINTAIN 3" OF  
 CLEARANCE BETWEEN BRIDGE AND LOWEST OBSTRUCTION.  
 BRIDGE TROLLEY TRAVEL IS 13'-8 1/8"  
 ENDTRUCK TRAVEL IS 21'-2 1/2"

CEILING HANGER LOAD AS CONFIGURED: 452 LBS  
 CEILING HANGER LOAD BASED ON RUNWAY SERIES AT CAPACITY: 452 LBS



HANGERS ARE ON 20' CENTERS MAXIMUM WITH A  
 48" CANTILEVER ON EACH END STANDARD.  
 X = HANGER POINT  
 HANGER POSITION TOLERANCE = +/- 3 1/2"  
 HANGERS MUST BE WITHIN 48" OF SPLICE JOINT  
 DO NOT SCALE FROM DRAWING.  
 DIMENSIONS ARE STEEL TO STEEL AND MAY VARY.



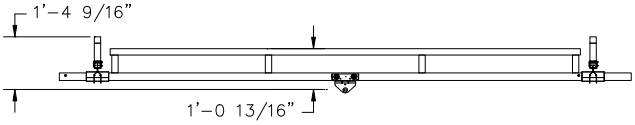
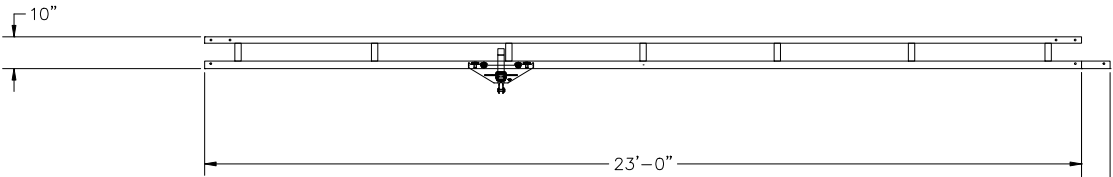
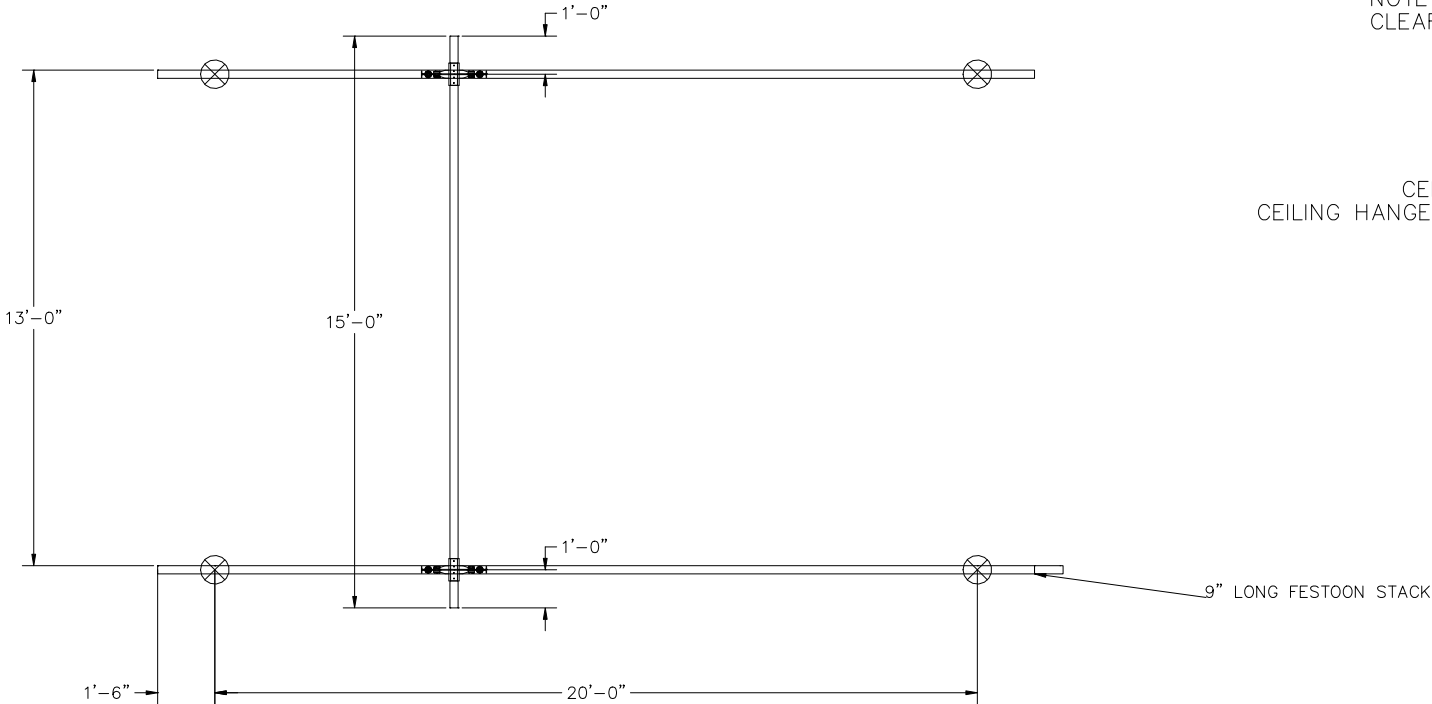
CRANE INFORMATION		<b>GORBEL</b> 600 FISHERS RUN P.O. BOX 593 FISHERS, NY 14453-0593	
CAPACITY: 250 LBS/BR			
BRIDGE OAL: 15'		GENERAL ARRANGEMENT	
BRIDGE SERIES: 250			
RUNWAY OAL: 23'			
RUNWAY SERIES: 250			
TOLERANCE: ±1/8		BY: GORBEL	DATE: JUL 21, 2023
QUANTITY: 1		LINE #: 0	P/N: ANTSMI00006.0A
GLCS250-15-23			
BOHL CRANE INC			

CONFIDENTIAL

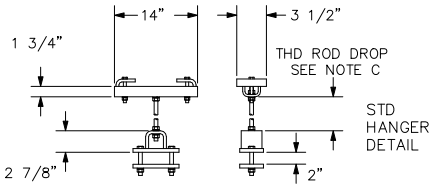
SWAY BRACING IS REQUIRED., REFER TO MANUAL.  
 HANGER DETAIL SHOWN IS OUR STANDARD DESIGN AND MAY NOT  
 REPRESENT THE ACTUAL HANGER DESIGN UTILIZED ON THIS SYSTEM.

NOTE C: MINIMUM THD ROD DROP MUST MAINTAIN 3" OF  
 CLEARANCE BETWEEN BRIDGE AND LOWEST OBSTRUCTION.  
 BRIDGE TROLLEY TRAVEL IS 12'-7"  
 ENDTRUCK TRAVEL IS 20'-9 7/16"

CEILING HANGER LOAD AS CONFIGURED: 856 LBS  
 CEILING HANGER LOAD BASED ON RUNWAY SERIES AT CAPACITY: 856 LBS



HANGERS ARE ON 20' CENTERS MAXIMUM WITH A  
 48" CANTILEVER ON EACH END STANDARD.  
 X = HANGER POINT  
 HANGER POSITION TOLERANCE = +/- 3 1/2"  
 HANGERS MUST BE WITHIN 48" OF SPLICE JOINT  
 DO NOT SCALE FROM DRAWING.  
 DIMENSIONS ARE STEEL TO STEEL AND MAY VARY.



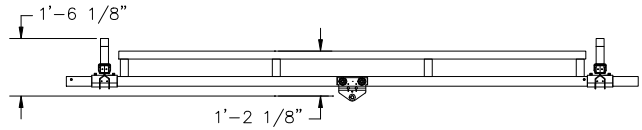
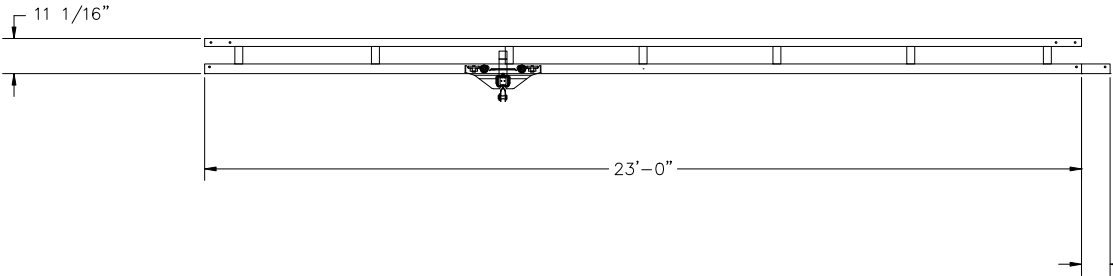
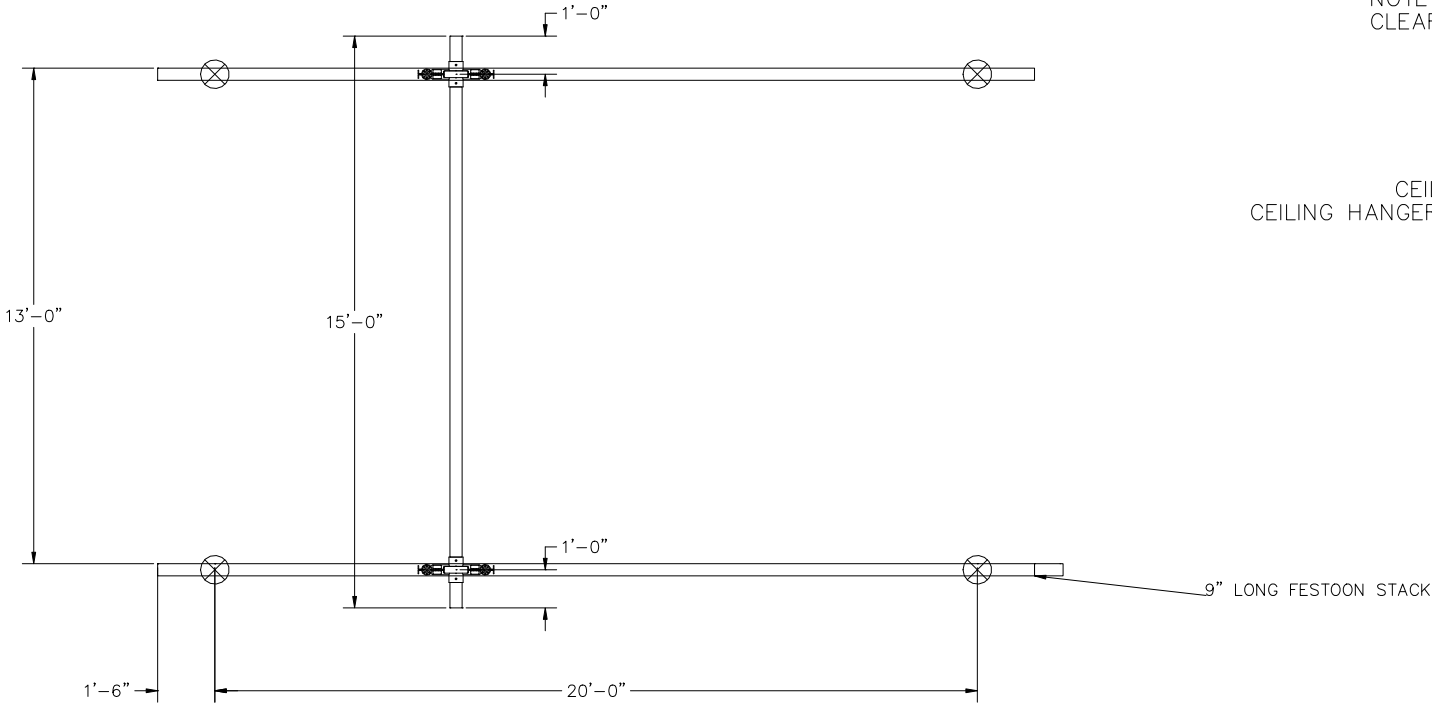
CRANE INFORMATION		<b>GORBEL</b> 600 FISHERS RUN P.O. BOX 593 FISHERS, NY 14453-0593	
CAPACITY: 500 LBS/BR			
BRIDGE OAL: 15'		GENERAL ARRANGEMENT	
BRIDGE SERIES: 500			
RUNWAY OAL: 23'			
RUNWAY SERIES: 500			
TOLERANCE: ±1/8		BY: GORBEL	DATE: JUL 21, 2023
QUANTITY: 1		LINE #: 0	P/N: ANTSMI00006.0A
GLCS500-15-23			
BOHL CRANE INC			

CONFIDENTIAL

SWAY BRACING IS REQUIRED., REFER TO MANUAL.  
 HANGER DETAIL SHOWN IS OUR STANDARD DESIGN AND MAY NOT  
 REPRESENT THE ACTUAL HANGER DESIGN UTILIZED ON THIS SYSTEM.

NOTE C: MINIMUM THD ROD DROP MUST MAINTAIN 3" OF  
 CLEARANCE BETWEEN BRIDGE AND LOWEST OBSTRUCTION.  
 BRIDGE TROLLEY TRAVEL IS 12'-4 7/16"  
 ENDTRUCK TRAVEL IS 20'-5 5/8"

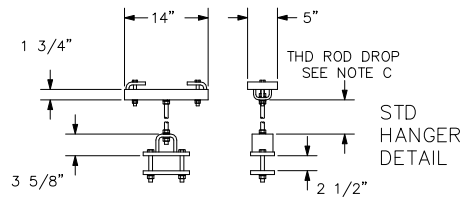
CEILING HANGER LOAD AS CONFIGURED: 1661 LBS  
 CEILING HANGER LOAD BASED ON RUNWAY SERIES AT CAPACITY: 1661 LBS



CRANE INFORMATION	
CAPACITY: 1000 LBS/BR	
BRIDGE OAL: 15'	
BRIDGE SERIES: 1000	
RUNWAY OAL: 23'	
RUNWAY SERIES: 1000	
TOLERANCE: ±1/8	
QUANTITY: 1	
GLCS1000-15-23	
BOHL CRANE INC	

<b>GORBEL</b> 600 FISHERS RUN P.O. BOX 593 FISHERS, NY 14453-0593	
BY: GORBEL	DATE: JUL 21, 2023
LINE #: 0	P/N: ANTSMI00006.0A

HANGERS ARE ON 20' CENTERS MAXIMUM WITH A  
 48" CANTILEVER ON EACH END STANDARD.  
 X = HANGER POINT  
 HANGER POSITION TOLERANCE = +/- 3 1/2"  
 HANGERS MUST BE WITHIN 48" OF SPLICE JOINT  
 DO NOT SCALE FROM DRAWING.  
 DIMENSIONS ARE STEEL TO STEEL AND MAY VARY.

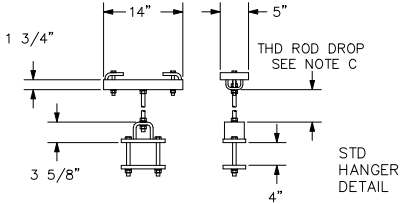
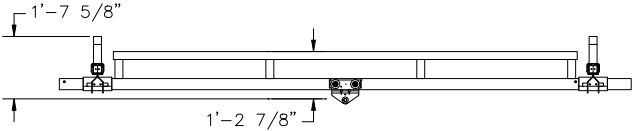
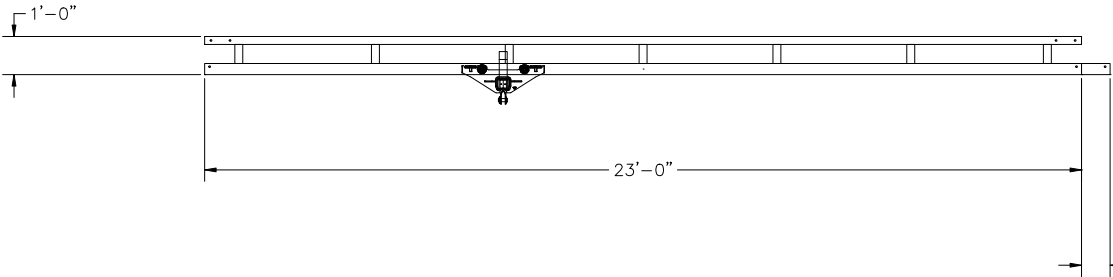
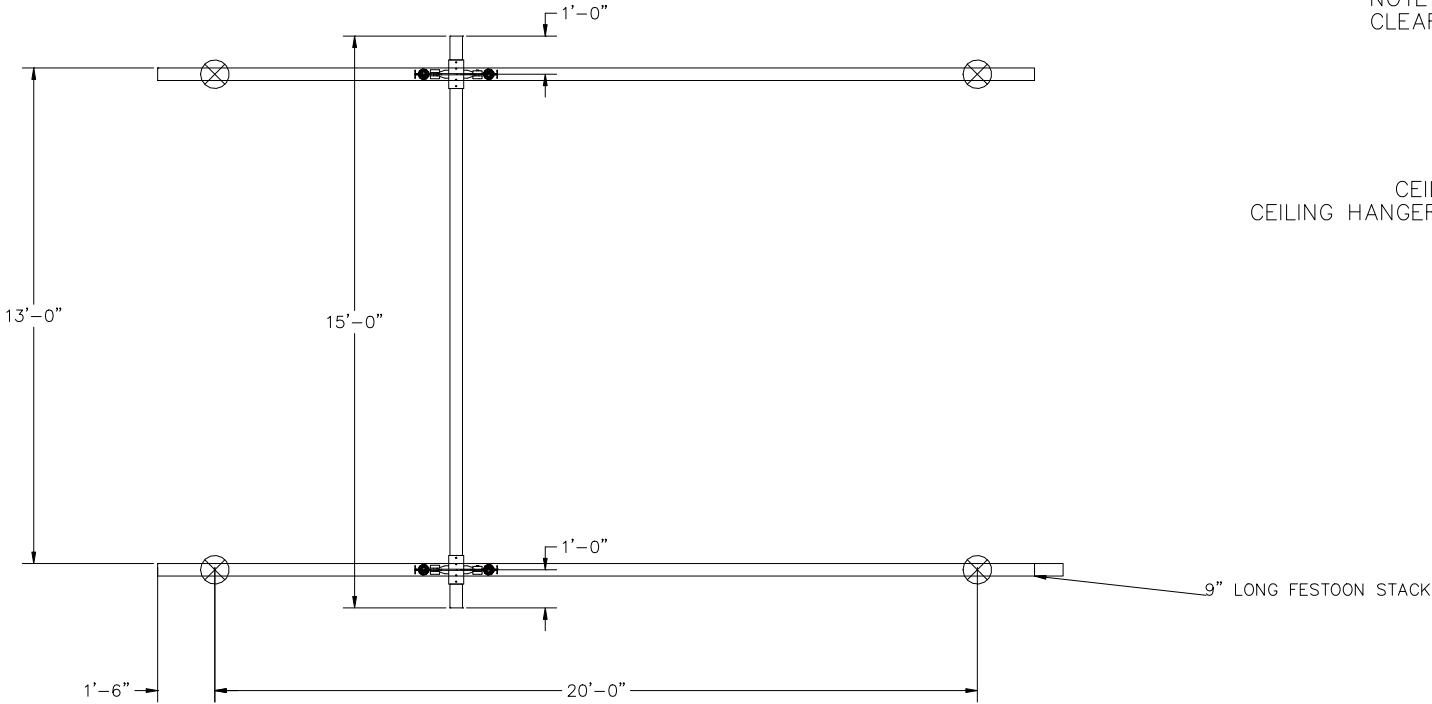


CONFIDENTIAL

SWAY BRACING IS REQUIRED., REFER TO MANUAL.  
 HANGER DETAIL SHOWN IS OUR STANDARD DESIGN AND MAY NOT  
 REPRESENT THE ACTUAL HANGER DESIGN UTILIZED ON THIS SYSTEM.

NOTE C: MINIMUM THD ROD DROP MUST MAINTAIN 3" OF  
 CLEARANCE BETWEEN BRIDGE AND LOWEST OBSTRUCTION.  
 BRIDGE TROLLEY TRAVEL IS 12'-3 9/16"  
 ENDTRUCK TRAVEL IS 20'-3 1/2"

CEILING HANGER LOAD AS CONFIGURED: 3124 LBS  
 CEILING HANGER LOAD BASED ON RUNWAY SERIES AT CAPACITY: 3124 LBS



HANGERS ARE ON 20' CENTERS MAXIMUM WITH A  
 48" CANTILEVER ON EACH END STANDARD.  
 X = HANGER POINT  
 HANGER POSITION TOLERANCE = +/- 3 1/2"  
 HANGERS MUST BE WITHIN 48" OF SPLICE JOINT  
 DO NOT SCALE FROM DRAWING.  
 DIMENSIONS ARE STEEL TO STEEL AND MAY VARY.

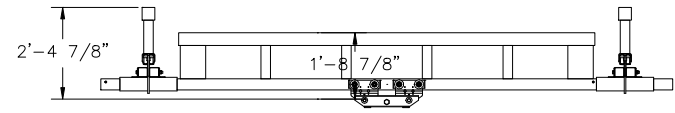
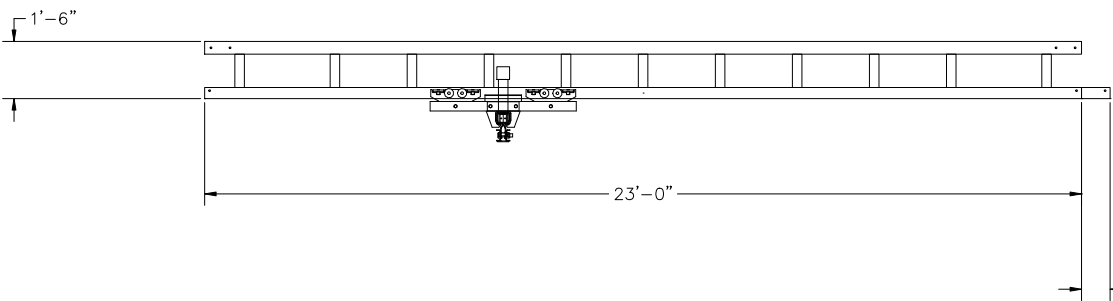
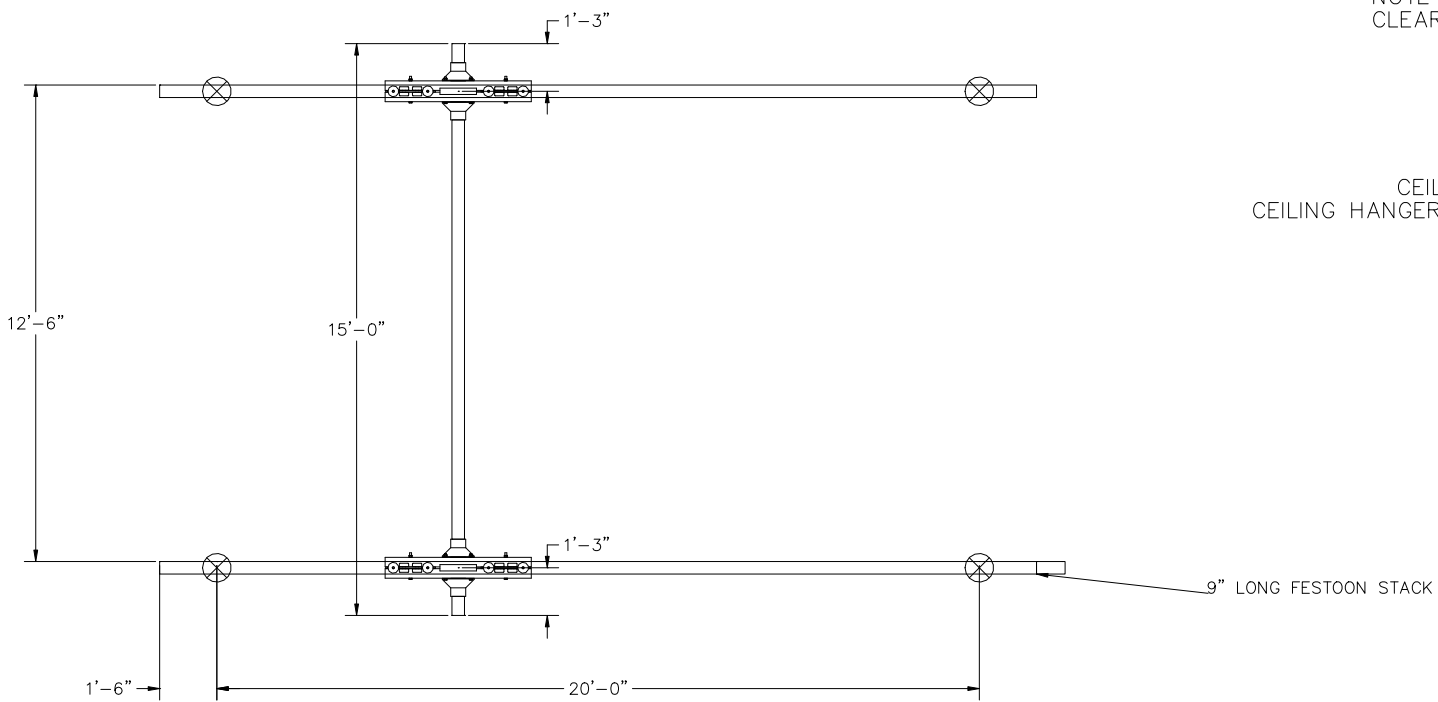
CRANE INFORMATION		<b>GORBEL</b> 600 FISHERS RUN P.O. BOX 593 FISHERS, NY 14453-0593	
CAPACITY: 2000 LBS/BR			
BRIDGE OAL: 15'		GENERAL ARRANGEMENT	
BRIDGE SERIES: 2000			
RUNWAY OAL: 23'			
RUNWAY SERIES: 2000			
TOLERANCE: ±1/8		BY: GORBEL	DATE: JUL 21, 2023
QUANTITY: 1		LINE #: 0	P/N: ANTSMI00006.0A
GLCS2000-15-23			
BOHL CRANE INC			

CONFIDENTIAL

SWAY BRACING IS REQUIRED., REFER TO MANUAL.  
 HANGER DETAIL SHOWN IS OUR STANDARD DESIGN AND MAY NOT  
 REPRESENT THE ACTUAL HANGER DESIGN UTILIZED ON THIS SYSTEM.

NOTE C: MINIMUM THD ROD DROP MUST MAINTAIN 3" OF  
 CLEARANCE BETWEEN BRIDGE AND LOWEST OBSTRUCTION.  
 BRIDGE TROLLEY TRAVEL IS 10'-6 1/16"  
 ENDTRUCK TRAVEL IS 18'-7 1/2"

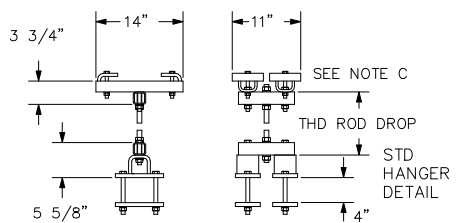
CEILING HANGER LOAD AS CONFIGURED: 6145 LBS  
 CEILING HANGER LOAD BASED ON RUNWAY SERIES AT CAPACITY: 6145 LBS



CRANE INFORMATION	
CAPACITY: 4000 LBS/BR	
BRIDGE OAL: 15'	
BRIDGE SERIES: 4000	
RUNWAY OAL: 23'	
RUNWAY SERIES: 4000	
TOLERANCE: ±1/8	
QUANTITY: 1	
GLCS4000-15-23	
BOHL CRANE INC	

<b>GORBEL</b> 600 FISHERS RUN P.O. BOX 593 FISHERS, NY 14453-0593	
BY: GORBEL	DATE: JUL 21, 2023
LINE #: 0	P/N: ANTSMI00006.0A

HANGERS ARE ON 20' CENTERS MAXIMUM WITH A  
 48" CANTILEVER ON EACH END STANDARD.  
 X = HANGER POINT  
 HANGER POSITION TOLERANCE = +/- 3 1/2"  
 HANGERS MUST BE WITHIN 48" OF SPLICE JOINT  
 DO NOT SCALE FROM DRAWING.  
 DIMENSIONS ARE STEEL TO STEEL AND MAY VARY.

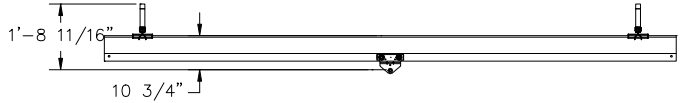
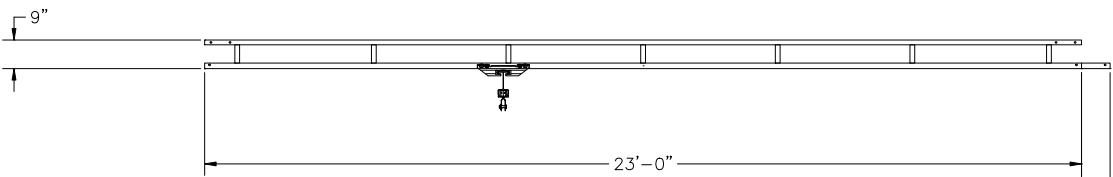
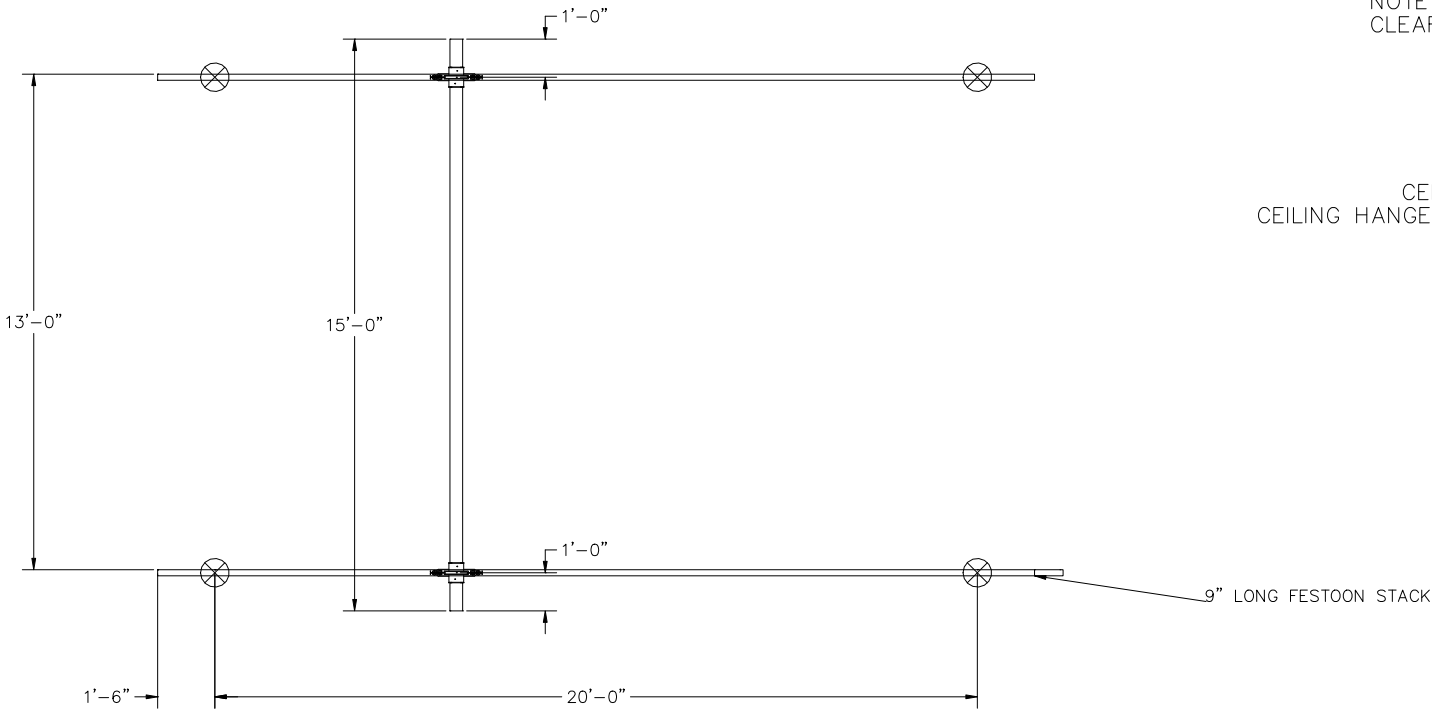


CONFIDENTIAL

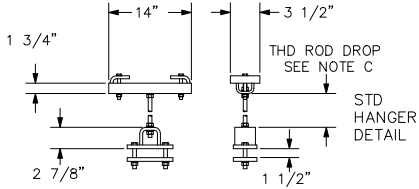
SWAY BRACING IS REQUIRED., REFER TO MANUAL.  
 HANGER DETAIL SHOWN IS OUR STANDARD DESIGN AND MAY NOT  
 REPRESENT THE ACTUAL HANGER DESIGN UTILIZED ON THIS SYSTEM.

NOTE C: MINIMUM THD ROD DROP MUST MAINTAIN 3" OF  
 CLEARANCE BETWEEN BRIDGE AND LOWEST OBSTRUCTION.  
 BRIDGE TROLLEY TRAVEL IS 13'-9 13/16"  
 ENDRUCK TRAVEL IS 20'-10 3/8"

CEILING HANGER LOAD AS CONFIGURED: 445 LBS  
 CEILING HANGER LOAD BASED ON RUNWAY SERIES AT CAPACITY: 445 LBS



HANGERS ARE ON 20' CENTERS MAXIMUM WITH A  
 48" CANTILEVER ON EACH END STANDARD.  
 X = HANGER POINT  
 HANGER POSITION TOLERANCE = +/- 3 1/2"  
 HANGERS MUST BE WITHIN 48" OF SPLICE JOINT  
 DO NOT SCALE FROM DRAWING.  
 DIMENSIONS ARE STEEL TO STEEL AND MAY VARY.



CRANE INFORMATION		<b>GORBEL</b> 600 FISHERS RUN P.O. BOX 593 FISHERS, NY 14453-0593	
CAPACITY: 250 LBS/BR			
BRIDGE OAL: 15'		GENERAL ARRANGEMENT	
BRIDGE SERIES: 250			
RUNWAY OAL: 23'			
RUNWAY SERIES: 250			
TOLERANCE: ±1/8		BY: GORBEL	DATE: JUL 21, 2023
QUANTITY: 1		LINE #: 0	P/N: ANTSMI00006.0A
GLCS250-15AL-23			
BOHL CRANE INC			

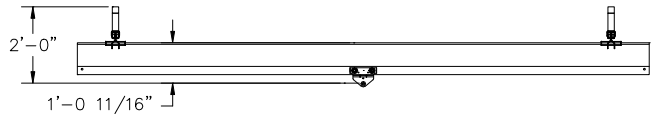
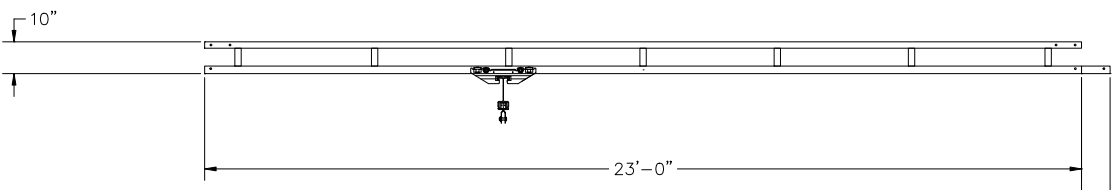
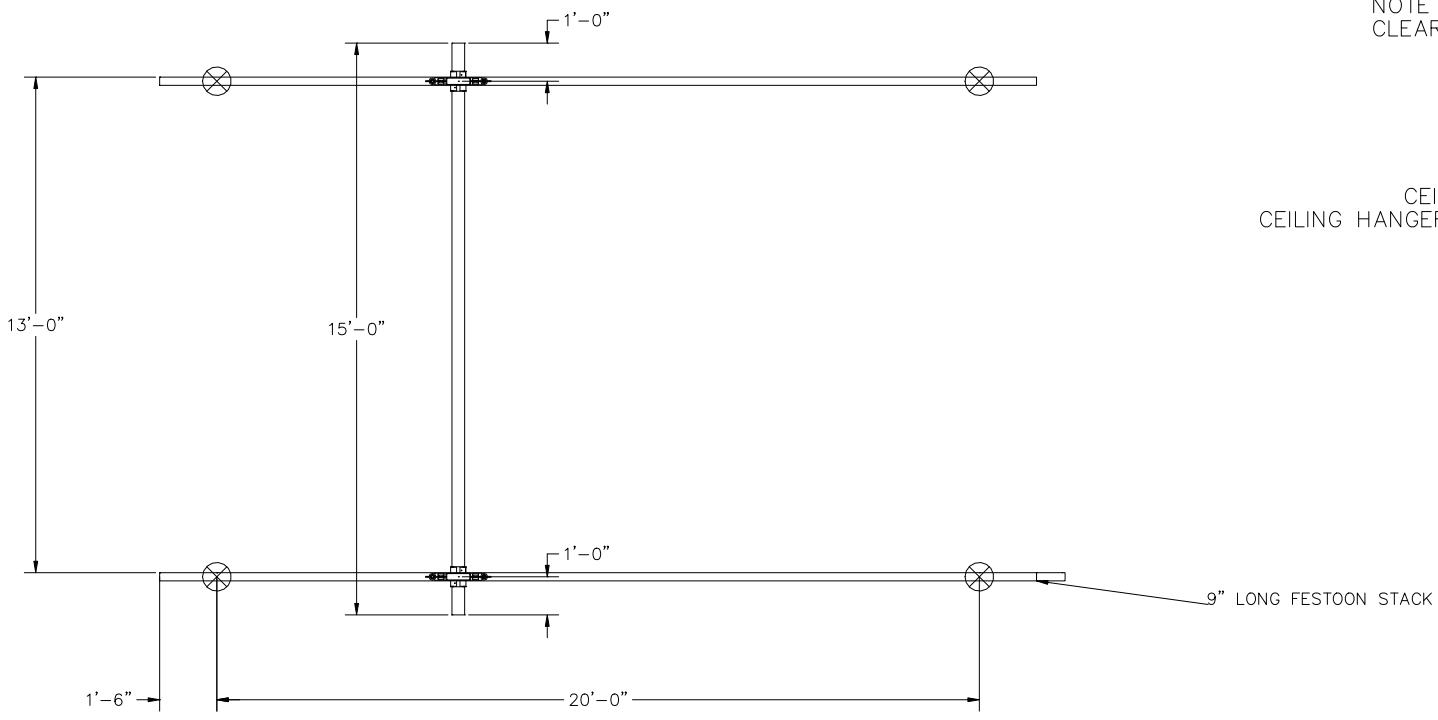


CONFIDENTIAL

SWAY BRACING IS REQUIRED., REFER TO MANUAL.  
 HANGER DETAIL SHOWN IS OUR STANDARD DESIGN AND MAY NOT  
 REPRESENT THE ACTUAL HANGER DESIGN UTILIZED ON THIS SYSTEM.

NOTE C: MINIMUM THD ROD DROP MUST MAINTAIN 3" OF  
 CLEARANCE BETWEEN BRIDGE AND LOWEST OBSTRUCTION.  
 BRIDGE TROLLEY TRAVEL IS 13'-9 13/16"  
 ENDRUCK TRAVEL IS 20'-9 7/16"

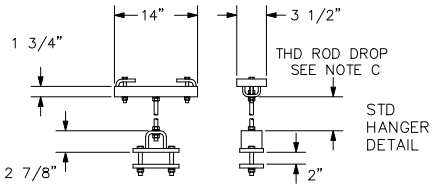
CEILING HANGER LOAD AS CONFIGURED: 838 LBS  
 CEILING HANGER LOAD BASED ON RUNWAY SERIES AT CAPACITY: 838 LBS



CRANE INFORMATION	
CAPACITY: 500 LBS/BR	
BRIDGE OAL: 15'	
BRIDGE SERIES: 500	
RUNWAY OAL: 23'	
RUNWAY SERIES: 500	
TOLERANCE: ±1/8	
QUANTITY: 1	
GLCS500-15AL-23	
BOHL CRANE INC	

<b>GORBEL</b> 600 FISHERS RUN P.O. BOX 593 FISHERS, NY 14453-0593	
BY: GORBEL	DATE: JUL 21, 2023
LINE #: 0	P/N: ANTSMI00006.0A

HANGERS ARE ON 20' CENTERS MAXIMUM WITH A  
 48" CANTILEVER ON EACH END STANDARD.  
 X = HANGER POINT  
 HANGER POSITION TOLERANCE = +/- 3 1/2"  
 HANGERS MUST BE WITHIN 48" OF SPLICE JOINT  
 DO NOT SCALE FROM DRAWING.  
 DIMENSIONS ARE STEEL TO STEEL AND MAY VARY.

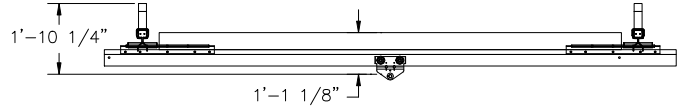
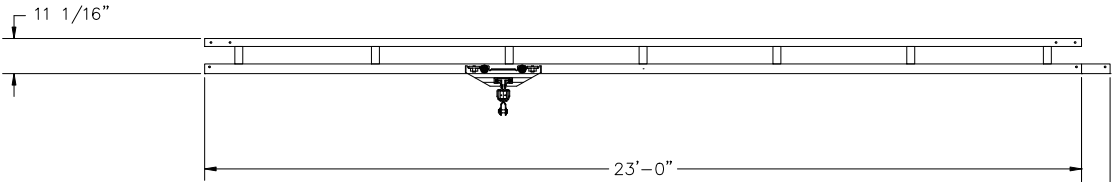
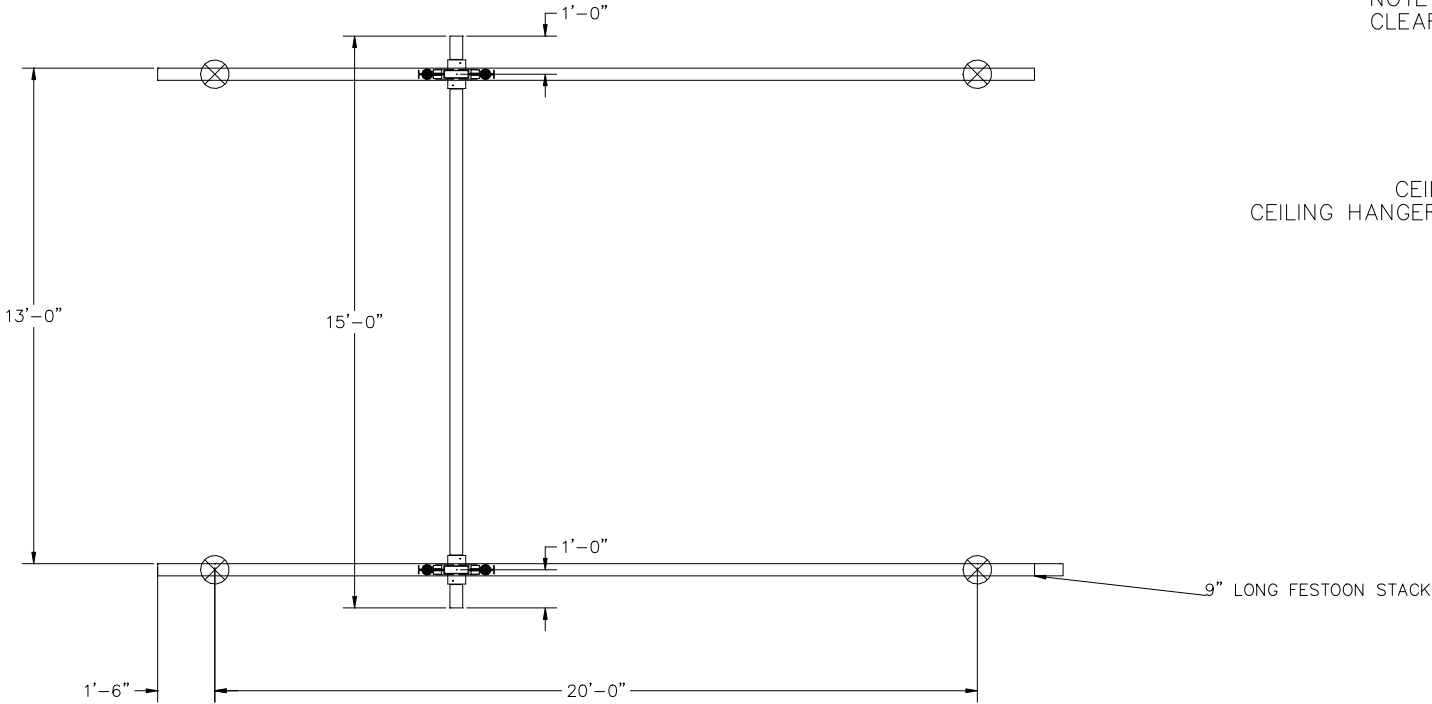


CONFIDENTIAL


SWAY BRACING IS REQUIRED., REFER TO MANUAL.  
 HANGER DETAIL SHOWN IS OUR STANDARD DESIGN AND MAY NOT  
 REPRESENT THE ACTUAL HANGER DESIGN UTILIZED ON THIS SYSTEM.  
 SYSTEM IS UTILIZING NEW ALUMINUM TRACK BRIDGE(S)

NOTE C: MINIMUM THD ROD DROP MUST MAINTAIN 3" OF  
 CLEARANCE BETWEEN BRIDGE AND LOWEST OBSTRUCTION.  
 BRIDGE TROLLEY TRAVEL IS 12'-3 5/8"  
 ENDTRUCK TRAVEL IS 20'-5 5/8"

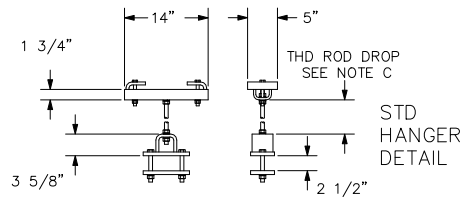
CEILING HANGER LOAD AS CONFIGURED: 1635 LBS  
 CEILING HANGER LOAD BASED ON RUNWAY SERIES AT CAPACITY: 1635 LBS



CRANE INFORMATION	
CAPACITY: 1000 LBS/BR	
BRIDGE OAL: 15'	
BRIDGE SERIES: 1000	
RUNWAY OAL: 23'	
RUNWAY SERIES: 1000	
TOLERANCE: ±1/8	
QUANTITY: 1	
GLCS1000-15AL-23	
BOHL CRANE INC	

 600 FISHERS RUN P.O. BOX 593 FISHERS, NY 14453-0593	
BY: GORBEL	DATE: JUL 21, 2023
LINE #: 0	P/N: ANTSMI00006.0A

HANGERS ARE ON 20' CENTERS MAXIMUM WITH A  
 48" CANTILEVER ON EACH END STANDARD.  
 X = HANGER POINT  
 HANGER POSITION TOLERANCE = +/- 3 1/2"  
 HANGERS MUST BE WITHIN 48" OF SPLICE JOINT  
 DO NOT SCALE FROM DRAWING.  
 DIMENSIONS ARE STEEL TO STEEL AND MAY VARY.

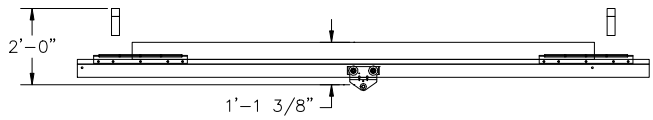
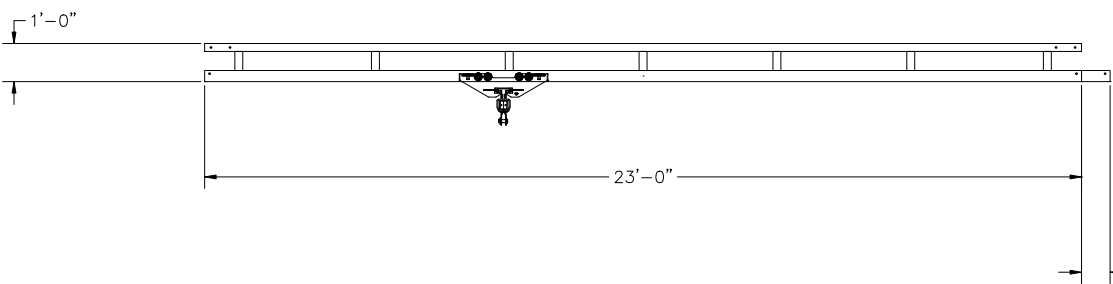
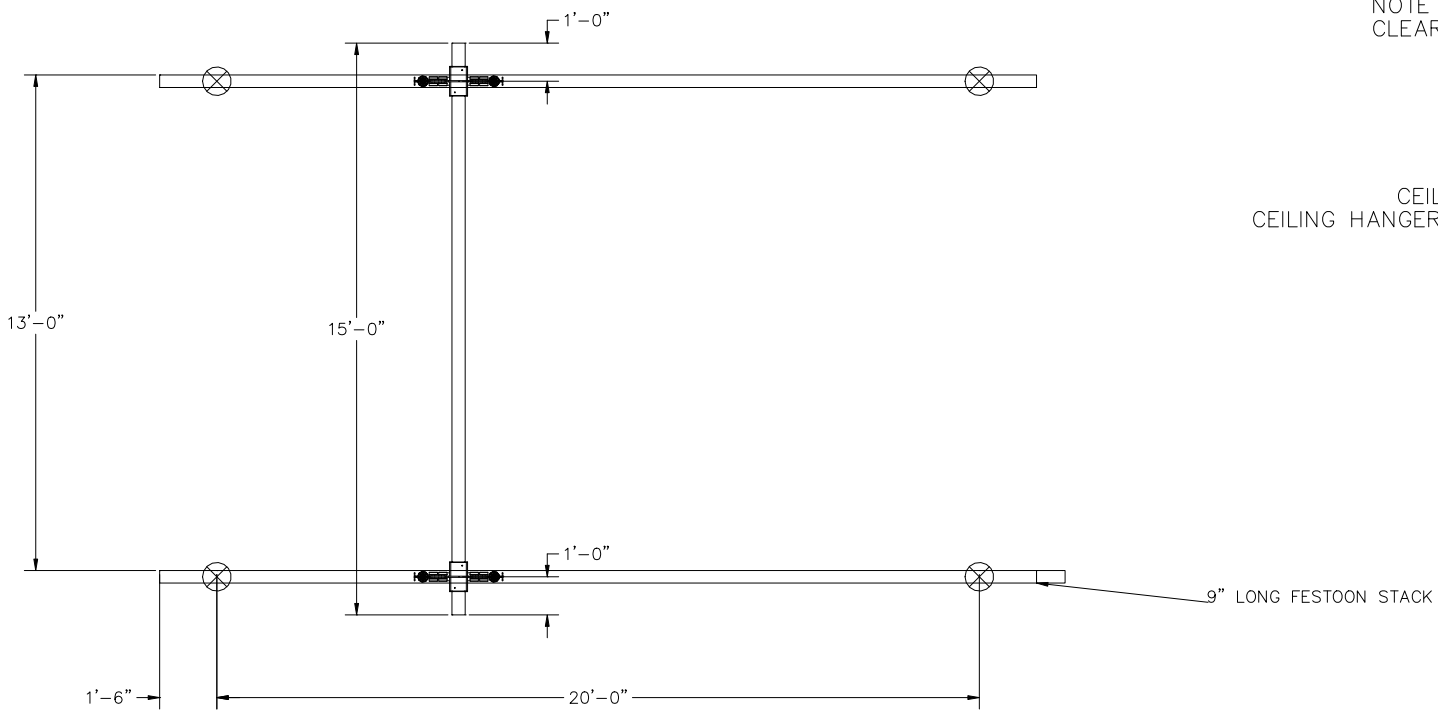


CONFIDENTIAL

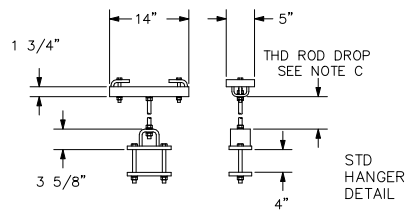
SWAY BRACING IS REQUIRED., REFER TO MANUAL.  
 HANGER DETAIL SHOWN IS OUR STANDARD DESIGN AND MAY NOT  
 REPRESENT THE ACTUAL HANGER DESIGN UTILIZED ON THIS SYSTEM.  
 SYSTEM IS UTILIZING NEW ALUMINUM TRACK BRIDGE(S)

NOTE C: MINIMUM THD ROD DROP MUST MAINTAIN 3" OF  
 CLEARANCE BETWEEN BRIDGE AND LOWEST OBSTRUCTION.  
 BRIDGE TROLLEY TRAVEL IS 12'-3 1/4"  
 ENDTRUCK TRAVEL IS 20'-1 5/8"

CEILING HANGER LOAD AS CONFIGURED: 3090 LBS  
 CEILING HANGER LOAD BASED ON RUNWAY SERIES AT CAPACITY: 3090 LBS



HANGERS ARE ON 20' CENTERS MAXIMUM WITH A  
 48" CANTILEVER ON EACH END STANDARD.  
 X = HANGER POINT  
 HANGER POSITION TOLERANCE = +/- 3 1/2"  
 HANGERS MUST BE WITHIN 48" OF SPLICE JOINT  
 DO NOT SCALE FROM DRAWING.  
 DIMENSIONS ARE STEEL TO STEEL AND MAY VARY.



CRANE INFORMATION	
CAPACITY: 2000 LBS/BR	
BRIDGE OAL: 15'	
BRIDGE SERIES: 2000	
RUNWAY OAL: 23'	
RUNWAY SERIES: 2000	
TOLERANCE: ±1/8	
QUANTITY: 1	
GLCS2000-15AL-23	
BOHL CRANE INC	

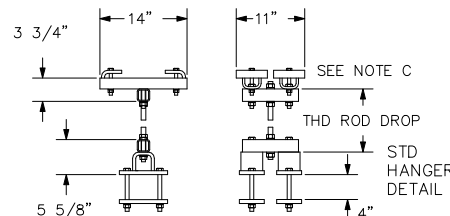
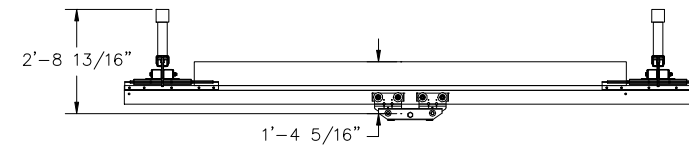
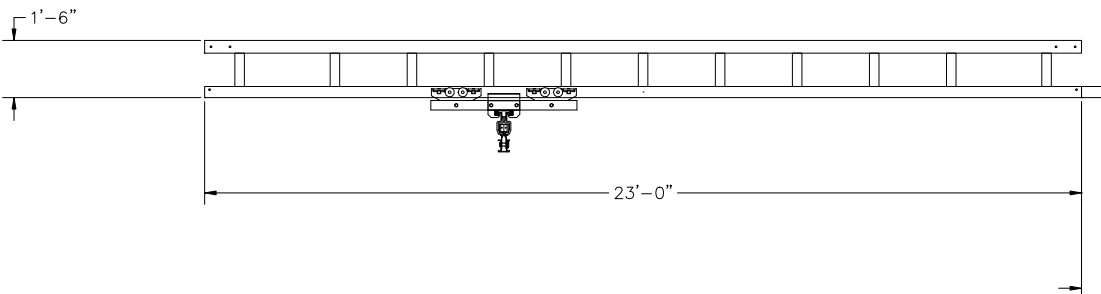
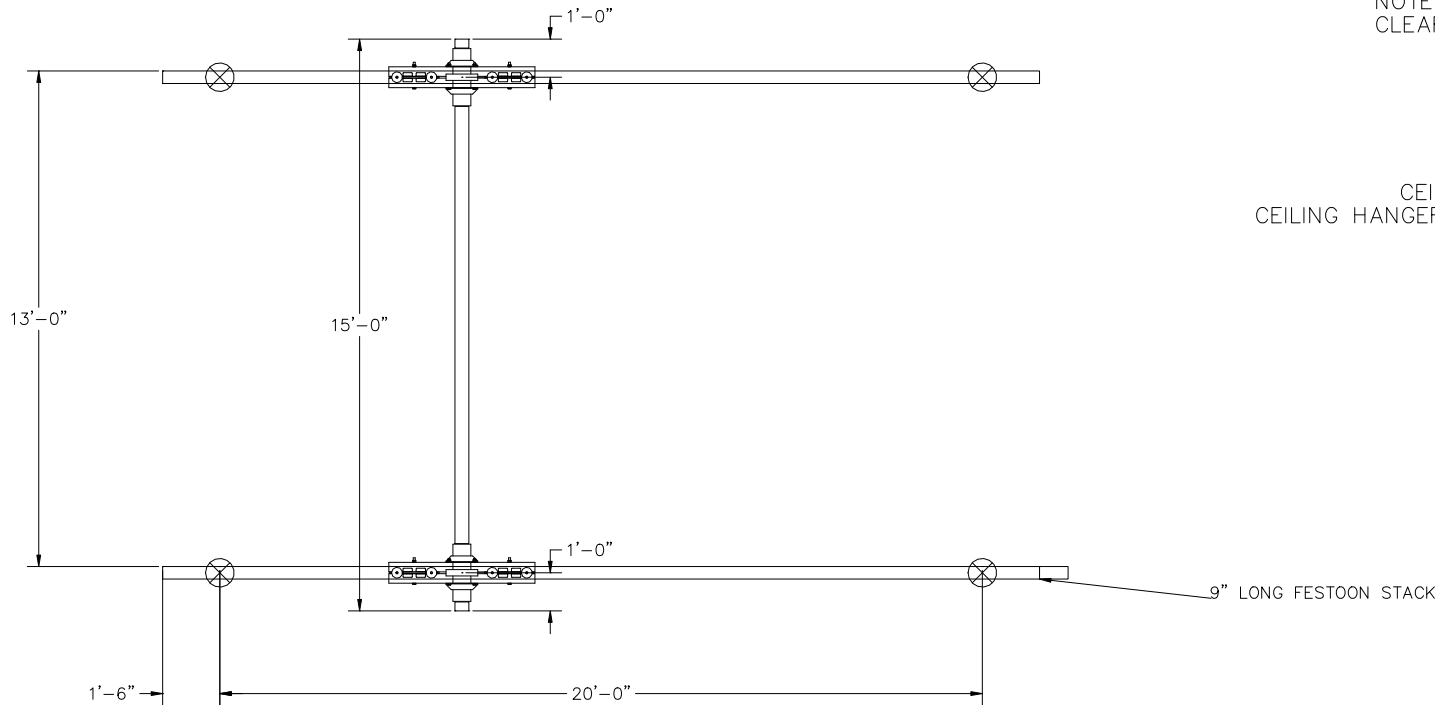
<b>GORBEL</b> 600 FISHERS RUN P.O. BOX 593 FISHERS, NY 14453-0593	
BY: GORBEL	DATE: JUL 21, 2023
LINE #: 0	P/N: ANTSMI00006.0A

CONFIDENTIAL


SWAY BRACING IS REQUIRED., REFER TO MANUAL.  
 HANGER DETAIL SHOWN IS OUR STANDARD DESIGN AND MAY NOT  
 REPRESENT THE ACTUAL HANGER DESIGN UTILIZED ON THIS SYSTEM.  
 SYSTEM IS UTILIZING NEW ALUMINUM TRACK BRIDGE(S)

NOTE C: MINIMUM THD ROD DROP MUST MAINTAIN 3" OF  
 CLEARANCE BETWEEN BRIDGE AND LOWEST OBSTRUCTION.  
 BRIDGE TROLLEY TRAVEL IS 10'-8 15/16"  
 ENDTRUCK TRAVEL IS 18'-7 1/2"

CEILING HANGER LOAD AS CONFIGURED: 6103 LBS  
 CEILING HANGER LOAD BASED ON RUNWAY SERIES AT CAPACITY: 6103 LBS



HANGERS ARE ON 20' CENTERS MAXIMUM WITH A  
 48" CANTILEVER ON EACH END STANDARD.  
 X = HANGER POINT  
 HANGER POSITION TOLERANCE = +/- 3 1/2"  
 HANGERS MUST BE WITHIN 48" OF SPLICE JOINT  
 DO NOT SCALE FROM DRAWING.  
 DIMENSIONS ARE STEEL TO STEEL AND MAY VARY.

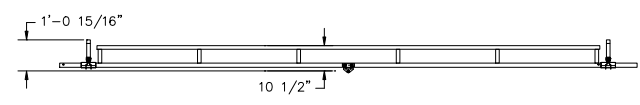
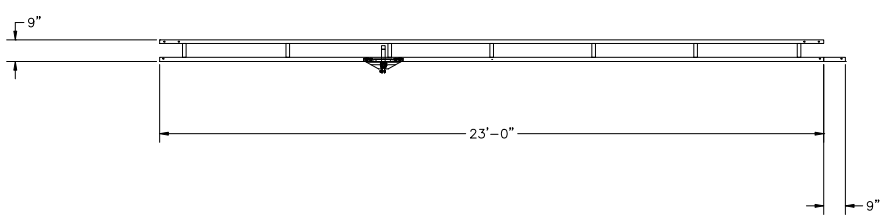
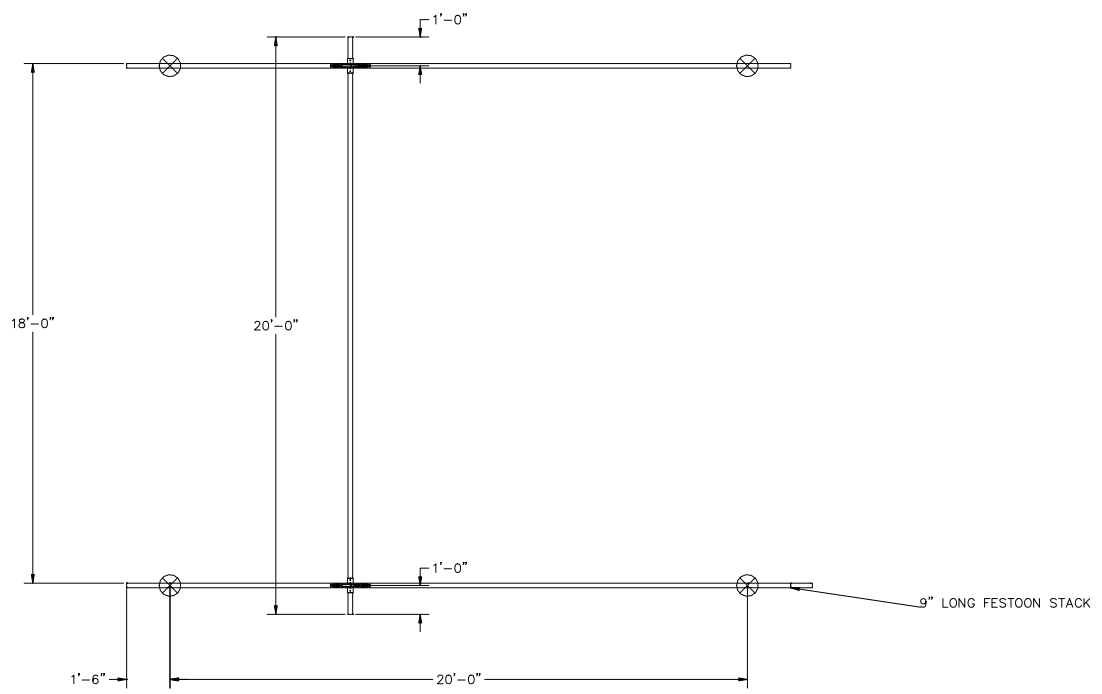
CRANE INFORMATION		 600 FISHERS RUN P.O. BOX 593 FISHERS, NY 14453-0593	
CAPACITY: 4000 LBS/BR			
BRIDGE OAL: 15'			
BRIDGE SERIES: 4000		BY: GORBEL	
RUNWAY OAL: 23'		DATE: JUL 21, 2023	
RUNWAY SERIES: 4000		LINE #: 0	
TOLERANCE: ±1/8		P/N: ANTSMI00006.0A	
QUANTITY: 1		GLCS4000-15AL-23	
BOHL CRANE INC			

CONFIDENTIAL

SWAY BRACING IS REQUIRED., REFER TO MANUAL.  
 HANGER DETAIL SHOWN IS OUR STANDARD DESIGN AND MAY NOT  
 REPRESENT THE ACTUAL HANGER DESIGN UTILIZED ON THIS SYSTEM.

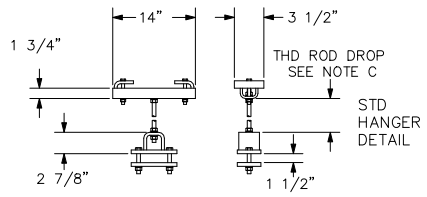
NOTE C: MINIMUM THD ROD DROP MUST MAINTAIN 3" OF  
 CLEARANCE BETWEEN BRIDGE AND LOWEST OBSTRUCTION.  
 BRIDGE TROLLEY TRAVEL IS 17'-11 7/8"  
 ENDTRUCK TRAVEL IS 21'-2 1/2"

CEILING HANGER LOAD AS CONFIGURED: 464 LBS  
 CEILING HANGER LOAD BASED ON RUNWAY SERIES AT CAPACITY: 464 LBS



CRANE INFORMATION		<b>GORBEL</b> 600 FISHERS RUN P.O. BOX 593 FISHERS, NY 14453-0593	
CAPACITY: 250 LBS/BR BRIDGE OAL: 20' BRIDGE SERIES: 250 RUNWAY OAL: 23' RUNWAY SERIES: 250			
TOLERANCE: ±1/8		BY: GORBEL	DATE: JUL 21, 2023
QUANTITY: 1		LINE #: 0	P/N: ANTSMI00006.0A
GLCS250-20-23			
BOHL CRANE INC			

HANGERS ARE ON 20' CENTERS MAXIMUM WITH A  
 48" CANTILEVER ON EACH END STANDARD.  
 X = HANGER POINT  
 HANGER POSITION TOLERANCE = +/- 3 1/2"  
 HANGERS MUST BE WITHIN 48" OF SPLICE JOINT  
 DO NOT SCALE FROM DRAWING.  
 DIMENSIONS ARE STEEL TO STEEL AND MAY VARY.

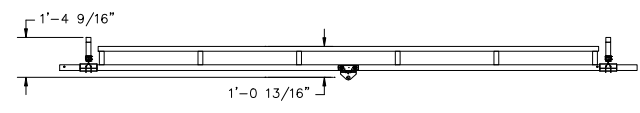
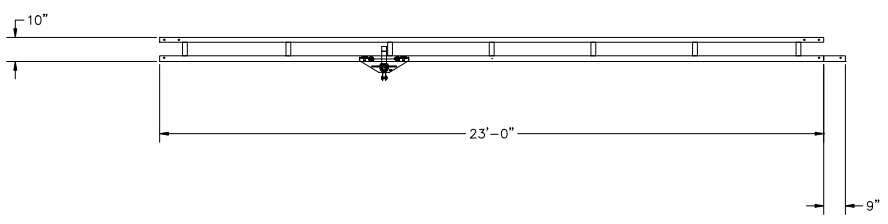
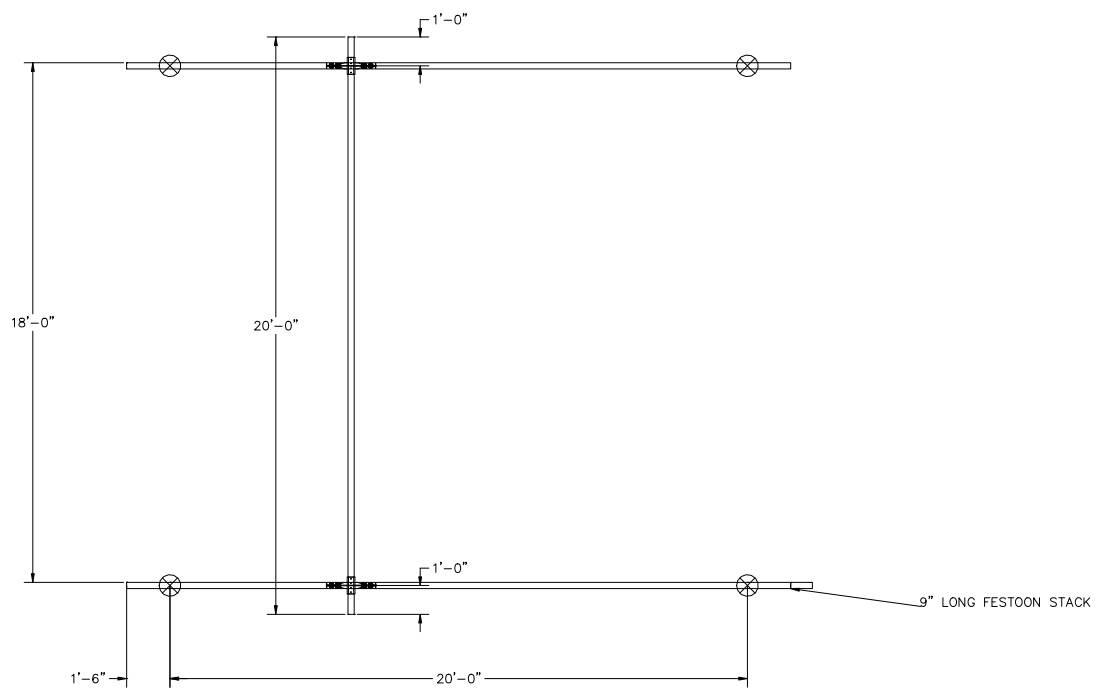


CONFIDENTIAL

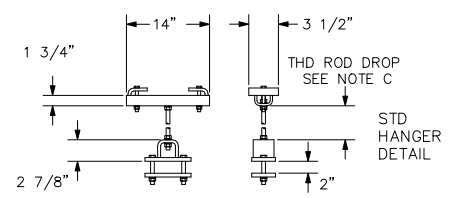
SWAY BRACING IS REQUIRED., REFER TO MANUAL.  
 HANGER DETAIL SHOWN IS OUR STANDARD DESIGN AND MAY NOT  
 REPRESENT THE ACTUAL HANGER DESIGN UTILIZED ON THIS SYSTEM.

NOTE C: MINIMUM THD ROD DROP MUST MAINTAIN 3" OF  
 CLEARANCE BETWEEN BRIDGE AND LOWEST OBSTRUCTION.  
 BRIDGE TROLLEY TRAVEL IS 17'-7"  
 ENDTRUCK TRAVEL IS 20'-9 7/16"

CEILING HANGER LOAD AS CONFIGURED: 874 LBS  
 CEILING HANGER LOAD BASED ON RUNWAY SERIES AT CAPACITY: 874 LBS



HANGERS ARE ON 20' CENTERS MAXIMUM WITH A  
 48" CANTILEVER ON EACH END STANDARD.  
 X = HANGER POINT  
 HANGER POSITION TOLERANCE = +/- 3 1/2"  
 HANGERS MUST BE WITHIN 48" OF SPLICE JOINT  
 DO NOT SCALE FROM DRAWING.  
 DIMENSIONS ARE STEEL TO STEEL AND MAY VARY.



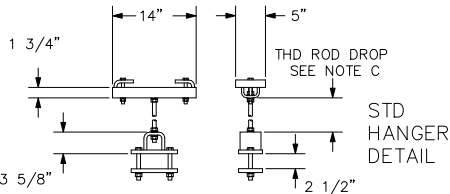
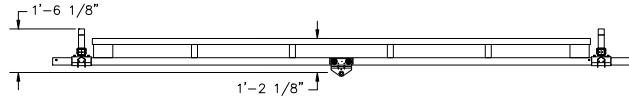
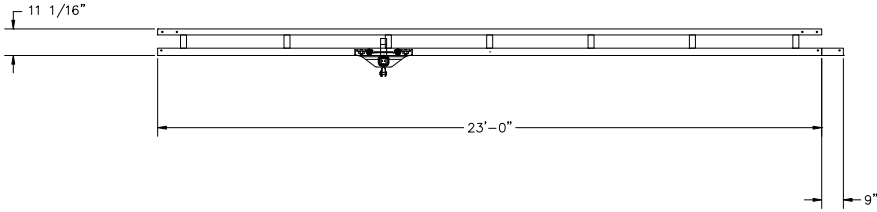
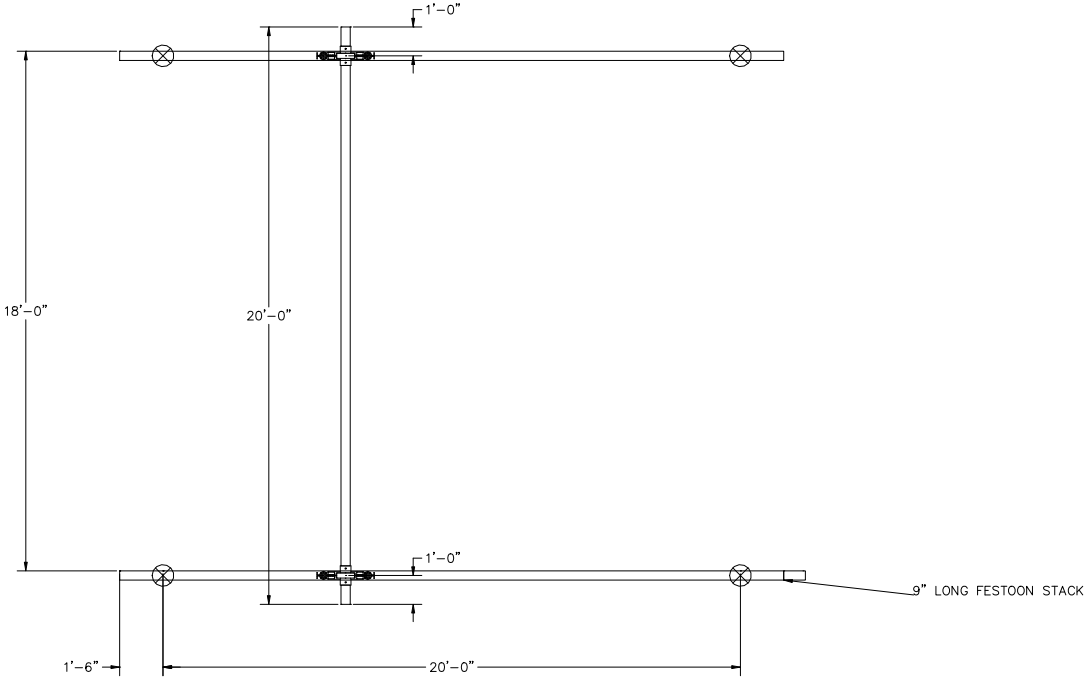
CRANE INFORMATION		<b>GORBEL</b> 600 FISHERS RUN P.O. BOX 593 FISHERS, NY 14453-0593	
CAPACITY: 500 LBS/BR BRIDGE OAL: 20' BRIDGE SERIES: 500 RUNWAY OAL: 23' RUNWAY SERIES: 500			
TOLERANCE: ±1/8		BY: GORBEL	DATE: JUL 21, 2023
QUANTITY: 1		LINE #: 0	P/N: ANTSMI00006.0A
GLCS500-20-23			
BOHL CRANE INC			

CONFIDENTIAL

SWAY BRACING IS REQUIRED., REFER TO MANUAL.  
 HANGER DETAIL SHOWN IS OUR STANDARD DESIGN AND MAY NOT  
 REPRESENT THE ACTUAL HANGER DESIGN UTILIZED ON THIS SYSTEM.

NOTE C: MINIMUM THD ROD DROP MUST MAINTAIN 3" OF  
 CLEARANCE BETWEEN BRIDGE AND LOWEST OBSTRUCTION.  
 BRIDGE TROLLEY TRAVEL IS 17'-4 7/16"  
 ENDTRUCK TRAVEL IS 20'-5 5/8"

CEILING HANGER LOAD AS CONFIGURED: 1691 LBS  
 CEILING HANGER LOAD BASED ON RUNWAY SERIES AT CAPACITY: 1691 LBS



CRANE INFORMATION	
CAPACITY: 1000 LBS/BR	
BRIDGE OAL: 20'	
BRIDGE SERIES: 1000	
RUNWAY OAL: 23'	
RUNWAY SERIES: 1000	
TOLERANCE: ±1/8	
QUANTITY: 1	
GLCS1000-20-23	
BOHL CRANE INC	

<b>GORBEL</b> 600 FISHERS RUN P.O. BOX 593 FISHERS, NY 14453-0593	
BY: GORBEL	DATE: JUL 21, 2023
LINE #: 0	P/N: ANTSMI00006.0A

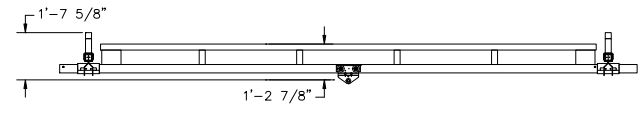
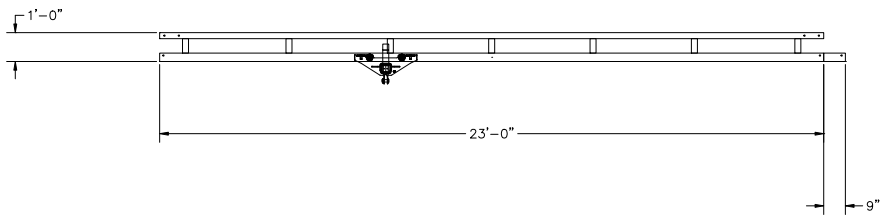
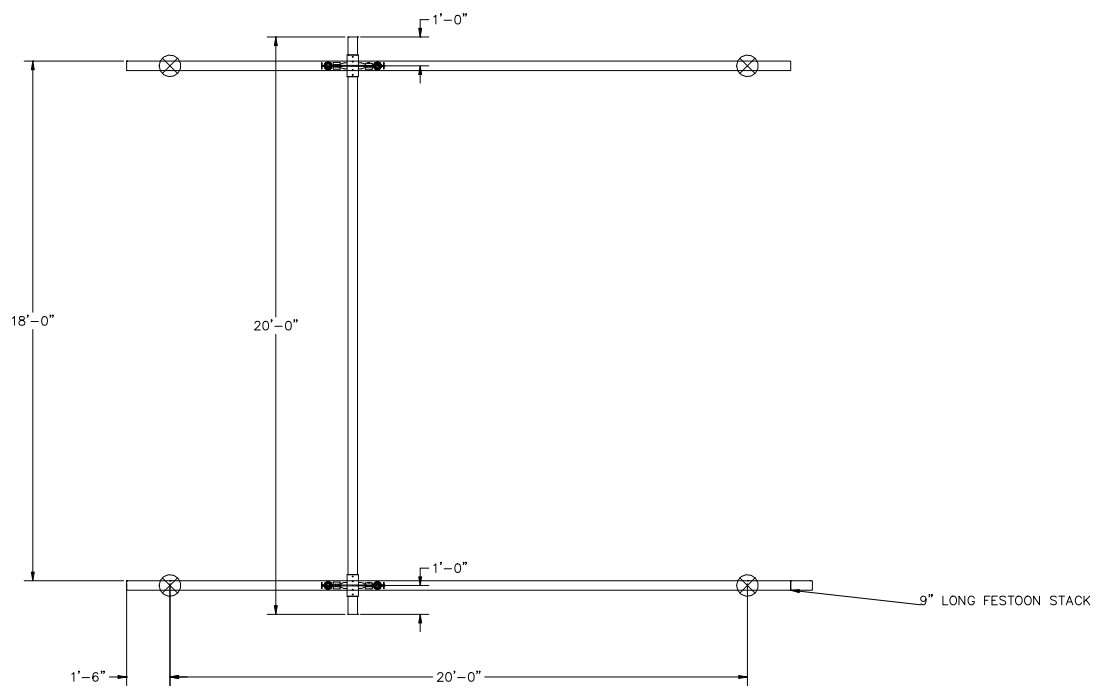
HANGERS ARE ON 20' CENTERS MAXIMUM WITH A  
 48" CANTILEVER ON EACH END STANDARD.  
 X = HANGER POINT  
 HANGER POSITION TOLERANCE = +/- 3 1/2"  
 HANGERS MUST BE WITHIN 48" OF SPLICE JOINT  
 DO NOT SCALE FROM DRAWING.  
 DIMENSIONS ARE STEEL TO STEEL AND MAY VARY.

CONFIDENTIAL

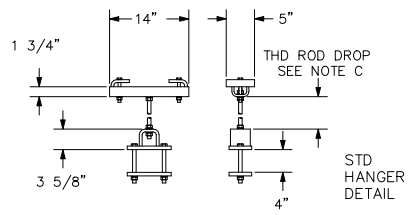
SWAY BRACING IS REQUIRED., REFER TO MANUAL.  
 HANGER DETAIL SHOWN IS OUR STANDARD DESIGN AND MAY NOT  
 REPRESENT THE ACTUAL HANGER DESIGN UTILIZED ON THIS SYSTEM.

NOTE C: MINIMUM THD ROD DROP MUST MAINTAIN 3" OF  
 CLEARANCE BETWEEN BRIDGE AND LOWEST OBSTRUCTION.  
 BRIDGE TROLLEY TRAVEL IS 17'-3 9/16"  
 ENDTRUCK TRAVEL IS 20'-3 1/2"

CEILING HANGER LOAD AS CONFIGURED: 3161 LBS  
 CEILING HANGER LOAD BASED ON RUNWAY SERIES AT CAPACITY: 3161 LBS



HANGERS ARE ON 20' CENTERS MAXIMUM WITH A  
 48" CANTILEVER ON EACH END STANDARD.  
 X = HANGER POINT  
 HANGER POSITION TOLERANCE = +/- 3 1/2"  
 HANGERS MUST BE WITHIN 48" OF SPLICE JOINT  
 DO NOT SCALE FROM DRAWING.  
 DIMENSIONS ARE STEEL TO STEEL AND MAY VARY.



CRANE INFORMATION		<b>GORBEL</b> 600 FISHERS RUN P.O. BOX 593 FISHERS, NY 14453-0593	
CAPACITY: 2000 LBS/BR			
BRIDGE OAL: 20'		GENERAL ARRANGEMENT	
BRIDGE SERIES: 2000			
RUNWAY OAL: 23'			
RUNWAY SERIES: 2000			
TOLERANCE: ±1/8		BY: GORBEL	DATE: JUL 21, 2023
QUANTITY: 1		LINE #: 0	P/N: ANTSMI00006.0A
GLCS2000-20-23			
BOHL CRANE INC			

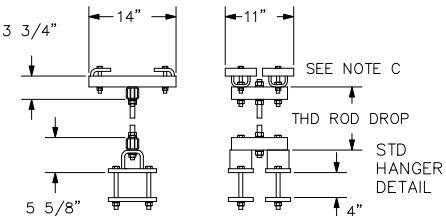
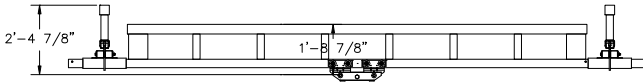
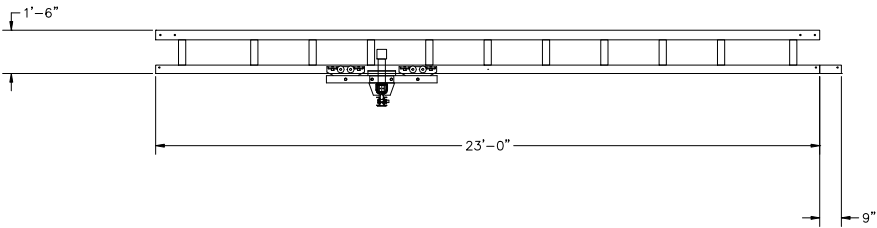
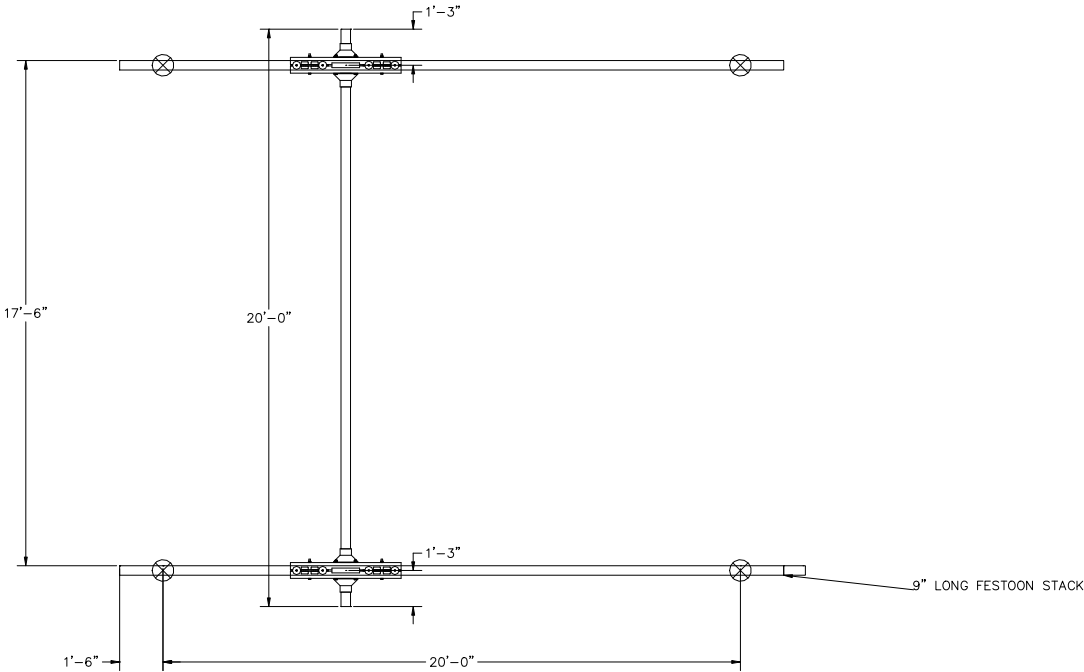


CONFIDENTIAL

SWAY BRACING IS REQUIRED., REFER TO MANUAL.  
 HANGER DETAIL SHOWN IS OUR STANDARD DESIGN AND MAY NOT  
 REPRESENT THE ACTUAL HANGER DESIGN UTILIZED ON THIS SYSTEM.

NOTE C: MINIMUM THD ROD DROP MUST MAINTAIN 3" OF  
 CLEARANCE BETWEEN BRIDGE AND LOWEST OBSTRUCTION.  
 BRIDGE TROLLEY TRAVEL IS 15'-6 1/16"  
 ENDTRUCK TRAVEL IS 18'-7 1/2"

CEILING HANGER LOAD AS CONFIGURED: 6191 LBS  
 CEILING HANGER LOAD BASED ON RUNWAY SERIES AT CAPACITY: 6191 LBS



HANGERS ARE ON 20' CENTERS MAXIMUM WITH A  
 48" CANTILEVER ON EACH END STANDARD.  
 X = HANGER POINT  
 HANGER POSITION TOLERANCE = +/- 3 1/2"  
 HANGERS MUST BE WITHIN 48" OF SPLICE JOINT  
 DO NOT SCALE FROM DRAWING.  
 DIMENSIONS ARE STEEL TO STEEL AND MAY VARY.

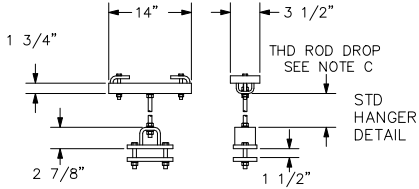
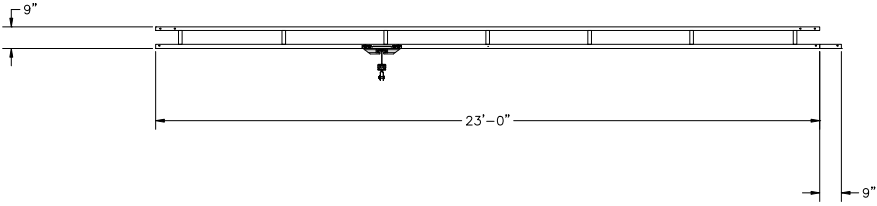
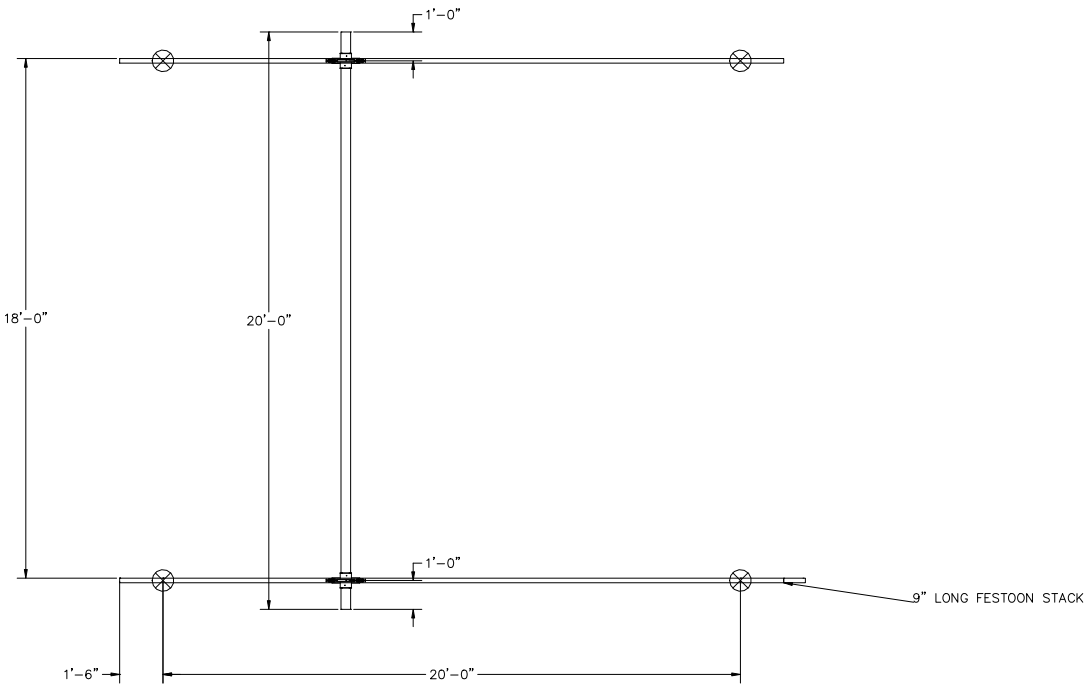
CRANE INFORMATION CAPACITY: 4000 LBS/BR BRIDGE OAL: 20' BRIDGE SERIES: 4000 RUNWAY OAL: 23' RUNWAY SERIES: 4000		<b>GORBEL</b> 600 FISHERS RUN P.O. BOX 593 FISHERS, NY 14453-0593	
TOLERANCE: ±1/8 QUANTITY: 1 GLCS4000-20-23		GENERAL ARRANGEMENT BY: GORBEL LINE #: 0 DATE: JUL 21, 2023 P/N: ANTSMI00006.0A	
BOHL CRANE INC			

CONFIDENTIAL

SWAY BRACING IS REQUIRED., REFER TO MANUAL.  
 HANGER DETAIL SHOWN IS OUR STANDARD DESIGN AND MAY NOT  
 REPRESENT THE ACTUAL HANGER DESIGN UTILIZED ON THIS SYSTEM.

NOTE C: MINIMUM THD ROD DROP MUST MAINTAIN 3" OF  
 CLEARANCE BETWEEN BRIDGE AND LOWEST OBSTRUCTION.  
 BRIDGE TROLLEY TRAVEL IS 18'-9 13/16"  
 ENDRUCK TRAVEL IS 20'-10 3/8"

CEILING HANGER LOAD AS CONFIGURED: 456 LBS  
 CEILING HANGER LOAD BASED ON RUNWAY SERIES AT CAPACITY: 456 LBS



CRANE INFORMATION	
CAPACITY: 250 LBS/BR	
BRIDGE OAL: 20'	
BRIDGE SERIES: 250	
RUNWAY OAL: 23'	
RUNWAY SERIES: 250	
TOLERANCE: ±1/8	
QUANTITY: 1	
GLCS250-20AL-23	
BOHL CRANE INC	

<h1>GORBEL</h1> 600 FISHERS RUN P.O. BOX 593 FISHERS, NY 14453-0593	
BY: GORBEL	DATE: JUL 21, 2023
LINE #: 0	P/N: ANTSMI00006.0A

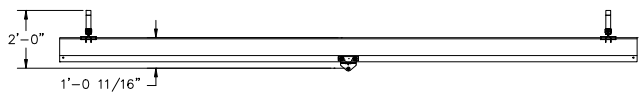
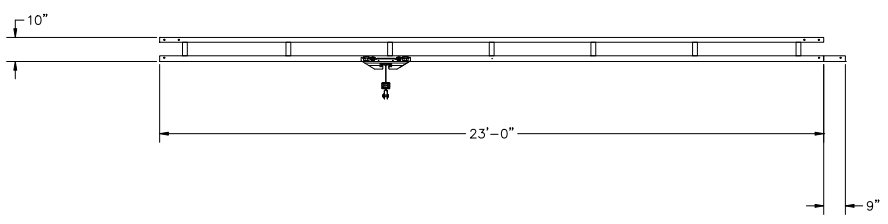
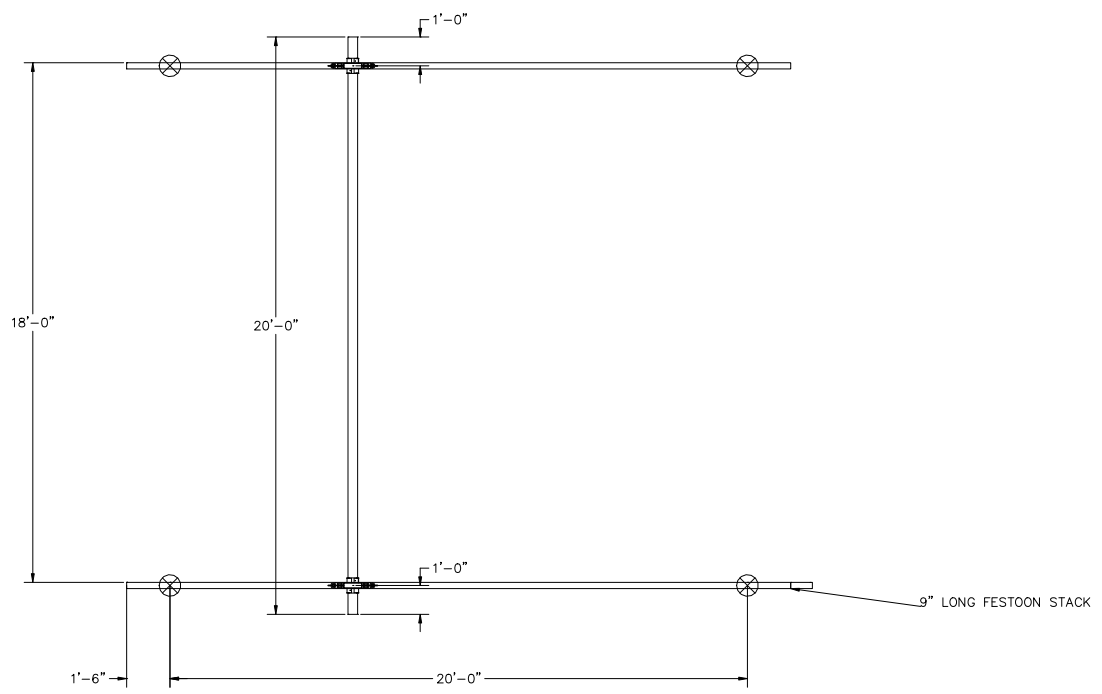
HANGERS ARE ON 20' CENTERS MAXIMUM WITH A  
 48" CANTILEVER ON EACH END STANDARD.  
 X = HANGER POINT  
 HANGER POSITION TOLERANCE = +/- 3 1/2"  
 HANGERS MUST BE WITHIN 48" OF SPLICE JOINT  
 DO NOT SCALE FROM DRAWING.  
 DIMENSIONS ARE STEEL TO STEEL AND MAY VARY.

CONFIDENTIAL

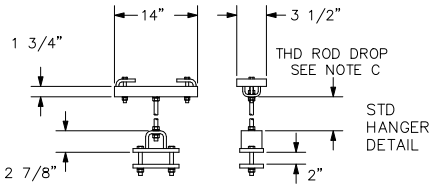
SWAY BRACING IS REQUIRED., REFER TO MANUAL.  
 HANGER DETAIL SHOWN IS OUR STANDARD DESIGN AND MAY NOT  
 REPRESENT THE ACTUAL HANGER DESIGN UTILIZED ON THIS SYSTEM.

NOTE C: MINIMUM THD ROD DROP MUST MAINTAIN 3" OF  
 CLEARANCE BETWEEN BRIDGE AND LOWEST OBSTRUCTION.  
 BRIDGE TROLLEY TRAVEL IS 18'-9 13/16"  
 ENDTRUCK TRAVEL IS 20'-9 7/16"

CEILING HANGER LOAD AS CONFIGURED: 850 LBS  
 CEILING HANGER LOAD BASED ON RUNWAY SERIES AT CAPACITY: 850 LBS



HANGERS ARE ON 20' CENTERS MAXIMUM WITH A  
 48" CANTILEVER ON EACH END STANDARD.  
 X = HANGER POINT  
 HANGER POSITION TOLERANCE = +/- 3 1/2"  
 HANGERS MUST BE WITHIN 48" OF SPLICE JOINT  
 DO NOT SCALE FROM DRAWING.  
 DIMENSIONS ARE STEEL TO STEEL AND MAY VARY.



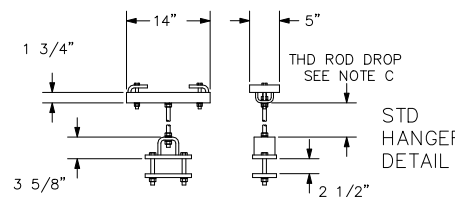
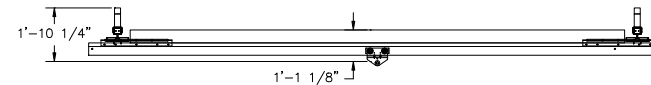
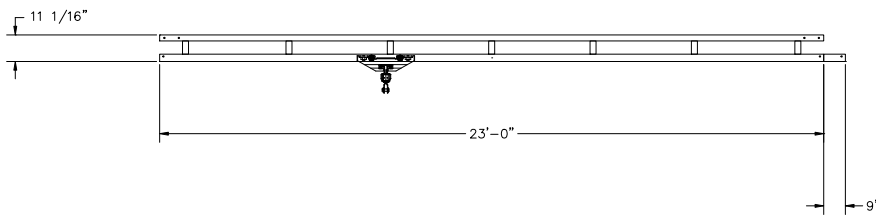
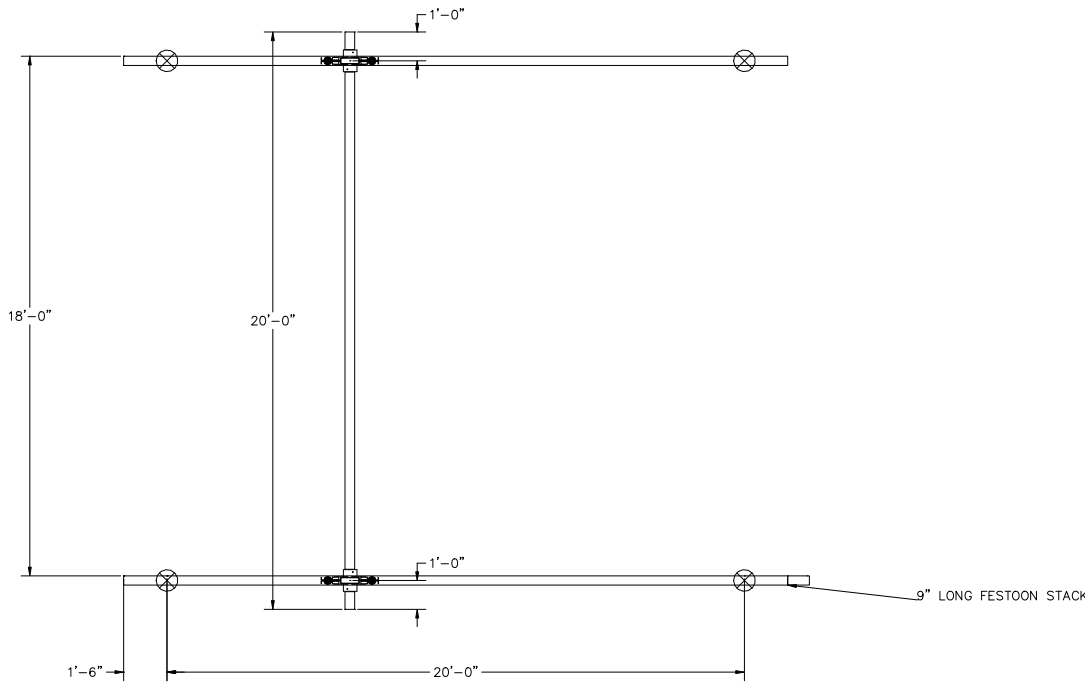
CRANE INFORMATION		<b>GORBEL</b> 600 FISHERS RUN P.O. BOX 593 FISHERS, NY 14453-0593	
CAPACITY: 500 LBS/BR BRIDGE OAL: 20' BRIDGE SERIES: 500 RUNWAY OAL: 23' RUNWAY SERIES: 500			
TOLERANCE: ±1/8		BY: GORBEL	DATE: JUL 21, 2023
QUANTITY: 1		LINE #: 0	P/N: ANTSMI00006.0A
GLCS500-20AL-23			
BOHL CRANE INC			

CONFIDENTIAL

SWAY BRACING IS REQUIRED., REFER TO MANUAL.  
 HANGER DETAIL SHOWN IS OUR STANDARD DESIGN AND MAY NOT  
 REPRESENT THE ACTUAL HANGER DESIGN UTILIZED ON THIS SYSTEM.  
 SYSTEM IS UTILIZING NEW ALUMINUM TRACK BRIDGE(S)

NOTE C: MINIMUM THD ROD DROP MUST MAINTAIN 3" OF  
 CLEARANCE BETWEEN BRIDGE AND LOWEST OBSTRUCTION.  
 BRIDGE TROLLEY TRAVEL IS 17'-1/4"  
 ENDTRUCK TRAVEL IS 20'-5 5/8"

CEILING HANGER LOAD AS CONFIGURED: 1656 LBS  
 CEILING HANGER LOAD BASED ON RUNWAY SERIES AT CAPACITY: 1656 LBS



HANGERS ARE ON 20' CENTERS MAXIMUM WITH A  
 48" CANTILEVER ON EACH END STANDARD.  
 X = HANGER POINT  
 HANGER POSITION TOLERANCE = +/- 3 1/2"  
 HANGERS MUST BE WITHIN 48" OF SPLICE JOINT  
 DO NOT SCALE FROM DRAWING.  
 DIMENSIONS ARE STEEL TO STEEL AND MAY VARY.

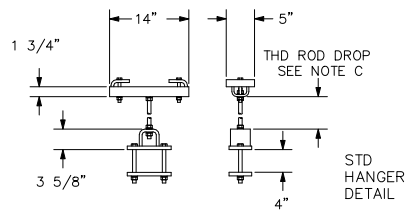
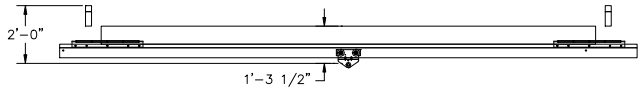
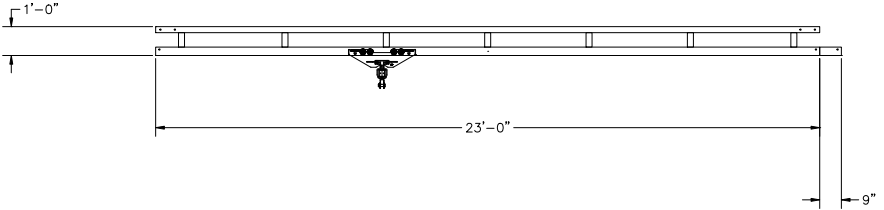
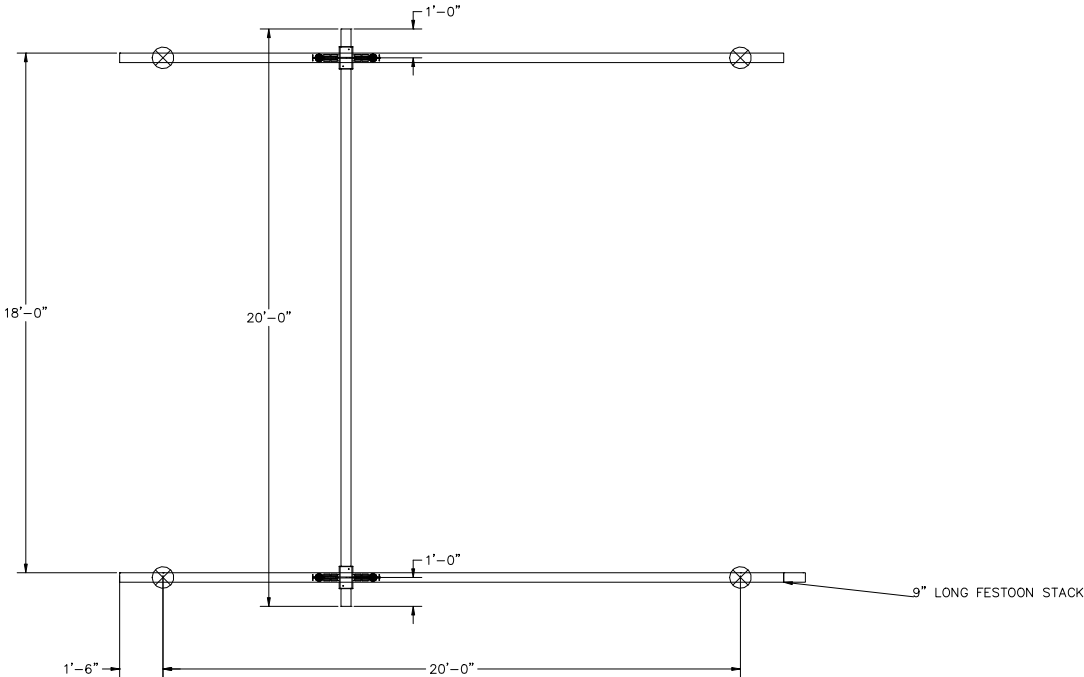
CRANE INFORMATION		<b>GORBEL</b> 600 FISHERS RUN P.O. BOX 593 FISHERS, NY 14453-0593	
CAPACITY: 1000 LBS/BR BRIDGE OAL: 20' BRIDGE SERIES: 1000 RUNWAY OAL: 23' RUNWAY SERIES: 1000			
TOLERANCE: ±1/8		BY: GORBEL	DATE: JUL 21, 2023
QUANTITY: 1		LINE #: 0	P/N: ANTSMI00006.0A
GLCS1000-20AL-23			
BOHL CRANE INC			

CONFIDENTIAL

SWAY BRACING IS REQUIRED., REFER TO MANUAL.  
 HANGER DETAIL SHOWN IS OUR STANDARD DESIGN AND MAY NOT  
 REPRESENT THE ACTUAL HANGER DESIGN UTILIZED ON THIS SYSTEM.  
 SYSTEM IS UTILIZING NEW ALUMINUM TRACK BRIDGE(S)

NOTE C: MINIMUM THD ROD DROP MUST MAINTAIN 3" OF  
 CLEARANCE BETWEEN BRIDGE AND LOWEST OBSTRUCTION.  
 BRIDGE TROLLEY TRAVEL IS 16'-11 7/8"  
 ENDTRUCK TRAVEL IS 20'-1 5/8"

CEILING HANGER LOAD AS CONFIGURED: 3123 LBS  
 CEILING HANGER LOAD BASED ON RUNWAY SERIES AT CAPACITY: 3123 LBS



HANGERS ARE ON 20' CENTERS MAXIMUM WITH A  
 48" CANTILEVER ON EACH END STANDARD.  
 X = HANGER POINT  
 HANGER POSITION TOLERANCE = +/- 3 1/2"  
 HANGERS MUST BE WITHIN 48" OF SPLICE JOINT  
 DO NOT SCALE FROM DRAWING.  
 DIMENSIONS ARE STEEL TO STEEL AND MAY VARY.

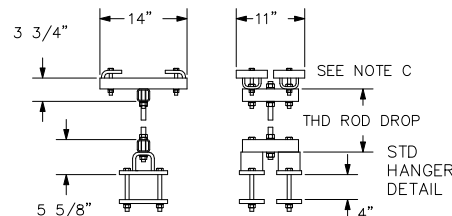
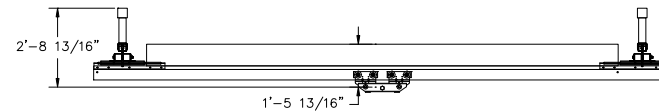
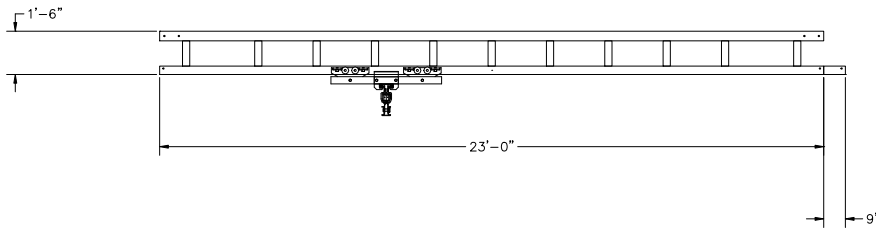
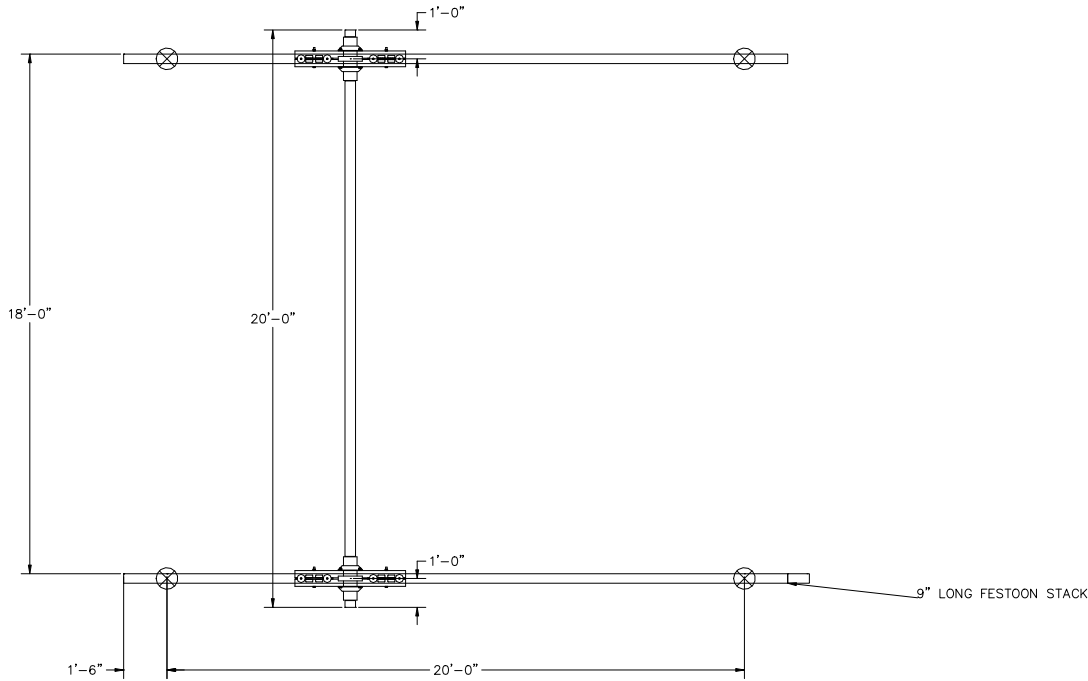
CRANE INFORMATION		<b>GORBEL</b> 600 FISHERS RUN P.O. BOX 593 FISHERS, NY 14453-0593	
CAPACITY: 2000 LBS/BR BRIDGE OAL: 20' BRIDGE SERIES: 2000 RUNWAY OAL: 23' RUNWAY SERIES: 2000			
TOLERANCE: ±1/8		BY: GORBEL	DATE: JUL 21, 2023
QUANTITY: 1		LINE #: 0	P/N: ANTSMI00006.0A
GLCS2000-20AL-23			
BOHL CRANE INC			

CONFIDENTIAL


SWAY BRACING IS REQUIRED., REFER TO MANUAL.  
 HANGER DETAIL SHOWN IS OUR STANDARD DESIGN AND MAY NOT  
 REPRESENT THE ACTUAL HANGER DESIGN UTILIZED ON THIS SYSTEM.  
 SYSTEM IS UTILIZING NEW ALUMINUM TRACK BRIDGE(S)

NOTE C: MINIMUM THD ROD DROP MUST MAINTAIN 3" OF  
 CLEARANCE BETWEEN BRIDGE AND LOWEST OBSTRUCTION.  
 BRIDGE TROLLEY TRAVEL IS 15'-8 15/16"  
 ENDTRUCK TRAVEL IS 18'-7 1/2"

CEILING HANGER LOAD AS CONFIGURED: 6150 LBS  
 CEILING HANGER LOAD BASED ON RUNWAY SERIES AT CAPACITY: 6150 LBS



HANGERS ARE ON 20' CENTERS MAXIMUM WITH A  
 48" CANTILEVER ON EACH END STANDARD.  
 X = HANGER POINT  
 HANGER POSITION TOLERANCE = +/- 3 1/2"  
 HANGERS MUST BE WITHIN 48" OF SPLICE JOINT  
 DO NOT SCALE FROM DRAWING.  
 DIMENSIONS ARE STEEL TO STEEL AND MAY VARY.

CRANE INFORMATION		 600 FISHERS RUN P.O. BOX 593 FISHERS, NY 14453-0593	
CAPACITY: 4000 LBS/BR			
BRIDGE OAL: 20'			
BRIDGE SERIES: 4000		BY: GORBEL	
RUNWAY OAL: 23'		DATE: JUL 21, 2023	
RUNWAY SERIES: 4000		LINE #: 0	
TOLERANCE: ±1/8		P/N: ANTSMI00006.0A	
QUANTITY: 1			
GLCS4000-20AL-23			
BOHL CRANE INC			