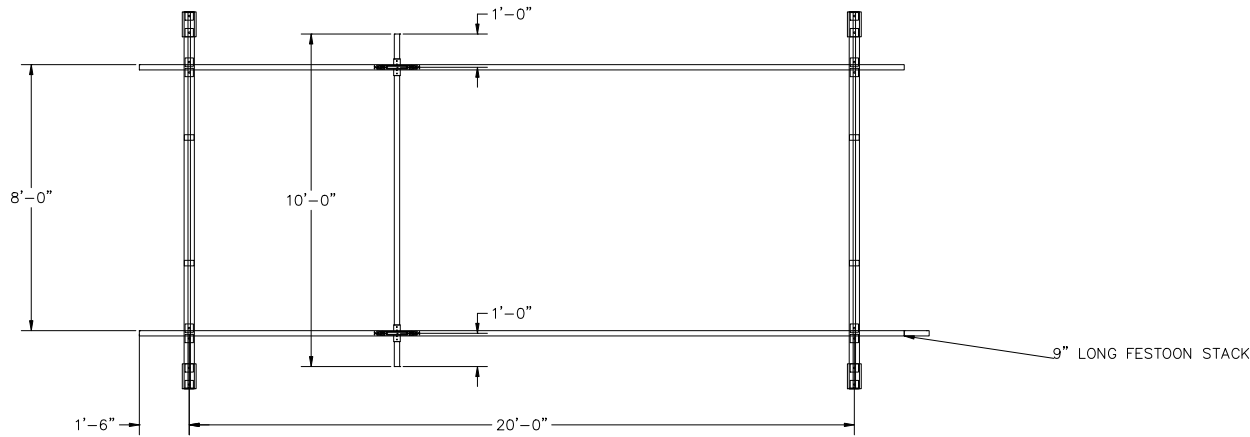


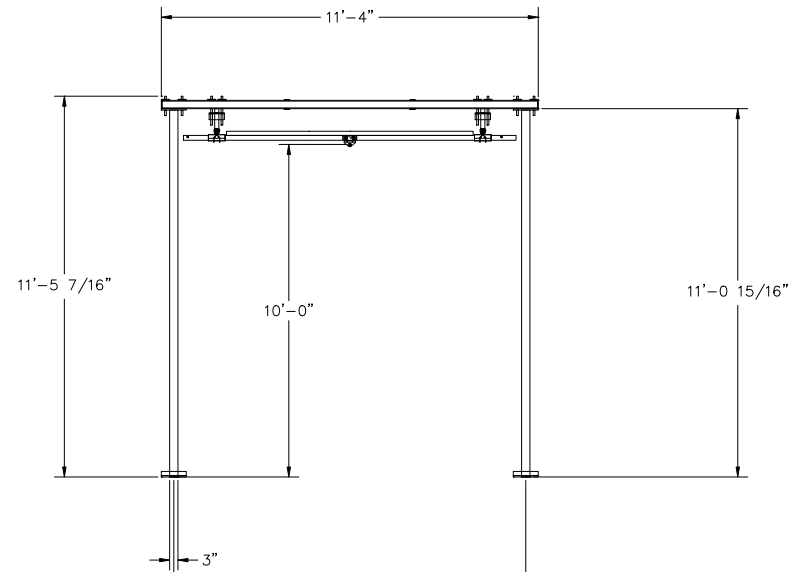
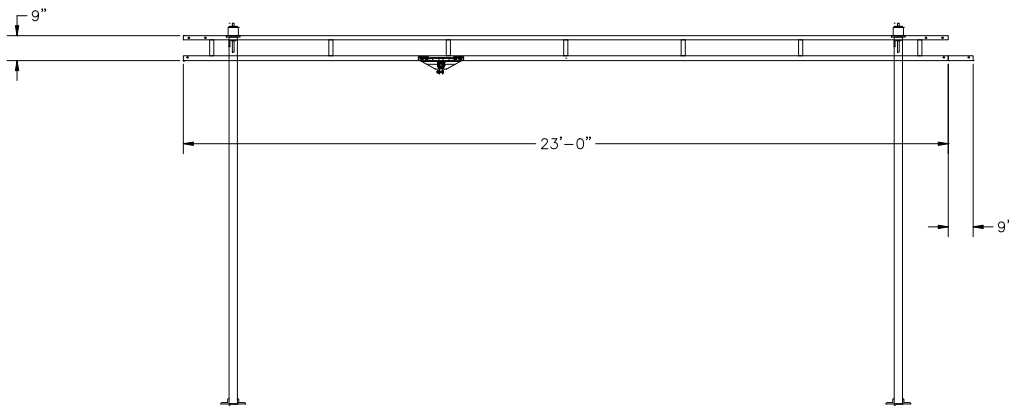
CONFIDENTIAL

SUPPORT ASSEMBLIES ARE DESIGNED TO AISC SPECIFICATIONS TO BE COMPLETELY FREESTANDING. IF NO MOVEMENT OF SUPPORT ASSEMBLIES IS REQUIRED, THEN BRACING TO BUILDING STEEL IS RECOMMENDED (NOT INCLUDED).



BRIDGE TROLLEY TRAVEL IS 8'-10 5/8"
ENDTRUCK TRAVEL IS 21'-2 1/2"

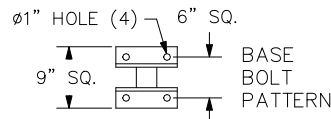
ANCHOR BOLT LOAD : 0.976 KIPS/BOLT
COLUMN AXIAL LOAD : 0.477 KIPS
OVERTURNING MOMENT : 1.385 KIPS-FT
HORIZONTAL LOAD : 182.127 LBS.



GORBEL
600 FISHERS RUN
P.O. BOX 593
FISHERS, NY 14453-0593

CRANE INFORMATION	
CAPACITY: 250 LBS/BR	
BRIDGE OAL: 10'	
BRIDGE SERIES: 250	
RUNWAY OAL: 23'	
RUNWAY SERIES: 250	
TOLERANCE: ±1/8	BY: GORBEL
QUANTITY: 1	LINE #: 0
GLCS-FS-250-10-23-10	
BOHL CRANE INC	

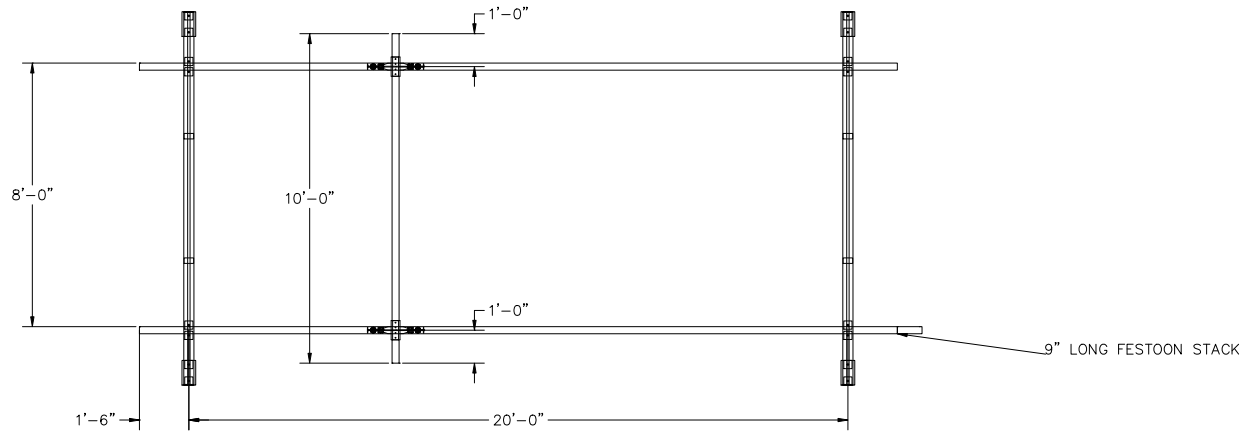
GENERAL ARRANGEMENT	
BY: GORBEL	DATE: JUL 21, 2023
LINE #: 0	P/N: ANTSMI00006.0A



HANGERS ARE ON 20' CENTERS MAXIMUM WITH A 48" CANTILEVER ON EACH END STANDARD.
HANGER POSITION TOLERANCE = +/- 2 1/2"
HANGERS MUST BE WITHIN 48" OF SPLICE JOINT
DO NOT SCALE FROM DRAWING.
DIMENSIONS ARE STEEL TO STEEL AND MAY VARY.

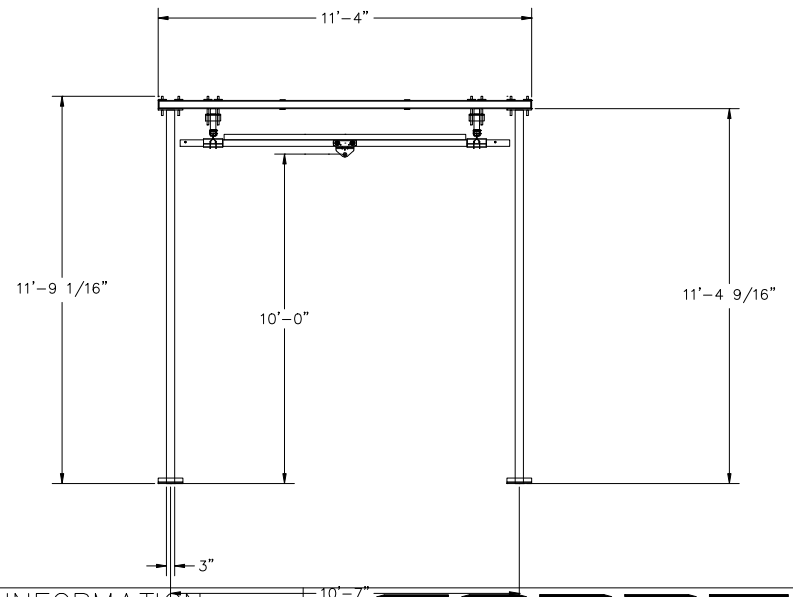
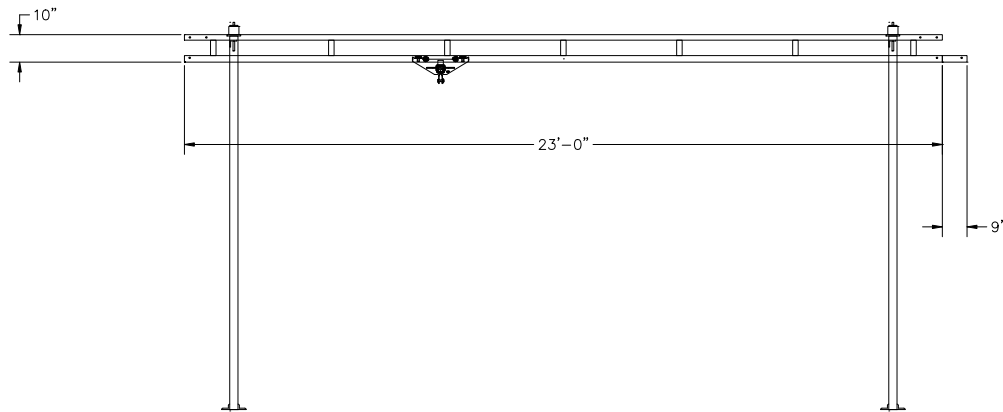
CONFIDENTIAL

SUPPORT ASSEMBLIES ARE DESIGNED TO AISC SPECIFICATIONS TO BE COMPLETELY FREESTANDING. IF NO MOVEMENT OF SUPPORT ASSEMBLIES IS REQUIRED, THEN BRACING TO BUILDING STEEL IS RECOMMENDED (NOT INCLUDED).



BRIDGE TROLLEY TRAVEL IS 8'-6 1/4"
ENDTRUCK TRAVEL IS 20'-9 7/16"

ANCHOR BOLT LOAD : 1.602 KIPS/BOLT
COLUMN AXIAL LOAD : 0.821 KIPS
OVERTURNING MOMENT : 2.273 KIPS-FT
HORIZONTAL LOAD : 237.03 LBS.



GORBEL

600 FISHERS RUN
P.O. BOX 593
FISHERS, NY 14453-0593

CRANE INFORMATION

CAPACITY: 500 LBS/BR
BRIDGE OAL: 10'
BRIDGE SERIES: 500
RUNWAY OAL: 23'
RUNWAY SERIES: 500

GENERAL ARRANGEMENT

TOLERANCE: ±1/8

BY: GORBEL

DATE: JUL 21, 2023

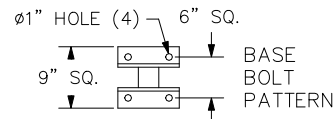
QUANTITY: 1

LINE #: 0

P/N: ANTSMI00006.0A

GLCS-FS-500-10-23-10

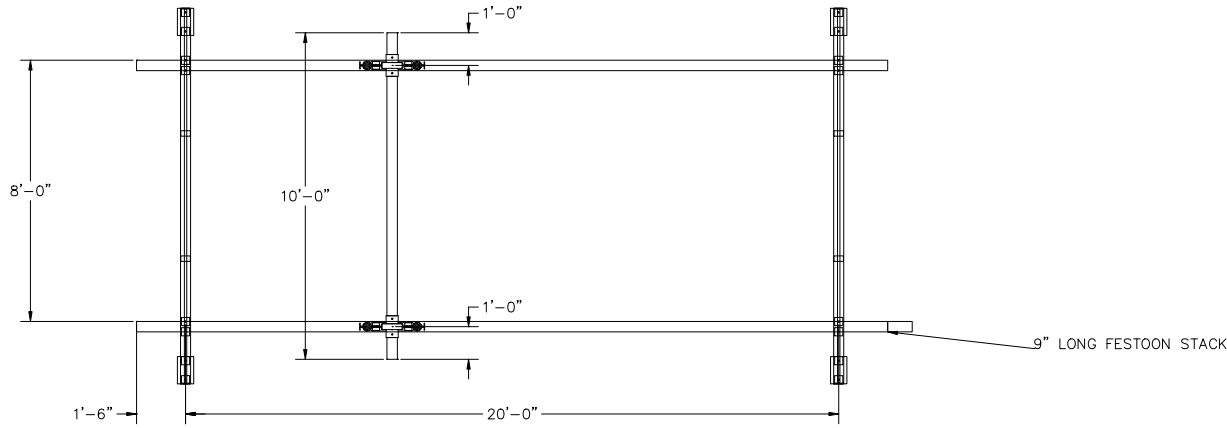
BOHL CRANE INC



HANGERS ARE ON 20' CENTERS MAXIMUM WITH A 48" CANTILEVER ON EACH END STANDARD.
HANGER POSITION TOLERANCE = +/- 2 1/2"
HANGERS MUST BE WITHIN 48" OF SPLICE JOINT
DO NOT SCALE FROM DRAWING.
DIMENSIONS ARE STEEL TO STEEL AND MAY VARY.

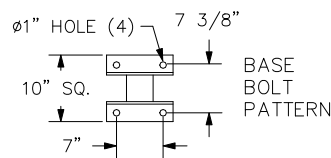
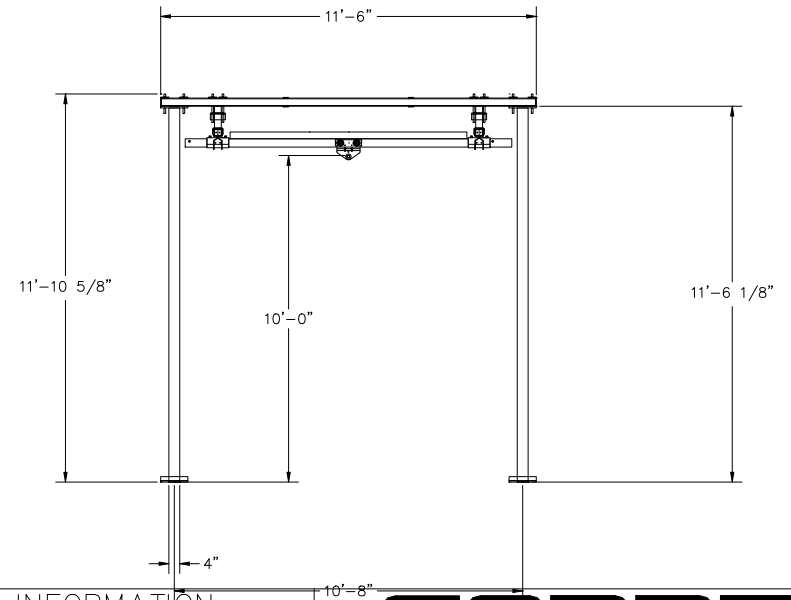
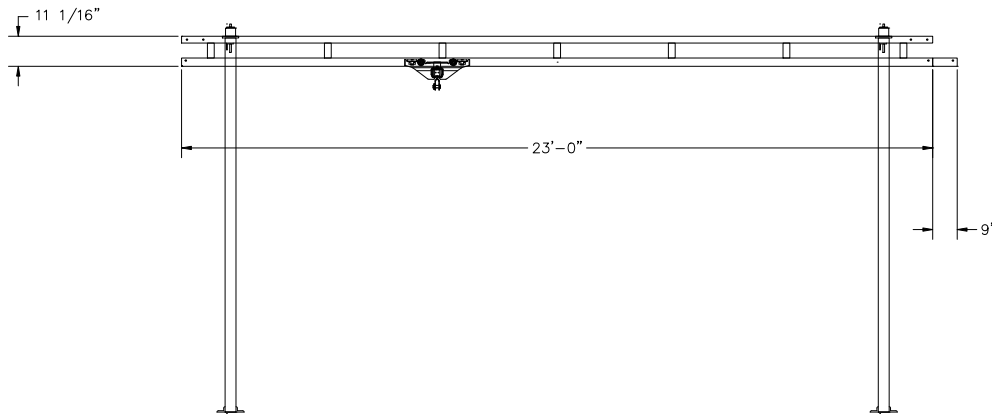
CONFIDENTIAL

SUPPORT ASSEMBLIES ARE DESIGNED TO AISC SPECIFICATIONS TO BE COMPLETELY FREESTANDING. IF NO MOVEMENT OF SUPPORT ASSEMBLIES IS REQUIRED, THEN BRACING TO BUILDING STEEL IS RECOMMENDED (NOT INCLUDED).




BRIDGE TROLLEY TRAVEL IS 8'-2 7/16"
ENDTRUCK TRAVEL IS 20'-5 5/8"

ANCHOR BOLT LOAD : 2.695 KIPS/BOLT
COLUMN AXIAL LOAD : 1.513 KIPS
OVERTURNING MOMENT : 4.435 KIPS-FT
HORIZONTAL LOAD : 498.723 LBS.

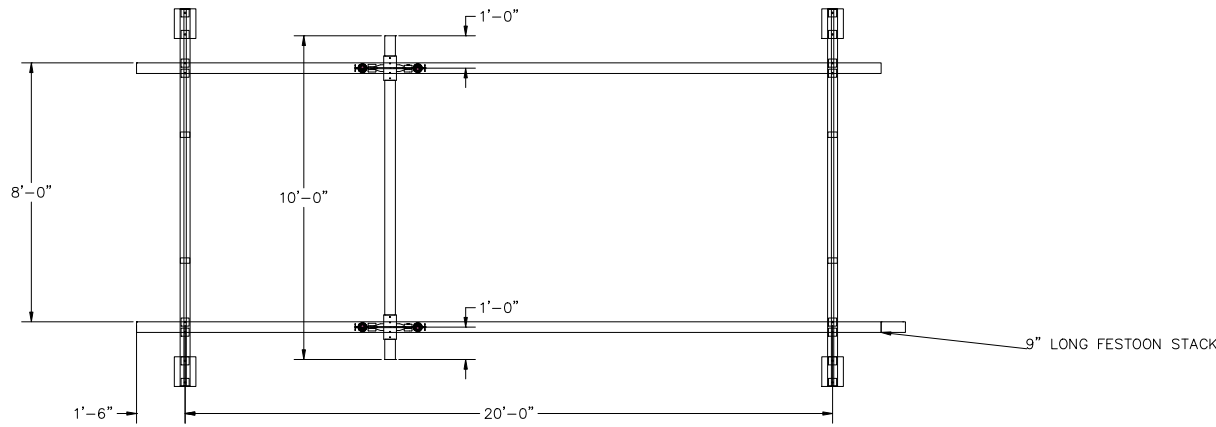


HANGERS ARE ON 20' CENTERS MAXIMUM WITH A 48" CANTILEVER ON EACH END STANDARD.
HANGER POSITION TOLERANCE = +/- 2 1/2"
HANGERS MUST BE WITHIN 48" OF SPLICE JOINT
DO NOT SCALE FROM DRAWING.
DIMENSIONS ARE STEEL TO STEEL AND MAY VARY.

CRANE INFORMATION		 600 FISHERS RUN P.O. BOX 593 FISHERS, NY 14453-0593	
CAPACITY: 1000 LBS/BR			
BRIDGE OAL: 10'		GENERAL ARRANGEMENT	
BRIDGE SERIES: 1000			
RUNWAY OAL: 23'		BY: GORBEL	
RUNWAY SERIES: 1000		DATE: JUL 21, 2023	
TOLERANCE: ±1/8		LINE #: 0	
QUANTITY: 1		P/N: ANTSMI00006.0A	
GLCS-FS-1000-10-23-10			
BOHL CRANE INC			

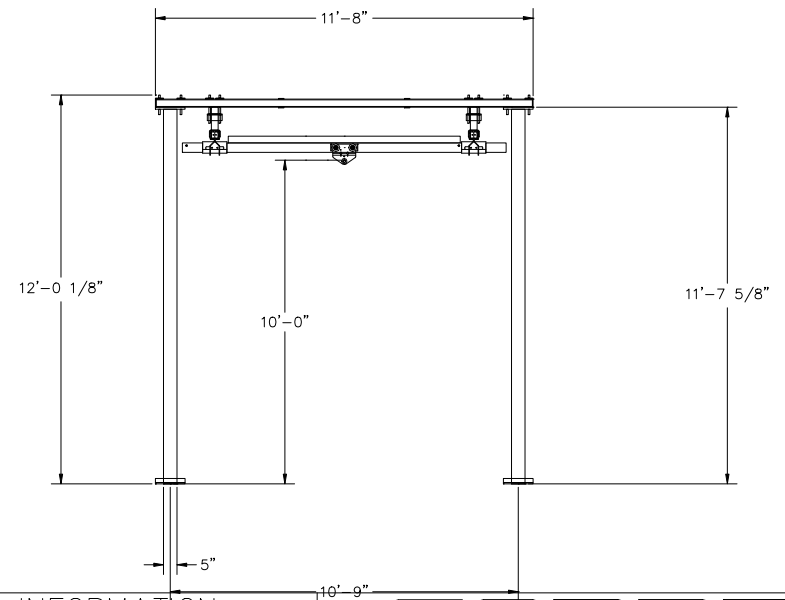
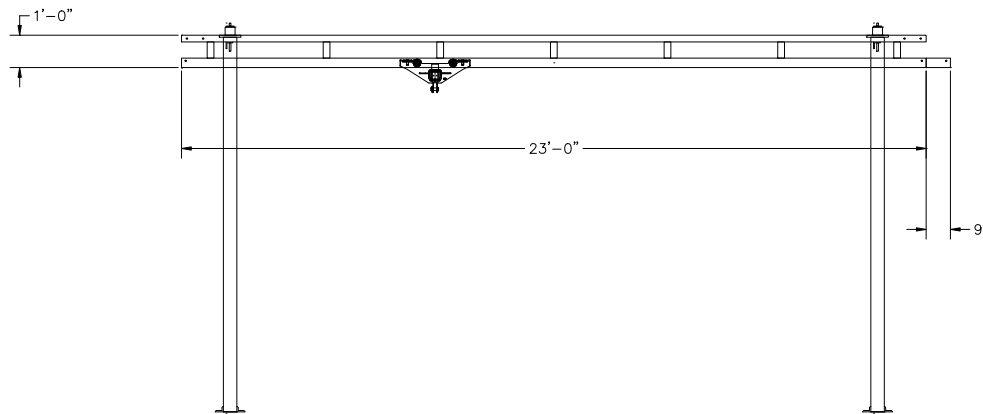
CONFIDENTIAL

SUPPORT ASSEMBLIES ARE DESIGNED TO AISC SPECIFICATIONS TO BE COMPLETELY FREESTANDING. IF NO MOVEMENT OF SUPPORT ASSEMBLIES IS REQUIRED, THEN BRACING TO BUILDING STEEL IS RECOMMENDED (NOT INCLUDED).



BRIDGE TROLLEY TRAVEL IS 7'-3 9/16"
ENDTRUCK TRAVEL IS 20'-3 1/2"

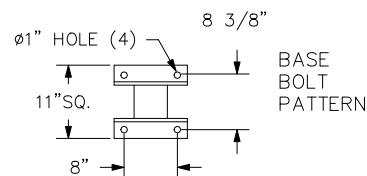
ANCHOR BOLT LOAD : 4.704 KIPS/BOLT
COLUMN AXIAL LOAD : 2.828 KIPS
OVERTURNING MOMENT : 8.613 KIPS-FT
HORIZONTAL LOAD : 966.586 LBS.



GORBEL
600 FISHERS RUN
P.O. BOX 593
FISHERS, NY 14453-0593

CRANE INFORMATION	
CAPACITY: 2000 LBS/BR	
BRIDGE OAL: 10'	
BRIDGE SERIES: 2000	
RUNWAY OAL: 23'	
RUNWAY SERIES: 2000	
TOLERANCE: ±1/8	BY: GORBEL
QUANTITY: 1	LINE #: 0
GLCS-FS-2000-10-23-10	
BOHL CRANE INC	

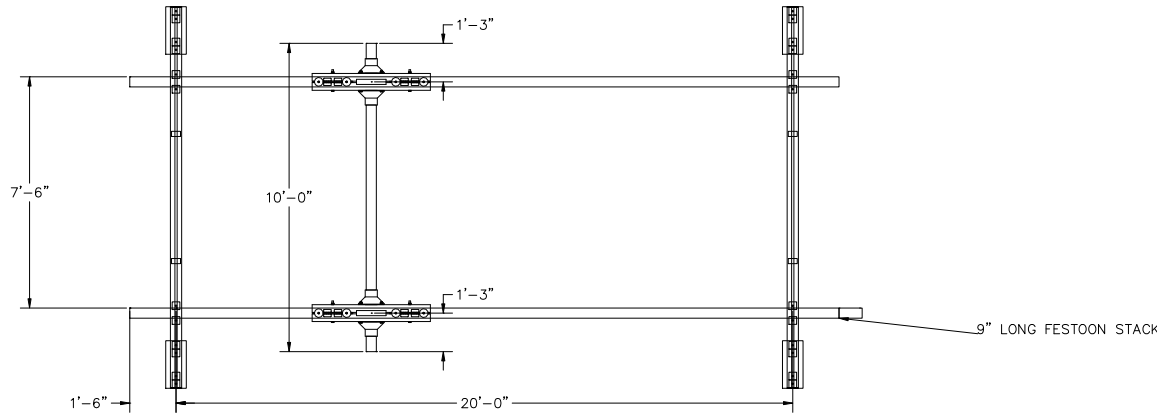
GENERAL ARRANGEMENT	
BY: GORBEL	DATE: JUL 21, 2023
LINE #: 0	P/N: ANTSMI00006.0A



HANGERS ARE ON 20' CENTERS MAXIMUM WITH A 48" CANTILEVER ON EACH END STANDARD.
HANGER POSITION TOLERANCE = +/- 2 1/2"
HANGERS MUST BE WITHIN 48" OF SPLICE JOINT
DO NOT SCALE FROM DRAWING.
DIMENSIONS ARE STEEL TO STEEL AND MAY VARY.

CONFIDENTIAL

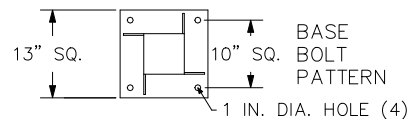
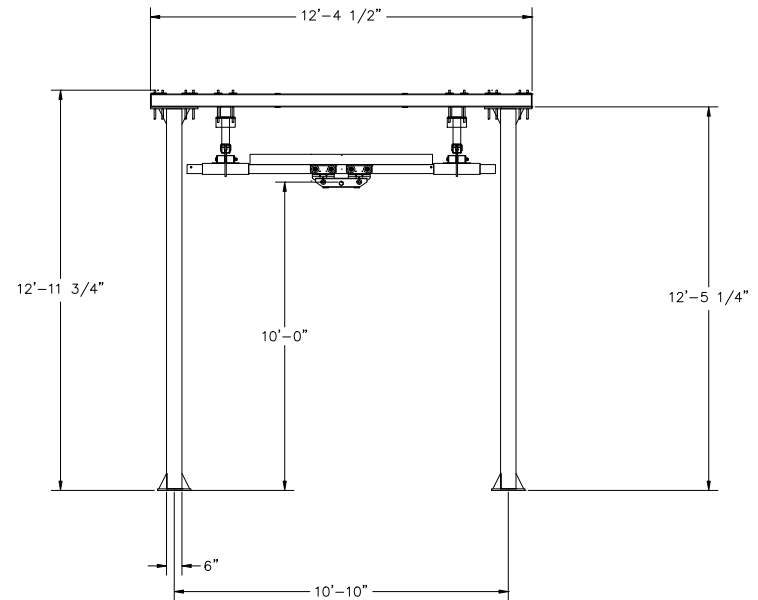
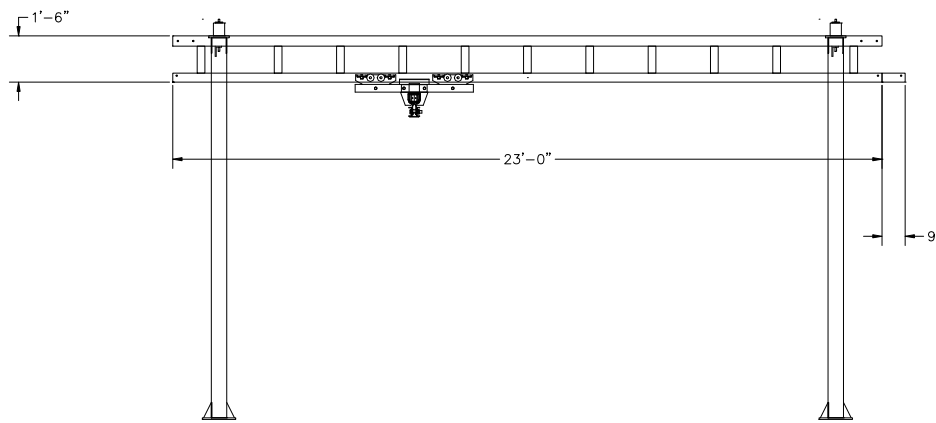
SUPPORT ASSEMBLIES ARE DESIGNED TO AISC SPECIFICATIONS TO BE COMPLETELY FREESTANDING. IF NO MOVEMENT OF SUPPORT ASSEMBLIES IS REQUIRED, THEN BRACING TO BUILDING STEEL IS RECOMMENDED (NOT INCLUDED).



BRIDGE TROLLEY TRAVEL IS 5'-6 1/16"
ENDTRUCK TRAVEL IS 18'-7 1/2"


9" LONG FESTOON STACK

ANCHOR BOLT LOAD : 5.551 KIPS/BOLT
COLUMN AXIAL LOAD : 4.987 KIPS
OVERTURNING MOMENT : 12.935 KIPS-FT
HORIZONTAL LOAD : 1611.999 LBS.



BASE
BOLT
PATTERN
1 IN. DIA. HOLE (4)

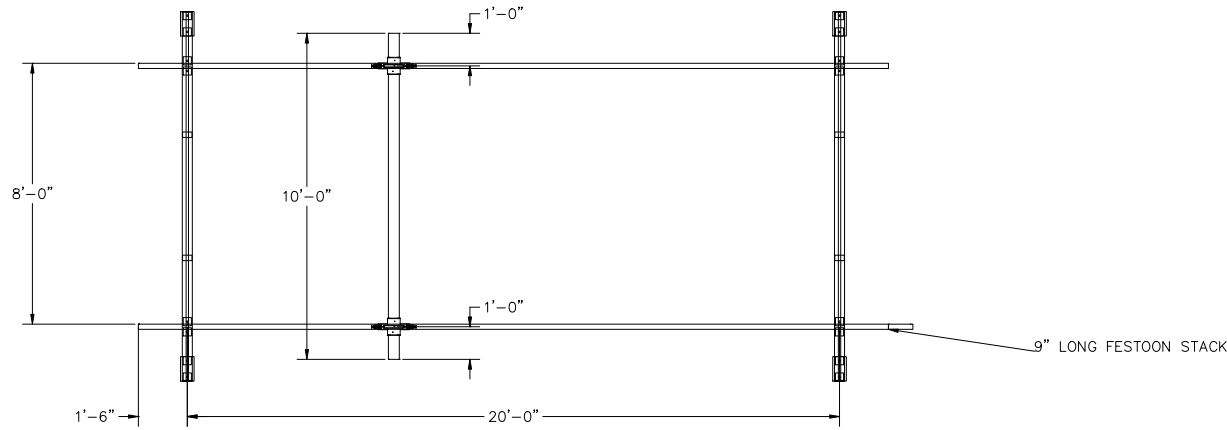
HANGERS ARE ON 20' CENTERS MAXIMUM WITH A 48" CANTILEVER ON EACH END STANDARD.
HANGER POSITION TOLERANCE = +/- 2 1/2"
HANGERS MUST BE WITHIN 48" OF SPLICE JOINT
DO NOT SCALE FROM DRAWING.
DIMENSIONS ARE STEEL TO STEEL AND MAY VARY.

CRANE INFORMATION		 600 FISHERS RUN P.O. BOX 593 FISHERS, NY 14453-0593	
CAPACITY: 4000 LBS/BR BRIDGE OAL: 10' BRIDGE SERIES: 4000 RUNWAY OAL: 23' RUNWAY SERIES: 4000			
TOLERANCE: ±1/8		BY: GORBEL	DATE: JUL 21, 2023
QUANTITY: 1		LINE #: 0	P/N: ANTSMI00006.0A
GLCS-FS-4000-10-23-10			
BOHL CRANE INC			

GENERAL ARRANGEMENT

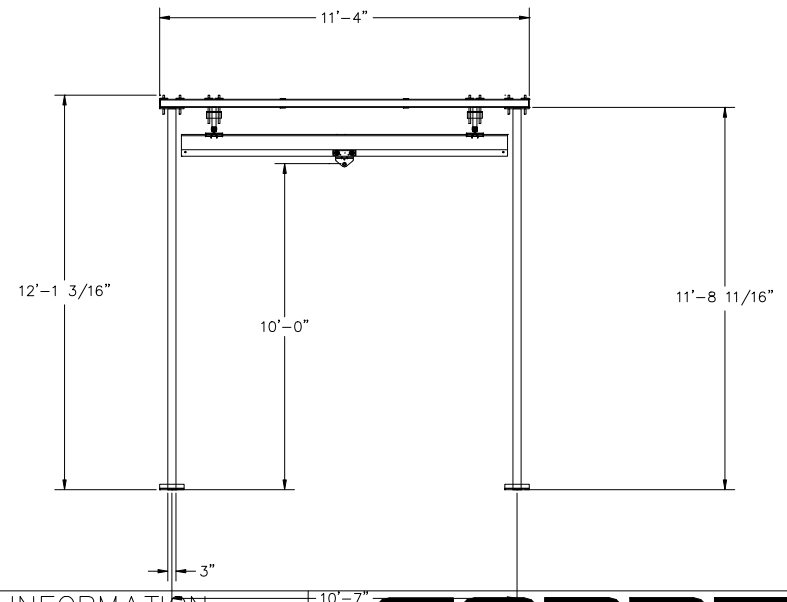
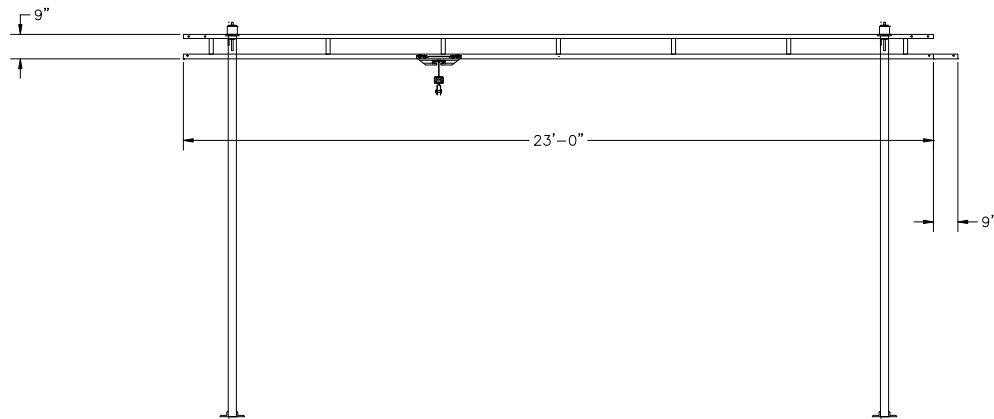
CONFIDENTIAL

SUPPORT ASSEMBLIES ARE DESIGNED TO AISC SPECIFICATIONS TO BE COMPLETELY FREESTANDING. IF NO MOVEMENT OF SUPPORT ASSEMBLIES IS REQUIRED, THEN BRACING TO BUILDING STEEL IS RECOMMENDED (NOT INCLUDED).

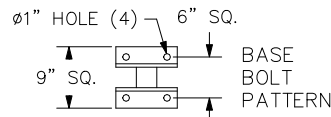



BRIDGE TROLLEY TRAVEL IS 8'-9 13/16"
ENDTRUCK TRAVEL IS 20'-10 3/8"

ANCHOR BOLT LOAD : 0.96 KIPS/BOLT
COLUMN AXIAL LOAD : 0.479 KIPS
OVERTURNING MOMENT : 1.367 KIPS-FT
HORIZONTAL LOAD : 166.807 LBS.



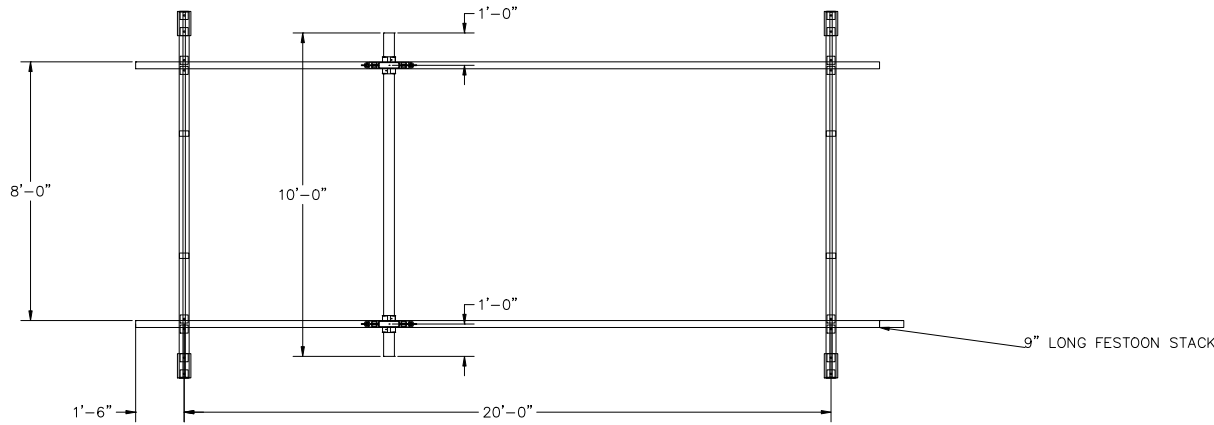
HANGERS ARE ON 20' CENTERS MAXIMUM WITH A 48" CANTILEVER ON EACH END STANDARD.
HANGER POSITION TOLERANCE = +/- 2 1/2"
HANGERS MUST BE WITHIN 48" OF SPLICE JOINT
DO NOT SCALE FROM DRAWING.
DIMENSIONS ARE STEEL TO STEEL AND MAY VARY.



CRANE INFORMATION		 600 FISHERS RUN P.O. BOX 593 FISHERS, NY 14453-0593	
CAPACITY: 250 LBS/BR			
BRIDGE OAL: 10'		GENERAL ARRANGEMENT	
BRIDGE SERIES: 250			
RUNWAY OAL: 23'		BY: GORBEL	
RUNWAY SERIES: 250		DATE: JUL 21, 2023	
TOLERANCE: ±1/8		LINE #: 0	
QUANTITY: 1		P/N: ANTSMI00006.0A	
GLCS-FS-250-10AL-23-10			
BOHL CRANE INC			

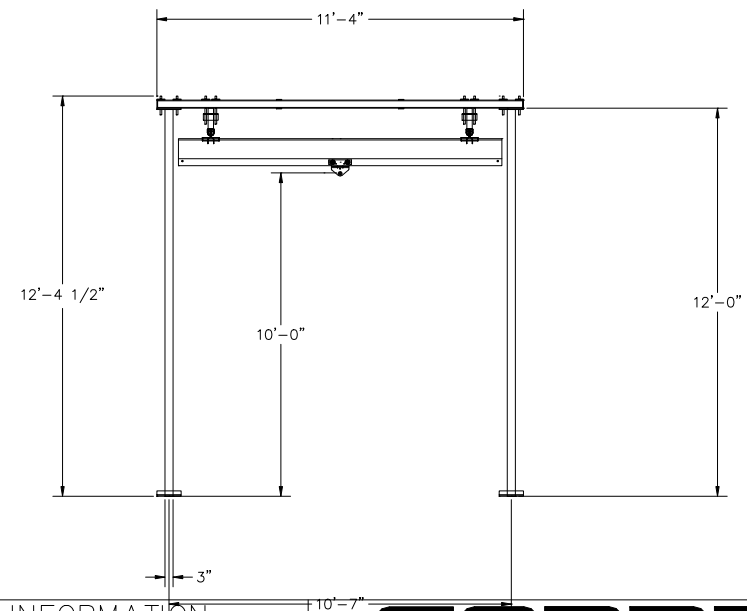
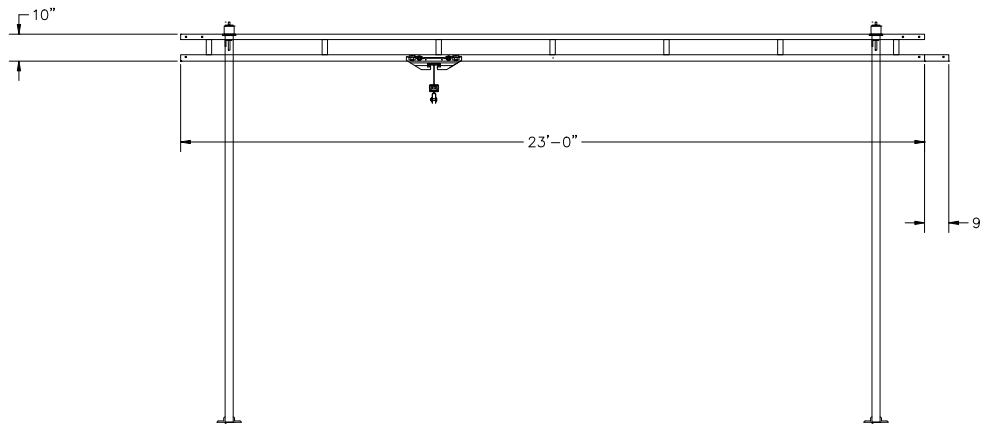
CONFIDENTIAL

SUPPORT ASSEMBLIES ARE DESIGNED TO AISC SPECIFICATIONS TO BE COMPLETELY FREESTANDING. IF NO MOVEMENT OF SUPPORT ASSEMBLIES IS REQUIRED, THEN BRACING TO BUILDING STEEL IS RECOMMENDED (NOT INCLUDED).



BRIDGE TROLLEY TRAVEL IS 8'-9 13/16"
ENDTRUCK TRAVEL IS 20'-9 7/16"

ANCHOR BOLT LOAD : 1.555 KIPS/BOLT
COLUMN AXIAL LOAD : 0.815 KIPS
OVERTURNING MOMENT : 2.215 KIPS-FT
HORIZONTAL LOAD : 212.738 LBS.

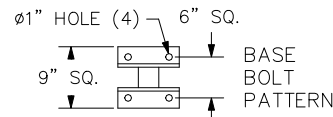


GORBEL

600 FISHERS RUN
P.O. BOX 593
FISHERS, NY 14453-0593

GENERAL ARRANGEMENT

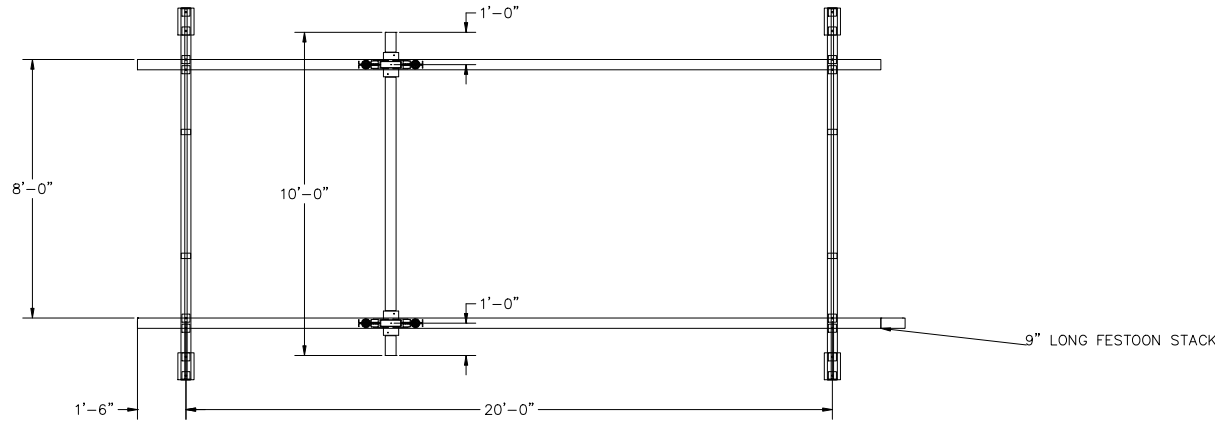
CRANE INFORMATION		BY: GORBEL		DATE: JUL 21, 2023
CAPACITY: 500 LBS/BR		LINE #: 0		P/N: ANTSMI00006.0A
BRIDGE OAL: 10'				
BRIDGE SERIES: 500				
RUNWAY OAL: 23'				
RUNWAY SERIES: 500				
TOLERANCE: ±1/8				
QUANTITY: 1				
GLCS-FS-500-10AL-23-10				
BOHL CRANE INC				



HANGERS ARE ON 20' CENTERS MAXIMUM WITH A 48" CANTILEVER ON EACH END STANDARD.
HANGER POSITION TOLERANCE = $\pm 2 \frac{1}{2}$ "
HANGERS MUST BE WITHIN 48" OF SPLICE JOINT
DO NOT SCALE FROM DRAWING.
DIMENSIONS ARE STEEL TO STEEL AND MAY VARY.

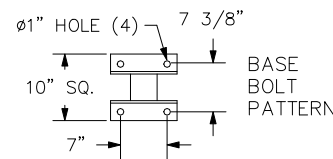
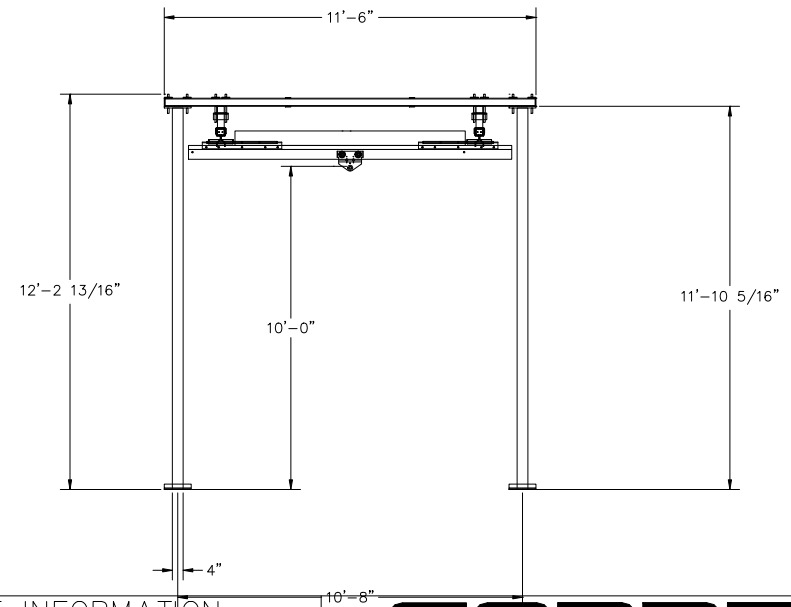
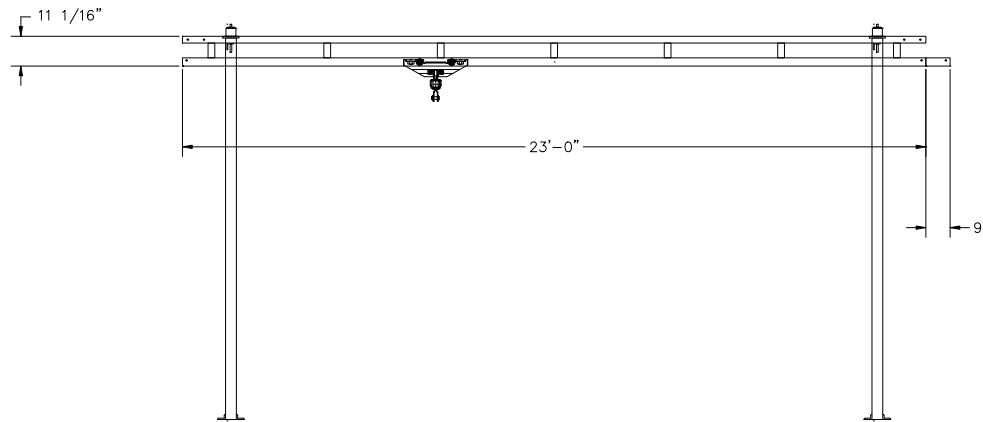
CONFIDENTIAL

SUPPORT ASSEMBLIES ARE DESIGNED TO AISC SPECIFICATIONS TO BE COMPLETELY FREESTANDING. IF NO MOVEMENT OF SUPPORT ASSEMBLIES IS REQUIRED, THEN BRACING TO BUILDING STEEL IS RECOMMENDED (NOT INCLUDED). SYSTEM IS UTILIZING NEW ALUMINUM TRACK BRIDGE(S)




BRIDGE TROLLEY TRAVEL IS 7'-3 13/16"
ENDTRUCK TRAVEL IS 20'-5 5/8"

ANCHOR BOLT LOAD : 2.689 KIPS/BOLT
COLUMN AXIAL LOAD : 1.517 KIPS
OVERTURNING MOMENT : 4.428 KIPS-FT
HORIZONTAL LOAD : 480.671 LBS.

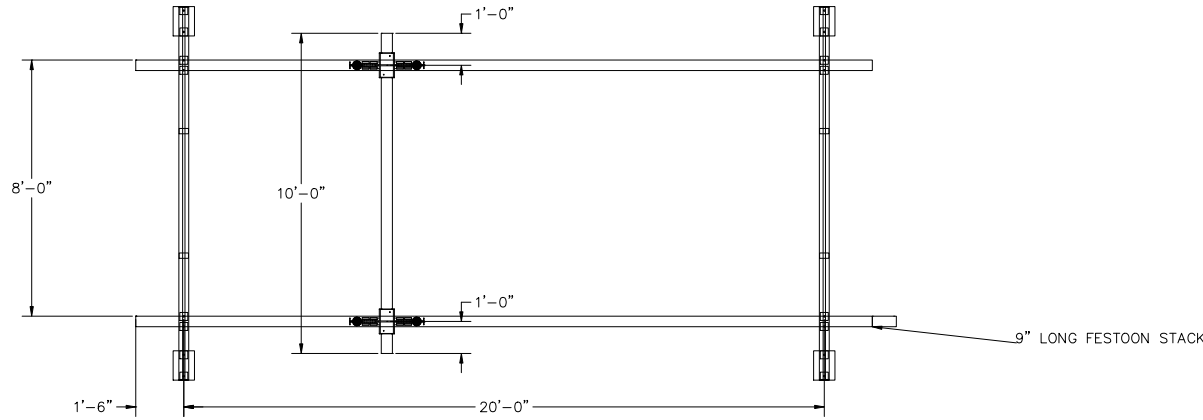


HANGERS ARE ON 20' CENTERS MAXIMUM WITH A 48" CANTILEVER ON EACH END STANDARD.
HANGER POSITION TOLERANCE = +/- 2 1/2"
HANGERS MUST BE WITHIN 48" OF SPLICE JOINT
DO NOT SCALE FROM DRAWING.
DIMENSIONS ARE STEEL TO STEEL AND MAY VARY.

CRANE INFORMATION		 600 FISHERS RUN P.O. BOX 593 FISHERS, NY 14453-0593	
CAPACITY: 1000 LBS/BR			
BRIDGE OAL: 10'		GENERAL ARRANGEMENT	
BRIDGE SERIES: 1000			
RUNWAY OAL: 23'		BY: GORBEL	
RUNWAY SERIES: 1000		DATE: JUL 21, 2023	
TOLERANCE: ±1/8		LINE #: 0	
QUANTITY: 1		P/N: ANTSMI00006.0A	
GLCS-FS-1000-10AL-23-10			
BOHL CRANE INC			

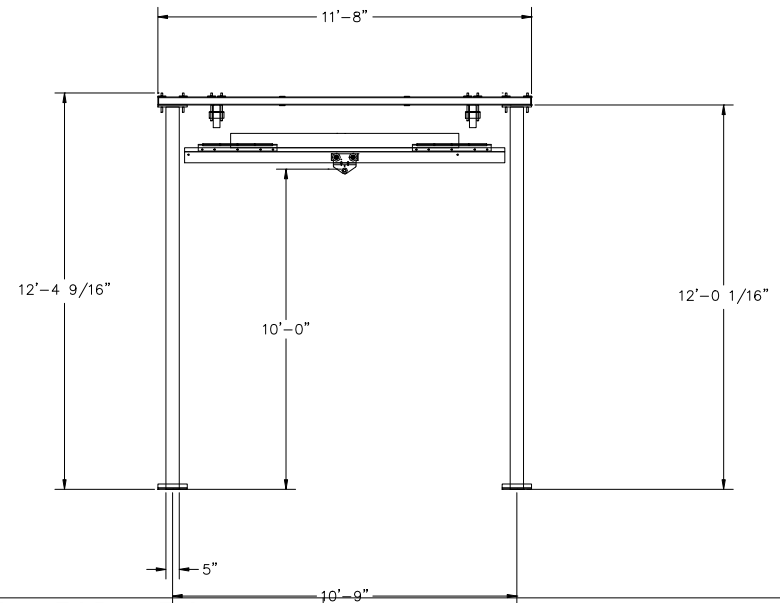
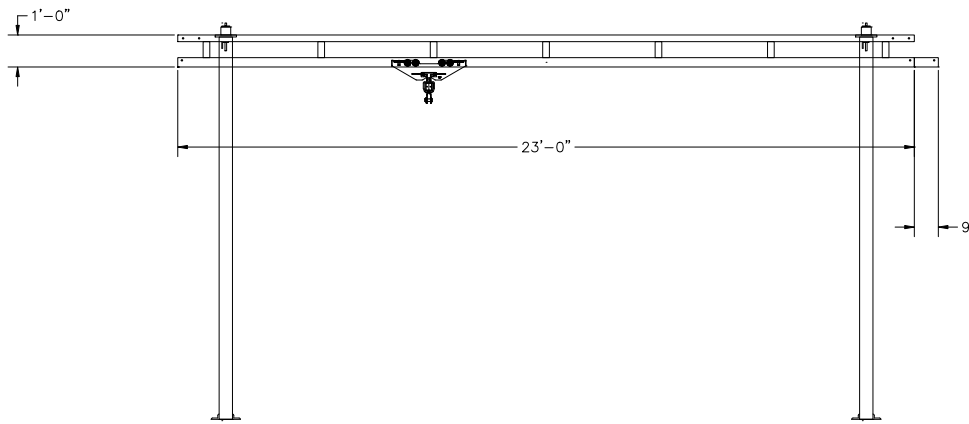
CONFIDENTIAL

SUPPORT ASSEMBLIES ARE DESIGNED TO AISC SPECIFICATIONS TO BE COMPLETELY FREESTANDING. IF NO MOVEMENT OF SUPPORT ASSEMBLIES IS REQUIRED, THEN BRACING TO BUILDING STEEL IS RECOMMENDED (NOT INCLUDED). SYSTEM IS UTILIZING NEW ALUMINUM TRACK BRIDGE(S)



BRIDGE TROLLEY TRAVEL IS 7'-3 7/16"
ENDTRUCK TRAVEL IS 20'-1 5/8"

ANCHOR BOLT LOAD : 4.476 KIPS/BOLT
COLUMN AXIAL LOAD : 2.793 KIPS
OVERTURNING MOMENT : 8.25 KIPS-FT
HORIZONTAL LOAD : 895.73 LBS.

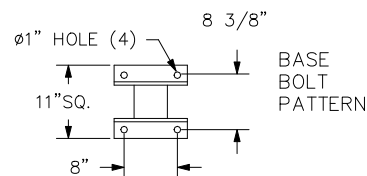


GORBEL

600 FISHERS RUN
P.O. BOX 593
FISHERS, NY 14453-0593

GENERAL ARRANGEMENT

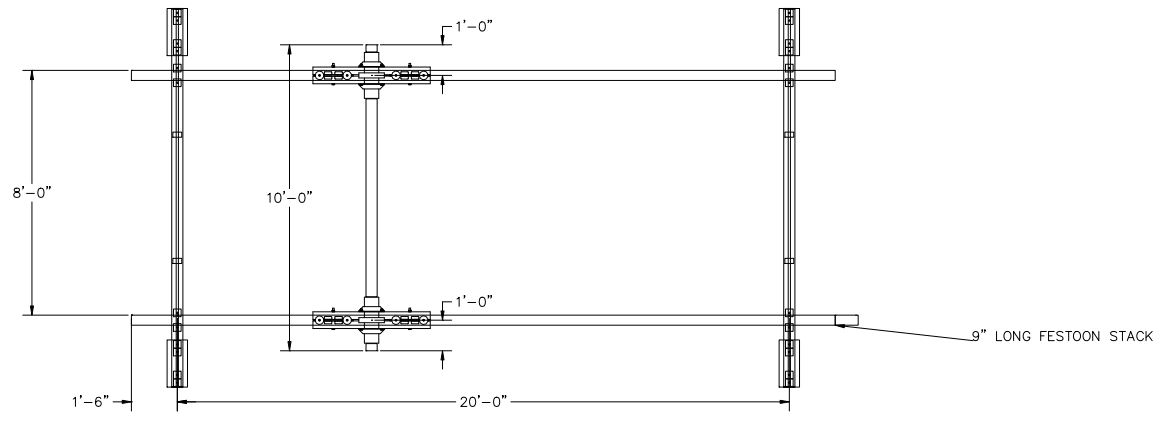
CRANE INFORMATION		BY: GORBEL		DATE: JUL 21, 2023
CAPACITY: 2000 LBS/BR		LINE #: 0		P/N: ANTSMI00006.0A
BRIDGE OAL: 10'		GLCS-FS-2000-10AL-23-10		
BRIDGE SERIES: 2000		BOHL CRANE INC		
RUNWAY OAL: 23'				
RUNWAY SERIES: 2000				
TOLERANCE: ±1/8				
QUANTITY: 1				



HANGERS ARE ON 20' CENTERS MAXIMUM WITH A 48" CANTILEVER ON EACH END STANDARD.
HANGER POSITION TOLERANCE = +/- 2 1/2"
HANGERS MUST BE WITHIN 48" OF SPLICE JOINT
DO NOT SCALE FROM DRAWING.
DIMENSIONS ARE STEEL TO STEEL AND MAY VARY.

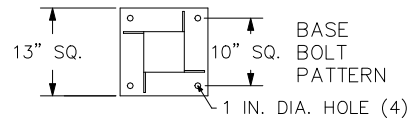
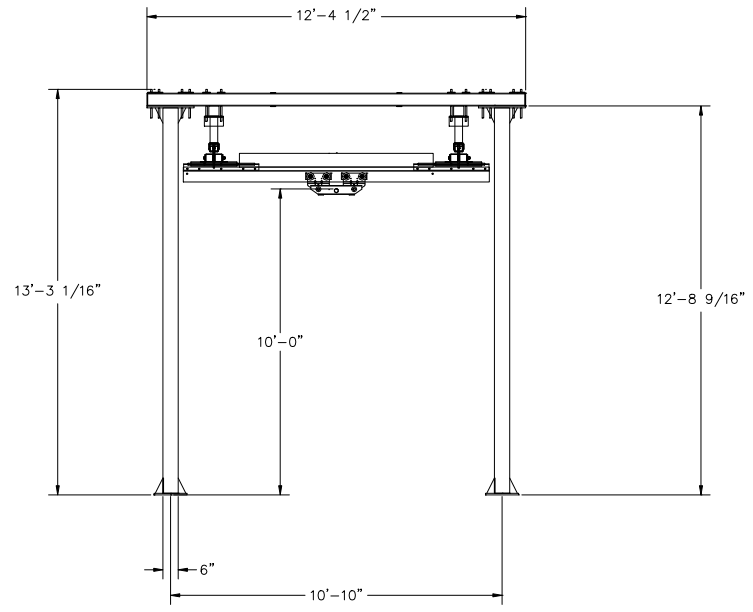
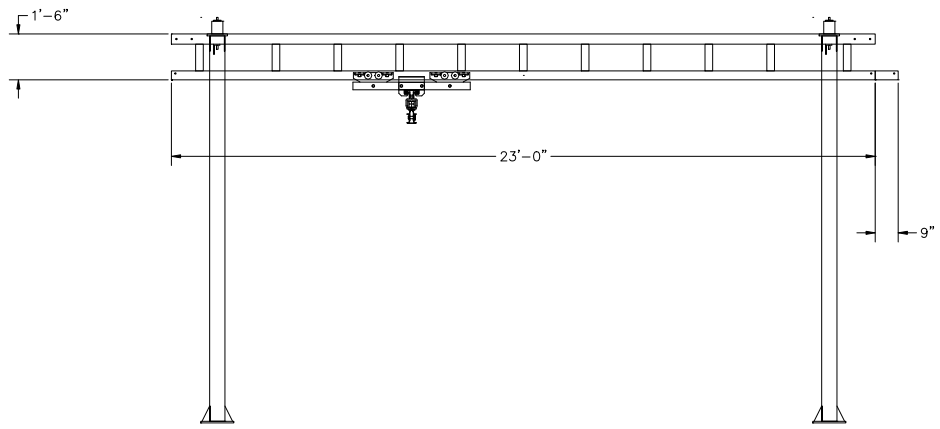
CONFIDENTIAL

SUPPORT ASSEMBLIES ARE DESIGNED TO AISC SPECIFICATIONS TO BE COMPLETELY FREESTANDING. IF NO MOVEMENT OF SUPPORT ASSEMBLIES IS REQUIRED, THEN BRACING TO BUILDING STEEL IS RECOMMENDED (NOT INCLUDED). SYSTEM IS UTILIZING NEW ALUMINUM TRACK BRIDGE(S)



BRIDGE TROLLEY TRAVEL IS 5'-8 15/16"
ENDTRUCK TRAVEL IS 18'-7 1/2"

ANCHOR BOLT LOAD : 5.529 KIPS/BOLT
COLUMN AXIAL LOAD : 5.069 KIPS
OVERTURNING MOMENT : 12.935 KIPS-FT
HORIZONTAL LOAD : 1536.775 LBS.



BASE
BOLT
PATTERN
1 IN. DIA. HOLE (4)

HANGERS ARE ON 20' CENTERS MAXIMUM WITH A 48" CANTILEVER ON EACH END STANDARD.
HANGER POSITION TOLERANCE = +/- 2 1/2"
HANGERS MUST BE WITHIN 48" OF SPLICE JOINT
DO NOT SCALE FROM DRAWING.
DIMENSIONS ARE STEEL TO STEEL AND MAY VARY.

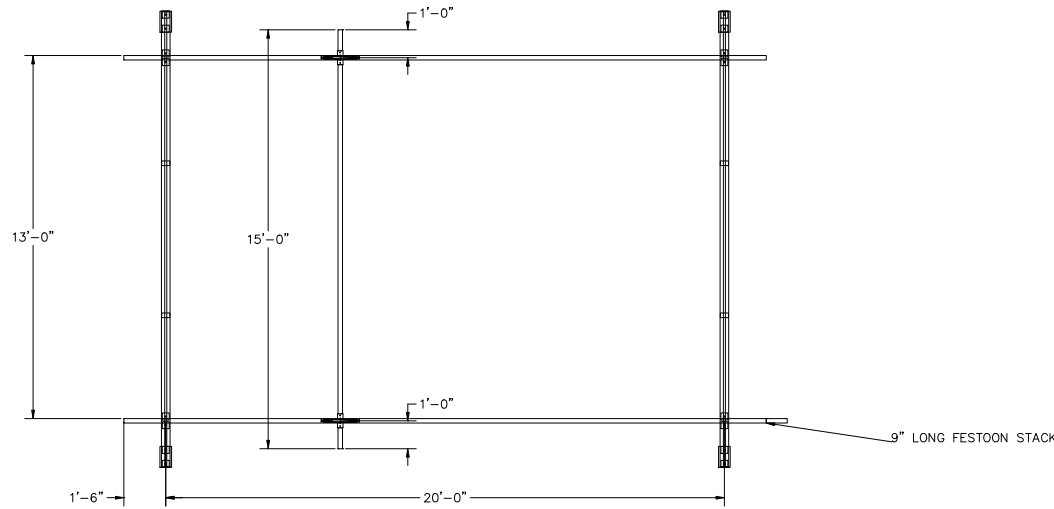
CRANE INFORMATION	
CAPACITY: 4000 LBS/BR	
BRIDGE OAL: 10'	
BRIDGE SERIES: 4000	
RUNWAY OAL: 23'	
RUNWAY SERIES: 4000	
TOLERANCE: ±1/8	
QUANTITY: 1	
GLCS-FS-4000-10AL-23-10	
BOHL CRANE INC	

GORBEL
600 FISHERS RUN
P.O. BOX 593
FISHERS, NY 14453-0593

GENERAL ARRANGEMENT	
BY: GORBEL	DATE: JUL 21, 2023
LINE #: 0	P/N: ANTSMI00006.0A

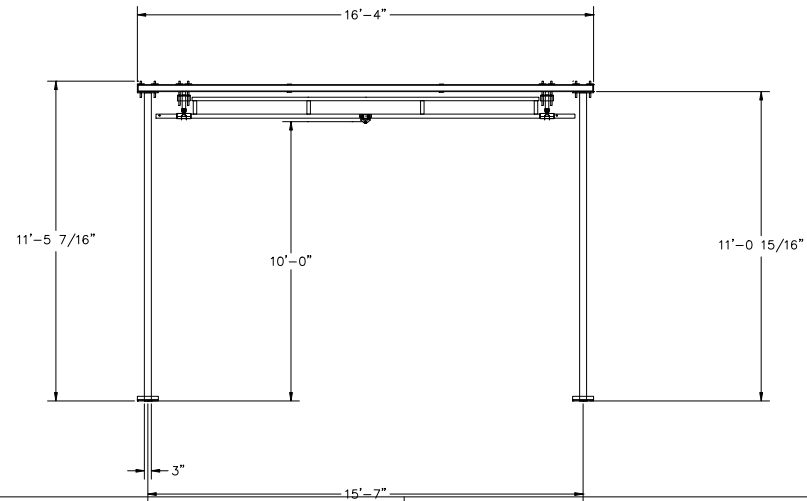
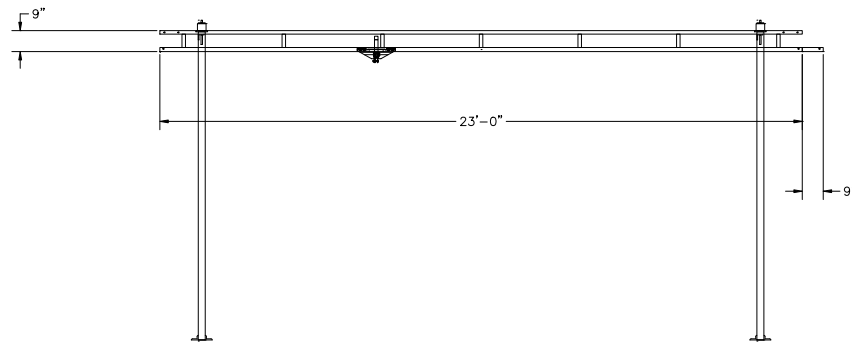
CONFIDENTIAL

SUPPORT ASSEMBLIES ARE DESIGNED TO AISC SPECIFICATIONS TO BE COMPLETELY FREESTANDING. IF NO MOVEMENT OF SUPPORT ASSEMBLIES IS REQUIRED, THEN BRACING TO BUILDING STEEL IS RECOMMENDED (NOT INCLUDED).

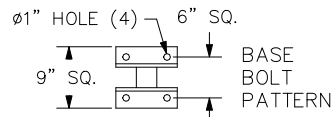



BRIDGE TROLLEY TRAVEL IS 13'-8 1/8"
ENDTRUCK TRAVEL IS 21'-2 1/2"

ANCHOR BOLT LOAD : 1.088 KIPS/BOLT
COLUMN AXIAL LOAD : 0.53 KIPS
OVERTURNING MOMENT : 1.542 KIPS-FT
HORIZONTAL LOAD : 204.715 LBS.



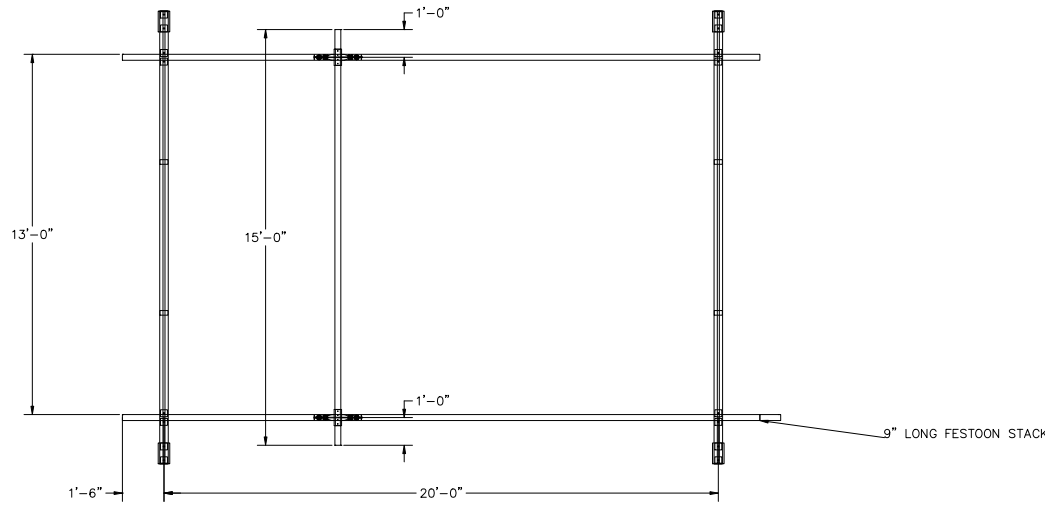
HANGERS ARE ON 20' CENTERS MAXIMUM WITH A 48" CANTILEVER ON EACH END STANDARD.
HANGER POSITION TOLERANCE = +/- 2 1/2"
HANGERS MUST BE WITHIN 48" OF SPLICE JOINT
DO NOT SCALE FROM DRAWING.
DIMENSIONS ARE STEEL TO STEEL AND MAY VARY.



CRANE INFORMATION		 600 FISHERS RUN P.O. BOX 593 FISHERS, NY 14453-0593	
CAPACITY: 250 LBS/BR BRIDGE OAL: 15' BRIDGE SERIES: 250 RUNWAY OAL: 23' RUNWAY SERIES: 250			
TOLERANCE: ±1/8		BY: GORBEL	DATE: JUL 21, 2023
QUANTITY: 1		LINE #: 0	P/N: ANTSMI00006.0A
GLCS-FS-250-15-23-10			
BOHL CRANE INC			

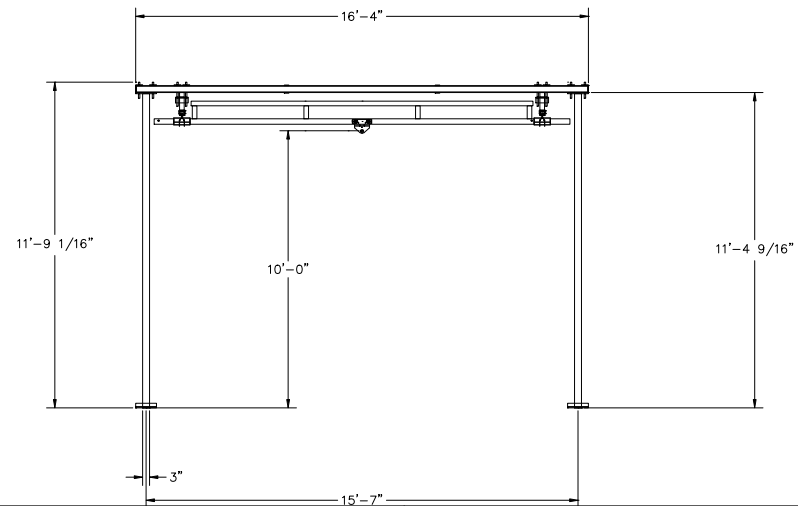
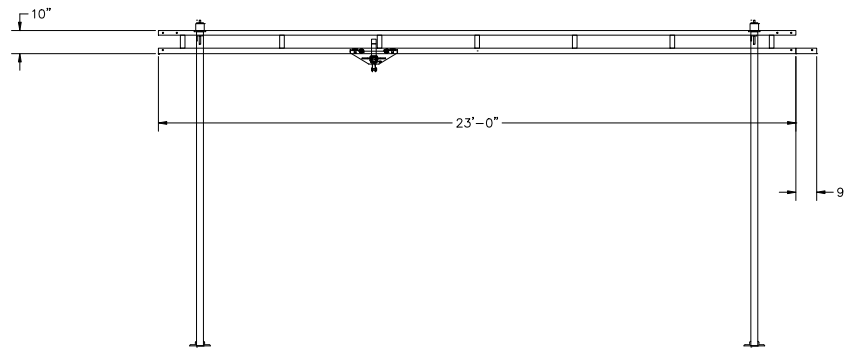
CONFIDENTIAL

SUPPORT ASSEMBLIES ARE DESIGNED TO AISC SPECIFICATIONS TO BE COMPLETELY FREESTANDING. IF NO MOVEMENT OF SUPPORT ASSEMBLIES IS REQUIRED, THEN BRACING TO BUILDING STEEL IS RECOMMENDED (NOT INCLUDED).

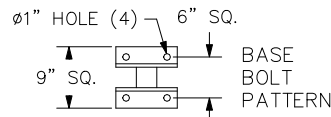



BRIDGE TROLLEY TRAVEL IS 12'-7"
ENDTRUCK TRAVEL IS 20'-9 7/16"

ANCHOR BOLT LOAD : 1.772 KIPS/BOLT
COLUMN AXIAL LOAD : 0.9 KIPS
OVERTURNING MOMENT : 2.508 KIPS-FT
HORIZONTAL LOAD : 264.372 LBS.



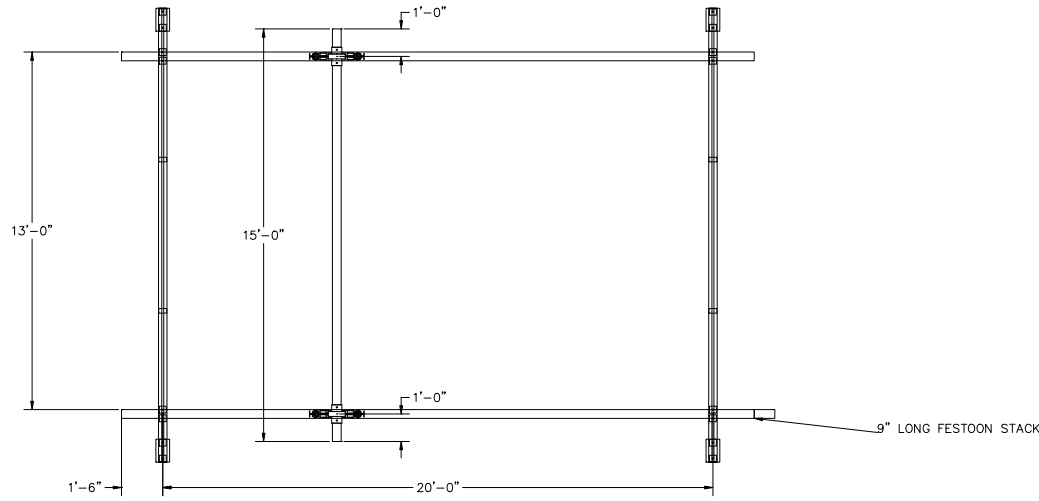
HANGERS ARE ON 20' CENTERS MAXIMUM WITH A 48" CANTILEVER ON EACH END STANDARD.
HANGER POSITION TOLERANCE = $\pm 2 \frac{1}{2}$ "
HANGERS MUST BE WITHIN 48" OF SPLICE JOINT
DO NOT SCALE FROM DRAWING.
DIMENSIONS ARE STEEL TO STEEL AND MAY VARY.



CRANE INFORMATION		 600 FISHERS RUN P.O. BOX 593 FISHERS, NY 14453-0593	
CAPACITY: 500 LBS/BR			
BRIDGE OAL: 15'		GENERAL ARRANGEMENT	
BRIDGE SERIES: 500			
RUNWAY OAL: 23'		BY: GORBEL	
RUNWAY SERIES: 500		DATE: JUL 21, 2023	
TOLERANCE: $\pm 1/8$		LINE #: 0	
QUANTITY: 1		P/N: ANTSMI00006.0A	
GLCS-FS-500-15-23-10			
BOHL CRANE INC			

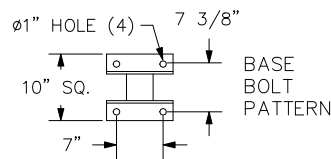
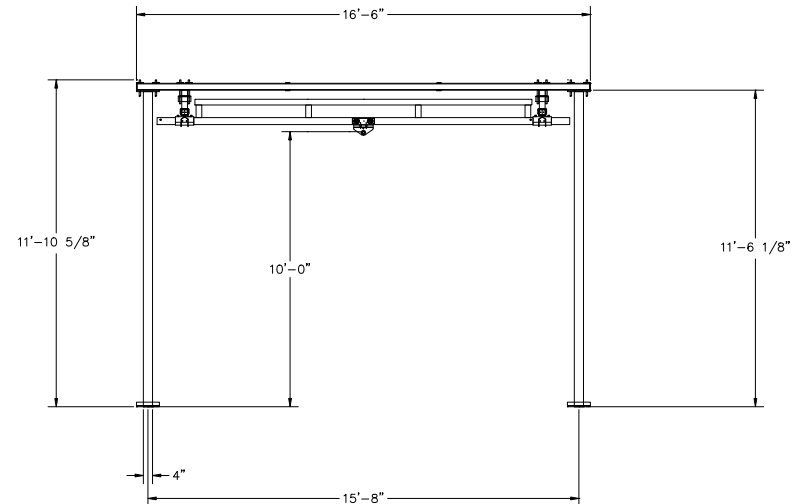
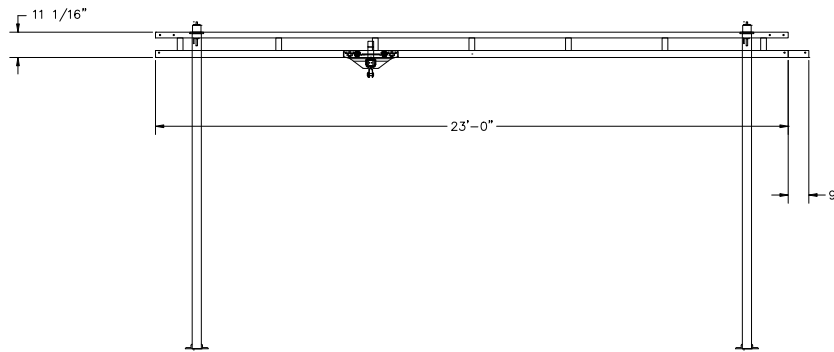
CONFIDENTIAL

SUPPORT ASSEMBLIES ARE DESIGNED TO AISC SPECIFICATIONS TO BE COMPLETELY FREESTANDING. IF NO MOVEMENT OF SUPPORT ASSEMBLIES IS REQUIRED, THEN BRACING TO BUILDING STEEL IS RECOMMENDED (NOT INCLUDED).



BRIDGE TROLLEY TRAVEL IS 12'-4 7/16"
ENDTRUCK TRAVEL IS 20'-5 5/8"

ANCHOR BOLT LOAD : 2.995 KIPS/BOLT
COLUMN AXIAL LOAD : 1.649 KIPS
OVERTURNING MOMENT : 4.904 KIPS-FT
HORIZONTAL LOAD : 559.11 LBS.



HANGERS ARE ON 20' CENTERS MAXIMUM WITH A 48" CANTILEVER ON EACH END STANDARD.
HANGER POSITION TOLERANCE = +/- 2 1/2"
HANGERS MUST BE WITHIN 48" OF SPLICE JOINT
DO NOT SCALE FROM DRAWING.
DIMENSIONS ARE STEEL TO STEEL AND MAY VARY.

CRANE INFORMATION

CAPACITY: 1000 LBS/BR
BRIDGE OAL: 15'
BRIDGE SERIES: 1000
RUNWAY OAL: 23'
RUNWAY SERIES: 1000

GORBEL

600 FISHERS RUN
P.O. BOX 593
FISHERS, NY 14453-0593

GENERAL ARRANGEMENT

TOLERANCE: ±1/8

BY: GORBEL

DATE: JUL 21, 2023

QUANTITY: 1

LINE #: 0

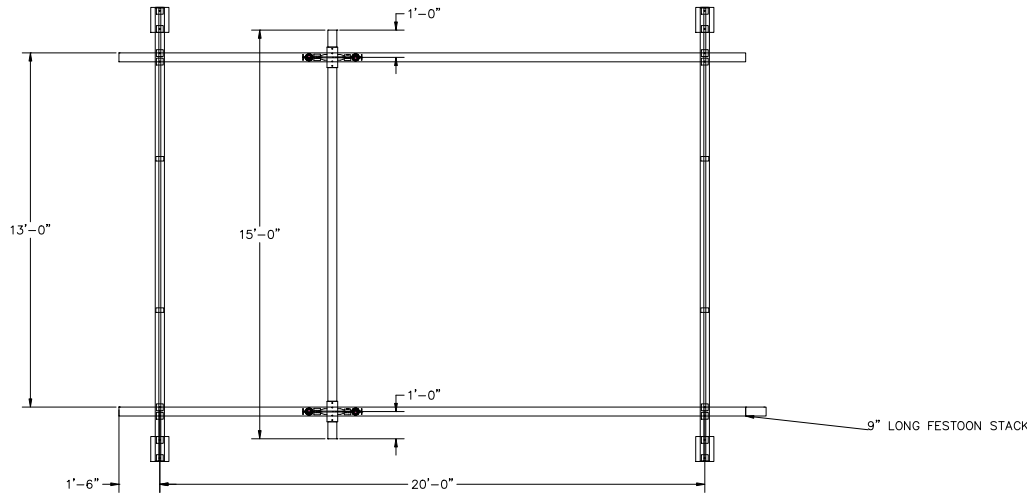
P/N: ANTSMI00006.0A

GLCS-FS-1000-15-23-10

BOHL CRANE INC

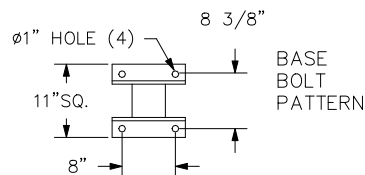
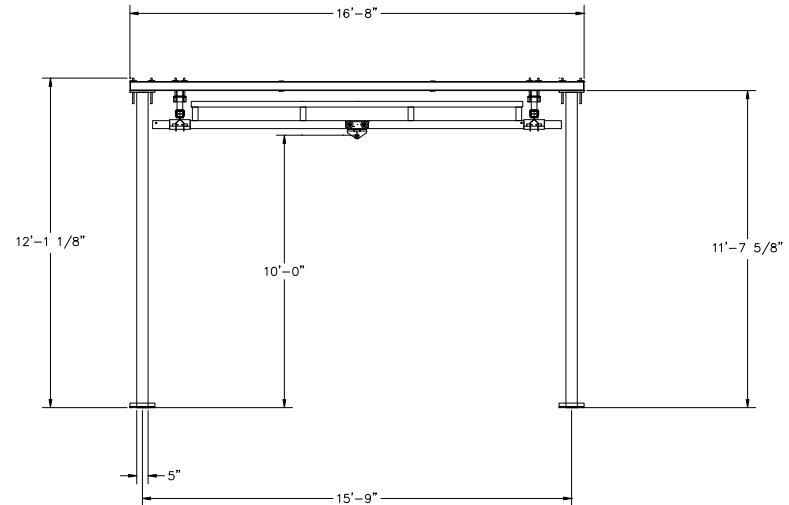
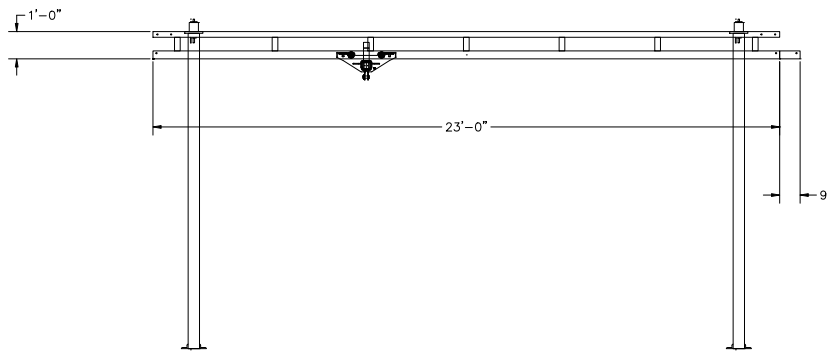
CONFIDENTIAL

SUPPORT ASSEMBLIES ARE DESIGNED TO AISC SPECIFICATIONS TO BE COMPLETELY FREESTANDING. IF NO MOVEMENT OF SUPPORT ASSEMBLIES IS REQUIRED, THEN BRACING TO BUILDING STEEL IS RECOMMENDED (NOT INCLUDED).




BRIDGE TROLLEY TRAVEL IS 12'-3 9/16"
ENDTRUCK TRAVEL IS 20'-3 1/2"

ANCHOR BOLT LOAD : 5.054 KIPS/BOLT
COLUMN AXIAL LOAD : 3.003 KIPS
OVERTURNING MOMENT : 9.217 KIPS-FT
HORIZONTAL LOAD : 1030.61 LBS.



HANGERS ARE ON 20' CENTERS MAXIMUM WITH A 48" CANTILEVER ON EACH END STANDARD.
HANGER POSITION TOLERANCE = +/- 2 1/2"
HANGERS MUST BE WITHIN 48" OF SPLICE JOINT
DO NOT SCALE FROM DRAWING.
DIMENSIONS ARE STEEL TO STEEL AND MAY VARY.

CRANE INFORMATION		 600 FISHERS RUN P.O. BOX 593 FISHERS, NY 14453-0593	
CAPACITY: 2000 LBS/BR BRIDGE OAL: 15' BRIDGE SERIES: 2000 RUNWAY OAL: 23' RUNWAY SERIES: 2000			
TOLERANCE: ±1/8		BY: GORBEL	DATE: JUL 21, 2023
QUANTITY: 1		LINE #: 0	P/N: ANTSMI00006.0A
GLCS-FS-2000-15-23-10			
BOHL CRANE INC			

GORBEL

600 FISHERS RUN
P.O. BOX 593
FISHERS, NY 14453-0593

GENERAL ARRANGEMENT

BY: GORBEL DATE: JUL 21, 2023

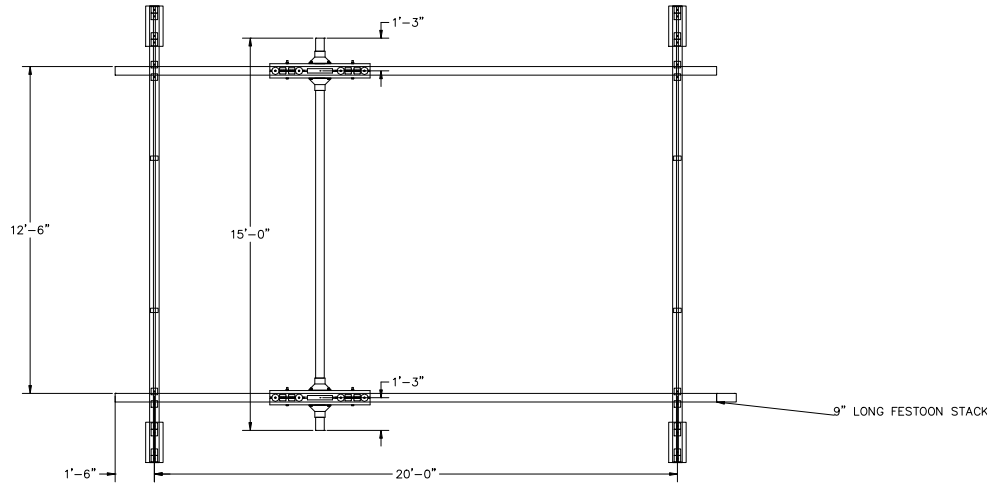
LINE #: 0 P/N: ANTSMI00006.0A

GLCS-FS-2000-15-23-10

BOHL CRANE INC

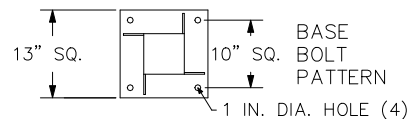
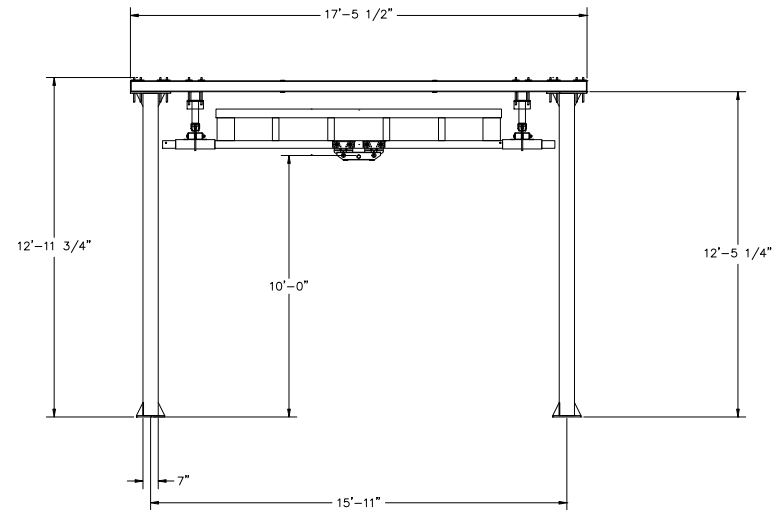
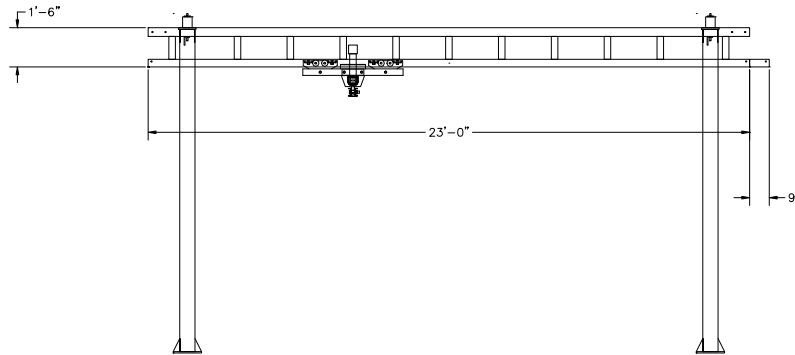
CONFIDENTIAL

SUPPORT ASSEMBLIES ARE DESIGNED TO AISC SPECIFICATIONS TO BE COMPLETELY FREESTANDING. IF NO MOVEMENT OF SUPPORT ASSEMBLIES IS REQUIRED, THEN BRACING TO BUILDING STEEL IS RECOMMENDED (NOT INCLUDED).




BRIDGE TROLLEY TRAVEL IS 10'-6 1/16"
ENDTRUCK TRAVEL IS 18'-7 1/2"

ANCHOR BOLT LOAD : 6.791 KIPS/BOLT
COLUMN AXIAL LOAD : 5.409 KIPS
OVERTURNING MOMENT : 15.38 KIPS-FT
HORIZONTAL LOAD : 2156.246 LBS.



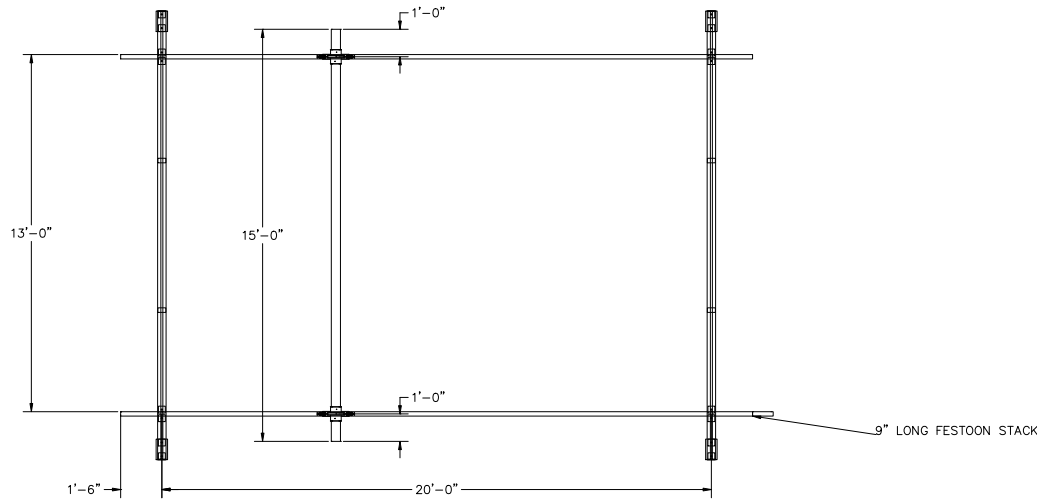
BASE
BOLT
PATTERN

HANGERS ARE ON 20' CENTERS MAXIMUM WITH A 48" CANTILEVER ON EACH END STANDARD.
HANGER POSITION TOLERANCE = +/- 2 1/2"
HANGERS MUST BE WITHIN 48" OF SPLICE JOINT
DO NOT SCALE FROM DRAWING.
DIMENSIONS ARE STEEL TO STEEL AND MAY VARY.

CRANE INFORMATION		 600 FISHERS RUN P.O. BOX 593 FISHERS, NY 14453-0593	
CAPACITY: 4000 LBS/BR			
BRIDGE OAL: 15'			
BRIDGE SERIES: 4000		BY: GORBEL	
RUNWAY OAL: 23'		DATE: JUL 21, 2023	
RUNWAY SERIES: 4000		LINE #: 0	
TOLERANCE: ±1/8		P/N: ANTSMI00006.0A	
QUANTITY: 1			
GLCS-FS-4000-15-23-10			
BOHL CRANE INC			

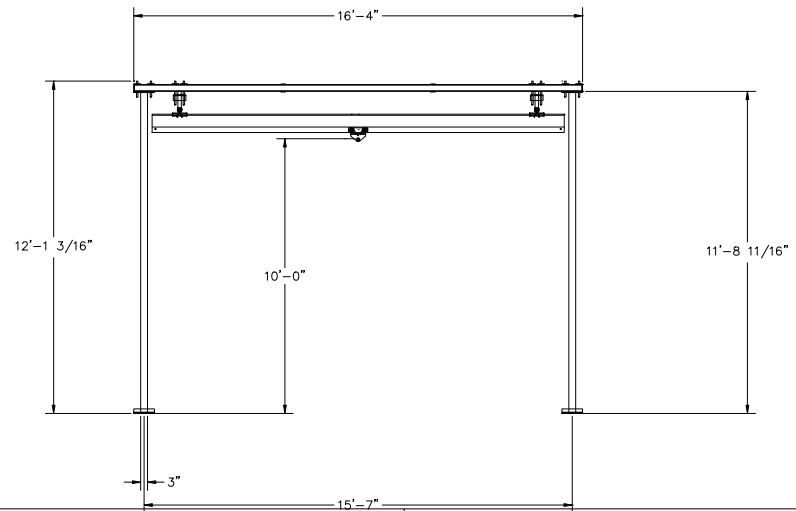
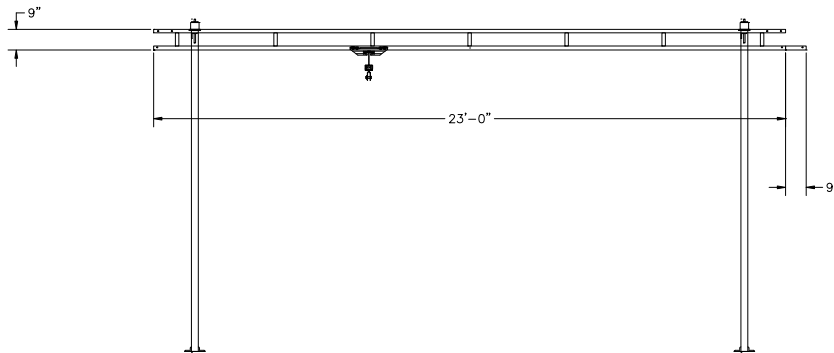
CONFIDENTIAL

SUPPORT ASSEMBLIES ARE DESIGNED TO AISC SPECIFICATIONS TO BE COMPLETELY FREESTANDING. IF NO MOVEMENT OF SUPPORT ASSEMBLIES IS REQUIRED, THEN BRACING TO BUILDING STEEL IS RECOMMENDED (NOT INCLUDED).

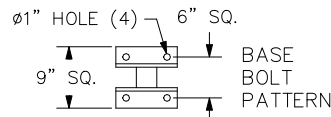


BRIDGE TROLLEY TRAVEL IS 13'-9 13/16"
ENDTRUCK TRAVEL IS 20'-10 3/8"

ANCHOR BOLT LOAD : 1.036 KIPS/BOLT
COLUMN AXIAL LOAD : 0.524 KIPS
OVERTURNING MOMENT : 1.476 KIPS-FT
HORIZONTAL LOAD : 179.753 LBS.



HANGERS ARE ON 20' CENTERS MAXIMUM WITH A 48" CANTILEVER ON EACH END STANDARD.
HANGER POSITION TOLERANCE = +/- 2 1/2"
HANGERS MUST BE WITHIN 48" OF SPLICE JOINT
DO NOT SCALE FROM DRAWING.
DIMENSIONS ARE STEEL TO STEEL AND MAY VARY.

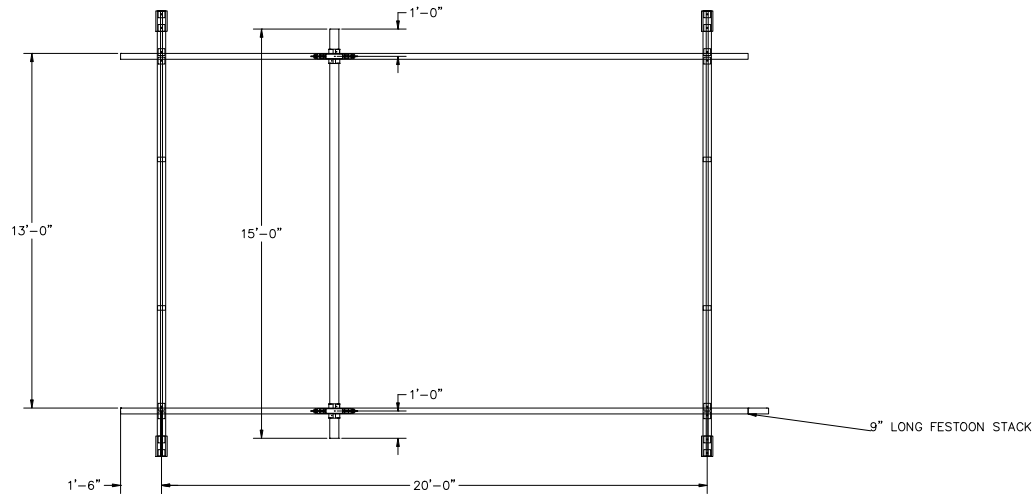


CRANE INFORMATION		GORBEL 600 FISHERS RUN P.O. BOX 593 FISHERS, NY 14453-0593	
CAPACITY: 250 LBS/BR BRIDGE OAL: 15' BRIDGE SERIES: 250 RUNWAY OAL: 23' RUNWAY SERIES: 250			
TOLERANCE: ±1/8		BY: GORBEL	DATE: JUL 21, 2023
QUANTITY: 1		LINE #: 0	P/N: ANTSMI00006.0A
GLCS-FS-250-15AL-23-10			
BOHL CRANE INC			

GENERAL ARRANGEMENT

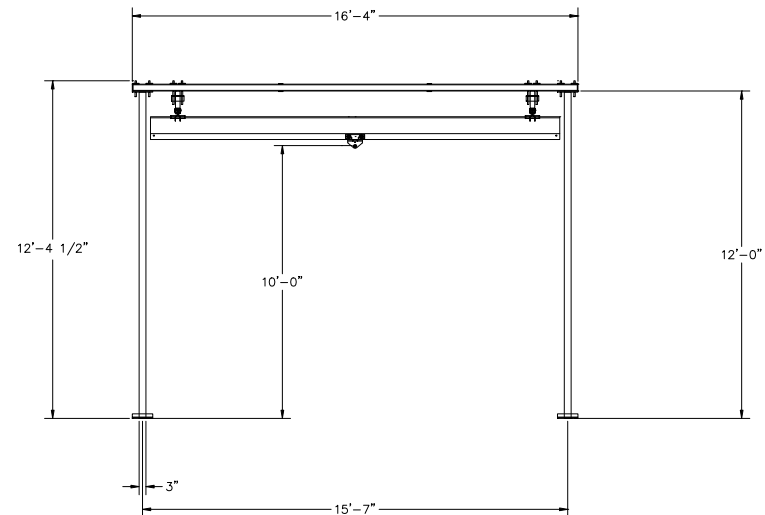
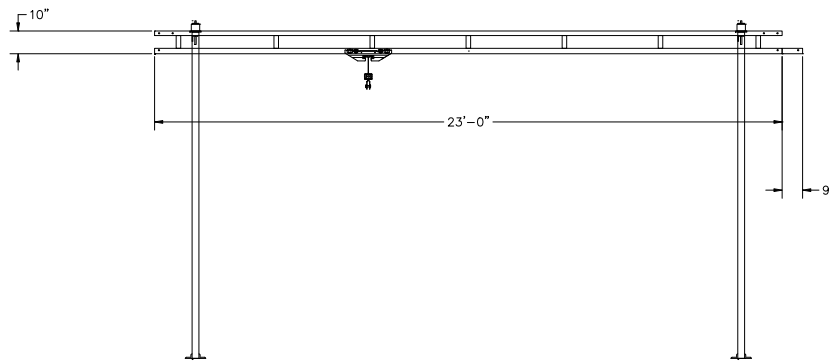
CONFIDENTIAL

SUPPORT ASSEMBLIES ARE DESIGNED TO AISC SPECIFICATIONS TO BE COMPLETELY FREESTANDING. IF NO MOVEMENT OF SUPPORT ASSEMBLIES IS REQUIRED, THEN BRACING TO BUILDING STEEL IS RECOMMENDED (NOT INCLUDED).

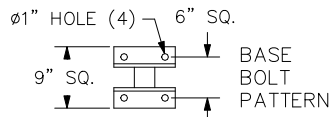


BRIDGE TROLLEY TRAVEL IS 13'-9 13/16"
ENDTRUCK TRAVEL IS 20'-9 7/16"

ANCHOR BOLT LOAD : 1.652 KIPS/BOLT
COLUMN AXIAL LOAD : 0.876 KIPS
OVERTURNING MOMENT : 2.354 KIPS-FT
HORIZONTAL LOAD : 224.264 LBS.



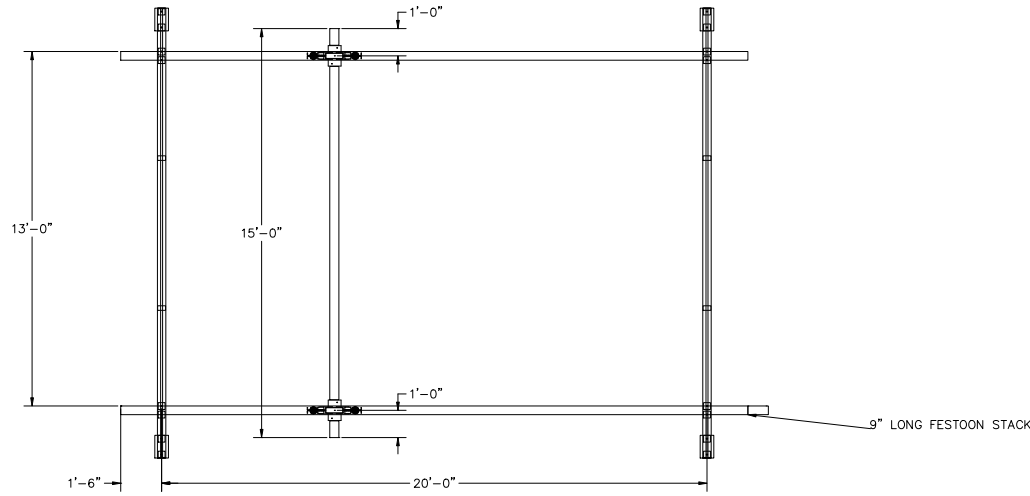
HANGERS ARE ON 20' CENTERS MAXIMUM WITH A 48" CANTILEVER ON EACH END STANDARD.
HANGER POSITION TOLERANCE = +/- 2 1/2"
HANGERS MUST BE WITHIN 48" OF SPLICE JOINT
DO NOT SCALE FROM DRAWING.
DIMENSIONS ARE STEEL TO STEEL AND MAY VARY.



CRANE INFORMATION		GORBEL 600 FISHERS RUN P.O. BOX 593 FISHERS, NY 14453-0593	
CAPACITY: 500 LBS/BR			
BRIDGE OAL: 15'			
BRIDGE SERIES: 500		BY: GORBEL	DATE: JUL 21, 2023
RUNWAY OAL: 23'		LINE #: 0	P/N: ANTSMI00006.0A
RUNWAY SERIES: 500			
TOLERANCE: ±1/8			
QUANTITY: 1			
GLCS-FS-500-15AL-23-10			
BOHL CRANE INC			

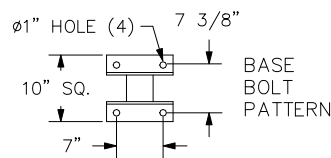
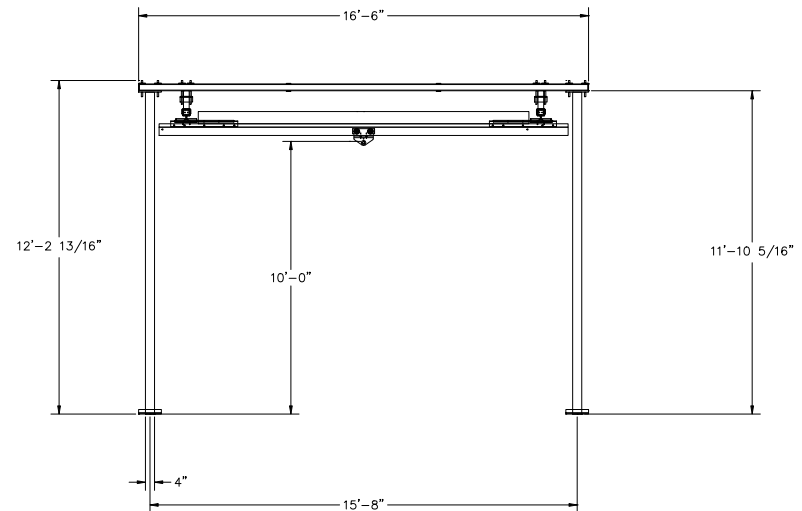
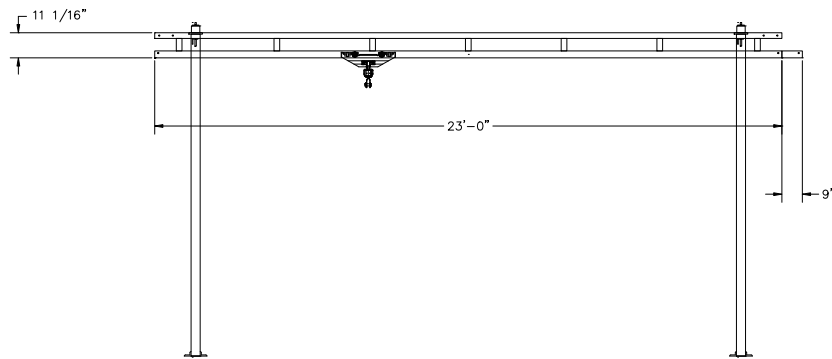
CONFIDENTIAL

SUPPORT ASSEMBLIES ARE DESIGNED TO AISC SPECIFICATIONS TO BE COMPLETELY FREESTANDING. IF NO MOVEMENT OF SUPPORT ASSEMBLIES IS REQUIRED, THEN BRACING TO BUILDING STEEL IS RECOMMENDED (NOT INCLUDED). SYSTEM IS UTILIZING NEW ALUMINUM TRACK BRIDGE(S)



BRIDGE TROLLEY TRAVEL IS 12'-3 5/8"
ENDTRUCK TRAVEL IS 20'-5 5/8"

ANCHOR BOLT LOAD : 2.853 KIPS/BOLT
COLUMN AXIAL LOAD : 1.616 KIPS
OVERTURNING MOMENT : 4.694 KIPS-FT
HORIZONTAL LOAD : 504.711 LBS.



HANGERS ARE ON 20' CENTERS MAXIMUM WITH A 48" CANTILEVER ON EACH END STANDARD. HANGER POSITION TOLERANCE = +/- 2 1/2" HANGERS MUST BE WITHIN 48" OF SPLICE JOINT DO NOT SCALE FROM DRAWING. DIMENSIONS ARE STEEL TO STEEL AND MAY VARY.

CRANE INFORMATION		GORBEL 600 FISHERS RUN P.O. BOX 593 FISHERS, NY 14453-0593	
CAPACITY: 1000 LBS/BR BRIDGE OAL: 15' BRIDGE SERIES: 1000 RUNWAY OAL: 23' RUNWAY SERIES: 1000			
TOLERANCE: ±1/8		BY: GORBEL	DATE: JUL 21, 2023
QUANTITY: 1		LINE #: 0	P/N: ANTSMI00006.0A
GLCS-FS-1000-15AL-23-10			
BOHL CRANE INC			

GORBEL

600 FISHERS RUN
P.O. BOX 593
FISHERS, NY 14453-0593

GENERAL ARRANGEMENT

BY: GORBEL DATE: JUL 21, 2023

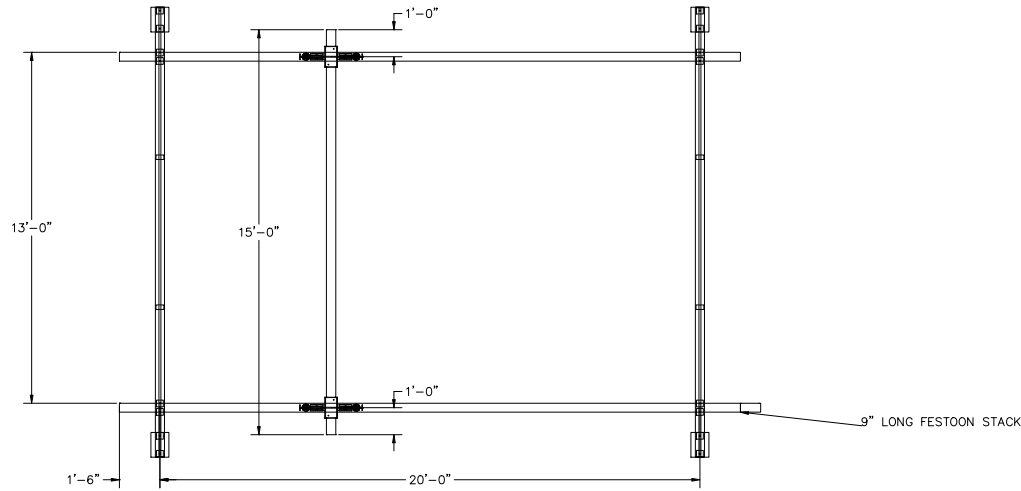
LINE #: 0 P/N: ANTSMI00006.0A

GLCS-FS-1000-15AL-23-10

BOHL CRANE INC

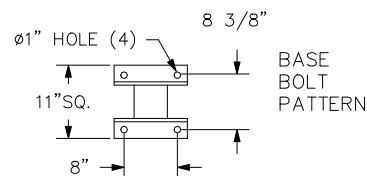
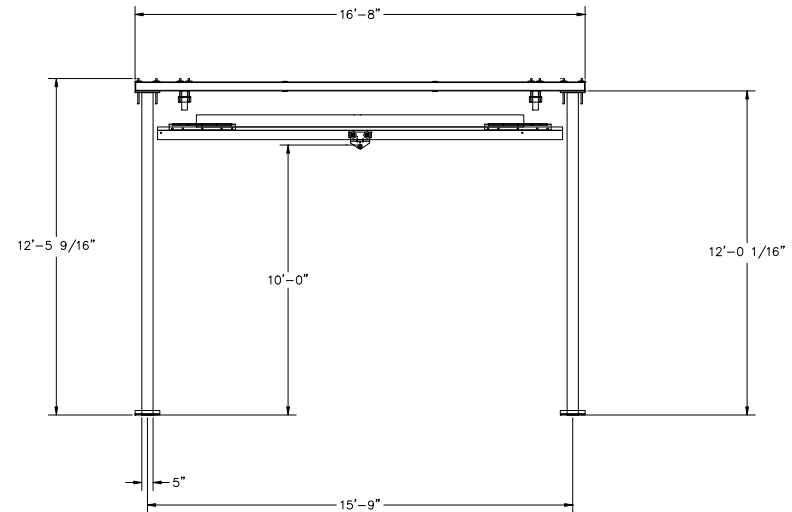
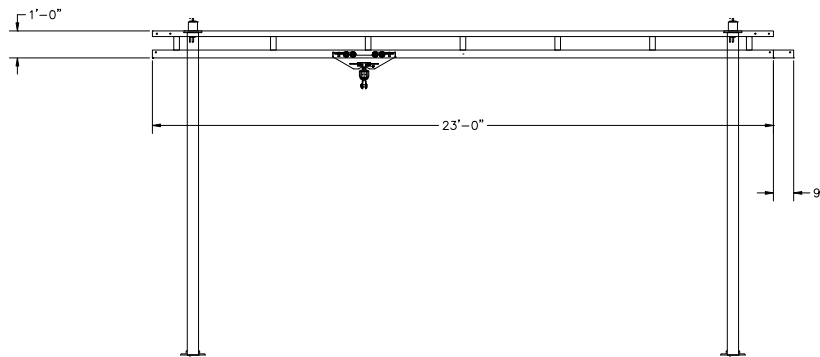
CONFIDENTIAL

SUPPORT ASSEMBLIES ARE DESIGNED TO AISC SPECIFICATIONS TO BE COMPLETELY FREESTANDING. IF NO MOVEMENT OF SUPPORT ASSEMBLIES IS REQUIRED, THEN BRACING TO BUILDING STEEL IS RECOMMENDED (NOT INCLUDED). SYSTEM IS UTILIZING NEW ALUMINUM TRACK BRIDGE(S)




BRIDGE TROLLEY TRAVEL IS 12'-3 1/4"
ENDTRUCK TRAVEL IS 20'-1 5/8"

ANCHOR BOLT LOAD : 4.706 KIPS/BOLT
COLUMN AXIAL LOAD : 2.936 KIPS
OVERTURNING MOMENT : 8.661 KIPS-FT
HORIZONTAL LOAD : 926.133 LBS.

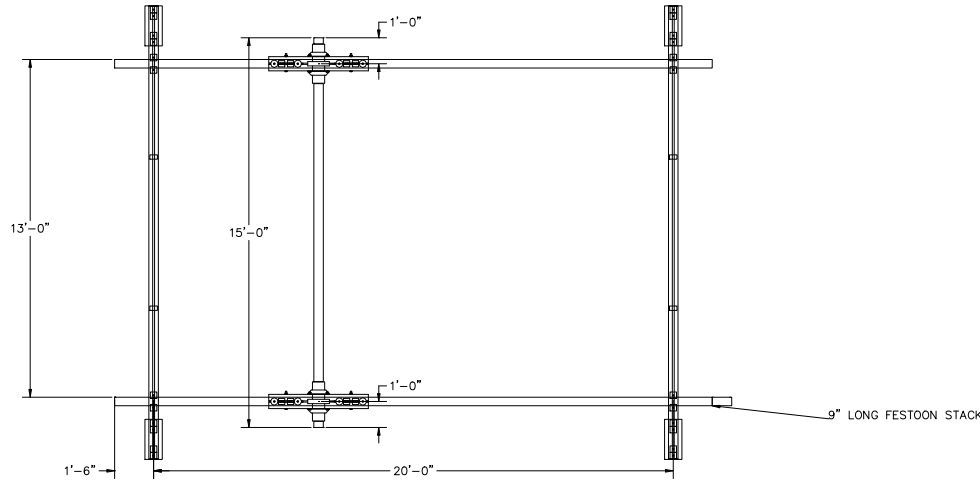


HANGERS ARE ON 20' CENTERS MAXIMUM WITH A 48" CANTILEVER ON EACH END STANDARD.
HANGER POSITION TOLERANCE = +/- 2 1/2"
HANGERS MUST BE WITHIN 48" OF SPLICE JOINT
DO NOT SCALE FROM DRAWING.
DIMENSIONS ARE STEEL TO STEEL AND MAY VARY.

CRANE INFORMATION		 600 FISHERS RUN P.O. BOX 593 FISHERS, NY 14453-0593	
CAPACITY: 2000 LBS/BR			
BRIDGE OAL: 15'			
BRIDGE SERIES: 2000		BY: GORBEL	DATE: JUL 21, 2023
RUNWAY OAL: 23'		LINE #: 0	P/N: ANTSMI00006.0A
RUNWAY SERIES: 2000			
TOLERANCE: ±1/8			
QUANTITY: 1			
GLCS-FS-2000-15AL-23-10			
BOHL CRANE INC			

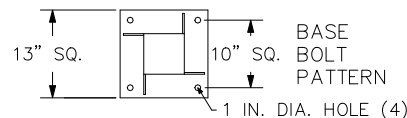
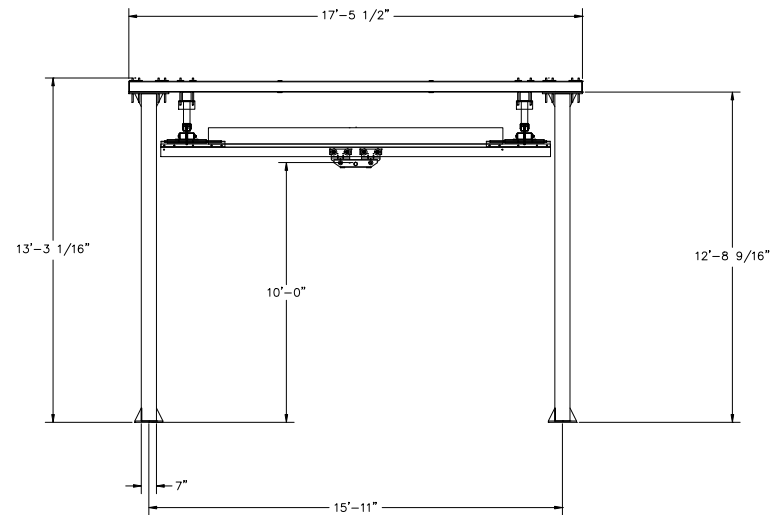
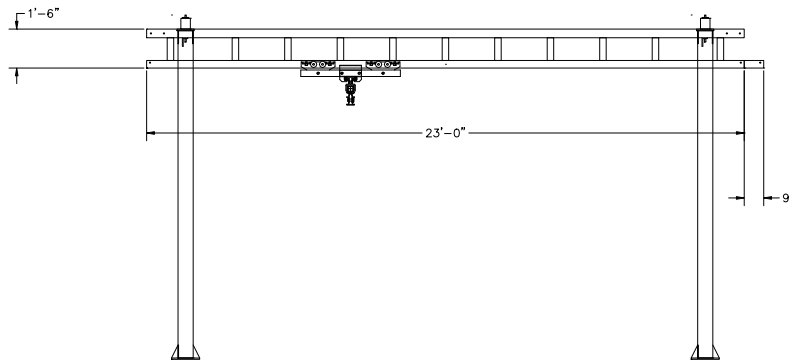
CONFIDENTIAL

SUPPORT ASSEMBLIES ARE DESIGNED TO AISC SPECIFICATIONS TO BE COMPLETELY FREESTANDING. IF NO MOVEMENT OF SUPPORT ASSEMBLIES IS REQUIRED, THEN BRACING TO BUILDING STEEL IS RECOMMENDED (NOT INCLUDED). SYSTEM IS UTILIZING NEW ALUMINUM TRACK BRIDGE(S)




BRIDGE TROLLEY TRAVEL IS 10'-8 15/16"
ENDTRUCK TRAVEL IS 18'-7 1/2"

ANCHOR BOLT LOAD : 6.569 KIPS/BOLT
COLUMN AXIAL LOAD : 5.394 KIPS
OVERTURNING MOMENT : 14.973 KIPS-FT
HORIZONTAL LOAD : 1997.882 LBS.



BASE
BOLT
PATTERN

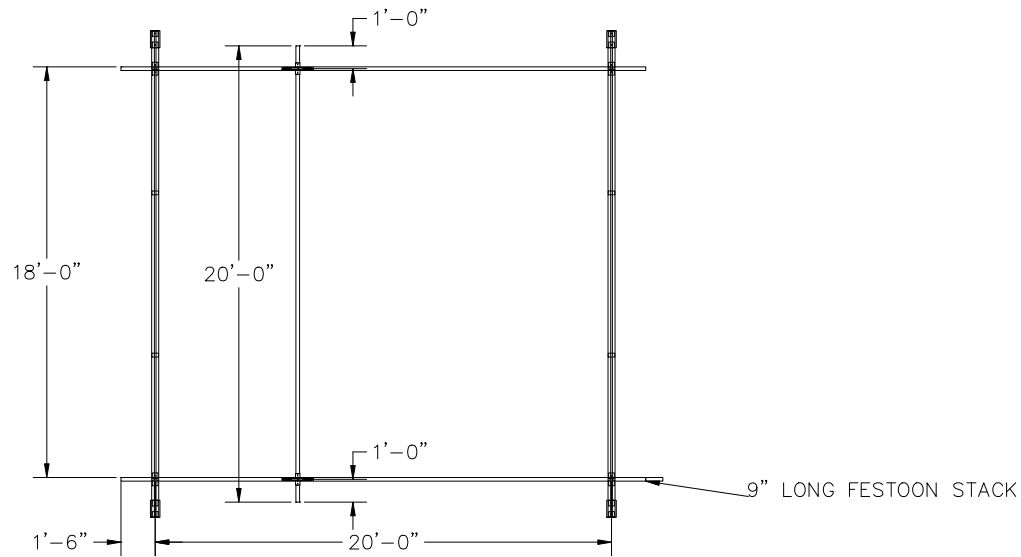
HANGERS ARE ON 20' CENTERS MAXIMUM WITH A 48" CANTILEVER ON EACH END STANDARD.
HANGER POSITION TOLERANCE = +/- 2 1/2"
HANGERS MUST BE WITHIN 48" OF SPLICE JOINT
DO NOT SCALE FROM DRAWING.
DIMENSIONS ARE STEEL TO STEEL AND MAY VARY.

CRANE INFORMATION		 600 FISHERS RUN P.O. BOX 593 FISHERS, NY 14453-0593	
CAPACITY: 4000 LBS/BR			
BRIDGE OAL: 15'			
BRIDGE SERIES: 4000			
RUNWAY OAL: 23'			
RUNWAY SERIES: 4000			
TOLERANCE: ±1/8	BY: GORBEL	DATE: JUL 21, 2023	
QUANTITY: 1	LINE #: 0	P/N: ANTSMI00006.0A	
GLCS-FS-4000-15AL-23-10			
BOHL CRANE INC			

GENERAL ARRANGEMENT

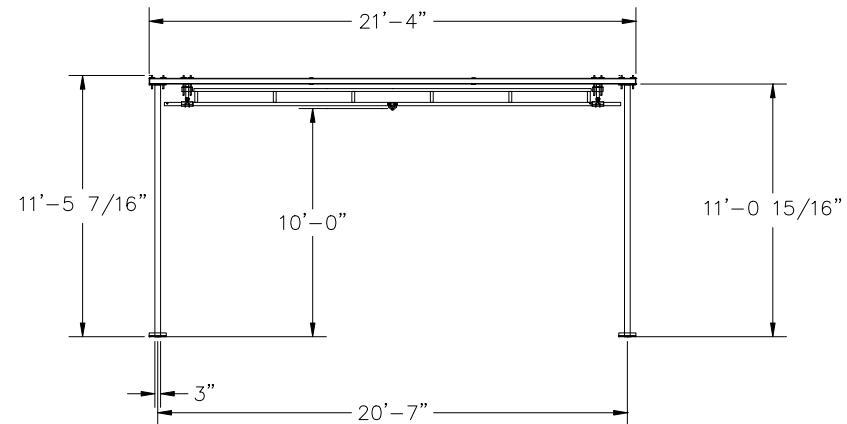
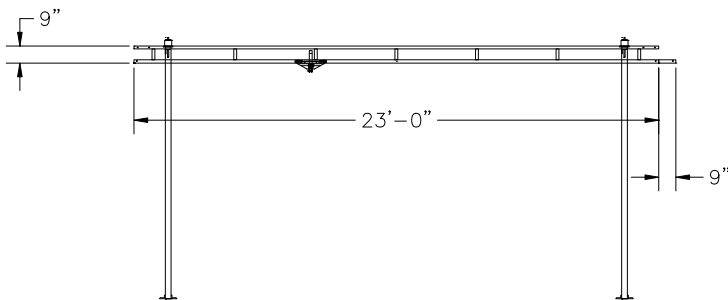
CONFIDENTIAL

SUPPORT ASSEMBLIES ARE DESIGNED TO AISC SPECIFICATIONS TO BE COMPLETELY FREESTANDING. IF NO MOVEMENT OF SUPPORT ASSEMBLIES IS REQUIRED, THEN BRACING TO BUILDING STEEL IS RECOMMENDED (NOT INCLUDED).

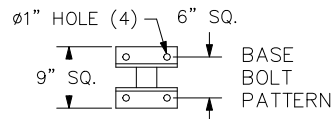



BRIDGE TROLLEY TRAVEL IS 17'-11 7/8"
ENDTRUCK TRAVEL IS 21'-2 1/2"

ANCHOR BOLT LOAD : 1.16 KIPS/BOLT
COLUMN AXIAL LOAD : 0.571 KIPS
OVERTURNING MOMENT : 1.645 KIPS-FT
HORIZONTAL LOAD : 219.927 LBS.



HANGERS ARE ON 20' CENTERS MAXIMUM WITH A 48" CANTILEVER ON EACH END STANDARD.
HANGER POSITION TOLERANCE = +/- 2 1/2"
HANGERS MUST BE WITHIN 48" OF SPLICE JOINT
DO NOT SCALE FROM DRAWING.
DIMENSIONS ARE STEEL TO STEEL AND MAY VARY.

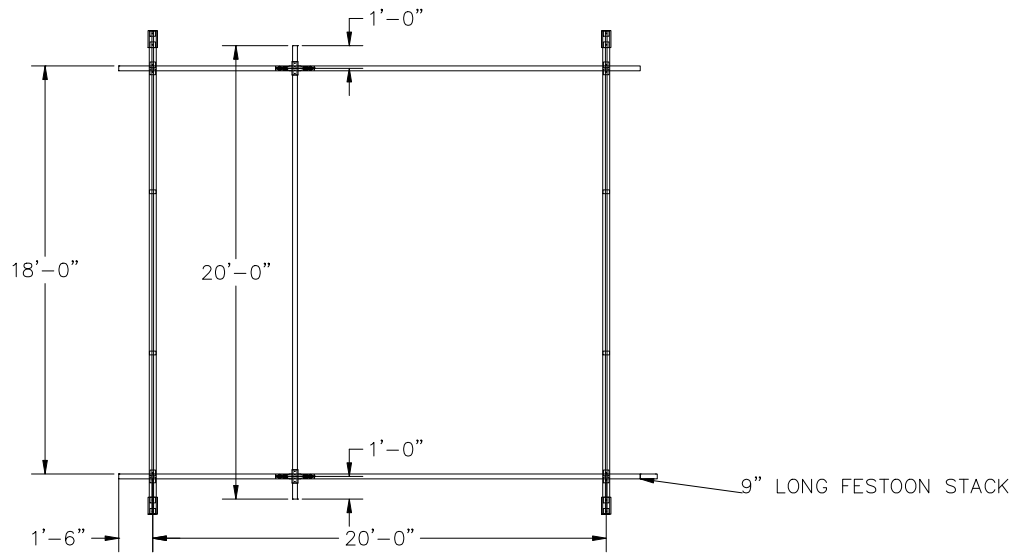


CRANE INFORMATION		 600 FISHERS RUN P.O. BOX 593 FISHERS, NY 14453-0593	
CAPACITY: 250 LBS/BR BRIDGE OAL: 20' BRIDGE SERIES: 250 RUNWAY OAL: 23' RUNWAY SERIES: 250			
TOLERANCE: ±1/8		BY: GORBEL	DATE: JUL 21, 2023
QUANTITY: 1		LINE #: 0	P/N: ANTSMI00006.0A
GLCS-FS-250-20-23-10			
BOHL CRANE INC			

GENERAL ARRANGEMENT

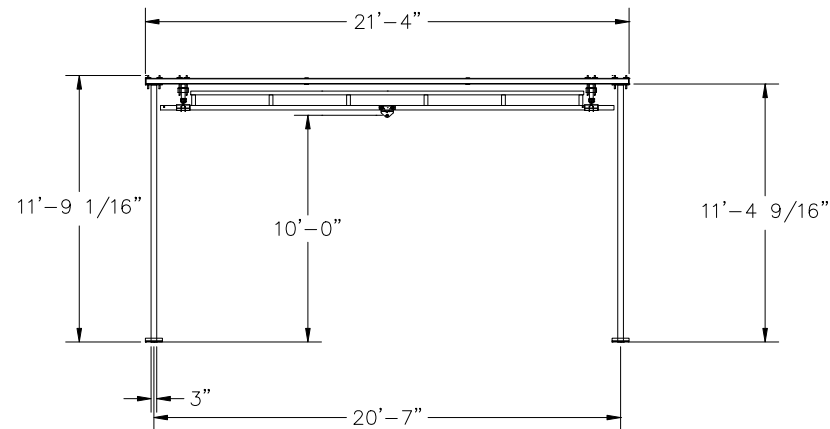
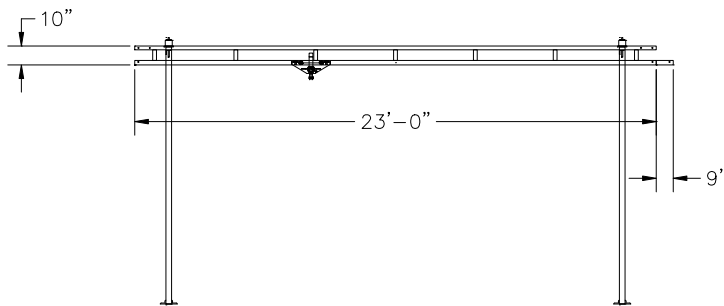
CONFIDENTIAL

SUPPORT ASSEMBLIES ARE DESIGNED TO AISC SPECIFICATIONS TO BE COMPLETELY FREESTANDING. IF NO MOVEMENT OF SUPPORT ASSEMBLIES IS REQUIRED, THEN BRACING TO BUILDING STEEL IS RECOMMENDED (NOT INCLUDED).

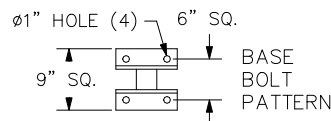


BRIDGE TROLLEY TRAVEL IS 17'-7"
ENDTRUCK TRAVEL IS 20'-9 7/16"

ANCHOR BOLT LOAD : 1.872 KIPS/BOLT
COLUMN AXIAL LOAD : 0.955 KIPS
OVERTURNING MOMENT : 2.648 KIPS-FT
HORIZONTAL LOAD : 280.924 LBS.



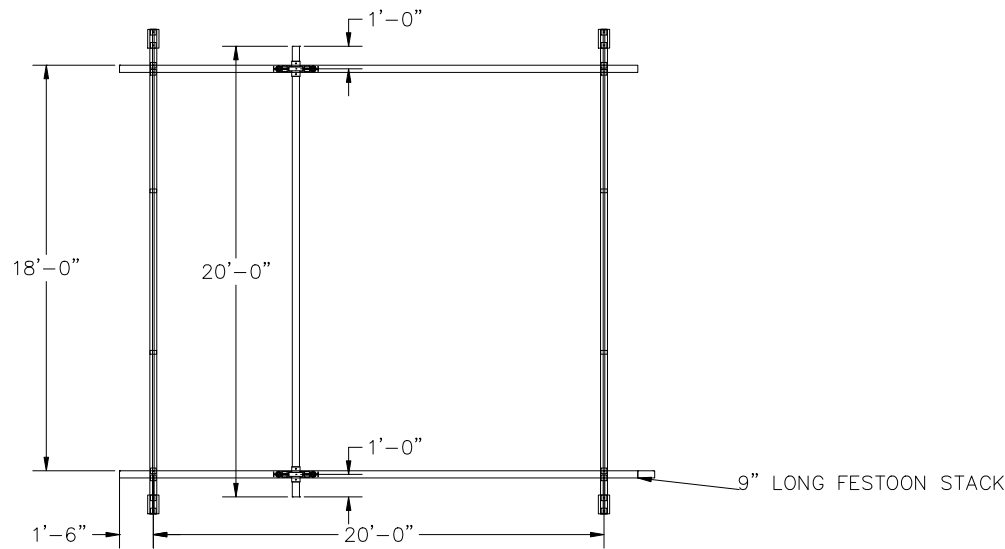
HANGERS ARE ON 20' CENTERS MAXIMUM WITH A 48" CANTILEVER ON EACH END STANDARD.
HANGER POSITION TOLERANCE = $\pm 2 \frac{1}{2}$ "
HANGERS MUST BE WITHIN 48" OF SPLICE JOINT
DO NOT SCALE FROM DRAWING.
DIMENSIONS ARE STEEL TO STEEL AND MAY VARY.



CRANE INFORMATION		GORBEL 600 FISHERS RUN P.O. BOX 593 FISHERS, NY 14453-0593	
CAPACITY: 500 LBS/BR BRIDGE OAL: 20' BRIDGE SERIES: 500 RUNWAY OAL: 23' RUNWAY SERIES: 500			
TOLERANCE: $\pm 1/8$		BY: GORBEL	DATE: JUL 21, 2023
QUANTITY: 1		LINE #: 0	P/N: ANTSMI00006.0A
GLCS-FS-500-20-23-10			
BOHL CRANE INC			

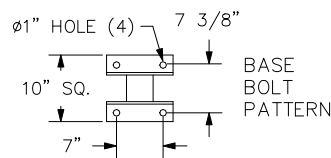
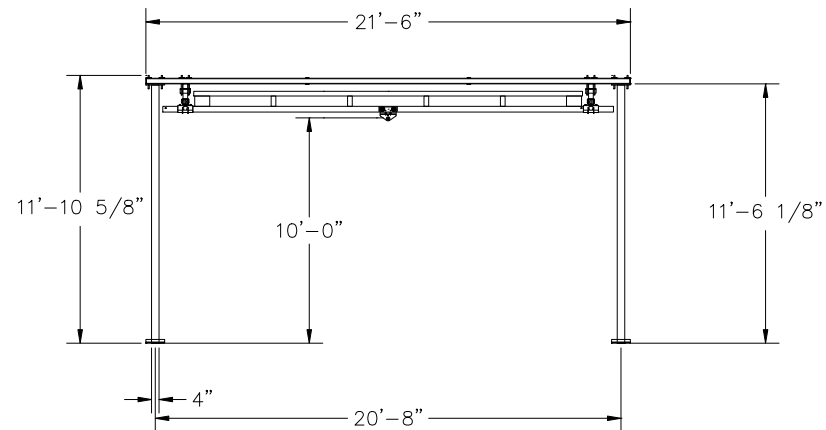
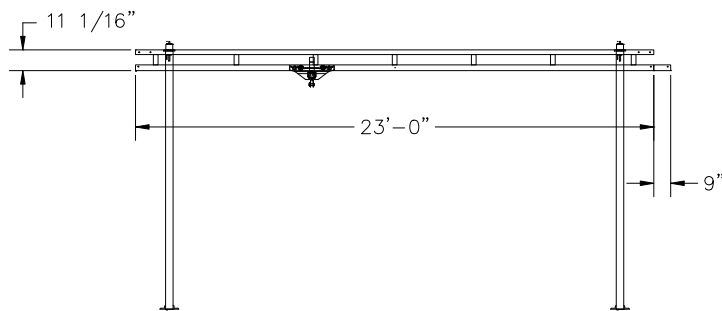
CONFIDENTIAL

SUPPORT ASSEMBLIES ARE DESIGNED TO AISC SPECIFICATIONS TO BE COMPLETELY FREESTANDING. IF NO MOVEMENT OF SUPPORT ASSEMBLIES IS REQUIRED, THEN BRACING TO BUILDING STEEL IS RECOMMENDED (NOT INCLUDED).



BRIDGE TROLLEY TRAVEL IS 17'-4 7/16"
ENDTRUCK TRAVEL IS 20'-5 5/8"

ANCHOR BOLT LOAD : 3.154 KIPS/BOLT
COLUMN AXIAL LOAD : 1.73 KIPS
OVERTURNING MOMENT : 5.155 KIPS-FT
HORIZONTAL LOAD : 590.585 LBS.

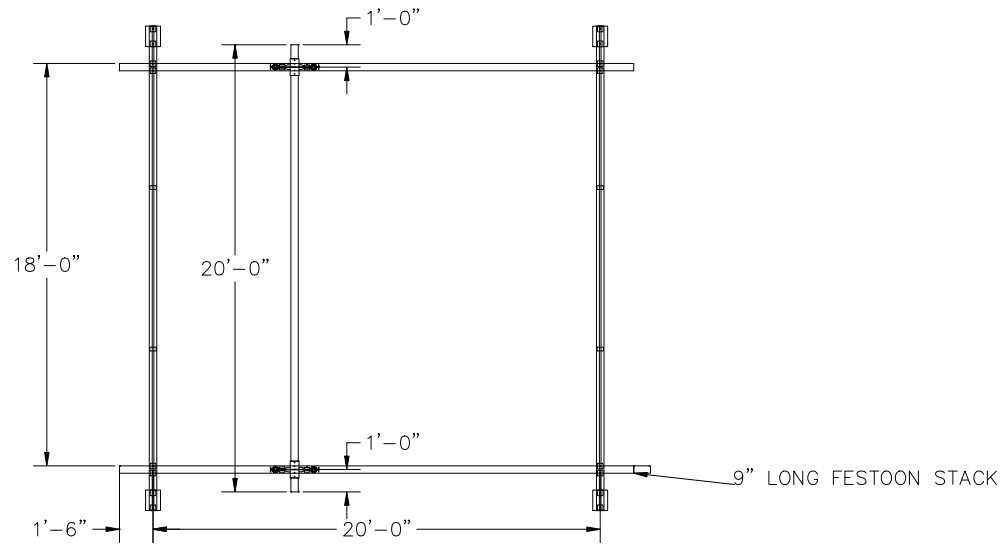


HANGERS ARE ON 20' CENTERS MAXIMUM WITH A 48" CANTILEVER ON EACH END STANDARD.
HANGER POSITION TOLERANCE = +/- 2 1/2"
HANGERS MUST BE WITHIN 48" OF SPLICE JOINT
DO NOT SCALE FROM DRAWING.
DIMENSIONS ARE STEEL TO STEEL AND MAY VARY.

CRANE INFORMATION		GORBEL 600 FISHERS RUN P.O. BOX 593 FISHERS, NY 14453-0593	
CAPACITY: 1000 LBS/BR			
BRIDGE OAL: 20'			
BRIDGE SERIES: 1000		BY: GORBEL	DATE: JUL 21, 2023
RUNWAY OAL: 23'		LINE #: 0	P/N: ANTSMI00006.0A
RUNWAY SERIES: 1000			
TOLERANCE: ±1/8			
QUANTITY: 1			
GLCS-FS-1000-20-23-10			
BOHL CRANE INC			

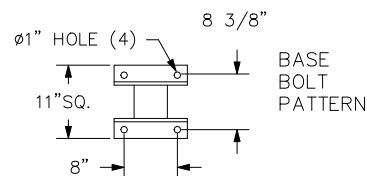
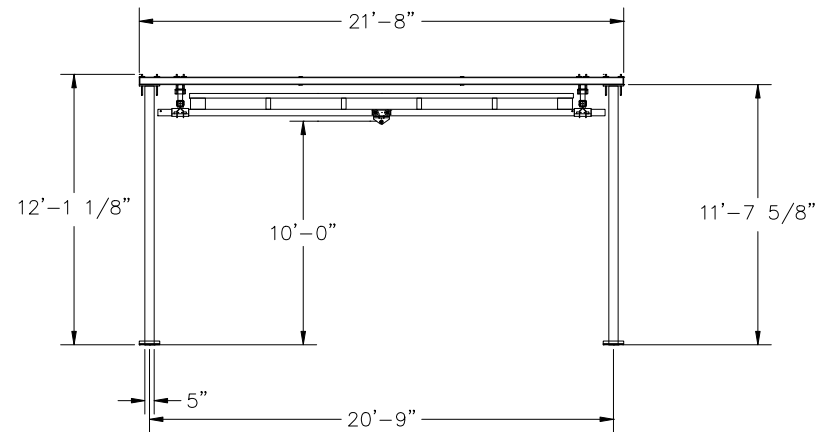
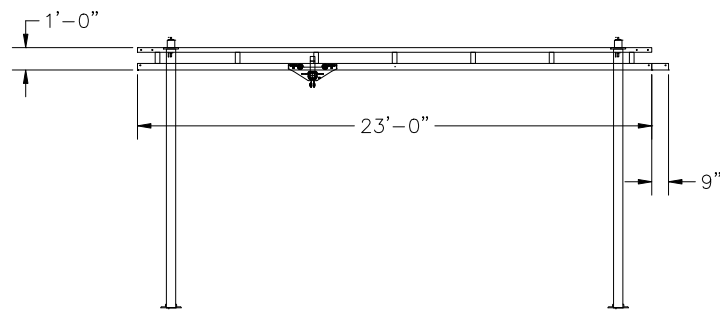
CONFIDENTIAL

SUPPORT ASSEMBLIES ARE DESIGNED TO AISC SPECIFICATIONS TO BE COMPLETELY FREESTANDING. IF NO MOVEMENT OF SUPPORT ASSEMBLIES IS REQUIRED, THEN BRACING TO BUILDING STEEL IS RECOMMENDED (NOT INCLUDED).




BRIDGE TROLLEY TRAVEL IS 17'-3 9/16"
ENDTRUCK TRAVEL IS 20'-3 1/2"

ANCHOR BOLT LOAD : 5.278 KIPS/BOLT
COLUMN AXIAL LOAD : 3.132 KIPS
OVERTURNING MOMENT : 9.61 KIPS-FT
HORIZONTAL LOAD : 1077.141 LBS.

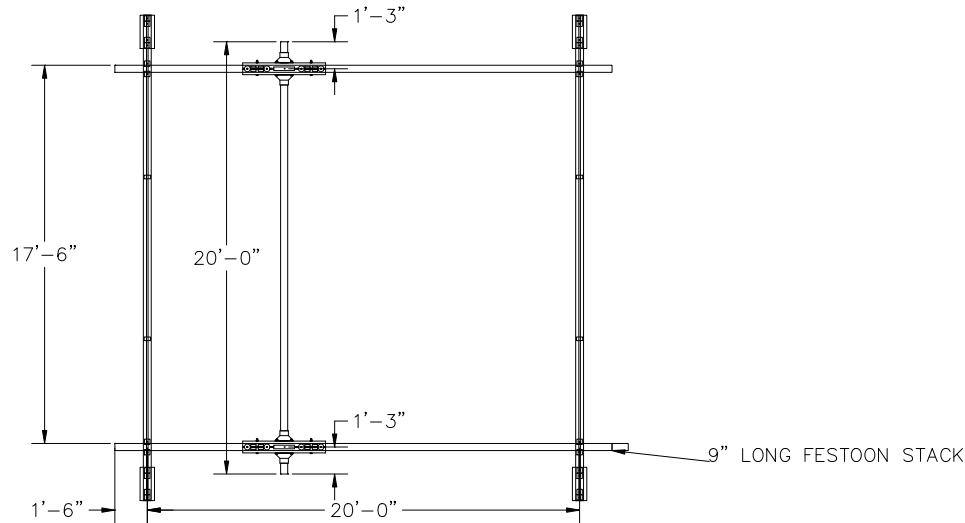


HANGERS ARE ON 20' CENTERS MAXIMUM WITH A 48" CANTILEVER ON EACH END STANDARD.
HANGER POSITION TOLERANCE = +/- 2 1/2"
HANGERS MUST BE WITHIN 48" OF SPLICE JOINT
DO NOT SCALE FROM DRAWING.
DIMENSIONS ARE STEEL TO STEEL AND MAY VARY.

CRANE INFORMATION		 600 FISHERS RUN P.O. BOX 593 FISHERS, NY 14453-0593	
CAPACITY: 2000 LBS/BR			
BRIDGE OAL: 20'			
BRIDGE SERIES: 2000		BY: GORBEL	DATE: JUL 21, 2023
RUNWAY OAL: 23'		LINE #: 0	P/N: ANTSMI00006.0A
RUNWAY SERIES: 2000			
TOLERANCE: ±1/8			
QUANTITY: 1			
GLCS-FS-2000-20-23-10			
BOHL CRANE INC			

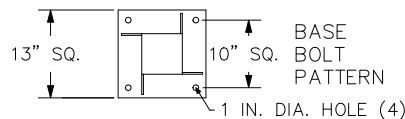
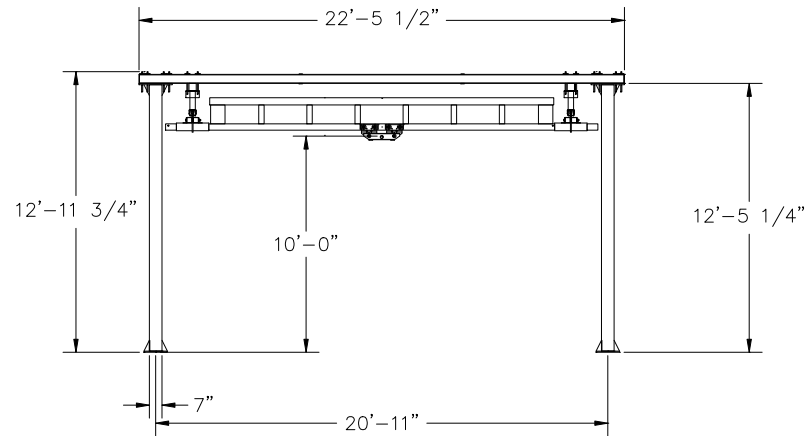
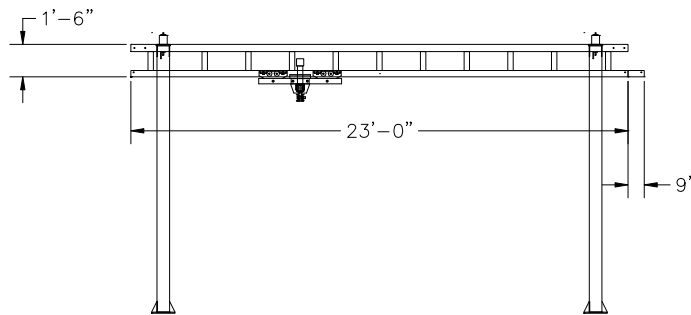
CONFIDENTIAL

SUPPORT ASSEMBLIES ARE DESIGNED TO AISC SPECIFICATIONS TO BE COMPLETELY FREESTANDING. IF NO MOVEMENT OF SUPPORT ASSEMBLIES IS REQUIRED, THEN BRACING TO BUILDING STEEL IS RECOMMENDED (NOT INCLUDED).




BRIDGE TROLLEY TRAVEL IS 15'-6 1/16"
ENDTRUCK TRAVEL IS 18'-7 1/2"

ANCHOR BOLT LOAD : 7.032 KIPS/BOLT
COLUMN AXIAL LOAD : 5.626 KIPS
OVERTURNING MOMENT : 15.916 KIPS-FT
HORIZONTAL LOAD : 2220.326 LBS.



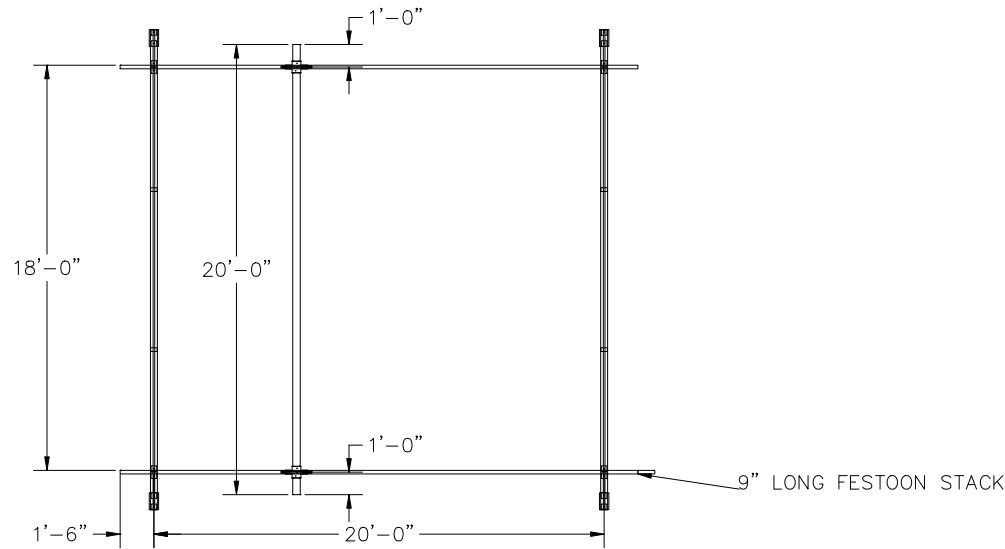
BASE
BOLT
PATTERN

HANGERS ARE ON 20' CENTERS MAXIMUM WITH A 48" CANTILEVER ON EACH END STANDARD.
HANGER POSITION TOLERANCE = +/- 2 1/2"
HANGERS MUST BE WITHIN 48" OF SPLICE JOINT
DO NOT SCALE FROM DRAWING.
DIMENSIONS ARE STEEL TO STEEL AND MAY VARY.

CRANE INFORMATION		 600 FISHERS RUN P.O. BOX 593 FISHERS, NY 14453-0593	
CAPACITY: 4000 LBS/BR			
BRIDGE OAL: 20'			
BRIDGE SERIES: 4000		BY: GORBEL	
RUNWAY OAL: 23'		DATE: JUL 21, 2023	
RUNWAY SERIES: 4000		LINE #: 0	
TOLERANCE: ±1/8		P/N: ANTSMI00006.0A	
QUANTITY: 1			
GLCS-FS-4000-20-23-10			
BOHL CRANE INC			

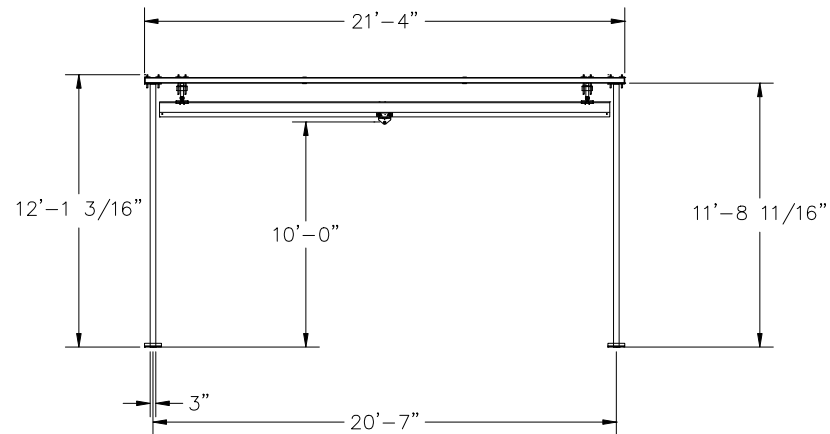
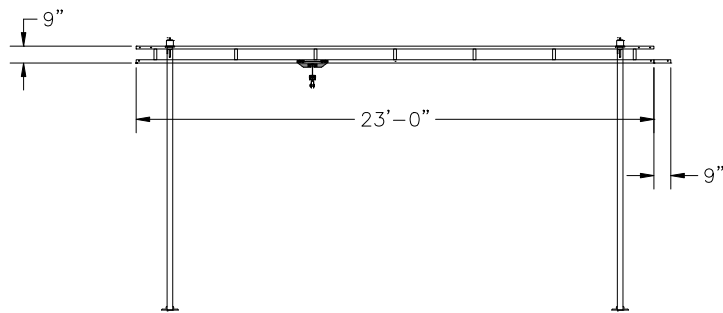
CONFIDENTIAL

SUPPORT ASSEMBLIES ARE DESIGNED TO AISC SPECIFICATIONS TO BE COMPLETELY FREESTANDING. IF NO MOVEMENT OF SUPPORT ASSEMBLIES IS REQUIRED, THEN BRACING TO BUILDING STEEL IS RECOMMENDED (NOT INCLUDED).

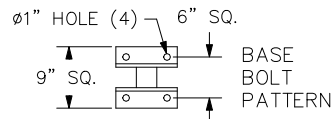



BRIDGE TROLLEY TRAVEL IS 18'-9 13/16"
ENDTRUCK TRAVEL IS 20'-10 3/8"

ANCHOR BOLT LOAD : 1.097 KIPS/BOLT
COLUMN AXIAL LOAD : 0.563 KIPS
OVERTURNING MOMENT : 1.565 KIPS-FT
HORIZONTAL LOAD : 191.828 LBS.



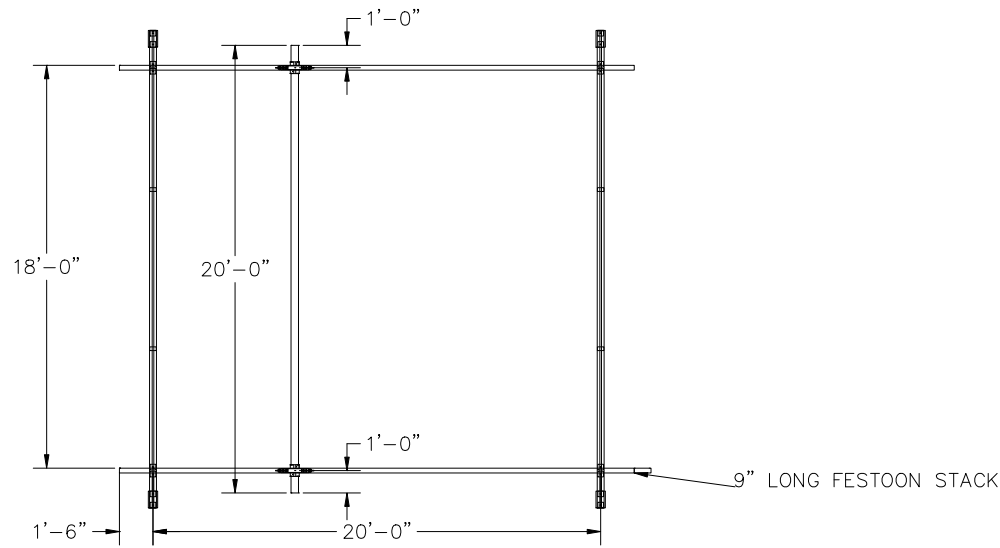
HANGERS ARE ON 20' CENTERS MAXIMUM WITH A 48" CANTILEVER ON EACH END STANDARD.
HANGER POSITION TOLERANCE = +/- 2 1/2"
HANGERS MUST BE WITHIN 48" OF SPLICE JOINT
DO NOT SCALE FROM DRAWING.
DIMENSIONS ARE STEEL TO STEEL AND MAY VARY.



CRANE INFORMATION		 600 FISHERS RUN P.O. BOX 593 FISHERS, NY 14453-0593	
CAPACITY: 250 LBS/BR			
BRIDGE OAL: 20'			
BRIDGE SERIES: 250		BY: GORBEL	DATE: JUL 21, 2023
RUNWAY OAL: 23'		LINE #: 0	P/N: ANTSMI00006.0A
RUNWAY SERIES: 250			
TOLERANCE: ±1/8			
QUANTITY: 1			
GLCS-FS-250-20AL-23-10			
BOHL CRANE INC			

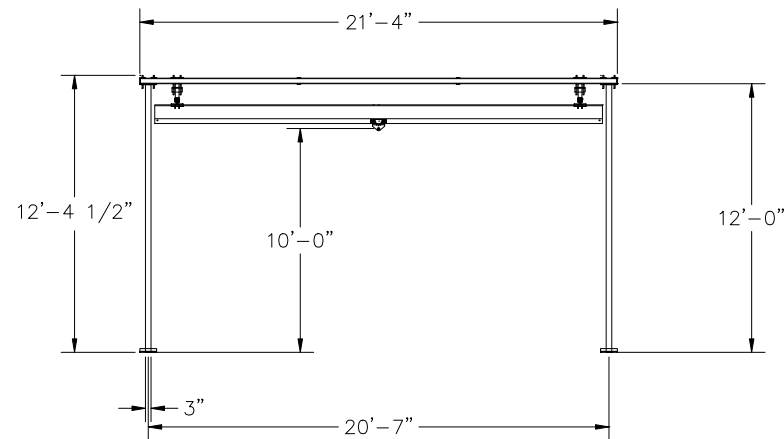
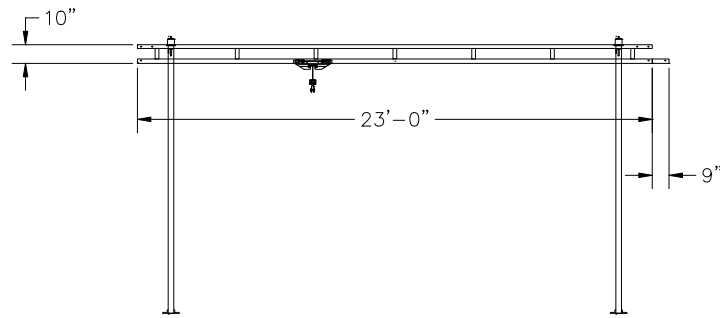
CONFIDENTIAL

SUPPORT ASSEMBLIES ARE DESIGNED TO AISC SPECIFICATIONS TO BE COMPLETELY FREESTANDING. IF NO MOVEMENT OF SUPPORT ASSEMBLIES IS REQUIRED, THEN BRACING TO BUILDING STEEL IS RECOMMENDED (NOT INCLUDED).

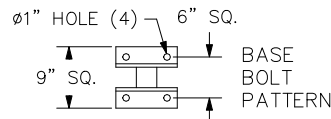


BRIDGE TROLLEY TRAVEL IS 18'-9 13/16"
ENDTRUCK TRAVEL IS 20'-9 7/16"

ANCHOR BOLT LOAD : 1.725 KIPS/BOLT
COLUMN AXIAL LOAD : 0.924 KIPS
OVERTURNING MOMENT : 2.46 KIPS-FT
HORIZONTAL LOAD : 235.226 LBS.



HANGERS ARE ON 20' CENTERS MAXIMUM WITH A 48" CANTILEVER ON EACH END STANDARD.
HANGER POSITION TOLERANCE = +/- 2 1/2"
HANGERS MUST BE WITHIN 48" OF SPLICE JOINT
DO NOT SCALE FROM DRAWING.
DIMENSIONS ARE STEEL TO STEEL AND MAY VARY.

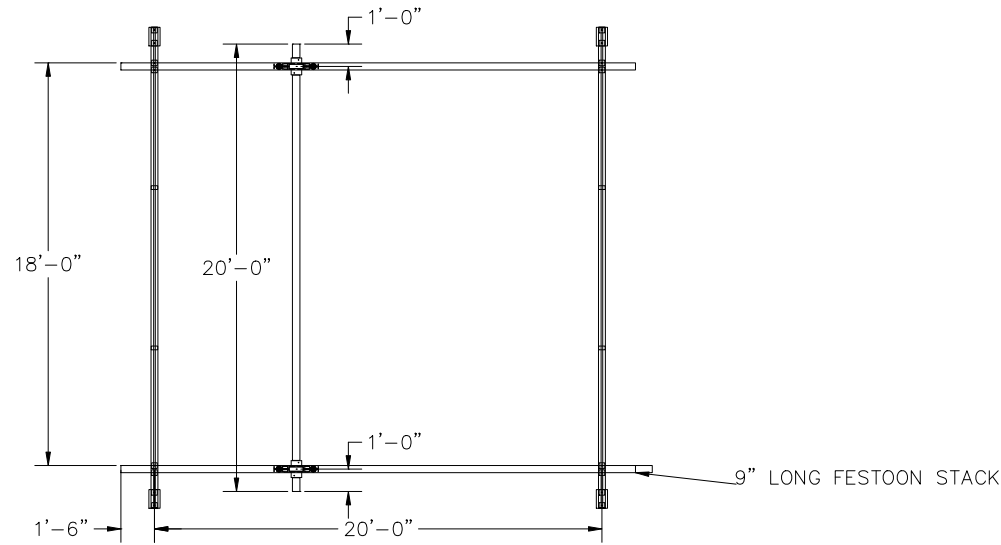


CRANE INFORMATION		GORBEL 600 FISHERS RUN P.O. BOX 593 FISHERS, NY 14453-0593	
CAPACITY: 500 LBS/BR BRIDGE OAL: 20' BRIDGE SERIES: 500 RUNWAY OAL: 23' RUNWAY SERIES: 500			
TOLERANCE: ±1/8		BY: GORBEL	DATE: JUL 21, 2023
QUANTITY: 1		LINE #: 0	P/N: ANTSMI00006.0A
GLCS-FS-500-20AL-23-10			
BOHL CRANE INC			

GENERAL ARRANGEMENT

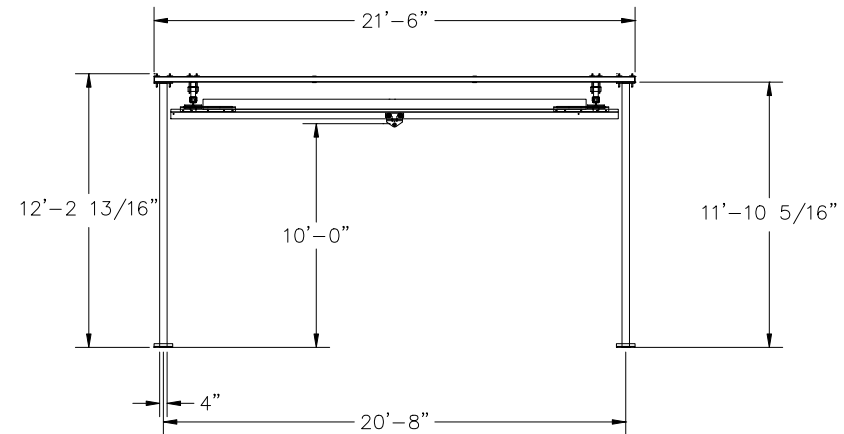
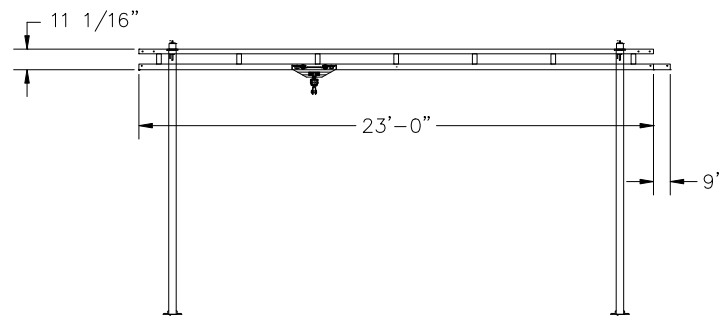
CONFIDENTIAL

SUPPORT ASSEMBLIES ARE DESIGNED TO AISC SPECIFICATIONS TO BE COMPLETELY FREESTANDING. IF NO MOVEMENT OF SUPPORT ASSEMBLIES IS REQUIRED, THEN BRACING TO BUILDING STEEL IS RECOMMENDED (NOT INCLUDED). SYSTEM IS UTILIZING NEW ALUMINUM TRACK BRIDGE(S)



BRIDGE TROLLEY TRAVEL IS 17'-1/4"
ENDTRUCK TRAVEL IS 20'-5 5/8"

ANCHOR BOLT LOAD : 2.978 KIPS/BOLT
COLUMN AXIAL LOAD : 1.687 KIPS
OVERTURNING MOMENT : 4.895 KIPS-FT
HORIZONTAL LOAD : 527.657 LBS.



CRANE INFORMATION

CAPACITY: 1000 LBS/BR
BRIDGE OAL: 20'
BRIDGE SERIES: 1000
RUNWAY OAL: 23'
RUNWAY SERIES: 1000

GORBEL

600 FISHERS RUN
P.O. BOX 593
FISHERS, NY 14453-0593

GENERAL ARRANGEMENT

TOLERANCE: ±1/8

BY: GORBEL

DATE: JUL 21, 2023

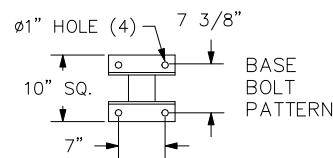
QUANTITY: 1

LINE #:0

P/N:ANTSMI00006.0A

GLCS-FS-1000-20AL-23-10

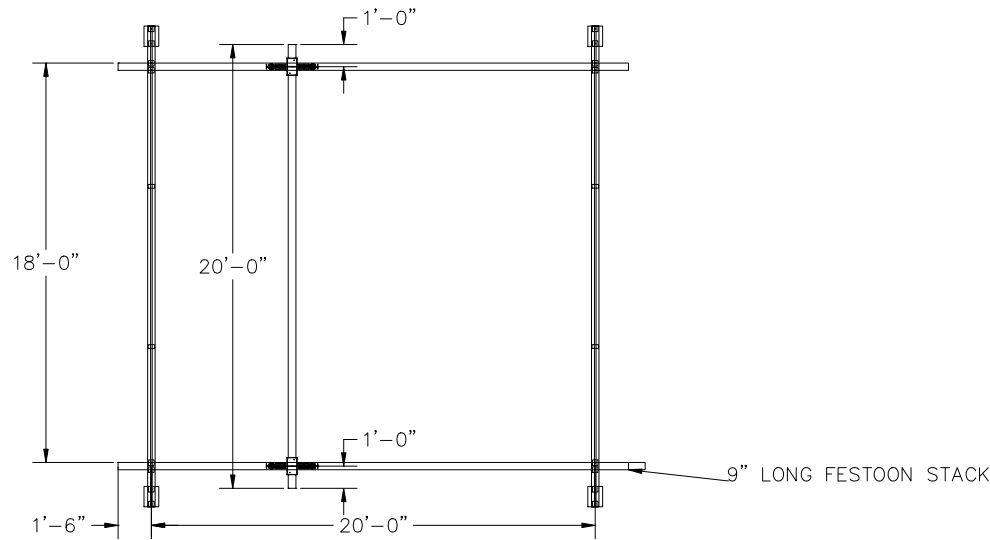
BOHL CRANE INC



HANGERS ARE ON 20' CENTERS MAXIMUM WITH A 48" CANTILEVER ON EACH END STANDARD.
HANGER POSITION TOLERANCE = +/- 2 1/2"
HANGERS MUST BE WITHIN 48" OF SPLICE JOINT
DO NOT SCALE FROM DRAWING.
DIMENSIONS ARE STEEL TO STEEL AND MAY VARY.

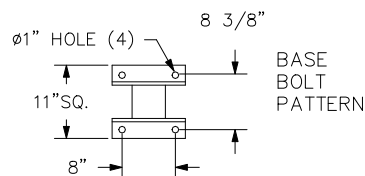
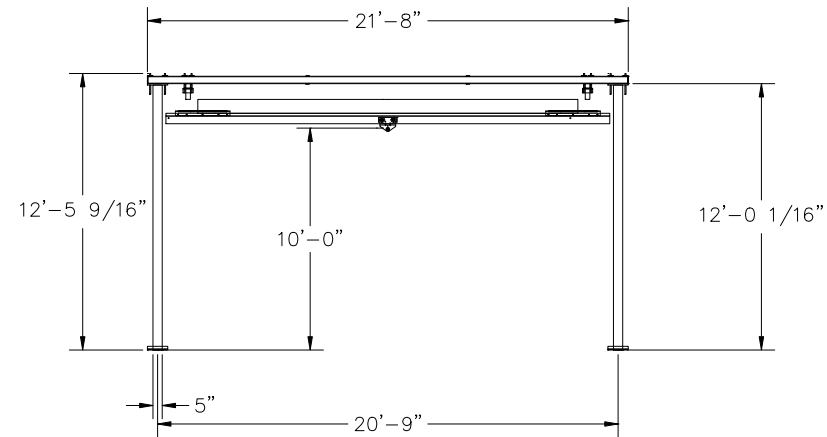
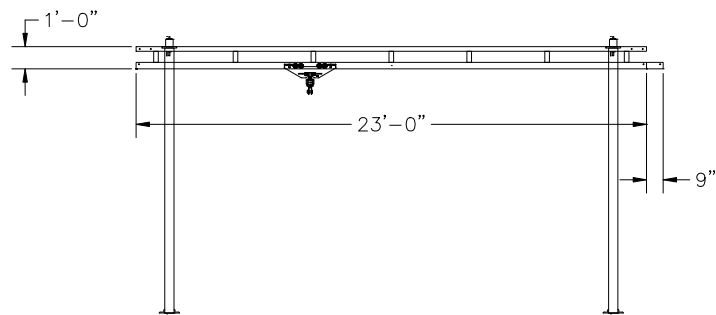
CONFIDENTIAL

SUPPORT ASSEMBLIES ARE DESIGNED TO AISC SPECIFICATIONS TO BE COMPLETELY FREESTANDING. IF NO MOVEMENT OF SUPPORT ASSEMBLIES IS REQUIRED, THEN BRACING TO BUILDING STEEL IS RECOMMENDED (NOT INCLUDED). SYSTEM IS UTILIZING NEW ALUMINUM TRACK BRIDGE(S)




BRIDGE TROLLEY TRAVEL IS 16'-11 7/8"
ENDTRUCK TRAVEL IS 20'-1 5/8"

ANCHOR BOLT LOAD : 4.893 KIPS/BOLT
COLUMN AXIAL LOAD : 3.054 KIPS
OVERTURNING MOMENT : 8.993 KIPS-FT
HORIZONTAL LOAD : 962.739 LBS.

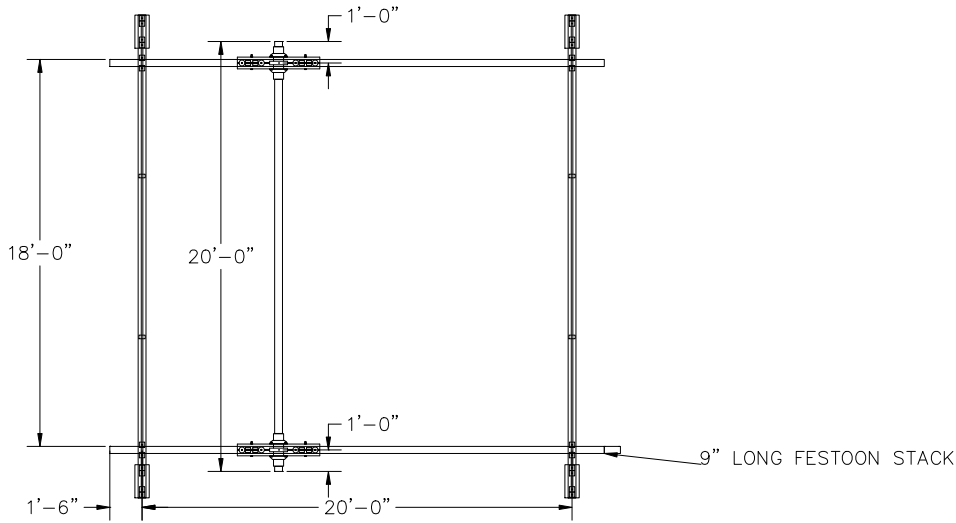


HANGERS ARE ON 20' CENTERS MAXIMUM WITH A 48" CANTILEVER ON EACH END STANDARD.
HANGER POSITION TOLERANCE = +/- 2 1/2"
HANGERS MUST BE WITHIN 48" OF SPLICE JOINT
DO NOT SCALE FROM DRAWING.
DIMENSIONS ARE STEEL TO STEEL AND MAY VARY.

CRANE INFORMATION		 600 FISHERS RUN P.O. BOX 593 FISHERS, NY 14453-0593	
CAPACITY: 2000 LBS/BR BRIDGE OAL: 20' BRIDGE SERIES: 2000 RUNWAY OAL: 23' RUNWAY SERIES: 2000			
TOLERANCE: ±1/8		BY: GORBEL	DATE: JUL 21, 2023
QUANTITY: 1		LINE #: 0	P/N: ANTSMI00006.0A
GLCS-FS-2000-20AL-23-10			
BOHL CRANE INC			

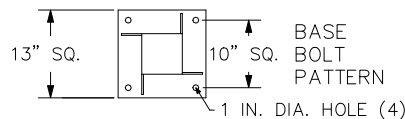
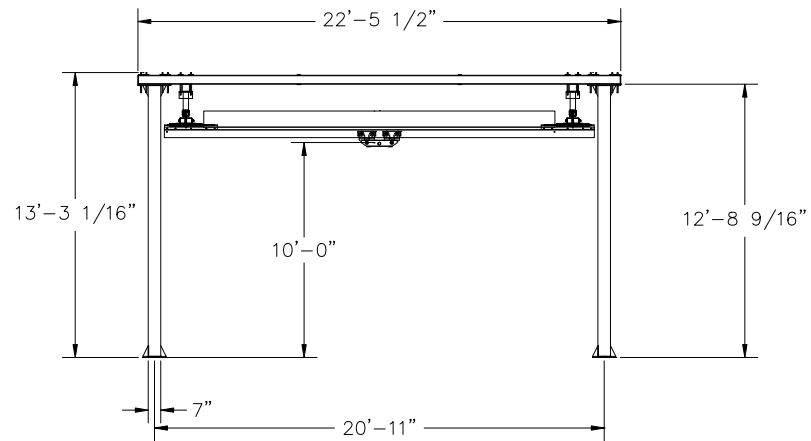
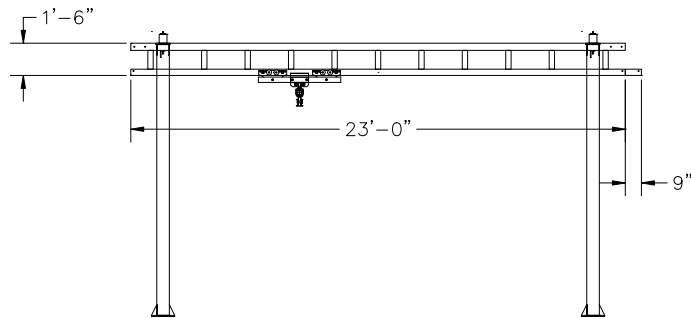
CONFIDENTIAL

SUPPORT ASSEMBLIES ARE DESIGNED TO AISC SPECIFICATIONS TO BE COMPLETELY FREESTANDING. IF NO MOVEMENT OF SUPPORT ASSEMBLIES IS REQUIRED, THEN BRACING TO BUILDING STEEL IS RECOMMENDED (NOT INCLUDED). SYSTEM IS UTILIZING NEW ALUMINUM TRACK BRIDGE(S)




BRIDGE TROLLEY TRAVEL IS 15'-8 15/16"
ENDTRUCK TRAVEL IS 18'-7 1/2"

ANCHOR BOLT LOAD : 6.785 KIPS/BOLT
COLUMN AXIAL LOAD : 5.585 KIPS
OVERTURNING MOMENT : 15.453 KIPS-FT
HORIZONTAL LOAD : 2056.535 LBS.



BASE
BOLT
PATTERN

HANGERS ARE ON 20' CENTERS MAXIMUM WITH A 48" CANTILEVER ON EACH END STANDARD.
HANGER POSITION TOLERANCE = +/- 2 1/2"
HANGERS MUST BE WITHIN 48" OF SPLICE JOINT
DO NOT SCALE FROM DRAWING.
DIMENSIONS ARE STEEL TO STEEL AND MAY VARY.

CRANE INFORMATION		 600 FISHERS RUN P.O. BOX 593 FISHERS, NY 14453-0593	
CAPACITY: 4000 LBS/BR			
BRIDGE OAL: 20'			
BRIDGE SERIES: 4000		BY: GORBEL	
RUNWAY OAL: 23'		DATE: JUL 21, 2023	
RUNWAY SERIES: 4000		LINE #: 0	
TOLERANCE: ±1/8		P/N: ANTSMI00006.0A	
QUANTITY: 1			
GLCS-FS-4000-20AL-23-10			
BOHL CRANE INC			