

AH Mini-Cat Air Powered Hoists with Pendant and Cord Controls and Hook Suspension

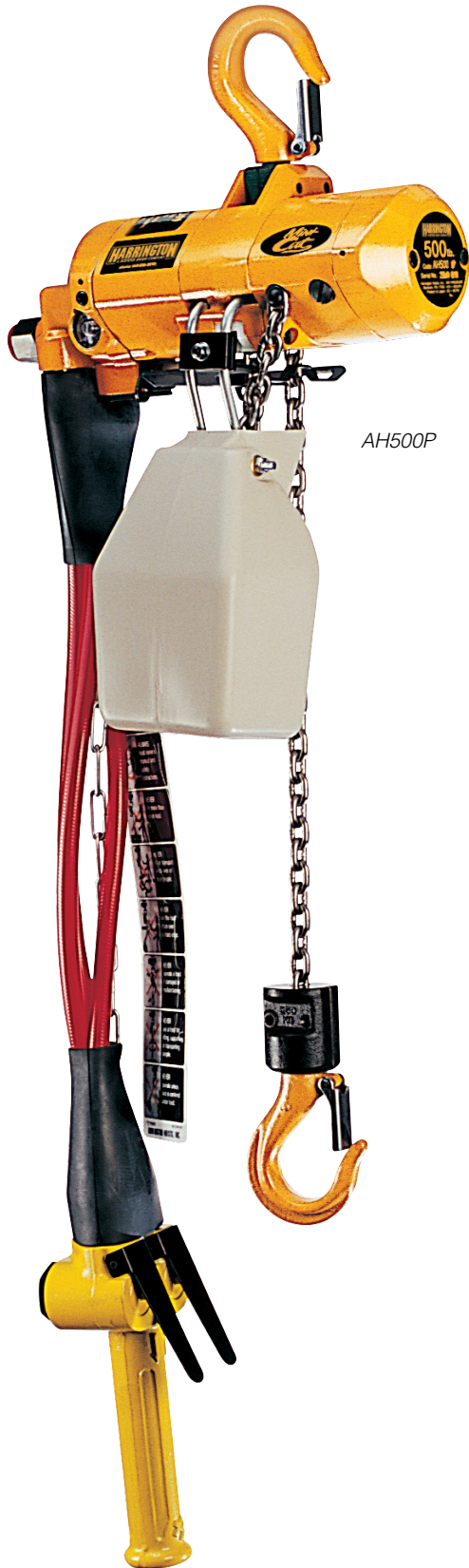
The AH Mini-Cat Series of air hoists was designed with exceptionally low headroom and will easily handle many construction, assembly line and workstation applications.

Features and Benefits

- Unlimited Duty Cycle**
For continuous operation
- Extremely Compact & Lightweight Body**
Allows for easy operation,
transportation and storage
- Airtight Hoist**
Results in efficient use of air
- High Speed Lifting**
Maximum speed gets jobs done quickly
- Vane Motor Design**
Permits very fine feathering control
- Aluminum Valve Section**
Reduces effects of corrosion
- Low Noise Levels**
Adds to operator comfort
- Disc Motor Brake System**
For reliable load support
- Nickel Plated Load Chain**
Resistant to corrosion, abrasion and wear

Standard Hoist Specifications

- Capacity Range**
250 – 500 lb.
- Standard Lift**
10'
(longer lifts available)
- Standard Pendant or Cord Length**
Hangs approximately 4' above the
hoist's fully extended bottom hook
(longer lengths available)
- Air Supply Requirement**
19 – 34 cfm at 60 – 90 psi
- Air Lubrication Requirement**
Minimum 10 to 15 drops of oil
per minute (0.2 – 0.3 cc/min.)
- Air Filtration**
Maximum 5 micron air filter or finer required
- Air Inlet Port**
3/8" NPT
- Air Supply Hose Minimum Size**
3/8"
- Operating Conditions**
Temperature range +14° to 140°F
Humidity 85% or less
- Chain Containers**
Optional
Plastic



AH500P



AH500C

AH Mini-Cat Air Powered Hoists with Pendant and Cord Controls and Hook Suspension

PENDANT MODEL—SPECIFICATIONS

Capacity (lbs)	Product Code	Headroom (in)	Standard Lift (ft)	Load Chain Dia. (mm) x Chain Fall Lines	Net Weight with Standard Lift (lbs)	Weight for Additional One Foot of Lift (lbs)
250	AH250P	12.0	10	4 x 1	19	0.49
500	AH500P	12.0	10	4 x 1	19	0.49

Speeds—ft/min at 90 psi:

Capacity (lbs)	Product Code	Up		Down	
		Full Load	No Load	Full Load	No Load
250	AH250P	42 (33)	55 (48)	48 (45)	43 (38)
500	AH500P	29 (18)	55 (48)	53 (51)	43 (38)

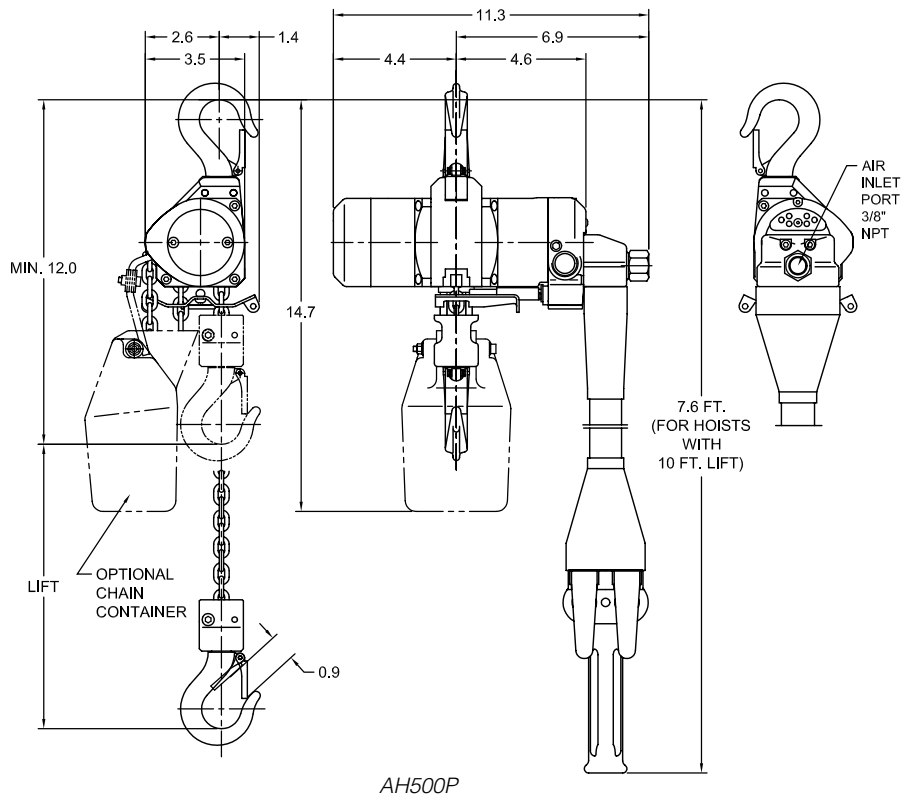
Air Consumption—cfm at 90 psi:

Capacity (lbs)	Product Code	Up		Down	
		Full Load	No Load	Full Load	No Load
250	AH250P	28 (21)	31 (24)	27 (21)	26 (20)
500	AH500P	26 (19)	31 (24)	28 (22)	26 (20)

Values in parentheses for air supply at 60 psi.

PENDANT MODEL—DIMENSIONS

Measurements in inches



CORD MODEL—SPECIFICATIONS

Capacity (lbs)	Product Code	Headroom (in)	Standard Lift (ft)	Load Chain Dia. (mm) x Chain Fall Lines	Net Weight with Standard Lift (lbs)	Weight for Additional One Foot of Lift (lbs)
250	AH250C	12.0	10	4 x 1	15	0.26
500	AH500C	12.0	10	4 x 1	15	0.26

Speeds—ft/min at 90 psi:

Capacity (lbs)	Product Code	Up		Down	
		Full Load	No Load	Full Load	No Load
250	AH250C	47 (37)	61 (53)	51 (47)	45 (40)
500	AH500C	32 (20)	61 (53)	56 (54)	45 (40)

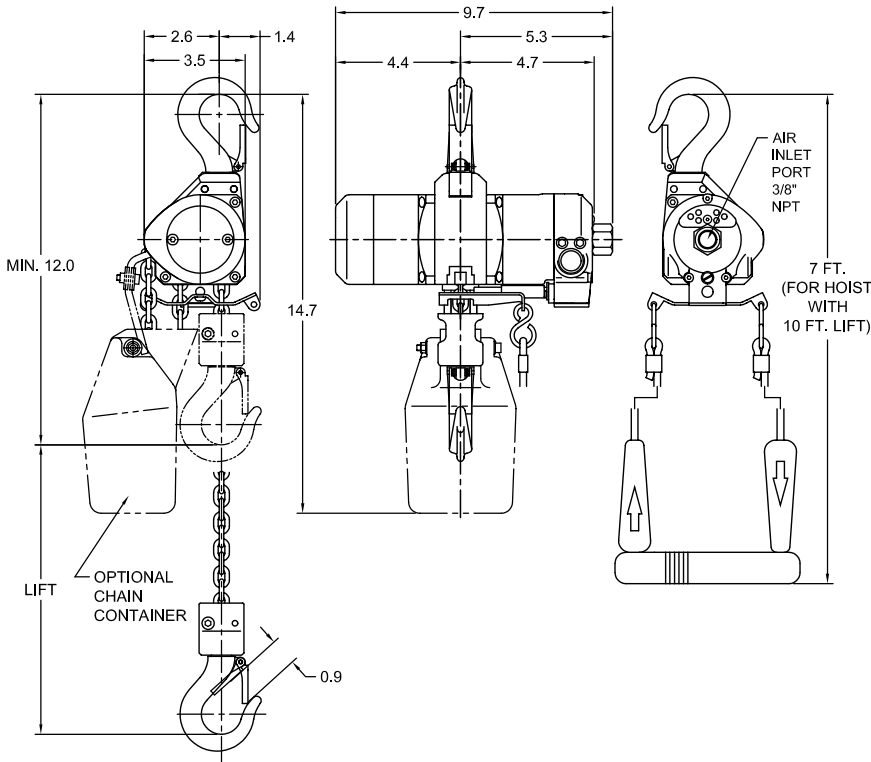
Air Consumption—cfm at 90 psi:

Capacity (lbs)	Product Code	Up		Down	
		Full Load	No Load	Full Load	No Load
250	AH250C	32 (24)	34 (27)	30 (24)	28 (23)
500	AH500C	29 (21)	34 (27)	32 (26)	28 (23)

Values in parentheses for air supply at 60 psi.

CORD MODEL—DIMENSIONS

Measurements in inches



AH500C

AH Mini-Cat Air Powered Hoists with Manipulator Control and Hook Suspension

Harrington's AH Mini-Cat Series air hoists also offer a unique ergonomic manipulator control feature designed to support the special repetitive working practices of assembly line and workstation areas in a wide variety of industries.

Refer to page 38 for standard hoist specifications.

Unique Features and Benefits

Manipulator Control

Unique one-handed control replaces standard pendant or cord.

This design is adjustable for either left- or right-handed operation.

Permits the operator to have a free hand to easily position the load.

Unique Hoist Specifications

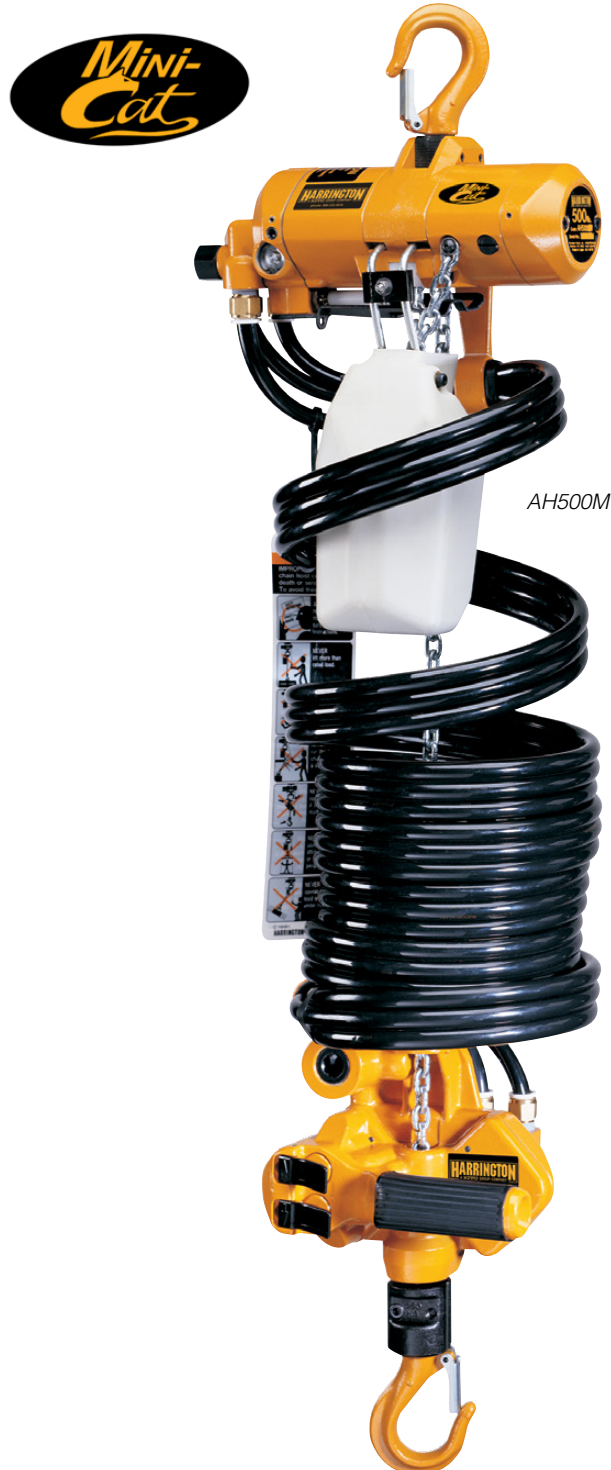
Standard Lengths

6.5' Lift — 9' reach (approx.)

13' lift — 17' reach (approx.)
(reach equals lift plus headroom)

Chain Containers

Standard
Plastic



AH500M



MANIPULATOR MODEL—SPECIFICATIONS

Capacity (lbs)	Product Code	Headroom (in)	Standard Lift (ft)	Load Chain Dia. (mm) x Chain Fall Lines	Net Weight with Standard Lift (lbs)	Weight for Additional One Foot of Lift (lbs)
250	AH250M	33.0	6.5	4 x 1	24	0.47
500	AH500M	33.0	6.5	4 x 1	24	0.47

Speeds—ft/min at 90 psi:

Capacity (lbs)	Product Code	Up		Down	
		Full Load	No Load	Full Load	No Load
250	AH250M	41 (32)	54 (47)	47 (44)	42 (37)
500	AH500M	29 (18)	54 (47)	53 (50)	42 (37)

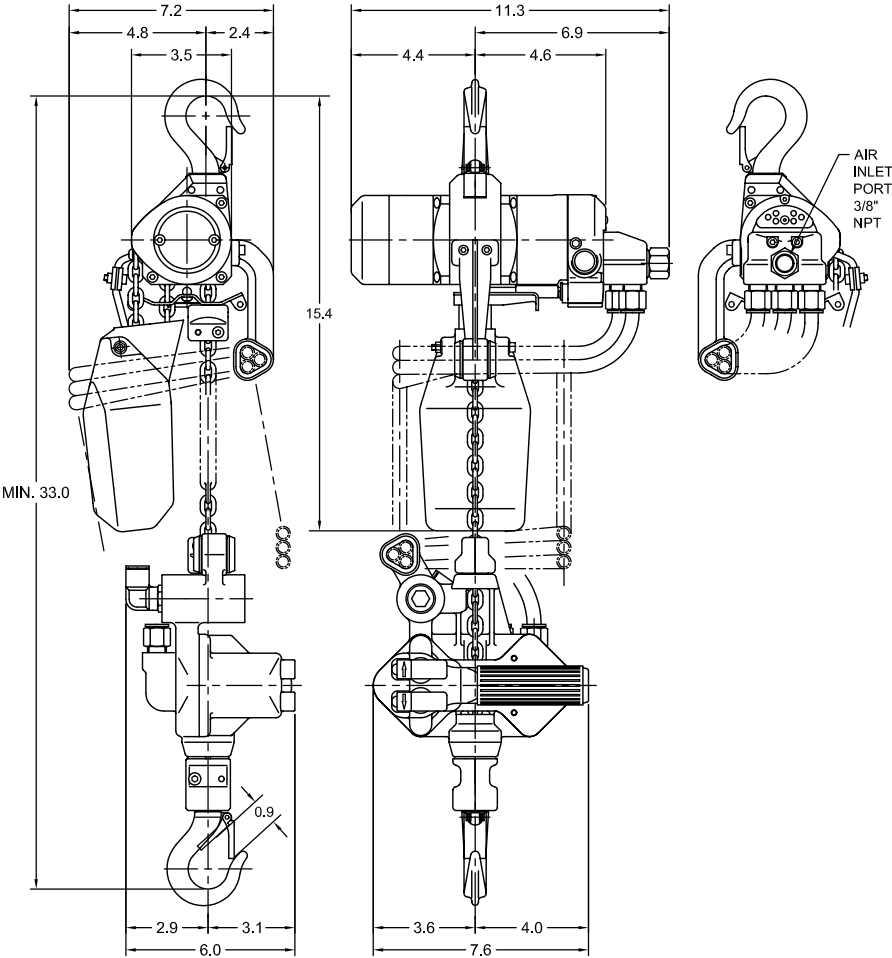
Air Consumption—cfm at 90 psi:

Capacity (lbs)	Product Code	Up		Down	
		Full Load	No Load	Full Load	No Load
250	AH250M	28 (21)	31 (24)	27 (21)	26 (20)
500	AH500M	26 (19)	31 (24)	28 (22)	26 (20)

Values in parentheses for air supply at 60 psi.

MANIPULATOR MODEL—DIMENSIONS

Measurements in inches



AH500M

AH Mini-Cat Air Powered Hoists with Lug Suspension

MINI TROLLEY—SPECIFICATIONS

Maximum Capacity (lbs)	Product Code	Adjustable Beam Width B (in)	Minimum* Radius for Curve (in)	Net Weight (lbs)	Approximate Shipping Weight (lbs)
525	ET525	1.97 – 3.94	23.6	4.0	5.0

Lug mount only.

*For larger flanges, hook mount AH air hoists to PTF2/GTF2 1/2 or 1 Ton trolleys.

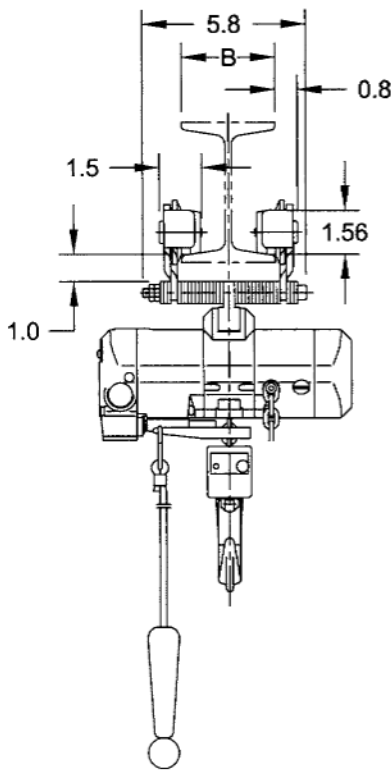


ET525

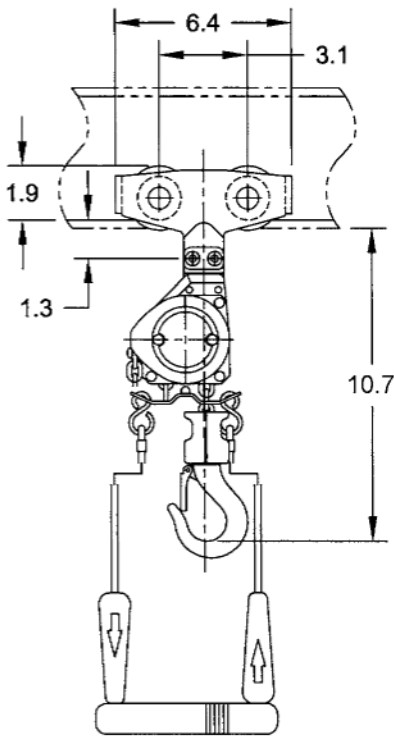
MINI TROLLEY—DIMENSIONS

Measurements in inches

Dimensions for pendant and cord controls are identical.



AH500C



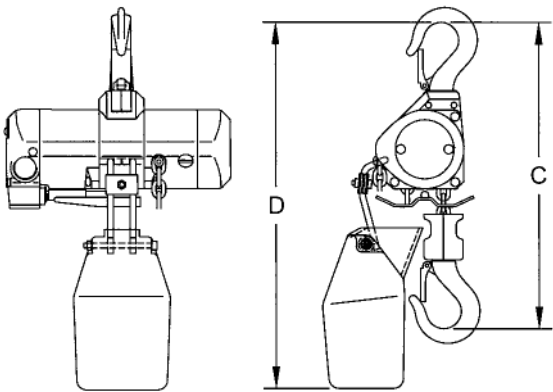
AH500C

AH Mini-Cat Air Powered Hoists with Options

HOISTS WITH PLASTIC CHAIN CONTAINERS—DIMENSIONS

Hoist Product Code	Max. Lift (ft)	Container Headroom D (in)	Hoist Headroom C (in)
AH250C/P	10	14.7	12.0
AH500C/P	20	16.1	

Chain containers are easily installed.

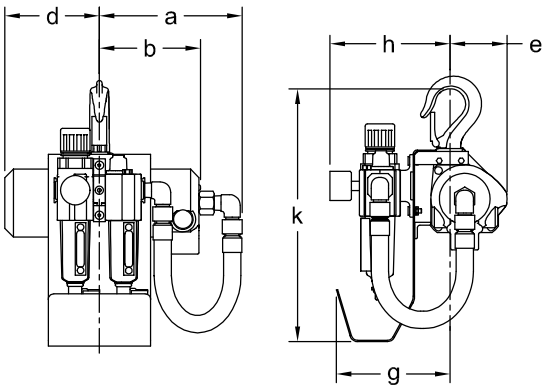


AH with Chain Container

HOISTS WITH L, FL AND FRL—DIMENSIONS

Cap. (lbs)	Product Code	a (in)		b (in)	d (in)	e (in)	g (in)	h (in)		k (in)
		C	P & M					L & FL	FRL	
250	AH250C/P/M	6.6	8.2	4.7	4.4	2.6	5.3	4.2	5.5	11.7
500	AH500C/P/M	6.6	8.2	4.7	4.4	2.6	5.3	4.2	5.5	11.7

L = Lubricator
FL = Filter and Lubricator
FRL = Filter, Regulator and Lubricator



AH with L, FL and FRL

Technical Data

TCR TOP AND BOTTOM HOOK—DIMENSIONS

Product Code	a (in)	b (in)	c (in)	d (in)	e (in)	f (in)	g (in)	h (in)
TCR250C/P	1.4	0.9	1.1	0.9	1.6	1.6	1.1	4.2
TCR500C/P	1.4	0.9	1.1	0.9	1.6	1.6	1.1	4.2
TCR1000C2/P2	1.4	0.9	1.1	0.9	1.6	1.6	1.1	4.2
TCR1000C/P	1.4	0.9	1.1	0.9	1.6	1.6	1.1	4.2
TCR2000C2/P2	1.8	1.2	1.5	1.2	1.8	2.0	1.1	4.9
TCR10000C2/P2	2.8	2.4	2.4	2.2	2.4	2.6	1.6	7.1
TCR25000C2/P2	4.9	3.5	3.9	3.5	4.9	4.9	3.1	13.1

TCK TOP AND BOTTOM HOOK—DIMENSIONS

Product Code	a (in)	b (in)	c (in)	d (in)	e (in)	f (in)	g (in)	h (in)
TCK3000C/P	2.1	1.5	1.8	1.3	2.0	2.4	1.3	5.9
TCK6000C2/P2	2.3	1.6	1.9	1.6	2.6	2.8	1.7	6.8

TCS TOP AND BOTTOM HOOK—DIMENSIONS

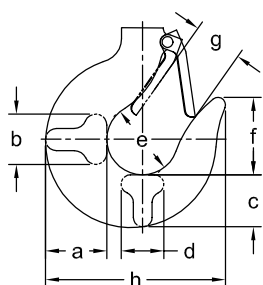
Product Code	a (in)	b (in)	c (in)	d (in)	e (in)	f (in)	g (in)	h (in)
TCS250C/P	0.6	0.8	0.6	0.8	1.4	1.3	1.0	2.9
TCS500C/P	0.6	0.8	0.6	0.8	1.4	1.3	1.0	2.9
TCS1000C2/P2	1.4	0.9	1.1	0.9	1.6	1.6	1.1	4.2

TCL TOP AND BOTTOM HOOK—DIMENSIONS

Product Code	a (in)	b (in)	c (in)	d (in)	e (in)	f (in)	g (in)	h (in)
TCL250C/P	0.6	0.8	0.6	0.8	1.4	1.3	1.0	2.9
TCL500C/P	0.6	0.8	0.6	0.8	1.4	1.3	1.0	2.9
TCL1000C2/P2	1.4	0.9	1.1	0.9	1.6	1.6	1.1	4.2
TCL3000C/P	2.1	1.5	1.8	1.3	2.0	2.4	1.3	5.9
TCL6000C2/P2	2.3	1.6	1.9	1.6	2.6	2.8	1.7	6.8

AH TOP AND BOTTOM HOOK—DIMENSIONS

Product Code	a (in)	b (in)	c (in)	d (in)	e (in)	f (in)	g (in)	h (in)
AH250C/P/M	0.7	0.8	0.6	0.8	1.4	1.3	0.9	2.9
AH500C/P/M	0.7	0.8	0.6	0.8	1.4	1.3	0.9	2.9



TCR CHAIN—DIMENSIONS

Product Code	a (in)	b (in)	d (in)	p (in)
TCR250C/P	0.31	0.87	0.25	0.75
TCR500C/P				
TCR1000C2/P2				
TCR1000C/P	0.35	0.98	0.28	0.83
TCR2000C2/P2				
TCR10000C2/P2	0.88	2.14	0.63	1.77
TCR25000C2/P2	1.22	2.95	0.87	2.60

TCK CHAIN—DIMENSIONS

Product Code	a (in)	b (in)	d (in)	p (in)
TCK3000C/P	0.62	1.73	0.49	1.50
TCK3000C2/P2				

TCS CHAIN—DIMENSIONS

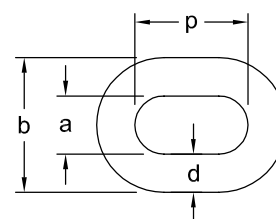
Product Code	a (in)	b (in)	d (in)	p (in)
TCS250C/P	0.31	0.87	0.25	0.75
TCS500C/P				
TCS1000C2/P2				

TCL CHAIN—DIMENSIONS

Product Code	a (in)	b (in)	d (in)	p (in)
TCL250C/P	0.31	0.87	0.25	0.75
TCL500C/P				
TCL1000C2/P2				
TCL3000C/P	0.62	1.73	0.49	1.50
TCL6000C2/P2				

AH CHAIN—DIMENSIONS

Product Code	a (in)	b (in)	d (in)	p (in)
AH250C/P/M	0.20	0.53	0.16	0.48
AH500C/P/M				



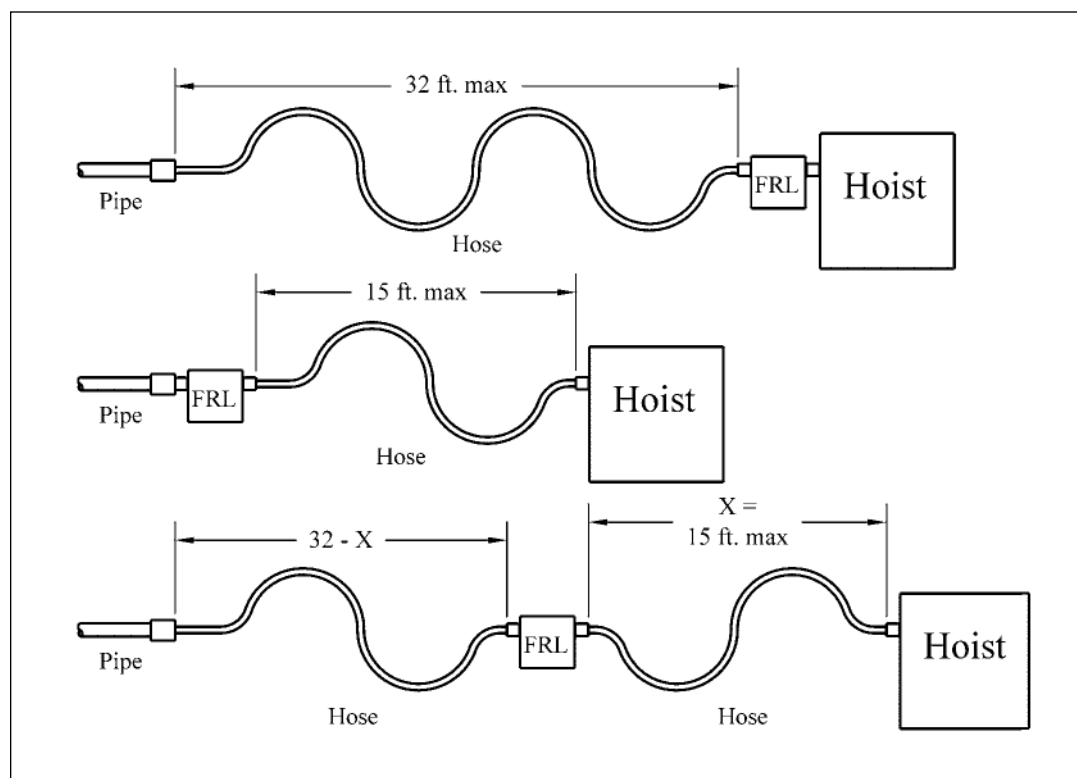
Technical Data

TYPICAL ARRANGEMENTS OF FRL AND AIR SUPPLY HOSE LENGTHS

The connection from the air supply system piping to the hoist must be made with a flexible pressure hose. Due to normal losses in air supply lines:

- Do not use hose smaller than specified.
- Limit the length of the hose to that specified below.

If your application exceeds these requirements, consult Customer Service.



FRL = Filter, Regulator and Lubricator

BULLARD® AND SHUR-LOC® HOOKS

These hooks offer a positive locking latch feature. Consult Customer Service for full details.



Bullard®

Shur-Loc®

Product Code

TCR SERIES

TCR 1000 P 2

Type:

TCR = TCR Hook Mount
 TCRM = TCR with Motorized Trolley
 TCRP = TCR with Push Trolley
 TCRG = TCR with Geared Trolley

Capacity Code:

250 = 1/4 Ton
 500 = 1/2 Ton
 1000 = 1 Ton
 2000 = 2 Ton
 10000 = 10 Ton
 25000 = 25 Ton

Pendant/Cord:

P = Pendant
 C = Cord

No. Falls:

2 = 2 Falls

TCK SERIES

TCK 6000 P 2

Type:

TCK = TCK Hook Mount
 TCKM = TCK with Motorized Trolley
 TCKP = TCK with Push Trolley
 TCKG = TCK with Geared Trolley

Capacity Code:

3000 = 3 Ton
 6000 = 6 Ton

Pendant/Cord:

P = Pendant
 C = Cord

No. Falls:

2 = 2 Falls

TCS CHEETAH SERIES

TCS 1000 P 2

Type:

TCS = TCS Hook Mount
 TCSP = TCS with Push Trolley

Capacity Code:

250 = 1/4 Ton
 500 = 1/2 Ton
 1000 = 1 Ton

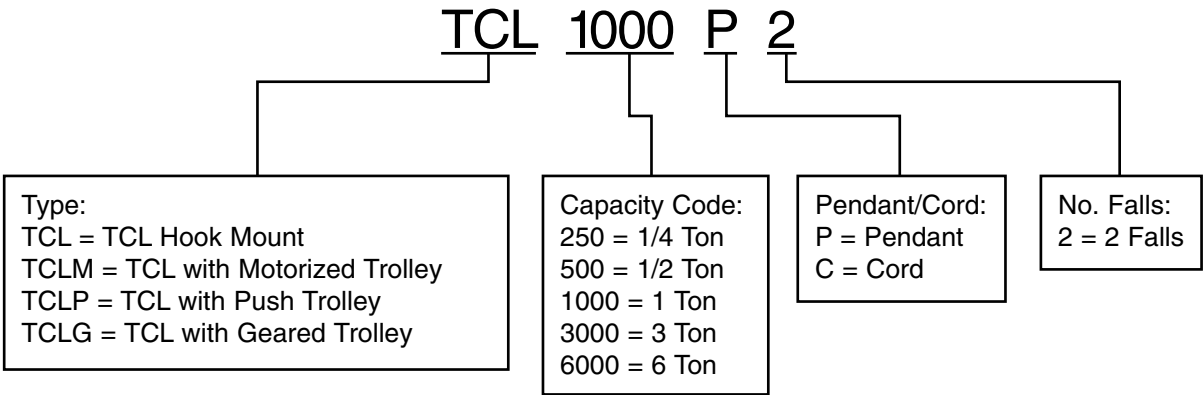
Pendant/Cord:

P = Pendant
 C = Cord

No. Falls:

2 = 2 Falls

TCL LUBE FREE SERIES



AH MINI-CAT SERIES

