



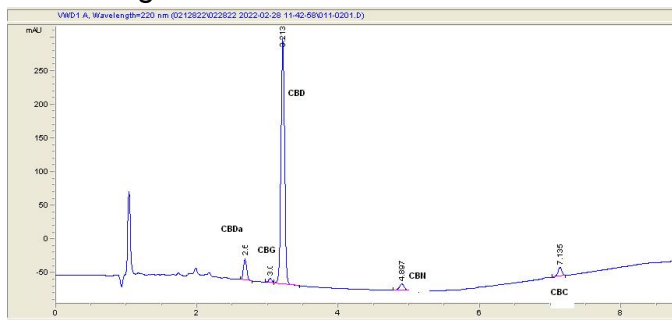
Custom Capsule  
Consultants

Sample 186-022822-281  
30mg Full Spectrum CBD Vegan Softgel  
Batch/Lot # B2522A0224VSFS  
Sample Submitted: 02-28-2022; Report Date: 02-28-2022  
Sample Density: 940 mg/ml; Sample Unit Size: 0.60 g

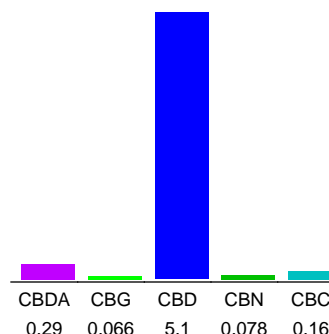
30mg Full Spectrum CBD Vegan Softgel  
Edible: Oil

Batch/Lot # B2522A0224VSFS

## Chromatogram



## Cannabinoid Profile



## Cannabinoid Profile by HPLC

**0.00%**  
Calculated THC Yield

**5.35%**  
Calculated CBD Yield

**5.69%**  
Total Cannabinoids

Cannabinoid	% wt	mg/ml	mg/unit
CBDA	0.29	2.726	1.74
CBG	0.066	0.6204	0.396
CBD	5.1	47.94	30.6
CBN	0.078	0.7332	0.468
CBC	0.16	1.504	0.96
<b>Total Cannabinoids</b>	<b>5.69</b>	<b>53.5</b>	<b>34.2</b>
<b>Calculated THC Yield</b>	<b>0.00</b>	<b>0.00</b>	<b>0.00</b>
<b>Calculated CBD Yield</b>	<b>5.35</b>	<b>50.33</b>	<b>32.13</b>

Calculated Maximum THC Yield =  $\text{THC} + 0.877 * \text{THCA}$   
Calculated Maximum CBD Yield =  $\text{CBD} + 0.877 * \text{CBDA}$

**Marin Analytics, LLC**  
250 Bel Marin Keys Blvd, Suite D4  
Novato, CA 94949

415-936-6477 / sarabiancalana1@gmail.com

**Sara Biancalana**  
Chief Scientist

This sample has been tested by Marin Analytics, LLC using valid testing methodologies and a quality system. Values reported relate only to the sample tested. Marin Analytics, LLC makes no claims as to the efficacy, safety or other risks associated with any detected or non-detected levels of any compounds reported herein. This Certificate shall not be reproduced except in full, without the written approval of Marin Analytics, LLC.