

**Fox ESS EV Charger
User Manual**



FOXESS CO.,LTD

Copyright © FOXESS CO., LTD. 2022. All rights reserved.

No part of this document may be reproduced or transmitted in any form or by any means without prior written consent of FOXESS CO.,LTD.

Trademarks and Permissions



and other Fox trademarks are trademarks of FOXESS CO.,LTD.

All other trademarks and trade names mentioned in this document are the property of their respective holders.

Notice

The purchased products, services and features are stipulated by the contract made between Fox and the customer. All or part of the products, services and features described in this document may not be within the purchase scope or the usage scope. Unless otherwise specified in the contract, all statements, information, and recommendations in this document are provided "AS IS" without warranties, guarantees or representations of any kind, either express or implied.

The information in this document is subject to change without notice. Every effort has been made in this preparation of this document to ensure accuracy of the contents, but all statements, information, and recommendations in this document do not constitute a warranty of any kind, express or implied.

FOXESS CO., LTD.

Address: No.939, Jinhai Third Road, New Airport Industry Area, Longwan District,
Wenzhou, Zhejiang, China

Website: WWW.FOX-ESS.COM

Contents

1. Download and Install the APP	1
2. Account Register	1
3. Log in	3
4. EV Charger Binding and Network Configuration	4
5. EV Charger Function Setting	7
5.1 Charging Mode Setting	7
5.2 Appointment Charging Setting	7
5.3 Charging Current Setting	8
5.4 Load Balance Setting	8
5.5 Photovoltaic Linkage Setting	9
5.6 Station-Level Load Balance Setting	9
6. Other Settings	11
6.1 Add to Whitelist	11
6.2 Fault	11
6.3 Upgrade	12
6.4 About	12
7. Records	13
8. Personal Center	14

1 Download and Install the APP

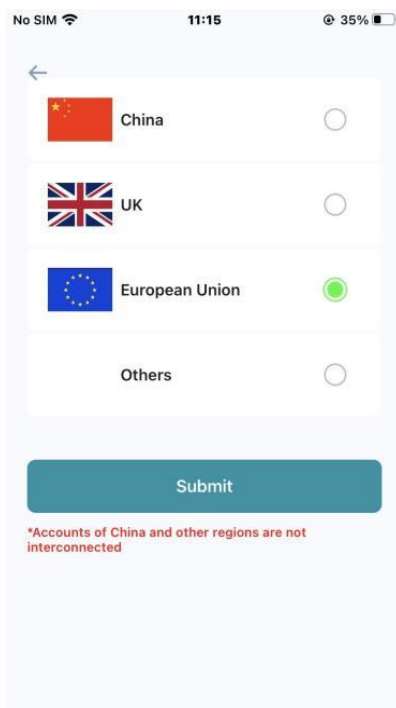
You can download and install the APP by scanning the QR Code or searching for "FoxSwitch" in the App Store and Google Play.



2 Account Register

When using the FoxSwitch APP, account register is required.

- Open the APP, select a country or region. Please select your country or region.

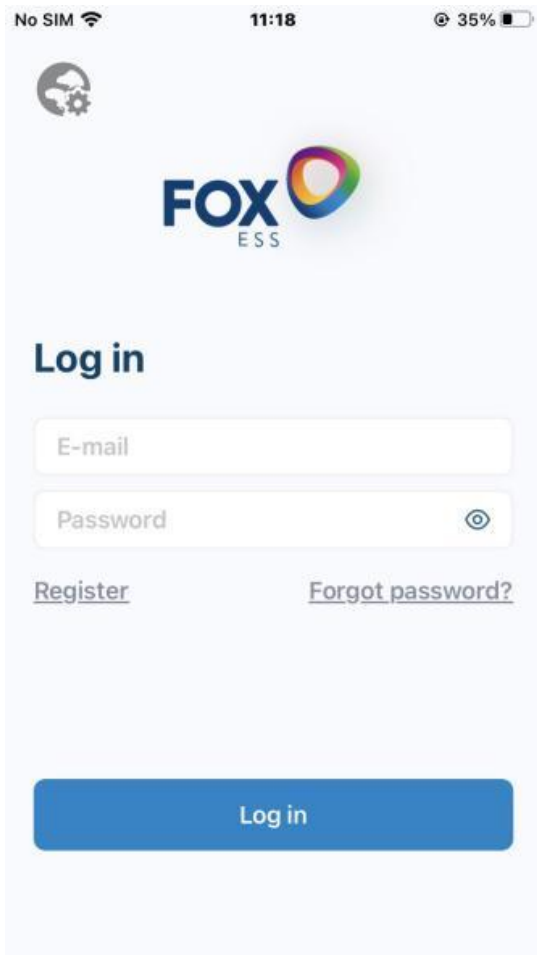


- Fill in Account Register Information

The screenshot shows a mobile application interface for registering an account. At the top, the status bar displays "No SIM", the time "11:17", and "35%" battery. Below the status bar is a navigation bar with a back arrow and the title "Register". The main content area features the FOX ESS logo at the top. Below the logo is the heading "Register". The form consists of several input fields: "E-mail", "Verification Code", "Password", and "Confirm password". To the right of the "Verification Code" field is a blue button labeled "Verification Code". Below the input fields is a checkbox with the text "I have read and agreed to the terms and contents defined in the 'User Agreement'". At the bottom of the form is a large blue button labeled "Register".

Enter your E-mail and click Verification Code. Check the received verification code in your E-mail and fill it in the verification code input box. Enter your password and verify again, check and agree with the User Agreement, and then click Register.

3 Log in



- You shall log in for the first time with the registered account and password, and may log in with the account and password recorded in the phone when log in next time.
- If you have questions about the entered password, please click the icon on the right side of the password box to display or hide the password.
- If you have forgotten the account login password, please click the Forget password? option to reset the password.
- You can also click the Register button in this page to register a new account.

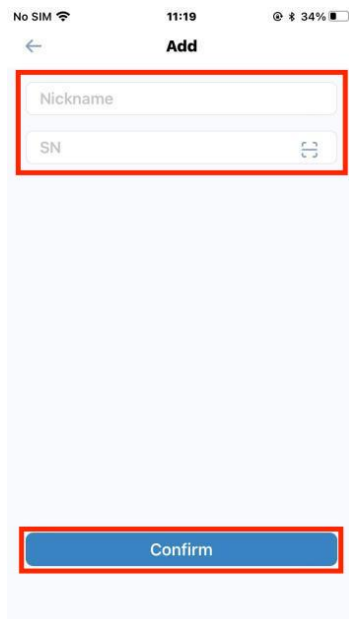
4 EV Charger Binding and Network Configuration

4.1. Add and Bind EV Charger

- Click the Add button in the Home of the APP

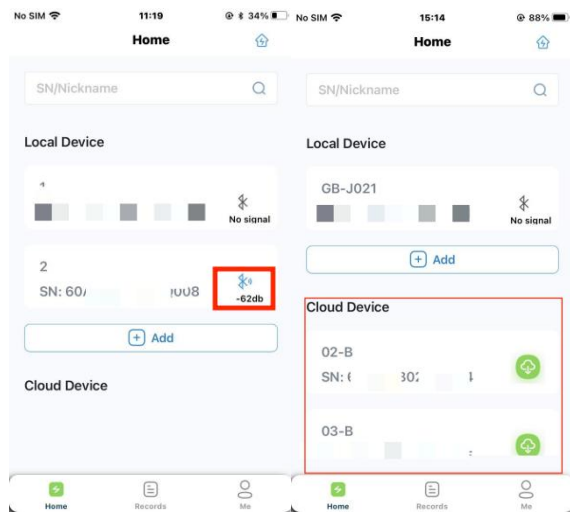


- You can scan the QR Code of the EV charger or manually enter the SN of the EV charger, enter the name of the EV charger, and click the Confirm button to add and bind the EV charger.



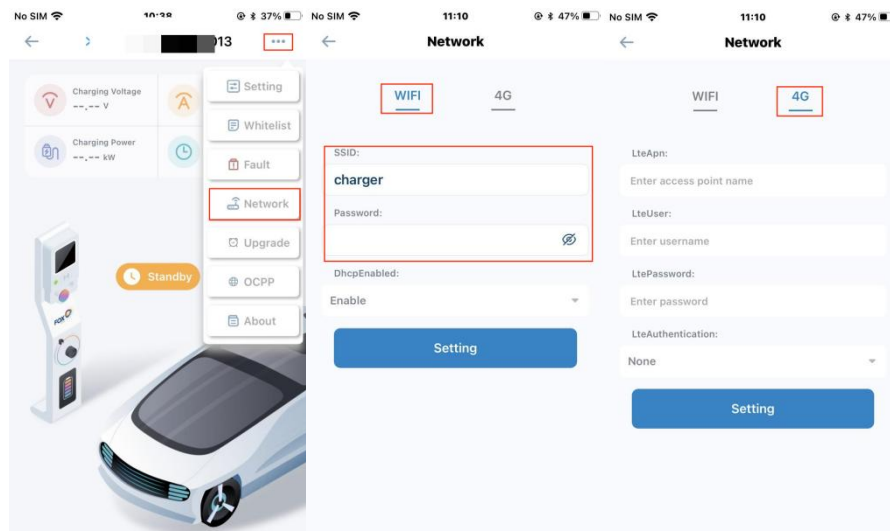
4.2. EV Charger Network and OCPP Configuration

- Click the Bluetooth icon of the bound EV charger to connect via Bluetooth, enter the EV Charger Control interface, and the connected EV charger will be displayed in the Cloud Device.



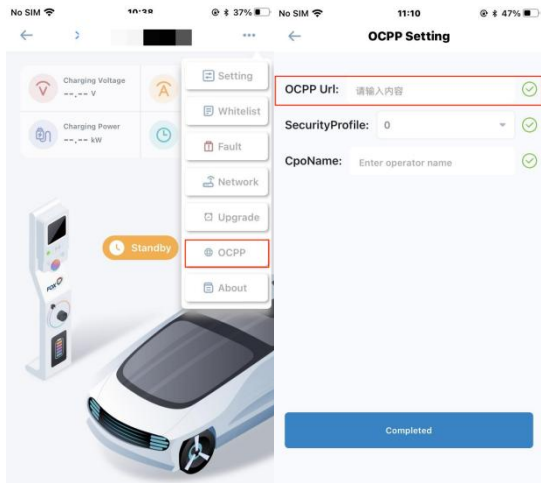
Note: To ensure the stability of Bluetooth connection, please connect to the EV charger 3 minutes after powering on the EV charger. In the Bluetooth mode, you may enter the EV Charger Control interface to set the EV charger.

- Click the Setting button in the upper right corner of the EV Charger Control interface, click the "Network" setting button, select the WIFI option, enter the WIFI name and password, and then click the Setting button to set it as WIFI network connection; If your EV charger is equipped with 4G hardware, please select the 4G option and click the Setting button to set it to 4G network connection.



Note: After network configuration, the EV charger shall be powered off and restarted. After restarting, you can connect to the network and enter the cloud within 3 minutes. In cloud mode, the interval for uploading the charging data from the EV charger to the APP is 1 minute. The 4G hardware is optional, please confirm if this function is available to your EV charger.

- If your EV charger is equipped with OCPP hardware, you can click the "OCPP" button in the EV charger control interface to enter the OCPP Setting interface. If you need to use the OCPP function, please ask the operator of the charging platform for the server URL address of the platform, enter the server URL address of the platform in the "OCPP URL" of the OCPP setting interface, and click "Completed" to complete OCPP configuration.

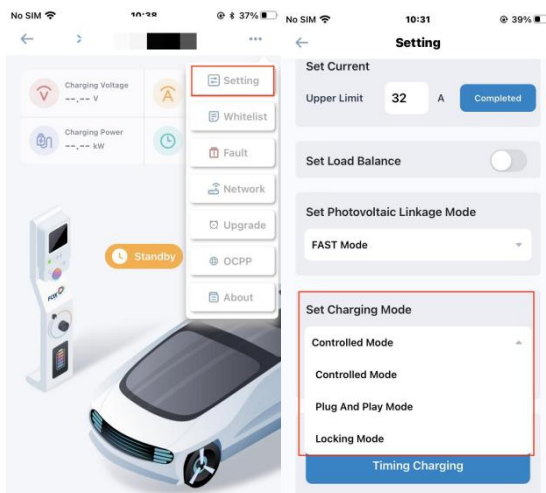


Note: OCPP is optional, please confirm if this function is available to your EV charger.

5 EV Charger Function Setting

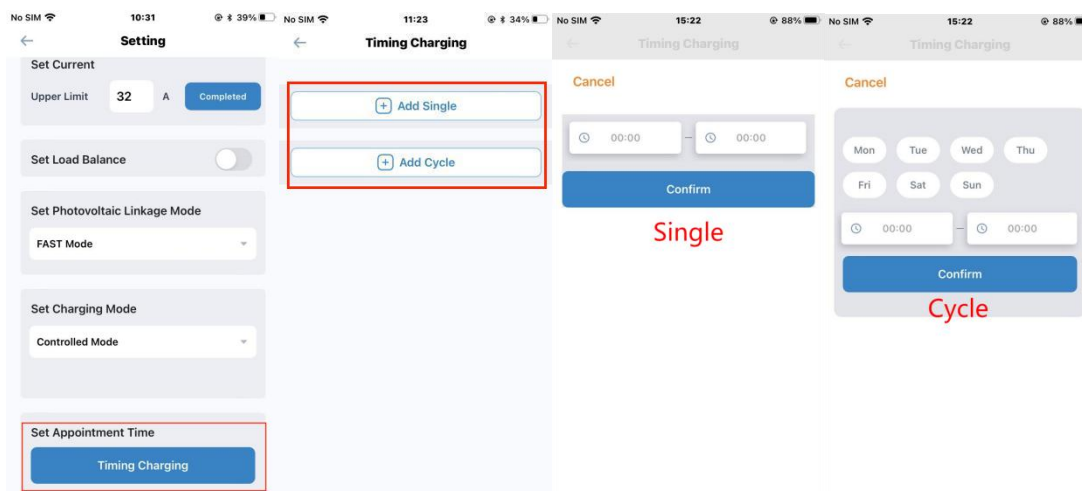
5.1. Charging Mode Setting

- Click the "Setting" button in the EV Charger Control interface to enter the EV Charger Setting interface. You can set the charging mode of the EV charger to "Plug and Play Mode", "Controlled Mode", and "Locking Mode".



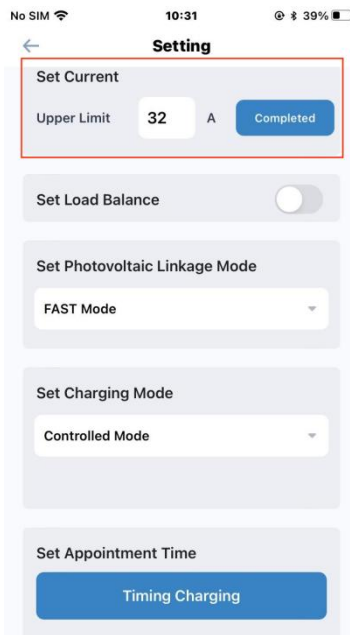
5.2. Appointment Charging Setting

- In the EV Charger Setting interface, you can set the Appointment Charging Time. You can choose "Single" or "Cycle", where "Single" means you can set the appointment charging time for the current day; Cycle means that you can set the appointment charging time for one week and set the appointment charging time for every day.



5.3. Charging Current Setting

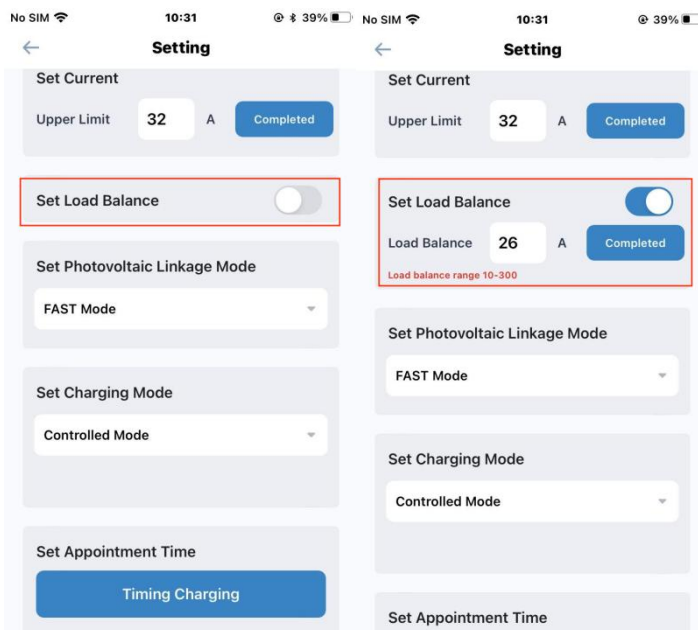
- In the EV Charger Setting interface, you can set the maximum charging current of the charging station.



Note: The current range that can be set is 10~32A

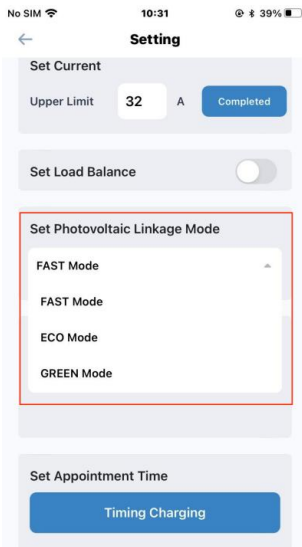
5.4. Load Balance Setting

- In the EV Charger Setting interface, you can turn on the load balance function switch and set the load balance current.



5.5. Photovoltaic Linkage Setting

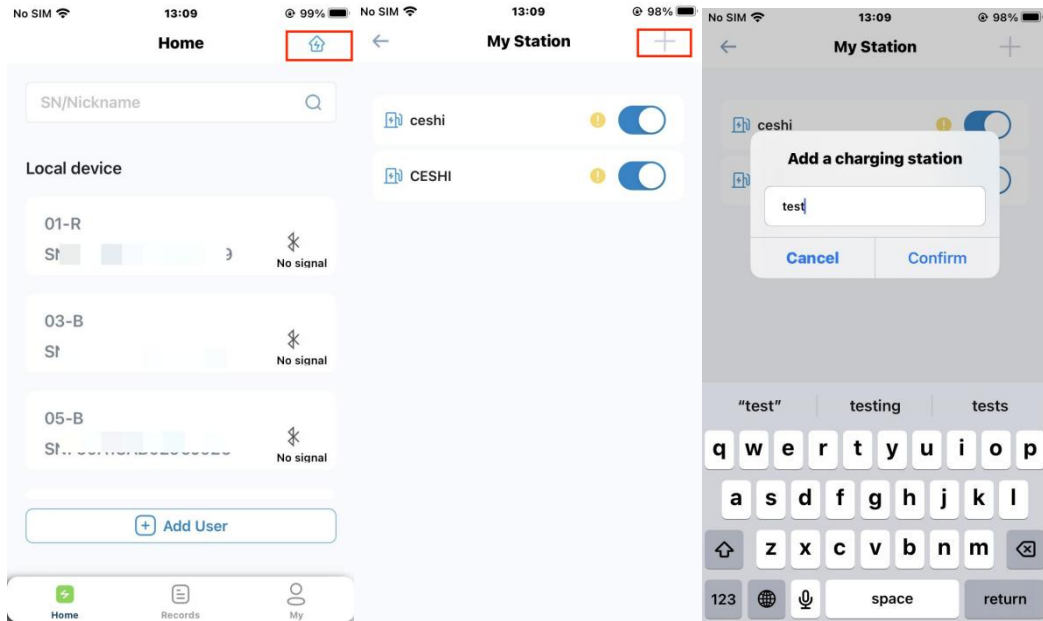
- In the EV charger Setting interface, you can set the photovoltaic linkage mode to "FAST Mode", "ECO Mode" and "GREEN Mode".



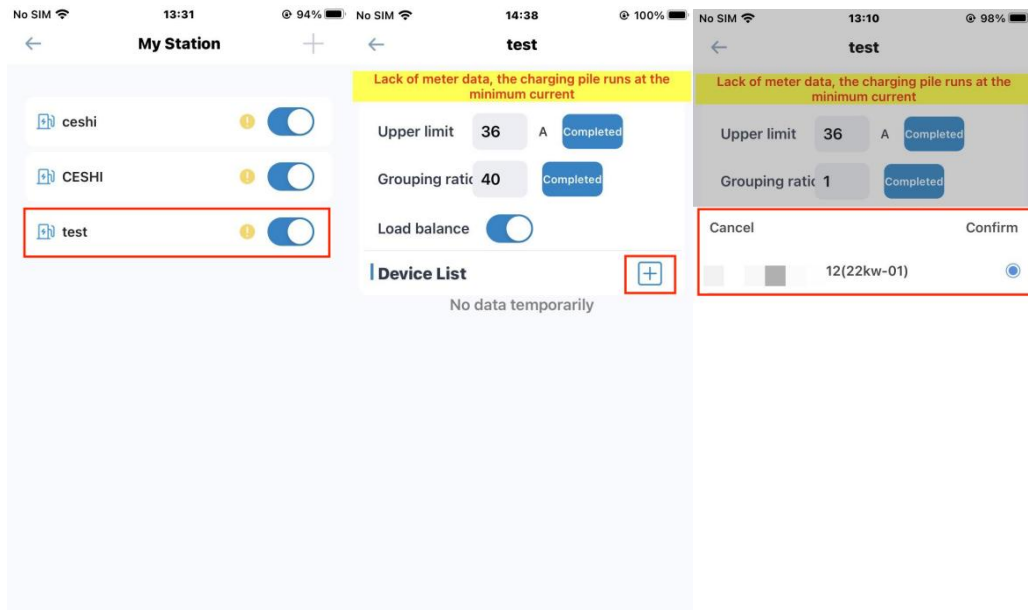
5.6. Station-Level Load Balance Setting

1. Establish a New Charging Station and Add EV Charger

- Click on the My Station icon in the upper right corner of the APP Home to enter the My Station interface. Click on the New Station icon in the upper right corner, enter the name of the station, and confirm to establish the station.



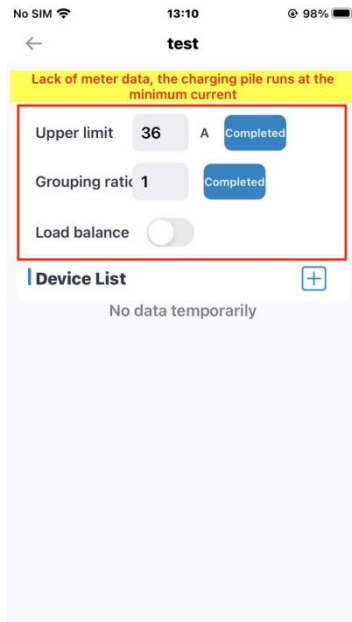
- Click on the established station to enter the Station Setting interface, click the Add icon on the right side of the Device List, select the charging station SN that needs to be added to the station, and click Confirm to complete adding the charging station.



Note: The charging station must be connected to the network (WIFI/4G) and in online state before it is added in the station.

2. Station Load Balance Parameters Setting

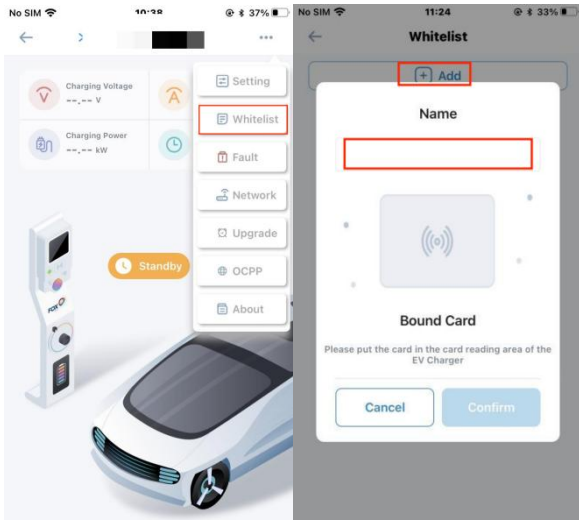
- In the Station Setting interface, you can set the load balance current and load balance switch of the station, and set the Grouping Ratio based on the electricity meter you are connected to.



6 Other Settings

6.1. Add to Whitelist

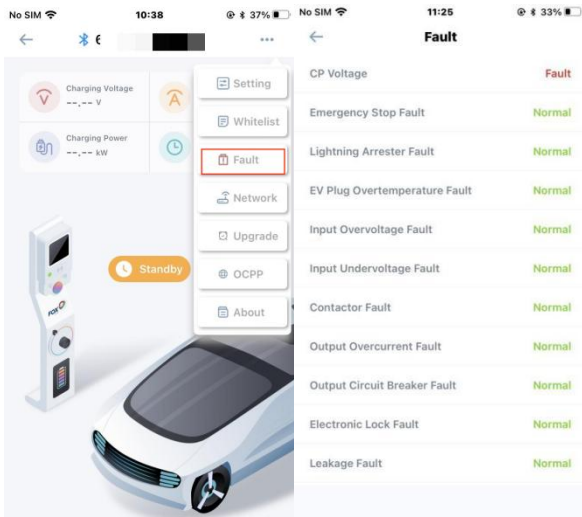
- Click the "Whitelist" button in the EV Charger Control interface to enter the Whitelist Management interface. Click the "Add" button, place the RFID card in the card reading area of the EV charger, and enter the card name to add it into the whitelist. The RFID card can be used to control the start and stop of the EV Charger.



Note: The EV charger is provided with two RFID cards, and at most 8 RFID cards can be added to one EV charger.

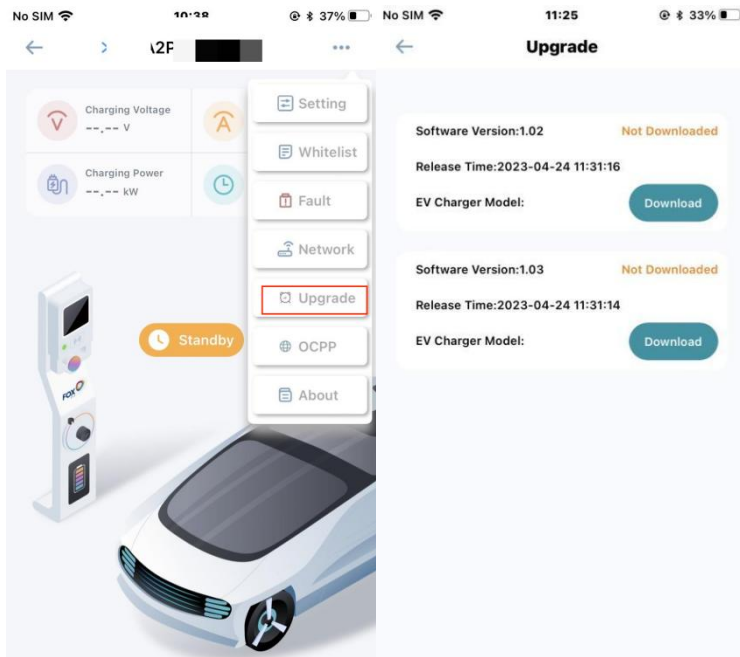
6.2. Fault

- Click the "Fault" button in the EV Charger Control interface to enter the Fault Alarm interface, where you can check the current fault information of the EV charger.



6.3. Upgrade

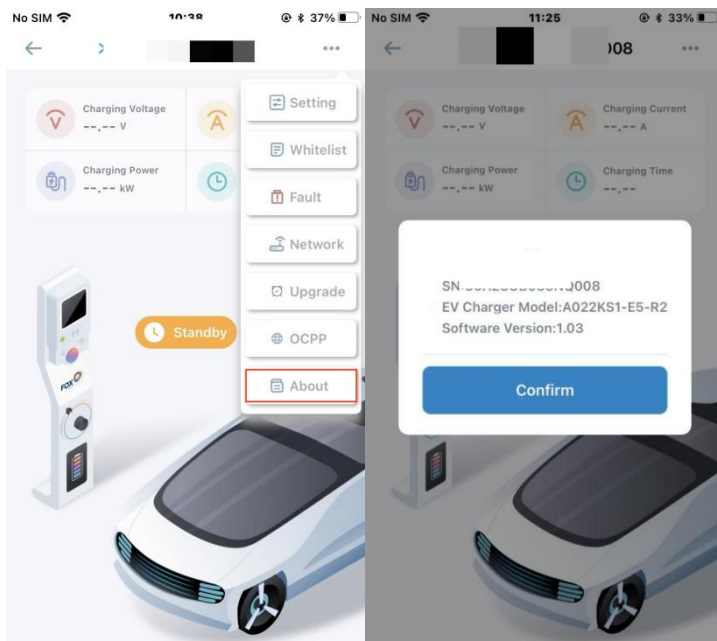
- Click the "Upgrade" button in the EV Charger Control interface to upgrade the firmware.



Note: Firmware upgrades can only be performed when the APP and EV charger are connected via Bluetooth.

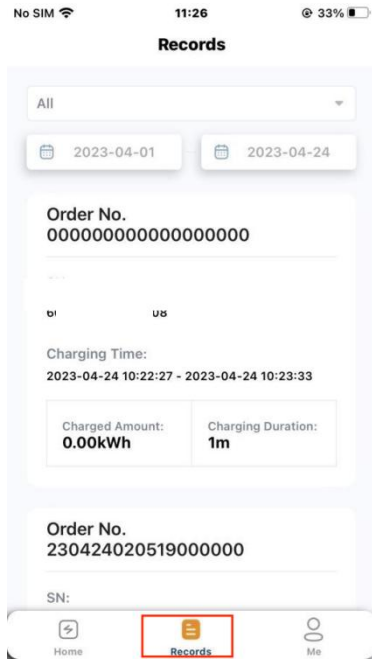
6.4. About

- Click the "About" button in the EV Charger Control interface to check information such as the Model, SN, and Firmware Version of the EV charger.



7 Records

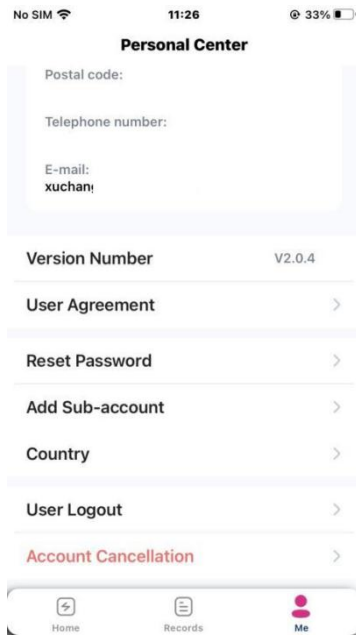
- In the Records interface, you can check the charging information of the EV charger under the current account, including Charging Time, Charged Amount, Charging Duration, etc.



8

Personal Center

- In the Personal Center interface, you can check the personal account information and APP Version Number, Reset Password etc.



- In the Personal Center interface, you can also add Sub-accounts, and the authorized Sub-accounts can also control the EV chargers under the account.

