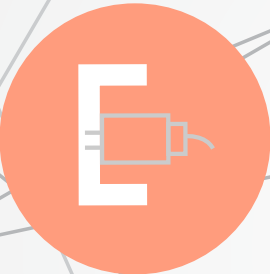
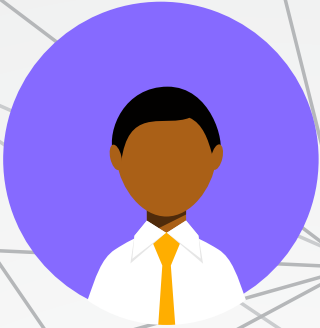
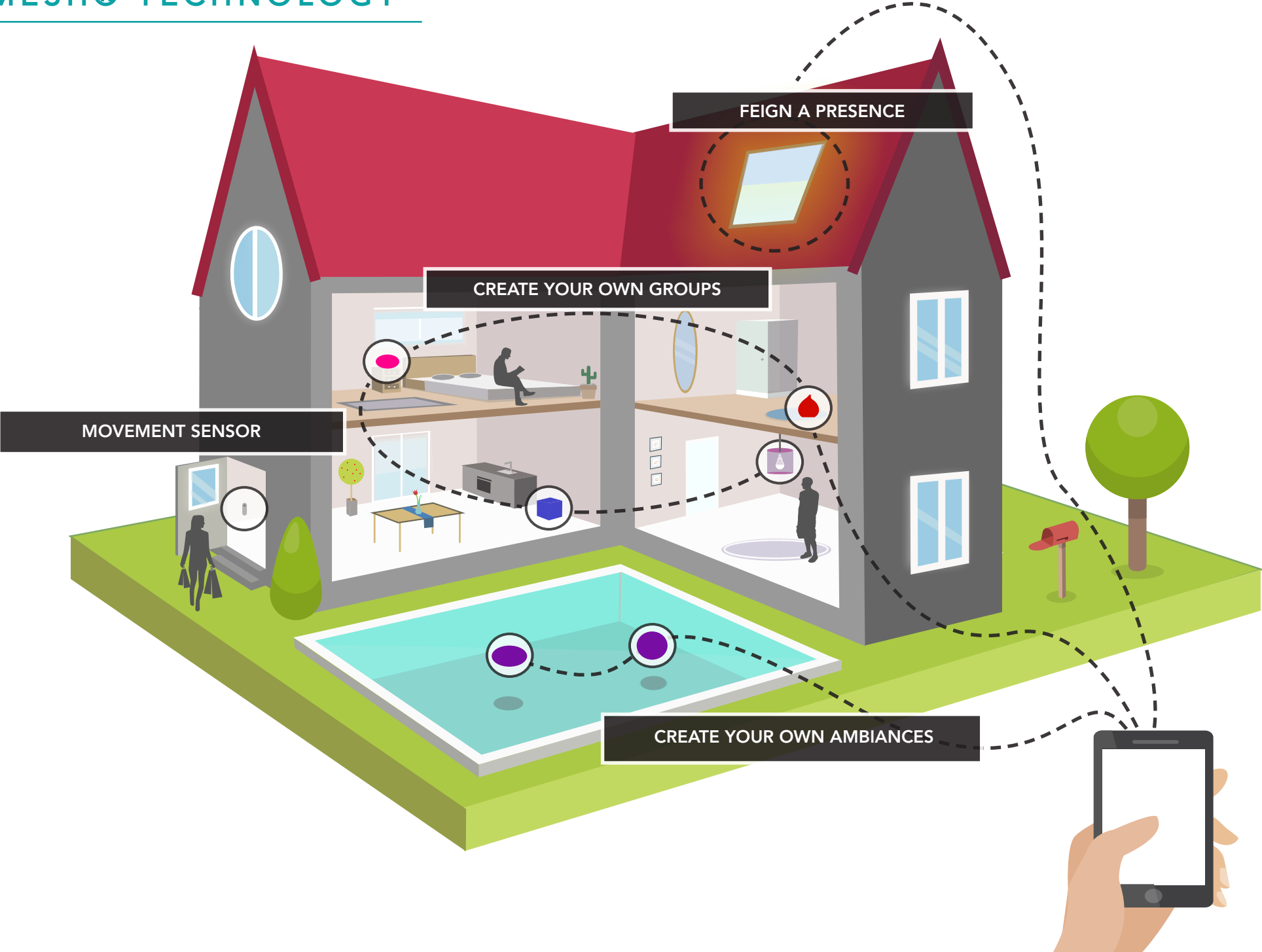




**BLUETOOTH
USER GUIDE**
MESH VERSION



MESH® TECHNOLOGY



Welcome to the Bluetooth Mesh® technology developed by SMART AND GREEN!

We are here to help you get you started in using your devices. You will find below all the tricks to use the tools at your disposal correctly.

This Mesh® technology is developed by CSR and operates on Bluetooth Smart (BLE) or Bluetooth 4. This is the Bluetooth used on most current Smartphones. For a more detailed list, see below.

In other words, the connected devices can communicate with each other either directly, if they are within range of one another, or via one or more nodes.

When people think of Bluetooth, usually it is music or control of the car that comes to mind. With this new protocol, whole new world opens up to us. Access to the Internet of Things (IoT) and connected homes is now available. Think of connected houses and beyond these there offices and open space. With the Mesh®, it is now possible to control an entire building without moving from your chair; the only limit is your imagination.

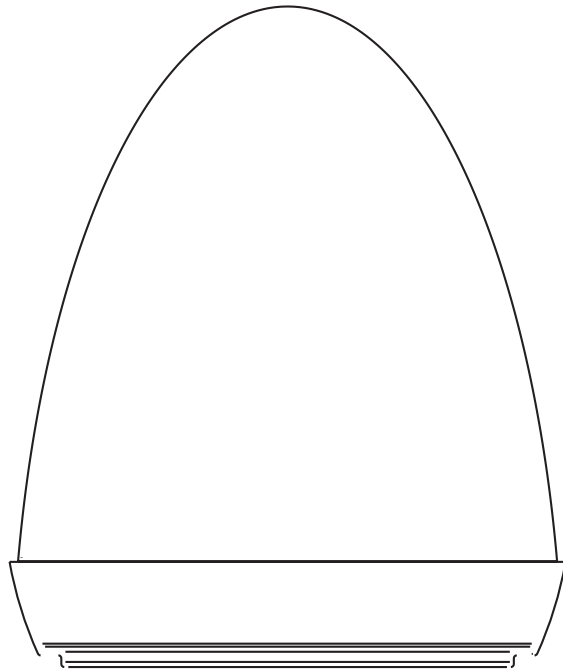
This Bluetooth Mesh® is not encumbered by the problems with the so-called star network. They had a limited number of targets and limited scope.

The network no longer has a centrepiece and there is no need for a router to manage the flow of information or repeaters; the devices run it directly. Each device in the system can relay information to its nearest neighbour. With this interconnectivity between lamps, as long as two objects are connected to the same network, they can communicate. The scope guaranteed by the Bluetooth is 10 m and may extend 20 m in an open field.

SMART AND GREEN LIGHTING SYSTEMS

BULB MESH

The first cordless bulb to inaugurate this concept, which has already evolved towards better optical qualities, high autonomy and unmatched reliability. Its charging station easily accommodates the bulb and its diffuser so that your lamp illuminates your interior while charging.



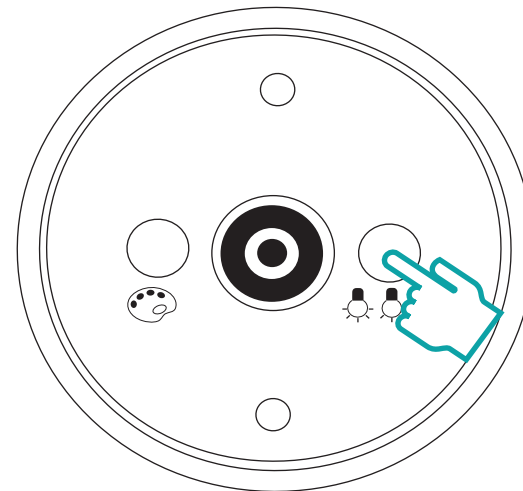
To begin using your BULB via the SmartMesh app, please go directly to page 10 of the user guide.

RESTARTING THE PRODUCT (RESET)

A procedure can be used to restart the products. If the user loses their smartphone or a device is not working properly for some reason despite a properly charged battery, simply follow the procedure below to restore the device to factory settings.

In addition, you will probably need to remove the product in question from the device list in your smartphone app. Please refer to the paragraph "Removing a device" in the section "Basic functions" on page 14.

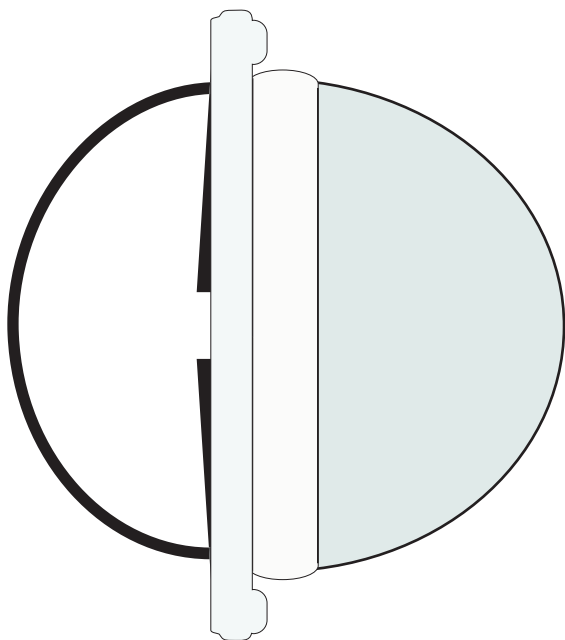
Once the process is complete, your device should flash according to the rotation of the next color: red, green, blue, white...



SMART AND GREEN LIGHTING SYSTEMS

BULBLITE MESH

This bulb benefits from the expertise of our engineering teams. Small and independent, it fits into numerous table or garden lamps. In addition, its unique mounting system allows you to suspend it while remaining water-tight.



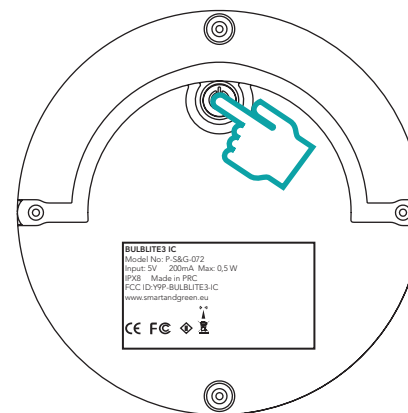
To begin using your BULBLITE via the SmartMesh app, please go directly to page 10 of the user guide.

RESTARTING THE PRODUCT (RESET)

There is a procedure for rebooting products. As with the BULB, if you encounter any problems with your BULBLITE, despite the battery being properly charged, please follow the procedure below to return the product to factory settings.

In addition, you will probably need to remove the product in question from the device list in your smartphone app. Please refer to the paragraph "Removing a device" in the section "Basic functions" on page 14.

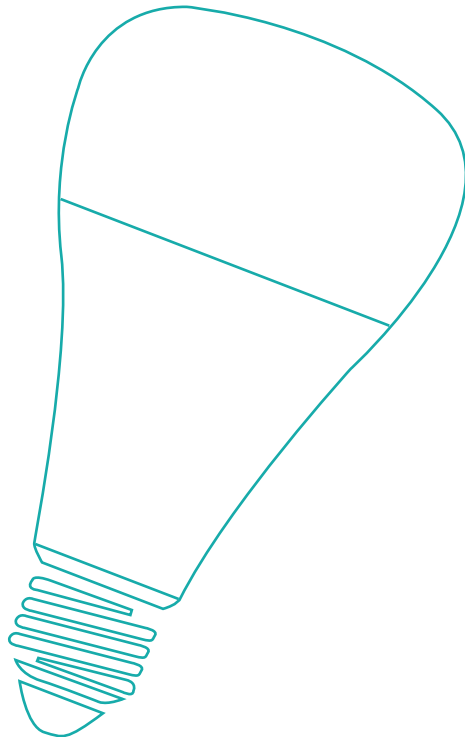
Once the process is complete, your device should flash according to the rotation of the next color: red, green, blue, white...



SMART AND GREEN LIGHTING SYSTEMS

E27 MESH

E27 is an energy saving connected bulb. You have complete control of the color and brightness of your bulb via the SmartMesh mobile app on your phone. In addition, you can create dynamic events to switch-on your E27 bulb at times to suit you.

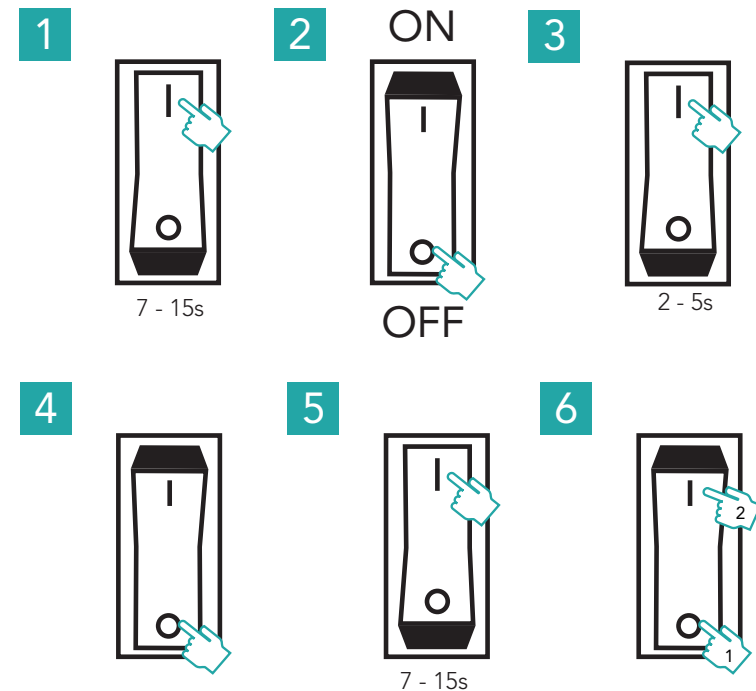


To configure your E27 bulb, please refer to the BULB MESH instructions starting on page 10 of the user guide. All possible functions are identical to other Smart and Green products.

RESTARTING THE PRODUCT (RESET)

As with all Smart and Green products, you can perform a factory reset to reboot your device. Since the E27 bulb has no buttons, the protocol is defined by following sequence of statuses:

- "Long" switch-on: between 7 and 15 seconds
- "Short" switch-on: between 2 and 5 seconds
- "Long" switch-on: between 7 and 15 seconds
- ON: reset

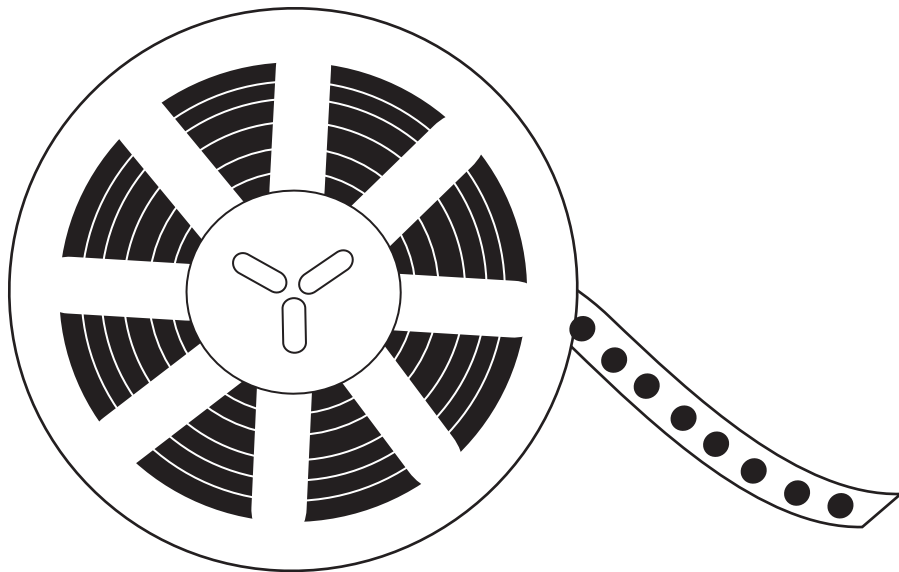


Once the procedure is complete, you should see the following color sequence: red, green, blue, white. This confirms that your device has successfully rebooted.

SMART AND GREEN LIGHTING SYSTEMS

STRIPIED MESH

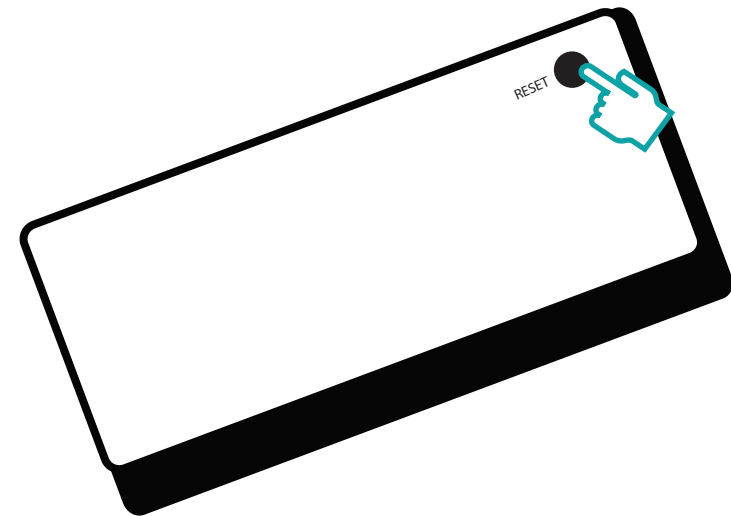
This is the latest SMART AND GREEN innovation. This indoor or outdoor light band associated with the control box, is now controlled remotely. Equipped with an adhesive kit, this bright band is fixed to the walls while remaining discrete.



To configure the STRIPIED strip light, please refer to the instructions for the BULB MESH starting on page 10 of the user guide. All possible functions are identical to other Smart and Green products.

RESTARTING THE PRODUCT (RESET)

As with all Smart and Green products, you can perform a factory reset to reboot your device. Tap and hold the “reset” button for 10 seconds to reboot the product.



Once the factory reset is complete, you can re-pair your product and begin using it again by following the instructions starting on page 12.

Attention

The factory reset does not properly remove the network sensor as the signal is lost. Only use this method as a last resort.





Version SmartMesh®

DOWNLOAD THE APP	10
FIRST CONNECTION	11
BASIC FEATURES	12
DEVICE MENU	12
DELETING A DEVICE	14
GROUPS MENU	15
MANAGING A GROUP	17
DELETING A GROUP	17

MOODS MENU	18
PROGRAMMING MENU	20
MANAGING AN EVENT	22
DELETING AN EVENT	23
ADDITIONAL FEATURES	24
FAVORITES MENU	24
MANAGING A DEVICE	24
OPTIONS MENU	26
ANDROID/IOS APP NOTIFICATIONS	27
USING ACCESSORIES	28
KEY MESH	28
SWITCH MESH	32

DOWNLOAD THE APP



COMPATIBLE WITH

iPhone 5 et +

iPad 3^e and 4^e gén., Air

iPad Mini and Mini Retina

iOS9 and +



ANDROID



COMPATIBLE WITH

Samsung Galaxy S6, S7, S8

Samsung Galaxy Note

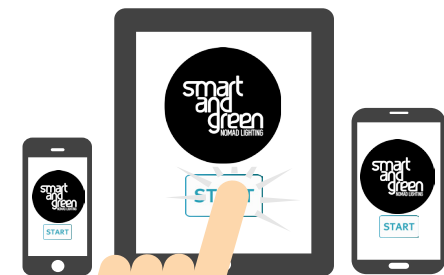
Google Nexus 4, 5, 6, 7

Android 5.0 and +



Update

SMART AND GREEN is a complete system of connected devices. The application updates to accept all the new available tools. All remarks to improve the ergonomics of the latter will also be taken into account in its development.



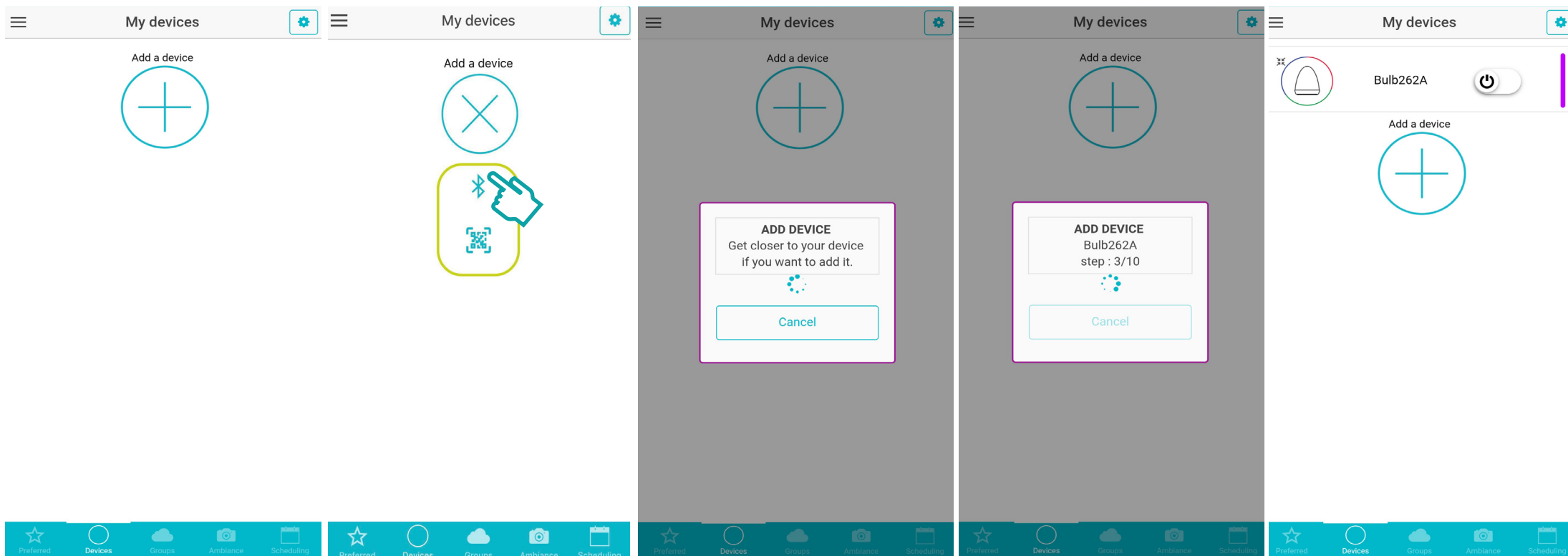
FIRST CONNECTION

When using the application for the first time, you will be redirected to the page allowing you to connect your phone or tablet to your Smart and Green Bluetooth devices.

In order to connect your first Bluetooth device and start building your Mesh® network simply press the function «pair a device» ensuring that your device is located close to the smartphone (1.5 m in general, but this distance also depends on the quality of your phone or tablet's Bluetooth transmitter). In general, the shorter the distance, the faster the pairing.

Once the button «pair an object» is selected, your Bluetooth device should briefly flash green and the pairing process displays on the screen of your smartphone or tablet. Once past these two steps you will see your device in the list located above the pairing button.

Then in order to build your Mesh® network you simply have to repeat the task for all your Smart & Green Bluetooth products.

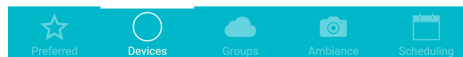
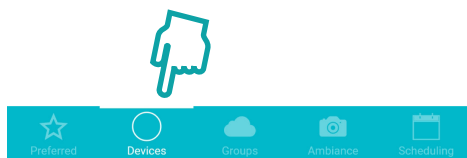
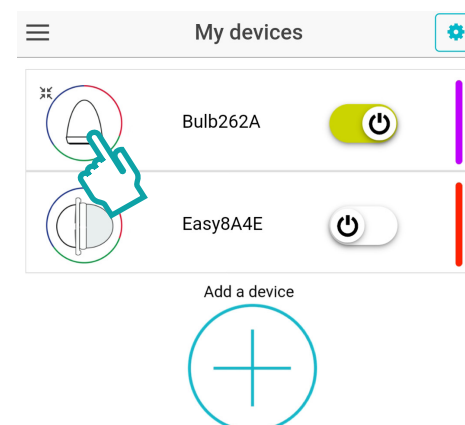
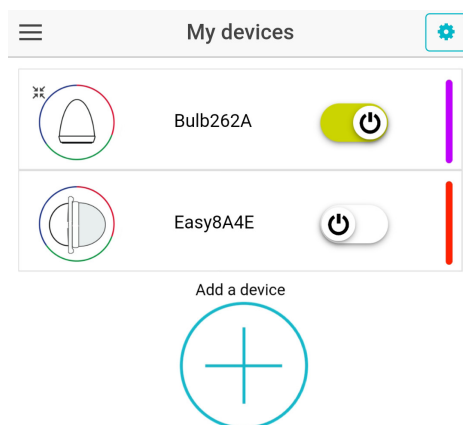
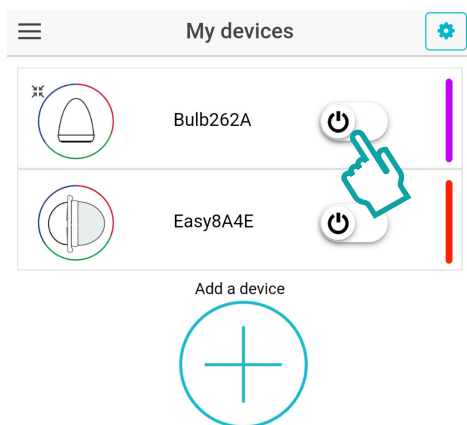


BASIC FEATURES

DEVICE MENU

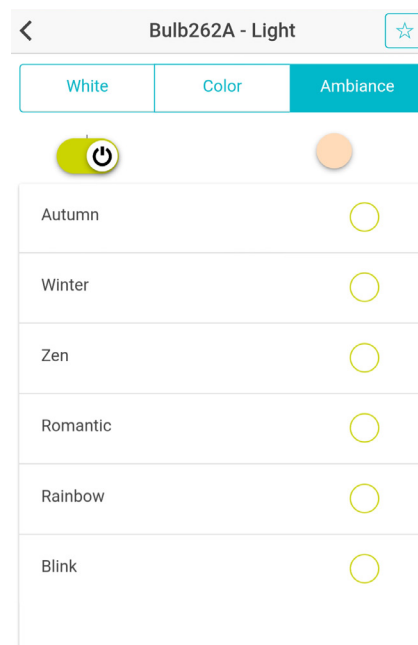
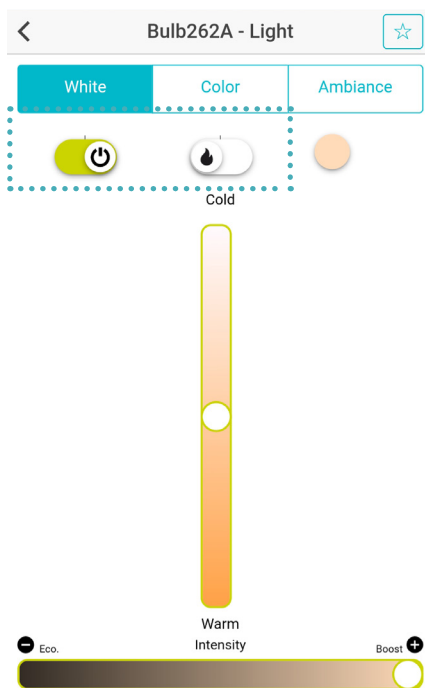
The «Device» menu enables individual control of all Bluetooth products previously added to your smartphone Mesh® network. By clicking and dragging the side selectors you can initially simply turn on or off a product to its original color.

You will then have access to advanced settings by pressing the tri-color circle icon. By default, this accesses the «color» tab, which enables the setting of predefined colors in the precision palette as well as the light brightness level.



BASIC FEATURES

In addition to the «Color» tab, the 'Mood' and 'White' tabs can adjust the shade of hot/cold white according to various predefined brightness levels or moods such as Zen, Romantic, Rainbow Sky etc.



Note

The zone opposite, located above the color palette allows you to turn off the device, switch to candle mode.

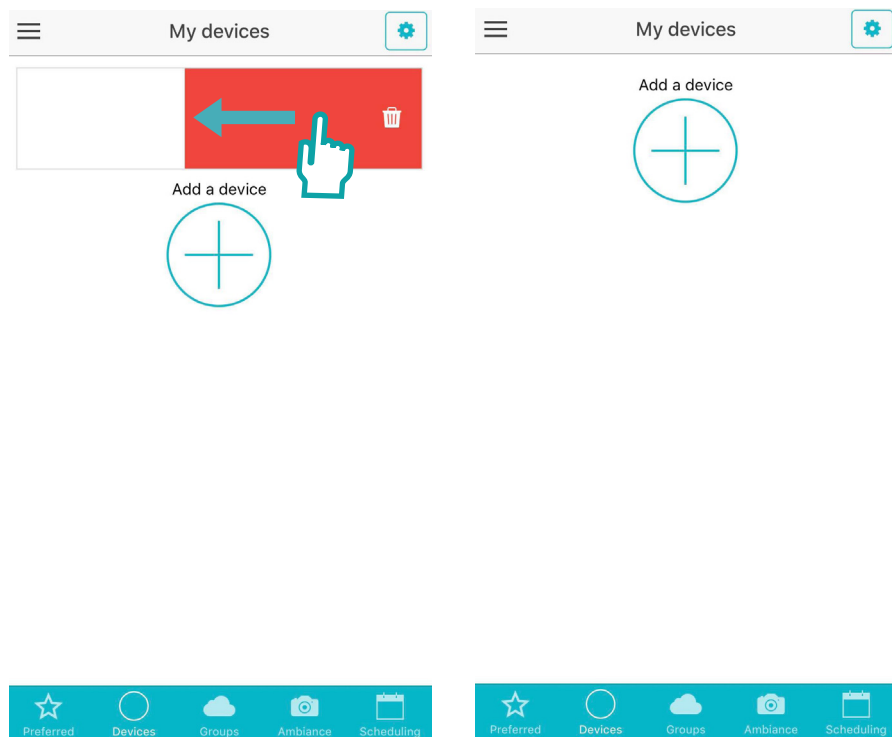


BASIC FEATURES

DELETING A DEVICE

In the "Devices" menu, drag the product that you want to unpair to the left. A red space should appear with a small icon. Tap it to remove your device.

Once a device has been removed from the Mesh® Bluetooth network, you should see it flash red briefly and a removed message should appear on your smartphone screen. The module should then disappear from your device list.



Note

To remove a device in the best possible condition it is important to ensure that it and your smartphone are currently connected to your Mesh® network, and therefore the device in question is now controlled via your smartphone application. If these conditions are met, the removal of your Bluetooth module from your Mesh® network should be carried out without any problem.

If necessary, you can remove a device when it is switched off or when your smartphone is not connected to your Mesh® network. This can be performed if your smartphone is not located sufficiently close to at least one of the devices in your Mesh® network, and even if the battery of the module you want to remove is completely dead.

In this case, the module removal procedure, initiated by tapping the red icon, will not complete. The app should indicate that your product cannot be found in or removed from the network but that you can tap a button to remove it locally. This removes the device from the list in your smartphone app.

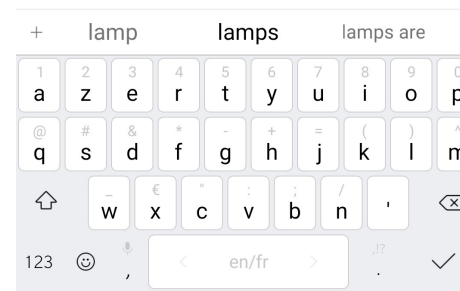
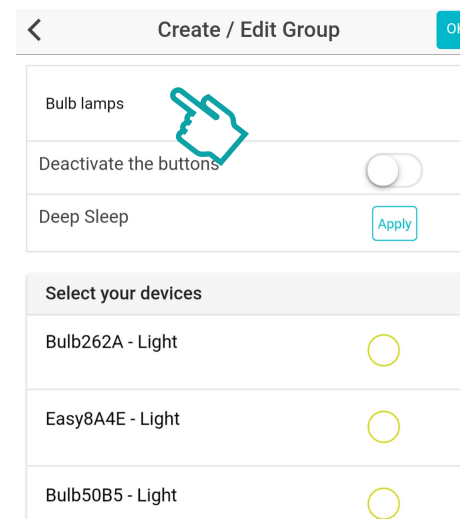
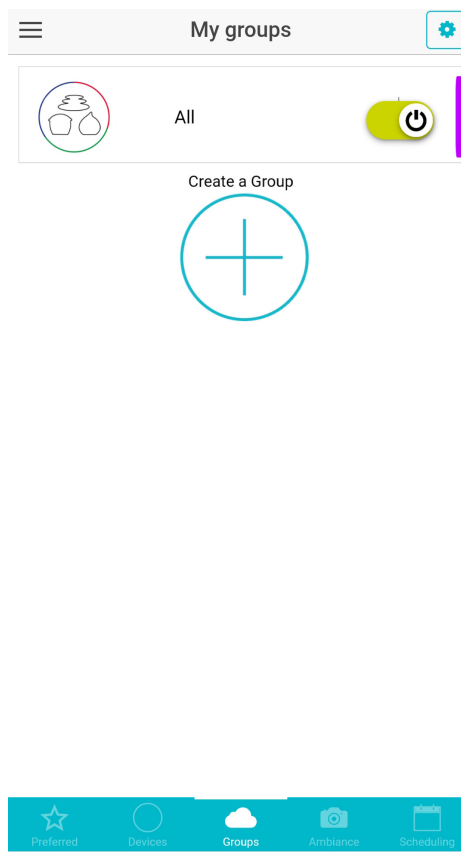
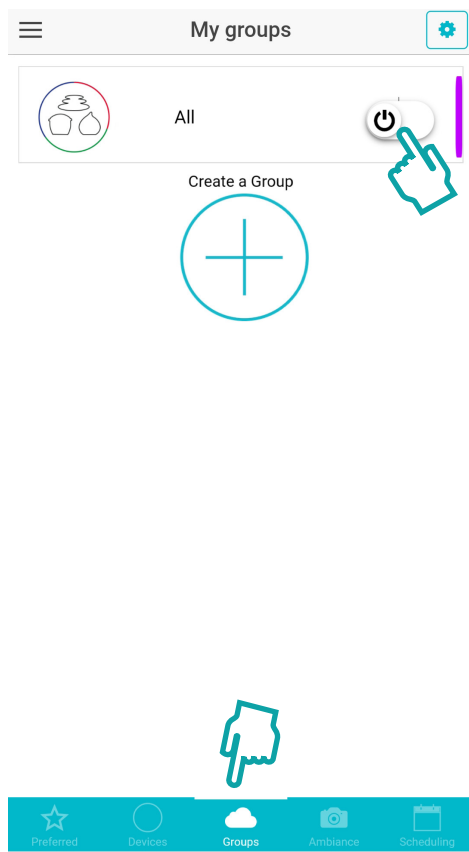
The device no longer appears in the list in your Smart and Green app, however the product itself remains locked, with only the old connection information stored. Therefore, you cannot reconnect the product in its current status. Before you can add it to your Mesh® network again via your Smart and Green App, you must reboot the device as described above in the user guide.

BASIC FEATURES

GROUPS MENU

The menu «Groups» enables product control as a group. The list has a default group «All», enabling the management of all Bluetooth products added to the Mesh® network via the user's smartphone. In the same manner as for a single product, it is possible to access a precise setting of the group's color or mood by clicking on the tricolor circle icon.

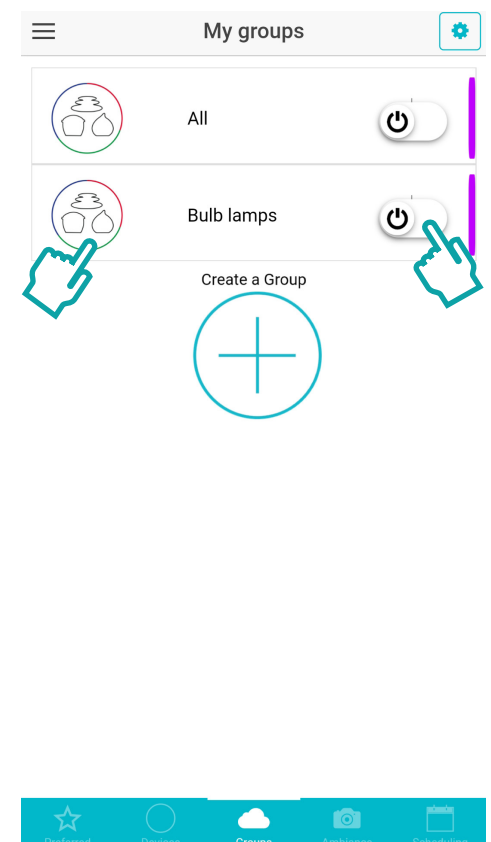
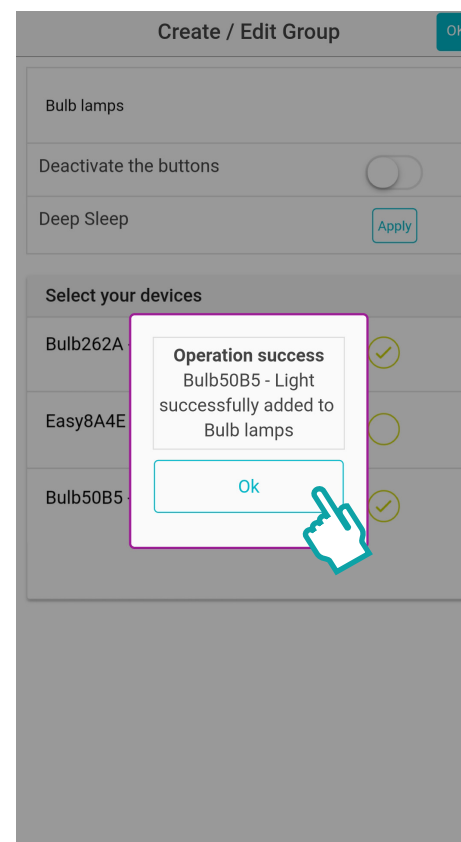
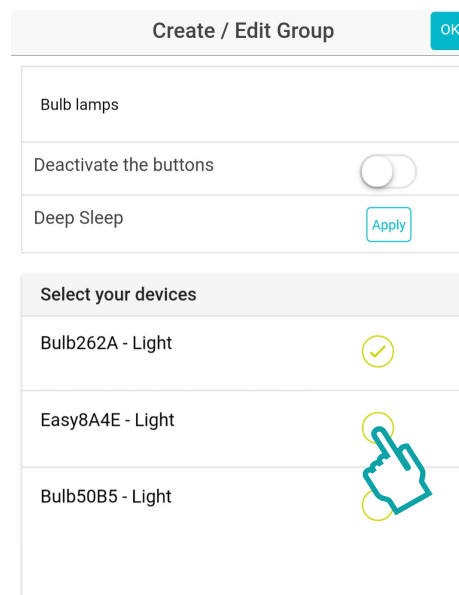
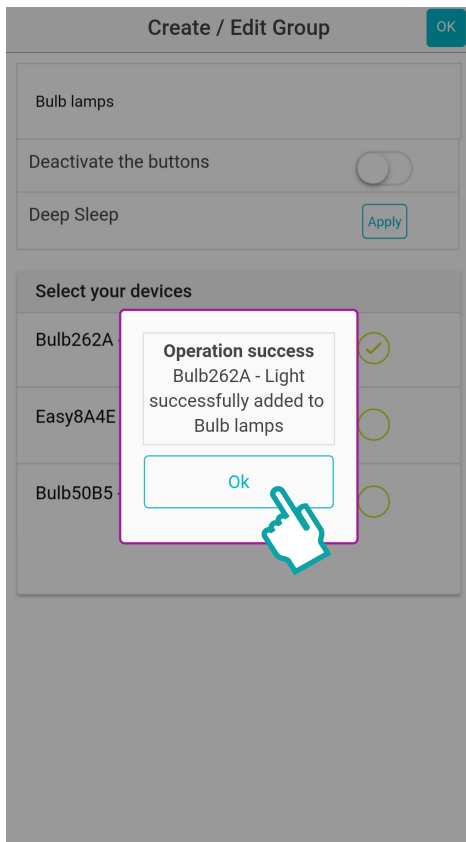
It is of course possible to create custom groups as required. For example, you can create groups corresponding to areas of the house, or even groups corresponding to certain types of products (such as the type of BULB or BULBLITE module, or the shape of diffuser BALL, CUBE etc.). Group management is limited only by your imagination.



BASIC FEATURES

To create a customized group, tap the "Create group" button and choose a name for the new group. Once the group has been created and named, just add your Smart and Green Bluetooth products to this group by tapping the button corresponding to the product in the module selection list.

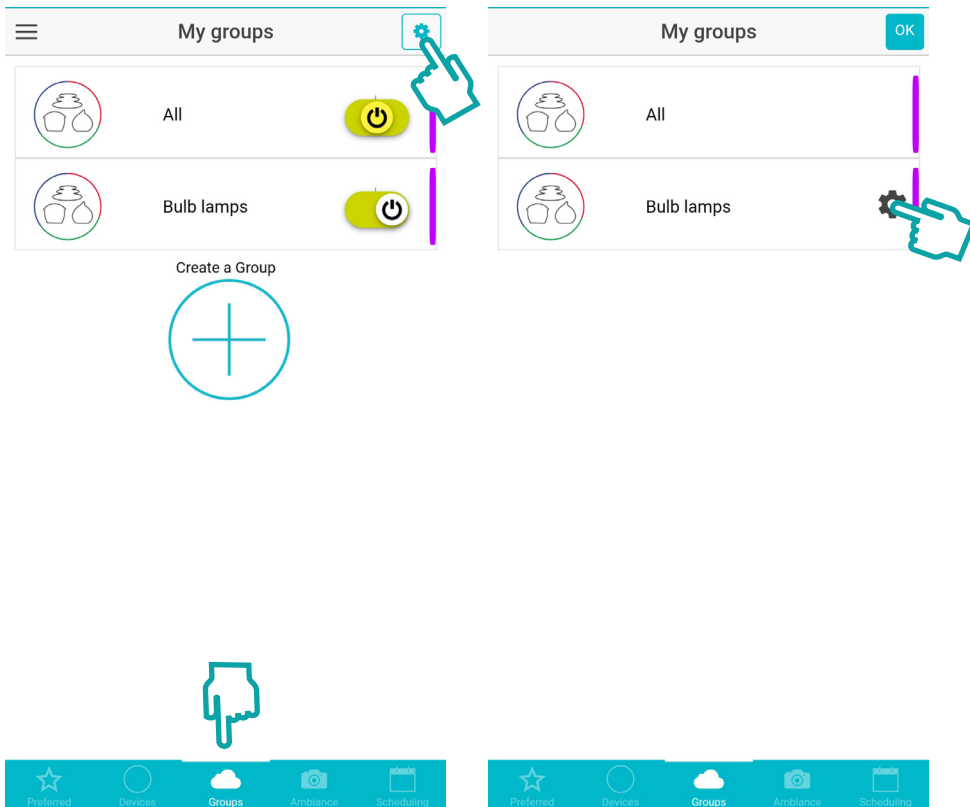
Note however that a module added to the group successfully would normally briefly flash green. In addition, the application should display a confirmation message. Once the customized group has been set up, it is possible to access the specific control of colors and moods using once again the tricolor circle icon.



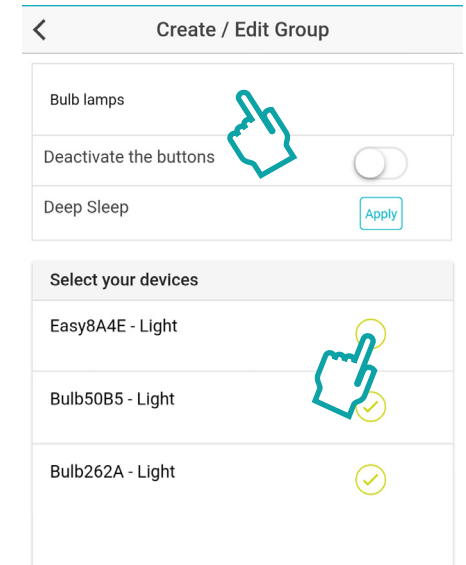
BASIC FEATURES

MANAGING A GROUP

When you are in the «Groups» menu, you can press the «Config» button and then the gear wheel symbol next to the group name.



Once in the group modification menu, it is possible to modify the group name or to modify its content simply by adding or removing modules in the corresponding list.



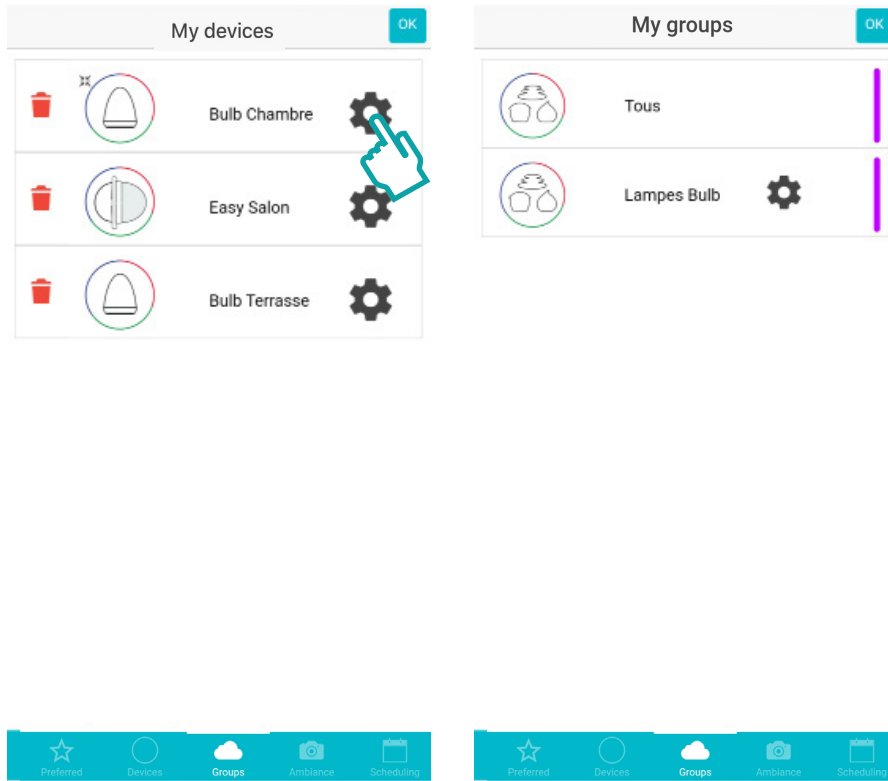
Once the modifications are complete, just press the «OK» button to validate the changes and return to the main screen of the group menu.

DELETING A GROUP

To delete a group, you must first access the management menu of the group to be deleted. To do this, simply go to the «Groups» tab and then press the «Config» button and then the gear wheel icon.

Once the management menu of a group is open, you just have to uncheck the activated modules inside the group.

BASIC FEATURES



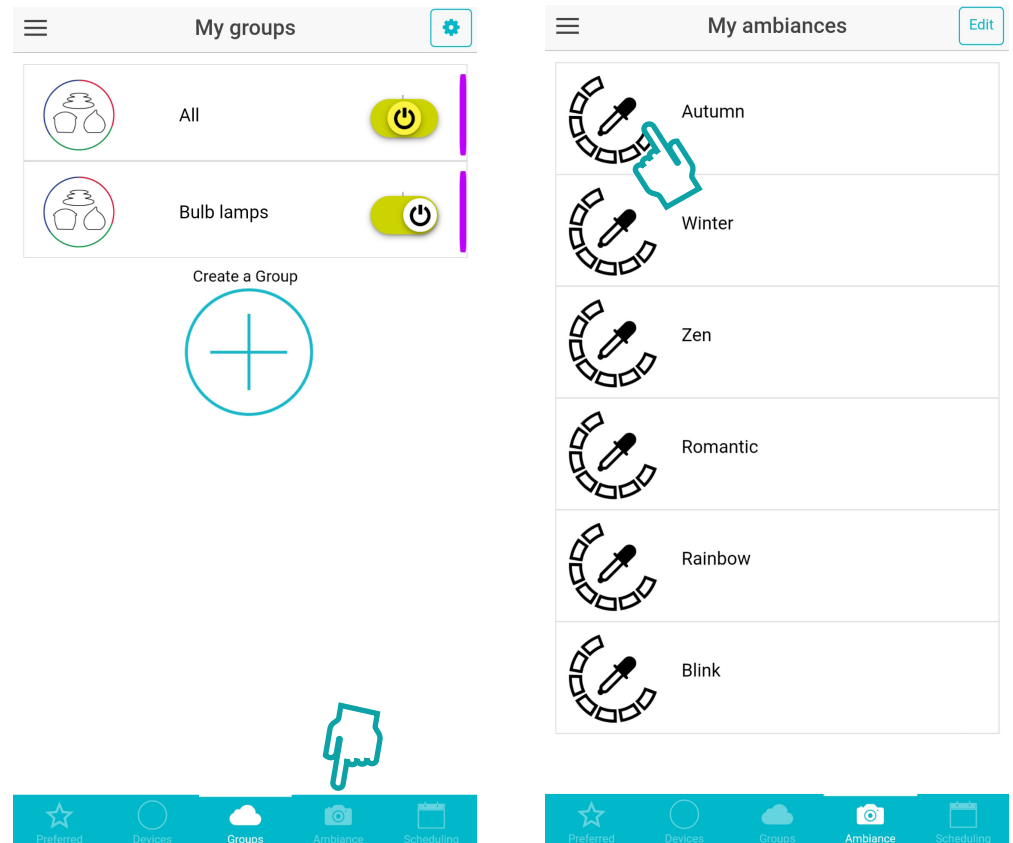
Once all the modules have been deactivated, press the «OK» button to validate the deletion of all the devices inside the group and consequently delete the group from the list.

MOODS MENU

It has previously been described that a single module or group containing several modules could receive commands according to colors or moods.

The moods are predefined color settings corresponding to the following names: Autumn, Winter, Zen, Romantic, Rainbow and Flashing.

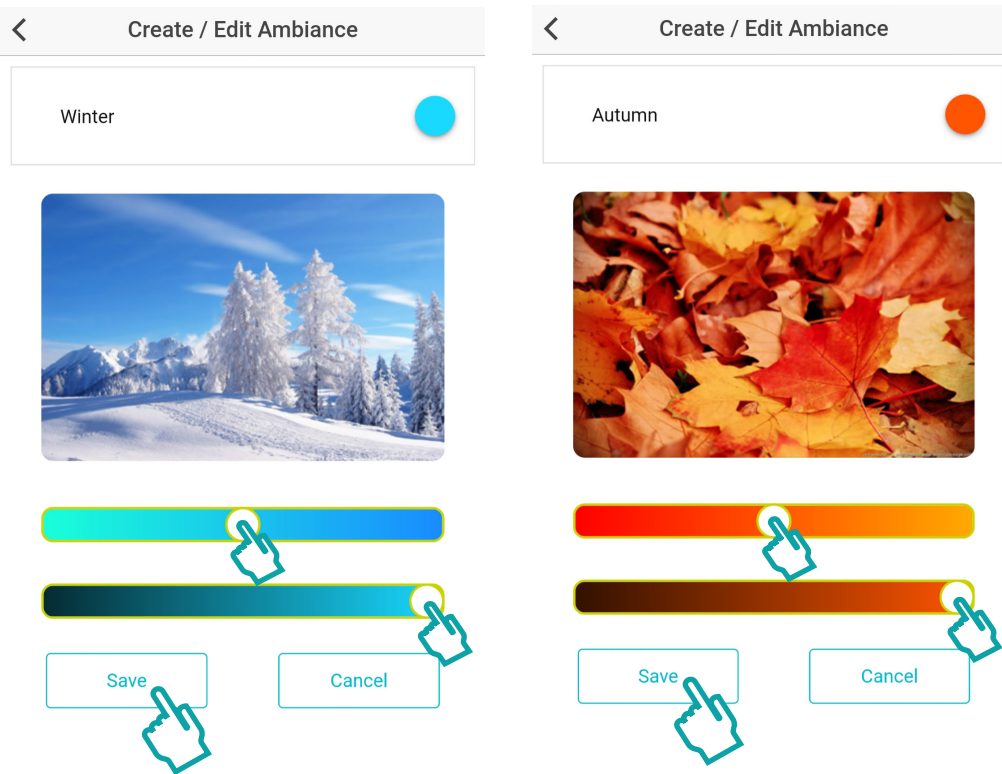
By accessing the Mood menu tab you can change these predefined color settings, in order to adjust them according to your own tastes.



BASIC FEATURES

Simply access the mood menu, for example press the color choice eyedropper icon for the autumn or winter mood.

You can now modify the shade via the horizontal settings bar, then press save to validate your new settings.



Note

When you change your mood settings like this, you have access to a preview of the new color at the top right of your screen.

Attention, this amendment is not applied automatically, you must return to your group or light to activate it.

You can select a theme via the "Atmosphere" tab. This theme is an arrangement of pre-defined colors.

For example, the "Rainbow" atmosphere displays a color sequence, while the "Romance" atmosphere gives a pure, pink color to the environment.

Atmospheres are a bit like favorites, letting you choose a color or color sequence for very common uses: reading, relaxing, waking, going to bed, etc.

BASIC FEATURES

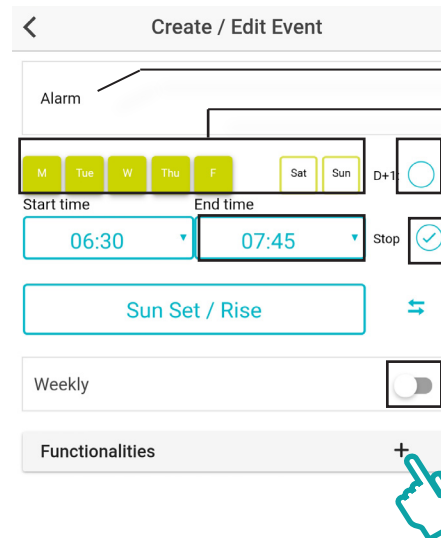
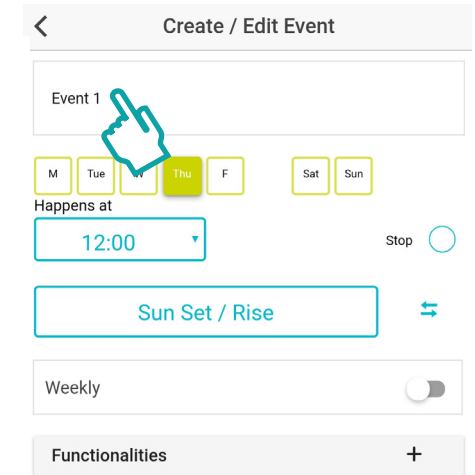
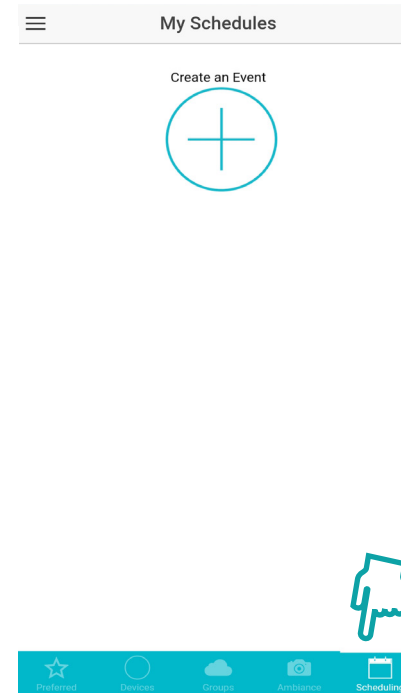
PROGRAMMING MENU

The configuration of an event is very comprehensive, since it defines the following criteria:

- Choice of a custom name for the event
- Choice of the day of the week concerned by this event
- Choice of a start time for the launch of the event
- Choice of an end time for stopping the event.
- Activation of the «repeat» mode to obtain repeatability of the event over time
- Choice of the Bluetooth devices affected by this event
- Choice of colors or moods for the devices concerned by the event

Create a waking event

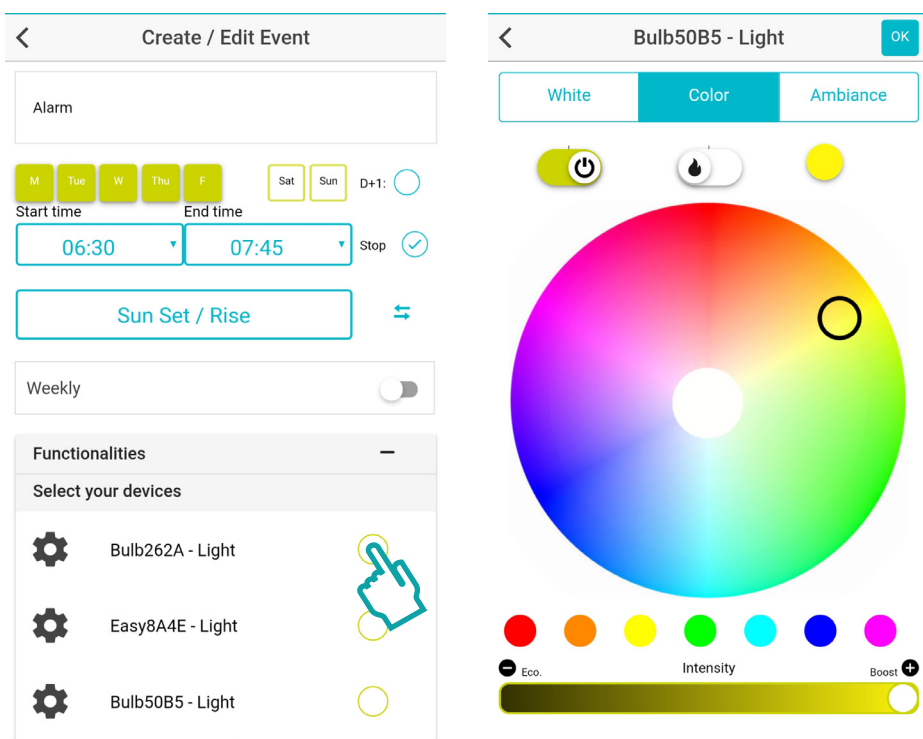
First go to the 'Programming' tab and press the «Create an event» button. You can then rename the event, and begin its configuration.



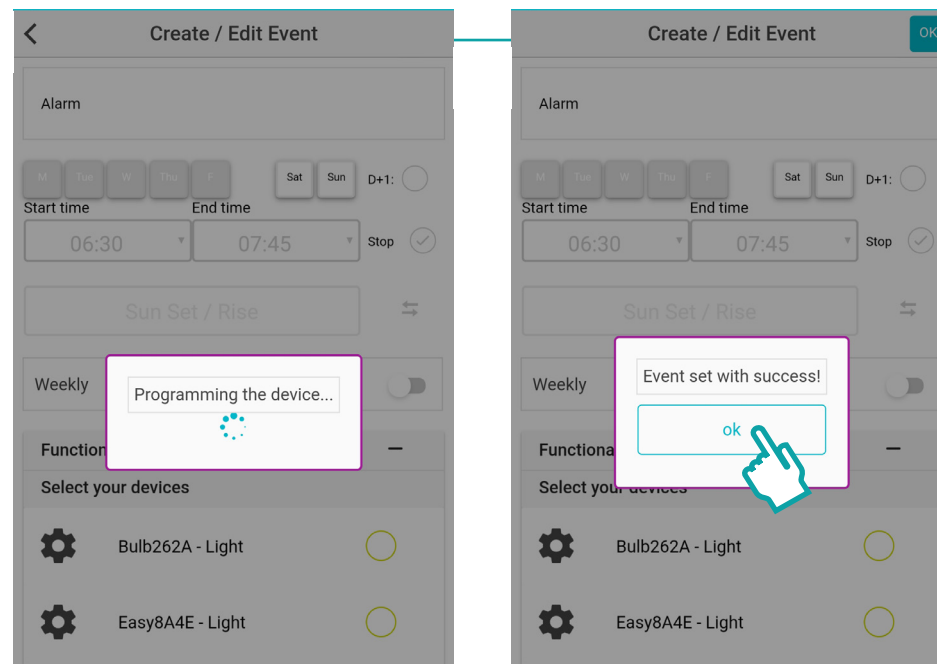
- Name
- Days of the week
- Set the time at which the event finishes
- Ending time of event the following day
- Activate event repetition

BASIC FEATURES

After having determined all options related to the days of the week, time slots, as well as potential repetitions it is now necessary to access the bottom of the settings page and press the menu button «Groups/devices». Once this button is pressed, you can select the devices that will be activated in the event.

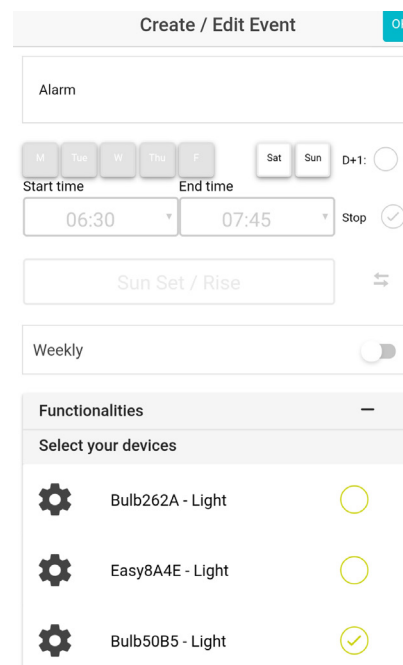


When activating a device, the application switches directly to the color and moods choice menu in order to define how the devices will light up during the programmed start of the event. Once the color setting has been carried out, simply press the apply «OK» button.



After pressing the «OK» button, the successful programmed message appears, you can then repeat the operation several times for all the modules you want to add to the event.

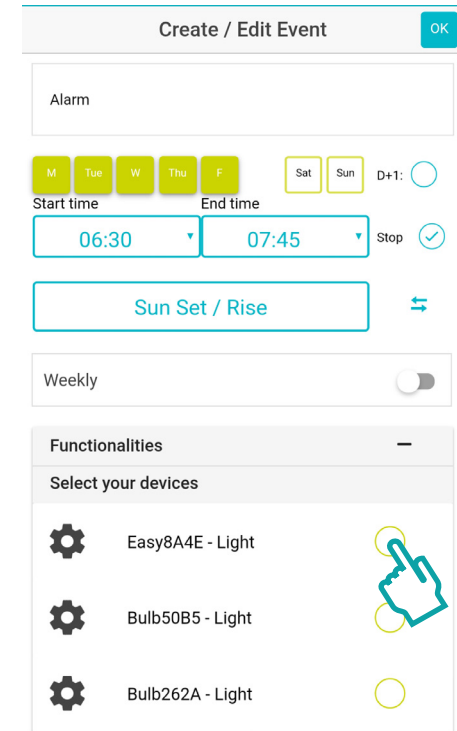
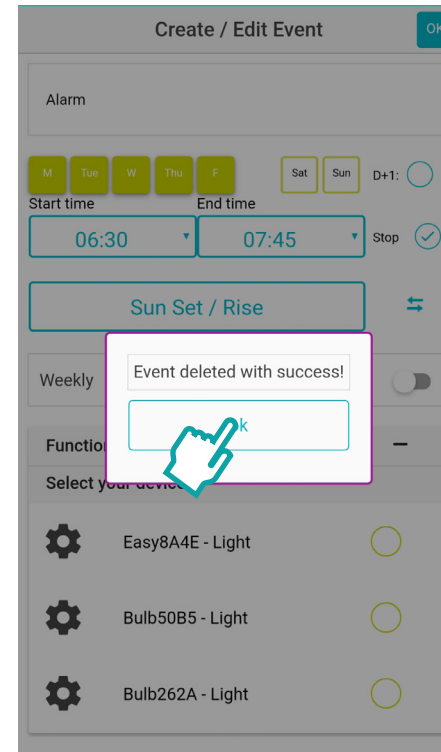
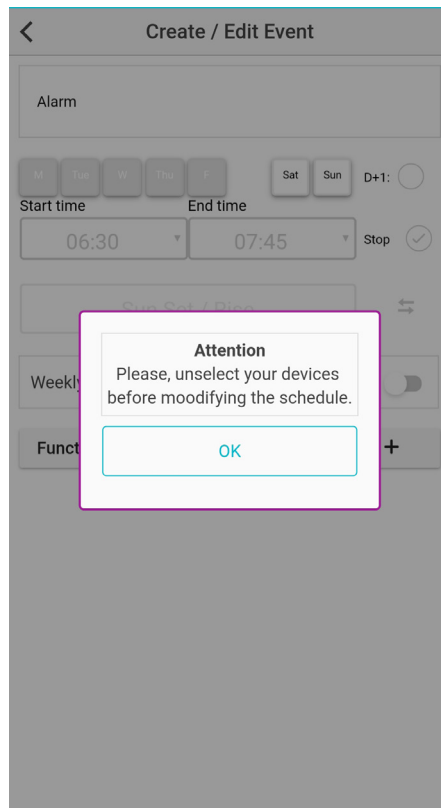
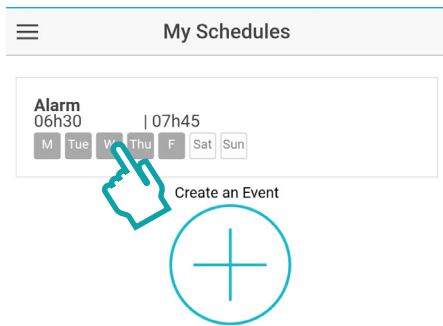
Once the addition of devices is complete, press the 'Create' button and note the appearance of the new event in the 'My programs' menu, meaning that it should take place according to the earlier defined settings.



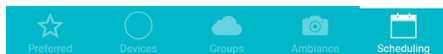
BASIC FEATURES

MANAGING AN EVENT

When you are in the «Programming» menu, you have the option of pressing the zone corresponding to the name of the event in order to access the event settings. By default the application tells you to first remove the devices from the list of modules affected by the event in order to make changes to the settings of days or hours.



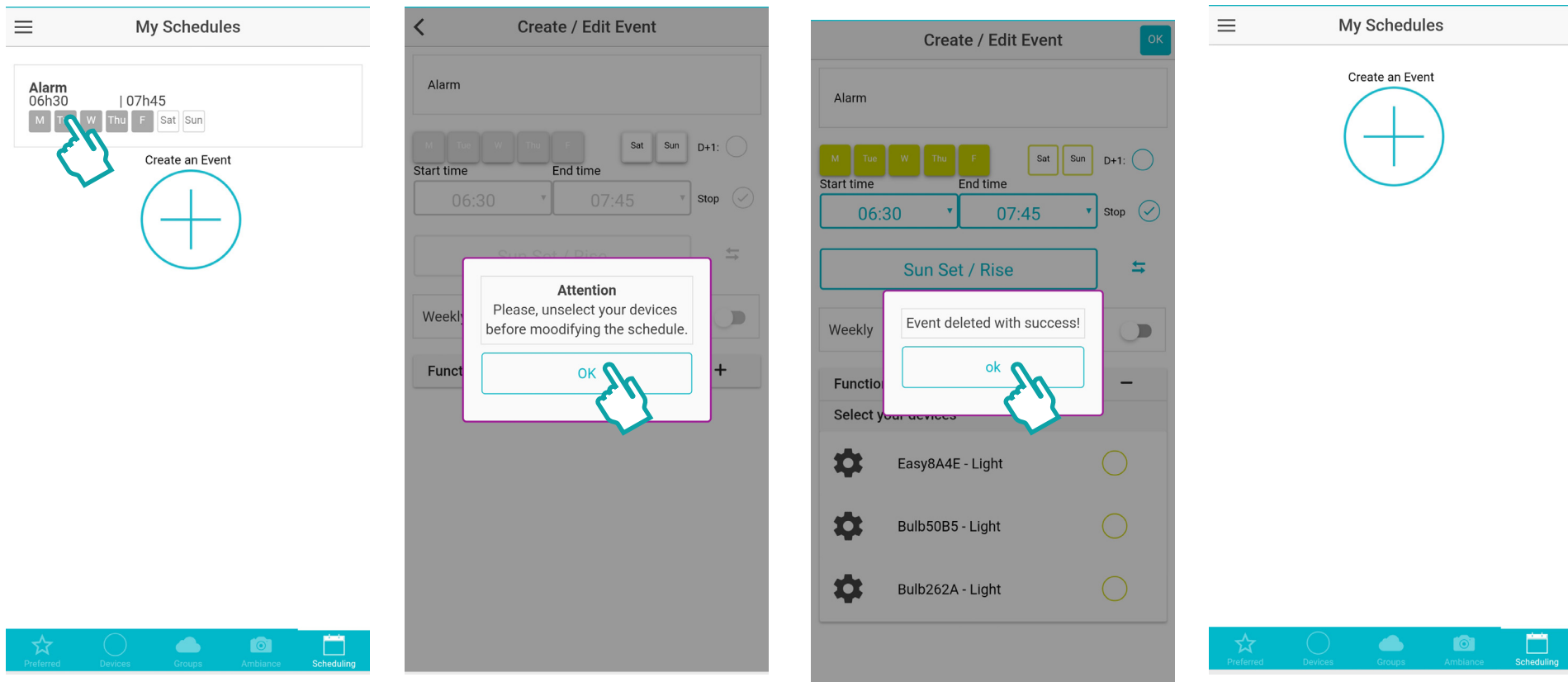
Once you have made the changes to the configuration of the event, you can add modules to the list of devices concerned, and define the color or mood they must comply with when they are switched on. After making all these changes simply press the «Save» button to validate the changes and return to the screen listing the events stored in your Smart and Green application.



BASIC FEATURES

DELETING AN EVENT

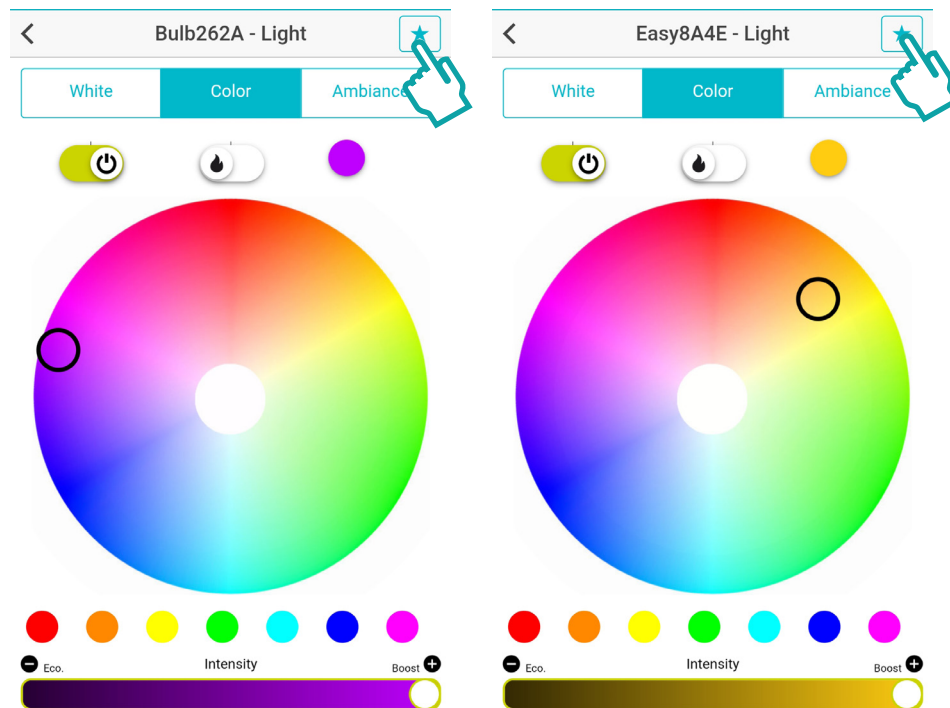
When you are in the «Programming» menu, you have the option of pressing the area corresponding to the name of the event in order to access the settings of the event. In the same way as for deleting a group, deleting an event simply requires disabling all the devices in the list of modules concerned by the event and then pressing the «Save» button, the application switches to the «Programming» menu and you will note that the event has been removed from the list.



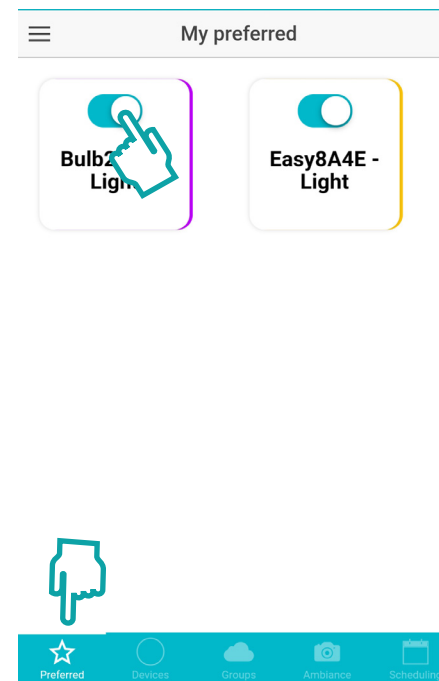
ADDITIONAL FEATURES

FAVORITES MENU

When you enter the color scheme menu corresponding to an individual module (from the «Devices» menu), or corresponding to a group (from the Groups menu), you can press the 'Star' button in order to select a single module or a group as Favorite.



Once the button is pressed, the «Star» symbol normally switches to a green colored background (by default the symbol has no color fill).



Note

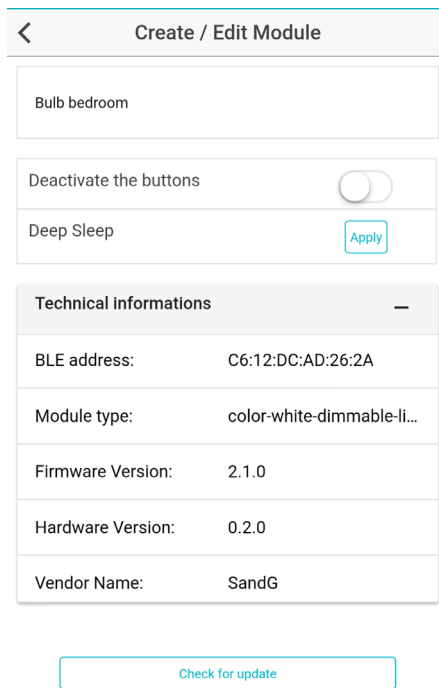
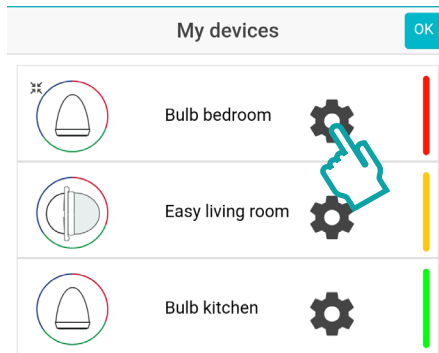
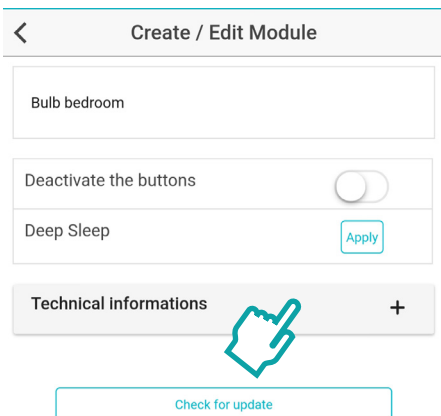
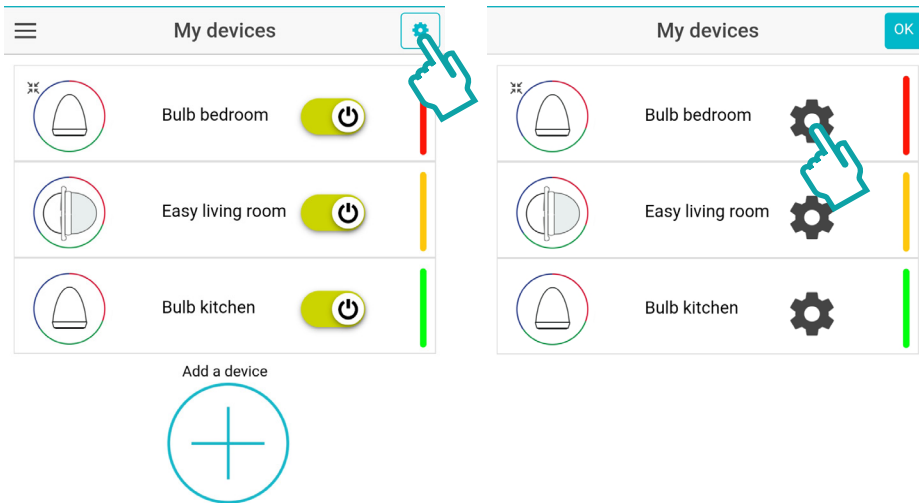
The Favorites menu cannot currently be used to modify modules and group colors, simply their switching on or off.

Once your favorite modules or groups have been added to your «Favorites» menu, you can quickly access their ON/OFF switch.

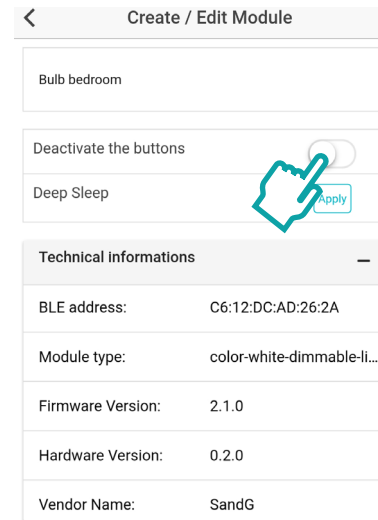
DEVICE MANAGEMENT

When you are in the «Devices» menu, you can press the «Config» button, the gear wheel symbol then appears next to the device name. You will then have the possibility to change the name of the device, check that there is no necessary update for your product, and finally access various technical information such as the software version or even the Bluetooth device address. Certainly, in addition to updates of your SMART AND GREEN application available directly on the download portal corresponding to your smartphone (Google Playstore or Apple Appstore), an internal software update of your devices may also be available.

ADDITIONAL FEATURES



DEACTIVATE THE DEVICE



You can also choose to disable the buttons on your device. If selected, your device will no longer react to the pressure of the physical buttons but only to the SmartMesh® application. A user could no longer change the lighting scenario selected in the application by pressing the buttons on your device. If you have guests who are a little too curious, for example, this option is for you.

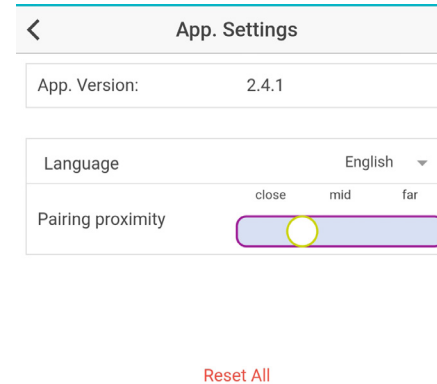
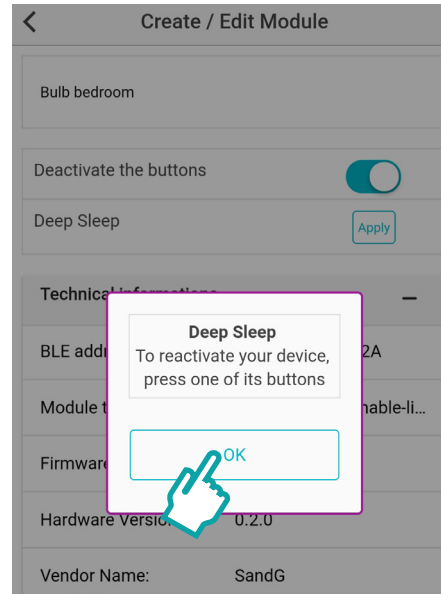
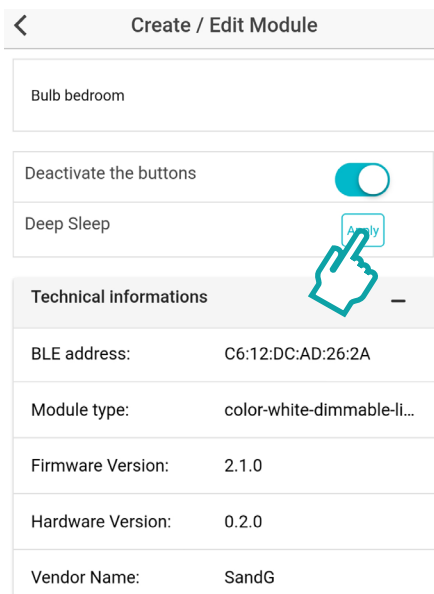
However, you should be aware that it is possible to turn off and reset a device with its buttons by following the procedure detailed in «Restart a product».

DEEP SLEEP MODE

If you do not want to use a device for a long time you can also decide to put it in standby mode to save its battery. Even when they are not on, the products consume battery power. By putting them on standby, your devices will no longer consume energy until you wake them up. To do this, simply press one of the buttons on the device.

You can then use your device directly from the mobile application.

ADDITIONAL FEATURES



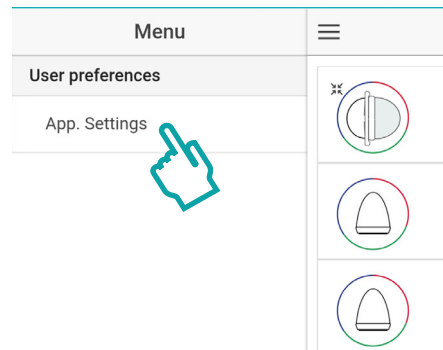
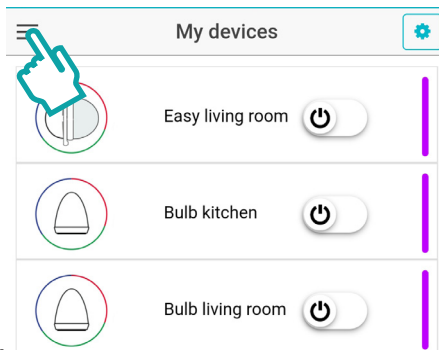
Thanks to the App settings menu you can access the version number of your Smart and Green application or change the language of the interface (French or English only in the current version).

The pairing distance allows you to define the distance at which the app can detect new devices during the pairing process. The default setting is an average value, allowing pairing up to 2m from your smartphone depending on the specifications of the latter and the external conditions (disturbance, thick reinforced concrete walls, etc.).

OPTIONS MENU

You can press the «Settings» button located at the top left and symbolized by three black horizontal bars to access the «User Preferences» menu and then press the «Settings App» button.

Finally, the «Reset» button returns to the default settings of the application for the above parameters, but it also removes all modules, groups, events and favorites.



Warning

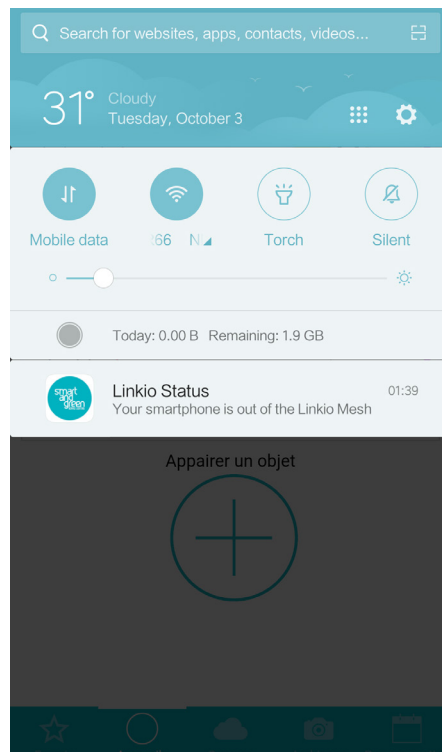
If you delete your modules via the «Reset» button, be aware that in the same way as for a «Local» deletion of your module, it will be necessary to follow the restart procedure before any other pairing.



ADDITIONAL FEATURES

ANDROID/IOS APP NOTIFICATIONS

During your use of the Smart and Green application, you will notice more or less frequent notifications. These Android or iOS notifications are present to inform you of the status of your smartphone in the Mesh® network that you have set up at home or in your business through the addition of devices in the application.



These notifications indicate in real time whether or not your smartphone has successfully connected to your device network. When you add your Bluetooth products to your application you are creating your Mesh® network. Subsequently if you leave the zone, your products remain linked together regardless.

In short, when you move too far away from your Mesh® network, your smartphone via the application Smart and Green, will not be able to connect, and you will receive a notification to say you are no longer in the network.

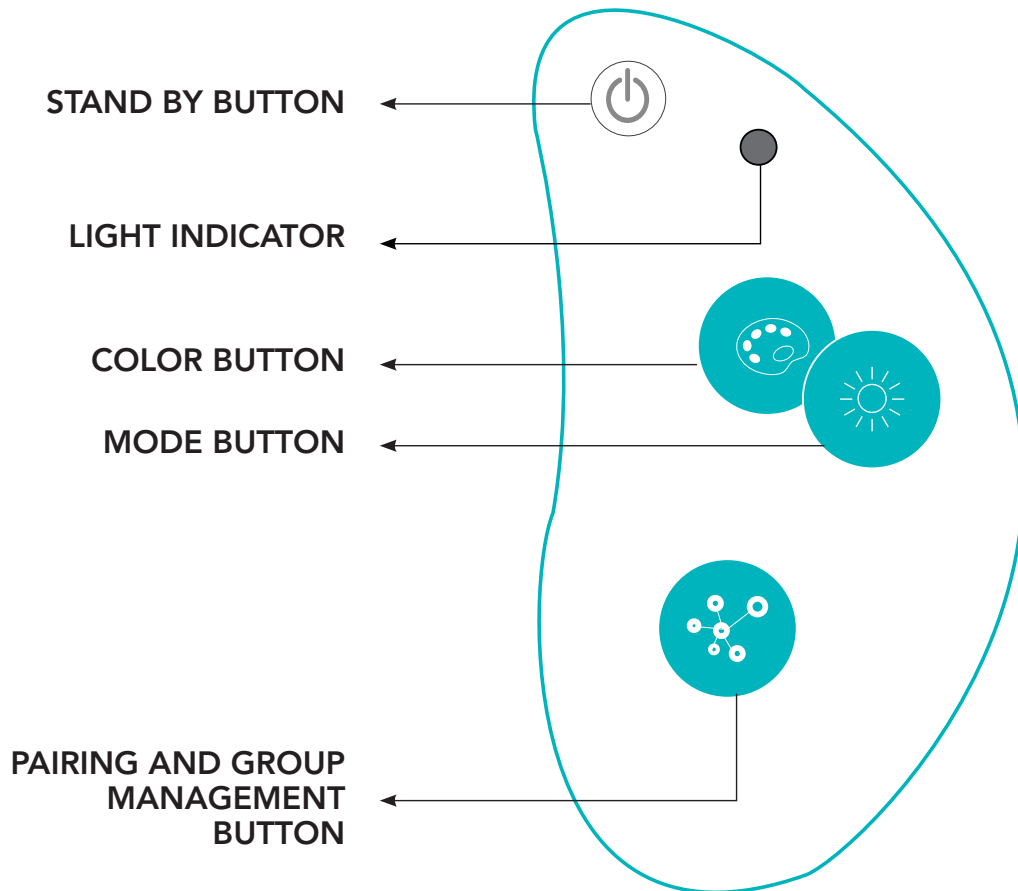
If you return close to your Mesh® network, making sure your Smart and Green application is up and running, that your Bluetooth is activated, it will only take a few seconds for your smartphone to be able to connect to the nearest module in order to join the others on the network. In this case the application should normally notify you that you are back in the Mesh® network.

It is not necessary to be at the center of your products in order to control the entire network. Each module acts as a repeater which means that if the distances are respected between all modules, you just need to be close to at least one device so that your smartphone can connect to it and then you have access to control over your entire device network.

USING ACCESSORIES

KEY MESH

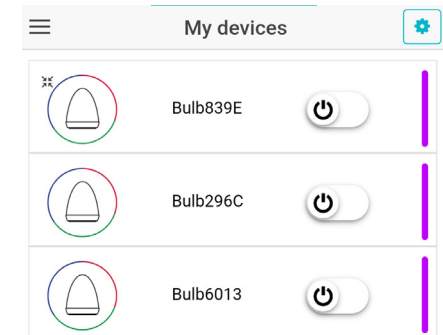
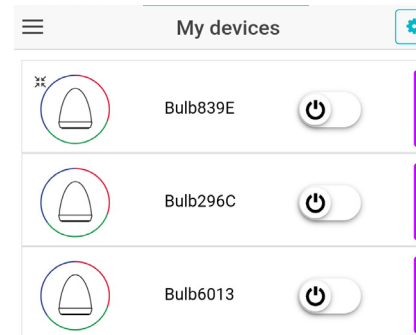
The KEY is a remote control that allows you to control all your Bluetooth equipment in a single click. You no longer need to use your telephone, you can control the color and brightness of an entire device group using the 4 buttons on the remote control.



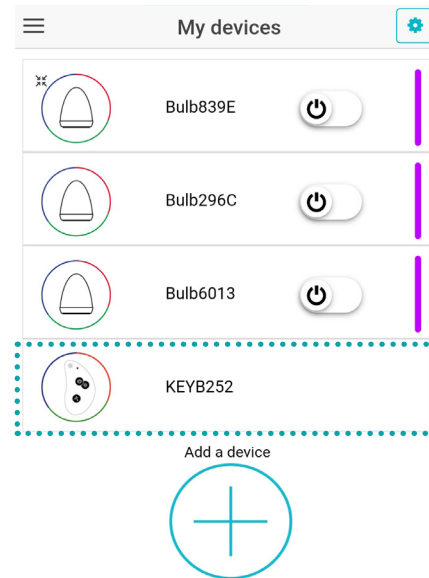
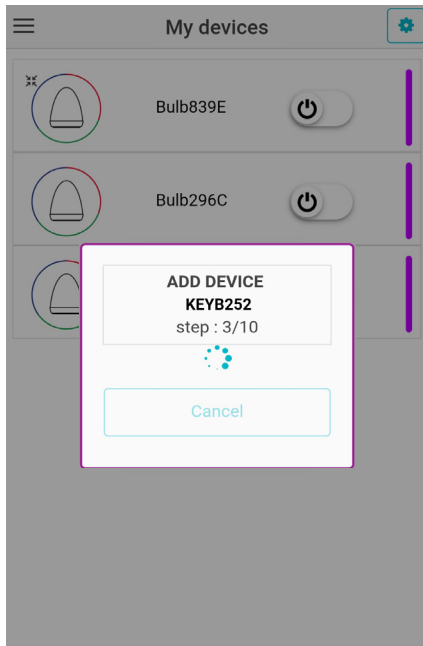
Tap and hold the "Pairing" button for 10 seconds to perform a factory reset. The remote control unpairs from all products, ready to be re-paired.

FIRST CONNECTION

To begin using your KEY product, first connect it to the MESH network. Tap the "Add device" button and wait for pairing to proceed. To do this, tap the "Pairing" button on the remote control to make it visible via the Smart and Green mobile app. Once complete, your KEY remote control should appear in your list of connected devices.



USING ACCESSORIES





Congratulations!


You can begin using the product to control your Bluetooth devices already connected.

BASIC FEATURES

The buttons on your remote control allow you to control all your products without having to use your telephone. To do this, you have three buttons:

 **ON/OFF:** allows you to switch all your products on and off at the same time (or your defined group).

 **Color :** allows you to change the color of your devices on a defined cycle.

 **Level:** allows you to adjust the brightness of the chosen color. Hold the button to monitor the change of brightness and choose the one that suits you best.

Please note that you can control your devices normally from the SmartMesh app at any time.
> Refer to the section starting on page 12 of the user guide.

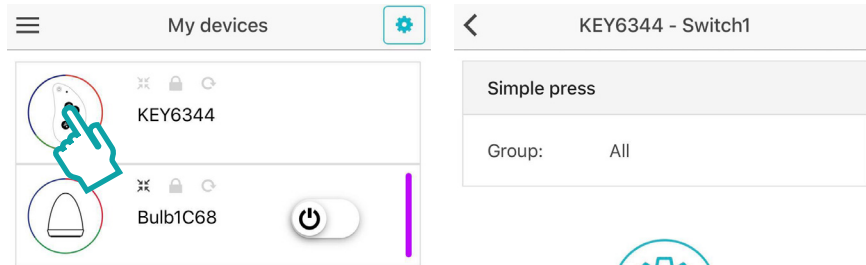
USING ACCESSORIES

MANAGING GROUPS

Your KEY remote control allows you to manage an entire device group at the same time. The default setting for this group is "all", i.e. you control all the devices in the "My devices" section. This group can be amended based on your preferences.

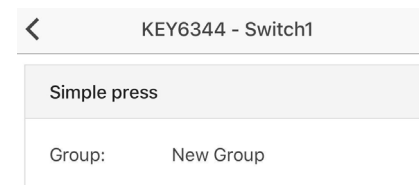
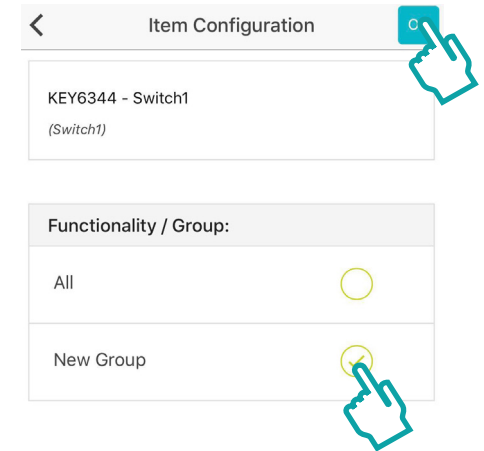
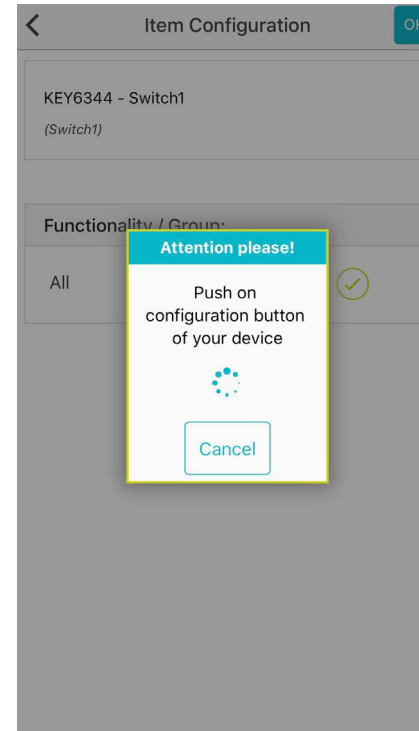
To do this:

- Create a device group in the "Group" section of the app. Please refer to the section "Groups menu" on page 26.
- Tap the KEY icon in your device list. You can see the group currently selected: All.
- Tap the setting button (cog).



- On your KEY remote control, press the "Pairing" button as requested by the app.

- You can then select the new group that you want to control. Confirm with "OK".



Return to the home screen.

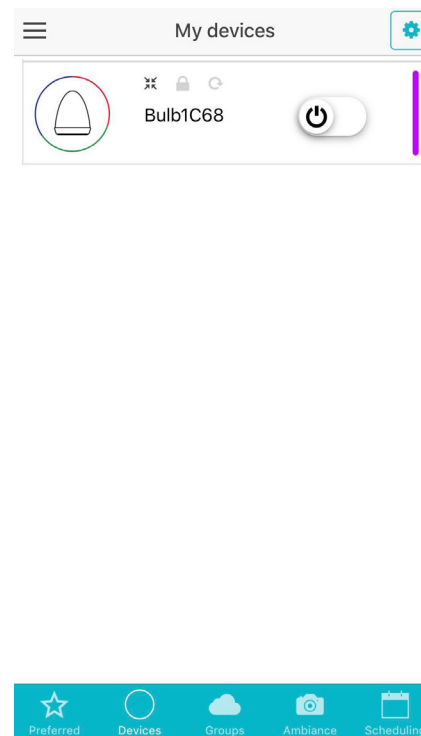
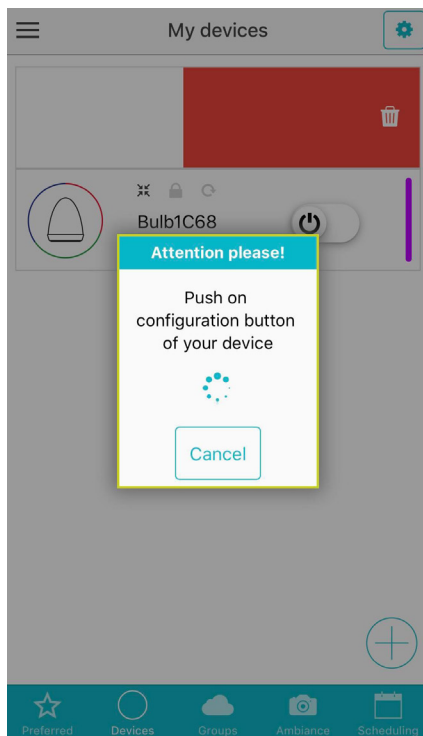
Your KEY remote control is now ready to control your new group!

USING ACCESSORIES

REMOVING THE REMOTE CONTROL

If you no longer want to use the KEY remote control, you can simply remove it from your device list by following the usual procedure on page 14 of the user guide.

Then, press the "Pairing" button on the remote control once to confirm the request and remove the remote control from the network.



Attention

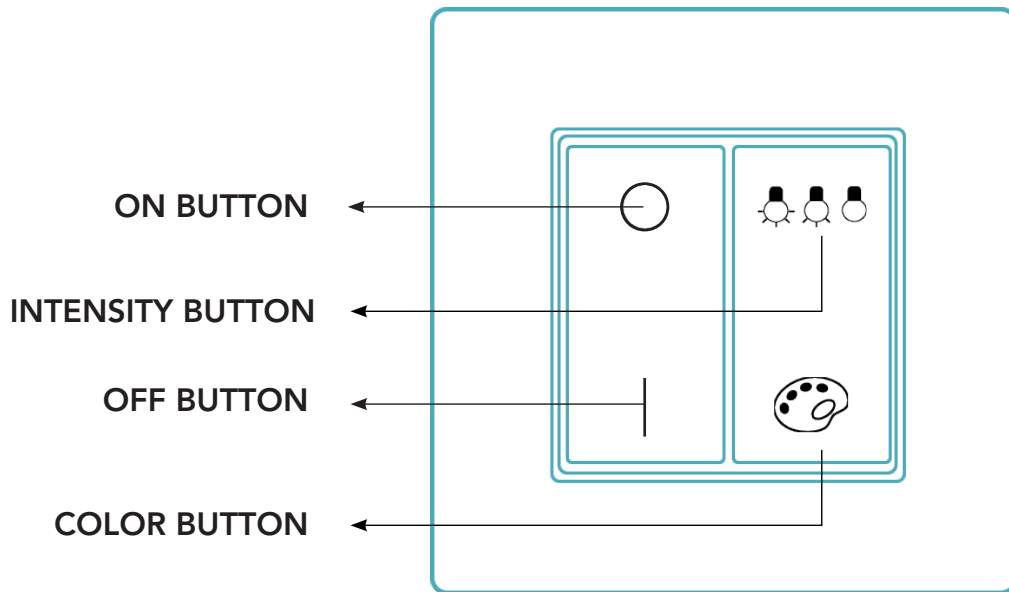
The remote control factory reset does not remove the remote control properly as the signal is lost. This is therefore the preferred method for removing your remote control from the network.



USING ACCESSORIES

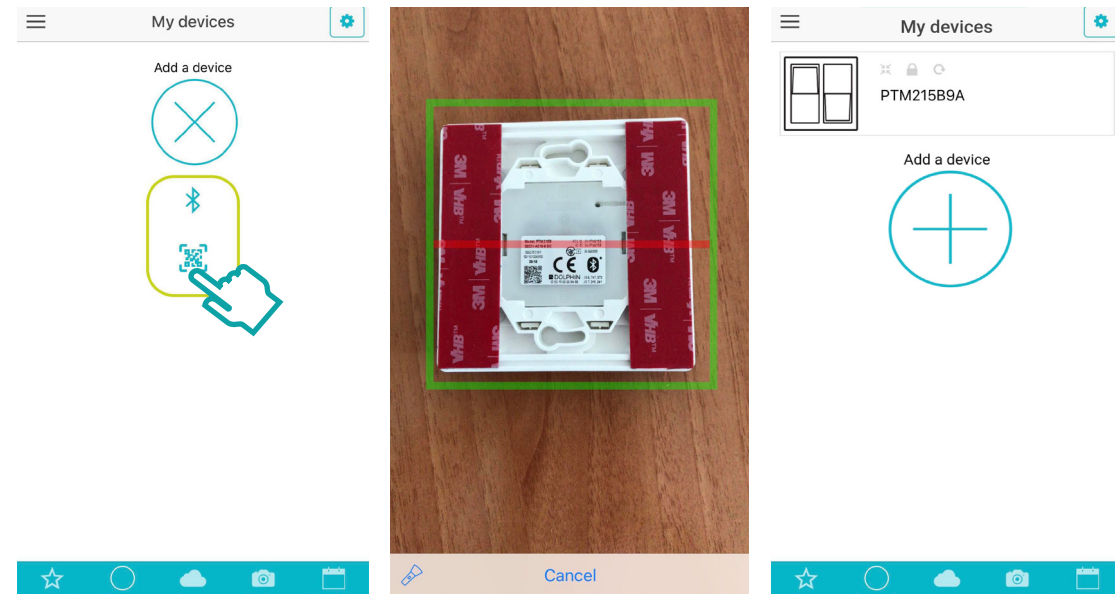
SWITCH MESH

The wireless, batteryless MESH switch can be positioned anywhere thanks to its double-sided adhesive strip. This gives you the benefit of simple access to all your lighting.



FIRST CONNECTION

To use the MESH SWITCH, pair it with your smartphone or tablet. To do this, tap the "Pair device" button, then select the second "QR Code" button. Using your smartphone or tablet, scan the QR code on the back of your Mesh Switch.



Note

Remember that you can control your devices normally from the SmartMesh application at any time. Refer to the user guide starting on page 12.



USING ACCESSORIES

MANAGING GROUPS

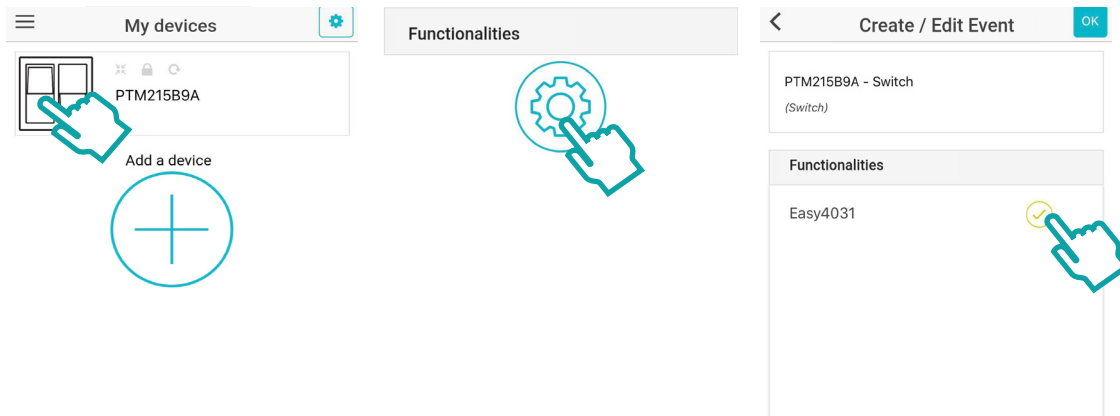
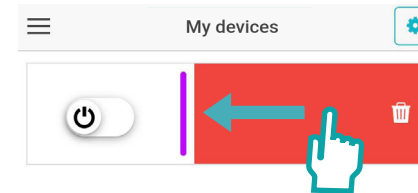
Unlike the KEY, you cannot control an entire group with the SWITCH. To do this, connect each light to your switch, following the procedure below:

- Tap the SWITCH logo.
- The full list of lights paired with your telephone should appear.
- One by one, select the lights you want to control.

Your Mesh Switch is now ready to control your group!

REMOVING THE SWITCH FROM THE MESH NETWORK

If you no longer want to use the SWITCH, simply remove it from your device list. To do this, drag the product that you want to unpair to the left.



Congratulations, the SWITCH is removed from the MESH network!



